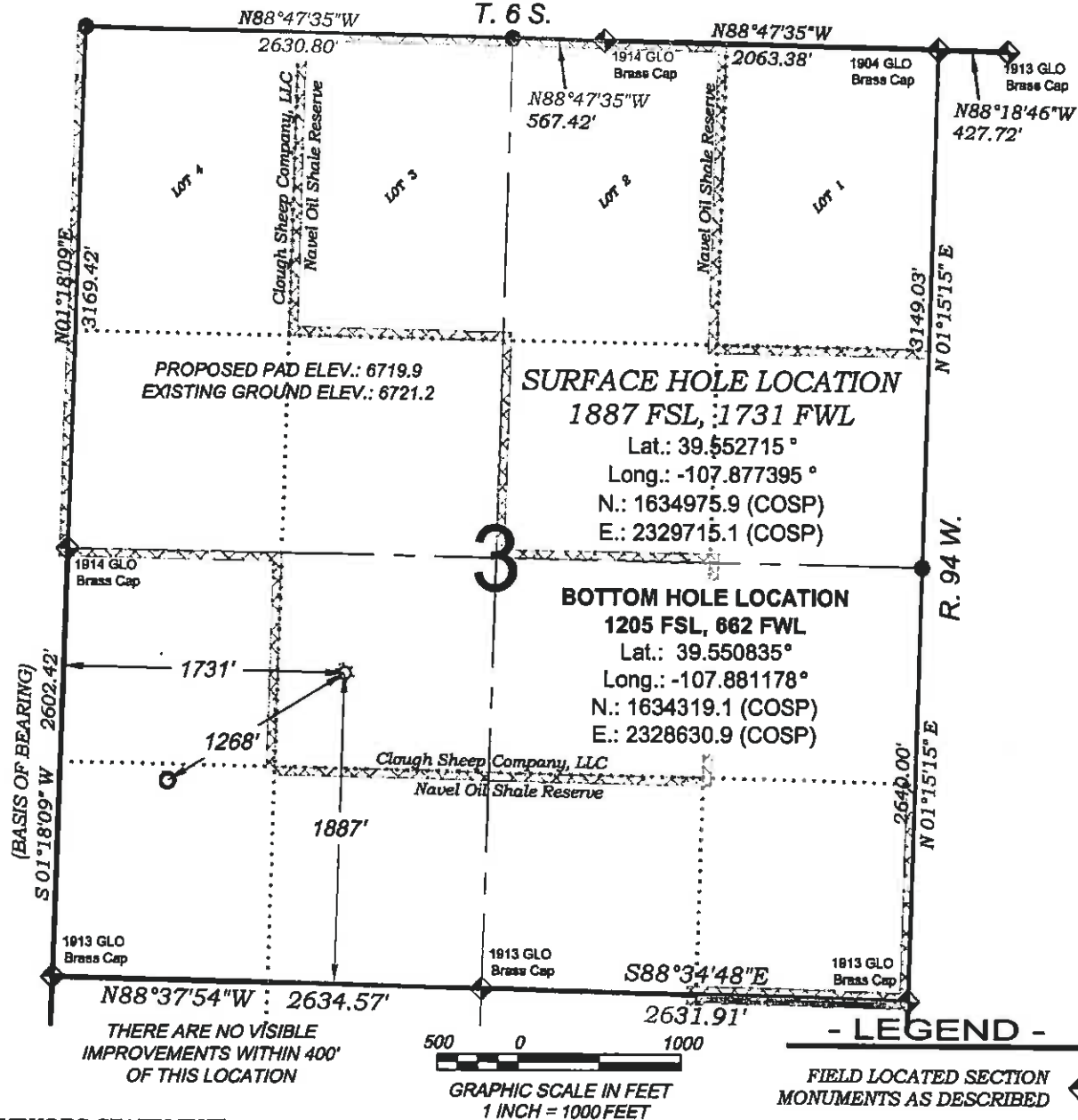


NR 514-3

T. 6 S.

**SURVEYORS STATEMENT**

I, MICHAEL J. LANGHORNE, A REGISTERED LAND SURVEYOR IN THE STATE OF COLORADO, DO HEREBY CERTIFY THAT THE SURVEY SHOWN HEREON WAS PREPARED UNDER MY DIRECT SUPERVISION AND HAS BEEN STAKED ON THE GROUND AS SHOWN ON THE PLAT AND CHECKING THAT THIS MAP IS A TRUE REPRESENTATION THEREOF.

MICHAEL J. LANGHORNE, COLORADO REGISTRATION NO. 36572  
FOR AND ON BEHALF OF

BOOKCLIFF SURVEY SERVICES, INC.

**REFERENCES**

- 1) STATUS OF PUBLIC DOMAIN LAND AND MINERAL TITLES, PARTIALLY SURVEYED T. 6 S., R. 94 W., 6<sup>th</sup> P.M.
- 2) U.S.G.S. QUAD: RIFLE, CO

**NOTES**

- 1) ELEVATIONS BASED ON N.A.V.D. 1988 PUBLISHED COORDINATES.
- 2) LATITUDES AND LONGITUDES ARE BASED ON NAD 83, PUBLISHED COORDINATES
- 3) STATE PLANE COORDINATES ARE BASED ON COLORADO CENTRAL ZONE, U.S. SURVEY FEET.
- 4) ELEVATION MASK SET TO 15'
- 5) GPS OPERATOR TANNER VIBERS, OBSERVED A PDOP 2.0 ON SURVEY POINT NUMBER 61306.
- 6) SURFACE AND BOTTOM HOLE LOCATIONS ARE MEASURED 90° FROM SECTION LINES.

WELL LOCATION PLAT Prepared for:  
**Williams** Williams Production, RMT

NE1/4SW1/4, SECTION 3  
T. 6 S., R. 94 W. of the 6<sup>th</sup> P.M.  
GARFIELD COUNTY, COLORADO

SURVEY DATE: 9/17/10  
MAP DATE: 9/23/10  
SCALE: 1" = 1000'  
PLAT: 1 of 1  
PROJECT: Williams

**BOOKCLIFF**  
Survey Services, Inc.