

---

# **OXY GRAND JUNCTION EBUSINESS**

---

**CC 697-10-42B  
GRAND VALLEY  
Garfield County , Colorado**

**Cement Surface Casing  
30-Dec-2010**

**Post Job Summary**

## The Road to Excellence Starts with Safety

Sold To #: 344034	Ship To #: 344034	Quote #:	Sales Order #: 7841746
Customer: OXY GRAND JUNCTION EBUSINESS	Customer Rep: COOMBS, HENRY		
Well Name: CC	Well #: 697-10-42B	API/UWI #: 05-045-19502	
Field: GRAND VALLEY	City (SAP): DEBEQUE	County/Parish: Garfield	State: Colorado
Lat: N 39.53 deg. OR N 39 deg. 31 min. 46.438 secs.	Long: W 108.213 deg. OR W -109 deg. 47 min. 12.898 secs.		
Contractor: H&P 353	Rig/Platform Name/Num: H&P 353		
Job Purpose: Cement Surface Casing			
Well Type: Development Well	Job Type: Cement Surface Casing		
Sales Person: DUNNING, DUSTIN	Srvc Supervisor: TRIPLETT, MICHEAL	MBU ID Emp #: 447908	

## Job Personnel

HES Emp Name	Exp Hrs	Emp #	HES Emp Name	Exp Hrs	Emp #	HES Emp Name	Exp Hrs	Emp #
ANDREWS, ANTHONY Michael	11	321604	BORSZICH, STEPHEN A	11	412388	HAYES, JESSE Doug	11	403601
JAMISON, PRICE W	11	229155	SINGLETON, AUSTIN W	11	487406	TRIPLETT, MICHEAL Anthony	11	447908

## Equipment

HES Unit #	Distance-1 way	HES Unit #	Distance-1 way	HES Unit #	Distance-1 way	HES Unit #	Distance-1 way
10297346	120 mile	10551730C	120 mile	10867423	120 mile	10897887	120 mile
10938677	120 mile	10973565	120 mile	10973571	120 mile	11071559	120 mile
11259881	120 mile						

## Job Hours

Date	On Location Hours	Operating Hours	Date	On Location Hours	Operating Hours	Date	On Location Hours	Operating Hours
12/29/2010	4	0	12/30/2010	7	3			

**TOTAL** Total is the sum of each column separately

## Job

Formation Name	Top	Bottom	Called Out	Date	Time	Time Zone
Formation Depth (MD)			On Location	29 - Dec - 2010	07:00	MST
Form Type		BHST	Job Started	29 - Dec - 2010	20:00	MST
Job depth MD	2720. ft	Job Depth TVD	Job Completed	29 - Dec - 2010	21:30	MST
Water Depth		Wk Ht Above Floor	Departed Loc	30 - Dec - 2010	05:00	MST
Perforation Depth (MD)	From	To		30 - Dec - 2010	07:00	MST

## Well Data

Description	New / Used	Max pressure psig	Size in	ID in	Weight lbm/ft	Thread	Grade	Top MD ft	Bottom MD ft	Top TVD ft	Bottom TVD ft
-------------	------------	-------------------	---------	-------	---------------	--------	-------	-----------	--------------	------------	---------------

Sales/Rental/3<sup>rd</sup> Party (HES)

Description	Qty	Qty uom	Depth	Supplier
PLUG,CMTG,TOP,9 5/8,HWE,8.16 MIN/9.06 MA	1	EA		

## Tools and Accessories

Type	Size	Qty	Make	Depth	Type	Size	Qty	Make	Depth	Type	Size	Qty	Make
Guide Shoe					Packer					Top Plug			
Float Shoe					Bridge Plug					Bottom Plug			
Float Collar					Retainer					SSR plug set			
Insert Float										Plug Container			
Stage Tool										Centralizers			

## Miscellaneous Materials

Gelling Agt	Conc	Surfactant	Conc	Acid Type	Qty	Conc	%
Treatment Fld	Conc	Inhibitor	Conc	Sand Type	Size	Qty	

## Fluid Data

Stage/Plug #: 1	Fluid Name	Qty	Qty uom	Mixing Density lbm/gal	Yield ft <sup>3</sup> /sk	Mix Fluid Gal/sk	Rate bbl/min	Total Mix Fluid Gal/sk
Fluid #	Stage Type							

1	Water Spacer		20.00	bbl	8.33	.0	.0	.0	
2	Gel Water Spacer		20.00	bbl	.	.0	.0	.0	
3	Water Spacer		20.00	bbl	.	.0	.0	.0	
4	Lead Cement	VERSACEM (TM) SYSTEM (452010)	808.0	sacks	12.3	2.33	12.62		12.62
	12.62 Gal	FRESH WATER							
5	Tail Cement	VERSACEM (TM) SYSTEM (452010)	125.0	sacks	12.8	2.07	10.67		10.67
	10.67 Gal	FRESH WATER							
6	Displacement		204.00	bbl	.	.0	.0	.0	
<b>Calculated Values</b>		<b>Pressures</b>		<b>Volumes</b>					
Displacement	204	Shut In: Instant		Lost Returns	40	Cement Slurry	381	Pad	
Top Of Cement	SURFACE	5 Min		Cement Returns	55	Actual Displacement	203.99	Treatment	
Frac Gradient		15 Min		Spacers	60	Load and Breakdown		Total Job	645
<b>Rates</b>									
Circulating	6	Mixing		7	Displacement	6	Avg. Job		6.5
Cement Left In Pipe	Amount	53 ft	Reason	Shoe Joint					
Frac Ring # 1 @	ID		Frac ring # 2 @	ID		Frac Ring # 3 @	ID		Frac Ring # 4 @
The Information Stated Herein Is Correct				Customer Representative Signature					

*The Road to Excellence Starts with Safety*

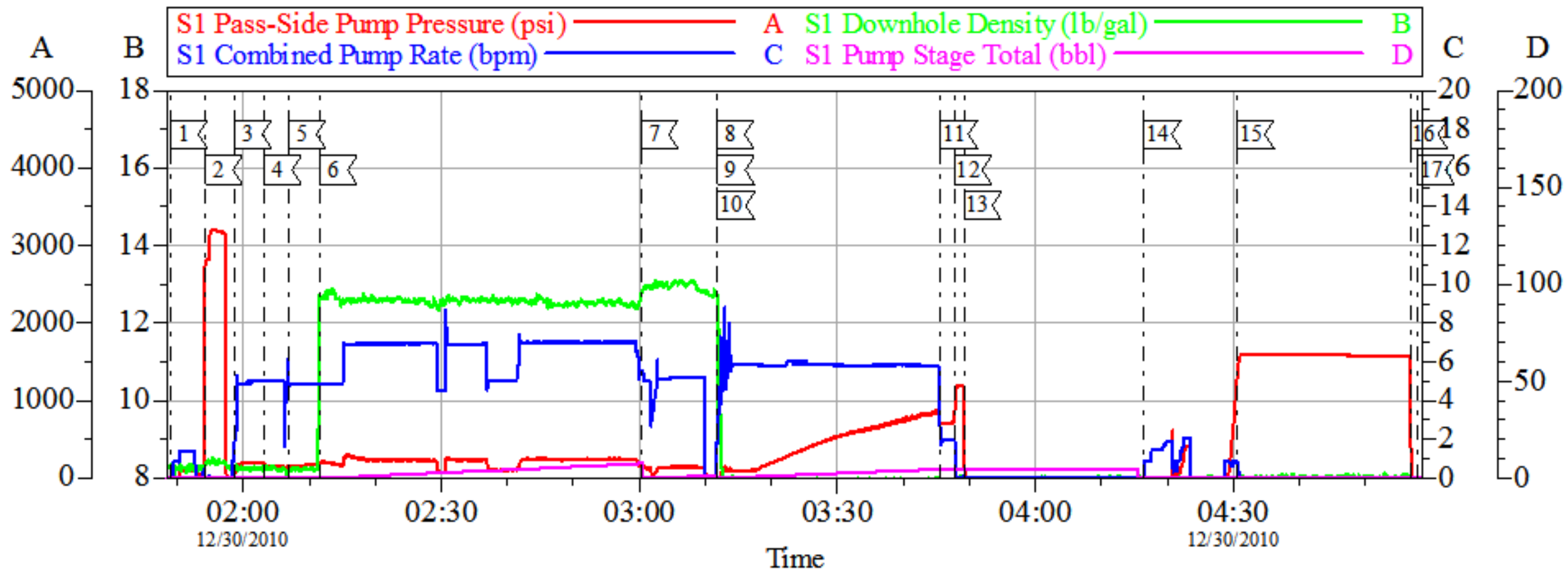
<b>Sold To #:</b> 344034		<b>Ship To #:</b> 344034		<b>Quote #:</b>		<b>Sales Order #:</b> 7841746	
<b>Customer:</b> OXY GRAND JUNCTION EBUSINESS				<b>Customer Rep:</b> COOMBS, HENRY			
<b>Well Name:</b> CC			<b>Well #:</b> 697-10-42B			<b>API/UWI #:</b> 05-045-19502	
<b>Field:</b> GRAND VALLEY		<b>City (SAP):</b> DEBEQUE		<b>County/Parish:</b> Garfield		<b>State:</b> Colorado	
<b>Legal Description:</b>							
<b>Lat:</b> N 39.53 deg. OR N 39 deg. 31 min. 46.438 secs.				<b>Long:</b> W 108.213 deg. OR W -109 deg. 47 min. 12.898 secs.			
<b>Contractor:</b> H&P 353			<b>Rig/Platform Name/Num:</b> H&P 353				
<b>Job Purpose:</b> Cement Surface Casing						<b>Ticket Amount:</b>	
<b>Well Type:</b> Development Well			<b>Job Type:</b> Cement Surface Casing				
<b>Sales Person:</b> DUNNING, DUSTIN			<b>Srv Supervisor:</b> TRIPLETT, MICHEAL			<b>MBU ID Emp #:</b> 447908	

Activity Description	Date/Time	Cht #	Rate bbl/min	Volume bbl		Pressure psig		Comments
				Stage	Total	Tubing	Casing	
Call Out	12/29/2010 07:00							
Pre-Convoy Safety Meeting	12/29/2010 11:00							
Crew Leave Yard	12/29/2010 11:30							
Arrive At Loc	12/29/2010 20:30							
Assessment Of Location Safety Meeting	12/29/2010 20:45							
Other	12/29/2010 21:00							SPOT EQUIPMENT
Pre-Rig Up Safety Meeting	12/29/2010 22:00							
Rig-Up Equipment	12/29/2010 22:15							
Pre-Job Safety Meeting	12/29/2010 23:45							
Start Job	12/30/2010 01:48							TD:2720, TP:2692, SJ:53, MW:9.6, CASING: 9.625 36#, OH: 14.75"
Test Lines	12/30/2010 01:54						3000	
Pump Spacer 2	12/30/2010 01:58		5	20			220.0	FRESH WATER
Pump Spacer	12/30/2010 02:03		5	20			170.0	FRESHWATER WITH 5 GALLONS OF LGC
Pump Spacer 1	12/30/2010 02:06		5	20			195.0	FRESH WATER
Pump Lead Cement	12/30/2010 02:11		7	335.3			260.0	808 SACKS MIXED @ 12.3, 2.33 YIELD, 12.62 GAL/SACK
Pump Tail Cement	12/30/2010 03:00		7	46.1			160.0	125 SACKS MIXED @ 12.8, 2.07 YIELD, 10.67 GAL/SACK

Activity Description	Date/Time	Cht #	Rate bbl/min	Volume bbl		Pressure psig		Comments
				Stage	Total	Tubing	Casing	
Shutdown	12/30/2010 03:11							
Drop Top Plug	12/30/2010 03:12							
Pump Displacement	12/30/2010 03:13		6	205.4			400.0	FRSHWATER
Slow Rate	12/30/2010 03:45		2	195.4			720.0	SLOWED RATE LAST 10BBLS OF DISPLACEMENT
Bump Plug	12/30/2010 03:47		2	205.4			770.0	BUMP PLUG AND WENT 500PSI OVER TO 1270PSI
Check Floats	12/30/2010 03:49							FLOATS HELD
Other	12/30/2010 04:16						680.0	PUMP DOWN PARRISITE STRING TO CLEAR LINE
Pressure Test	12/30/2010 04:30						1500	PRESSURE TEST CASING TO 1500 PSI HOLD FOR 30MIN
End Job	12/30/2010 05:00							HAD NO CIRCULATION UNTIL 40BBLS OF SPACER GONE. HAD GOOD CIRCULATION THOROUGHOUT JOB AFTER CIRCULATION WAS BROKE. RIG USED 40#'S OF SUGAR
Post-Job Safety Meeting (Pre Rig-Down)	12/30/2010 05:05							
Rig-Down Equipment	12/30/2010 05:15							
Pre-Convoy Safety Meeting	12/30/2010 06:45							
Crew Leave Location	12/30/2010 07:00							THANKS FOR USING HALLIBURTON MIKE TRIPLETT AND CREW

# OXY

## SURFACE CC 697-10-42B



### Local Event Log

1 START JOB	01:48:58	2 PRESSURE TEST	01:54:16
3 START SPACER 1	01:58:41	4 START SPACER 2	02:03:11
5 START SPACER 3	02:06:54	6 START LEAD	02:11:36
7 START TAIL	03:00:15	8 SHUTDOWN	03:11:45
9 DROP PLUG	03:11:49	10 START DISPLACEMENT	03:11:52
11 SLOW RATE	03:45:38	12 BUMP PLUG	03:47:45
13 CHECK FLOATS	03:49:13	14 PUMP THROUGH PARISITE STRING	04:16:26
15 PRESSURE TEST CASING	04:30:32	16 RELEASE PRESSURE	04:56:45
17 END JOB	04:57:51		

Customer: OXY  
Well Description: CC 697-10-42B  
ADC USED: YES

Job Date: 30-Dec-2010  
JOB TYPE: SURFACE  
CEMENT SUPERVISOR: MIKE TRIPLETT

Sales Order #: 7841746  
COMPANY REP: HENRY COOMBS  
ELITE/OPERATOR: 2/JESSE HAYES

OptiCem v6.4.9  
30-Dec-10 05:01