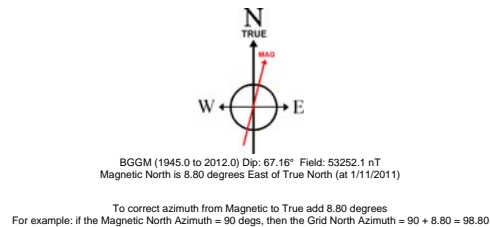
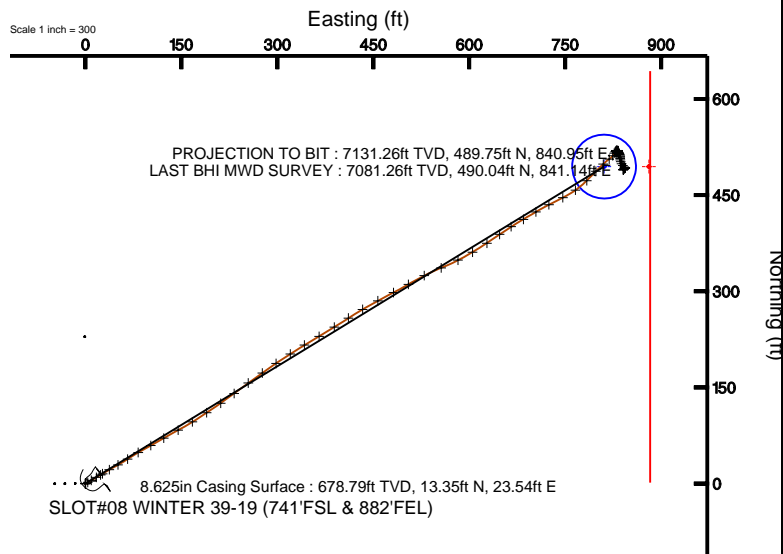
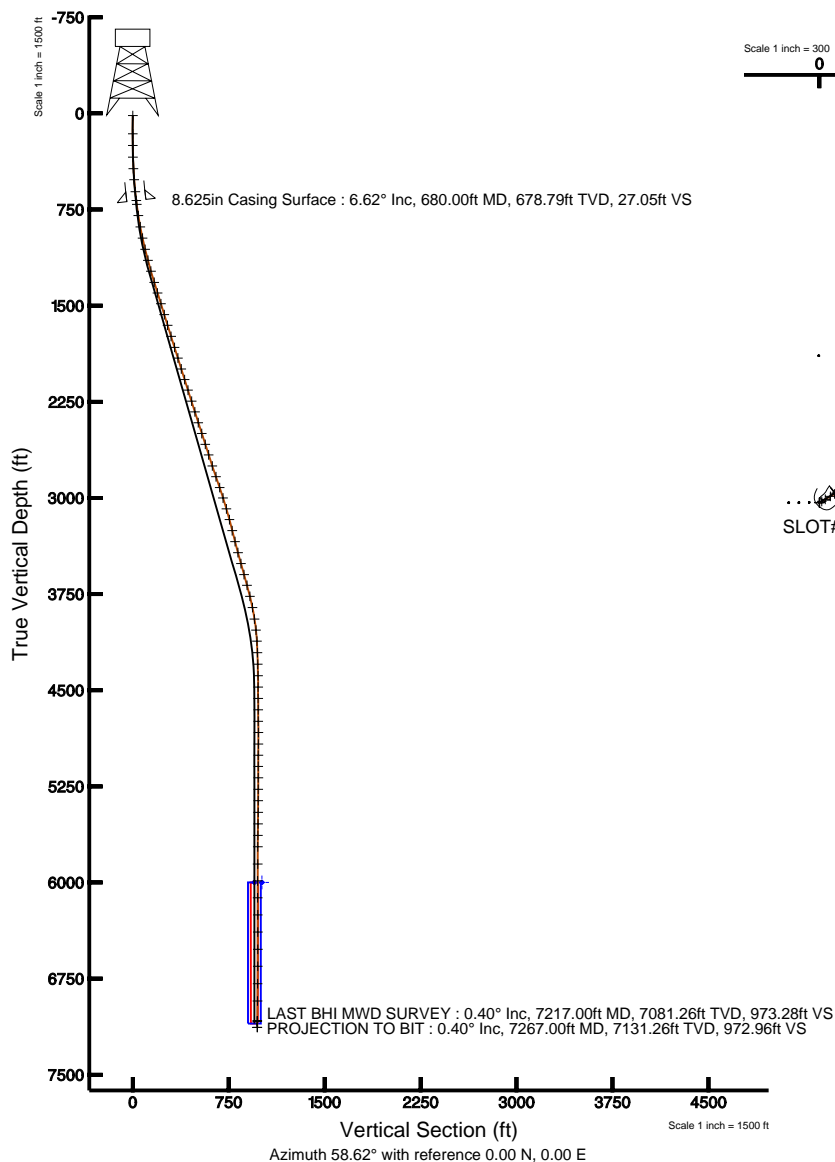


# KERR MCGEE OIL & GAS ONSHORE LP

Location: COLORADO Slot: SLOT#08 WINTER 39-19 (741'FSL & 882'FEL)  
 Field: WELD COUNTY (KERR MCGEE) Well: WINTER 39-19  
 Facility: SEC.19-T6N-R64W Wellbore: WINTER 39-19 PWB



Plot reference wellpath is WINTER 39-19 (REV-A.0) PWB	
True vertical depths are referenced to XTREME 6 (RKB)	Grid System: NAD83 / Lambert Colorado State Planes, Northern Zone (501), US feet
Measured depths are referenced to XTREME 6 (RKB)	North Reference: True north
XTREME 6 (RKB) to Mean Sea Level: 4721 feet	Scale: True distance
Mean Sea Level to Mud line (Facility: SEC.19-T6N-R64W): 0 feet	Depths are in feet
Coordinates are in feet referenced to Slot	Created by: cookdamm on 2/3/2011





# Actual Wellpath Report

WINTER 39-19 AWP

Page 1 of 5



INTEQ

## REFERENCE WELLPATH IDENTIFICATION

Operator	KERR MCGEE OIL & GAS ONSHORE LP	Slot	SLOT#08 WINTER 39-19 (741'FSL & 882'FEL)
Area	COLORADO	Well	WINTER 39-19
Field	WELD COUNTY (KERR MCGEE)	Wellbore	WINTER 39-19 AWB
Facility	SEC.19-T6N-R64W		

## REPORT SETUP INFORMATION

Projection System	NAD83 / Lambert Colorado State Planes, Northern Zone (501), US feet	Software System	WellArchitect® 2.0
North Reference	True	User	Cookdanm
Scale	0.999964	Report Generated	2/3/2011 at 10:19:04 AM
Convergence at slot	0.59° East	Database/Source file	Denver Server/WINTER_39-19_AWB.xml

## WELLPATH LOCATION

	Local coordinates		Grid coordinates		Geographic coordinates	
	North[ft]	East[ft]	Easting[USft]	Northing[USft]	Latitude	Longitude
Slot Location	-1177.36	2376.80	3254062.64	1413998.25	40°27'58.450"N	104°35'12.739"W
Facility Reference Pt			3251674.04	1415151.26	40°28'10.085"N	104°35'43.490"W
Field Reference Pt			3197771.84	1268891.29	40°04'09.600"N	104°47'36.000"W

## WELLPATH DATUM

Calculation method	Minimum curvature	XTREME 6 (RKB) to Facility Vertical Datum	4721.00ft
Horizontal Reference Pt	Slot	XTREME 6 (RKB) to Mean Sea Level	4721.00ft
Vertical Reference Pt	XTREME 6 (RKB)	Facility Vertical Datum to Mud Line (Facility)	0.00ft
MD Reference Pt	XTREME 6 (RKB)	Section Origin	N 0.00, E 0.00 ft
Field Vertical Reference	Mean Sea Level	Section Azimuth	58.62°



# Actual Wellpath Report

WINTER 39-19 AWP

Page 2 of 5



INTEQ

## REFERENCE WELLPATH IDENTIFICATION

Operator	KERR MCGEE OIL & GAS ONSHORE LP	Slot	SLOT#08 WINTER 39-19 (741'FSL & 882'FEL)
Area	COLORADO	Well	WINTER 39-19
Field	WELD COUNTY (KERR MCGEE)	Wellbore	WINTER 39-19 AWB
Facility	SEC.19-T6N-R64W		

## WELLPATH DATA (78 stations) † = interpolated/extrapolated station

MD [ft]	Inclination [°]	Azimuth [°]	TVD [ft]	Vert Sect [ft]	North [ft]	East [ft]	DLS [°/100ft]	Comments
0.00†	0.000	241.900	0.00	0.00	0.00	0.00	0.00	
16.00	0.000	241.900	16.00	0.00	0.00	0.00	0.00	
158.00	0.200	241.900	158.00	-0.25	-0.12	-0.22	0.14	
250.00	0.300	221.100	250.00	-0.64	-0.37	-0.52	0.15	
341.00	1.300	62.900	340.99	0.16	-0.08	0.24	1.74	
430.00	3.400	60.100	429.91	3.81	1.69	3.43	2.36	
517.00	5.000	59.800	516.68	10.18	4.89	8.94	1.84	
611.00	6.200	60.100	610.23	19.35	9.48	16.89	1.28	
710.00	6.800	59.400	708.59	30.55	15.13	26.56	0.61	
799.00	9.100	58.400	796.73	42.86	21.50	37.10	2.59	
888.00	11.100	63.300	884.35	58.44	29.03	50.75	2.44	
978.00	11.300	54.900	972.64	75.88	38.00	65.70	1.82	
1067.00	14.200	60.800	1059.44	95.49	48.34	82.37	3.57	
1156.00	15.100	61.100	1145.54	117.98	59.27	102.05	1.01	
1244.00	15.700	59.800	1230.38	141.34	70.80	122.37	0.79	
1335.00	17.100	62.200	1317.68	167.00	83.23	144.85	1.71	
1422.00	17.400	57.300	1400.77	192.77	96.22	167.11	1.70	
1510.00	17.400	57.300	1484.74	219.08	110.44	189.26	0.00	
1599.00	17.300	55.200	1569.70	245.60	125.18	211.32	0.71	
1686.00	17.600	53.000	1652.69	271.60	140.48	232.45	0.83	
1777.00	17.500	54.000	1739.46	298.93	156.80	254.50	0.35	
1867.00	17.300	55.000	1825.34	325.77	172.43	276.41	0.40	
1954.00	17.800	56.000	1908.29	351.97	187.29	298.03	0.67	
2043.00	17.200	56.300	1993.17	378.70	202.20	320.26	0.68	
2130.00	17.500	59.400	2076.21	404.64	215.99	342.22	1.12	
2217.00	18.400	59.800	2158.98	431.44	229.56	365.35	1.04	
2307.00	17.700	57.300	2244.55	459.32	244.10	389.14	1.16	
2395.00	16.800	57.300	2328.59	485.41	258.19	411.10	1.02	
2483.00	17.500	60.100	2412.68	511.35	271.66	433.27	1.23	
2572.00	18.500	61.200	2497.32	538.84	285.13	457.24	1.19	
2661.00	17.800	63.000	2581.89	566.51	298.11	481.74	1.01	
2747.00	18.000	59.400	2663.73	592.90	310.84	504.89	1.31	
2838.00	18.200	62.900	2750.23	621.13	324.47	529.64	1.21	
2927.00	20.000	67.800	2834.33	650.02	336.56	556.11	2.71	
3016.00	18.000	62.600	2918.49	678.77	348.64	582.42	2.94	
3102.00	17.100	59.800	3000.49	704.67	361.12	605.14	1.43	
3191.00	17.600	56.600	3085.44	731.20	375.10	627.69	1.21	
3278.00	14.700	53.800	3169.00	755.35	388.87	647.58	3.45	
3367.00	13.500	58.700	3255.32	776.99	400.93	665.57	1.90	
3455.00	15.900	60.100	3340.43	799.31	412.28	684.80	2.76	
3544.00	13.700	58.400	3426.47	822.04	423.88	704.35	2.52	
3633.00	16.700	63.300	3512.35	845.33	435.15	724.75	3.66	
3722.00	15.100	62.900	3597.95	869.64	446.18	746.50	1.80	
3809.00	15.400	55.600	3681.89	892.48	457.87	766.12	2.23	
3898.00	14.900	44.300	3767.81	915.37	472.74	783.86	3.36	



# Actual Wellpath Report

WINTER 39-19 AWP

Page 3 of 5



INTEQ

## REFERENCE WELLPATH IDENTIFICATION

Operator	KERR MCGEE OIL & GAS ONSHORE LP	Slot	SLOT#08 WINTER 39-19 (741'FSL & 882'FEL)
Area	COLORADO	Well	WINTER 39-19
Field	WELD COUNTY (KERR MCGEE)	Wellbore	WINTER 39-19 AWB
Facility	SEC.19-T6N-R64W		

## WELLPATH DATA (78 stations)

MD [ft]	Inclination [°]	Azimuth [°]	TVD [ft]	Vert Sect [ft]	North [ft]	East [ft]	DLS [°/100ft]	Comments
3988.00	11.300	44.700	3855.46	935.15	487.29	798.15	4.00	
4079.00	9.100	46.400	3945.01	950.84	498.59	809.64	2.44	
4166.00	7.000	55.600	4031.16	962.86	506.34	818.99	2.82	
4253.00	3.500	26.400	4117.79	970.40	511.71	824.55	4.94	
4343.00	2.300	32.700	4207.67	974.35	515.69	826.75	1.38	
4433.00	1.100	44.700	4297.63	976.81	517.83	828.33	1.38	
4523.00	1.400	34.800	4387.61	978.66	519.34	829.57	0.41	
4611.00	0.400	152.900	4475.60	979.62	519.95	830.32	1.85	
4700.00	0.300	98.500	4564.60	979.77	519.64	830.69	0.37	
4788.00	0.300	106.800	4652.60	980.10	519.54	831.14	0.05	
4878.00	0.400	86.600	4742.60	980.54	519.49	831.68	0.17	
4966.00	0.800	65.100	4830.59	981.42	519.77	832.54	0.51	
5056.00	0.900	185.600	4920.59	981.62	519.33	833.05	1.64	
5143.00	1.100	169.500	5007.58	980.91	517.83	833.13	0.39	
5230.00	0.900	134.300	5094.56	980.78	516.53	833.77	0.73	
5319.00	0.700	156.500	5183.56	980.88	515.54	834.49	0.41	
5409.00	0.700	154.000	5273.55	980.75	514.54	834.95	0.03	
5498.00	1.300	157.500	5362.54	980.55	513.12	835.57	0.68	
5589.00	1.200	174.000	5453.51	979.98	511.22	836.07	0.41	
5679.00	1.200	181.100	5543.49	979.07	509.34	836.15	0.17	
5769.00	1.400	178.300	5633.47	978.02	507.30	836.16	0.23	
5858.00	1.300	170.500	5722.45	977.10	505.22	836.36	0.23	
5992.00	1.300	163.500	5856.41	976.15	502.26	837.04	0.12	
6124.00	1.600	150.100	5988.37	975.71	499.23	838.39	0.34	
6256.00	1.500	141.100	6120.32	975.89	496.29	840.39	0.20	
6389.00	1.100	128.000	6253.29	976.57	494.15	842.49	0.37	
6523.00	0.400	140.000	6387.28	977.09	493.00	843.81	0.53	
6658.00	0.100	154.700	6522.27	977.15	492.53	844.16	0.23	
6790.00	0.400	244.300	6654.27	976.68	492.22	843.79	0.31	
6926.00	0.400	239.100	6790.27	975.73	491.77	842.96	0.03	
7061.00	0.600	227.500	6925.26	974.57	491.05	842.03	0.17	
7217.00	0.400	212.400	7081.26	973.28	490.04	841.14	0.15	LAST BHI MWD SURVEY
7267.00	0.400	212.400	7131.26	972.96	489.75	840.95	0.00	PROJECTION TO BIT



# Actual Wellpath Report

WINTER 39-19 AWP

Page 4 of 5



INTEQ

REFERENCE WELLPATH IDENTIFICATION			
Operator	KERR MCGEE OIL & GAS ONSHORE LP	Slot	SLOT#08 WINTER 39-19 (741'FSL & 882'FEL)
Area	COLORADO	Well	WINTER 39-19
Field	WELD COUNTY (KERR MCGEE)	Wellbore	WINTER 39-19 AWB
Facility	SEC.19-T6N-R64W		

HOLE & CASING SECTIONS Ref Wellbore: WINTER 39-19 AWB Ref Wellpath: WINTER 39-19 AWP									
String/Diameter	Start MD [ft]	End MD [ft]	Interval [ft]	Start TVD [ft]	End TVD [ft]	Start N/S [ft]	Start E/W [ft]	End N/S [ft]	End E/W [ft]
12.25in Open Hole	16.00	690.00	674.00	16.00	688.73	0.00	0.00	13.93	24.54
8.625in Casing Surface	16.00	680.00	664.00	16.00	678.79	0.00	0.00	13.35	23.54
7.875in Open Hole	680.00	7267.00	6587.00	678.79	7131.26	13.35	23.54	489.75	840.95

TARGETS									
Name	MD [ft]	TVD [ft]	North [ft]	East [ft]	Grid East [srv ft]	Grid North [srv ft]	Latitude	Longitude	Shape
WINTER 39-19 GEO TARGET 50' RADIUS (1230'FSL & 70'FEL, REV-1)		6000.00	494.75	811.08	3254868.55	1414501.32	40°28'03.338"N	104°35'02.245"W	circle
WINTER 39-19 HARDLINE 70'E OF GEO TARGET		6000.00	494.75	881.08	3254938.54	1414502.03	40°28'03.338"N	104°35'01.340"W	point

WELLPATH COMPOSITION Ref Wellbore: WINTER 39-19 AWB Ref Wellpath: WINTER 39-19 AWP				
Start MD [ft]	End MD [ft]	Positional Uncertainty Model	Log Name/Comment	Wellbore
16.00	611.00	NaviTrak (Standard)	BHI MWD SURVEY 12.25 HOLE <158-611>	WINTER 39-19 AWB
611.00	7217.00	NaviTrak (Standard)	BHI MWD SURVEY 7.875 HOLE <710-7217>	WINTER 39-19 AWB
7217.00	7267.00	Blind Drilling (std)	Projection to bit	WINTER 39-19 AWB



# Actual Wellpath Report

WINTER 39-19 AWP

Page 5 of 5



INTEQ

## REFERENCE WELLPATH IDENTIFICATION

Operator	KERR MCGEE OIL & GAS ONSHORE LP	Slot	SLOT#08 WINTER 39-19 (741'FSL & 882'FEL)
Area	COLORADO	Well	WINTER 39-19
Field	WELD COUNTY (KERR MCGEE)	Wellbore	WINTER 39-19 AWB
Facility	SEC.19-T6N-R64W		

## WELLPATH COMMENTS

MD [ft]	Inclination [°]	Azimuth [°]	TVD [ft]	Comment
7217.00	0.400	212.400	7081.26	LAST BHI MWD SURVEY
7267.00	0.400	212.400	7131.26	PROJECTION TO BIT