

# WELL LOCATION CERTIFICATE

THIS MAP IS A GIS EXHIBIT AND DOES NOT REPRESENT A BOUNDARY SURVEY.

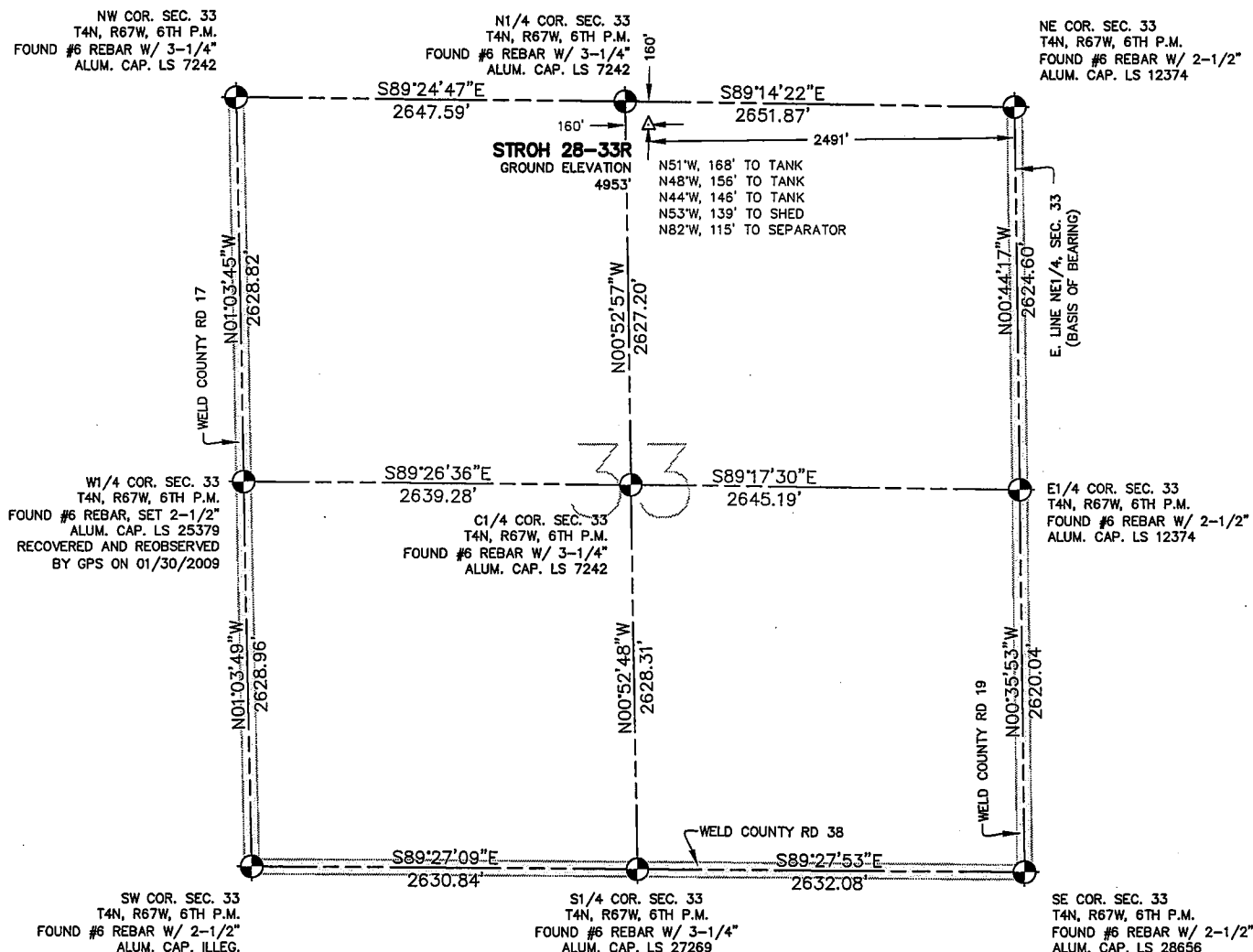


EXHIBIT MAP



## WELL LOCATION CERTIFICATE

IN ACCORDANCE WITH A REQUEST FROM SHERRY GLASS OF KP KAUFFMAN INC., CIVIL ARTS-DREXEL GROUP, INC. HAS DETERMINED THE LOCATION OF STROH 28-33R WELL SITE TO BE 2491' FEL AND 160' FNL AS MEASURED AT NINETY (90) DEGREES FROM THE SECTION LINES OF SECTION 33, T4N, R67W, OF THE 6TH P.M., WELD COUNTY, CO.

## LEGEND

- ⊕ = FOUND SURVEY MONUMENT
- ▭ = ROAD
- (C) = CALCULATED DIMENSION
- △ = PROPOSED WELL LOCATION
- ◇ = BOTTOM OF HOLE LOCATION
- = OTHER PROPOSED WELL LOCATION
- ⊙ = EXISTING WELL LOCATION

## NOTES

1. BEARINGS SHOWN ON THIS MAP ARE BASED UPON GPS OBSERVATIONS MADE ON 03/29/2007 BY KIPPER GOLDSBERRY BETWEEN THE E1/4 CORNER AND THE NORTHEAST CORNER OF SECTION 33, T4N, R67W, OF THE 6TH P.M., HAVING A BEARING OF N00°44'17"W, AS MONUMENTED AND SHOWN HEREON.
2. ELEVATIONS ARE BASED UPON NAVD 88 DATUM.
3. THE LOCATION FALLS IN AN AGRICULTURAL FIELD.
4. THIS WELL LOCATION WAS SET PER THE SURFACE OWNER'S REQUEST.

## PROPOSED SURFACE HOLE DATA

(NAD 83)  
LATITUDE: 40.27616 N  
LONGITUDE: 104.89503 W  
PDOP: <6

## NOTICE

ACCORDING TO COLORADO LAW YOU MUST COMMENCE ANY LEGAL ACTION BASED UPON ANY DEFECT IN THIS SURVEY WITHIN THREE YEARS AFTER YOU FIRST DISCOVERED SUCH DEFECT. IN NO EVENT MAY ANY ACTION BASED UPON ANY DEFECT IN THIS SURVEY BE COMMENCED MORE THAN TEN YEARS FROM THE DATE OF THE CERTIFICATION SHOWN HEREON.

I HEREBY CERTIFY THAT THIS WELL LOCATION CERTIFICATE WAS PREPARED BY ME OR UNDER MY DIRECT SUPERVISION ON 03/06/2009 FOR AND ON BEHALF OF KP KAUFFMAN, INC. THAT IT IS NOT A LAND SURVEY, PLAT OR AN IMPROVEMENT SURVEY PLAT AND THAT IT IS NOT TO BE RELIED UPON FOR ESTABLISHMENT OF FENCE BUILDING, OR OTHER FUTURE IMPROVEMENT LINES.

PETER D. STEGER  
COLORADO REGISTERED PROFESSIONAL  
LAND SURVEYOR NO. 25379

DATE: 03/06/2009



ENGINEERING :: 1860 Lethand Circle, Suite A  
PLANNING :: Longmont, CO 80501  
SURVEYING :: P 303.682.1131  
F 303.682.1149

