
OXY GRAND JUNCTION EBUSINESS

**CC 697-15-19B
GRAND VALLEY
Garfield County , Colorado**

Cement Surface Casing
27-Dec-2010

Post Job Summary

The Road to Excellence Starts with Safety

Sold To #: 344034	Ship To #: 2827470	Quote #:	Sales Order #: 7841654
Customer: OXY GRAND JUNCTION EBUSINESS	Customer Rep: Silva, Marco		
Well Name: CC	Well #: 697-15-19B	API/UWI #: 05-045-19499	
Field: GRAND VALLEY	City (SAP): PARACHUTE	County/Parish: Garfield	State: Colorado
Lat: N 39.53 deg. OR N 39 deg. 31 min. 46.348 secs.	Long: W 108.213 deg. OR W -109 deg. 47 min. 12.955 secs.		
Contractor: H&P 353	Rig/Platform Name/Num: H&P353		
Job Purpose: Cement Surface Casing			
Well Type: Development Well	Job Type: Cement Surface Casing		
Sales Person: DUNNING, DUSTIN	Srvc Supervisor: ANDREWS, ANTHONY	MBU ID Emp #: 321604	

Job Personnel

HES Emp Name	Exp Hrs	Emp #	HES Emp Name	Exp Hrs	Emp #	HES Emp Name	Exp Hrs	Emp #
ANDREWS, ANTHONY Michael		321604	ARNOLD, EDWARD John		439784	COSTELDIS, BROCK James		476115
WINKER, STEVEN		478776						

Equipment

HES Unit #	Distance-1 way	HES Unit #	Distance-1 way	HES Unit #	Distance-1 way	HES Unit #	Distance-1 way

Job Hours

Date	On Location Hours	Operating Hours	Date	On Location Hours	Operating Hours	Date	On Location Hours	Operating Hours
12/27/10	14	6						
TOTAL	Total is the sum of each column separately							

Job

Formation Name	Job	Date	Time	Time Zone
Formation Depth (MD)	Top	Bottom	Called Out	26 - Dec - 2010 19:30 MST
Form Type	BHST	On Location	27 - Dec - 2010 02:30	MST
Job depth MD	2730. ft	Job Depth TVD	2730. ft	Job Started 27 - Dec - 2010 09:30 MST
Water Depth	Wk Ht Above Floor	4. ft	Job Completed	27 - Dec - 2010 14:31 MST
Perforation Depth (MD)	From	To	Departed Loc	27 - Dec - 2010 16:30 MST

Well Data

Description	New / Used	Max pressure Psig	Size in	ID in	Weight lbm/ft	Thread	Grade	Top MD ft	Bottom MD ft	Top TVD ft	Bottom TVD ft
-------------	------------	-------------------	---------	-------	---------------	--------	-------	-----------	--------------	------------	---------------

Sales/Rental/3rd Party (HES)

Description	Qty	Qty uom	Depth	Supplier
PLUG,CMTG,TOP,9 5/8,HWE,8.16 MIN/9.06 MA	1	EA		

Tools and Accessories

Type	Size	Qty	Make	Depth	Type	Size	Qty	Make	Depth	Type	Size	Qty	Make
Guide Shoe					Packer					Top Plug			
Float Shoe					Bridge Plug					Bottom Plug			
Float Collar					Retainer					SSR plug set			
Insert Float										Plug Container			
Stage Tool										Centralizers			

Miscellaneous Materials

Gelling Agt	Conc	Surfactant	Conc	Acid Type	Qty	Conc	%
Treatment Fld	Conc	Inhibitor	Conc	Sand Type	Size	Qty	

Fluid Data									
Stage/Plug #: 1									
Fluid #	Stage Type	Fluid Name	Qty	Qty uom	Mixing Density lbm/gal	Yield ft ³ /sk	Mix Fluid Gal/sk	Rate bbl/min	Total Mix Fluid Gal/sk
1	Water Spacer		10	bbl	8.33	.0	.0	.0	
2	GEL WATER		20	bbl	.	.0	.0	.0	
3	Water Spacer		10	bbl	.	.0	.0	.0	
4	Lead Cement	VERSACEM (TM) SYSTEM (452010)	870	sacks	12.3	2.33	12.62		12.62
		12.62 Gal	FRESH WATER						
5	Tail Cement	VERSACEM (TM) SYSTEM (452010)	134	sacks	12.8	2.07	10.67		10.67
		10.67 Gal	FRESH WATER						
6	Displacement		205.4	bbl	.	.0	.0	.0	
7	Topout Cement	HALCEM (TM) SYSTEM (452986)	0	sacks	12.5	1.97	10.96		10.96
		10.96 Gal	FRESH WATER (350 DELIVERED, 0 USED)						
Calculated Values		Pressures		Volumes					
Displacement	205.4	Shut In: Instant		Lost Returns	Y	Cement Slurry	410.4	Pad	
Top Of Cement	SURFACE	5 Min		Cement Returns	200	Actual Displacement	205.4	Treatment	
Frac Gradient		15 Min		Spacers	40	Load and Breakdown		Total Job	655.8
Rates									
Circulating	RIG	Mixing	6-4	Displacement	4-2	Avg. Job	4		
Cement Left In Pipe	Amount	53 ft	Reason	Shoe Joint					
Frac Ring # 1 @	ID	Frac ring # 2 @	ID	Frac Ring # 3 @	ID	Frac Ring # 4 @	ID		
The Information Stated Herein Is Correct				Customer Representative Signature					

The Road to Excellence Starts with Safety

Sold To #: 344034		Ship To #: 2827470		Quote #:		Sales Order #: 7841654	
Customer: OXY GRAND JUNCTION EBUSINESS				Customer Rep: Silva, Marco			
Well Name: CC			Well #: 697-15-19B			API/UWI #: 05-045-19499	
Field: GRAND VALLEY		City (SAP): PARACHUTE		County/Parish: Garfield			State: Colorado
Legal Description:							
Lat: N 39.53 deg. OR N 39 deg. 31 min. 46.348 secs.				Long: W 108.213 deg. OR W -109 deg. 47 min. 12.955 secs.			
Contractor: H&P 353			Rig/Platform Name/Num: H&P353				
Job Purpose: Cement Surface Casing						Ticket Amount:	
Well Type: Development Well			Job Type: Cement Surface Casing				
Sales Person: DUNNING, DUSTIN			Srvc Supervisor: ANDREWS, ANTHONY			MBU ID Emp #: 321604	

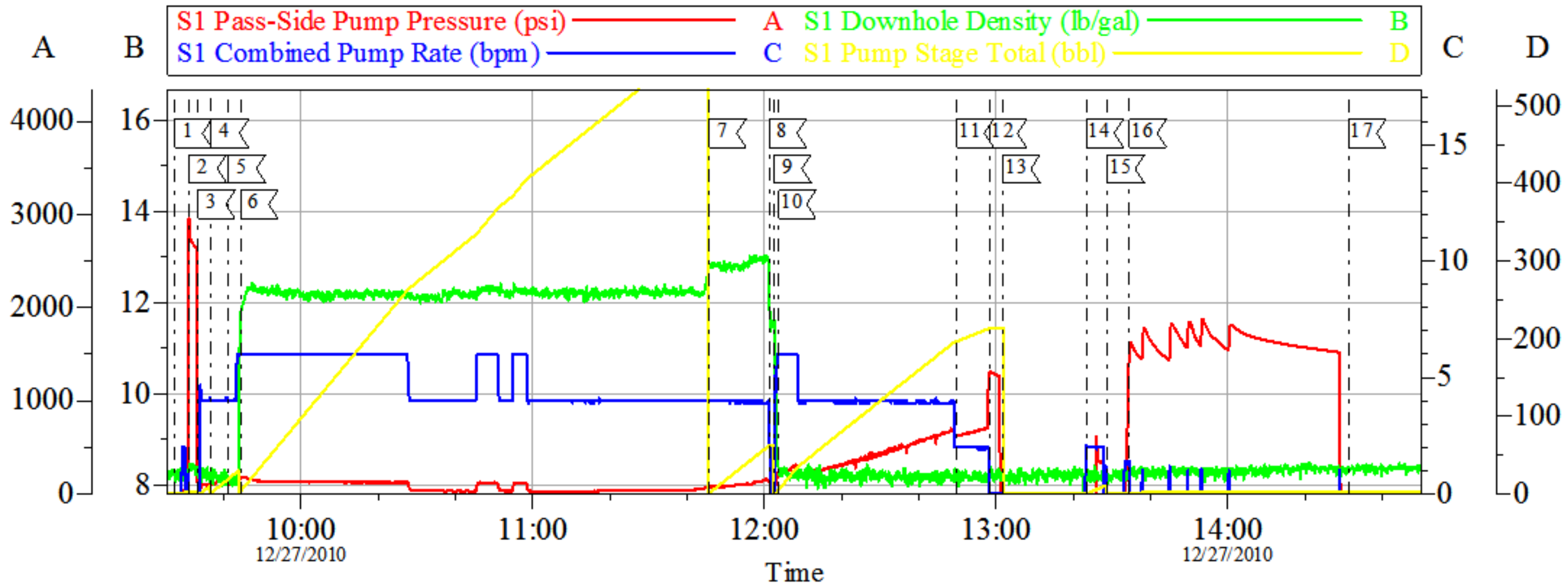
Activity Description	Date/Time	Cht #	Rate bbl/min	Volume bbl		Pressure psig		Comments
				Stage	Total	Tubing	Casing	
Call Out	12/26/2010 19:30							
Pre-Convoy Safety Meeting	12/26/2010 21:50							
Crew Leave Yard	12/26/2010 22:00							
Arrive At Loc	12/27/2010 02:15							
Assessment Of Location Safety Meeting	12/27/2010 02:20							
Other	12/27/2010 06:30							SPOT EQUIPMENT
Pre-Rig Up Safety Meeting	12/27/2010 06:35							
Rig-Up Equipment	12/27/2010 06:45							
Pre-Job Safety Meeting	12/27/2010 09:00							
Start Job	12/27/2010 09:30							TD: 2730 TP: 2710 SJ: 53' MW: 10.2 9 5/8" 36#/FT CSG IN 14 3/4" OH
Test Lines	12/27/2010 09:31							2000 PSI TEST
Pump Spacer	12/27/2010 09:34		6	10			70.0	FRESH H2O SPACER 1
Pump Spacer	12/27/2010 09:36		6	20			126.0	LGC SPACER - 20 BBLs 2.5 GAL LGC/ 10 BBL H2O
Pump Spacer	12/27/2010 09:41		6	10			106.0	FRESH H2O SPACER
Pump Lead Cement	12/27/2010 09:44		6	361			158.0	870SKS @ 12.3 PPG 2.33 YLD 12.62 GAL/SK H2O

Activity Description	Date/Time	Cht #	Rate bbl/ min	Volume bbl		Pressure psig		Comments
				Stage	Total	Tubing	Casing	
Pump Tail Cement	12/27/2010 11:45		4	49.4			76.0	134 SKS @ 12.8 PPG 2.07 YLD 10.67 GAL/SK H2O
Shutdown	12/27/2010 12:01							
Drop Plug	12/27/2010 12:02							
Pump Displacement	12/27/2010 12:02		4		205.4		259.0	FRESH H2O DISPLACEMENT. HAD TO PUMP DISPLACEMENT AT 4 BPM DUE TO CELLAR PUMPS NOT KEEPING UP
Slow Rate	12/27/2010 12:49		2	195			630.0	SLOW AT 195 TO BUMP
Bump Plug	12/27/2010 12:58		2	205.4			1310. 0	PLUG BUMPED AT CALCULATED DISPLACEMENT
Check Floats	12/27/2010 13:01							FLOATS HELD
Other	12/27/2010 13:23		2	10			600.0	PUMP DOWN PARASITE STRING.
Pressure Test	12/27/2010 13:34							CUSTOMER REQUESTED CASING PRESSURE TEST OF 1500 PSI FOR 30 MINUTES.
End Job	12/27/2010 14:31							350 SKS TOPOUT DELIVERED TO LOCATION, NONE USED. TRUCK TO STAY OFF LOCATION FOR LATER USE.

Cementing Job Log

Activity Description	Date/Time	Cht #	Rate bbl/ min	Volume bbl		Pressure psig		Comments
				Stage	Total	Tubing	Casing	
Post-Job Safety Meeting (Pre Rig-Down)	12/27/2010 15:15							HAD NO RETURNS UNTIL WELL INTO LEAD CEMENT, RETURNS WERE SPIRATIC AT BEST, ONCE ON DISPLACEMENT GAINED FULL RETURNS. CAUGHT CEMENT TO SURFACE AT START OF DISPLACEMENT. CIRCULATED 205 BBLS CEMENT TO SURFACE.
Rig-Down Equipment	12/27/2010 15:30							PIPE WAS LEFT STATIC THROUGHOUT JOB. PLUG BUMPED AT CALCULATED DISPLACEMENT. FLOATS HELD.
Pre-Convoy Safety Meeting	12/27/2010 16:20							
Crew Leave Location	12/27/2010 16:30							THANK YOU FOR CHOOSING HALLIBURTON CEMENTING OF GRAND JUNCTION, COLORADO ANTHONY ANDREWS AND CREW

HP 353 - OXY
9 5/8" SURFACE



Local Event Log			
Intersection	SPPP	Intersection	SPPP
1 START JOB	09:27:17 -2.000	2 TEST LINES	09:31:06 286.4
3 PUMP H2O SPACER 1	09:33:19 76.94	4 PUMP LGC SPACER	09:36:48 102.8
5 PUMP H2O SPACER 2	09:41:13 105.0	6 PUMP LEAD CEMENT	09:44:25 176.9
7 PUMP TAIL CEMENT	11:45:40 76.16	8 SHUTDOWN	12:01:13 139.6
9 DROP PLUG	12:02:28 14.94	10 PUMP DISPLACEMENT	12:03:43 255.5
11 SLOW RATE	12:49:46 630.3	12 BUMP PLUG	12:58:19 131.0
13 CHECK FLOATS	13:01:48 -36.00	14 PUMP DOWN PARASITE	13:23:23 -26.56
15 SHUTDOWN	13:28:48 -14.90	16 PRESSURE TEST CSG	13:34:31 158.5
17 RELEASE PRESSURE/ END JOB	14:31:20 -12.00		

Customer: OXY
Well #: CC 697-15-19B
Customer Rep: HENRY COOMBS

Job Date: 27-Dec-2010
Job Type: SURFACE
Pump Truck: ELITE 5/ ED ARNOLD

Sales Order #: 7841654
ADC Used: YES
Supervisor: ANTHONY ANDREWS

OptiCem v6.3.4
27-Dec-10 15:10