

Encana OIL & GAS (USA) INC.

ADDENDUM TO LEGAL PLAT FOR

WELL PAD B36 496 (AS-BUILT)

SECTION 36, T4S, R96W, 6th P.M.

LOT 2

SCALE: 1" = 60'

DATE: 08-03-09

Drawn By: D.R.B.

Rev: 08-17-09 D.R.B.

Rev: 08-31-09 D.R.B.

Rev: 09-21-09 D.R.B.

Rev: 06-24-10 D.R.B.

Rev: 01-11-11 D.R.B.

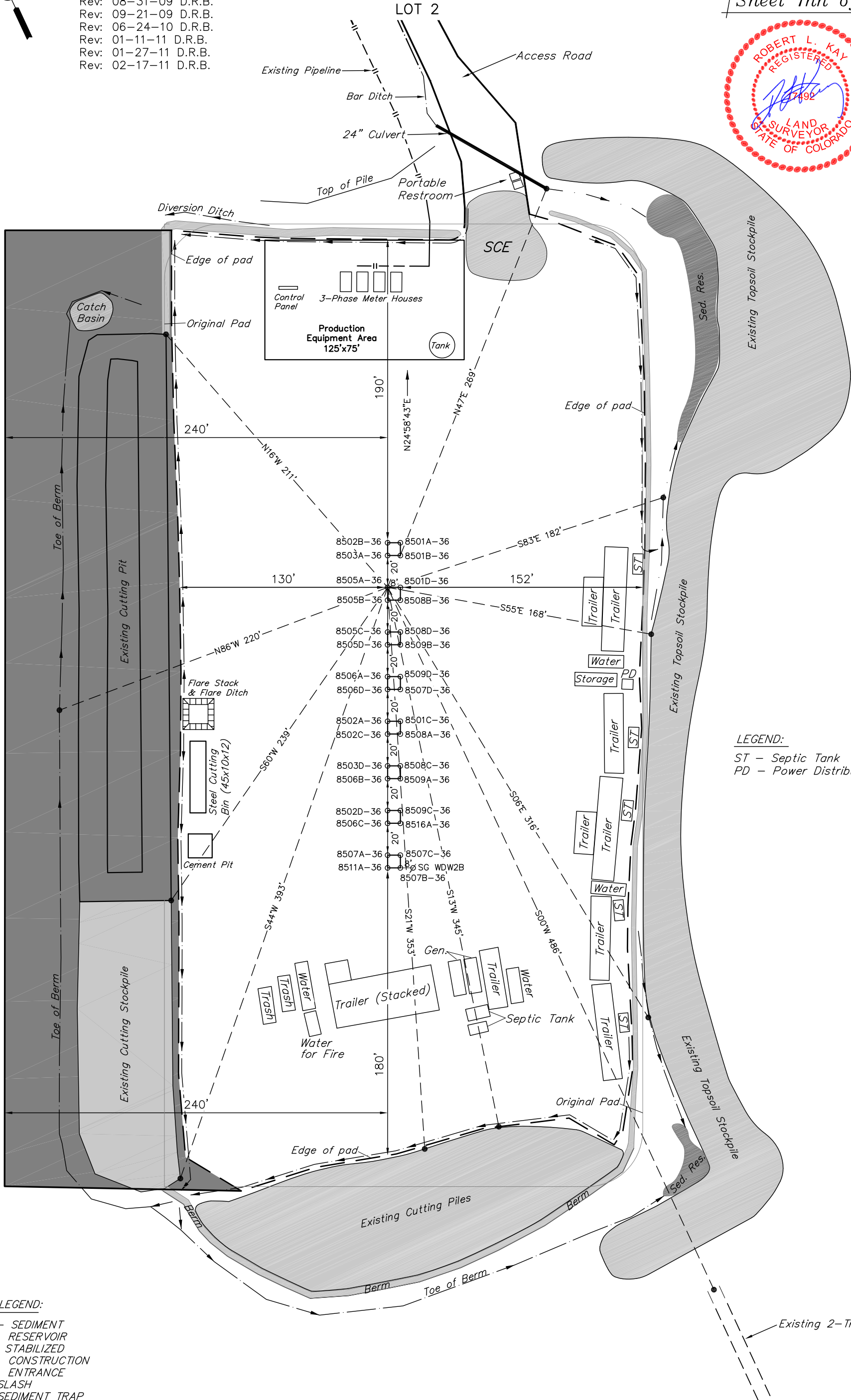
Rev: 01-27-11 D.R.B.

Rev: 02-17-11 D.R.B.

60' 30' 0' 60'

SCALE

Sheet 1hh of 11



SWMP LEGEND:

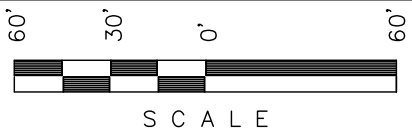
- SedR - SEDIMENT RESERVOIR
SCE - STABILIZED CONSTRUCTION ENTRANCE
SL - SLASH
ST - SEDIMENT TRAP
W - WATTLE

LEGEND:

- ST - Septic Tank
PD - Power Distributor

Encana OIL & GAS (USA) INC.

WELL PAD INTERFERENCE PLAT
WELL PAD B36 496 (AS-BUILT)
SECTION 36, T4S, R96W, 6th P.M.
LOT 2

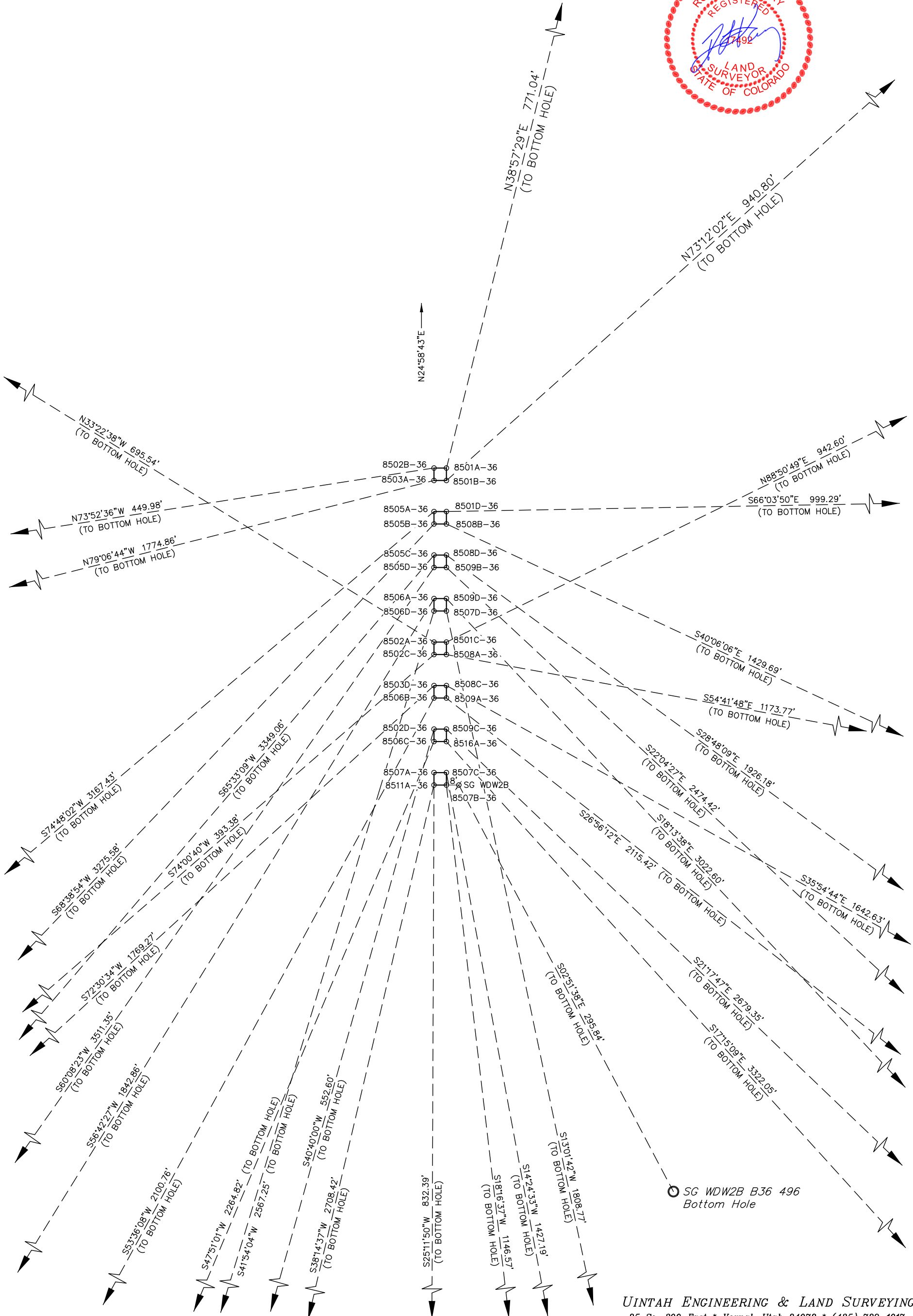


S C A L E

Sheet 2 of 11



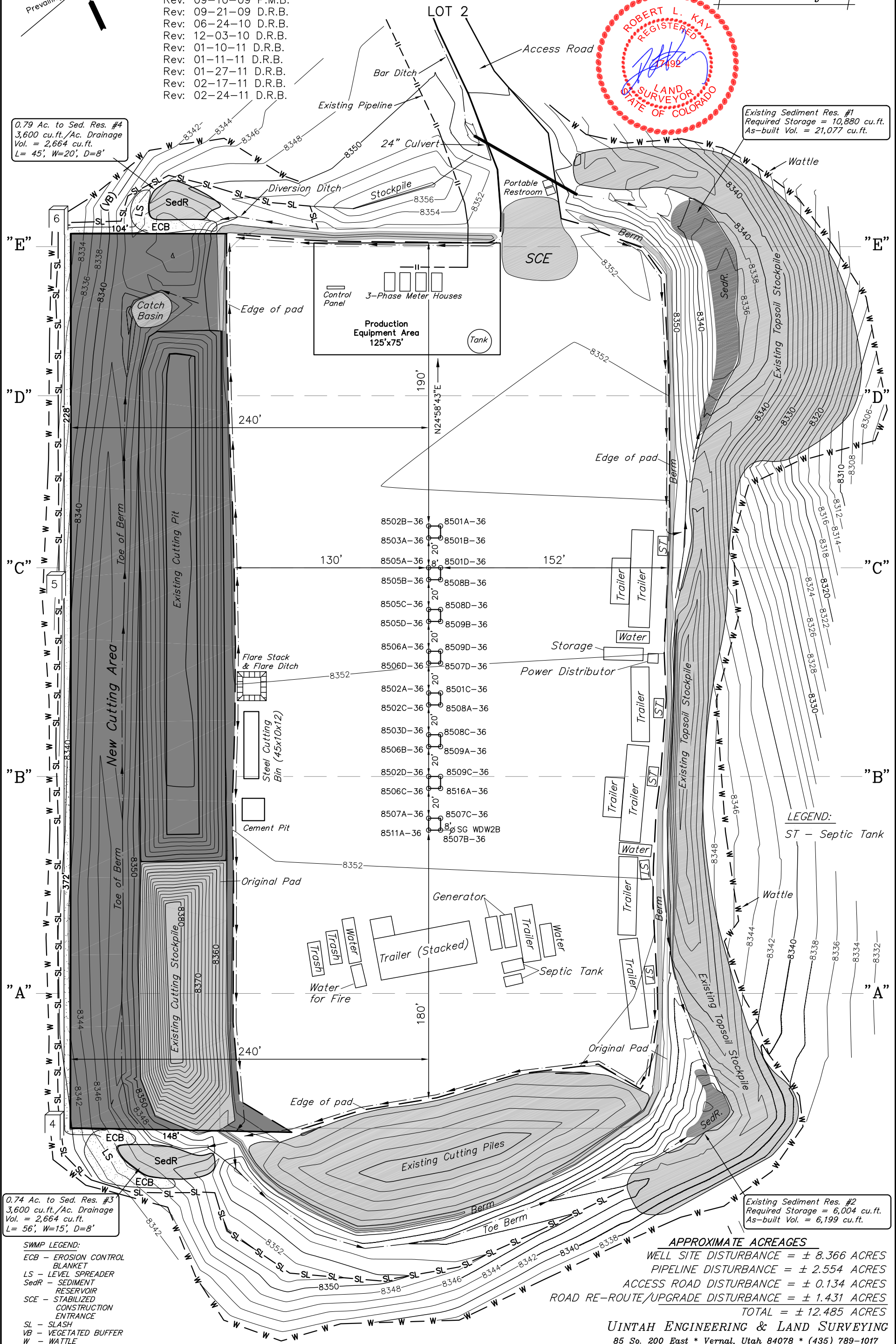
SCALE: 1" = 60'
DATE: 08-31-09
Drawn By: D.R.B.
Rev: 06-24-10 D.R.B.
Rev: 01-11-11 D.R.B.
Rev: 01-27-11 D.R.B.
Rev: 02-17-11 D.R.B.



SCALE
/Sheet 3 of 11/

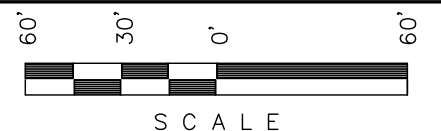
Rev: 08-17-09 D.R.B.
Rev: 08-31-09 D.R.B.
Rev: 09-10-09 P.M.B.
Rev: 09-21-09 D.R.B.
Rev: 06-24-10 D.R.B.
Rev: 12-03-10 D.R.B.
Rev: 01-10-11 D.R.B.
Rev: 01-11-11 D.R.B.
Rev: 01-27-11 D.R.B.
Rev: 02-17-11 D.R.B.
Rev: 02-24-11 D.R.B.

Existing Sediment Res. #1
Required Storage = 10,880 cu.ft.
As-built Vol. = 21,077 cu.ft.

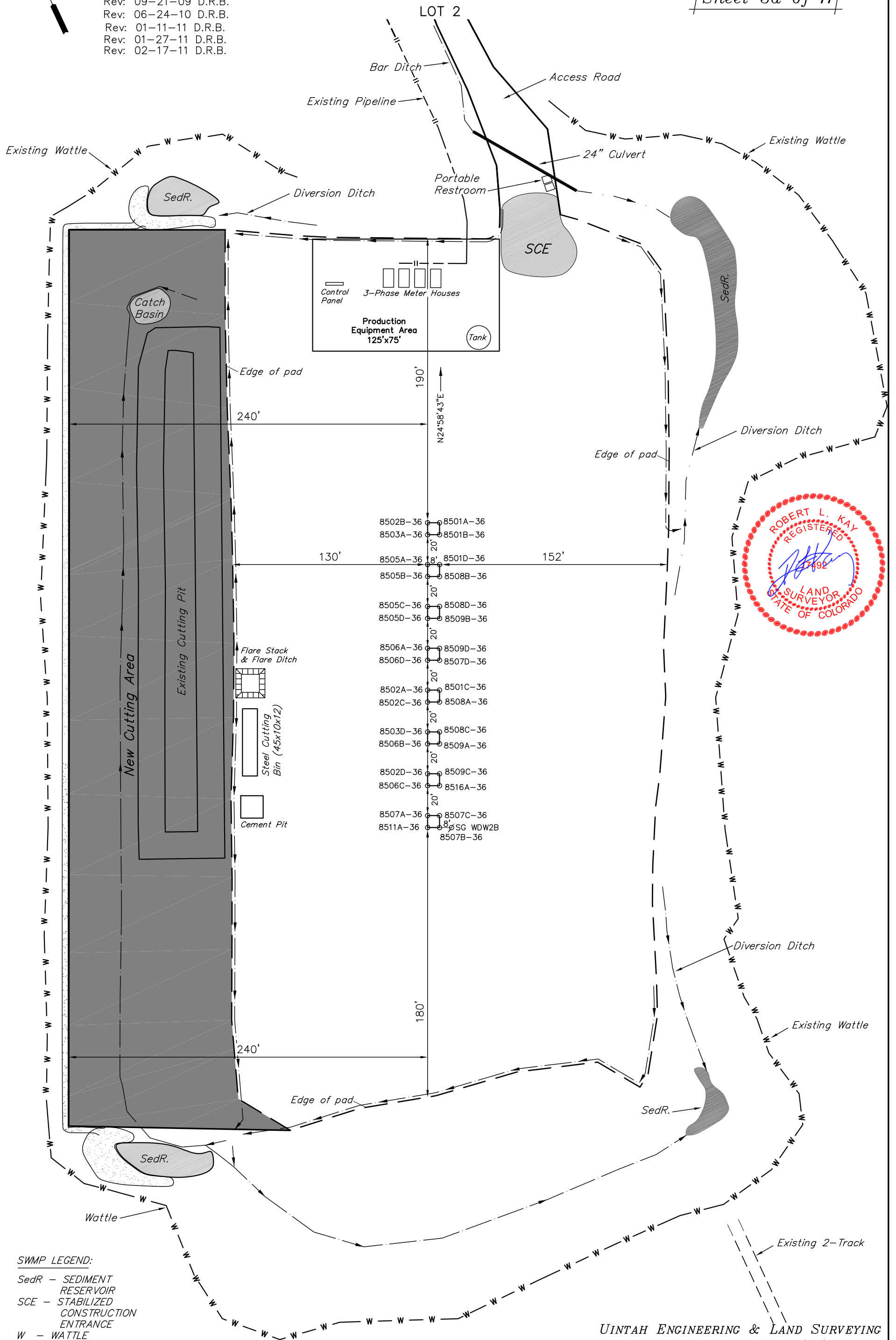


UNTAH ENGINEERING & LAND SURVEYING
85 So. 200 East * Vernal, Utah 84078 * (435) 789-1017

PRE-CONSTRUCTION LAYOUT FOR
WELL PAD B36 496 (AS-BUILT)
SECTION 36, T4S, R96W, 6th P.M.



Sheet 3a of 11



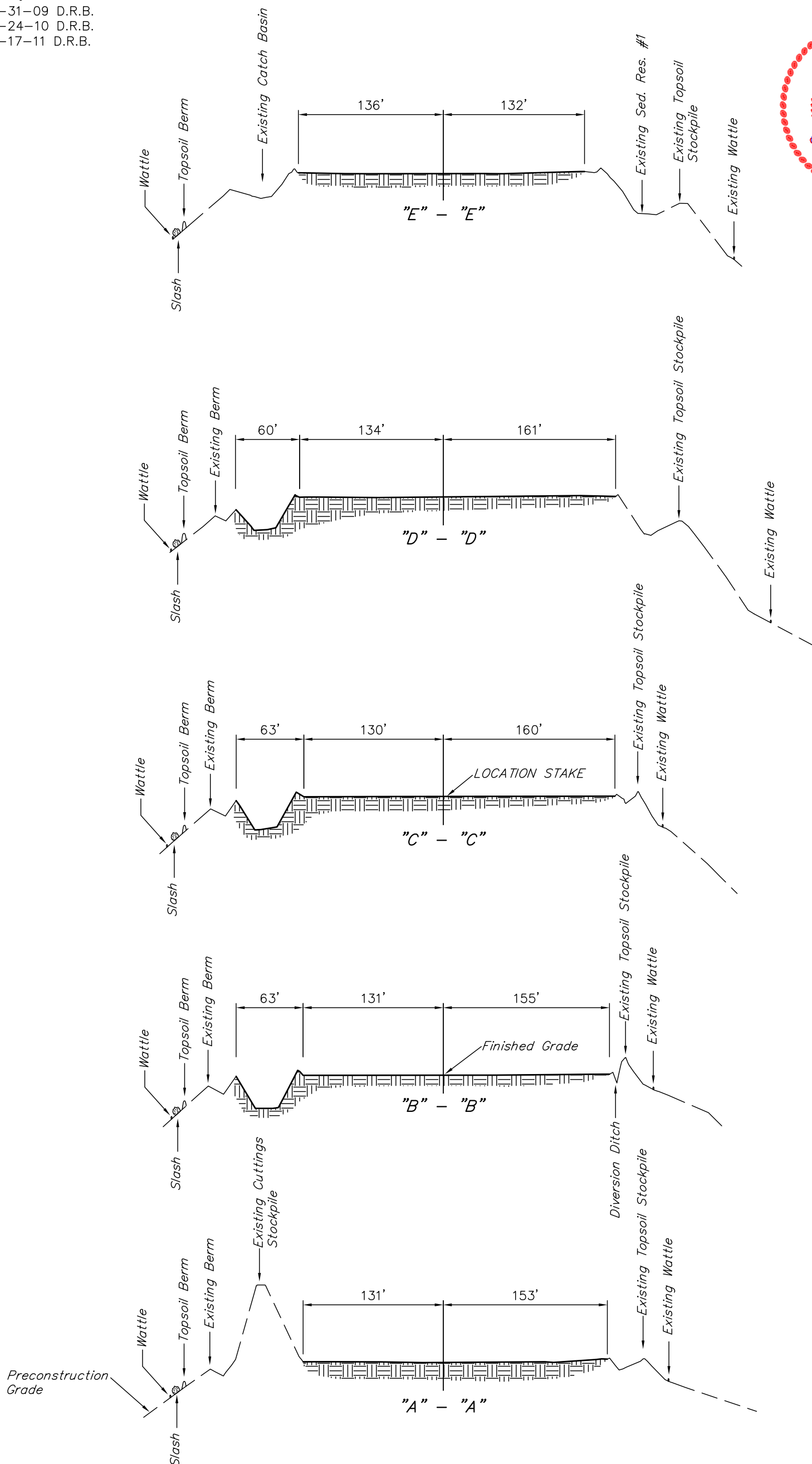
UINTAH ENGINEERING & LAND SURVEYING
85 So. 200 East * Vernal, Utah 84078 * (435) 789-1017

Encana OIL & GAS (USA) INC.
CONSTRUCTION LAYOUT CROSS SECTION FOR
WELL PAD B36 496 (AS-BUILT)
SECTION 36, T4S, R96W, 6th P.M.
LOT 2

Sheet 4 of 11

1" = 40'
X-Section
Scale
1" = 100'

DATE: 08-03-09
Drawn By: D.R.B.
Rev: 08-31-09 D.R.B.
Rev: 06-24-10 D.R.B.
Rev: 02-17-11 D.R.B.

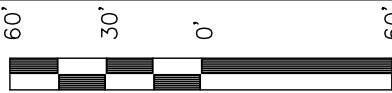




SCALE: 1" = 60'
DATE: 08-03-09
Drawn By: D.R.B.
Rev: 08-17-09 D.R.B.
Rev: 08-31-09 D.R.B.
Rev: 09-21-09 D.R.B.
Rev: 06-24-10 D.R.B.
Rev: 01-11-11 D.R.B.
Rev: 01-27-11 D.R.B.
Rev: 02-17-11 D.R.B.

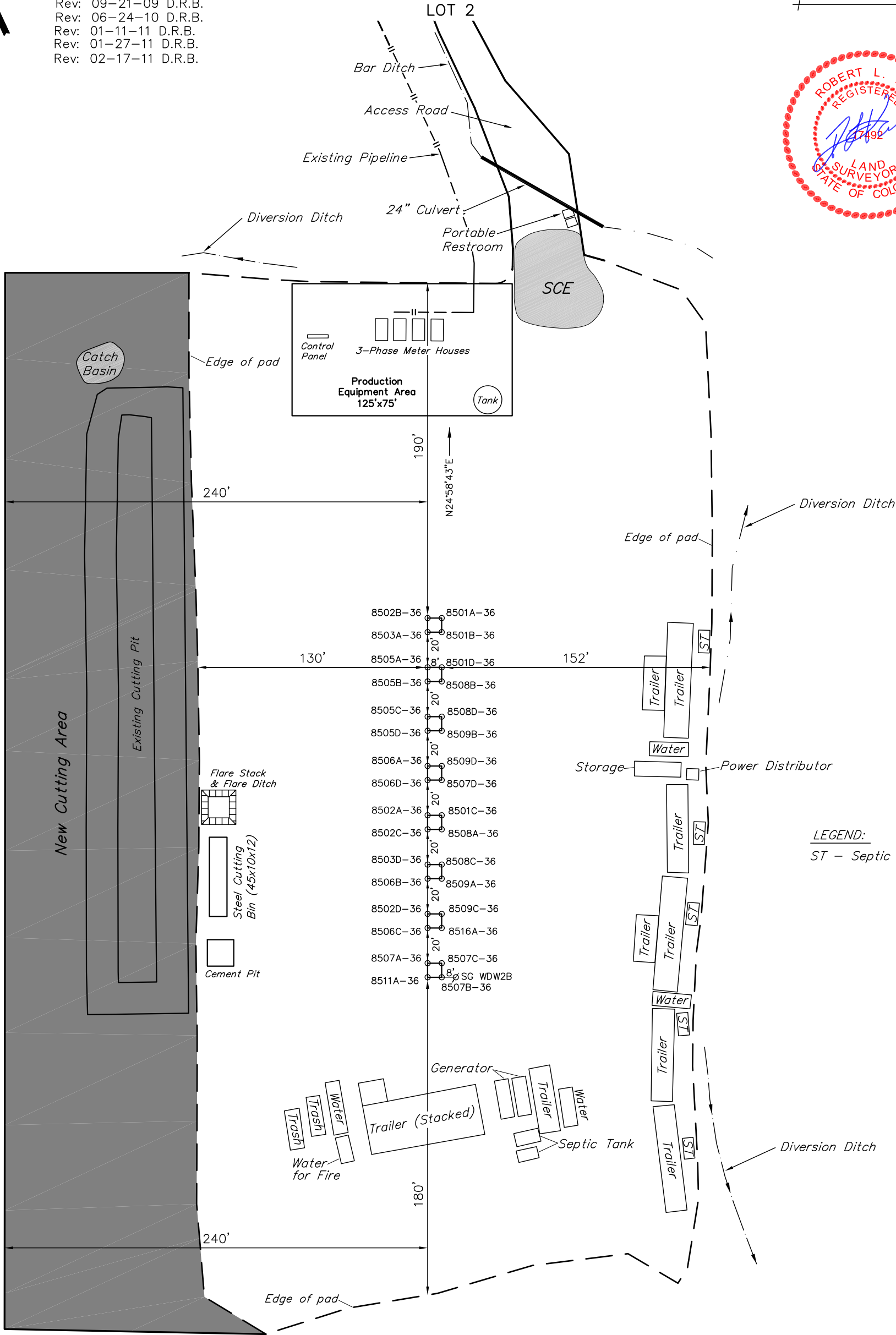
Encana OIL & GAS (USA) INC.

TYPICAL RIG LAYOUT FOR
WELL PAD B36 496 (AS-BUILT)
SECTION 36, T4S, R96W, 6th P.M.



S C A L E

Sheet 5 of 11



SWMP LEGEND:

SedR - SEDIMENT
RESERVOIR
SCE - STABILIZED
CONSTRUCTION
ENTRANCE

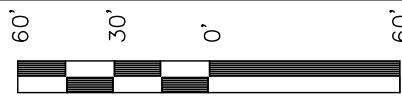
Existing 2-Track

SCALE: 1" = 60'
DATE: 08-03-09
Drawn By: D.R.B.

Rev: 08-17-09 D.R.B.
Rev: 08-31-09 D.R.B.
Rev: 09-21-09 D.R.B.
Rev: 09-29-09 D.R.B.
Rev: 06-24-10 D.R.B.
Rev: 01-11-11 D.R.B.
Rev: 01-27-11 D.R.B.
Rev: 02-17-11 D.R.B.

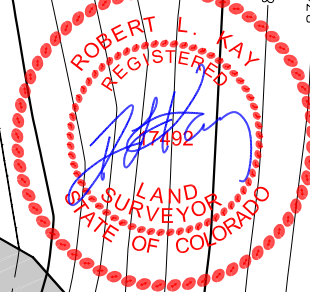
EnCana OIL & GAS (USA) INC.

PRODUCTION SCHEMATIC FOR WELL PAD B36 496 (AS-BUILT) SECTION 36, T4S, R96W, 6th P.M. LOT 2



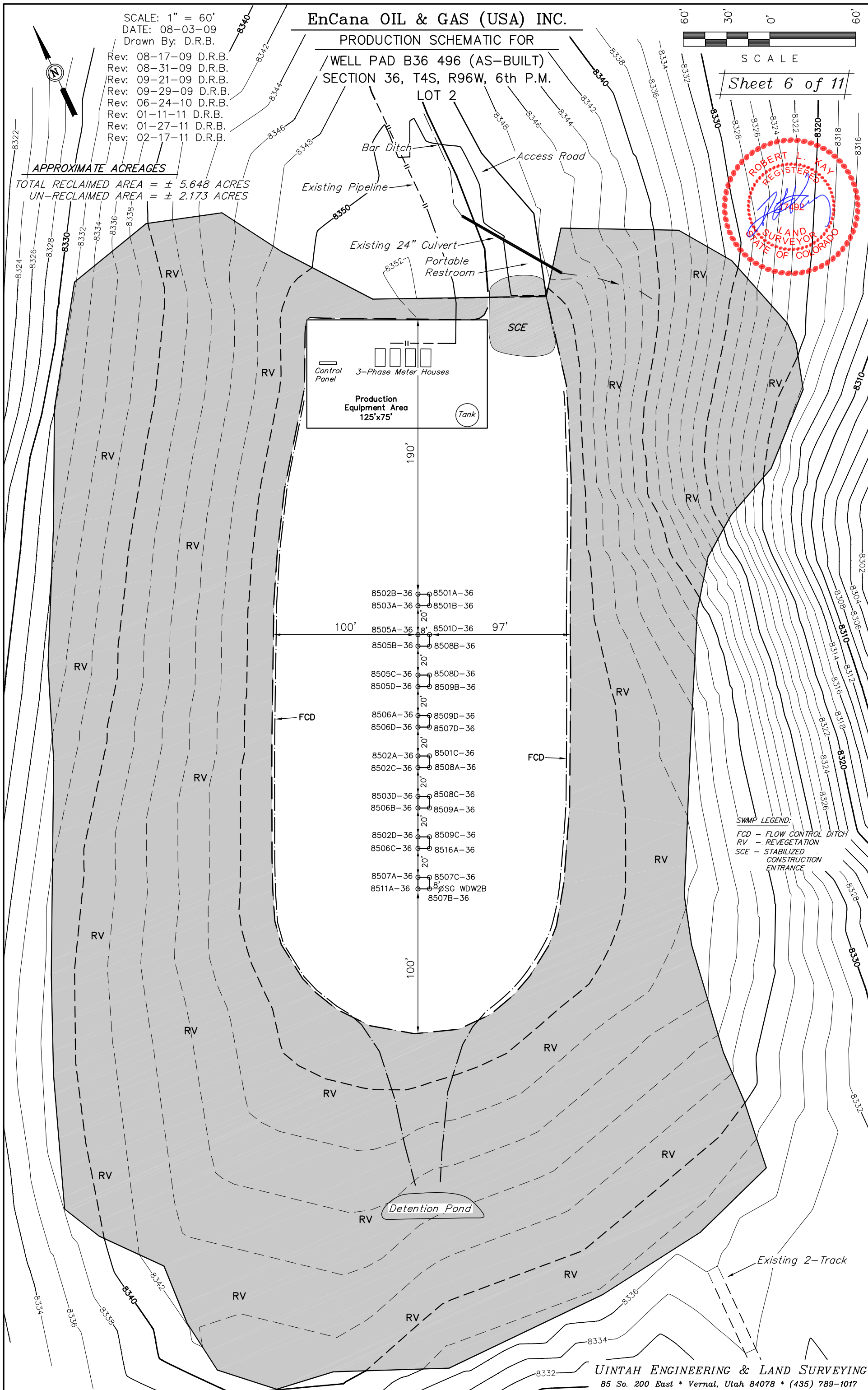
SCALE

Sheet 6 of 11



APPROXIMATE ACREAGES

TOTAL RECLAIMED AREA = ± 5.648 ACRES
UN-RECLAIMED AREA = ± 2.173 ACRES



Drawn By: D.R.B.

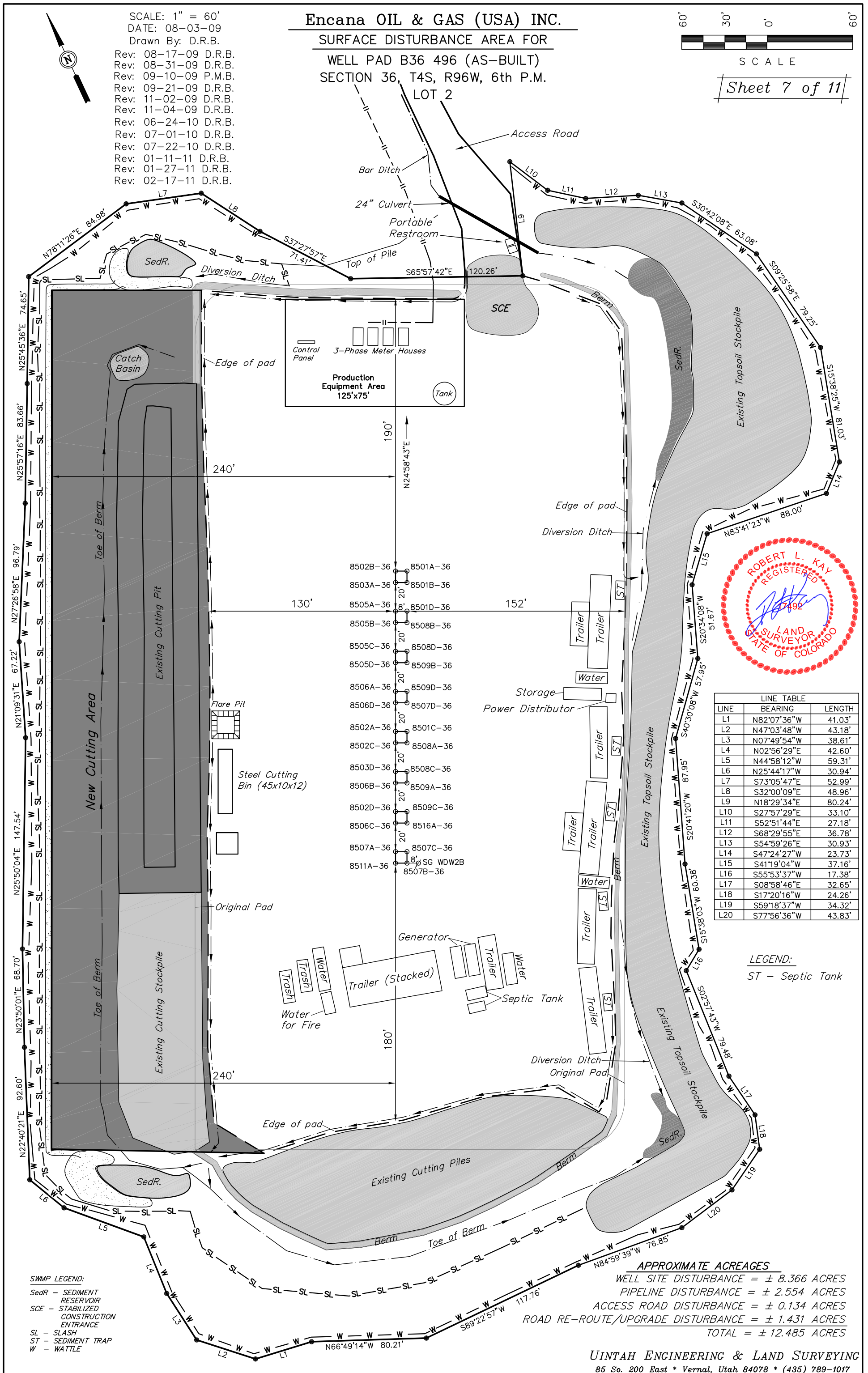
Rev: 08-17-09 D.R.B.
Rev: 08-31-09 D.R.B.
Rev: 09-10-09 P.M.B.
Rev: 09-21-09 D.R.B.
Rev: 11-02-09 D.R.B.
Rev: 11-04-09 D.R.B.
Rev: 06-24-10 D.R.B.
Rev: 07-01-10 D.R.B.
Rev: 07-22-10 D.R.B.
Rev: 01-11-11 D.R.B.
Rev: 01-27-11 D.R.B.
Rev: 02-17-11 D.R.B.

SURFACE DISTURBANCE AREA FOR

WELL PAD B36 496 (AS-BUILT)
SECTION 36, T4S, R96W, 6th P.M.
LOT 2



Sheet 7 of 11



LINE TABLE		
LINE	BEARING	LENGTH
L1	N82°07'36"W	41.03'
L2	N47°03'48"W	43.18'
L3	N07°49'54"W	38.61'
L4	N02°56'29"E	42.60'
L5	N44°58'12"W	59.31'
L6	N25°44'17"W	30.94'
L7	S73°05'47"E	52.99'
L8	S32°00'09"E	48.96'
L9	N18°29'34"E	80.24'
L10	S27°57'29"E	33.10'
L11	S52°51'44"E	27.18'
L12	S68°29'55"E	36.78'
L13	S54°59'26"E	30.93'
L14	S47°24'27"W	23.73'
L15	S41°19'04"W	37.16'
L16	S55°53'37"W	17.38'
L17	S08°58'46"E	32.65'
L18	S17°20'16"W	24.26'
L19	S59°18'37"W	34.32'
L20	S77°56'36"W	43.83'

ST – *Septic Tank*

SWMP LEGEND:

SedR - SEDIMENT
RESERVOIR

SCE - STABILIZED
CONSTRUCTION
ENTRANCE

SL - SLASH

ST - SEDIMENT TRAP

W - WATTLE

APPROXIMATE ACREAGES

WELL SITE DISTURBANCE = ± 8.366 ACRES

PIPELINE DISTURBANCE = ± 2.554 ACRES

ACCESS ROAD DISTURBANCE = ± 0.134 ACRES

ROAD RE-ROUTE/UPGRADE DISTURBANCE = ± 1.431 ACRES

TOTAL = ± 12.485 ACRES

UINTAH ENGINEERING & LAND SURVEYING
85 So. 200 East * Vernal, Utah 84078 * (435) 789-1017