

BAKER HUGHES



Baker Atlas

FILE NO: _____ COMPANY: **KINDER MORGAN**
 API NO: _____ WELL: **SAND CANYON #8**
 FIELD: **MCELMO DOME**
 COUNTY: **MONTEZUMA** STATE: **COLORADO**

Ver. 3.87 LOCATION: **SITE: Z712' PML & 1803' FSL**

SEC **7** TRIP **30N** RGE **18W**

OTHER SERVICES
RTBX/ML/GR
ZDL/CN/GR

PERMANENT DATUM **G.L.** ELEVATION **6397 FT**
 LOG MEASURED FROM **K.B.** **19.5 FT** ABOVE P.D.
 DRILL MEAS. FROM **KELLY BUSHING**

ELEVATIONS:
KB **6416.5 FT**
DF **6415.5 FT**
OL **6397.0 FT**

DATE	22-AUG-2010
RUN	1
SERVICE ORDER	576762
DEPTH DRILLER	7942 FT
DEPTH LOGGER	7942 FT
BOTTOM LOGGED INTERVAL	7942 FT
TOP LOGGED INTERVAL	7500 FT
CASING DRILLER	7.625 IN
CASING LOGGER	7794 FT
BIT SIZE	8.5 IN
TYPE OF FLUID IN HOLE	WATER
DENSITY	N/A
PH	N/A
SOURCE OF SAMPLE	N/A
RM AT MEAS. TEMP.	N/A
RMF AT MEAS. TEMP.	N/A
RMC AT MEAS. TEMP.	N/A
SOURCE OF RMF	N/A
RM AT BHT	1.949 CH/M
TIME SINCE CIRCULATION	8 HOURS
MAX. RECORDED TEMP.	128 DEGF
EQUIP. NO.	HL-6741
RECORDED BY	DONALDSON
WITNESSED BY	KONERAY

IN MAKING INTERPRETATIONS OF LOGS OUR EMPLOYEES WILL GIVE CUSTOMER THE BENEFIT OF THEIR BEST JUDGEMENT. BUT SINCE ALL INTERPRETATIONS ARE OPINIONS BASED ON INFERENCES FROM ELECTRICAL OR OTHER MEASUREMENTS, WE CANNOT, AND WE DO NOT GUARANTEE THE ACCURACY OR CORRECTNESS OF ANY INTERPRETATION. WE SHALL NOT BE LIABLE OR RESPONSIBLE FOR ANY LOSS, COST, DAMAGES, OR EXPENSES WHATSOEVER INCURRED OR SUSTAINED BY THE CUSTOMER RESULTING FROM ANY INTERPRETATION MADE BY ANY OF OUR EMPLOYEES.

BOREHOLE RECORD

BIT SIZE	FROM	TO
8.5 IN	7761 FT	7942 FT

CASING RECORD

SIZE	WEIGHT	GRADE	FROM	TO
7.625 IN	28 LB/F	K-55	0 FT	4000 FT

REMARKS

- RUN 1 TRIP 1:
- * ZDL MATRIX: 2.71
 - * CN MATRIX: LIMESTONE
 - * NO RMF OR RMC DUE THE FACT WELL FILLED WITH FRESH WATER
 - * LOG CORRELATED TO SCHLUMBERGER OPEN HOLE LOG 30-NOV-1990
 - * CREW: MCCORMICK/COATE
 - * THANK YOU FOR CHOOSING BAKER ATLAS

EQUIPMENT DATA

RUN	TRIP	TOOL	SERIES NO.	SERIAL NO.	POSITION
1	1	TIRM	3081XA	10475109	FREE
1	1	TELEMETRY	3514XB	10340806	FREE
1	1	GR	1320XA	10338529	FREE
1	1	ISO	4485XA	10475109	FREE
1	1	CRIT	4401XA	10318249	FREE
1	1	RT EXPLORER	1241XA	10558713	FREE
1	1	MILL	1243XA	11588854	PAD DEVICE
1	1	ISO	4485XA	10475110	FREE

MAIN LOG 2"/100FT SCALE

ECLIPS 6.01 Feb 21, 2008
Updates: 1,39,40 Patches: 1,2,4,5,6

Mon Aug 23 01:49:02 2010

Perplft /main/62

Cplot

Pdf_Cpp /main/16

Fileview 5.42

PARAMETER AND FILTER SUMMARY REPORT

FILE: /data/576762/k870aEG02.prm
LOGGING MODE: DEPTH DIRECTION: UP
TOP DEPTH: 7428.500 ft BOTTOM DEPTH: 7962.574 ft

SYMMETRIC FILTER

MEASUREMENT TYPE	PARAMETER	VALUE	UNITS	INTERVAL (ft)	
GR MED RES	FILTER ()	medium (1)		TOP	BOTTOM
CALIPER	FILTER ()	medium (1)		"	"
TENSION	FILTER ()	medium (1)		"	"

BOREHOLE & CEMENT

MEASUREMENT TYPE	PARAMETER	VALUE	UNITS	INTERVAL (ft)	
CASING - BOREHOLE & CEMENT VOLUME	CASING O.D.	0.000	1n	TOP	BOTTOM
BIT SIZE	BIT SIZE	8.500	1n	"	"

ACCELERATION PROCESSING

MEASUREMENT TYPE	PARAMETER	VALUE	UNITS	INTERVAL (ft)	
ACCEL CORR SWITCH	ACCEL DEPTH CORR	CORRECTION ON		TOP	BOTTOM

PARAMETER AND FILTER SUMMARY REPORT

FILE: /data/576762/k870aEG04.prm
LOGGING MODE: DEPTH DIRECTION: UP
TOP DEPTH: 7515.332 ft BOTTOM DEPTH: 7968.711 ft

SYMMETRIC FILTER

MEASUREMENT TYPE	PARAMETER	VALUE	UNITS	INTERVAL (ft)	
GR MED RES	FILTER ()	medium (1)		TOP	BOTTOM
CALIPER	FILTER ()	medium (1)		"	"
TENSION	FILTER ()	medium (1)		"	"

BOREHOLE & CEMENT

MEASUREMENT TYPE	PARAMETER	VALUE	UNITS	INTERVAL (ft)	
CASING - BOREHOLE & CEMENT VOLUME	CASING O.D.	0.000	1n	TOP	BOTTOM
BIT SIZE	BIT SIZE	8.500	1n	"	"

ACCELERATION PROCESSING

MEASUREMENT TYPE	PARAMETER	VALUE	UNITS	INTERVAL (ft)	
------------------	-----------	-------	-------	---------------	--

MEASUREMENT TYPE	PARAMETER	UNITS	INTERVAL (ft)
ACCEL CORR SWITCH	ACCEL DEPTH CORR	CORRECTION ON	TOP BOTTOM

CURVE DESCRIPTION REPORT

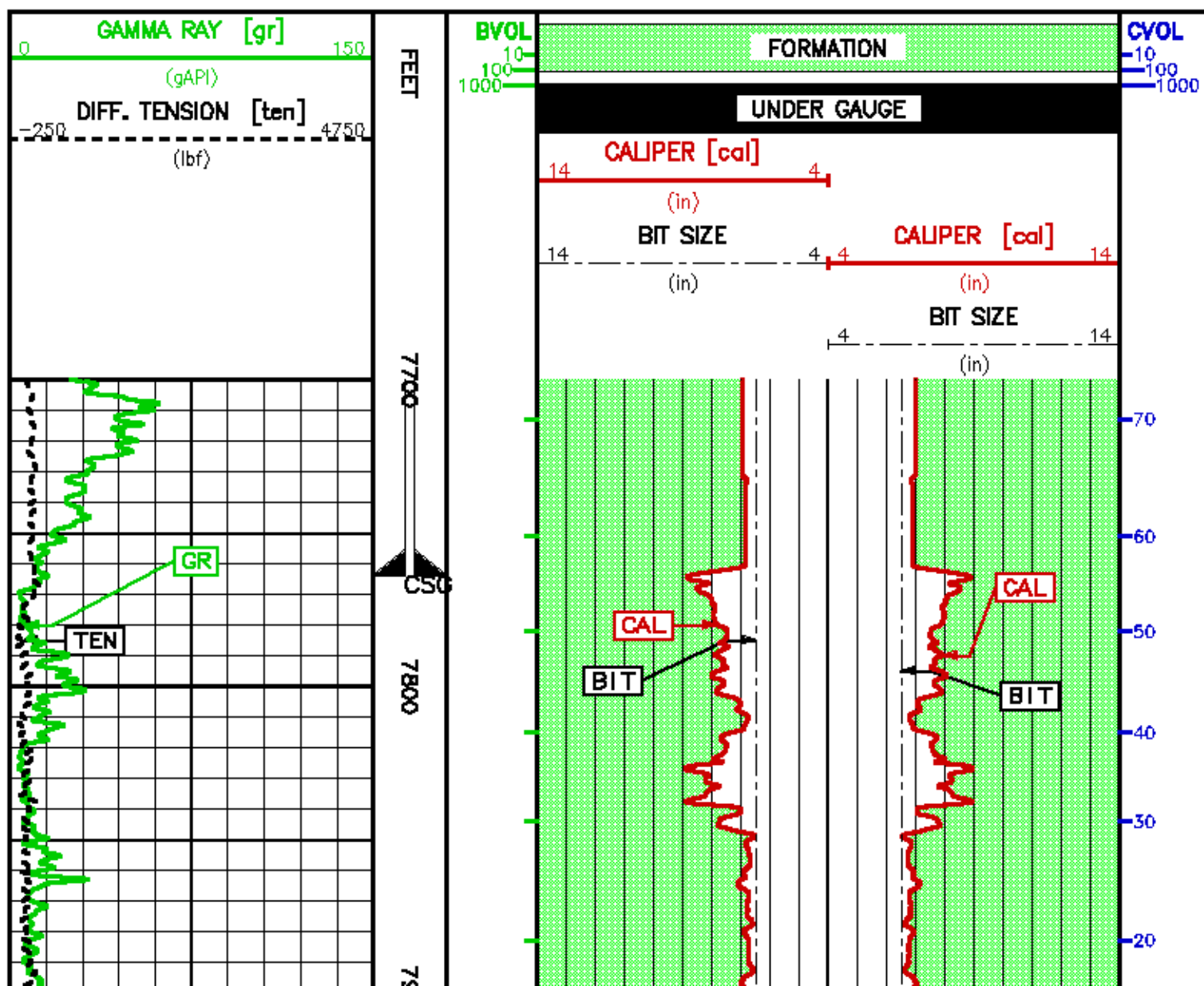
CURVE NAME	CURVE ALIAS	CREATION DATE	CURVE DESCRIPTION
F1:BIT	BIT	Aug 22 22:58:33 2010	BIT SIZE
F1:BVOL	BVOL	Aug 22 22:58:33 2010	BOREHOLE VOLUME
F1:CAL	CAL	Aug 22 22:58:33 2010	CALIPER
F1:CVOL	CVOL	Aug 22 22:58:33 2010	CEMENT VOLUME
F1:GR	GR	Aug 22 22:58:33 2010	GAMMA RAY
F1:TEN	TEN	Aug 22 22:58:33 2010	DIFFERENTIAL TENSION

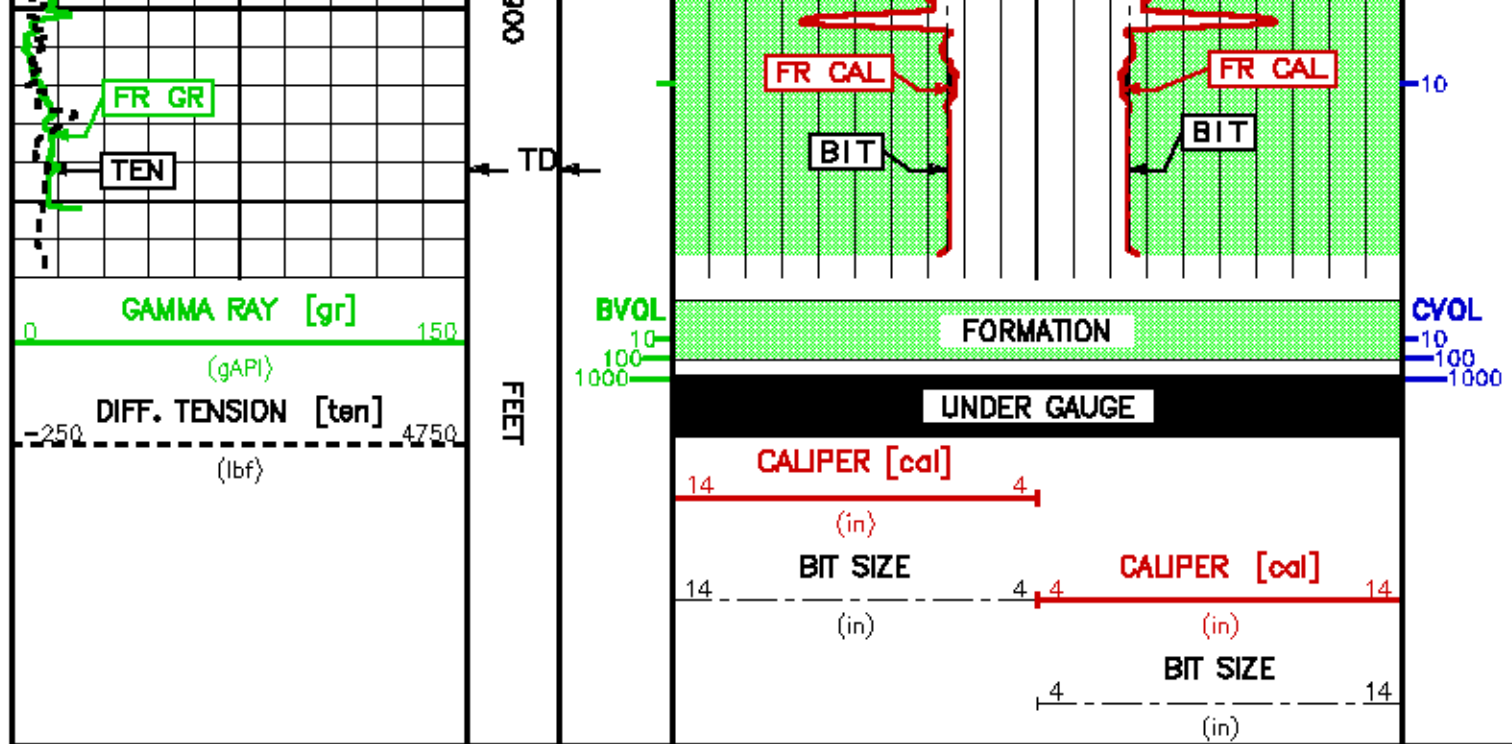
CURVE MEASURE POINT OFFSET



CURVE	OFFSET (ft)	CURVE	OFFSET (ft)	CURVE	OFFSET (ft)	CURVE	OFFSET (ft)
BIT	0.00	CAL	20.75	GR	9.00	TEN	0.00

Presentation : mfg1:/data/578762/blk10a.pdf [2"/100' Scale]
Plot Interval : 7700 - 7987.75 Feet

Data File 1 : F1 : mfg1:/data/578762/k970aEQ02_CN_MM.xtf
Created On : Aug 22 22:58:33 2010
Company : KINDER MORGAN
Well : SAND CANYON JB
Field : MCLEMO DOME
File Interval : 0 - 7989 Feet
Dot : k970aEQ





 Baker Atlas 	COMPANY <u>KINDER MORGAN</u> WELL <u>SAND CANYON #8</u> FIELD <u>MCCELMO DOME</u> COUNTY <u>MONTEZUMA</u> STATE <u>COLORADO</u>	FILE NO: _____ API NO: <u>05083852700000</u>
	LOCATION: <u>SHL: 2712' FHL & 1803' FSL</u> SEC <u>7</u> TWP <u>36N</u> RGE <u>18W</u>	ELEVATIONS: KB 8418.5 FT DF 8415.5 FT GL 8397.0 FT DATE <u>22-AUG-2010</u>