

The Road to Excellence Starts with Safety

Sold To #: 320986	Ship To #: 320986	Quote #:	Sales Order #: 7566401
Customer: KINDER MORGAN INC		Customer Rep:	
Well Name: MC	Well #: #5	API/UWI #:	
Field:	City (SAP): HOUSTON	County/Parish: Montezuma	State: Colorado
Contractor: AZTEC WELL SERVICE	Rig/Platform Name/Num: AWS 580		
Job Purpose: Plug Service - Whipstock			
Well Type: Producing Well		Job Type: Plug Service - Whipstock	
Sales Person: SNYDER, RANDALL	Srvc Supervisor: ARNOLD, EDWARD	MBU ID Emp #: 439784	

Job Personnel

HES Emp Name	Exp Hrs	Emp #	HES Emp Name	Exp Hrs	Emp #	HES Emp Name	Exp Hrs	Emp #
ARNOLD, EDWARD John	7.5	439784	GAMBLE, BENJAMIN T	7.5	446666	TYLER, LUTHER	7.5	375283

Equipment

HES Unit #	Distance-1 way	HES Unit #	Distance-1 way	HES Unit #	Distance-1 way	HES Unit #	Distance-1 way
10025104	110 mile	10811442	110 mile	10871245	110 mile	10897805	110 mile
11360881	110 mile						

Job Hours

Date	On Location Hours	Operating Hours	Date	On Location Hours	Operating Hours	Date	On Location Hours	Operating Hours
8/13/2010	7.5	4.5						
TOTAL			Total is the sum of each column separately					

Job

Job Times

Formation Name	Formation Depth (MD)	Top	Bottom	Called Out	Date	Time	Time Zone
Form Type			BHST	On Location	13 - Aug - 2010	09:30	MST
Job depth MD	8277. ft		Job Depth TVD	Job Started	13 - Aug - 2010	13:27	MST
Water Depth			Wk Ht Above Floor	Job Completed	13 - Aug - 2010	14:31	MST
Perforation Depth (MD)	From		To	Departed Loc	13 - Aug - 2010	17:00	MST

Well Data

Description	New / Used	Max pressure psig	Size in	ID in	Weight lbm/ft	Thread	Grade	Top MD ft	Bottom MD ft	Top TVD ft	Bottom TVD ft
Open Hole				6.5				8047.	8277.		
Production Casing	Unknown		7.625	6.765	33.7				8047.		
Drill Pipe	Unknown		2.875	2.151	10.4				8277.		

Sales/Rental/3rd Party (HES)

Description	Qty	Qty uom	Depth	Supplier
SUGAR, GRANULATED, IMPERIAL	100	LB		

Tools and Accessories

Type	Size	Qty	Make	Depth	Type	Size	Qty	Make	Depth	Type	Size	Qty	Make
Guide Shoe					Packer					Top Plug			
Float Shoe					Bridge Plug					Bottom Plug			
Float Collar					Retainer					SSR plug set			
Insert Float										Plug Container			
Stage Tool										Centralizers			

Miscellaneous Materials

Gelling Agt	Conc	Surfactant	Conc	Acid Type	Qty	Conc	%
Treatment Fld	Conc	Inhibitor	Conc	Sand Type	Size	Qty	

Fluid Data

Sold To #: 320986 Ship To #: 320986 Quote #: Sales Order #: 7566401

Stage/Plug #: 1									
Fluid #	Stage Type	Fluid Name	Qty	Qty uom	Mixing Density lbm/gal	Yield ft ³ /sk	Mix Fluid Gal/sk	Rate bbl/min	Total Mix Fluid Gal/sk
1	Fresh Water		100.00	bbl	8.33	.0	.0	5	
2	Cement	CMT - PREMIUM - CLASS G, 94 LB SK (100003685)	135.0	sacks	16.5	1.06	4.23	4	4.23
	94 lbm	CMT - PREMIUM - CLASS G REG OR TYPE V, BULK (100003685)							
	3 %	POTASSIUM CHLORIDE 7% (100001585)							
	0.8 %	HR-5, 50 LB SK (100005050)							
	0.125 lbm	POLY-E-FLAKE (101216940)							
	4.228 Gal	FRESH WATER							
Calculated Values		Pressures		Volumes					
Displacement	35.2	Shut In: Instant		Lost Returns		Cement Slurry	25.5	Pad	
Top Of Cement	7633.6	5 Min		Cement Returns		Actual Displacement	35.2	Treatment	
Frac Gradient		15 Min		Spacers	100	Load and Breakdown		Total Job	160.7
Rates									
Circulating		Mixing		Displacement		Avg. Job			
Cement Left In Pipe	Amount	0 ft	Reason	Shoe Joint					
Frac Ring # 1 @	ID	Frac ring # 2 @	ID	Frac Ring # 3 @	ID	Frac Ring # 4 @	ID		
The Information Stated Herein Is Correct				Customer Representative Signature					

The Road to Excellence Starts with Safety

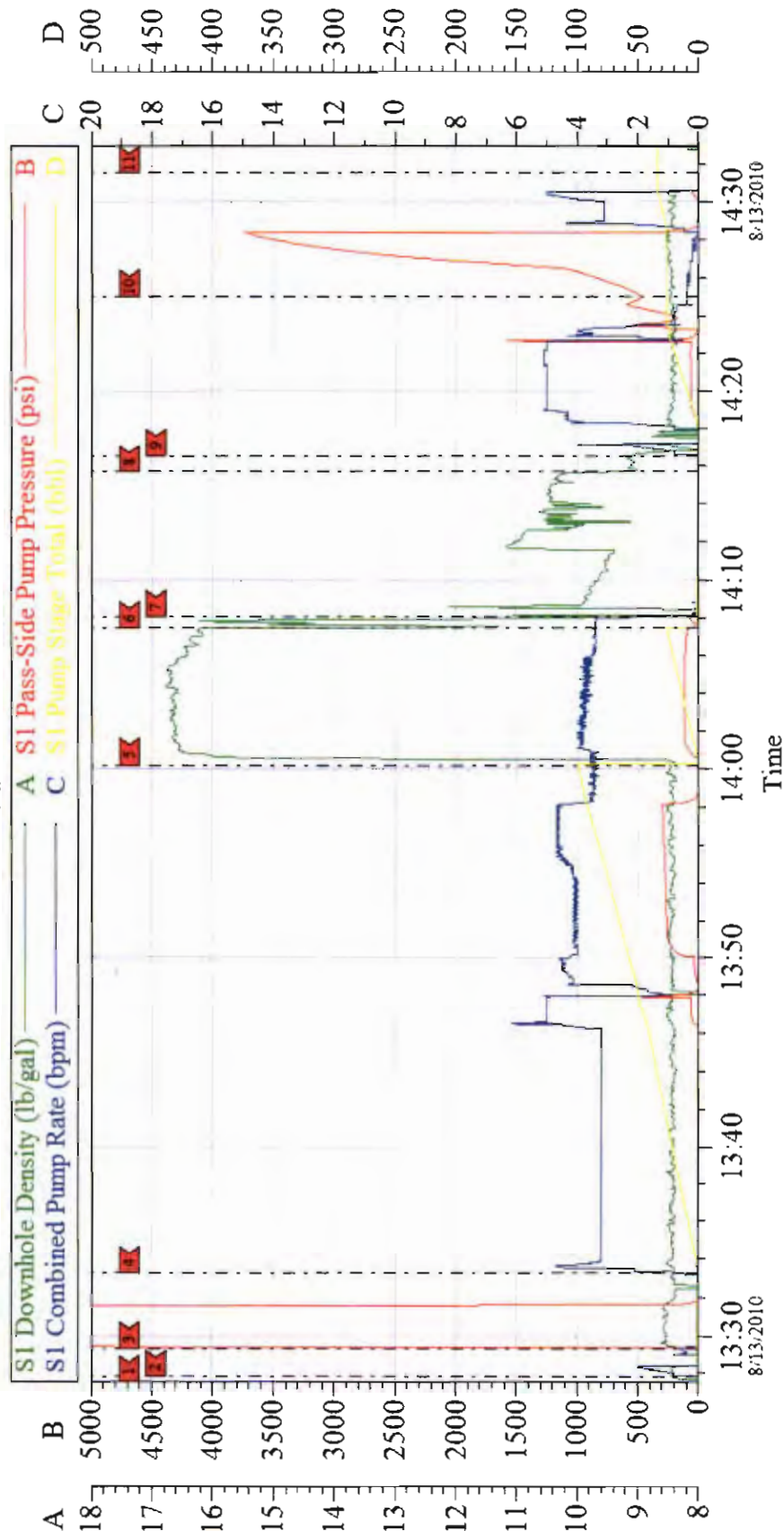
Sold To #: 320986		Ship To #: 320986		Quote #:		Sales Order #: 7566401	
Customer: KINDER MORGAN INC				Customer Rep:			
Well Name: MC			Well #: #5		API/UWI #:		
Field:		City (SAP): HOUSTON		County/Parish: Montezuma		State: Colorado	
Legal Description:							
Lat: N 0 deg. OR N 0 deg. 0 min. 0 secs.				Long: E 0 deg. OR E 0 deg. 0 min. 0 secs.			
Contractor: AZTEC WELL SERVICE			Rig/Platform Name/Num: AWS 580				
Job Purpose: Plug Service - Whipstock					Ticket Amount:		
Well Type: Producing Well			Job Type: Plug Service - Whipstock				
Sales Person: SNYDER, RANDALL			Srv Supervisor: ARNOLD, EDWARD			MBU ID Emp #: 439784	

Activity Description	Date/Time	Cht #	Rate bbl/min	Volume bbl		Pressure psig		Comments
				Stage	Total	Tubing	Casing	
Call Out	08/13/2010 05:00							
Pre-Convoy Safety Meeting	08/13/2010 06:15							Including entire cement crew
Crew Leave Yard	08/13/2010 06:30							
Arrive At Loc	08/13/2010 09:30							Rig still running in with pipe
Assessment Of Location Safety Meeting	08/13/2010 09:45							Water Test: Ph ;KCL ;S04 ;Fe ;Chlorides ;Calcium ;Temp ;TDS .
Pre-Rig Up Safety Meeting	08/13/2010 12:00							Including entire cement crew
Rig-Up Equipment	08/13/2010 12:05							1 Elite #; 1 660 bulk truck; 1 hard line from pump to floor; 1 line to Rig tank.
Rig-Up Completed	08/13/2010 12:55							
Pre-Job Safety Meeting	08/13/2010 13:00							Including everyone on location
Start Job	08/13/2010 13:27							TD8277;TP 7852' 2.875" 10.4# Drill pipe, 407' 2.875" fiberglass plug pipe to be left in hole; OH 6.5 " 8047-8277; CASING 7.625 33.7# J-55 set at 8047"; TRT set at 7852'. Fresh water well fluid.
Other	08/13/2010 13:28		2	1			.0	Fill lines with fresh water.
Pressure Test	08/13/2010 13:29						5000.0	PSI test good, no leaks.
Pump Spacer 1	08/13/2010 13:33		5	100				100 BBL fresh water.

Cementing Job Log

Activity Description	Date/Time	Cht #	Rate bbl/min	Volume bbl		Pressure psig		Comments
				Stage	Total	Tubing	Casing	
Pump Cement	08/13/2010 14:00		3.7	25.5			120.0	135 SKs Plug cement, 16.5 ppg; 1.06 cf3; 4.23 gal/sk.
Pump Water	08/13/2010 14:07		1	1			120.0	1 BBI behind
Shutdown	08/13/2010 14:08							
Drop Ball	08/13/2010 14:15							Drop Ball (foam & Steel)
Pump Displacement	08/13/2010 14:16		5	24			1000.0	Fresh Water Displacement
Slow Rate	08/13/2010 14:21		0.5	5			220.0	Slow rate at 24 gone
Release Tool	08/13/2010 14:28		0.2				3031.0	Pressure up to release tool.
Start Out Of Hole	08/13/2010 14:30							Pull Drill Pipe
End Job	08/13/2010 14:31							
Pre-Rig Down Safety Meeting	08/13/2010 15:00							Including entire cement crew.
Rig-Down Equipment	08/13/2010 15:15							
Rig-Down Completed	08/13/2010 16:30							
Pre-Convoy Safety Meeting	08/13/2010 16:45							Including entire cement crew.
Depart Location for Service Center or Other Site	08/13/2010 17:00							
Other	08/13/2010 17:00							Thank You for using Halliburton. Ed Arnold and crew.

KINDER MORGAN WHIPP STOCK PLUG MC #5



Local Event Log			
START JOB	13:27:32	FILL LINES	13:27:48
PUMP H2O SPACER	13:33:14	PUMP CEMENT	13:33:14
SHUT DOWN	14:08:05	DROP BALL	14:08:05
PRESSURE UP TO RELEASE TOOL	14:23:01	END JOB	14:31:33
TEST LINES	13:29:19		13:29:19
PUMP H2O BEHIND	14:07:29		14:07:29
PUMP H2O DISPLACEMENT	14:16:53		14:16:53

Customer: Kinder Morgan	Job Date: 13-Aug-2010	Sales Order #: 7566401
Well Description: MC #5	Job Type: Whip Stock Plug	ADC Used: Yes
Company Rep: Jimmy Hale	Cement Supervisor: Ed Arnold	Elite #:3 Tracy Gemble

OptiCem v6.4.8
13-Aug-10 15:19