
NOBLE ENERGY INC E-BUSINESS

**FEDERAL 8-12A
PARACHUTE
Garfield County , Colorado**

Cement Surface Casing
15-Sep-2010

Post Job Report

The Road to Excellence Starts with Safety

Sold To #: 345242	Ship To #: 2804066	Quote #:	Sales Order #: 7609125
Customer: NOBLE ENERGY INC E-BUSINESS	Customer Rep: Nielson, Dave		
Well Name: FEDERAL	Well #: 8-12A	API/UWI #: 05-045-19135	
Field: PARACHUTE	City (SAP): PARACHUTE	County/Parish: Garfield	State: Colorado
Lat: N 39.682 deg. OR N 39 deg. 40 min. 54.048 secs.	Long: W 108.026 deg. OR W -109 deg. 58 min. 25.547 secs.		
Contractor: H&P Drilling	Rig/Platform Name/Num: H&P 322		
Job Purpose: Cement Surface Casing			
Well Type: Development Well	Job Type: Cement Surface Casing		
Sales Person: METLI, MARSHALL	Srv Supervisor: KUKUS, CRAIG	MBU ID Emp #: 369124	

Job Personnel

HES Emp Name	Exp Hrs	Emp #	HES Emp Name	Exp Hrs	Emp #	HES Emp Name	Exp Hrs	Emp #
HAYES, JESSE Doug	4	403601	KUKUS, CRAIG A	4	369124	SIMINEO, JEROD M	4	479954
SLAUGHTER, JESSE Dean	4	454315	TRIPLETT, MICHEAL Anthony	4	447908			

Equipment

HES Unit #	Distance-1 way	HES Unit #	Distance-1 way	HES Unit #	Distance-1 way	HES Unit #	Distance-1 way
10551730C	60 mile	10784064	60 mile	10804487	60 mile	10829469	60 mile
10867094	60 mile	10897925	60 mile	11006314	60 mile		

Job Hours

Date	On Location Hours	Operating Hours	Date	On Location Hours	Operating Hours	Date	On Location Hours	Operating Hours
9/15/2010	4	2						

TOTAL Total is the sum of each column separately

Job

Formation Name	Formation Depth (MD)	Top	Bottom	Form Type	Job depth MD	Water Depth	Perforation Depth (MD)	From	To
				BHST	1540. ft				
					Job Depth TVD	4. ft			
					Wk Ht Above Floor				

Job Times

Date	Time	Time Zone
15 - Sep - 2010	04:30	MST
15 - Sep - 2010	09:00	MST
15 - Sep - 2010	10:28	MST
15 - Sep - 2010	11:38	MST
15 - Sep - 2010	13:00	MST

Well Data

Description	New / Used	Max pressure psig	Size in	ID in	Weight lbm/ft	Thread	Grade	Top MD ft	Bottom MD ft	Top TVD ft	Bottom TVD ft
-------------	------------	-------------------	---------	-------	---------------	--------	-------	-----------	--------------	------------	---------------

Sales/Rental/3rd Party (HES)

Description	Qty	Qty uom	Depth	Supplier
PLUG,CMTG,TOP,8 5/8,HWE,7.20 MIN/8.09 MA	1	EA		
PORT. DAS W/CEMWIN;ACQUIRE W/HES, ZI	1	JOB		
ADC (AUTO DENSITY CTRL) SYS, /JOB,ZI	1	JOB		
R/A DENSOMETER W/CHART RECORDER,/JOB,ZI	1	JOB		

Tools and Accessories

Type	Size	Qty	Make	Depth	Type	Size	Qty	Make	Depth	Type	Size	Qty	Make
Guide Shoe					Packer					Top Plug	8 5/8	1	HES
Float Shoe					Bridge Plug					Bottom Plug			
Float Collar					Retainer					SSR plug set			
Insert Float										Plug Container			
Stage Tool										Centralizers			

Miscellaneous Materials

Gelling Agt	Conc	Surfactant	Conc	Acid Type	Qty	Conc	%
Treatment Fld	Conc	Inhibitor	Conc	Sand Type	Size	Qty	

Fluid Data

Stage/Plug #: 1

Fluid #	Stage Type	Fluid Name	Qty	Qty uom	Mixing Density lbm/gal	Yield ft ³ /sk	Mix Fluid Gal/sk	Rate bbl/min	Total Mix Fluid Gal/sk
1	Water Spacer		20.00	bbl	8.33	.0	.0	.0	
2	VersaCem Lead Cement	VERSACEM (TM) SYSTEM (452010)	226.0	sacks	12.3	2.38	13.75		13.75
	13.75 Gal	FRESH WATER							
3	VersaCem Tail Cement	VERSACEM (TM) SYSTEM (452010)	137.0	sacks	12.8	2.11	11.75		11.75
	11.75 Gal	FRESH WATER							
4	Displacement		94.6	bbl	8.33	.0	.0	.0	
Calculated Values		Pressures		Volumes					
Displacement	94.6	Shut In: Instant		Lost Returns	0	Cement Slurry	150	Pad	
Top Of Cement	SURFACE	5 Min		Cement Returns	20	Actual Displacement	94.6	Treatment	
Frac Gradient		15 Min		Spacers	20	Load and Breakdown		Total Job	262
Rates									
Circulating	6	Mixing	6	Displacement	6	Avg. Job	6		
Cement Left In Pipe	Amount	42.10 ft	Reason	Shoe Joint					
Frac Ring # 1 @	ID	Frac ring # 2 @	ID	Frac Ring # 3 @	ID	Frac Ring # 4 @	ID		
The Information Stated Herein Is Correct				Customer Representative Signature					

The Road to Excellence Starts with Safety

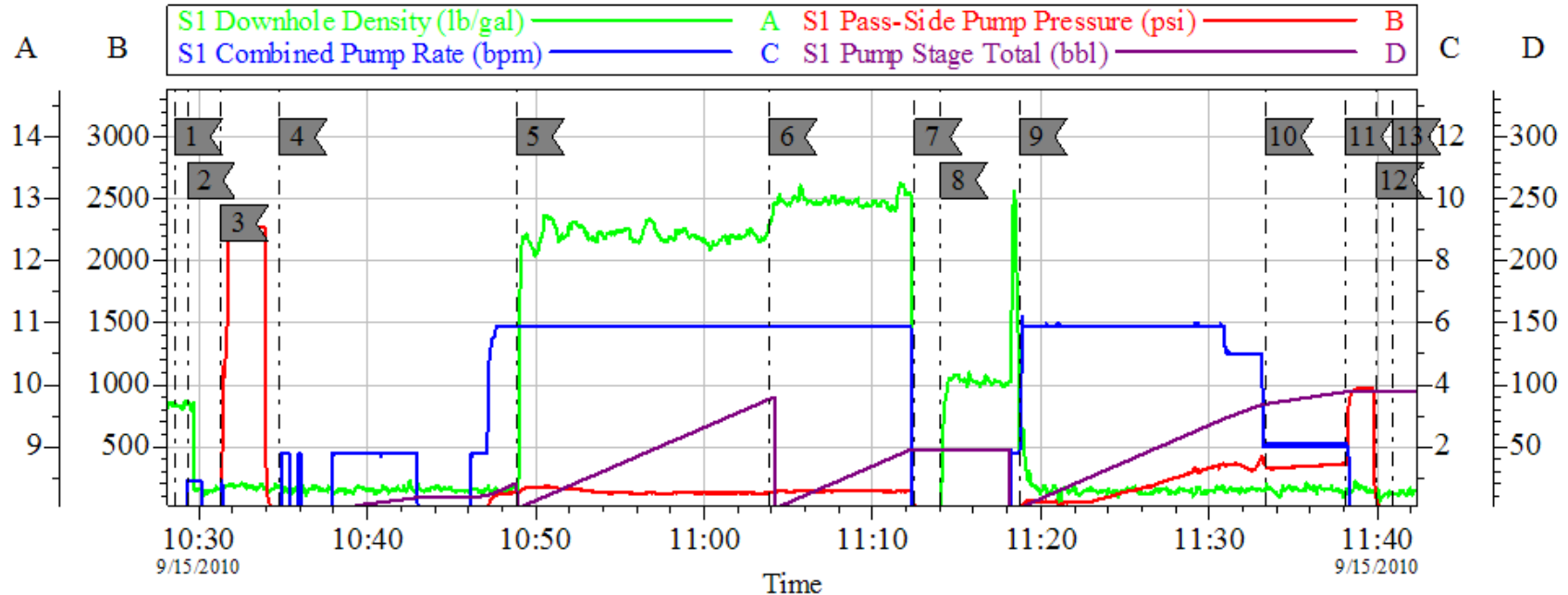
Sold To #: 345242	Ship To #: 2804066	Quote #:	Sales Order #: 7609125
Customer: NOBLE ENERGY INC E-BUSINESS		Customer Rep: Nielson, Dave	
Well Name: FEDERAL	Well #: 8-12A	API/UWI #: 05-045-19135	
Field: PARACHUTE	City (SAP): PARACHUTE	County/Parish: Garfield	State: Colorado
Legal Description:			
Lat: N 39.682 deg. OR N 39 deg. 40 min. 54.048 secs.		Long: W 108.026 deg. OR W -109 deg. 58 min. 25.547 secs.	
Contractor: H&P Drilling		Rig/Platform Name/Num: H&P 322	
Job Purpose: Cement Surface Casing			Ticket Amount:
Well Type: Development Well		Job Type: Cement Surface Casing	
Sales Person: METLI, MARSHALL		Srv Supervisor: KUKUS, CRAIG	MBU ID Emp #: 369124

Activity Description	Date/Time	Cht #	Rate bbl/min	Volume bbl		Pressure psig		Comments
				Stage	Total	Tubing	Casing	
Call Out	09/15/2010 04:30							
Depart Yard Safety Meeting	09/15/2010 06:30							SAFETY MEETING INVOLVING THE ENTIRE CMT CREW
Arrive At Loc	09/15/2010 09:00							
Assessment Of Location Safety Meeting	09/15/2010 09:15							ASSESSMENT OF LOCATION INVOLVING THE ENTIRE CMT CREW
Pre-Rig Up Safety Meeting	09/15/2010 09:25							SAFETY MEETING INVOLVING THE ENTIRE CMT CREW
Rig-Up Equipment	09/15/2010 09:30							
Circulate Well	09/15/2010 09:31							
Pre-Job Safety Meeting	09/15/2010 10:00							SAFETY MEETING INVOLVING EVERYONE ON LOCATION
Start Job	09/15/2010 10:28							TD: 1540 TP: 1530, SJ: 42.10, CASING 8 5/8 24#, MUD: 9.2#, OH: 12 1/4, OFFLINE CEMENTING JOB, RIG CIRCULATED FOR 60 MINUTES AT 6 BBLS/MIN
Other	09/15/2010 10:29							FILL LINES
Pressure Test	09/15/2010 10:31		0.5			2500.0		PRESSURE TEST GOOD
Pump Spacer 1	09/15/2010 10:34		4	20			132.0	FRESH WATER SPACER

Cementing Job Log

Activity Description	Date/Time	Cht #	Rate bbl/ min	Volume bbl		Pressure psig		Comments
				Stage	Total	Tubing	Casing	
Pump Lead Cement	09/15/2010 10:48		6	95.8			158.0	226 sacks, 12.3#/gal, 2.38 ft3/sack, 13.75 gal/sack
Pump Tail Cement	09/15/2010 11:03		6	51.1			158.0	137 sacks, 12.8 #/gal, 3.11 ft3/sack, 11.75 11.75 gal/sack
Shutdown	09/15/2010 11:12							
Drop Top Plug	09/15/2010 11:14							PLUG LEFT THE PLUG CONTAINER
Pump Displacement	09/15/2010 11:18		6	94.6			370.0	
Slow Rate	09/15/2010 11:33		2	84.6			400.0	
Bump Plug	09/15/2010 11:38		2	94.6			985.0	PLUG LANDED
Check Floats	09/15/2010 11:39							FLOATS HELD, 1/2 BBL H2O BACK TO TRUCK
End Job	09/15/2010 11:40							
Pre-Rig Down Safety Meeting	09/15/2010 11:45							SAFETY MEETING INVOLVING THE ENTIRE CMT CREW
Rig-Down Equipment	09/15/2010 12:00							
Safety Meeting - Departing Location	09/15/2010 12:45							SAFETY MEETING INVOLVING THE ENTIRE CMT CREW
Comment	09/15/2010 13:00							THANK YOU FOR USING HALLIBURTON, CRAIG KUKUS AND CREW

NOBLE SURFACE 8 5/8



Local Event Log

1	START JOB	10:28:34	2	PRIME LINES	10:29:20
3	TEST LINES	10:31:18	4	PUMP H2O SPACER	10:34:47
5	PUMP LEAD CMT	10:48:52	6	PUMP TAIL CMT	11:03:53
7	SHUT DOWN	11:12:31	8	DROP PLUG	11:14:02
9	PUMP DISPLACEMENT	11:18:44	10	SLOW RATE	11:33:21
11	BUMP PLUG	11:38:07	12	CHECK FLOATS	11:39:56
13	END JOB	11:40:55			

Customer: NOBLE
Well Description: FED 8-12A
Company Rep: KENNY WILKERSON

Job Date: 15-Sep-2010
Job Type: SURFACE
Cement Supervisor: CRAIG KUKUS

Sales Order #: 7609125
ADC Used: YES
Elite #/Operator: #2 JESSE HAYES

OptiCem v6.4.8
15-Sep-10 11:58