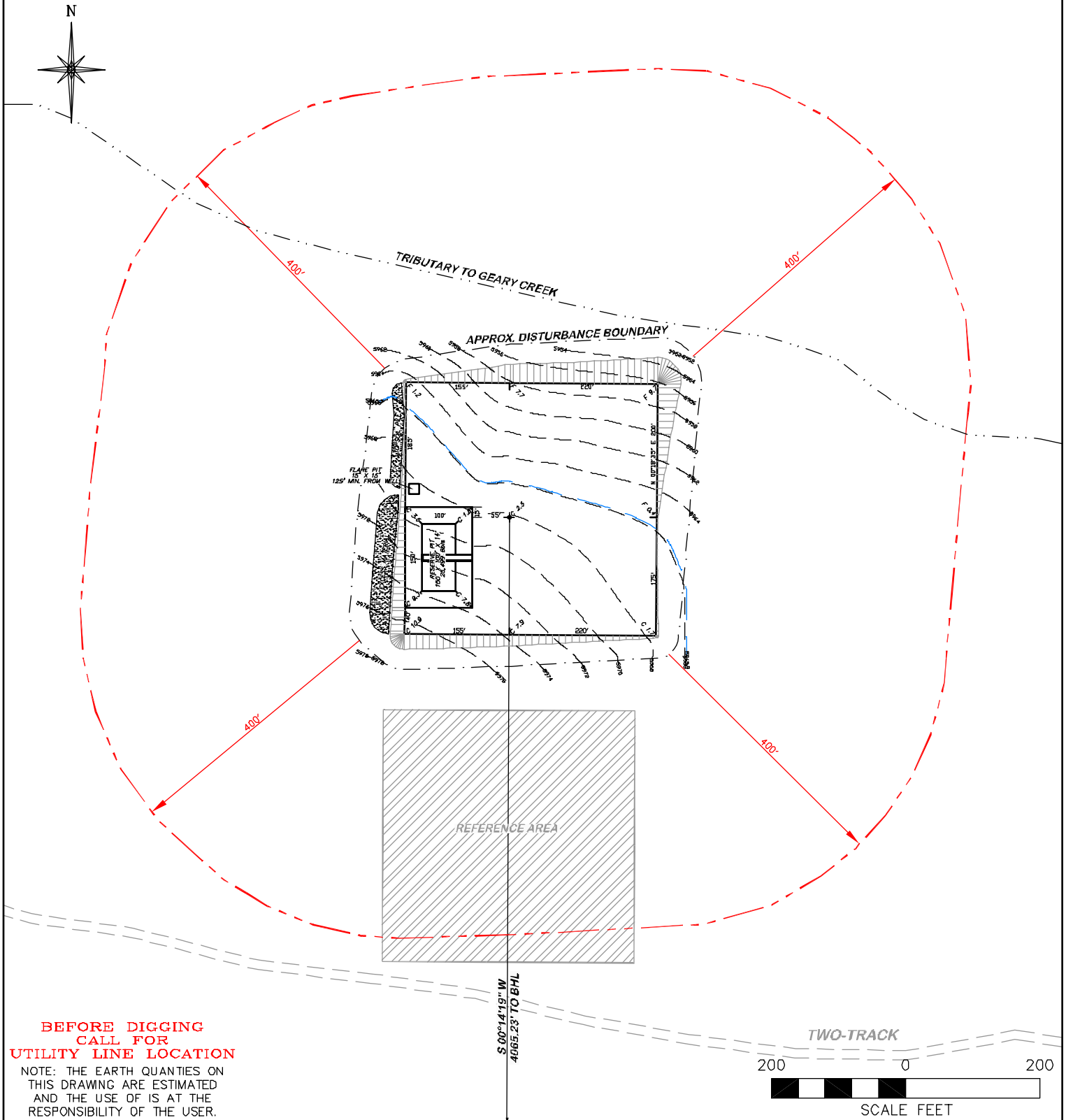



APPROXIMATE DISTURBANCE AREA: 5.3 ACRES±  
 4.7% GRADE ON A NORTHEASTERLY SLOPE  
 UNGRADED ELEVATION: 5968.2'  
 FINISHED ELEVATION: 5965.9'

**2A ATTACHMENT**

**2**



 <p><b>DRG RIFFIN &amp; ASSOCIATES, INC.</b>          (307) 362-6028 1414 ELK ST., ROCK SPRINGS, WY 82901</p>		<b>LOCATION DRAWING</b>	
		<b>CHESAPEAKE ENERGY, LLC.</b> <b>WAGNER 11-65 9-1H</b> <b>SECTION 9, T11N, R65W</b>	
<b>DRAWN: 1/13/11 - MMM</b>	<b>SCALE: 1" = 200'</b>	<b>UNGRADED ELEVATION: 5968.2'</b> <b>FINISHED ELEVATION: 5965.9'</b>	
<b>REVISED: NA</b>	<b>DRG JOB No. 18241</b>		
	<b>EXHIBIT 2D</b>		