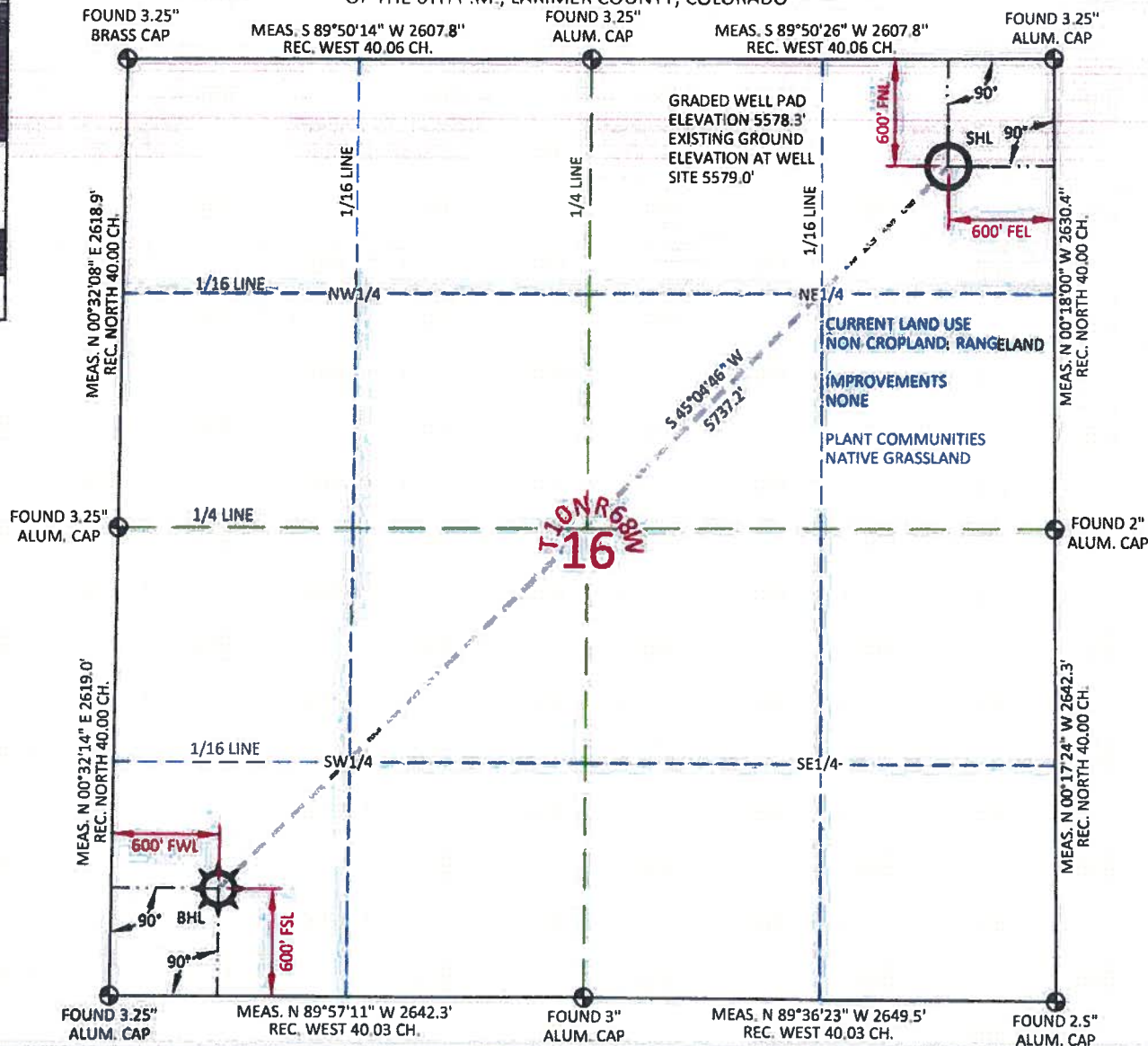


MARATHON RAWHIDE FLATS 10-68-16-1B
 LOCATED WITHIN THE NE1/4 NE1/4 SECTION 16 T10N R68W
 OF THE 6TH P.M., LARIMER COUNTY, COLORADO



SURFACE HOLE LOCATION	
LAT.	40.839661°
LONG.	105.002416°
LAT.	40.839678°
LONG.	105.001888°
LAT.	40°50'22.78"
LONG.	105°00'08.70"
LAT.	40°50'22.84"
LONG.	105°00'06.80"
NORTH	1549123.21
EAST	3137682.77
NORTH	549120.49
EAST	2137832.57
FOOTAGE: 600' FWL - 600' FNL	
MEASURE DATE	12/15/2010
INSTRUMENT OPERATOR	ALEC THOMAS

BOTTOM HOLE LOCATION	
LAT.	40.828604°
LONG.	105.017177°
LAT.	40.828621°
LONG.	105.016648°
LAT.	40°49'42.97"
LONG.	105°01'01.83"
LAT.	40°49'43.03"
LONG.	105°00'59.93"
NORTH	1545072.03
EAST	3133620.35
NORTH	454069.38
EAST	2133770.26
FOOTAGE: 600' FWL - 600' FSL	
MEASURE DATE	12/15/2010
INSTRUMENT OPERATOR	ALEC THOMAS

I, William H. Dolinar, Professional Land Surveyor, CO. RLS # 38070 hereby certify that (in accordance with a request from Anna Walls with Marathon Oil Co, 5555 San Felipe, Houston, TX 77056) I and or personnel under my direction made a survey on the 15th day of December 2010, for the Surface Hole Location and Elevation of Marathon Oil Co. RAWHIDE FLATS 10-68-16-1B being located within the NE1/4 NE1/4 Section 16, T10N, R68W and the Bottom Hole Location being located in the SW1/4 SW1/4 of Section 16, T10N, R68W, both being of the 6th P.M., Larimer County, State of Colorado.

- All bearings and distances are GRID, based on the Colorado State Plane Coordinate System, North Zone, North American Datum 1983 from GPS observations occupying a WHS control point (5/8" rebar) and having the Location and Elevation derived from an Opus Solution.
- Vertical Datum used is of NAVD 88.
- Record Bearings and Distances as shown are based on the General Land Office Survey plat approved on the 16th day of December 1872.



CONFIDENTIALITY NOTES:
 The information contained in this plat is legally privileged and confidential information intended only for the use of the recipients. If you are not the intended recipients, you are hereby notified that any use, dissemination, distribution or copying of this information is strictly prohibited.

WILLIAM H. SMITH & ASSOCIATES P.C.
 SURVEYING CONSULTANTS
 130 EAST SECOND NORTH GREEN RIVER, WY
 PHONE: 307-875-3638
 307-875-3639
 www.whsmithpc.com

DRAWN BY: CED	CHECKED BY: WHD
PROJECT NO: 1068161B	JOB NO: 2011001
REVISIONS:	

- LEGEND**
- FOUND CORNER
 - ⊗ CALCULATED CORNER
 - NOTHING FOUND

LOCATION:
 RAWHIDE FLATS 10-68-16-1B
 WITHIN THE NE/4 NE/4 SECTION 16,
 T 10 N, R 68 W,
 6TH PM.
 LARIMER COUNTY,
 COLORADO

MARATHON OIL COMPANY
 PO BOX 3128, HOUSTON TX, 77253
 5555 SAN FELIPE, HOUSTON TX, 77056

WELL LOCATION PLAT

SCALE: 1"=1000'	EXHIBIT "A"
DATE: 01/01/2011	SHEET 1 OF 1