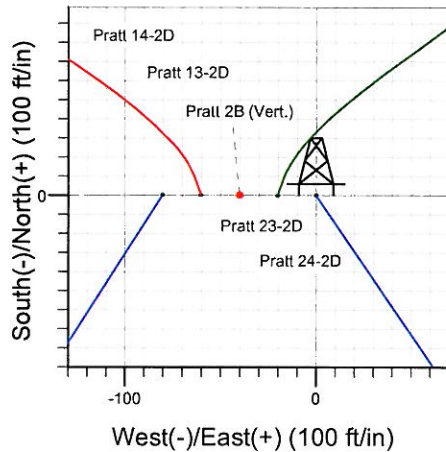
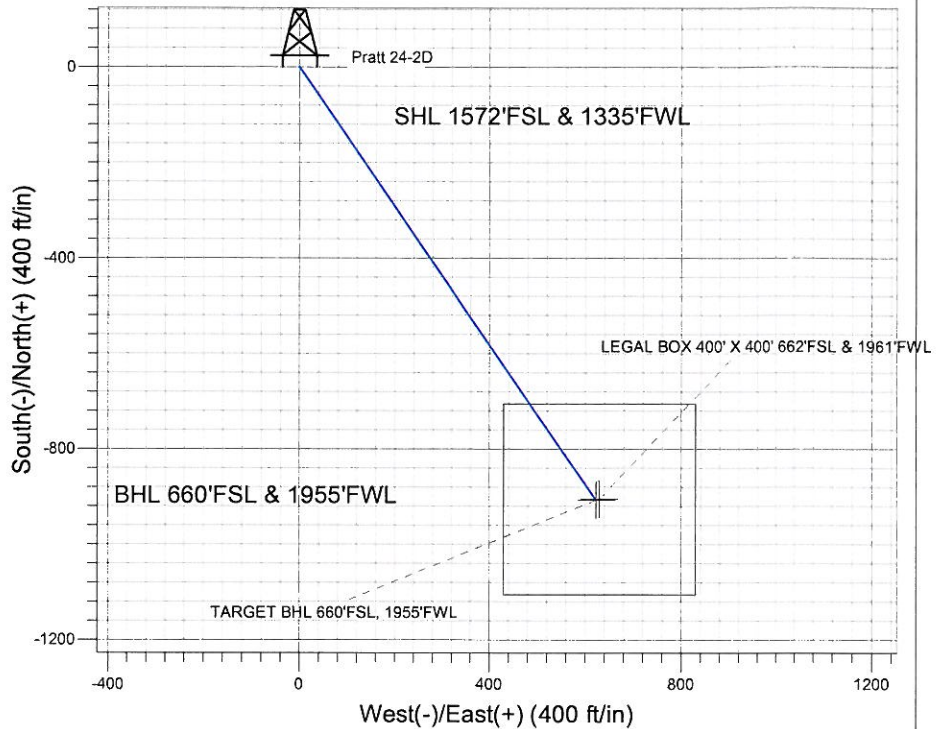
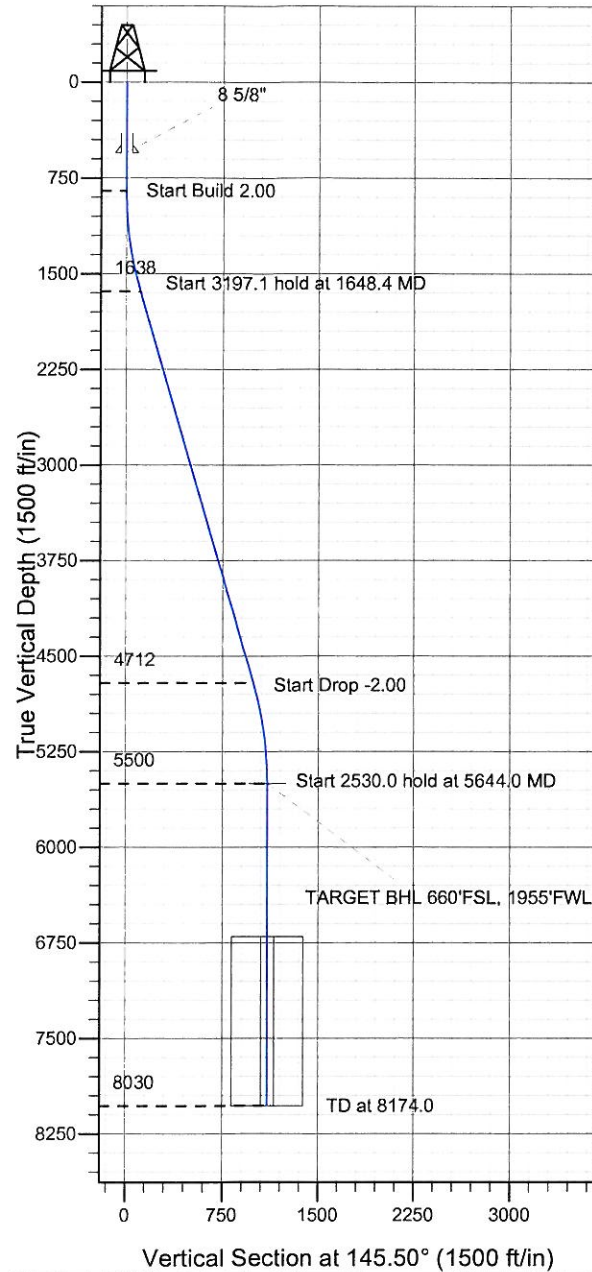


Surface Location: Pratt 14-2D Pad Sec.2-T4N-R68W  
North American Datum 1983 US State Plane 1983 Colorado Northern Zone  
Ground Elevation: 5003.0  
+N/-S +E/-W Northing Easting Latitude Longitude Slot  
0.0 0.0 1367080.52 3146341.80 40.339848 -104.975018  
Original Well Elev WELL @ 5016.0ft (Original Well Elev)

## Synergy Resources



Pratt 14-2D Pad Sec.2-T4N-R68W  
Pratt 24-2D  
Plan #1 (2-10-11)  
10:48, February 15 2011



Azimuths to True North  
Magnetic North: 9.02°

Magnetic Field  
Strength: 53111.5snT  
Dip Angle: 66.98°  
Date: 2/10/2011  
Model: IGRF2010

### WELLBORE TARGET DETAILS (LAT/LONG)

Name	TVD	+N/-S	+E/-W	Latitude	Longitude	Shape
TARGET BHL 660'FSL, 1955'FWL	5500.0	-907.1	623.4	40.337358	-104.972782	Point
LEGAL BOX 400' X 400' 662'FSL & 1961'FWL	6700.0	-905.1	629.4	40.337364	-104.972760	Rectangle (Sides: L400.0 W400.0)

### SECTION DETAILS

Sec	MD	Inc	Azi	TVD	+N/-S	+E/-W	DLeg	TFace	VSec	Target
1	0.0	0.00	0.00	0.0	0.0	0.0	0.00	0.00	0.0	
2	850.0	0.00	0.00	850.0	0.0	0.0	0.00	0.00	0.0	
3	1648.4	15.97	145.50	1638.1	-91.1	62.6	2.00	145.50	110.5	
4	4845.5	15.97	145.50	4711.9	-816.0	560.7	0.00	0.00	990.1	
5	5644.0	0.00	0.00	5500.0	-907.1	623.4	2.00	180.00	1100.6	TARGET BHL 660'FSL, 1955'FWL
6	8174.0	0.00	0.00	8030.0	-907.1	623.4	0.00	0.00	1100.6	



## **Directional**

### **Synergy Resources**

**SEC.2-T4N-R68W**

**Pratt 14-2D Pad Sec.2-T4N-R68W**

**Pratt 24-2D**

**Wellbore #1**

**Plan: Plan #1 (2-10-11)**

## **Standard Planning Report**

**15 February, 2011**



<b>Database:</b>	Landmark	<b>Local Co-ordinate Reference:</b>	Well Pratt 24-2D
<b>Company:</b>	Synergy Resources	<b>TVD Reference:</b>	WELL @ 5016.0ft (Original Well Elev)
<b>Project:</b>	SEC.2-T4N-R68W	<b>MD Reference:</b>	WELL @ 5016.0ft (Original Well Elev)
<b>Site:</b>	Pratt 14-2D Pad Sec.2-T4N-R68W	<b>North Reference:</b>	True
<b>Well:</b>	Pratt 24-2D	<b>Survey Calculation Method:</b>	Minimum Curvature
<b>Wellbore:</b>	Wellbore #1		
<b>Design:</b>	Plan #1 (2-10-11)		

<b>Project</b>	SEC.2-T4N-R68W, Weld County, Colorado		
<b>Map System:</b>	US State Plane 1983	<b>System Datum:</b>	Mean Sea Level
<b>Geo Datum:</b>	North American Datum 1983		Using Well Reference Point
<b>Map Zone:</b>	Colorado Northern Zone		Using geodetic scale factor

Site		Pratt 14-2D Pad Sec.2-T4N-R68W			
Site Position:		Northing:	1,367,080.43 ft	Latitude:	40.339849
From:	Lat/Long	Easting:	3,146,261.80 ft	Longitude:	-104.975305
Position Uncertainty:	0.0 ft	Slot Radius:	"	Grid Convergence:	0.34 °

Well	Pratt 24-2D					
Well Position	+N/-S	-0.4 ft	Northing:	1,367,080.52 ft	Latitude:	40.339848
	+E/-W	80.0 ft	Easting:	3,146,341.80 ft	Longitude:	-104.975018
Position Uncertainty		0.0 ft	Wellhead Elevation:	ft	Ground Level:	5,003.0 ft

<b>Wellbore</b>	Wellbore #1				
<b>Magnetics</b>	<b>Model Name</b>	<b>Sample Date</b>	<b>Declination (°)</b>	<b>Dip Angle (°)</b>	<b>Field Strength (nT)</b>
	IGRF2010	2/10/2011	9.02	66.98	53,112

<b>Design</b>	Plan #1 (2-10-11)			
<b>Audit Notes:</b>				
<b>Version:</b>	<b>Phase:</b>	PROTOTYPE	<b>Tie On Depth:</b>	0.0
<b>Vertical Section:</b>	<b>Depth From (TVD) (ft)</b>	<b>+N/-S (ft)</b>	<b>+E/-W (ft)</b>	<b>Direction (°)</b>
	0.0	0.0	0.0	145.50

<b>Plan Sections</b>										
Measured Depth (ft)	Inclination (°)	Azimuth (°)	Vertical Depth (ft)	+N/-S (ft)	+E/-W (ft)	Dogleg Rate (°/100ft)	Build Rate (°/100ft)	Turn Rate (°/100ft)	TFO (°)	Target
0.0	0.00	0.00	0.0	0.0	0.0	0.00	0.00	0.00	0.00	
850.0	0.00	0.00	850.0	0.0	0.0	0.00	0.00	0.00	0.00	
1,648.4	15.97	145.50	1,638.1	-91.1	62.6	2.00	2.00	0.00	145.50	
4,845.5	15.97	145.50	4,711.9	-816.0	560.7	0.00	0.00	0.00	0.00	
5,644.0	0.00	0.00	5,500.0	-907.1	623.4	2.00	-2.00	0.00	180.00	TARGET BHL 660'I
8,174.0	0.00	0.00	8,030.0	-907.1	623.4	0.00	0.00	0.00	0.00	

<b>Database:</b>	Landmark	<b>Local Co-ordinate Reference:</b>	Well Pratt 24-2D
<b>Company:</b>	Synergy Resources	<b>TVD Reference:</b>	WELL @ 5016.0ft (Original Well Elev)
<b>Project:</b>	SEC.2-T4N-R68W	<b>MD Reference:</b>	WELL @ 5016.0ft (Original Well Elev)
<b>Site:</b>	Pratt 14-2D Pad Sec.2-T4N-R68W	<b>North Reference:</b>	True
<b>Well:</b>	Pratt 24-2D	<b>Survey Calculation Method:</b>	Minimum Curvature
<b>Wellbore:</b>	Wellbore #1		
<b>Design:</b>	Plan #1 (2-10-11)		

### Planned Survey

Measured Depth (ft)	Inclination (°)	Azimuth (°)	Vertical Depth (ft)	+N/-S (ft)	+E/-W (ft)	Vertical Section (ft)	Dogleg Rate (°/100ft)	Build Rate (°/100ft)	Turn Rate (°/100ft)
0.0	0.00	0.00	0.0	0.0	0.0	0.0	0.00	0.00	0.00
40.0	0.00	0.00	40.0	0.0	0.0	0.0	0.00	0.00	0.00
80.0	0.00	0.00	80.0	0.0	0.0	0.0	0.00	0.00	0.00
120.0	0.00	0.00	120.0	0.0	0.0	0.0	0.00	0.00	0.00
160.0	0.00	0.00	160.0	0.0	0.0	0.0	0.00	0.00	0.00
200.0	0.00	0.00	200.0	0.0	0.0	0.0	0.00	0.00	0.00
240.0	0.00	0.00	240.0	0.0	0.0	0.0	0.00	0.00	0.00
280.0	0.00	0.00	280.0	0.0	0.0	0.0	0.00	0.00	0.00
320.0	0.00	0.00	320.0	0.0	0.0	0.0	0.00	0.00	0.00
360.0	0.00	0.00	360.0	0.0	0.0	0.0	0.00	0.00	0.00
400.0	0.00	0.00	400.0	0.0	0.0	0.0	0.00	0.00	0.00
440.0	0.00	0.00	440.0	0.0	0.0	0.0	0.00	0.00	0.00
480.0	0.00	0.00	480.0	0.0	0.0	0.0	0.00	0.00	0.00
520.0	0.00	0.00	520.0	0.0	0.0	0.0	0.00	0.00	0.00
550.0	0.00	0.00	550.0	0.0	0.0	0.0	0.00	0.00	0.00
8 5/8"									
560.0	0.00	0.00	560.0	0.0	0.0	0.0	0.00	0.00	0.00
600.0	0.00	0.00	600.0	0.0	0.0	0.0	0.00	0.00	0.00
640.0	0.00	0.00	640.0	0.0	0.0	0.0	0.00	0.00	0.00
680.0	0.00	0.00	680.0	0.0	0.0	0.0	0.00	0.00	0.00
720.0	0.00	0.00	720.0	0.0	0.0	0.0	0.00	0.00	0.00
760.0	0.00	0.00	760.0	0.0	0.0	0.0	0.00	0.00	0.00
800.0	0.00	0.00	800.0	0.0	0.0	0.0	0.00	0.00	0.00
840.0	0.00	0.00	840.0	0.0	0.0	0.0	0.00	0.00	0.00
850.0	0.00	0.00	850.0	0.0	0.0	0.0	0.00	0.00	0.00
880.0	0.60	145.50	880.0	-0.1	0.1	0.2	2.00	2.00	0.00
920.0	1.40	145.50	920.0	-0.7	0.5	0.9	2.00	2.00	0.00
960.0	2.20	145.50	960.0	-1.7	1.2	2.1	2.00	2.00	0.00
1,000.0	3.00	145.50	999.9	-3.2	2.2	3.9	2.00	2.00	0.00
1,040.0	3.80	145.50	1,039.9	-5.2	3.6	6.3	2.00	2.00	0.00
1,080.0	4.60	145.50	1,079.8	-7.6	5.2	9.2	2.00	2.00	0.00
1,120.0	5.40	145.50	1,119.6	-10.5	7.2	12.7	2.00	2.00	0.00
1,160.0	6.20	145.50	1,159.4	-13.8	9.5	16.8	2.00	2.00	0.00
1,200.0	7.00	145.50	1,199.1	-17.6	12.1	21.4	2.00	2.00	0.00
1,240.0	7.80	145.50	1,238.8	-21.8	15.0	26.5	2.00	2.00	0.00
1,280.0	8.60	145.50	1,278.4	-26.5	18.2	32.2	2.00	2.00	0.00
1,320.0	9.40	145.50	1,317.9	-31.7	21.8	38.5	2.00	2.00	0.00
1,360.0	10.20	145.50	1,357.3	-37.3	25.6	45.3	2.00	2.00	0.00
1,400.0	11.00	145.50	1,396.6	-43.4	29.8	52.6	2.00	2.00	0.00
1,440.0	11.80	145.50	1,435.8	-49.9	34.3	60.5	2.00	2.00	0.00
1,480.0	12.60	145.50	1,474.9	-56.9	39.1	69.0	2.00	2.00	0.00
1,520.0	13.40	145.50	1,513.9	-64.3	44.2	78.0	2.00	2.00	0.00
1,560.0	14.20	145.50	1,552.8	-72.1	49.6	87.5	2.00	2.00	0.00
1,600.0	15.00	145.50	1,591.5	-80.5	55.3	97.6	2.00	2.00	0.00
1,640.0	15.80	145.50	1,630.0	-89.2	61.3	108.2	2.00	2.00	0.00
1,648.4	15.97	145.50	1,638.1	-91.1	62.6	110.5	2.00	2.00	0.00
1,680.0	15.97	145.50	1,668.5	-98.3	67.5	119.2	0.00	0.00	0.00
1,720.0	15.97	145.50	1,706.9	-107.3	73.8	130.2	0.00	0.00	0.00
1,760.0	15.97	145.50	1,745.4	-116.4	80.0	141.2	0.00	0.00	0.00
1,800.0	15.97	145.50	1,783.9	-125.5	86.2	152.2	0.00	0.00	0.00
1,840.0	15.97	145.50	1,822.3	-134.5	92.5	163.2	0.00	0.00	0.00
1,880.0	15.97	145.50	1,860.8	-143.6	98.7	174.3	0.00	0.00	0.00
1,920.0	15.97	145.50	1,899.2	-152.7	104.9	185.3	0.00	0.00	0.00
1,960.0	15.97	145.50	1,937.7	-161.7	111.2	196.3	0.00	0.00	0.00



<b>Database:</b>	Landmark	<b>Local Co-ordinate Reference:</b>	Well Pratt 24-2D
<b>Company:</b>	Synergy Resources	<b>TVD Reference:</b>	WELL @ 5016.0ft (Original Well Elev)
<b>Project:</b>	SEC.2-T4N-R68W	<b>MD Reference:</b>	WELL @ 5016.0ft (Original Well Elev)
<b>Site:</b>	Pratt 14-2D Pad Sec.2-T4N-R68W	<b>North Reference:</b>	True
<b>Well:</b>	Pratt 24-2D	<b>Survey Calculation Method:</b>	Minimum Curvature
<b>Wellbore:</b>	Wellbore #1		
<b>Design:</b>	Plan #1 (2-10-11)		

### Planned Survey

Measured Depth (ft)	Inclination (°)	Azimuth (°)	Vertical Depth (ft)	+N/-S (ft)	+E/-W (ft)	Vertical Section (ft)	Dogleg Rate (°/100ft)	Build Rate (°/100ft)	Turn Rate (°/100ft)
2,000.0	15.97	145.50	1,976.1	-170.8	117.4	207.3	0.00	0.00	0.00
2,040.0	15.97	145.50	2,014.6	-179.9	123.6	218.3	0.00	0.00	0.00
2,080.0	15.97	145.50	2,053.1	-189.0	129.8	229.3	0.00	0.00	0.00
2,120.0	15.97	145.50	2,091.5	-198.0	136.1	240.3	0.00	0.00	0.00
2,160.0	15.97	145.50	2,130.0	-207.1	142.3	251.3	0.00	0.00	0.00
2,200.0	15.97	145.50	2,168.4	-216.2	148.5	262.3	0.00	0.00	0.00
2,240.0	15.97	145.50	2,206.9	-225.2	154.8	273.3	0.00	0.00	0.00
2,280.0	15.97	145.50	2,245.3	-234.3	161.0	284.3	0.00	0.00	0.00
2,320.0	15.97	145.50	2,283.8	-243.4	167.2	295.3	0.00	0.00	0.00
2,360.0	15.97	145.50	2,322.2	-252.4	173.5	306.3	0.00	0.00	0.00
2,400.0	15.97	145.50	2,360.7	-261.5	179.7	317.3	0.00	0.00	0.00
2,440.0	15.97	145.50	2,399.2	-270.6	185.9	328.3	0.00	0.00	0.00
2,480.0	15.97	145.50	2,437.6	-279.7	192.2	339.3	0.00	0.00	0.00
2,520.0	15.97	145.50	2,476.1	-288.7	198.4	350.3	0.00	0.00	0.00
2,560.0	15.97	145.50	2,514.5	-297.8	204.6	361.3	0.00	0.00	0.00
2,600.0	15.97	145.50	2,553.0	-306.9	210.9	372.3	0.00	0.00	0.00
2,640.0	15.97	145.50	2,591.4	-315.9	217.1	383.3	0.00	0.00	0.00
2,680.0	15.97	145.50	2,629.9	-325.0	223.3	394.3	0.00	0.00	0.00
2,720.0	15.97	145.50	2,668.4	-334.1	229.6	405.3	0.00	0.00	0.00
2,760.0	15.97	145.50	2,706.8	-343.1	235.8	416.3	0.00	0.00	0.00
2,800.0	15.97	145.50	2,745.3	-352.2	242.0	427.4	0.00	0.00	0.00
2,840.0	15.97	145.50	2,783.7	-361.3	248.3	438.4	0.00	0.00	0.00
2,880.0	15.97	145.50	2,822.2	-370.3	254.5	449.4	0.00	0.00	0.00
2,920.0	15.97	145.50	2,860.6	-379.4	260.7	460.4	0.00	0.00	0.00
2,960.0	15.97	145.50	2,899.1	-388.5	267.0	471.4	0.00	0.00	0.00
3,000.0	15.97	145.50	2,937.6	-397.6	273.2	482.4	0.00	0.00	0.00
3,040.0	15.97	145.50	2,976.0	-406.6	279.4	493.4	0.00	0.00	0.00
3,080.0	15.97	145.50	3,014.5	-415.7	285.7	504.4	0.00	0.00	0.00
3,120.0	15.97	145.50	3,052.9	-424.8	291.9	515.4	0.00	0.00	0.00
3,160.0	15.97	145.50	3,091.4	-433.8	298.1	526.4	0.00	0.00	0.00
3,200.0	15.97	145.50	3,129.8	-442.9	304.4	537.4	0.00	0.00	0.00
3,240.0	15.97	145.50	3,168.3	-452.0	310.6	548.4	0.00	0.00	0.00
3,280.0	15.97	145.50	3,206.7	-461.0	316.8	559.4	0.00	0.00	0.00
3,320.0	15.97	145.50	3,245.2	-470.1	323.1	570.4	0.00	0.00	0.00
3,360.0	15.97	145.50	3,283.7	-479.2	329.3	581.4	0.00	0.00	0.00
3,400.0	15.97	145.50	3,322.1	-488.2	335.5	592.4	0.00	0.00	0.00
3,440.0	15.97	145.50	3,360.6	-497.3	341.8	603.4	0.00	0.00	0.00
3,480.0	15.97	145.50	3,399.0	-506.4	348.0	614.4	0.00	0.00	0.00
3,520.0	15.97	145.50	3,437.5	-515.5	354.2	625.4	0.00	0.00	0.00
3,560.0	15.97	145.50	3,475.9	-524.5	360.4	636.4	0.00	0.00	0.00
3,600.0	15.97	145.50	3,514.4	-533.6	366.7	647.4	0.00	0.00	0.00
3,640.0	15.97	145.50	3,552.9	-542.7	372.9	658.4	0.00	0.00	0.00
3,680.0	15.97	145.50	3,591.3	-551.7	379.1	669.4	0.00	0.00	0.00
3,720.0	15.97	145.50	3,629.8	-560.8	385.4	680.5	0.00	0.00	0.00
3,760.0	15.97	145.50	3,668.2	-569.9	391.6	691.5	0.00	0.00	0.00
3,800.0	15.97	145.50	3,706.7	-578.9	397.8	702.5	0.00	0.00	0.00
3,840.0	15.97	145.50	3,745.1	-588.0	404.1	713.5	0.00	0.00	0.00
3,880.0	15.97	145.50	3,783.6	-597.1	410.3	724.5	0.00	0.00	0.00
3,920.0	15.97	145.50	3,822.1	-606.1	416.5	735.5	0.00	0.00	0.00
3,960.0	15.97	145.50	3,860.5	-615.2	422.8	746.5	0.00	0.00	0.00
4,000.0	15.97	145.50	3,899.0	-624.3	429.0	757.5	0.00	0.00	0.00
4,040.0	15.97	145.50	3,937.4	-633.4	435.2	768.5	0.00	0.00	0.00
4,080.0	15.97	145.50	3,975.9	-642.4	441.5	779.5	0.00	0.00	0.00
4,120.0	15.97	145.50	4,014.3	-651.5	447.7	790.5	0.00	0.00	0.00



<b>Database:</b>	Landmark	<b>Local Co-ordinate Reference:</b>	Well Pratt 24-2D
<b>Company:</b>	Synergy Resources	<b>TVD Reference:</b>	WELL @ 5016.0ft (Original Well Elev)
<b>Project:</b>	SEC.2-T4N-R68W	<b>MD Reference:</b>	WELL @ 5016.0ft (Original Well Elev)
<b>Site:</b>	Pratt 14-2D Pad Sec.2-T4N-R68W	<b>North Reference:</b>	True
<b>Well:</b>	Pratt 24-2D	<b>Survey Calculation Method:</b>	Minimum Curvature
<b>Wellbore:</b>	Wellbore #1		
<b>Design:</b>	Plan #1 (2-10-11)		

### Planned Survey

Measured Depth (ft)	Inclination (°)	Azimuth (°)	Vertical Depth (ft)	+N/-S (ft)	+E/-W (ft)	Vertical Section (ft)	Dogleg Rate (°/100ft)	Build Rate (°/100ft)	Turn Rate (°/100ft)
4,160.0	15.97	145.50	4,052.8	-660.6	453.9	801.5	0.00	0.00	0.00
4,200.0	15.97	145.50	4,091.2	-669.6	460.2	812.5	0.00	0.00	0.00
4,240.0	15.97	145.50	4,129.7	-678.7	466.4	823.5	0.00	0.00	0.00
4,280.0	15.97	145.50	4,168.2	-687.8	472.6	834.5	0.00	0.00	0.00
4,320.0	15.97	145.50	4,206.6	-696.8	478.9	845.5	0.00	0.00	0.00
4,360.0	15.97	145.50	4,245.1	-705.9	485.1	856.5	0.00	0.00	0.00
4,400.0	15.97	145.50	4,283.5	-715.0	491.3	867.5	0.00	0.00	0.00
4,440.0	15.97	145.50	4,322.0	-724.0	497.6	878.5	0.00	0.00	0.00
4,480.0	15.97	145.50	4,360.4	-733.1	503.8	889.5	0.00	0.00	0.00
4,520.0	15.97	145.50	4,398.9	-742.2	510.0	900.5	0.00	0.00	0.00
4,560.0	15.97	145.50	4,437.4	-751.3	516.3	911.5	0.00	0.00	0.00
4,600.0	15.97	145.50	4,475.8	-760.3	522.5	922.5	0.00	0.00	0.00
4,640.0	15.97	145.50	4,514.3	-769.4	528.7	933.6	0.00	0.00	0.00
4,680.0	15.97	145.50	4,552.7	-778.5	535.0	944.6	0.00	0.00	0.00
4,720.0	15.97	145.50	4,591.2	-787.5	541.2	955.6	0.00	0.00	0.00
4,760.0	15.97	145.50	4,629.6	-796.6	547.4	966.6	0.00	0.00	0.00
4,800.0	15.97	145.50	4,668.1	-805.7	553.7	977.6	0.00	0.00	0.00
4,840.0	15.97	145.50	4,706.6	-814.7	559.9	988.6	0.00	0.00	0.00
4,845.5	15.97	145.50	4,711.9	-816.0	560.7	990.1	0.00	0.00	0.00
4,880.0	15.28	145.50	4,745.1	-823.6	566.0	999.4	2.00	-2.00	0.00
4,920.0	14.48	145.50	4,783.7	-832.1	571.8	1,009.6	2.00	-2.00	0.00
4,960.0	13.68	145.50	4,822.5	-840.1	577.3	1,019.4	2.00	-2.00	0.00
5,000.0	12.88	145.50	4,861.5	-847.7	582.5	1,028.6	2.00	-2.00	0.00
5,040.0	12.08	145.50	4,900.5	-854.8	587.4	1,037.2	2.00	-2.00	0.00
5,080.0	11.28	145.50	4,939.7	-861.5	592.0	1,045.3	2.00	-2.00	0.00
5,120.0	10.48	145.50	4,979.0	-867.7	596.3	1,052.9	2.00	-2.00	0.00
5,160.0	9.68	145.50	5,018.3	-873.5	600.3	1,059.9	2.00	-2.00	0.00
5,200.0	8.88	145.50	5,057.8	-878.8	603.9	1,066.3	2.00	-2.00	0.00
5,240.0	8.08	145.50	5,097.4	-883.7	607.2	1,072.2	2.00	-2.00	0.00
5,280.0	7.28	145.50	5,137.0	-888.1	610.3	1,077.5	2.00	-2.00	0.00
5,320.0	6.48	145.50	5,176.7	-892.0	613.0	1,082.3	2.00	-2.00	0.00
5,360.0	5.68	145.50	5,216.5	-895.5	615.4	1,086.6	2.00	-2.00	0.00
5,400.0	4.88	145.50	5,256.3	-898.5	617.5	1,090.3	2.00	-2.00	0.00
5,440.0	4.08	145.50	5,296.2	-901.1	619.2	1,093.4	2.00	-2.00	0.00
5,480.0	3.28	145.50	5,336.1	-903.2	620.7	1,095.9	2.00	-2.00	0.00
5,520.0	2.48	145.50	5,376.1	-904.9	621.8	1,098.0	2.00	-2.00	0.00
5,560.0	1.68	145.50	5,416.1	-906.1	622.7	1,099.4	2.00	-2.00	0.00
5,600.0	0.88	145.50	5,456.0	-906.8	623.2	1,100.3	2.00	-2.00	0.00
5,640.0	0.08	145.50	5,496.0	-907.1	623.4	1,100.6	2.00	-2.00	0.00
5,644.0	0.00	0.00	5,500.0	-907.1	623.4	1,100.6	2.00	-2.00	0.00
<b>TARGET BHL 660'FSL, 1955'FWL</b>									
5,680.0	0.00	0.00	5,536.0	-907.1	623.4	1,100.6	0.00	0.00	0.00
5,720.0	0.00	0.00	5,576.0	-907.1	623.4	1,100.6	0.00	0.00	0.00
5,760.0	0.00	0.00	5,616.0	-907.1	623.4	1,100.6	0.00	0.00	0.00
5,800.0	0.00	0.00	5,656.0	-907.1	623.4	1,100.6	0.00	0.00	0.00
5,840.0	0.00	0.00	5,696.0	-907.1	623.4	1,100.6	0.00	0.00	0.00
5,880.0	0.00	0.00	5,736.0	-907.1	623.4	1,100.6	0.00	0.00	0.00
5,920.0	0.00	0.00	5,776.0	-907.1	623.4	1,100.6	0.00	0.00	0.00
5,960.0	0.00	0.00	5,816.0	-907.1	623.4	1,100.6	0.00	0.00	0.00
6,000.0	0.00	0.00	5,856.0	-907.1	623.4	1,100.6	0.00	0.00	0.00
6,040.0	0.00	0.00	5,896.0	-907.1	623.4	1,100.6	0.00	0.00	0.00
6,080.0	0.00	0.00	5,936.0	-907.1	623.4	1,100.6	0.00	0.00	0.00
6,120.0	0.00	0.00	5,976.0	-907.1	623.4	1,100.6	0.00	0.00	0.00
6,160.0	0.00	0.00	6,016.0	-907.1	623.4	1,100.6	0.00	0.00	0.00

<b>Database:</b>	Landmark	<b>Local Co-ordinate Reference:</b>	Well Pratt 24-2D
<b>Company:</b>	Synergy Resources	<b>TVD Reference:</b>	WELL @ 5016.0ft (Original Well Elev)
<b>Project:</b>	SEC.2-T4N-R68W	<b>MD Reference:</b>	WELL @ 5016.0ft (Original Well Elev)
<b>Site:</b>	Pratt 14-2D Pad Sec.2-T4N-R68W	<b>North Reference:</b>	True
<b>Well:</b>	Pratt 24-2D	<b>Survey Calculation Method:</b>	Minimum Curvature
<b>Wellbore:</b>	Wellbore #1		
<b>Design:</b>	Plan #1 (2-10-11)		

### Planned Survey

Measured Depth (ft)	Inclination (°)	Azimuth (°)	Vertical Depth (ft)	+N/-S (ft)	+E/-W (ft)	Vertical Section (ft)	Dogleg Rate (°/100ft)	Build Rate (°/100ft)	Turn Rate (°/100ft)
6,200.0	0.00	0.00	6,056.0	-907.1	623.4	1,100.6	0.00	0.00	0.00
6,240.0	0.00	0.00	6,096.0	-907.1	623.4	1,100.6	0.00	0.00	0.00
6,280.0	0.00	0.00	6,136.0	-907.1	623.4	1,100.6	0.00	0.00	0.00
6,320.0	0.00	0.00	6,176.0	-907.1	623.4	1,100.6	0.00	0.00	0.00
6,360.0	0.00	0.00	6,216.0	-907.1	623.4	1,100.6	0.00	0.00	0.00
6,400.0	0.00	0.00	6,256.0	-907.1	623.4	1,100.6	0.00	0.00	0.00
6,440.0	0.00	0.00	6,296.0	-907.1	623.4	1,100.6	0.00	0.00	0.00
6,480.0	0.00	0.00	6,336.0	-907.1	623.4	1,100.6	0.00	0.00	0.00
6,520.0	0.00	0.00	6,376.0	-907.1	623.4	1,100.6	0.00	0.00	0.00
6,560.0	0.00	0.00	6,416.0	-907.1	623.4	1,100.6	0.00	0.00	0.00
6,600.0	0.00	0.00	6,456.0	-907.1	623.4	1,100.6	0.00	0.00	0.00
6,640.0	0.00	0.00	6,496.0	-907.1	623.4	1,100.6	0.00	0.00	0.00
6,680.0	0.00	0.00	6,536.0	-907.1	623.4	1,100.6	0.00	0.00	0.00
6,720.0	0.00	0.00	6,576.0	-907.1	623.4	1,100.6	0.00	0.00	0.00
6,760.0	0.00	0.00	6,616.0	-907.1	623.4	1,100.6	0.00	0.00	0.00
6,800.0	0.00	0.00	6,656.0	-907.1	623.4	1,100.6	0.00	0.00	0.00
6,840.0	0.00	0.00	6,696.0	-907.1	623.4	1,100.6	0.00	0.00	0.00
6,844.0	0.00	0.00	6,700.0	-907.1	623.4	1,100.6	0.00	0.00	0.00
<b>LEGAL BOX 400' X 400' 662'FSL &amp; 1961'FWL</b>									
6,880.0	0.00	0.00	6,736.0	-907.1	623.4	1,100.6	0.00	0.00	0.00
6,920.0	0.00	0.00	6,776.0	-907.1	623.4	1,100.6	0.00	0.00	0.00
6,960.0	0.00	0.00	6,816.0	-907.1	623.4	1,100.6	0.00	0.00	0.00
7,000.0	0.00	0.00	6,856.0	-907.1	623.4	1,100.6	0.00	0.00	0.00
7,040.0	0.00	0.00	6,896.0	-907.1	623.4	1,100.6	0.00	0.00	0.00
7,080.0	0.00	0.00	6,936.0	-907.1	623.4	1,100.6	0.00	0.00	0.00
7,120.0	0.00	0.00	6,976.0	-907.1	623.4	1,100.6	0.00	0.00	0.00
7,160.0	0.00	0.00	7,016.0	-907.1	623.4	1,100.6	0.00	0.00	0.00
7,200.0	0.00	0.00	7,056.0	-907.1	623.4	1,100.6	0.00	0.00	0.00
7,240.0	0.00	0.00	7,096.0	-907.1	623.4	1,100.6	0.00	0.00	0.00
7,280.0	0.00	0.00	7,136.0	-907.1	623.4	1,100.6	0.00	0.00	0.00
7,320.0	0.00	0.00	7,176.0	-907.1	623.4	1,100.6	0.00	0.00	0.00
7,360.0	0.00	0.00	7,216.0	-907.1	623.4	1,100.6	0.00	0.00	0.00
7,400.0	0.00	0.00	7,256.0	-907.1	623.4	1,100.6	0.00	0.00	0.00
7,440.0	0.00	0.00	7,296.0	-907.1	623.4	1,100.6	0.00	0.00	0.00
7,480.0	0.00	0.00	7,336.0	-907.1	623.4	1,100.6	0.00	0.00	0.00
7,520.0	0.00	0.00	7,376.0	-907.1	623.4	1,100.6	0.00	0.00	0.00
7,560.0	0.00	0.00	7,416.0	-907.1	623.4	1,100.6	0.00	0.00	0.00
7,600.0	0.00	0.00	7,456.0	-907.1	623.4	1,100.6	0.00	0.00	0.00
7,640.0	0.00	0.00	7,496.0	-907.1	623.4	1,100.6	0.00	0.00	0.00
7,680.0	0.00	0.00	7,536.0	-907.1	623.4	1,100.6	0.00	0.00	0.00
7,720.0	0.00	0.00	7,576.0	-907.1	623.4	1,100.6	0.00	0.00	0.00
7,760.0	0.00	0.00	7,616.0	-907.1	623.4	1,100.6	0.00	0.00	0.00
7,800.0	0.00	0.00	7,656.0	-907.1	623.4	1,100.6	0.00	0.00	0.00
7,840.0	0.00	0.00	7,696.0	-907.1	623.4	1,100.6	0.00	0.00	0.00
7,880.0	0.00	0.00	7,736.0	-907.1	623.4	1,100.6	0.00	0.00	0.00
7,920.0	0.00	0.00	7,776.0	-907.1	623.4	1,100.6	0.00	0.00	0.00
7,960.0	0.00	0.00	7,816.0	-907.1	623.4	1,100.6	0.00	0.00	0.00
8,000.0	0.00	0.00	7,856.0	-907.1	623.4	1,100.6	0.00	0.00	0.00
8,040.0	0.00	0.00	7,896.0	-907.1	623.4	1,100.6	0.00	0.00	0.00
8,080.0	0.00	0.00	7,936.0	-907.1	623.4	1,100.6	0.00	0.00	0.00
8,120.0	0.00	0.00	7,976.0	-907.1	623.4	1,100.6	0.00	0.00	0.00
8,160.0	0.00	0.00	8,016.0	-907.1	623.4	1,100.6	0.00	0.00	0.00
8,174.0	0.00	0.00	8,030.0	-907.1	623.4	1,100.6	0.00	0.00	0.00



<b>Database:</b>	Landmark	<b>Local Co-ordinate Reference:</b>	Well Pratt 24-2D
<b>Company:</b>	Synergy Resources	<b>TVD Reference:</b>	WELL @ 5016.0ft (Original Well Elev)
<b>Project:</b>	SEC.2-T4N-R68W	<b>MD Reference:</b>	WELL @ 5016.0ft (Original Well Elev)
<b>Site:</b>	Pratt 14-2D Pad Sec.2-T4N-R68W	<b>North Reference:</b>	True
<b>Well:</b>	Pratt 24-2D	<b>Survey Calculation Method:</b>	Minimum Curvature
<b>Wellbore:</b>	Wellbore #1		
<b>Design:</b>	Plan #1 (2-10-11)		

### Targets

#### Target Name

- hit/miss target	Dip Angle (°)	Dip Dir. (°)	TVD (ft)	+N/-S (ft)	+E/-W (ft)	Northing (ft)	Easting (ft)	Latitude	Longitude
- Shape									
TARGET BHL 660'FS	0.00	0.00	5,500.0	-907.1	623.4	1,366,177.17	3,146,970.49	40.337358	-104.972782
- plan hits target center									
- Point									
LEGAL BOX 400' X 400'	0.00	0.00	6,700.0	-905.1	629.4	1,366,179.21	3,146,976.52	40.337364	-104.972760
- plan misses target center by 6.4ft at 6844.0ft MD (6700.0 TVD, -907.1 N, 623.4 E)									
- Rectangle (sides W400.0 H400.0 D1,330.0)									

### Casing Points

Measured Depth (ft)	Vertical Depth (ft)	Name	Casing Diameter (")	Hole Diameter (")
550.0	550.0	8 5/8"	8-5/8	12-1/4





## **Directional**

### **Synergy Resources**

**SEC.2-T4N-R68W**

**Pratt 14-2D Pad Sec.2-T4N-R68W**

**Pratt 24-2D**

**Wellbore #1**

**Plan #1 (2-10-11)**

## **Anticollision Report**

**15 February, 2011**

<b>Company:</b>	Synergy Resources	<b>Local Co-ordinate Reference:</b>	Well Pratt 24-2D
<b>Project:</b>	SEC.2-T4N-R68W	<b>TVD Reference:</b>	WELL @ 5016.0ft (Original Well Elev)
<b>Reference Site:</b>	Pratt 14-2D Pad Sec.2-T4N-R68W	<b>MD Reference:</b>	WELL @ 5016.0ft (Original Well Elev)
<b>Site Error:</b>	0.0ft	<b>North Reference:</b>	True
<b>Reference Well:</b>	Pratt 24-2D	<b>Survey Calculation Method:</b>	Minimum Curvature
<b>Well Error:</b>	0.0ft	<b>Output errors are at</b>	2.00 sigma
<b>Reference Wellbore</b>	Wellbore #1	<b>Database:</b>	Landmark
<b>Reference Design:</b>	Plan #1 (2-10-11)	<b>Offset TVD Reference:</b>	Offset Datum

<b>Reference</b>	Plan #1 (2-10-11)		
<b>Filter type:</b>	NO GLOBAL FILTER: Using user defined selection & filtering criteria		
<b>Interpolation Method:</b>	Stations	<b>Error Model:</b>	ISCWSA
<b>Depth Range:</b>	Unlimited	<b>Scan Method:</b>	Closest Approach 3D
<b>Results Limited by:</b>	Maximum center-center distance of 10,000.0ft		
<b>Warning Levels Evaluated at:</b>	2.00 Sigma	<b>Error Surface:</b>	Elliptical Conic

<b>Survey Tool Program</b>	Date 2/15/2011			
<b>From (ft)</b>	<b>To (ft)</b>	<b>Survey (Wellbore)</b>	<b>Tool Name</b>	<b>Description</b>
0.0	8,174.0	Plan #1 (2-10-11) (Wellbore #1)	MWD	MWD - Standard

<b>Summary</b>						
<b>Site Name</b>	<b>Reference Measured Depth (ft)</b>	<b>Offset Measured Depth (ft)</b>	<b>Distance Between Centres (ft)</b>	<b>Distance Between Ellipses (ft)</b>	<b>Separation Factor</b>	<b>Warning</b>
<b>Offset Well - Wellbore - Design</b>						
Pratt 14-2D Pad Sec.2-T4N-R68W						
Pratt 23-2D - Wellbore #1 - Plan #1 (2-10-11)	822.9	824.0	19.0	15.5	5.452 CC	
Pratt 23-2D - Wellbore #1 - Plan #1 (2-10-11)	850.0	851.1	19.1	15.5	5.293 ES, SF	

<b>Offset Design</b> Pratt 14-2D Pad Sec.2-T4N-R68W - Pratt 23-2D - Wellbore #1 - Plan #1 (2-10-11)												
Survey Program: 0-MWD												
<b>Reference</b>	<b>Offset</b>	<b>Semi Major Axis</b>		<b>Distance</b>								
<b>Measured Depth (ft)</b>	<b>Vertical Depth (ft)</b>	<b>Measured Depth (ft)</b>	<b>Vertical Depth (ft)</b>	<b>Reference (ft)</b>	<b>Offset (ft)</b>	<b>Highside Toolface (°)</b>	<b>Offset Wellbore Centre +N/-S (ft)</b>	<b>+E/-W (ft)</b>	<b>Between Centres (ft)</b>	<b>Between Ellipses (ft)</b>	<b>Minimum Separation (ft)</b>	<b>Separation Factor</b>
0.0	0.0	1.0	1.0	0.0	0.0	-90.02	0.0	-20.2	20.2	20.2	0.00	N/A
100.0	100.0	101.0	101.0	0.1	0.1	-90.02	0.0	-20.2	20.2	20.0	0.23	88.906
200.0	200.0	201.0	201.0	0.3	0.3	-90.02	0.0	-20.2	20.2	19.5	0.68	29.832
300.0	300.0	301.0	301.0	0.6	0.6	-90.02	0.0	-20.2	20.2	19.1	1.13	17.923
400.0	400.0	401.0	401.0	0.8	0.8	-90.02	0.0	-20.2	20.2	18.6	1.58	12.810
500.0	500.0	501.0	501.0	1.0	1.0	-90.02	0.0	-20.2	20.2	18.2	2.03	9.966
600.0	600.0	601.0	601.0	1.2	1.2	-90.02	0.0	-20.2	20.2	17.7	2.47	8.156
700.0	700.0	701.2	701.2	1.5	1.5	-87.28	0.9	-19.8	19.9	16.9	2.92	6.793
800.0	800.0	801.2	801.1	1.7	1.7	-74.50	5.1	-18.3	19.0	15.6	3.37	5.638
822.9	822.9	824.0	823.9	1.7	1.7	-70.00	6.5	-17.8	19.0	15.5	3.48	5.452 CC
850.0	850.0	851.1	850.8	1.8	1.8	-63.96	8.4	-17.1	19.1	15.5	3.60	5.293 ES, SF
900.0	900.0	900.9	900.5	1.9	1.9	163.38	12.4	-15.6	20.3	16.5	3.82	5.328
1,000.0	999.9	1,000.4	999.4	2.1	2.2	-172.09	21.4	-10.1	27.6	23.4	4.23	6.533
1,100.0	1,099.7	1,098.9	1,097.1	2.3	2.4	-156.07	31.5	-1.6	41.4	36.8	4.66	8.888
1,200.0	1,199.1	1,196.3	1,193.1	2.5	2.7	-146.85	42.6	10.0	60.7	55.6	5.11	11.876
1,300.0	1,298.2	1,292.3	1,287.2	2.7	3.0	-141.32	54.6	24.4	84.7	79.1	5.59	15.149
1,400.0	1,396.6	1,387.4	1,379.9	3.0	3.4	-137.71	67.5	41.6	113.0	106.8	6.11	18.491
1,500.0	1,494.4	1,481.5	1,471.1	3.4	3.8	-135.74	80.8	60.1	144.6	137.9	6.67	21.669
1,600.0	1,591.5	1,575.5	1,562.4	3.8	4.2	-135.10	94.1	78.6	178.6	171.4	7.28	24.545
1,648.4	1,638.1	1,620.7	1,606.2	4.0	4.4	-135.06	100.5	87.4	196.0	188.4	7.58	25.846
1,700.0	1,687.7	1,668.7	1,652.8	4.2	4.6	-135.35	107.3	96.9	214.7	206.8	7.93	27.069
1,800.0	1,783.9	1,761.9	1,743.2	4.7	5.1	-135.78	120.4	115.1	251.1	242.4	8.63	29.096
1,900.0	1,880.0	1,855.0	1,833.6	5.2	5.5	-136.11	133.6	133.4	287.4	278.1	9.35	30.753
2,000.0	1,976.1	1,948.2	1,924.0	5.8	6.0	-136.36	146.7	151.7	323.8	313.7	10.08	32.123
2,100.0	2,072.3	2,041.3	2,014.4	6.3	6.4	-136.57	159.9	170.0	360.1	349.3	10.83	33.267



<b>Company:</b>	Synergy Resources	<b>Local Co-ordinate Reference:</b>	Well Pratt 24-2D
<b>Project:</b>	SEC.2-T4N-R68W	<b>TVD Reference:</b>	WELL @ 5016.0ft (Original Well Elev)
<b>Reference Site:</b>	Pratt 14-2D Pad Sec.2-T4N-R68W	<b>MD Reference:</b>	WELL @ 5016.0ft (Original Well Elev)
<b>Site Error:</b>	0.0ft	<b>North Reference:</b>	True
<b>Reference Well:</b>	Pratt 24-2D	<b>Survey Calculation Method:</b>	Minimum Curvature
<b>Well Error:</b>	0.0ft	<b>Output errors are at</b>	2.00 sigma
<b>Reference Wellbore</b>	Wellbore #1	<b>Database:</b>	Landmark
<b>Reference Design:</b>	Plan #1 (2-10-11)	<b>Offset TVD Reference:</b>	Offset Datum

Offset Design Pratt 14-2D Pad Sec.2-T4N-R68W - Pratt 23-2D - Wellbore #1 - Plan #1 (2-10-11)													Offset Site Error: 0.0 ft	
Survey Program: 0-MWD													Offset Well Error: 0.0 ft	
Reference		Offset		Semi Major Axis			Distance						Warning	
Measured Depth (ft)	Vertical Depth (ft)	Measured Depth (ft)	Vertical Depth (ft)	Reference (ft)	Offset (ft)	Highside Toolface (°)	Offset Wellbore Centre +N/-S (ft)	+E/-W (ft)	Between Centres (ft)	Between Ellipses (ft)	Minimum Separation (ft)	Separation Factor		
2,200.0	2,168.4	2,134.5	2,104.8	6.8	6.9	-136.73	173.0	188.3	396.5	384.9	11.58	34.234		
2,300.0	2,264.6	2,227.6	2,195.1	7.4	7.3	-136.87	186.2	206.6	432.9	420.5	12.35	35.058		
2,400.0	2,360.7	2,320.8	2,285.5	8.0	7.8	-136.98	199.3	224.9	469.3	456.1	13.12	35.767		
2,500.0	2,456.8	2,413.9	2,375.9	8.5	8.2	-137.08	212.5	243.1	505.6	491.7	13.90	36.382		
2,600.0	2,553.0	2,507.1	2,466.3	9.1	8.7	-137.17	225.6	261.4	542.0	527.3	14.68	36.919		
2,700.0	2,649.1	2,600.2	2,556.7	9.7	9.2	-137.24	238.8	279.7	578.4	562.9	15.47	37.393		
2,800.0	2,745.3	2,693.4	2,647.0	10.2	9.6	-137.31	251.9	298.0	614.8	598.5	16.26	37.812		
2,900.0	2,841.4	2,786.5	2,737.4	10.8	10.1	-137.37	265.1	316.3	651.1	634.1	17.05	38.186		
3,000.0	2,937.6	2,879.6	2,827.8	11.4	10.6	-137.42	278.2	334.6	687.5	669.7	17.85	38.521		
3,100.0	3,033.7	2,972.8	2,918.2	11.9	11.0	-137.47	291.4	352.9	723.9	705.3	18.65	38.822		
3,200.0	3,129.8	3,065.9	3,008.6	12.5	11.5	-137.51	304.5	371.1	760.3	740.8	19.45	39.095		
3,300.0	3,226.0	3,159.1	3,099.0	13.1	12.0	-137.55	317.7	389.4	796.7	776.4	20.25	39.343		
3,400.0	3,322.1	3,252.2	3,189.3	13.7	12.4	-137.58	330.8	407.7	833.0	812.0	21.05	39.568		
3,500.0	3,418.3	3,345.4	3,279.7	14.3	12.9	-137.62	344.0	426.0	869.4	847.6	21.86	39.775		
3,600.0	3,514.4	3,438.5	3,370.1	14.8	13.4	-137.65	357.1	444.3	905.8	883.1	22.67	39.965		
3,700.0	3,610.5	3,531.7	3,460.5	15.4	13.9	-137.67	370.3	462.6	942.2	918.7	23.47	40.140		
3,800.0	3,706.7	3,624.8	3,550.9	16.0	14.3	-137.70	383.4	480.9	978.6	954.3	24.28	40.301		
3,900.0	3,802.8	3,718.0	3,641.3	16.6	14.8	-137.72	396.6	499.2	1,014.9	989.9	25.09	40.451		
4,000.0	3,899.0	3,811.1	3,731.6	17.2	15.3	-137.75	409.7	517.4	1,051.3	1,025.4	25.90	40.589		
4,100.0	3,995.1	3,904.3	3,822.0	17.7	15.8	-137.77	422.9	535.7	1,087.7	1,061.0	26.71	40.719		
4,200.0	4,091.2	3,997.4	3,912.4	18.3	16.2	-137.79	436.0	554.0	1,124.1	1,096.6	27.53	40.839		
4,300.0	4,187.4	4,090.5	4,002.8	18.9	16.7	-137.80	449.2	572.3	1,160.5	1,132.1	28.34	40.952		
4,400.0	4,283.5	4,183.7	4,093.2	19.5	17.2	-137.82	462.3	590.6	1,196.9	1,167.7	29.15	41.057		
4,500.0	4,379.7	4,276.8	4,183.5	20.1	17.6	-137.84	475.5	608.9	1,233.2	1,203.3	29.97	41.156		
4,600.0	4,475.8	4,370.0	4,273.9	20.6	18.1	-137.85	488.6	627.2	1,269.6	1,238.8	30.78	41.249		
4,700.0	4,572.0	4,468.4	4,389.2	21.2	18.7	-137.91	504.6	649.4	1,305.4	1,273.8	31.64	41.256		
4,800.0	4,668.1	4,623.9	4,522.2	21.8	19.1	-138.17	519.7	670.3	1,338.6	1,306.1	32.44	41.267		
4,845.5	4,711.9	4,686.4	4,583.9	22.1	19.3	-138.36	525.4	678.3	1,352.7	1,319.9	32.78	41.266		
4,900.0	4,764.4	4,761.9	4,658.7	22.4	19.5	-138.83	531.2	686.4	1,368.3	1,335.1	33.21	41.202		
5,000.0	4,861.5	4,902.8	4,798.9	22.7	19.8	-139.68	539.0	697.2	1,392.9	1,359.0	33.89	41.095		
5,100.0	4,959.3	5,045.8	4,941.8	23.1	20.0	-140.51	542.7	702.4	1,411.7	1,377.2	34.47	40.957		
5,200.0	5,057.8	5,162.8	5,058.8	23.4	20.2	-141.18	543.1	702.9	1,425.3	1,390.4	34.93	40.800		
5,300.0	5,156.9	5,261.9	5,157.9	23.6	20.3	-141.66	543.1	702.9	1,436.1	1,400.8	35.35	40.630		
5,400.0	5,256.3	5,361.3	5,257.3	23.9	20.4	-142.01	543.1	702.9	1,444.2	1,408.4	35.72	40.431		
5,500.0	5,356.1	5,461.1	5,357.1	24.0	20.5	-142.24	543.1	702.9	1,449.5	1,413.5	36.05	40.208		
5,600.0	5,456.0	5,561.1	5,457.0	24.2	20.6	-142.35	543.1	702.9	1,452.1	1,415.8	36.34	39.960		
5,644.0	5,500.0	5,605.0	5,501.0	24.2	20.7	3.14	543.1	702.9	1,452.4	1,415.9	36.46	39.840		
5,700.0	5,556.0	5,661.1	5,557.0	24.3	20.8	3.14	543.1	702.9	1,452.4	1,415.8	36.61	39.672		
5,800.0	5,656.0	5,761.1	5,657.0	24.3	20.9	3.14	543.1	702.9	1,452.4	1,415.5	36.88	39.379		
5,900.0	5,756.0	5,861.1	5,757.0	24.4	21.0	3.14	543.1	702.9	1,452.4	1,415.2	37.16	39.086		
6,000.0	5,856.0	5,961.1	5,857.0	24.5	21.1	3.14	543.1	702.9	1,452.4	1,414.9	37.44	38.794		
6,100.0	5,956.0	6,061.1	5,957.0	24.6	21.3	3.14	543.1	702.9	1,452.4	1,414.7	37.72	38.502		
6,200.0	6,056.0	6,161.1	6,057.0	24.7	21.4	3.14	543.1	702.9	1,452.4	1,414.4	38.01	38.212		
6,300.0	6,156.0	6,261.1	6,157.0	24.8	21.5	3.14	543.1	702.9	1,452.4	1,414.1	38.30	37.924		
6,400.0	6,256.0	6,361.1	6,257.0	24.9	21.7	3.14	543.1	702.9	1,452.4	1,413.8	38.59	37.636		
6,500.0	6,356.0	6,461.1	6,357.0	25.1	21.8	3.14	543.1	702.9	1,452.4	1,413.5	38.89	37.350		
6,600.0	6,456.0	6,561.1	6,457.0	25.2	22.0	3.14	543.1	702.9	1,452.4	1,413.2	39.18	37.066		
6,700.0	6,556.0	6,661.1	6,557.0	25.3	22.1	3.14	543.1	702.9	1,452.4	1,412.9	39.48	36.783		
6,800.0	6,656.0	6,761.1	6,657.0	25.4	22.2	3.14	543.1	702.9	1,452.4	1,412.6	39.79	36.502		
6,900.0	6,756.0	6,861.1	6,757.0	25.5	22.4	3.14	543.1	702.9	1,452.4	1,412.3	40.10	36.223		
7,000.0	6,856.0	6,961.1	6,857.0	25.6	22.5	3.14	543.1	702.9	1,452.4	1,412.0	40.41	35.945		
7,100.0	6,956.0	7,061.1	6,957.0	25.7	22.7	3.14	543.1	702.9	1,452.4	1,411.7	40.72	35.670		

CC - Min centre to center distance or convergent point, SF - min separation factor, ES - min ellipse separation

**Company:** Synergy Resources  
**Project:** SEC.2-T4N-R68W  
**Reference Site:** Pratt 14-2D Pad Sec.2-T4N-R68W  
**Site Error:** 0.0ft  
**Reference Well:** Pratt 24-2D  
**Well Error:** 0.0ft  
**Reference Wellbore:** Wellbore #1  
**Reference Design:** Plan #1 (2-10-11)

**Local Co-ordinate Reference:** Well Pratt 24-2D  
**TVD Reference:** WELL @ 5016.0ft (Original Well Elev)  
**MD Reference:** WELL @ 5016.0ft (Original Well Elev)  
**North Reference:** True  
**Survey Calculation Method:** Minimum Curvature  
**Output errors are at** 2.00 sigma  
**Database:** Landmark  
**Offset TVD Reference:** Offset Datum

Offset Design Pratt 14-2D Pad Sec.2-T4N-R68W - Pratt 23-2D - Wellbore #1 - Plan #1 (2-10-11)													Offset Site Error: 0.0 ft	
Survey Program: 0-MWD													Offset Well Error: 0.0 ft	
Reference		Offset		Semi Major Axis			Distance							Warning
Measured Depth (ft)	Vertical Depth (ft)	Measured Depth (ft)	Vertical Depth (ft)	Reference (ft)	Offset (ft)	Highside Toolface (°)	Offset Wellbore Centre +N/-S (ft)	+E/-W (ft)	Between Centres (ft)	Between Ellipses (ft)	Minimum Separation (ft)	Separation Factor		
7,200.0	7,056.0	7,161.1	7,057.0	25.8	22.8	3.14	543.1	702.9	1,452.4	1,411.3	41.03	35.396		
7,300.0	7,156.0	7,261.1	7,157.0	26.0	23.0	3.14	543.1	702.9	1,452.4	1,411.0	41.35	35.125		
7,400.0	7,256.0	7,361.1	7,257.0	26.1	23.1	3.14	543.1	702.9	1,452.4	1,410.7	41.67	34.856		
7,500.0	7,356.0	7,461.1	7,357.0	26.2	23.3	3.14	543.1	702.9	1,452.4	1,410.4	41.99	34.588		
7,600.0	7,456.0	7,561.1	7,457.0	26.3	23.4	3.14	543.1	702.9	1,452.4	1,410.1	42.31	34.323		
7,700.0	7,556.0	7,661.1	7,557.0	26.4	23.6	3.14	543.1	702.9	1,452.4	1,409.7	42.64	34.061		
7,800.0	7,656.0	7,761.1	7,657.0	26.6	23.7	3.14	543.1	702.9	1,452.4	1,409.4	42.97	33.800		
7,900.0	7,756.0	7,861.1	7,757.0	26.7	23.9	3.14	543.1	702.9	1,452.4	1,409.1	43.30	33.542		
8,000.0	7,856.0	7,961.1	7,857.0	26.8	24.0	3.14	543.1	702.9	1,452.4	1,408.7	43.63	33.286		
8,100.0	7,956.0	8,061.1	7,957.0	26.9	24.2	3.14	543.1	702.9	1,452.4	1,408.4	43.97	33.032		
8,149.0	8,005.0	8,110.0	8,006.0	27.0	24.3	3.14	543.1	702.9	1,452.4	1,408.2	44.13	32.909		
8,174.0	8,030.0	8,134.0	8,030.0	27.0	24.3	3.14	543.1	702.9	1,452.4	1,408.2	44.22	32.847		



**Company:** Synergy Resources  
**Project:** SEC.2-T4N-R68W  
**Reference Site:** Pratt 14-2D Pad Sec.2-T4N-R68W  
**Site Error:** 0.0ft  
**Reference Well:** Pratt 24-2D  
**Well Error:** 0.0ft  
**Reference Wellbore:** Wellbore #1  
**Reference Design:** Plan #1 (2-10-11)

**Local Co-ordinate Reference:** Well Pratt 24-2D  
**TVD Reference:** WELL @ 5016.0ft (Original Well Elev)  
**MD Reference:** WELL @ 5016.0ft (Original Well Elev)  
**North Reference:** True  
**Survey Calculation Method:** Minimum Curvature  
**Output errors are at** 2.00 sigma  
**Database:** Landmark  
**Offset TVD Reference:** Offset Datum

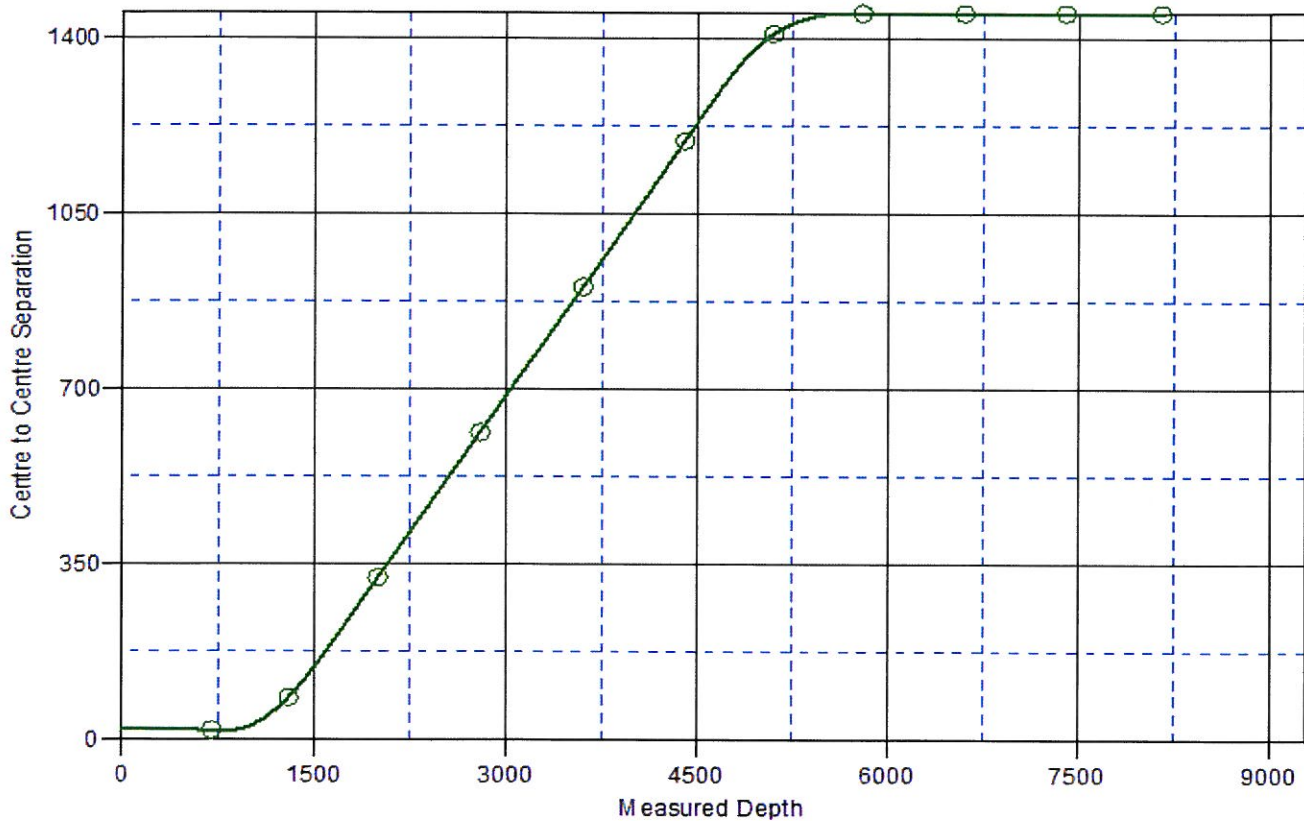
Reference Depths are relative to WELL @ 5016.0ft (Original Well Elev) Coordinates are relative to: Pratt 24-2D

Offset Depths are relative to Offset Datum

Coordinate System is US State Plane 1983, Colorado Northern Zone

Grid Convergence at Surface is: 0.34°

### Ladder Plot



### LEGEND

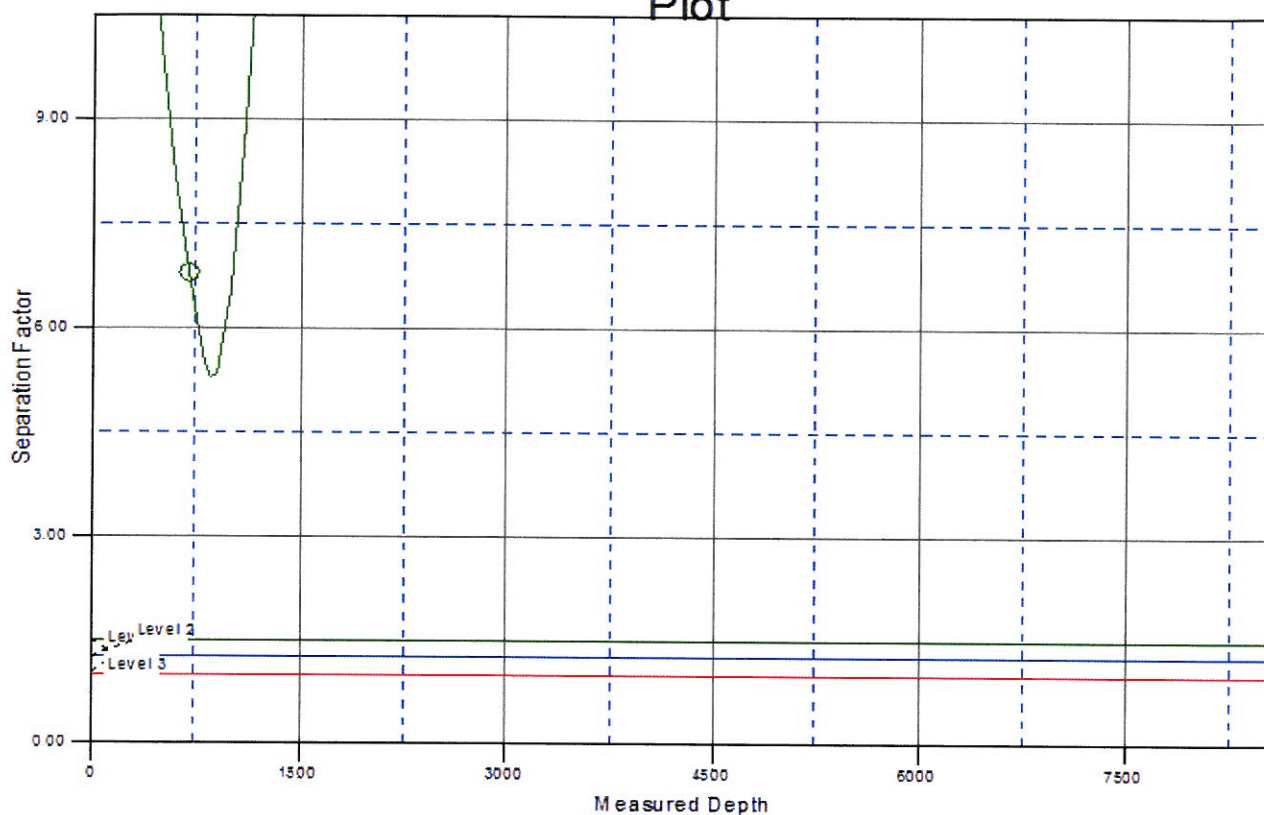
Pratt 23-2D, Wellbore #1, Plan #1 (2-10-11) V0

**Company:** Synergy Resources  
**Project:** SEC.2-T4N-R68W  
**Reference Site:** Pratt 14-2D Pad Sec.2-T4N-R68W  
**Site Error:** 0.0ft  
**Reference Well:** Pratt 24-2D  
**Well Error:** 0.0ft  
**Reference Wellbore:** Wellbore #1  
**Reference Design:** Plan #1 (2-10-11)

**Local Co-ordinate Reference:** Well Pratt 24-2D  
**TVD Reference:** WELL @ 5016.0ft (Original Well Elev)  
**MD Reference:** WELL @ 5016.0ft (Original Well Elev)  
**North Reference:** True  
**Survey Calculation Method:** Minimum Curvature  
**Output errors are at** 2.00 sigma  
**Database:** Landmark  
**Offset TVD Reference:** Offset Datum

Reference Depths are relative to WELL @ 5016.0ft (Original Well Elev) Coordinates are relative to: Pratt 24-2D  
 Offset Depths are relative to Offset Datum  
 Central Meridian is -105.500000 °  
 Coordinate System is US State Plane 1983, Colorado Northern Zone  
 Grid Convergence at Surface is: 0.34°

### Separation Factor Plot



### LEGEND

— Pratt 23-2D, Wellbore #1, Plan #1 (2-10-11) V0