

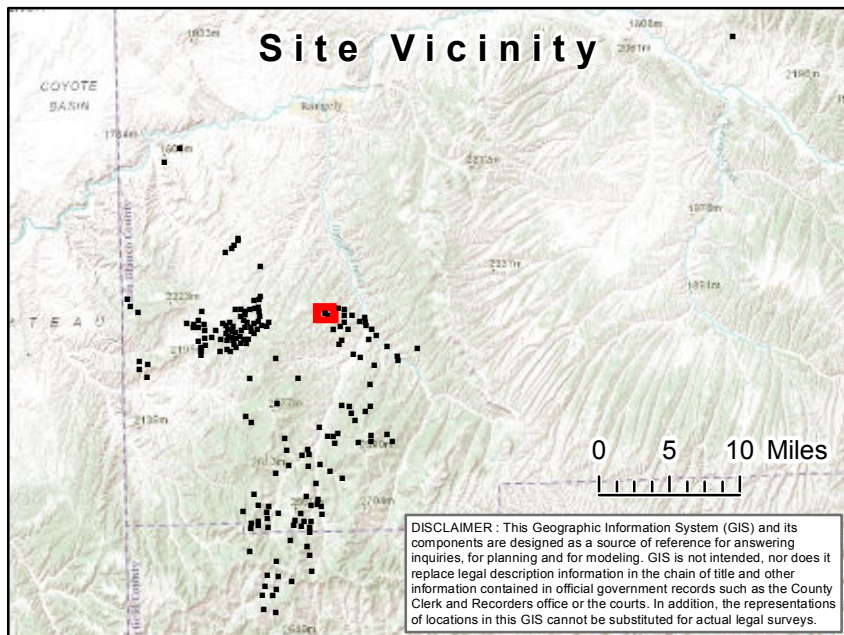
API #: 05-103-08251

Rem #: 4477

7-18 Cathedral Federal (05-103-08251)

18-14 Cathedral Federal (05-103-09730)

API #: 05-103-08251	Land Type: Rangeland	Receptor Name: Bull Draw
Legal: NW SW, Sec.18, T2S R101W	Soil Series/Map Symbol:CO685, 74	Receptor Distance: 142 Feet
Sensitive Area (Y/N): Yes	Altitude:6000 Feet	Receptor Type: Intermittent/Ephemeral



Aerial Site Detail Map

Location:
7-18 Cathedral Federal (05-103-08251)
Encana Oil and Gas (USA) Inc.

Legend

- Encana Wells
- Roads

PLSS

- Township
- Section
- Direction to receiving waters

Hydrography

- Gauging Station
- Spring/Seep
- Water Intake/Outflow
- Waterfall
- Water Well
- Lake/Pond
- Perennial Stream
- Intermittent/Ephemeral Stream
- Ditch/Canal/Aqueduct
- Stream Connector
- Artificial Flow Path
- 500' Hydrography Buffer



0 250 500 Feet

