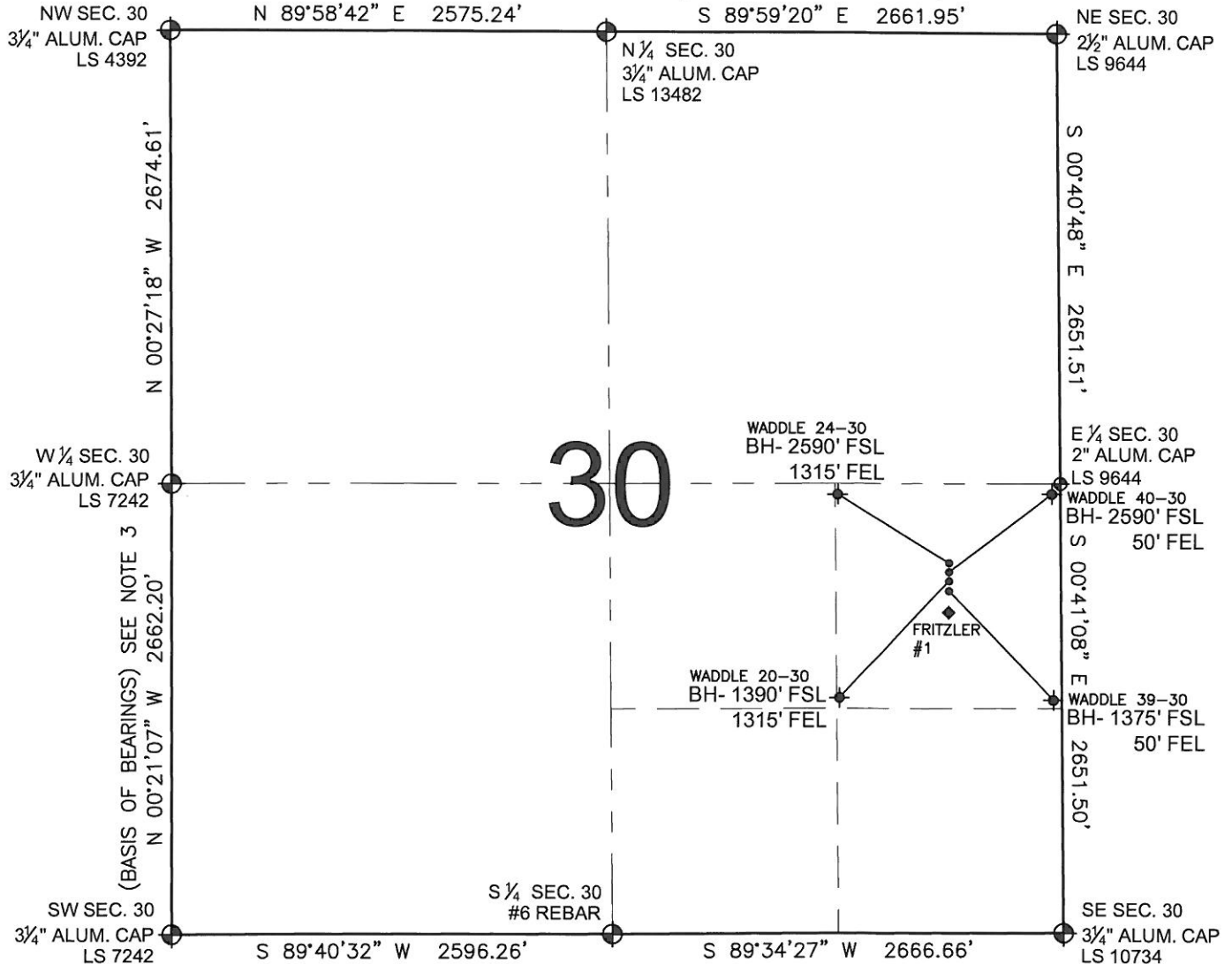


# PAD DRAWING - WADDLE 4 PAD

SECTION 30, TOWNSHIP 4 NORTH, RANGE 66 WEST, 6TH P.M.



## LEGEND

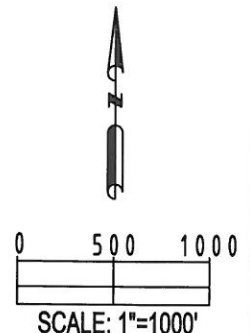
- ⊕ = EXISTING MONUMENT
- ⬢ = PROPOSED WELL
- ⬢ = BOTTOM HOLE
- ⬢ = EXISTING WELL
- BH= BOTTOM HOLE

## NOTES:

- THIS SURVEY WAS DONE BY GPS METHODS AND CONFORMS TO THE MINIMUM STANDARDS SET BY THE C.O.G.C.C., RULE NO. 215
- ELEVATIONS SHOWN AT THE WELL HEAD, AS WELL AS HORIZONTAL CONTROL, ARE BASED ON GPS-RTK VALUES DERIVED FROM DOING 2-HOUR STATIC GPS SESSIONS AND REDUCTIONS USING O.P.U.S. SOLUTIONS.  
VERTICAL = NAVD88; HORIZONTAL = NAD83/92
- THE BEARINGS SHOWN HEREON ARE BASED ON GPS OBSERVATIONS BETWEEN THE MONUMENTS SHOWN HEREON AS FOUND ON THE FIELD DATE BELOW.
- DISTANCES SHOWN ARE AT GROUND LEVEL, AS MEASURED IN THE FIELD, WITH TIES TO WELLS MEASURED AT A PERPENDICULAR TO SECTION LINES.

## NOTES:

- WADDLE 24-30 TO BE AT 2186' FSL, 658' FEL.
- BOTTOM HOLE AT 2590' FSL & 1315' FEL.
- WADDLE 40-30 TO BE AT 2169' FSL, 658' FEL.
- BOTTOM HOLE AT 2590' FSL & 50' FEL.
- WADDLE 20-30 TO BE AT 2153' FSL, 658' FEL.
- BOTTOM HOLE AT 1390' FSL & 1315' FEL.
- WADDLE 39-30 TO BE AT 2137' FSL, 658' FEL.
- BOTTOM HOLE AT 1375' FSL & 50' FEL.
- FRITZLER #1 IS 1987' FSL, 659' FEL.



REVISIONS		PREPARED BY:  <b>PFS</b> Petroleum Field Services, LLC 1801 W. 13th Ave. Denver, CO 80204
INITIAL	DATE	

KERR-MCGEE OIL & GAS ONSHORE LP

FIELD DATE: 01-14-11	PAD NAME: WADDLE 4 PAD
DRAWING DATE: 01-14-11	SURFACE LOCATION:
BY: SMF	WELD COUNTY, COLORADO NE 1/4 SE 1/4, SEC. 30, T4N, R66W