

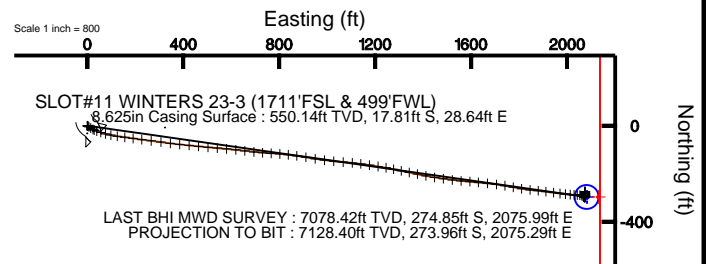
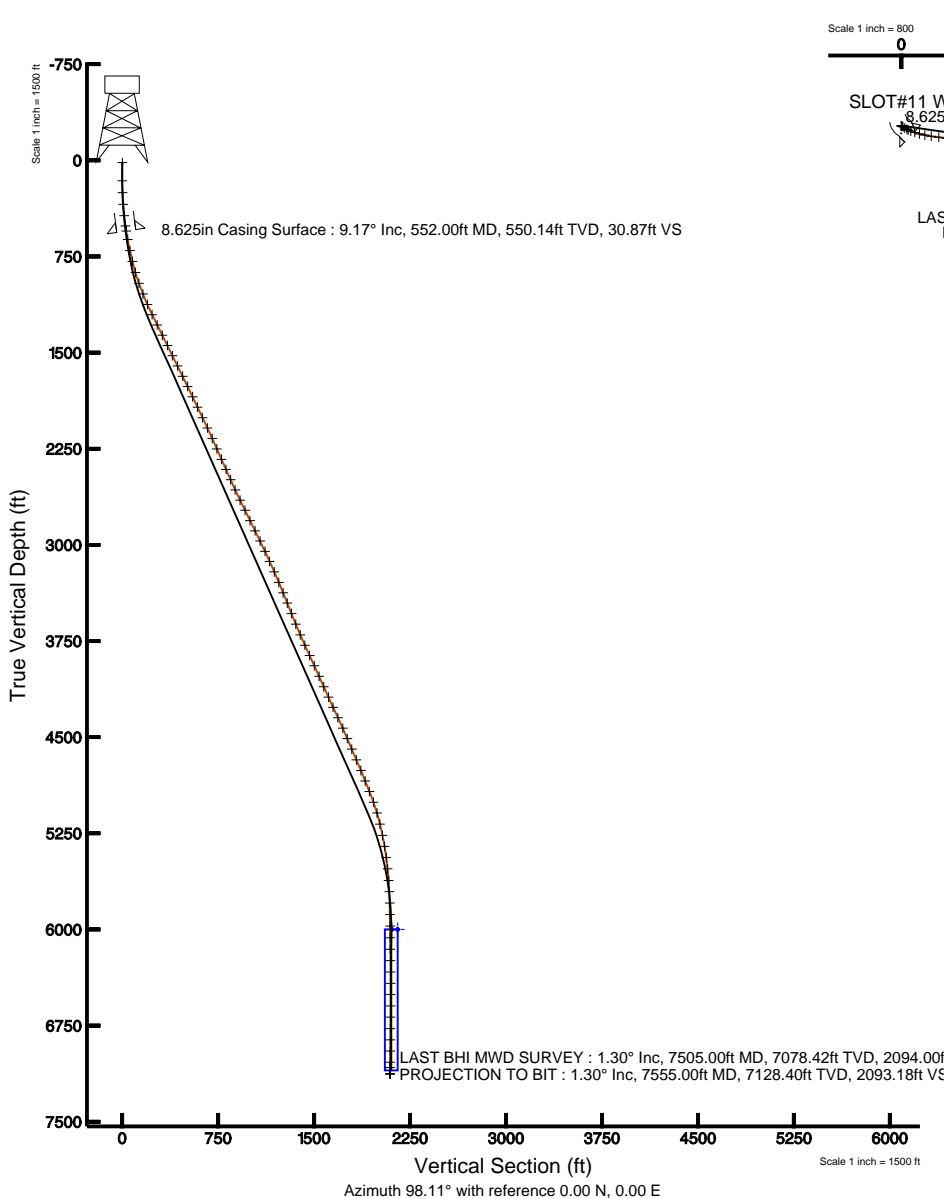


KERR MCGEE OIL & GAS ONSHORE LP

Location: COLORADO Slot: SLOT#11 WINTERS 23-3 (1711'FSL & 499'FWL)
Field: WELD COUNTY (KERR MCGEE) Well: WINTERS 23-3
Facility: SEC.03-T5N-R65W Wellbore: WINTERS 23-3 PWB



Plot reference wellpath is WINTERS 23-3 (REV-A.0) PWP	
True vertical depths are referenced to XTREME 6 (RKB)	Grid System: NAD83 / Lambert Colorado State Planes, Northern Zone (501), US feet
Measured depths are referenced to XTREME 6 (RKB)	North Reference: True north
XTREME 6 (RKB) to Mean Sea Level: 4648 feet	Scale: True distance
Mean Sea Level to Mud line (Facility: SEC.03-T5N-R65W): 0 feet	Depths are in feet
Coordinates are in feet referenced to Slot	Created by: cookdawn on 2/3/2011



BGM (1945.0 to 2012.0) Dip: 67.12° Field: 53232.8 nT
Magnetic North is 8.84 degrees East of True North (at 12/17/2010)

To correct azimuth from Magnetic to True add 8.84 degrees
For example: if the Magnetic North Azimuth = 90 degs, then the Grid North Azimuth = 90 + 8.84 = 98.84



Actual Wellpath Report

WINTERS 23-3 AWP

Page 1 of 5



INTEQ

REFERENCE WELLPATH IDENTIFICATION

Operator	KERR MCGEE OIL & GAS ONSHORE LP	Slot	SLOT#11 WINTERS 23-3 (1711'FSL & 499'FWL)
Area	COLORADO	Well	WINTERS 23-3
Field	WELD COUNTY (KERR MCGEE)	Wellbore	WINTERS 23-3 AWB
Facility	SEC.03-T5N-R65W		

REPORT SETUP INFORMATION

Projection System	NAD83 / Lambert Colorado State Planes, Northern Zone (501), US feet	Software System	WellArchitect® 2.0
North Reference	True	User	Cookdanm
Scale	0.999962	Report Generated	2/3/2011 at 12:00:54 PM
Convergence at slot	0.54° East	Database/Source file	Denver Server/WINTERS_23-3_AWB.xml

WELLPATH LOCATION

	Local coordinates		Grid coordinates		Geographic coordinates	
	North[ft]	East[ft]	Easting[USft]	Northing[USft]	Latitude	Longitude
Slot Location	-1530.85	-43.43	3234664.84	1399051.28	40°25'32.650"N	104°39'25.546"W
Facility Reference Pt			3234693.72	1400582.41	40°25'47.777"N	104°39'24.984"W
Field Reference Pt			3197771.84	1268891.29	40°04'09.600"N	104°47'36.000"W

WELLPATH DATUM

Calculation method	Minimum curvature	XTREME 6 (RKB) to Facility Vertical Datum	4648.00ft
Horizontal Reference Pt	Slot	XTREME 6 (RKB) to Mean Sea Level	4648.00ft
Vertical Reference Pt	XTREME 6 (RKB)	Facility Vertical Datum to Mud Line (Facility)	0.00ft
MD Reference Pt	XTREME 6 (RKB)	Section Origin	N 0.00, E 0.00 ft
Field Vertical Reference	Mean Sea Level	Section Azimuth	98.11°



Actual Wellpath Report

WINTERS 23-3 AWP

Page 2 of 5



INTEQ

REFERENCE WELLPATH IDENTIFICATION

Operator	KERR MCGEE OIL & GAS ONSHORE LP	Slot	SLOT#11 WINTERS 23-3 (1711'FSL & 499'FWL)
Area	COLORADO	Well	WINTERS 23-3
Field	WELD COUNTY (KERR MCGEE)	Wellbore	WINTERS 23-3 AWB
Facility	SEC.03-T5N-R65W		

WELLPATH DATA (87 stations) † = interpolated/extrapolated station

MD [ft]	Inclination [°]	Azimuth [°]	TVD [ft]	Vert Sect [ft]	North [ft]	East [ft]	DLS [°/100ft]	Comments
0.00†	0.000	178.300	0.00	0.00	0.00	0.00	0.00	
16.00	0.000	178.300	16.00	0.00	0.00	0.00	0.00	
158.00	0.400	178.300	158.00	0.08	-0.50	0.01	0.28	
251.00	2.200	125.600	250.97	1.72	-1.86	1.48	2.13	
342.00	5.000	121.000	341.78	6.93	-4.92	6.30	3.09	
431.00	6.700	122.400	430.32	15.23	-9.70	14.00	1.92	
512.00	8.400	118.500	510.61	25.09	-15.05	23.19	2.19	
619.00	10.500	111.100	616.16	41.92	-22.29	39.16	2.26	
708.00	12.600	108.000	703.35	59.38	-28.21	55.96	2.46	
795.00	14.300	104.500	787.96	79.41	-33.84	75.39	2.17	
884.00	16.000	101.300	873.87	102.58	-38.99	98.06	2.13	
973.00	19.700	99.000	958.57	129.84	-43.74	124.92	4.23	
1062.00	22.000	97.800	1041.74	161.51	-48.35	156.25	2.63	
1151.00	23.500	97.800	1123.81	195.93	-53.03	190.35	1.69	
1239.00	25.800	97.400	1203.79	232.63	-57.87	226.73	2.62	
1328.00	27.000	97.400	1283.50	272.20	-62.97	265.97	1.35	
1418.00	27.000	97.400	1363.70	313.05	-68.23	306.49	0.00	
1507.00	26.100	97.800	1443.31	352.83	-73.49	345.92	1.03	
1596.00	26.200	95.700	1523.20	392.04	-78.10	384.87	1.05	
1685.00	26.400	95.700	1602.99	431.44	-82.02	424.11	0.22	
1775.00	26.100	95.700	1683.71	471.21	-85.97	463.71	0.33	
1864.00	26.500	95.700	1763.49	510.60	-89.89	502.95	0.45	
1953.00	25.700	93.600	1843.42	549.68	-93.07	541.97	1.37	
2043.00	25.100	96.000	1924.72	588.21	-96.29	580.43	1.32	
2134.00	25.100	96.000	2007.13	626.79	-100.33	618.82	0.00	
2223.00	25.600	97.100	2087.56	664.88	-104.68	656.68	0.77	
2313.00	24.200	96.400	2169.19	702.76	-109.14	694.31	1.59	
2402.00	23.600	94.600	2250.56	738.78	-112.60	730.19	1.06	
2491.00	24.700	93.600	2331.77	775.10	-115.19	766.51	1.32	
2578.00	24.300	94.300	2410.94	811.08	-117.68	802.50	0.57	
2666.00	23.600	96.400	2491.36	846.75	-121.00	838.07	1.25	
2753.00	24.600	98.100	2570.78	882.27	-125.49	873.30	1.40	
2842.00	26.500	99.500	2651.07	920.65	-131.38	911.23	2.24	
2930.00	26.500	99.200	2729.82	959.91	-137.76	949.97	0.15	
3019.00	25.400	98.100	2809.85	998.85	-143.62	988.47	1.35	
3108.00	26.700	95.300	2889.81	1037.91	-148.16	1027.28	2.01	
3197.00	26.100	95.000	2969.53	1077.43	-151.71	1066.69	0.69	
3286.00	24.400	94.600	3050.02	1115.33	-154.89	1104.52	1.92	
3373.00	24.400	97.800	3129.26	1151.24	-158.77	1140.24	1.52	
3462.00	24.200	99.500	3210.37	1187.85	-164.28	1176.44	0.82	
3552.00	23.200	98.200	3292.78	1224.02	-169.85	1212.19	1.25	
3640.00	21.800	99.500	3374.08	1257.70	-175.02	1245.46	1.69	
3726.00	22.000	103.100	3453.88	1289.71	-181.31	1276.90	1.58	
3814.00	22.200	101.000	3535.41	1322.73	-188.22	1309.27	0.93	
3904.00	22.100	101.300	3618.77	1356.62	-194.78	1342.57	0.17	



Actual Wellpath Report

WINTERS 23-3 AWP

Page 3 of 5



INTEQ

REFERENCE WELLPATH IDENTIFICATION

Operator	KERR MCGEE OIL & GAS ONSHORE LP	Slot	SLOT#11 WINTERS 23-3 (1711'FSL & 499'FWL)
Area	COLORADO	Well	WINTERS 23-3
Field	WELD COUNTY (KERR MCGEE)	Wellbore	WINTERS 23-3 AWB
Facility	SEC.03-T5N-R65W		

WELLPATH DATA (87 stations)

MD [ft]	Inclination [°]	Azimuth [°]	TVD [ft]	Vert Sect [ft]	North [ft]	East [ft]	DLS [°/100ft]	Comments
3994.00	23.400	101.300	3701.77	1391.37	-201.60	1376.69	1.44	
4083.00	24.400	101.300	3783.14	1427.37	-208.66	1412.05	1.12	
4171.00	24.900	99.900	3863.12	1464.03	-215.41	1448.13	0.87	
4259.00	24.500	97.400	3943.07	1500.80	-220.95	1484.47	1.27	
4350.00	24.500	97.800	4025.87	1538.53	-225.94	1521.88	0.18	
4439.00	24.300	94.600	4106.93	1575.27	-229.91	1558.42	1.50	
4528.00	24.500	94.600	4187.98	1611.96	-232.86	1595.06	0.22	
4615.00	24.400	96.000	4267.18	1647.93	-236.18	1630.92	0.68	
4705.00	25.200	96.400	4348.88	1685.66	-240.26	1668.45	0.91	
4794.00	24.900	97.100	4429.51	1723.33	-244.69	1705.87	0.47	
4883.00	23.000	99.200	4510.84	1759.45	-249.79	1741.63	2.34	
4973.00	22.800	102.400	4593.75	1794.42	-256.34	1776.02	1.40	
5064.00	23.200	98.500	4677.52	1829.93	-262.78	1810.97	1.73	
5154.00	23.200	96.000	4760.25	1865.37	-267.25	1846.13	1.09	
5243.00	21.800	96.400	4842.47	1899.41	-270.93	1879.99	1.58	
5331.00	21.800	97.100	4924.18	1932.08	-274.77	1912.44	0.30	
5421.00	19.900	97.100	5008.28	1964.11	-278.73	1944.23	2.11	
5509.00	16.100	98.100	5091.96	1991.29	-282.30	1971.18	4.33	
5599.00	13.500	95.300	5178.96	2014.27	-285.03	1994.00	3.00	
5689.00	11.600	96.400	5266.81	2033.81	-287.01	2013.46	2.13	
5776.00	10.000	92.200	5352.27	2050.07	-288.27	2029.70	2.05	
5864.00	7.700	92.000	5439.21	2063.53	-288.77	2043.23	2.61	
5953.00	5.900	97.800	5527.58	2074.03	-289.60	2053.72	2.16	
6044.00	4.700	109.400	5618.20	2082.37	-291.47	2061.87	1.76	
6132.00	3.000	134.000	5706.00	2087.77	-294.27	2066.93	2.65	
6221.00	1.900	124.200	5794.92	2090.98	-296.72	2069.82	1.32	
6310.00	0.500	87.200	5883.90	2092.69	-297.53	2071.43	1.72	
6401.00	0.500	122.400	5974.89	2093.44	-297.72	2072.16	0.33	
6491.00	0.400	145.600	6064.89	2094.01	-298.19	2072.67	0.23	
6581.00	0.800	138.600	6154.89	2094.70	-298.92	2073.26	0.45	
6670.00	1.100	102.400	6243.87	2096.02	-299.57	2074.51	0.74	
6759.00	1.300	41.500	6332.86	2097.43	-299.00	2076.01	1.38	
6848.00	2.200	14.500	6421.82	2098.18	-296.59	2077.11	1.35	
6935.00	2.800	358.600	6508.74	2098.01	-292.85	2077.48	1.05	
7024.00	2.600	358.400	6597.64	2097.31	-288.66	2077.37	0.22	
7111.00	2.300	353.000	6684.56	2096.52	-284.95	2077.10	0.43	
7201.00	1.800	350.600	6774.50	2095.63	-281.77	2076.65	0.56	
7288.00	1.400	357.900	6861.47	2095.03	-279.36	2076.38	0.52	
7376.00	1.200	2.860	6949.44	2094.75	-277.36	2076.39	0.26	
7463.00	1.100	353.000	7036.42	2094.45	-275.62	2076.34	0.25	
7505.00	1.300	321.700	7078.42	2094.00	-274.85	2075.99	1.61	LAST BHI MWD SURVEY
7555.00	1.300	321.700	7128.40	2093.18	-273.96	2075.29	0.00	PROJECTION TO BIT



Actual Wellpath Report

WINTERS 23-3 AWP

Page 4 of 5



INTEQ

REFERENCE WELLPATH IDENTIFICATION

Operator	KERR MCGEE OIL & GAS ONSHORE LP	Slot	SLOT#11 WINTERS 23-3 (1711'FSL & 499'FWL)
Area	COLORADO	Well	WINTERS 23-3
Field	WELD COUNTY (KERR MCGEE)	Wellbore	WINTERS 23-3 AWB
Facility	SEC.03-T5N-R65W		

HOLE & CASING SECTIONS Ref Wellbore: WINTERS 23-3 AWB Ref Wellpath: WINTERS 23-3 AWP

String/Diameter	Start MD [ft]	End MD [ft]	Interval [ft]	Start TVD [ft]	End TVD [ft]	Start N/S [ft]	Start E/W [ft]	End N/S [ft]	End E/W [ft]
12.25in Open Hole	0.00	567.00	567.00	0.00	564.95	0.00	0.00	-18.83	30.85
8.625in Casing Surface	16.00	552.00	536.00	16.00	550.14	0.00	0.00	-17.81	28.64
7.875in Open Hole	552.00	7555.00	7003.00	550.14	7128.40	-17.81	28.64	-273.96	2075.29

TARGETS

Name	MD [ft]	TVD [ft]	North [ft]	East [ft]	Grid East [srv ft]	Grid North [srv ft]	Latitude	Longitude	Shape
WINTERS 23-3 BHL ON PLAT (1370'FSL & 2585'FWL, REV-1)		6000.00	-296.83	2085.92	3236753.40	1398774.30	40°25'29.716"N	104°38'58.574"W	point
WINTERS 23-3 GEO TARGET 50' RADIUS (1370'FSL & 2590'FWL, REV-2)		6000.00	-296.83	2081.92	3236749.40	1398774.26	40°25'29.716"N	104°38'58.626"W	circle
WINTERS 23-3 HARDLINE 50'E OF GEO TARGET		6000.00	-296.83	2131.92	3236799.40	1398774.74	40°25'29.716"N	104°38'57.980"W	point

WELLPATH COMPOSITION Ref Wellbore: WINTERS 23-3 AWB Ref Wellpath: WINTERS 23-3 AWP

Start MD [ft]	End MD [ft]	Positional Uncertainty Model	Log Name/Comment	Wellbore
16.00	512.00	NaviTrak (Standard)	BHI MWD SURVEY 12.25 HOLE <158-512>	WINTERS 23-3 AWB
512.00	7505.00	NaviTrak (Standard)	BHI MWD SURVEY 7.875 HOLE <619-7505>	WINTERS 23-3 AWB
7505.00	7555.00	Blind Drilling (std)	Projection to bit	WINTERS 23-3 AWB



Actual Wellpath Report

WINTERS 23-3 AWP

Page 5 of 5



INTEQ

REFERENCE WELLPATH IDENTIFICATION

Operator	KERR MCGEE OIL & GAS ONSHORE LP	Slot	SLOT#11 WINTERS 23-3 (1711'FSL & 499'FWL)
Area	COLORADO	Well	WINTERS 23-3
Field	WELD COUNTY (KERR MCGEE)	Wellbore	WINTERS 23-3 AWB
Facility	SEC.03-T5N-R65W		

WELLPATH COMMENTS

MD [ft]	Inclination [°]	Azimuth [°]	TVD [ft]	Comment
7505.00	1.300	321.700	7078.42	LAST BHI MWD SURVEY
7555.00	1.300	321.700	7128.40	PROJECTION TO BIT