



Kerr-McGee Oil & Gas Onshore LP

February 14, 2011

Department of Natural Resources
Oil and Gas Conservation Commission
The Chancery Building
1120 Lincoln St., Suite 801
Denver, CO 80203

Re: **20 Day Certification Letter - 318A-e**
JOHNSTOWN FARMS 22-9
Township 4 North, Range 67 West, Section 9: NE/4SW/4
Unit Spacing: 04N-67W-9 S/2NW/4; N/2 SW/4
Weld County, Colorado

Ladies/Gentlemen:

Kerr-McGee Oil and Gas Onshore LP ("KMG") hereby certifies to the Director that a twenty (20) day notice has been given by certified mail to all owners in the proposed wellbore spacing unit. We have not received any objections to such well location, proposed spacing unit, or additional producing formation. KMG hereby requests the Director to approve the boundary well.

If you have any questions or issues regarding this permit, please contact Cheryl Light at (720) 929-6461.

Very truly yours,

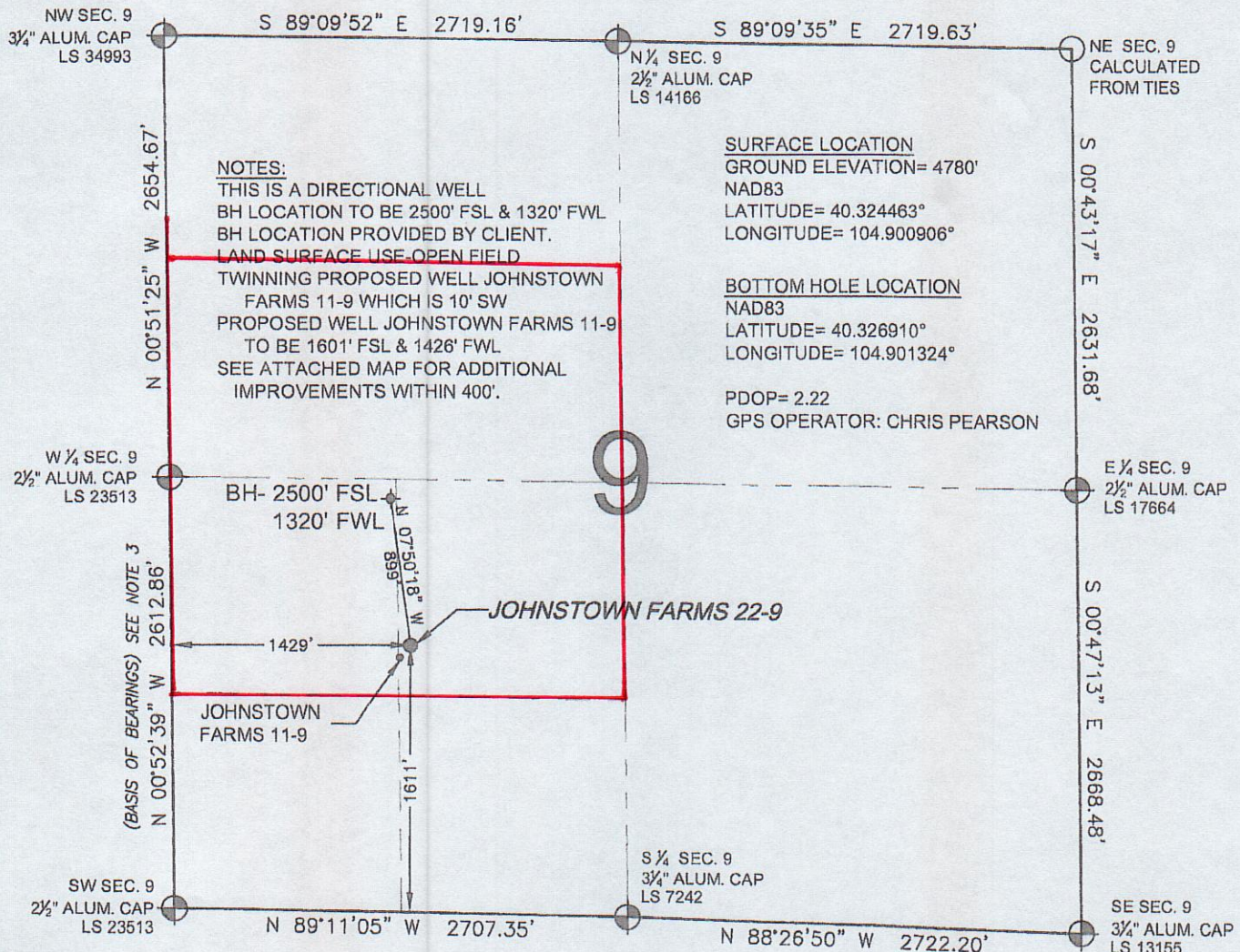
Kerr-McGee Oil and Gas Onshore LP

Rebecca Heim
Regulatory Analyst II

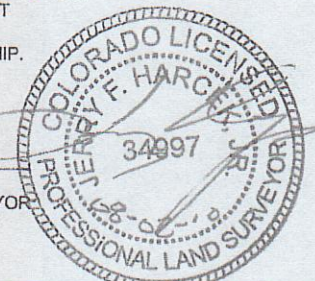
Enclosure

WELL LOCATION CERTIFICATE: JOHNSTOWN FARMS 22-9

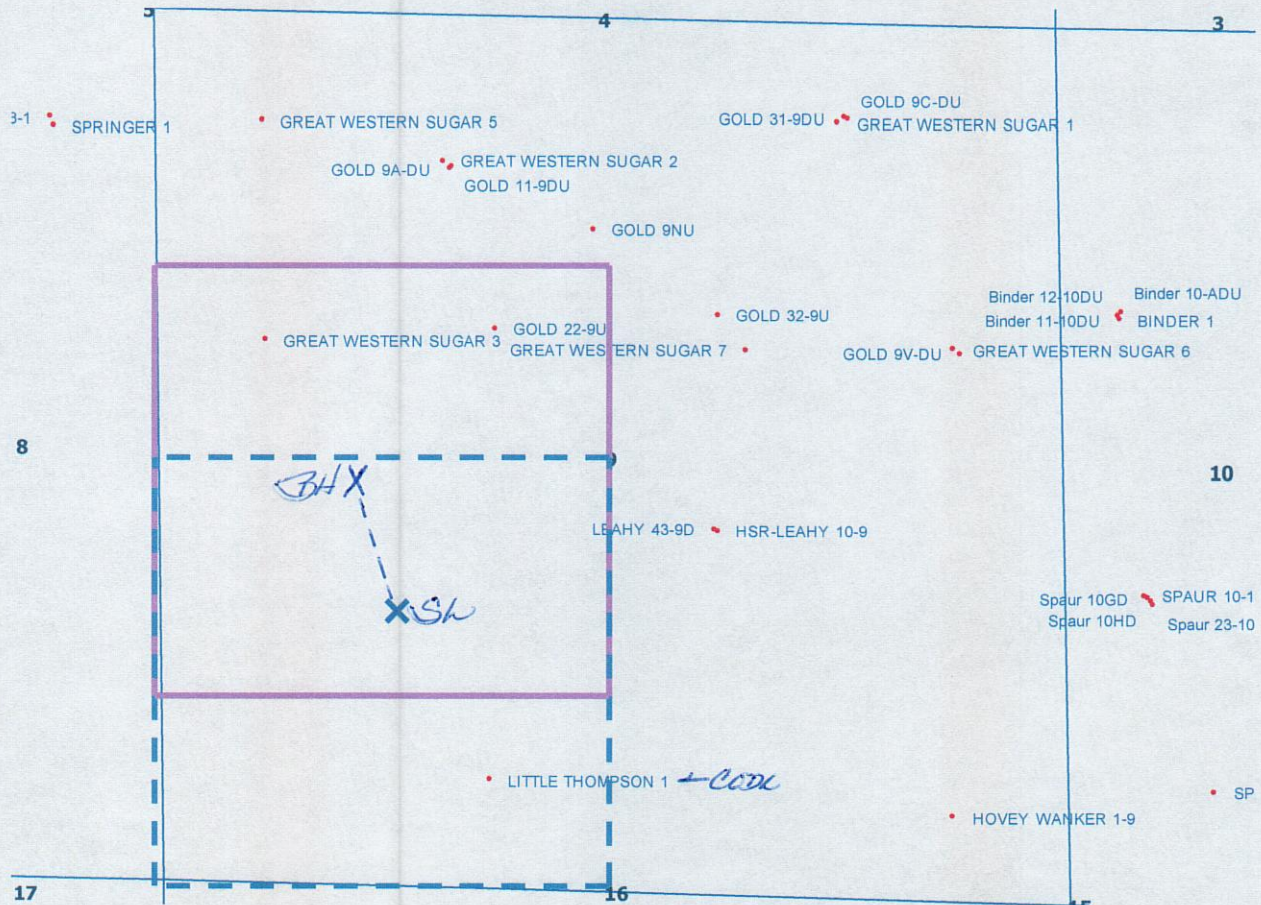
SECTION 9, TOWNSHIP 4 NORTH, RANGE 67 WEST, 6TH P.M.



PREPARED BY: PFS Petroleum Field Services, LLC 1824 W. 12th Ave. Denver, CO 80204	FIELD DATE: 06-11-10	WELL NAME: JOHNSTOWN FARMS 22-9
	DRAWING DATE: 07-26-10	SURFACE LOCATION: WELD COUNTY, COLORADO
	BY: TBS	NE 1/4 SW 1/4, SEC. 9, T4N, R67W



JOHNSTOWN FARMS 22-9 NESW Sec. 9 T4N-R67W



LEGEND



Proposed 160 acre Spacing Unit (Solid line).



Bottom Hole Located NW/4SW/4, Sec. 9-T4N-R67W (Dashed line).

This 1/4 Section has less than 8 bottom hole wells producing from the Codell, Niobrara & J Sand Formations.