



August 25, 2010

CERTIFIED MAILJohnstown Farms LLC
ATTN: Barbara A. Horst
PO BOX 2030
Austin, TX 78768

FORESTAR GROUP

SEP 02 2010

Re: Notice of Intent to Conduct Surface Operations (Facilities)
Please See Attached Sheet

Ladies and Gentlemen:

The Colorado Oil and Gas Conservation Commission ("COGCC") has adopted guidelines and procedures regarding oil and gas activities affecting the surface. These rules stipulate that an affected surface owner must be given advance notice in writing by an operator at least thirty (30) days prior to drilling an oil and gas well.

Kerr-McGee Oil and Gas OnShore LP ("KMG") intends to begin operations to drill the above captioned oil and gas well(s) upon approval of title, receipt of permits from the COGCC prior to March 31, 2011. As the surface owner, it is your responsibility to notify the tenant farmer, if applicable, of this proposed operation.

A site diagram of the proposed location of the well and any associated roads and production facilities is enclosed. Should you have any questions and/or concerns, please contact me at (303) 655-4350 or my cell at (970) 590-6249.

Very truly yours,
KERR-MCGEE OIL AND GAS ONSHORE LPDavid Bell
Landman

I/we waive the 30 day notice referenced above and approve of the operations commencing upon KMG's receipt of the drilling permit.

VPLAN:cl
Enclosure

FORESTAR MINERALS LLC

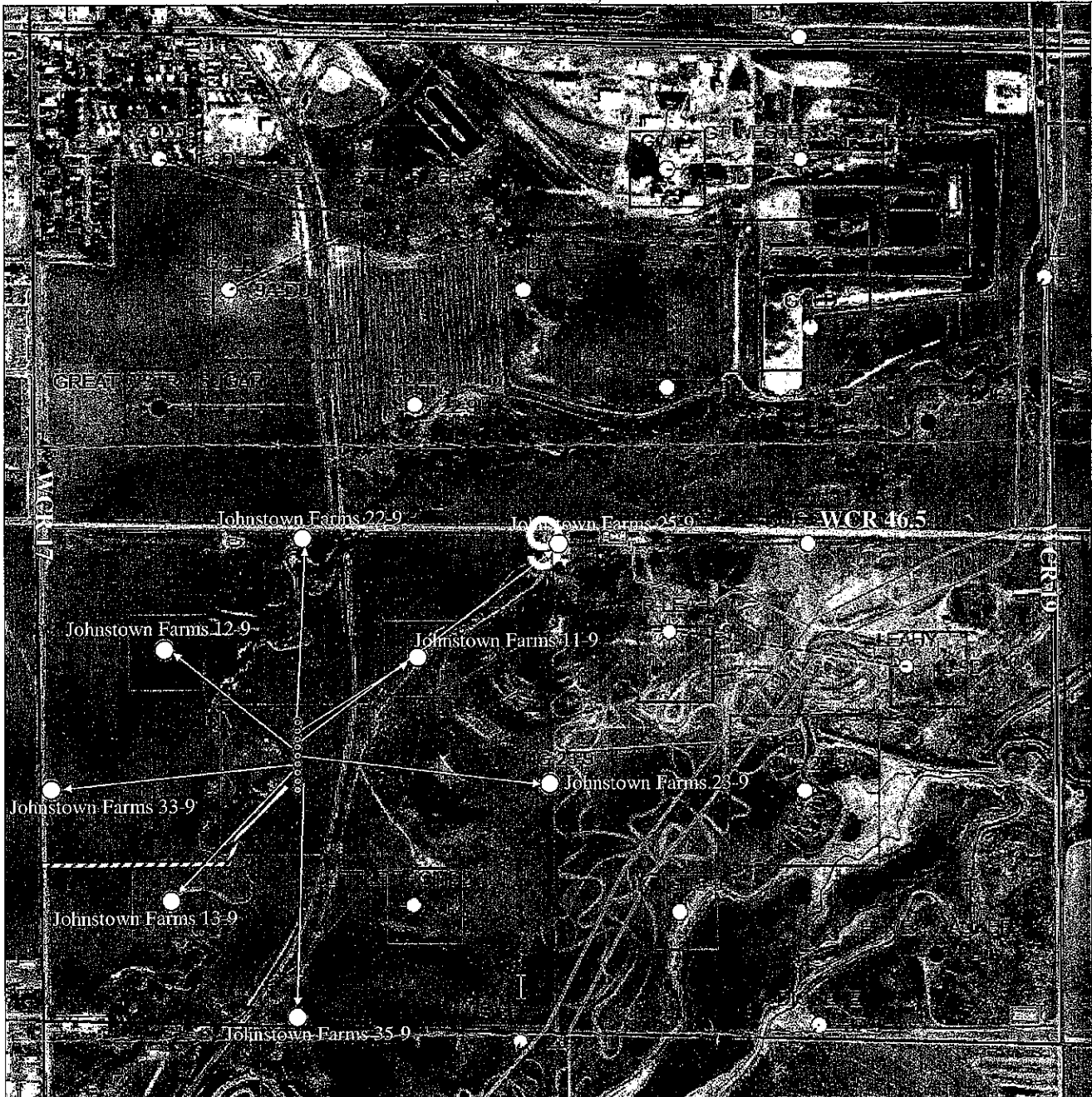
JOHNSTOWN FARMS 19-9 NE/4SW/4
JOHNSTOWN FARMS 23-9 NE/4SW/4
JOHNSTOWN FARMS 22-9 NE/4SW/4
JOHNSTOWN FARMS 11-9 NE/4SW/4
JOHNSTOWN FARMS 25-9 NE/4SW/4
JOHNSTOWN FARMS 12-9 NE/4SW/4
JOHNSTOWN FARMS 33-9 NE/4SW/4
JOHNSTOWN FARMS 13-9 NE/4SW/4
JOHNSTOWN FARMS ~~29-9 NE/4SW/4~~ 35-9 NE/4SW/4
Township 4N, Range 67W, Section 9
Weld County, Colorado



FORESTAR GROUP

SEP 02 2010

ACCESS ROAD
(2007 AERIAL)



This aerial photo and all notations and depictions thereon is provided as a courtesy and is intended to be used for general reference purposes only. Kerr-McGee/landmark expressly disclaims any and all representations or warranties regarding the accuracy or the completeness of the information appearing on this aerial photo and any reliance on it for any purpose whatsoever is at the sole risk of the party so relying.



- Access Road
- KMG Gathering Line
- Duke Pipeline
- RGSI Pipeline
- Proposed Flowline
- Legal Drilling Window
- Exist Battery Location
- New Battery Location
- Proposed Wellhead
- Bottomhole Location
- Potential Drill Sites



Aerial Photo
Sec. 9-T4N-R67W
Weld County, CO

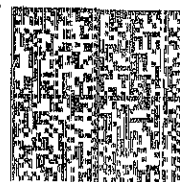
Author:
Teddy Ruampant

Edited By:
Dave Haertel

Last Edited:
8/23/2010



KERR-McGEE OIL & GAS ONSI
1099 18TH STREET • DENVER, C
ATTN: Carrie Walker



Postnet

049J82042732

\$05.540

08/25/2010

Mailed From 80202

US POSTAGE



CERTIFIED MAIL™

7010 0290 0001 4316 2181

Johnstown Farms LLC
ATTN: Barbara A. Horst
PO BOX 2030
Austin, TX 78768

FORESTAR GROUP

SEP 02 2010

757682030 8030

