



ANADARKO PETROLEUM CORP.

ANADARKO COLORADO NORTHERN ZONE NAD 83

WELD_Johnstown Farms

Johnstown Farms 11-9

Johnstown Farms 11-9

Plan: Johnstown Farms 11-9 (wp01)

Standard Planning Report

29 September, 2010



Johnstown Farms 11-9
ANADARKO COLORADO NORTHERN ZONE NAD 83
40° 19' 27.969 N
104° 54' 3.290 W



Johnstown Farms 11-9 (wp01) (Johnstown Farms 11-9/Johnstown Farms 11-9)

Created By: Jason Daguitera

REFERENCE INFORMATION

Co-ordinate (N/E) Reference: Well Johnstown Farms 11-9, True North
Vertical (TVD) Reference: WELL @ 4780.0ft (Original Well Elev)
Section (VS) Reference: Slot - (0.0N, 0.0E)
Measured Depth Reference: WELL @ 4780.0ft (Original Well Elev)
Calculation Method: Minimum Curvature

WELL DETAILS: Johnstown Farms 11-9

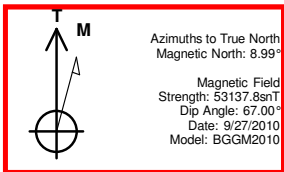
+N/-S	+E/-W	Northing	Ground Level: 4780.0 Easting	Latitude	Longitude	Slot
0.0	0.0	1361597.12	3167036.36	40° 19' 27.969 N	104° 54' 3.290 W	

CASING DETAILS

TVD	MD	Name	Size
750.0	751.9	9 5/8"	9-5/8

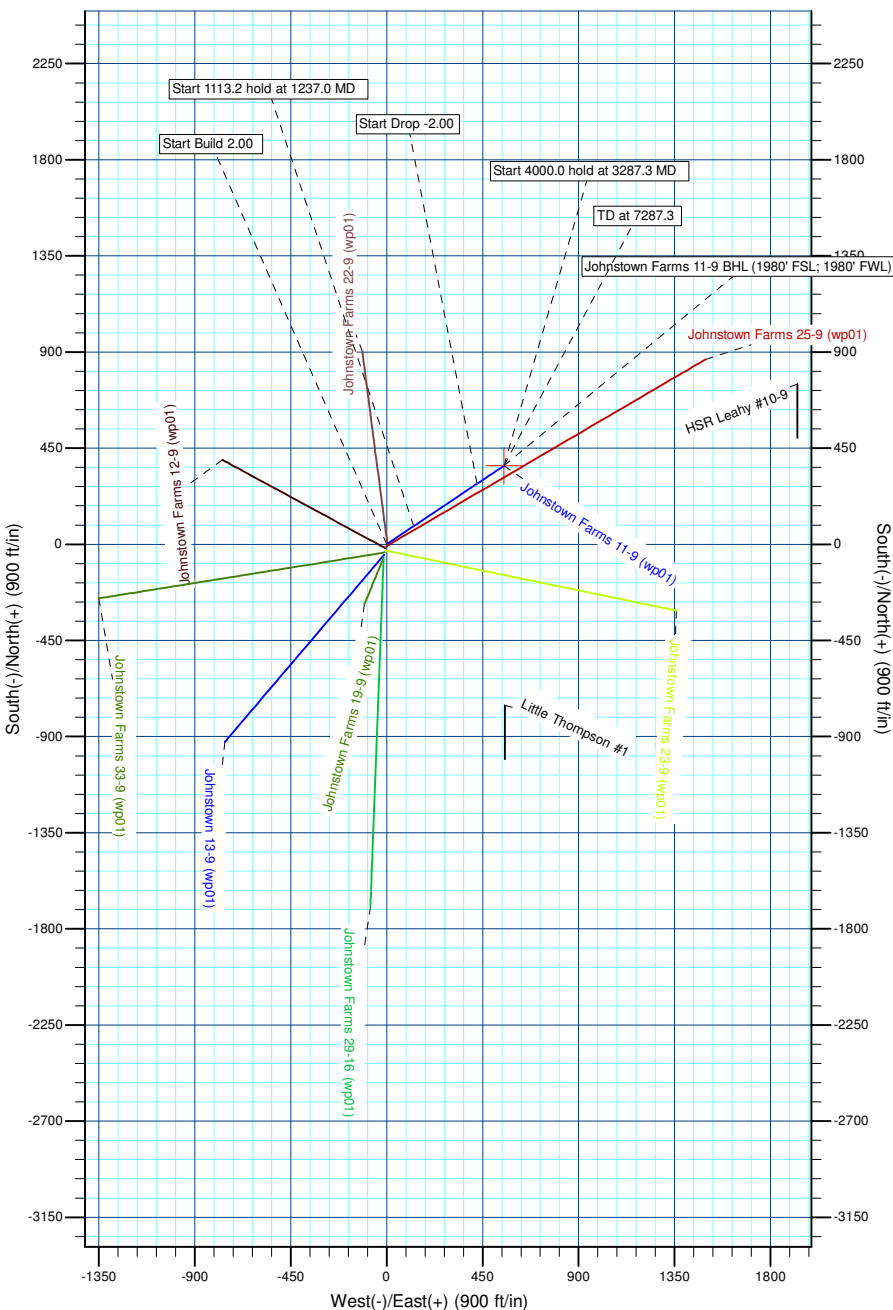
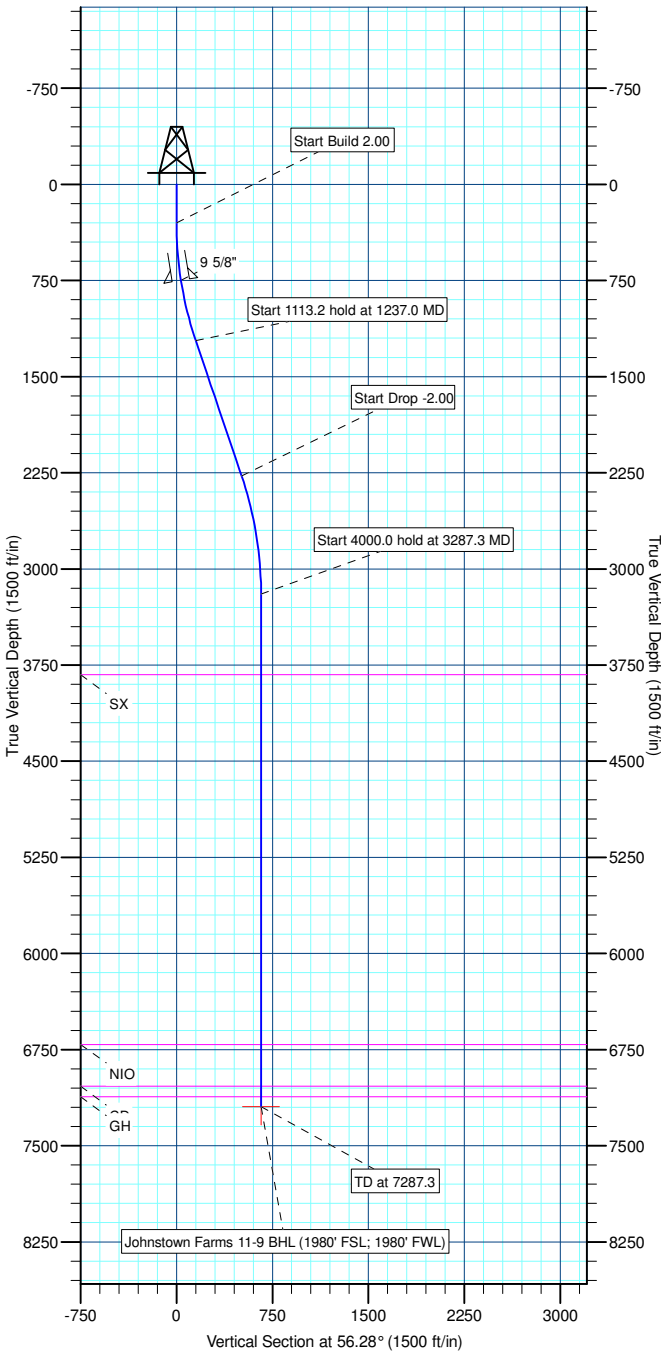
SECTION DETAILS

Sec	MD	Inc	Azi	TVD	+N/-S	+E/-W	DLeg	TFace	VSec	Target
1	0.0	0.00	0.00	0.0	0.0	0.0	0.00	0.00	0.0	
2	300.0	0.00	0.00	300.0	0.0	0.0	0.00	0.00	0.0	
3	1237.0	18.74	56.28	1220.4	84.3	126.3	2.00	56.28	151.9	
4	2350.2	18.74	56.28	2274.6	282.9	423.8	0.00	0.00	509.5	
5	3287.3	0.00	0.00	3195.0	367.2	550.1	2.00	180.00	661.4	
6	7287.3	0.00	0.00	7195.0	367.2	550.1	0.00	0.00	661.4	Johnstown Farms 11-9 BHL (1980' FSL; 1980' FWL)



WELLBORE TARGET DETAILS (LAT/LONG)

Name	TVD	+N/-S	+E/-W	Latitude	Longitude	Shape
Johnstown Farms 11-9 BHL (1980' FSL; 1980' FWL)	7195.0	367.2	550.1	40° 19' 31.598 N	104° 53' 56.188 W	Point



Database:	EDM 2003.21 Single User Db	Local Co-ordinate Reference:	Well Johnstown Farms 11-9
Company:	ANADARKO PETROLEUM CORP.	TVD Reference:	WELL @ 4780.0ft (Original Well Elev)
Project:	ANADARKO COLORADO NOTHERN ZONE NAD 83	MD Reference:	WELL @ 4780.0ft (Original Well Elev)
Site:	WELD_Johnstown Farms	North Reference:	True
Well:	Johnstown Farms 11-9	Survey Calculation Method:	Minimum Curvature
Wellbore:	Johnstown Farms 11-9		
Design:	Johnstown Farms 11-9 (wp01)		

Project	ANADARKO COLORADO NOTHERN ZONE NAD 83, ROCKIES, ROCKIES		
Map System:	US State Plane 1983	System Datum:	Mean Sea Level
Geo Datum:	North American Datum 1983		
Map Zone:	Colorado Northern Zone		

Site	WELD_Johnstown Farms		
Site Position:		Northing:	1,361,567.94 ft
From:	Lat/Long	Easting:	3,167,029.59 ft
Position Uncertainty:	0.0 ft	Slot Radius:	"
		Latitude:	40° 19' 27.682 N
		Longitude:	104° 54' 3.380 W
		Grid Convergence:	0.39 °

Well	Johnstown Farms 11-9		
Well Position	+N/-S	29.1 ft	Northing:
	+E/-W	7.0 ft	Easting:
Position Uncertainty		0.0 ft	Wellhead Elevation:
			ft
			Latitude:
			40° 19' 27.969 N
			Longitude:
			104° 54' 3.290 W
			Ground Level:
			4,780.0 ft

Wellbore	Johnstown Farms 11-9				
Magnetics	Model Name	Sample Date	Declination (°)	Dip Angle (°)	Field Strength (nT)
	BGGM2010	9/27/2010	8.99	67.00	53,138

Design	Johnstown Farms 11-9 (wp01)			
Audit Notes:				
Version:	Phase:	PLAN	Tie On Depth:	0.0
Vertical Section:	Depth From (TVD) (ft)	+N/-S (ft)	+E/-W (ft)	Direction (°)
	0.0	0.0	0.0	56.28

Plan Sections										
Measured Depth (ft)	Inclination (°)	Azimuth (°)	Vertical Depth (ft)	+N/-S (ft)	+E/-W (ft)	Dogleg Rate (°/100ft)	Build Rate (°/100ft)	Turn Rate (°/100ft)	TFO (°)	Target
0.0	0.00	0.00	0.0	0.0	0.0	0.00	0.00	0.00	0.00	
300.0	0.00	0.00	300.0	0.0	0.0	0.00	0.00	0.00	0.00	
1,237.0	18.74	56.28	1,220.4	84.3	126.3	2.00	2.00	0.00	56.28	
2,350.2	18.74	56.28	2,274.6	282.9	423.8	0.00	0.00	0.00	0.00	
3,287.3	0.00	0.00	3,195.0	367.2	550.1	2.00	-2.00	0.00	180.00	
7,287.3	0.00	0.00	7,195.0	367.2	550.1	0.00	0.00	0.00	0.00	Johnstown Farms 1

Database:	EDM 2003.21 Single User Db	Local Co-ordinate Reference:	Well Johnstown Farms 11-9
Company:	ANADARKO PETROLEUM CORP.	TVD Reference:	WELL @ 4780.0ft (Original Well Elev)
Project:	ANADARKO COLORADO NOTHERN ZONE NAD 83	MD Reference:	WELL @ 4780.0ft (Original Well Elev)
Site:	WELD_Johnstown Farms	North Reference:	True
Well:	Johnstown Farms 11-9	Survey Calculation Method:	Minimum Curvature
Wellbore:	Johnstown Farms 11-9		
Design:	Johnstown Farms 11-9 (wp01)		

Planned Survey									
Measured Depth (ft)	Inclination (°)	Azimuth (°)	Vertical Depth (ft)	+N/-S (ft)	+E/-W (ft)	Vertical Section (ft)	Dogleg Rate (°/100ft)	Build Rate (°/100ft)	Turn Rate (°/100ft)
0.0	0.00	0.00	0.0	0.0	0.0	0.0	0.00	0.00	0.00
100.0	0.00	0.00	100.0	0.0	0.0	0.0	0.00	0.00	0.00
200.0	0.00	0.00	200.0	0.0	0.0	0.0	0.00	0.00	0.00
Start Build 2.00									
300.0	0.00	0.00	300.0	0.0	0.0	0.0	0.00	0.00	0.00
400.0	2.00	56.28	400.0	1.0	1.5	1.7	2.00	2.00	0.00
500.0	4.00	56.28	499.8	3.9	5.8	7.0	2.00	2.00	0.00
600.0	6.00	56.28	599.5	8.7	13.1	15.7	2.00	2.00	0.00
700.0	8.00	56.28	698.7	15.5	23.2	27.9	2.00	2.00	0.00
9 5/8"									
751.9	9.04	56.28	750.0	19.7	29.6	35.6	2.00	2.00	0.00
800.0	10.00	56.28	797.5	24.2	36.2	43.5	2.00	2.00	0.00
900.0	12.00	56.28	895.6	34.8	52.1	62.6	2.00	2.00	0.00
1,000.0	14.00	56.28	993.1	47.2	70.8	85.1	2.00	2.00	0.00
1,100.0	16.00	56.28	1,089.6	61.6	92.3	111.0	2.00	2.00	0.00
1,200.0	18.00	56.28	1,185.3	77.8	116.6	140.2	2.00	2.00	0.00
Start 1113.2 hold at 1237.0 MD									
1,237.0	18.74	56.28	1,220.4	84.3	126.3	151.9	2.00	2.00	0.00
1,300.0	18.74	56.28	1,280.0	95.6	143.1	172.1	0.00	0.00	0.00
1,400.0	18.74	56.28	1,374.7	113.4	169.9	204.2	0.00	0.00	0.00
1,500.0	18.74	56.28	1,469.4	131.2	196.6	236.4	0.00	0.00	0.00
1,600.0	18.74	56.28	1,564.1	149.1	223.3	268.5	0.00	0.00	0.00
1,700.0	18.74	56.28	1,658.8	166.9	250.0	300.6	0.00	0.00	0.00
1,800.0	18.74	56.28	1,753.5	184.7	276.8	332.8	0.00	0.00	0.00
1,900.0	18.74	56.28	1,848.2	202.6	303.5	364.9	0.00	0.00	0.00
2,000.0	18.74	56.28	1,942.9	220.4	330.2	397.0	0.00	0.00	0.00
2,100.0	18.74	56.28	2,037.6	238.3	356.9	429.1	0.00	0.00	0.00
2,200.0	18.74	56.28	2,132.3	256.1	383.6	461.3	0.00	0.00	0.00
2,300.0	18.74	56.28	2,227.0	273.9	410.4	493.4	0.00	0.00	0.00
Start Drop -2.00									
2,350.2	18.74	56.28	2,274.6	282.9	423.8	509.5	0.00	0.00	0.00
2,400.0	17.75	56.28	2,321.9	291.5	436.7	525.1	2.00	-2.00	0.00
2,500.0	15.75	56.28	2,417.6	307.5	460.7	553.9	2.00	-2.00	0.00
2,600.0	13.75	56.28	2,514.3	321.7	481.9	579.4	2.00	-2.00	0.00
2,700.0	11.75	56.28	2,611.8	333.9	500.2	601.4	2.00	-2.00	0.00
2,800.0	9.75	56.28	2,710.1	344.3	515.7	620.1	2.00	-2.00	0.00
2,900.0	7.75	56.28	2,808.9	352.7	528.4	635.3	2.00	-2.00	0.00
3,000.0	5.75	56.28	2,908.2	359.2	538.1	647.0	2.00	-2.00	0.00
3,100.0	3.75	56.28	3,007.9	363.8	545.0	655.3	2.00	-2.00	0.00
3,200.0	1.75	56.28	3,107.8	366.5	549.0	660.1	2.00	-2.00	0.00
Start 4000.0 hold at 3287.3 MD									
3,287.3	0.00	0.00	3,195.0	367.2	550.1	661.4	2.00	-2.00	0.00
3,300.0	0.00	0.00	3,207.7	367.2	550.1	661.4	0.00	0.00	0.00
3,400.0	0.00	0.00	3,307.7	367.2	550.1	661.4	0.00	0.00	0.00
3,500.0	0.00	0.00	3,407.7	367.2	550.1	661.4	0.00	0.00	0.00
3,600.0	0.00	0.00	3,507.7	367.2	550.1	661.4	0.00	0.00	0.00
3,700.0	0.00	0.00	3,607.7	367.2	550.1	661.4	0.00	0.00	0.00
3,800.0	0.00	0.00	3,707.7	367.2	550.1	661.4	0.00	0.00	0.00
3,900.0	0.00	0.00	3,807.7	367.2	550.1	661.4	0.00	0.00	0.00
SX									
3,918.3	0.00	0.00	3,826.0	367.2	550.1	661.4	0.00	0.00	0.00
4,000.0	0.00	0.00	3,907.7	367.2	550.1	661.4	0.00	0.00	0.00

Database:	EDM 2003.21 Single User Db	Local Co-ordinate Reference:	Well Johnstown Farms 11-9
Company:	ANADARKO PETROLEUM CORP.	TVD Reference:	WELL @ 4780.0ft (Original Well Elev)
Project:	ANADARKO COLORADO NOTHERN ZONE NAD 83	MD Reference:	WELL @ 4780.0ft (Original Well Elev)
Site:	WELD_Johnstown Farms	North Reference:	True
Well:	Johnstown Farms 11-9	Survey Calculation Method:	Minimum Curvature
Wellbore:	Johnstown Farms 11-9		
Design:	Johnstown Farms 11-9 (wp01)		

Planned Survey										
Measured Depth (ft)	Inclination (°)	Azimuth (°)	Vertical Depth (ft)	+N/-S (ft)	+E/-W (ft)	Vertical Section (ft)	Dogleg Rate (°/100ft)	Build Rate (°/100ft)	Turn Rate (°/100ft)	
4,100.0	0.00	0.00	4,007.7	367.2	550.1	661.4	0.00	0.00	0.00	
4,200.0	0.00	0.00	4,107.7	367.2	550.1	661.4	0.00	0.00	0.00	
4,300.0	0.00	0.00	4,207.7	367.2	550.1	661.4	0.00	0.00	0.00	
4,400.0	0.00	0.00	4,307.7	367.2	550.1	661.4	0.00	0.00	0.00	
4,500.0	0.00	0.00	4,407.7	367.2	550.1	661.4	0.00	0.00	0.00	
4,600.0	0.00	0.00	4,507.7	367.2	550.1	661.4	0.00	0.00	0.00	
4,700.0	0.00	0.00	4,607.7	367.2	550.1	661.4	0.00	0.00	0.00	
4,800.0	0.00	0.00	4,707.7	367.2	550.1	661.4	0.00	0.00	0.00	
4,900.0	0.00	0.00	4,807.7	367.2	550.1	661.4	0.00	0.00	0.00	
5,000.0	0.00	0.00	4,907.7	367.2	550.1	661.4	0.00	0.00	0.00	
5,100.0	0.00	0.00	5,007.7	367.2	550.1	661.4	0.00	0.00	0.00	
5,200.0	0.00	0.00	5,107.7	367.2	550.1	661.4	0.00	0.00	0.00	
5,300.0	0.00	0.00	5,207.7	367.2	550.1	661.4	0.00	0.00	0.00	
5,400.0	0.00	0.00	5,307.7	367.2	550.1	661.4	0.00	0.00	0.00	
5,500.0	0.00	0.00	5,407.7	367.2	550.1	661.4	0.00	0.00	0.00	
5,600.0	0.00	0.00	5,507.7	367.2	550.1	661.4	0.00	0.00	0.00	
5,700.0	0.00	0.00	5,607.7	367.2	550.1	661.4	0.00	0.00	0.00	
5,800.0	0.00	0.00	5,707.7	367.2	550.1	661.4	0.00	0.00	0.00	
5,900.0	0.00	0.00	5,807.7	367.2	550.1	661.4	0.00	0.00	0.00	
6,000.0	0.00	0.00	5,907.7	367.2	550.1	661.4	0.00	0.00	0.00	
6,100.0	0.00	0.00	6,007.7	367.2	550.1	661.4	0.00	0.00	0.00	
6,200.0	0.00	0.00	6,107.7	367.2	550.1	661.4	0.00	0.00	0.00	
6,300.0	0.00	0.00	6,207.7	367.2	550.1	661.4	0.00	0.00	0.00	
6,400.0	0.00	0.00	6,307.7	367.2	550.1	661.4	0.00	0.00	0.00	
6,500.0	0.00	0.00	6,407.7	367.2	550.1	661.4	0.00	0.00	0.00	
6,600.0	0.00	0.00	6,507.7	367.2	550.1	661.4	0.00	0.00	0.00	
6,700.0	0.00	0.00	6,607.7	367.2	550.1	661.4	0.00	0.00	0.00	
6,800.0	0.00	0.00	6,707.7	367.2	550.1	661.4	0.00	0.00	0.00	
NIO										
6,803.3	0.00	0.00	6,711.0	367.2	550.1	661.4	0.00	0.00	0.00	
6,900.0	0.00	0.00	6,807.7	367.2	550.1	661.4	0.00	0.00	0.00	
7,000.0	0.00	0.00	6,907.7	367.2	550.1	661.4	0.00	0.00	0.00	
7,100.0	0.00	0.00	7,007.7	367.2	550.1	661.4	0.00	0.00	0.00	
CD										
7,127.3	0.00	0.00	7,035.0	367.2	550.1	661.4	0.00	0.00	0.00	
7,200.0	0.00	0.00	7,107.7	367.2	550.1	661.4	0.00	0.00	0.00	
GH										
7,210.3	0.00	0.00	7,118.0	367.2	550.1	661.4	0.00	0.00	0.00	
TD at 7287.3										
7,287.3	0.00	0.00	7,195.0	367.2	550.1	661.4	0.00	0.00	0.00	

Design Targets										
Target Name										
- hit/miss target	Dip Angle (°)	Dip Dir. (°)	TVD (ft)	+N/-S (ft)	+E/-W (ft)	Northing (ft)	Easting (ft)	Latitude		Longitude
- Shape										
Johnstown Farms 11- - plan hits target center - Point	0.00	0.00	7,195.0	367.2	550.1	1,361,968.05	3,167,583.97	40° 19' 31.598 N		104° 53' 56.188 W

Database:	EDM 2003.21 Single User Db	Local Co-ordinate Reference:	Well Johnstown Farms 11-9
Company:	ANADARKO PETROLEUM CORP.	TVD Reference:	WELL @ 4780.0ft (Original Well Elev)
Project:	ANADARKO COLORADO NOTHERN ZONE NAD 83	MD Reference:	WELL @ 4780.0ft (Original Well Elev)
Site:	WELD_Johnstown Farms	North Reference:	True
Well:	Johnstown Farms 11-9	Survey Calculation Method:	Minimum Curvature
Wellbore:	Johnstown Farms 11-9		
Design:	Johnstown Farms 11-9 (wp01)		

Casing Points

Measured Depth (ft)	Vertical Depth (ft)	Name	Casing Diameter (")	Hole Diameter (")
751.9	750.0	9 5/8"	9-5/8	12-1/4

Formations

Measured Depth (ft)	Vertical Depth (ft)	Name	Lithology	Dip (°)	Dip Direction (°)
7,210.3	7,118.0	GH		0.00	
3,918.3	3,826.0	SX		0.00	
6,803.3	6,711.0	NIO		0.00	
7,127.3	7,035.0	CD		0.00	

Plan Annotations

Measured Depth (ft)	Vertical Depth (ft)	Local Coordinates		Comment
		+N/-S (ft)	+E/-W (ft)	
300.0	300.0	0.0	0.0	Start Build 2.00
1,237.0	1,220.4	84.3	126.3	Start 1113.2 hold at 1237.0 MD
2,350.2	2,274.6	282.9	423.8	Start Drop -2.00
3,287.3	3,195.0	367.2	550.1	Start 4000.0 hold at 3287.3 MD
7,287.3	7,195.0	367.2	550.1	TD at 7287.3



ANADARKO PETROLEUM CORP.

**ANADARKO COLORADO NOTHERN ZONE NAD 83
WELD_Johnstown Farms
Johnstown Farms 11-9**

**Johnstown Farms 11-9
Johnstown Farms 11-9 (wp01)**

Anticollision Summary Report

29 September, 2010



Company:	ANADARKO PETROLEUM CORP.	Local Co-ordinate Reference:	Well Johnstown Farms 11-9
Project:	ANADARKO COLORADO NOTHERN ZONE NAD 83	TVD Reference:	WELL @ 4780.0ft (Original Well Elev)
Reference Site:	WELD_Johnstown Farms	MD Reference:	WELL @ 4780.0ft (Original Well Elev)
Site Error:	0.0ft	North Reference:	True
Reference Well:	Johnstown Farms 11-9	Survey Calculation Method:	Minimum Curvature
Well Error:	0.0ft	Output errors are at	2.00 sigma
Reference Wellbore	Johnstown Farms 11-9	Database:	EDM 2003.21 Single User Db
Reference Design:	Johnstown Farms 11-9 (wp01)	Offset TVD Reference:	Offset Datum

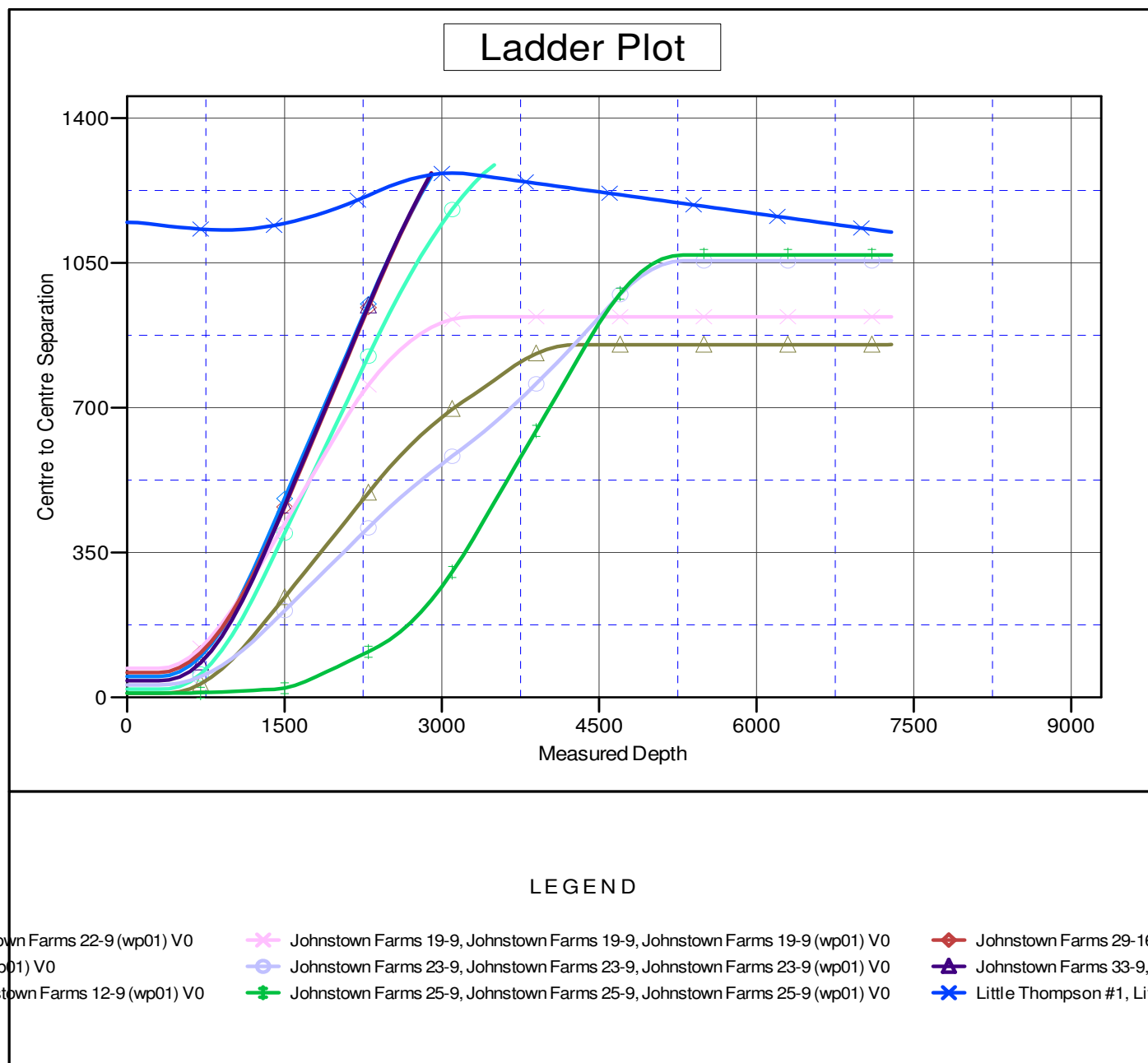
Reference	Johnstown Farms 11-9 (wp01)		
Filter type:	NO GLOBAL FILTER: Using user defined selection & filtering criteria		
Interpolation Method:	MD Interval 100.0ft	Error Model:	ISCWSA
Depth Range:	Unlimited	Scan Method:	Closest Approach 3D
Results Limited by:	Maximum center-center distance of 1,300.8ft	Error Surface:	Elliptical Conic
Warning Levels Evaluated at:	2.00 Sigma		

Survey Tool Program	Date 9/29/2010			
From (ft)	To (ft)	Survey (Wellbore)	Tool Name	Description
0.0	7,287.3	Johnstown Farms 11-9 (wp01) (Johnstowr	MWD	MWD - Standard

Summary						
Site Name	Reference Measured Depth (ft)	Offset Measured Depth (ft)	Distance Between Centres (ft)	Distance Between Ellipses (ft)	Separation Factor	Warning
Offset Well - Wellbore - Design						
WELD_Johnstown Farms						
HSR-Leahy #10-9 - HSR Leahy #10-9 - HSR Leahy #10-9						Out of range
Johnston Farms 22-9 - Johnstown Farms 22-9 - Johnst	300.0	300.0	10.1	9.0	8.974 CC, ES	
Johnstown 13-9 - Johnstown 13-9 - Johnstown 13-9 (wpC	300.0	300.0	50.2	49.1	44.669 CC, ES	
Johnstown Farms 12-9 - Johnstown Farms 12-9 - Johnst	300.0	300.0	19.9	18.8	17.690 CC, ES	
Johnstown Farms 19-9 - Johnstown Farms 19-9 - Johnst	300.0	300.0	70.1	69.0	62.359 CC, ES	
Johnstown Farms 23-9 - Johnstown Farms 23-9 - Johnst	300.0	300.0	30.0	28.8	26.664 CC, ES	
Johnstown Farms 25-9 - Johnstown Farms 25-9 - Johnst	300.0	300.0	10.2	9.0	9.047 CC	
Johnstown Farms 29-16 - Johnstown Farms 29-16 - Johi	300.0	300.0	59.9	58.8	53.331 CC, ES	
Johnstown Farms 33-9 - Johnstown Farms 33-9 - Johnst	300.0	300.0	40.1	39.0	35.695 CC, ES	
Johnston Farms 22-9 - Johnstown Farms 22-9 - Johnsto	500.0	499.1	13.6	11.6	6.724 SF	
Johnstown 13-9 - Johnstown 13-9 - Johnstown 13-9 (wpC	500.0	496.0	61.9	59.9	31.125 SF	
Johnstown Farms 12-9 - Johnstown Farms 12-9 - Johnst	500.0	499.6	25.9	23.9	12.831 SF	
Johnstown Farms 33-9 - Johnstown Farms 33-9 - Johnst	500.0	498.0	49.2	47.2	24.513 SF	
Johnstown Farms 23-9 - Johnstown Farms 23-9 - Johnst	600.0	599.6	41.3	38.8	16.636 SF	
Johnstown Farms 25-9 - Johnstown Farms 25-9 - Johnst	600.0	600.7	10.8	8.3	4.345 ES	
Johnstown Farms 29-16 - Johnstown Farms 29-16 - Johi	600.0	591.5	86.7	84.3	35.552 SF	
Johnstown Farms 25-9 - Johnstown Farms 25-9 - Johnst	1,400.0	1,402.4	19.5	9.7	1.978 SF	
Johnstown Farms 19-9 - Johnstown Farms 19-9 - Johnst	7,287.3	7,210.2	920.0	888.3	29.046 SF	
Little Thompson #1 - Little Thompson #1 - Little Thompsc	7,287.3	7,238.6	1,124.6	1,089.5	32.063 CC, ES, SF	

Company:	ANADARKO PETROLEUM CORP.	Local Co-ordinate Reference:	Well Johnstown Farms 11-9
Project:	ANADARKO COLORADO NORTHERN ZONE NAD 83	TVD Reference:	WELL @ 4780.0ft (Original Well Elev)
Reference Site:	WELD_Johnstown Farms	MD Reference:	WELL @ 4780.0ft (Original Well Elev)
Site Error:	0.0ft	North Reference:	True
Reference Well:	Johnstown Farms 11-9	Survey Calculation Method:	Minimum Curvature
Well Error:	0.0ft	Output errors are at	2.00 sigma
Reference Wellbore	Johnstown Farms 11-9	Database:	EDM 2003.21 Single User Db
Reference Design:	Johnstown Farms 11-9 (wp01)	Offset TVD Reference:	Offset Datum

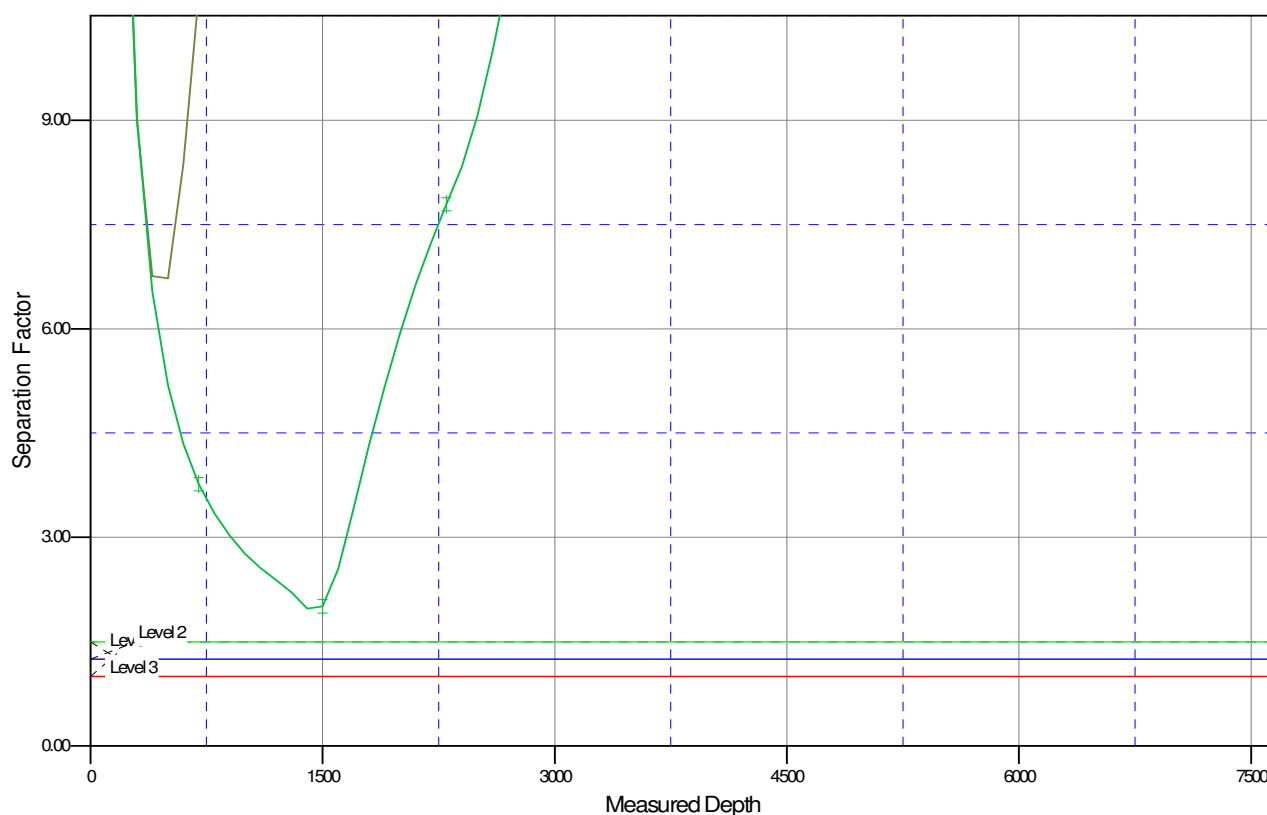
Reference Depths are relative to WELL @ 4780.0ft (Original Well Elev) Coordinates are relative to: Johnstown Farms 11-9
Offset Depths are relative to Offset Datum Coordinate System is US State Plane 1983, Colorado Northern Zone
Central Meridian is 105° 30' 0.000 W ° Grid Convergence at Surface is: 0.39°



Company:	ANADARKO PETROLEUM CORP.	Local Co-ordinate Reference:	Well Johnstown Farms 11-9
Project:	ANADARKO COLORADO NORTHERN ZONE NAD 83	TVD Reference:	WELL @ 4780.0ft (Original Well Elev)
Reference Site:	WELD_Johnstown Farms	MD Reference:	WELL @ 4780.0ft (Original Well Elev)
Site Error:	0.0ft	North Reference:	True
Reference Well:	Johnstown Farms 11-9	Survey Calculation Method:	Minimum Curvature
Well Error:	0.0ft	Output errors are at	2.00 sigma
Reference Wellbore	Johnstown Farms 11-9	Database:	EDM 2003.21 Single User Db
Reference Design:	Johnstown Farms 11-9 (wp01)	Offset TVD Reference:	Offset Datum

Reference Depths are relative to WELL @ 4780.0ft (Original Well Elev) Coordinates are relative to: Johnstown Farms 11-9
Offset Depths are relative to Offset Datum Coordinate System is US State Plane 1983, Colorado Northern Zone
Central Meridian is 105° 30' 0.000 W ° Grid Convergence at Surface is: 0.39°

Separation Factor Plot



LEGEND

Johnstown Farms 22-9 (wp01) V0	Johnstown Farms 19-9, Johnstown Farms 19-9, Johnstown Farms 19-9 (wp01) V0	Johnstown Farms 29-16, Johnstown Farms 29-16, Johnstown Farms 29-16 (wp01) V0
Johnstown Farms 21-9 (wp01) V0	Johnstown Farms 23-9, Johnstown Farms 23-9, Johnstown Farms 23-9 (wp01) V0	Johnstown Farms 33-9, Johnstown Farms 33-9, Johnstown Farms 33-9 (wp01) V0
Johnstown Farms 12-9 (wp01) V0	Johnstown Farms 25-9, Johnstown Farms 25-9, Johnstown Farms 25-9 (wp01) V0	Little Thompson #1, Little Thompson #1, Little Thompson #1 (wp01) V0