

TO:	SHOATS, HARRY
FROM:	STROMBERG, STEVEN
REQUESTED ON LOCATION:	02-Mar-2008 12:00 MST
CUSTOMER:	KINDER MORGAN INC
WELL NAME/NBR/LEASE:	Goodman Point , 12 /

**TABLE OF CONTENTS:**

Work Order Contract  
Job Summary

**MBU LEADER:** BE SURE THAT YOU HAVE RECEIVED EACH OF THE DOCUMENTS LISTED ABOVE. IF NOT, CONTACT CENTRAL DISPATCH IMMEDIATELY.

**HALLIBURTON****TREATMENT****Cementing Job Summary**

Stage/Plug #: 1									
Fluid #	Stage Type	Fluid Name	Qty	Qty uom	Mixing Density lbm/gal	Yield ft <sup>3</sup> /sk	Mix Fluid Gal/sk	Rate bbl/min	Total Mix Fluid Gal/sk
1	Water Ahead		10.0	bbl	.	.0	.0	.0	
2	Cement	CMT - PREMIUM - CLASS G, 94 LB SK (100003685)	60.0	sacks	16.5	1.06	4.24		4.24
	94 lbm	CMT - PREMIUM - CLASS G REG OR TYPE V, BULK (100003685)							
	3 %	POTASSIUM CHLORIDE - KCL, 50 LB BAG (100001585)							
	0.3 %	HR-5, 50 LB SK (100005050)							
	4.24 Gal	FRESH WATER							
3	Displacement			bbl	.			.0	
Calculated Values		Pressures		Volumes					
Displacement	58.3	Shut In: Instant		Lost Returns		Cement Slurry	11	Pad	
Top Of Cement		5 Min		Cement Returns	0	Actual Displacement	58.5	Treatment	
Frac Gradient		15 Min		Spacers		Load and Breakdown		Total Job	
Rates									
Circulating	5	Mixing	5	Displacement	4	Avg. Job	5		
Cement Left In Pipe	Amount	0 ft	Reason	Shoe Joint					
Frac Ring # 1 @	ID	Frac ring # 2 @	ID	Frac Ring # 3 @	ID	Frac Ring # 4 @	ID		
The Information Stated Herein Is Correct				Customer Representative Signature					

*The Road to Excellence Starts with Safety*

Sold To #: 320986	Ship To #: UNKNOWN	Quote #:	Sales Order #: 5725145
Customer: KINDER MORGAN INC		Customer Rep:	
Well Name: Goodman Point	Well #: 12	API/UWI #:	
Field:	City (SAP): UNKNOWN	County/Parish: Montezuma	State: Colorado
Legal Description:			
Lat:		Long:	
Contractor: Patterson UTI Drilling Co.		Rig/Platform Name/Num: Patterson UTI 747	
Job Purpose: Plug Service - Whipstock		Ticket Amount:	
Well Type: Development Well		Job Type: Plug Service - Whipstock	
Sales Person: SNYDER, RANDALL		Srv Supervisor: SHOATS, HARRY	MBU ID Emp #: 329013

Activity Description	Date/Time	Cht #	Rate bbl/min	Volume bbl		Pressure psig		Comments
				Stage	Total	Tubing	Casing	
Depart Yard Safety Meeting	03/01/2008 20:00							
Arrive at Location from Service Center	03/01/2008 23:00							
Assessment Of Location Safety Meeting	03/02/2008 04:30							
Pre-Rig Up Safety Meeting	03/02/2008 04:45							
Pre-Job Safety Meeting	03/02/2008 05:30							
Start Job	03/02/2008 06:04							
Test Lines	03/02/2008 06:05		0.5			5000.0		
Pump Spacer 1	03/02/2008 06:07		5	50			700.0	H2O
Pump Cement	03/02/2008 06:17		5	11			800.0	16.5# CMT/60 SKS
Clean Lines	03/02/2008 06:20		5	1			450.0	
Shutdown	03/02/2008 06:20						.0	
Drop Ball	03/02/2008 06:21						.0	
Pump Displacement	03/02/2008 06:22		5	58			400.0	
Other	03/02/2008 06:37						2050.0	SHEAR PIPE/TOOL
End Job	03/02/2008 06:38							

Sold To #: 7.20.130

Ship To #:

Quote #:

Sales Order #:

**HALLIBURTON****Cementing Job Summary**

Stage/Plug #: 1										
Fluid #	Stage Type	Fluid Name	Qty	Qty uom	Mixing Density lbm/gal	Yield ft <sup>3</sup> /sk	Mix Fluid Gal/sk	Rate bbl/min	Total Mi. Fluid Gal/	
1	Water Ahead		10.0	bbl	.	.0	.0	.0		
2	Cement	CMT - PREMIUM - CLASS G, 94 LB SK (100003685)	60.0	sacks	16.5	1.06	4.24		4.24	
	94 lbm	CMT - PREMIUM - CLASS G REG OR TYPE V, BULK (100003685)								
	3 %	POTASSIUM CHLORIDE - KCL, 50 LB BAG (100001585)								
	0.3 %	HR-5, 50 LB SK (100005050)								
	4.24 Gal	FRESH WATER								
3	Displacement			bbl	.			.0		
Calculated Values		Pressures			Volumes					
Displacement	58.3	Shut In: Instant		Lost Returns		Cement Slurry	11	Pad		
Top Of Cement		5 Min		Cement Returns	0	Actual Displacement	58.5	Treatment		
Frac Gradient		15 Min		Spacers		Load and Breakdown		Total Job		
Rates										
Circulating	5	Mixing	5	Displacement	4	Avg. Job	5			
Cement Left In Pipe	Amount	0 ft	Reason	Shoe Joint						
Frac Ring # 1 @	ID	Frac ring # 2 @	ID	Frac Ring # 3 @	ID	Frac Ring # 4 @	ID			
The Information Stated Herein Is Correct				Customer Representative Signature						



## Sales Order

Number: 5724548  
 Primary BOM: 12341 - PSL-CPS PACKER SERVICE-BOM  
 Sold To: 320986 - KINDER MORGAN INC  
 Bill To: 5022219 - KINDER MORGAN ENERGY PARTNERS, CO2  
 Plant: 0204 - Farmington, NM USA 4109E Main  
 PO/AFE Num: NA

## Well

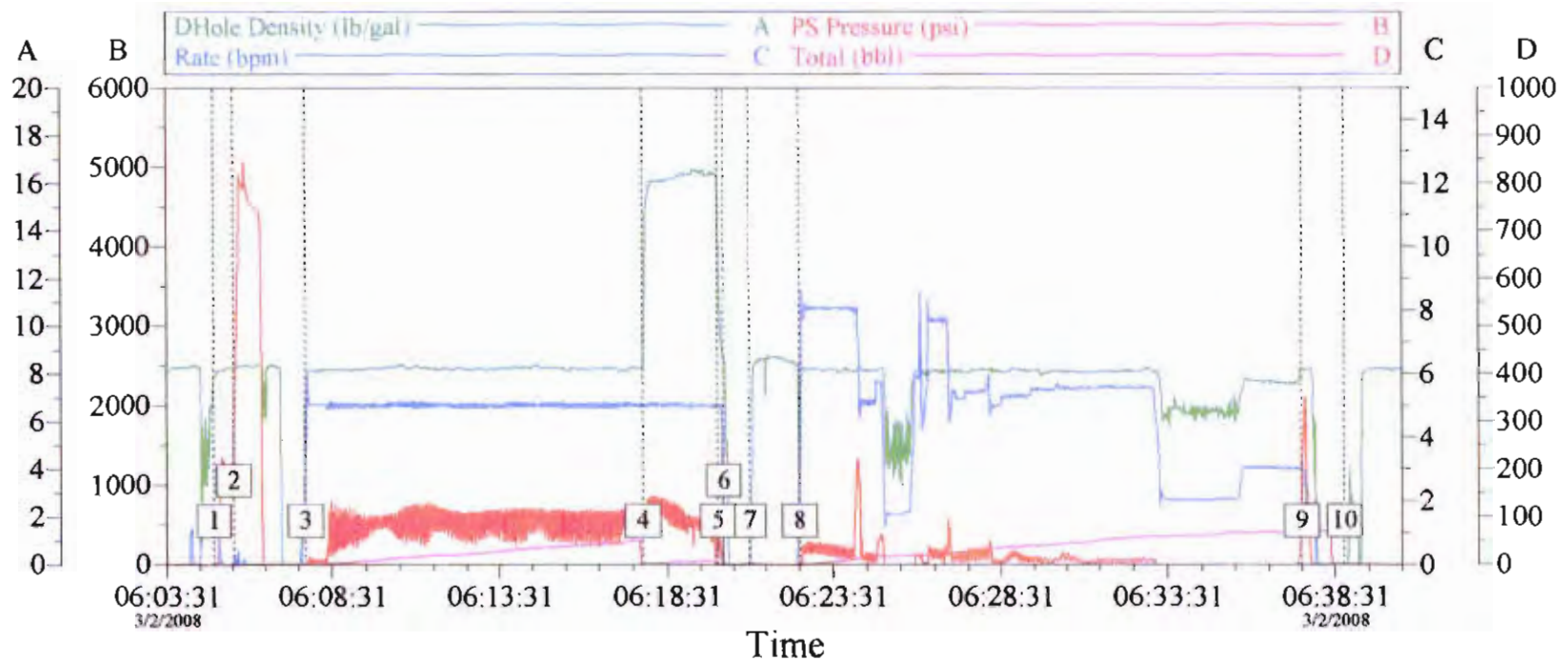
Ship To: 2621088 - KINDER MOR GOODMAN POINT 12,CORTEZ,  
 Description: KINDER MORGAN INC  
 Address: UNKNOWN, Montezuma, CO  
 Details: Oil - Development Well - Land  
 Well ID: Y0JVE02IGET4IAAA

Operator	Date-Time	Activity	Remarks
Calkin, Richard C	3/01/2008 16:00	1 - START JOB HOURS	LEAVE YARD
Calkin, Richard C	3/01/2008 19:00	2 - ON LOCATION	ARRIVED ON LOCATION, CHECK IN W/ LOCATION SUPERVISOR & ATTENDED PRE JOB SAFETY MTG.
Calkin, Richard C	3/01/2008 19:53	3 - JOB ACTIVITY	START PICKING UP 2 7/8" FIBER GLASS TBG ( 10 JTS = 290.73' )
Calkin, Richard C	3/01/2008 20:50	3 - JOB ACTIVITY	INSTALL TRT & TIH W/ 3 1/2" DRILL PIPE
Calkin, Richard C	3/02/2008 00:07	3 - JOB ACTIVITY	SD DOWN FOR LUNCH, 91 STD OR 182 JTS IN HOLE
Calkin, Richard C	3/02/2008 00:30	3 - JOB ACTIVITY	CMT TRKS ON LOCATION
Calkin, Richard C	3/02/2008 00:48	3 - JOB ACTIVITY	RESUME TIH W/ DRILL PIPE
Calkin, Richard C	3/02/2008 01:10	3 - JOB ACTIVITY	GAS BUBBLE, LOAD & CIRCULATE HOLE W/ WATER
Calkin, Richard C	3/02/2008 02:12	3 - JOB ACTIVITY	RESUME TIH W/ DP
Calkin, Richard C	3/02/2008 04:00	3 - JOB ACTIVITY	240 JTS IN - WENT OUT BOTTOM OF 7" SHOE INTO 4 3/4" OPEN HOLE - 8 MORE JTS TO BE ON BOTTOM.
Calkin, Richard C	3/02/2008 04:30	3 - JOB ACTIVITY	EOT @ 8151' 248 JTS OF DP IN, START TO CIRCULATE HOLE W/ DRILL WATER.
Calkin, Richard C	3/02/2008 04:47	3 - JOB ACTIVITY	BROKE CIRCULATION TO SUFR W/ @ 20 - 25 BBLs
Calkin, Richard C	3/02/2008 05:16	3 - JOB ACTIVITY	SD DOWN @ 72 BBLs GONE, RU HALLIBURTON PUMP TRK & HELD SAFETY MTG.
Calkin, Richard C	3/02/2008 06:05	3 - JOB ACTIVITY	TEST LINES TO 5000 PSI
Calkin, Richard C	3/02/2008 06:08	3 - JOB ACTIVITY	TESTED GOOD, OPEN OH VALVE & START PUMPING FRESH H2O SPACER @ 5 BPM.
Calkin, Richard C	3/02/2008 06:11	3 - JOB ACTIVITY	16 BBLs GONE, GOT CIRCULATION TO SURFACE.
Calkin, Richard C	3/02/2008 06:18	3 - JOB ACTIVITY	50 BBLs SPACER GONE, START CEMENT @ 16.5 LBS/GAL 7-BPM 140 PSI.
Calkin, Richard C	3/02/2008 06:21	3 - JOB ACTIVITY	11 BBLs CMT GONE, PUMP 1 BBL H2O TO DISPLACE PUMPS & LINES
Calkin, Richard C	3/02/2008 06:22	3 - JOB ACTIVITY	SD, OPEN RELEASE VALVE DP ON VACUUM, DROP BALLS.
Calkin, Richard C	3/02/2008 06:23	3 - JOB ACTIVITY	BALLS DROPPED, START DISPLACEMENT W/ FRESH H2O @ 9 BPM,
Calkin, Richard C	3/02/2008 06:26	3 - JOB ACTIVITY	31 BBLs GONE CAUGHT CEMENT, 10 BPM - 5 BPM PSI 1250- 30
Calkin, Richard C	3/02/2008 06:28	3 - JOB ACTIVITY	STARTED GETTING GAS BUBBLE OUT CASING
Calkin, Richard C	3/02/2008 06:33	3 - JOB ACTIVITY	50 BBLs GONE DEC RATE 5.5 - 3 BPM PSI 1250- 60
Calkin, Richard C	3/02/2008 06:37	3 - JOB ACTIVITY	BUMPED BALLS, PSI 30 - 2100, TRT SHEARED PSI DROPPED TO 0 PSI, OPEN RELEASE TBG ON VACUUM, RD OFF DP & TOOL.
Calkin, Richard C	3/02/2008 07:15	3 - JOB ACTIVITY	PULLED 20 STDs, CIRCULATE DOWN TBG, & OUT CASING, TOOK 20 - 30 BBLs TO GET CIRCULATION. GOT ANOTHER GAS BUBBLE OUT. EODP @ 6596' DP VOLUME = @ 49 BBLs,
Calkin, Richard C	3/02/2008 08:20	3 - JOB ACTIVITY	106 BBLs GONE, SD & LAY DOWN 10 JTS,
Calkin, Richard C	3/02/2008 12:30	3 - JOB ACTIVITY	OOH W/ TRT TOOL, LAY DOWN TOOL
Calkin, Richard C	3/02/2008 13:00	4 - LEAVE LOCATION	OFF LOCATION JOB FINISHED
Calkin, Richard C	3/02/2008 16:00	5 - STOP JOB HOURS	BACK IN YARD UNLOAD TOOLS
Calkin, Richard C	3/02/2008 16:01	6 - JOB LOG COMPLETE	END JOB TIME

calculate TOC = 7743'

# KINDER MOGAN

## KICK OFF PLUG



Event Log					
1	START JOB	06:04:57	2	PSI TST	06:05:33
			3	H2O SPACER	06:07:44
4	CEMENT	06:17:48	5	CLEAN LINES	06:20:01
			6	SHUT DOWN	06:20:12
7	DROP BALL	06:21:00	8	DISPLACE	06:22:32
			9	SHEAR TOOL	06:37:30
10	END JOB	06:38:48			

Customer: KINDER MORGAN  
Well Desc:

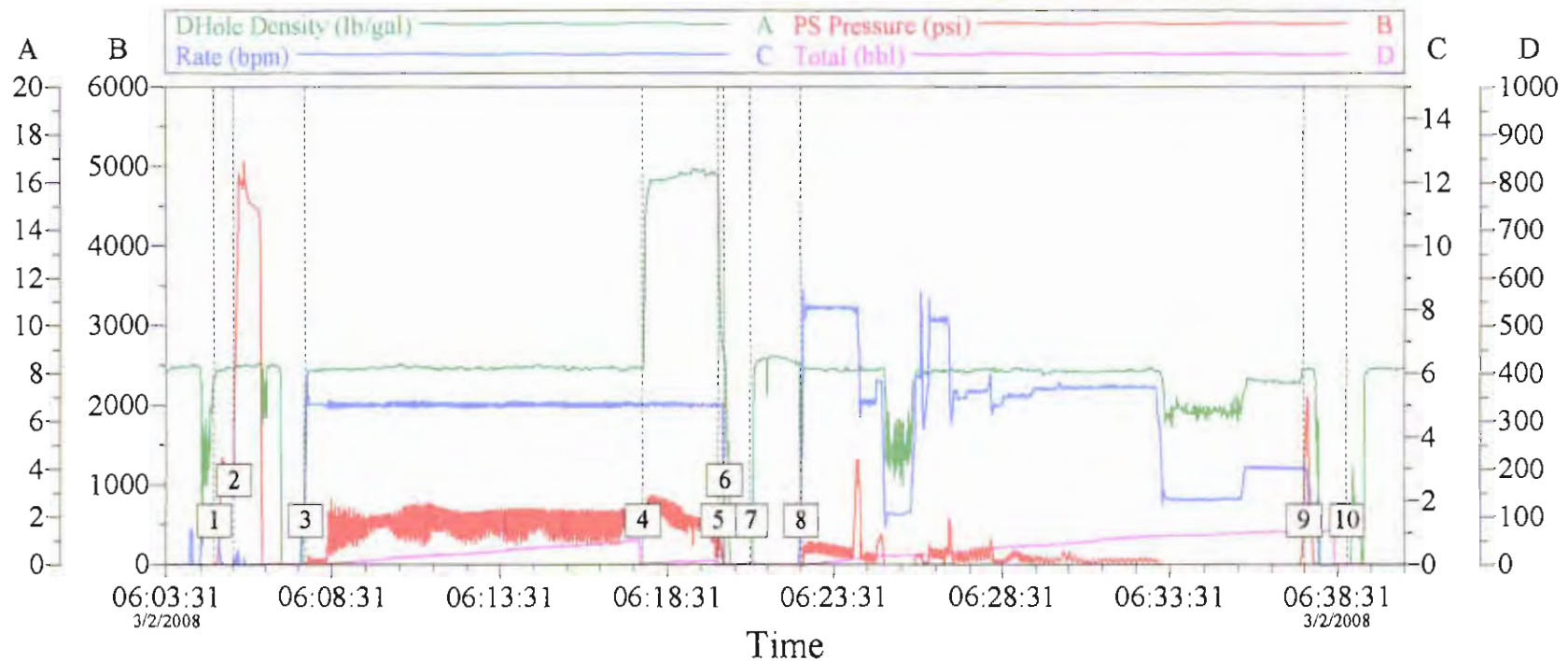
Job Date: 03-02-08  
UWI:

Ticket #: 5725145

CemWin v1.7.2  
02-Mar-08 06:58

# KINDER MOGAN

## KICK OFF PLUG



### Event Log

1	START JOB	06:04:57	2	PSI TST	06:05:33	3	H2O SPACER	06:07:44
4	CEMENT	06:17:48	5	CLEAN LINES	06:20:01	6	SHUT DOWN	06:20:12
7	DROP BALL	06:21:00	8	DISPLACE	06:22:32	9	SHEAR TOOL	06:37:30
10	END JOB	06:38:48						

Customer: KINDER MORGAN  
Well Desc:

Job Date: 03-02-08  
UWI:

Ticket #: 5725145

CemWin v1.7.2  
02-Mar-08 06:58



**Sales Order**

Number: 5684805  
 Primary BOM: 12341 - PSL-CPS PACKER SERVICE-BOM  
 Sold To: 320986 - KINDER MORGAN INC  
 Bill To: 5022219 - KINDER MORGAN ENERGY PARTNERS, CO2  
 Plant: 0204 - Farmington, NM USA 4109E Main  
 PO/AFE Num: NA

**Well**

Ship To: 2621088 - KINDER MOR GOODMAN POINT 12,CORTEZ,  
 Description: KINDER MORGAN INC  
 Address: UNKNOWN, Montezuma, CO  
 Details: Oil - Development Well - Land  
 Well ID: Y0JVE02IGET4IAAA

Operator	Date-Time	Activity	Remarks
Aanstad, Joel Lynn	2/13/2008 14:00	1 - START JOB HOURS	Loaded Out For Job. Journey Management Meeting, Route To Location, Traffic & Animals On Roadways. Leave for Location.
Aanstad, Joel Lynn	2/13/2008 16:30	2 - ON LOCATION	Arrive On Location. Sign In Safety Briefing. Check W/ Co. Rep. Mark Get Pipe Tally & Depth On Casing & Open Hole.
Aanstad, Joel Lynn	2/13/2008 17:25	3 - JOB ACTIVITY	Out Of Hole W/ D.P.
Aanstad, Joel Lynn	2/13/2008 17:35	3 - JOB ACTIVITY	Safety Meeting W/ Crew On Location. 14 People Slips, Trips & Falls. Muster Points. Running Fiber Glass Tbg & Drill Pipe.
Aanstad, Joel Lynn	2/13/2008 19:10	3 - JOB ACTIVITY	P.U. 10 Jts Fiberglass Tbg.
Aanstad, Joel Lynn	2/13/2008 19:55	3 - JOB ACTIVITY	P.U. TRT Tool
Aanstad, Joel Lynn	2/13/2008 20:14	3 - JOB ACTIVITY	Start T.J.H. W/ 3 1/2 D.P.
Aanstad, Joel Lynn	2/13/2008 23:40	3 - JOB ACTIVITY	Rig Up Head & Circulate Hole W/ Rig Pmp.
Aanstad, Joel Lynn	2/14/2008 00:25	3 - JOB ACTIVITY	Safety Meeting. 12 People. Safe meeting Area, Top Pressure 3000 Psi, Slips, Trips, & Falls While On Rig Floor & Around Location.
Aanstad, Joel Lynn	2/14/2008 01:15	3 - JOB ACTIVITY	S.D. Rig Pmp. Rig Up Cmt Iron.
Aanstad, Joel Lynn	2/14/2008 01:25	3 - JOB ACTIVITY	Test Lines 3500 Psi Held.
Aanstad, Joel Lynn	2/14/2008 01:27	3 - JOB ACTIVITY	Pmp F.W. 2 Bpm 250 Psi 12 Bbls
Aanstad, Joel Lynn	2/14/2008 01:35	3 - JOB ACTIVITY	Mix & Pmp Cmt 16.8 Bbls 3.5 Bpm @ 450 Psi.
Aanstad, Joel Lynn	2/14/2008 01:40	3 - JOB ACTIVITY	S.D. Drop Balls.
Aanstad, Joel Lynn	2/14/2008 01:48	3 - JOB ACTIVITY	Displace Cmt. 6 Bpm @ 200 Psi. Slowed Rate To 3.5 Bpm @ 48 Bbls Pmped.
Aanstad, Joel Lynn	2/14/2008 01:56	3 - JOB ACTIVITY	Ball Landed On Seat @ 50 Bbls Pumped. Pressure Went To 2350 Psi Fell To 1750 Psi. Shut Down.
Aanstad, Joel Lynn	2/14/2008 01:59	3 - JOB ACTIVITY	Release Pressure. No Fluid Returns.
Aanstad, Joel Lynn	2/14/2008 02:02	3 - JOB ACTIVITY	Remove Cmt. Iron.
Aanstad, Joel Lynn	2/14/2008 02:05	3 - JOB ACTIVITY	T.O.H. 15 Stds.
Aanstad, Joel Lynn	2/14/2008 02:32	3 - JOB ACTIVITY	Load Hole 17 Bbls
Aanstad, Joel Lynn	2/14/2008 02:43	3 - JOB ACTIVITY	Pressure D.P. To 300 Psi. 5 Min= 225 Psi 15Min=50 Psi
Aanstad, Joel Lynn	2/14/2008 03:03	3 - JOB ACTIVITY	Remove Iron. T.O.H. W/ D.P.
Aanstad, Joel Lynn	2/14/2008 03:30	3 - JOB ACTIVITY	Calculated Top Of Cmt Is 7562 Ft. Calculated Top Of Fiberglass 7732 Ft. Bottom Of Fiberglass 8030 Ft.



7 samples 2-13-2008

#	pH	Chlorides mg/l	Total Hardness mg/l	Calcium mg/l	Weight ppg
2	5.7	84,000	40,000	14,000	9.1
4	5.8	70,000	36,000	14,400	9.0
5	5.9	64,000	32,000	14,000	8.9
6	5.6	90,000	42,400	14,400	9.2
7	6.1	42,000	24,000	14,000	8.7
8	6.2	42,000	20,000	16,000	8.7
9	6.3	34,000	16,000	12,800	8.6

---

# KINDER MORGAN INC

---

**Goodman Point # 12**

**Montezuma County , Colorado**

**Plug Service - Whipstock**

**25-Feb-2008**

**Job Site Documents**

## Sales Order

Number: 5706296  
 Primary BOM: 12341 - PSL-CPS PACKER SERVICE-BOM  
 Sold To: 320986 - KINDER MORGAN INC  
 Bill To: 5022219 - KINDER MORGAN ENERGY PARTNERS, CO2  
 Plant: 0204 - Farmington, NM USA 4109E Main  
 PO/AE Num: NA

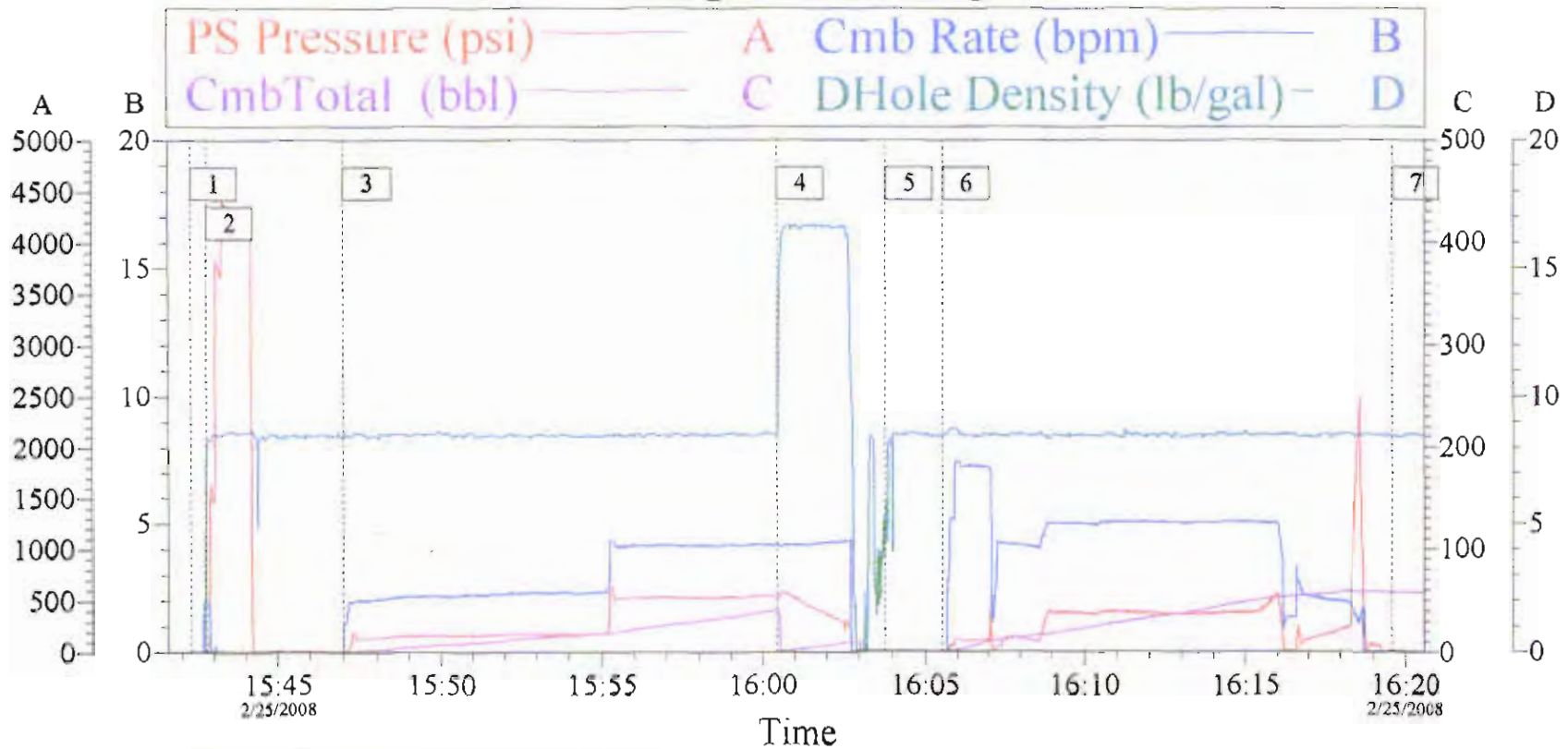
## Well

Ship To: 2621088 - KINDER MOR GOODMAN POINT 12, CORTEZ,  
 Description: KINDER MORGAN INC  
 Address: UNKNOWN, Montezuma, CO  
 Details: Oil - Development Well - Land  
 Well ID: Y0JVE02IGET41AAA

Operator	Date-Time	Activity	Remarks
Calkin, Richard C	2/23/2008 15:30	1 - START JOB HOURS	LEAVE GOODMAN POINT #11. MOVE TO GOODMAN POINT #12
Calkin, Richard C	2/23/2008 15:40	2 - ON LOCATION	ON LOCATION, HAVING TROUBLE STAYING IN FORMATION WHILE DRLG HORIZONTALLY, STD BY.
Calkin, Richard C	2/23/2008 17:30	3 - JOB ACTIVITY	SAFETY MTG FOR NEW RIG CREW COMING ON. WILL KEEP TRYING TO GET LINED OUT ON DEPTH 1 MORE TIME.
Calkin, Richard C	2/23/2008 18:40	3 - JOB ACTIVITY	DECIDED TO COME OUT OF HOLE WITH DRLG ASSY, & DO TRT JOB.
Calkin, Richard C	2/24/2008 05:30	3 - JOB ACTIVITY	OOH W/ DRLG ASSY, ATTEND SAFETY MTG FOR NEW RIG CREW COMING ON.
Calkin, Richard C	2/24/2008 06:35	3 - JOB ACTIVITY	PU 8 JTS OF 2 7/8" FIBER GLASS TBG, DROPPED 2 JTS OF 2 7/8" FIBER GLASS IN HOL, WRONG ELEVATORS, CONTINUE IN HOLE W/ 6 JTS, FIBER GLASS TBG, TBG RELEASE TOOL, 2 7/8" X 3 1/2" X-O, & 247 JTS OF 3 1/2" DRILL PIPE.
Calkin, Richard C	2/24/2008 09:40	3 - JOB ACTIVITY	CMT EQUIP ON LOCATION.
Calkin, Richard C	2/24/2008 13:05	3 - JOB ACTIVITY	END OF PIPE WENT THRU 7" SHOE INTO OPEN HOLE, NO PROBLEMS
Calkin, Richard C	2/24/2008 13:23	3 - JOB ACTIVITY	TAGGED UP @ 7957' WORKED UP & DOWN STACKED 15 K ON IT, RIG UP TO CIRCULATE
Calkin, Richard C	2/24/2008 14:10	3 - JOB ACTIVITY	RIGGED UP CMT HEAD & CIRCULATED JT DOWN.
Calkin, Richard C	2/24/2008 14:30	3 - JOB ACTIVITY	PU JT #247 & CIRCULATED DOWN & TAGGED UP @ 7987' & WORKED ON DOWN TO 8001'
Calkin, Richard C	2/24/2008 15:15	3 - JOB ACTIVITY	KEEP CIRCULATING, HAVE SAFETY MTG
Calkin, Richard C	2/24/2008 15:30	3 - JOB ACTIVITY	SD DOWN CIRCULATION & RU HALLIBURTON TO DP TO DO CEMENT JOB.
Calkin, Richard C	2/24/2008 15:52	3 - JOB ACTIVITY	START CMT @ 16.5#/GAL, END OF TBG = 8001'
Calkin, Richard C	2/24/2008 15:52	3 - JOB ACTIVITY	START PUMPING 40 BBL PREFLUSH,
Calkin, Richard C	2/24/2008 16:03	3 - JOB ACTIVITY	CMT GONE, PUMPED 1 BBL H2O, SD DP ON VACUUM, DROP BALLS, START DISPLACEMENT @ 7 BPM.
Calkin, Richard C	2/24/2008 16:05	3 - JOB ACTIVITY	CAUGHT CMT W/ 9BBLS GONE 450 PSI, DEC. RATE TO 5 BPM PSI DROPPED TO 350 PSI. CONTINUE DISPLACEMENT.
Calkin, Richard C	2/24/2008 16:15	3 - JOB ACTIVITY	50 BBLS GONE 5 BPM @ 566 PSI DEC RATE TO 2 BPM & PSI 180 CONTINUE DISPLACEMENT.
Calkin, Richard C	2/24/2008 16:19	3 - JOB ACTIVITY	BALL SEATED, PSI 230 - 2450 SHEARED & PSI WENT TO @120 & FELL OF SLOW. CALCULATED T.O.C. W/ TBG OUT = 7801. @ 80' UP INSIDE OF 7" CSG.
Calkin, Richard C	2/24/2008 16:43	3 - JOB ACTIVITY	10 STDs OOH, CIRCULATE DOWN TBG W WEATERFORD PUMP, CAUGHT PSI IN 5 BBLS & PUMPED 5 MORE BBLS TO INSURE D.P IS CLEAR.
Calkin, Richard C	2/24/2008 16:55	3 - JOB ACTIVITY	CONTINUE OOH
Calkin, Richard C	2/24/2008 21:30	3 - JOB ACTIVITY	OOH W/ LAY DOWN TOOLS JOB COMPLETE
Calkin, Richard C	2/24/2008 22:00	4 - LEAVE LOCATION	MOVE OVER TO GOODMAN POINT #11



# Whipstock Plug



## Event Log

1	Start Job	15:42:16	2	Test Lines	15:42:45	3	Pump Spacer 1	15:47:00
4	Pump Cement	16:00:27	5	Drop Plug	16:03:46	6	Pump Displacement	16:05:33
7	End Job	16:19:35						

Customer: Kinder Morgan  
Lease Goodman Point

Job Date: 2/25/08  
Well # 12

Ticket #: 5706679  
Supervisor Jess Tallman

CemWin v1.7.2  
25-Feb-08 16:40

Stage/Plug #: 1									
Fluid #	Stage Type	Fluid Name	Qty	Qty uom	Mixing Density lbm/gal	Yield ft <sup>3</sup> /sk	Mix Fluid Gal/sk	Rate bbl/min	Total Mix Fluid Gal/sk
1	Water Ahead		10.0	bbl	-	.0	.0	.0	
2	Cement	CMT - PREMIUM - CLASS G, 94 LB SK (100003685)	100.0	sacks	16.5	1.06	4.24		4.24
	94 lbm	CMT - PREMIUM - CLASS G REG OR TYPE V, BULK (100003685)							
	3 %	POTASSIUM CHLORIDE - KCL, 50 LB BAG (100001585)							
	0.3 %	HR-5, 50 LB SK (100005050)							
	4.24 Gal	FRESH WATER							
3	Displacement			bbl	-			.0	
Calculated Values		Pressures		Volumes					
Displacement		Shut In: Instant		Lost Returns		Cement Slurry		Pad	
Top Of Cement		5 Min		Cement Returns		Actual Displacement		Treatment	
Frac Gradient		15 Min		Spacers		Load and Breakdown		Total Job	
Rates									
Circulating		Mixing	4	Displacement	5	Avg. Job	5		
Cement Left In Pipe	Amount 0 ft	Reason	Shoe Joint						
Frac Ring # 1 @	ID	Frac ring # 2 @	ID	Frac Ring # 3 @	ID	Frac Ring # 4 @	ID		
The Information Stated Herein Is Correct				Customer Representative Signature					

*The Road to Excellence Starts with Safety*

Sold To #: 320986	Ship To #: UNKNOWN	Quote #:	Sales Order #: 5706679
Customer: KINDER MORGAN INC		Customer Rep:	
Well Name: Goodman Point	Well #: # 12	API/UWI #:	
Field:	City (SAP): UNKNOWN	County/Parish: Montezuma	State: Colorado
Legal Description:			
Lat: N 0 deg. OR N 0 deg. 0 min. 0 secs.		Long: E 0 deg. OR E 0 deg. 0 min. 0 secs.	
Contractor: EXP Drilling Co.		Rig/Platform Name/Num: EXP12	
Job Purpose: Plug Service - Whipstock			Ticket Amount:
Well Type: Development Well		Job Type: Plug Service - Whipstock	
Sales Person: SNYDER, RANDALL		Srv Supervisor: TALLMAN, JESS	MBU ID Emp #: 122519

Activity Description	Date/Time	Cht #	Rate bbl/min	Volume bbl		Pressure psig		Comments
				Stage	Total	Tubing	Casing	
Call Out	02/25/2008 04:00							
Depart Yard Safety Meeting	02/25/2008 05:45							
Crew Leave Yard	02/25/2008 05:55							
Arrive at Location from Service Center	02/25/2008 09:00							
Safety Meeting - Assessment of Location	02/25/2008 09:10							
Pre-Rig Up Safety Meeting	02/25/2008 09:30							
Rig-Up Equipment	02/25/2008 09:45							
Pre-Job Safety Meeting	02/25/2008 15:20							
Start Job	02/25/2008 15:42							
Pressure Test	02/25/2008 15:42					4000.0		
Pump Spacer 1	02/25/2008 15:47		2	40				
Pump Cement	02/25/2008 16:00		4	9.4				pump 1 bbl water behind cement before dropping balls
Drop Plug	02/25/2008 16:03							drop 2 foam balls and 1 hard ball
Pump Displacement	02/25/2008 16:05		5	57.7		556.0		pump 9 bbl @ 7 bbl per/min caught pressure & slowed rate down to 5 bbl a min and @ 50 slowed rate to 2 bbl a min
Bump Plug	02/25/2008 16:18		2	57.7		2450.0		sheared off 2 7/8 tubing from 3.5 drill pipe



## The Road to Excellence Starts with Safety

Sold To #: 320986	Ship To #: UNKNOWN	Quote #:	Sales Order #: 5706679
Customer: KINDER MORGAN INC	Customer Rep:		
Well Name: Goodman Point	Well #: # 12	API/UWI #:	
Field:	City (SAP): UNKNOWN	County/Parish: Montezuma	State: Colorado
Contractor: Patterson	Rig/Platform Name/Num:		
Job Purpose: Plug Service - Whipstock			
Well Type: Development Well	Job Type: Plug Service - Whipstock		
Sales Person: SNYDER, RANDALL	Srvc Supervisor: TALLMAN, JESS	MBU ID Emp #: 122519	

## Job Personnel

HES Emp Name	Exp Hrs	Emp #	HES Emp Name	Exp Hrs	Emp #	HES Emp Name	Exp Hrs	Emp #
cangialosi, nick	0.0	443898	HOUSE, JEFFREY Edward	8.5	427132	TALLMAN, JESS L	8.5	122519
WAGON, GLENSON C	8.5	428966						

## Equipment

HES Unit #	Distance-1 way	HES Unit #	Distance-1 way	HES Unit #	Distance-1 way	HES Unit #	Distance-1 way
10025024	107 mile	10046360	107 mile	10241534	107 mile	10948691	107 mile
78678	107 mile						

## Job Hours

Date	On Location Hours	Operating Hours	Date	On Location Hours	Operating Hours	Date	On Location Hours	Operating Hours
2/25/08	8.5	4						

TOTAL

Total is the sum of each column separately

Job				Job Times			
Formation Name				Date	Time	Time Zone	
Formation Depth (MD)	Top	Bottom		Called Out	25 - Feb - 2008	04:00	MST
Form Type	BHST			On Location	25 - Feb - 2008	09:00	MST
Job depth MD	8382. ft		Job Depth TVD	8382. ft	Job Started	25 - Feb - 2008	15:42
Water Depth			Wk Ht Above Floor	4. ft	Job Completed	25 - Feb - 2008	16:19
Perforation Depth (MD)	From	To		Departed Loc	25 - Feb - 2008	17:30	MST

## Well Data

Description	New / Used	Max pressure psig	Size in	ID in	Weight lbm/ft	Thread	Grade	Top MD ft	Bottom MD ft	Top TVD ft	Bottom TVD ft
-------------	------------	-------------------	---------	-------	---------------	--------	-------	-----------	--------------	------------	---------------

## Tools and Accessories

Type	Size	Qty	Make	Depth	Type	Size	Qty	Make	Depth	Type	Size	Qty	Make
Guide Shoe					Packer					Top Plug			
Float Shoe					Bridge Plug					Bottom Plug			
Float Collar					Retainer					SSR plug set			
Insert Float										Plug Container			
Stage Tool										Centralizers			

## Miscellaneous Materials

Gelling Agt	Conc	Surfactant	Conc	Acid Type	Qty	Conc %
Treatment Fld	Conc	Inhibitor	Conc	Sand Type	Size	Qty

## Fluid Data

Stage/Plug #: 1													
Fluid #	Stage Type	Fluid Name	Qty	Qty uom	Mixing Density lbm/gal	Yield ft <sup>3</sup> /sk	Mix Fluid Gal/sk	Rate bbl/min	Total Mix Fluid Gal/sk				

# Cementing Job Log

Activity Description	Date/Time	Cht #	Rate bbl/ min	Volume bbl		Pressure psig		Comments
				Stage	Total	Tubing	Casing	
End Job	02/25/2008 16:19							

---

# KINDER MORGAN INC

---

Goodman Point 12  
MC ELMO DOME  
Montezuma County , Colorado

**Plug Service - Whipstock**  
15-Feb-2008

**Job Site Documents**



## Work Order Contract

Order Number

5687766

Halliburton Energy Services, Inc.  
Houston, Texas 77056

TO: HALLIBURTON ENERGY SERVICES, INC. - YOU ARE HEREBY REQUESTED TO FURNISH EQUIPMENT AND SERVICE PERSONNEL TO DELIVER AND OPERATE THE SAME AS AN INDEPENDENT CONTRACTOR TO CUSTOMER LISTED BELOW AND DELIVER AND SELL PRODUCTS, SUPPLIES AND MATERIALS FOR THE PURPOSE OF SERVICING:

Well No. 12	Farm or Lease Goodman Point	County Montezuma	State Colorado	Well Permit Number
Customer KINDER MORGAN INC		Well Owner	Job Purpose Plug Service - Whipstock	

THIS WORK ORDER MUST BE SIGNED BEFORE WORK IS COMMENCED

A. CUSTOMER REPRESENTATION - Customer warrants that the well is in proper condition to receive the services, equipment, products, and materials to be supplied by Halliburton Energy Services, Inc. (hereinafter "Halliburton").

B. PRICE AND PAYMENT - The services, equipment, products, and/or materials to be supplied hereunder are priced in accordance with Halliburton's current price list. All prices are exclusive of taxes. If Customer does not have an approved open account with Halliburton, all sums due are payable in cash at the time of performance of services or delivery of equipment, products or materials. If Customer has an approved open account, invoices are payable on the twentieth day after the date of invoice. Customer agrees to pay interest on any unpaid balance from the date payable until paid at the highest lawful contract rate applicable, but never to exceed 18% per annum. In the event Halliburton employs an attorney for collection of any account, Customer agrees to pay attorney fees of 20% of the unpaid account, or Halliburton's actual attorneys fees, whichever is greater, plus all collection and court costs. Customer agrees that the amount of attorney fees set out herein are reasonable and necessary.

C. RELEASE AND INDEMNITY - Customer agrees to RELEASE Halliburton Group from any and all liability for any and all damages whatsoever to property of any kind owned by, in the possession of, or leased by Customer and those persons and entities Customer has the ability to bind by contract or which are co-interest owners or joint ventures with Customer. Customer also agrees to DEFEND, INDEMNIFY, AND HOLD Halliburton Group HARMLESS from and against any and all liability, claims, costs, expenses, attorney fees and damages whatsoever for personal injury, illness, death, property damage and loss resulting from:

loss of well control, resulting in control a well and whether underground or above the surface, invasion or underground damage, including loss of oil, gas, other natural substances or water, surface damage arising from underground damage, damage to or loss of the well bore, subsurface damage or any action in the nature thereof, fire, explosion, subsurface property, productivity, and pollution and contamination, and to clean up and control.

CUSTOMER'S RELEASE, DEFENSE, INDEMNITY AND HOLD HARMLESS obligations will apply even if the liability and claims are caused by the sole, concurrent, active or passive negligence, fault, or strict liability of one or more members of the Halliburton Group, the unreasonableness of any vessel or any defect in the data products, supplies, materials or equipment furnished by any member or members of the Halliburton Group, whether in the design, manufacture, maintenance or marketing thereof or from a failure to warn of such defect. "Halliburton Group" is defined as Halliburton Energy Services, Inc., its parent, subsidiary, and affiliated companies, insurance and subcontractors and all other officers, directors, employees, consultants and agents. Customer's RELEASE, DEFENSE, INDEMNITY AND HOLD HARMLESS obligations apply whether the personal injury, illness, death, property damage or loss is suffered by one or more members of the Halliburton Group, Customer, or any other persons or entity. Customer agrees to support such obligations, assumed herewith with liability insurance with limits of not less than \$500,000. Customer agrees to name Halliburton Group as named additional insured on all of its general liability policies. Customer agrees that its liability under this Contract is not limited by the amounts of its insurance coverage, except where and as may be required by applicable local law for the provisions of this Contract to be enforceable.

D. EQUIPMENT LIABILITY - Customer shall at its risk and expense attempt to recover any Halliburton Group equipment lost or lodged in the well. If the equipment is recovered and repairable, Customer shall pay the repair costs, unless caused by Halliburton's sole negligence. If the equipment is not recovered or is irreparable, Customer shall pay the replacement cost, unless caused by Halliburton's sole negligence. If a radioactive source becomes lost or lodged in the well, Customer shall meet all requirements of Section 39.15(a) of the Nuclear Regulatory Commission regulations and any other applicable laws or regulations concerning retrieval or abandonment and shall permit Halliburton to monitor the recovery or abandonment efforts all at no risk or liability to Halliburton Group. Customer shall be responsible for damage to or loss of Halliburton group equipment, products, and materials while in transit aboard Customer-supplied transportation, even if such is arranged by Halliburton at Customer's request, and during loading and unloading from such transport. Customer will also pay for the repair or replacement of Halliburton group equipment damaged by corrosion or abrasion due to well effluents.

E. LIMITED WARRANTY - Halliburton warrants only title to the equipment, products, and materials supplied under this Contract and that same are free from defects in workmanship and materials for thirty (30) days from the date of delivery. THERE ARE NO WARRANTIES, EXPRESS OR IMPLIED, OF MERCHANTABILITY, FITNESS OR OTHERWISE BEYOND THOSE STATED IN THE IMMEDIATELY PRECEDING SENTENCE. Halliburton's sole liability and Customer's exclusive remedy in any cause of action (whether in contract, tort, breach of warranty or otherwise) arising out of the sale, lease or use of any equipment, products, or materials is expressly limited to the replacement of such on their return to Halliburton or, at Halliburton's option, to the allowance to Customer of credit for the cost of such items. In no event shall Halliburton be liable for special, incidental, indirect, consequential, or punitive damages. Because of the uncertainty of variable well conditions and the necessity of relying on facts and supporting services furnished by others, HALLIBURTON IS UNABLE TO GUARANTEE THE EFFECTIVENESS OF THE EQUIPMENT, MATERIALS, OR SERVICE, NOR THE ACCURACY OF ANY CHART INTERPRETATION, RESEARCH ANALYSIS, JOB RECOMMENDATION OR OTHER DATA FURNISHED BY HALLIBURTON GROUP. Halliburton personnel will use their best efforts in gathering such information and their best judgment in interpreting it, but Customer agrees that Halliburton Group shall not be liable for and CUSTOMER SHALL INDEMNIFY HALLIBURTON GROUP AGAINST ANY DAMAGES ARISING FROM THE USE OF SUCH INFORMATION, even if such is contributed to or caused by the active or passive negligence, fault or strict liability of any member or members of Halliburton Group. Halliburton also does not warrant the accuracy of data transmitted by electronic process, and Halliburton will not be responsible for accidental or intentional interception of such data by third parties.

F. GOVERNING LAW - The validity, interpretation and construction of this Contract shall be determined by the laws of the jurisdiction where the services are performed or the equipment or materials are delivered.

G. DISPUTE RESOLUTION Customer and Halliburton agree that any dispute that may arise out of the performance of this Contract shall be resolved by binding arbitration by a panel of three arbitrators under the rules of the American Arbitration Association. The arbitration will take place in Houston, TX.

H. SEVERABILITY - If any provision or part thereof of this Contract shall be held to be invalid, void, or of no effect for any reason, such holding shall not be deemed to affect the validity of the remaining provisions of this Contract which can be given effect, without the invalid provision or part thereof, and to this end, the provisions of this Contract are declared to be severable. Customer and Halliburton agree that any provision of this Contract that is unenforceable or void under applicable law will be modified to achieve the intent of the parties hereunder to the greatest extent allowed by applicable law.

I. MODIFICATIONS - Customer agrees that Halliburton shall not be bound by any modifications to this Contract, except where such modification is made in writing by a duly authorized executive officer of Halliburton. Requests for modifications should be directed to the Vice President - Legal, 10200 Bellaire Blvd., Houston, TX 77072-5299.

I HAVE READ AND UNDERSTAND THIS WORK ORDER CONTRACT WHICH CONTAINS RELEASE AND INDEMNITY LANGUAGE WHICH CUSTOMER ACKNOWLEDGES

IS CONSPICUOUS AND AFFORDS FAIR AND ADEQUATE NOTICE AND I REPRESENT THAT I AM AUTHORIZED TO SIGN THE SAME AS CUSTOMER'S AGENT. I AM SIGNING THIS WORK ORDER CONTRACT WITH THE UNDERSTANDING THAT ITS TERMS AND CONDITIONS WILL NOT APPLY TO THE EXTENT THEY CONFLICT WITH TERMS AND CONDITIONS OF A SIGNED MASTER SERVICE CONTRACT BETWEEN THE PARTIES.

SIGNED:

CUSTOMER Authorized Signatory

DATE:

2-15-08

TIME:

0900

A.M./PM.

## Field Ticket

Field Ticket Number: 5687766

Field Ticket Date:

Friday, February 15, 2008

Job No:

Job Name: Whipstock Plug  
 Order Type: Streamline Order (ZOH)  
 Well Name: Goodman Point 12  
 Company Code: 1100  
 Customer PO No.: NA  
 Shipping Point: Farmington, NM USA 4109E Main  
 Sales Office: Rocky Mountains BD  
 Well Type:  
 Well Category:

Ship To:

KINDER MORGAN INC  
 Goodman Point, 12  
 2621088  
 UNKNOWN,

Material	Description	QTY	UOM	Base Amt	Unit Amt	Gross Amount	Discount	Net Amount
7529	CMT WHIPSTOCK PLUG BOM	1	JOB	0.00	0.00	0.00	54%	0.00
2	MILEAGE FOR CEMENTING CREW,ZI	240	MI	0.00	5.78	1,382.40	54%	635.90
	Number of Units	1						
1	ZI-MILEAGE FROM NEAREST HES BASE,/UNIT	240	MI	0.00	9.79	2,349.60	54%	1,080.82
	Number of Units	1						
16094	PLUG BACK/SPOT CEMENT OR MUD,ZI	1	EA	0.00	15,120.00	15,120.00	54%	6,955.20
	DEPTH	9200						
	FEET/METERS (FT/M)		FT					
78400	ZI MILEAGE,CMT MTLs DEL/RET MIN	120	MI	0.00	3.35	1,929.60	54%	867.62
	NUMBER OF TONS	4.8						
3985	HANDLE&DUMP SVC CHRg, CMT&ADDITIVES,ZI	103	CF	0.00	5.49	565.47	54%	260.12
	NUMBER OF EACH	1						
132	PORT. DAS W/CEMWIN;ACQUIRE W/HES, ZI	0	JOB	0.00	1,649.00	0.00	54%	0.00
	NUMBER OF DAYS	0						
86955	ZI FUEL SURCHG-HEAVY TRKS >1 1/2 TON	240	MI	0.00	0.45	216.00		216.00
	Number of Units	2						
86954	ZI FUEL SURCHG-CARS/PICKUPS<1 1/2TON	240	MI	0.00	0.15	36.00		36.00
	Number of Units	1						
87605	ZI FUEL SURCHG-CMT & CMT ADDITIVES	120	MI	0.00	0.15	86.40		86.40
	NUMBER OF TONS	4.8						
372867	Cmt PSL - DOT Vehicle Charge, CMT	2	EA	0.00	241.00	482.00		482.00
7	ENVIRONMENTAL SURCHARGE,/JOB,ZI	1	JOB	0.00	134.00	134.00		134.00

Material	Description	QTY	UOM	Base Amt	Unit Amt	Gross Amount	Discount	Net Amount
8	IRON SAFETY INSPECTION SURCHARGE /JOB Z	1	JOB	0.00	83.00	83.00		83.00
16092	ADDITIONAL HOURS (PUMPING EQUIPMENT), Z	1	EA	0.00	1,071.00	1,071.00	54%	492.66
	HOURS	1						
100003685	CLASS G / PREMIUM	100	SK	0.00	40.42	4,042.00	54%	1,859.32
100001585	KCL POTASSIUM CHLORIDE	106	LB	0.00	1.29	136.74	54%	62.90
100005050	HR-5	29	LB	0.00	11.07	321.03	54%	147.67
Halliburton Rep: KOLT RADOJITS		<b>Totals</b>		<b>USD</b>		<b>27,955.24</b>	<b>14,535.63</b>	<b>13,419.61</b>

Customer Agent:

Halliburton Approval

THIS OUTPUT DOES NOT INCLUDE TAXES. APPLICABLE SALES TAX WILL BE BILLED ON THE FINAL INVOICE.  
CUSTOMER HEREBY ACKNOWLEDGES RECEIPT OF THE MATERIALS AND SERVICES DESCRIBED ABOVE AND ON THE ATTACHED DOCUMENTS.

X  
Customer Signature

FIELD TICKET TOTAL USD 13,419.61



*Cementing Cover Sheet*

TO:	<b>RADOJITS, KOLT</b>
FROM:	<b>STROMBERG, STEVEN</b>
REQUESTED ON LOCATION:	<b>15-Feb-2008 06:00 MST</b>
CUSTOMER:	<b>KINDER MORGAN INC</b>
WELL NAME/NBR/LEASE:	<b>Goodman Point , 12 / Goodman Point</b>

**TABLE OF CONTENTS:**

Job Site Documents  
Work Order Contract  
Job Summary  
Job Log  
CPI Log Summary  
HSE

**MBU LEADER:** BE SURE THAT YOU HAVE RECEIVED EACH OF THE DOCUMENTS LISTED ABOVE. IF NOT, CONTACT CENTRAL DISPATCH IMMEDIATELY.

			Ticket # 5687766		Ticket date 02/15/2008	
NWA/Country United States of America		BDA/State Colorado		Parish/County Montezuma		
MBU ID/EMPL # 398349		HES Employee Name RADOJITS, KOLT		PSL Department Plug Service - Whipstock		
Location Farmington, NM USA 4109E Main		Company KINDER MORGAN INC		Customer Rep		
Ticket Amount		Well Type Development Well		Customer Rep Phone		
Field/Area MC ELMO DOME		Well Name Goodman Point		Well # 12		
API/UWI #	Job Purpose Code Plug Service - Whipstock	Well Category		SEC	TWN	RNG

## CPI Job Log Summary

Lost Time	
Operating Non Conformance	Equipment Non Conformance
Lost Time – Halliburton	Materials Non Conformance
	Design Non Conformance
Standby Time	
Standby – Rig	
Standby	
Standby – Customer	
Standby – Hours Policy	
Job Time	
Call Taken – Date/Time/Zone 14 - Feb - 2008 22:00 (GMT-07:00) Mountain Time	Start Rig Up – Date/Time/Zone 15 - Feb - 2008 12:10 (GMT-07:00) Mountain Time
Call Out Crew – Date/Time/Zone 15 - Feb - 2008 00:00 (GMT-07:00) Mountain Time	Complete Rig Up – Date/Time/Zone
Crew Called Actual – Date/Time/Zone 15 - Feb - 2008 00:00 (GMT-07:00) Mountain Time	Rqstd Job Start – Date/Time/Zone 15 - Feb - 2008 06:30 (GMT-07:00) Mountain Time
Crew Arrive Service Center – Date/Time/Zone	Actual Job Start – Date/Time/Zone 15 - Feb - 2008 12:10 (GMT-07:00) Mountain Time
Crew Leave Service Center – Date/Time/Zone	Job Complete – Date/Time/Zone 15 - Feb - 2008 15:00 (GMT-07:00) Mountain Time
Crew Rqstd On Location – Date/Time/Zone 15 - Feb - 2008 06:00 (GMT-07:00) Mountain Time	Start Rig Down – Date/Time/Zone 15 - Feb - 2008 15:00 (GMT-07:00) Mountain Time
Crew Arrive On Location – Date/Time/Zone 15 - Feb - 2008 08:00 (GMT-07:00) Mountain Time	Crew Leave Location – Date/Time/Zone 15 - Feb - 2008 17:00 (GMT-07:00) Mountain Time
	Crew Return Service Center – Date/Time/Zone
Hours	
Total Man Hours      0	Location Hours

## The Road to Excellence Starts with Safety

Sold To #: 320986		Ship To #: 2621088		Quote #:		Sales Order #: 5687766	
Customer: KINDER MORGAN INC				Customer Rep:			
Well Name: Goodman Point		Well #: 12		API/UWI #:			
Field: MC ELMO DOME		City (SAP): UNKNOWN		County/Parish: Montezuma		State: Colorado	
Contractor: Patterson UTI Drilling Co.		Rig/Platform Name/Num: Patterson UTI 747					
Job Purpose: Plug Service - Whipstock							
Well Type: Development Well				Job Type: Plug Service - Whipstock			
Sales Person: SNYDER, RANDALL				Srvc Supervisor: RADOJITS, KOLT		MBU ID Emp #: 398349	
Job Personnel							
HES Emp Name	Exp Hrs	Emp #	HES Emp Name	Exp Hrs	Emp #	HES Emp Name	Exp Hrs
COOLIDGE, MICHAEL R	0.0	429593	HOUSE, JEFFREY Edward	0.0	427132	RADOJITS, KOLT J	
RADOJITS, KOLT J	0.0	398349					
Equipment							
HES Unit #	Distance-1 way	HES Unit #	Distance-1 way	HES Unit #	Distance-1 way	HES Unit #	Distance-1 way
Job Hours							
Date	On Location Hours	Operating Hours	Date	On Location Hours	Operating Hours	Date	On Location Hours
TOTAL		Total is the sum of each column separately					
Job				Job Times			
Formation Name				Date		Time	
Formation Depth (MD) Top		Bottom		Called Out		15 - Feb - 2008 00:00 MST	
Form Type		BHST		On Location		15 - Feb - 2008 08:00 MST	
Job depth MD 9200. ft		Job Depth TVD 9200. ft		Job Started		15 - Feb - 2008 12:10 MST	
Water Depth		Wk Ht Above Floor 5. ft		Job Completed		15 - Feb - 2008 15:00 MST	
Perforation Depth (MD) From		To		Departed Loc		15 - Feb - 2008 17:00 MST	
Well Data							
Description	New / Used	Max pressure psig	Size in	ID in	Weight lbm/ft	Thread	Grade
7" 29# Casing	Used		7.	6.184	29.		P-110
6" Open Hole				6.			8500.
3 1/2" Drill Pipe	Used		3.5	2.764	13.3		N-80
							9300.
							9300.
							9300.
Tools and Accessories							
Type	Size	Qty	Make	Depth	Type	Size	Qty
Guide Shoe					Packer		
Float Shoe					Bridge Plug		
Float Collar					Retainer		
Insert Float							
Stage Tool							
Miscellaneous Materials							
Gelling Agt		Conc		Surfactant		Conc	
Treatment Fld		Conc		Inhibitor		Conc	
Fluid Data							
Stage/Plug #: 1							
Fluid #	Stage Type	Fluid Name			Qty	Qty uom	Mixing Density lbm/gal
							Yield ft3/sk
							Mix Fluid Gal/sk
							Rate bbl/min
							Total Mix Fluid Gal/sk

**Cementing Job Summary**

Stage/Plug #: 1										
Fluid #	Stage Type	Fluid Name	Qty	Qty uom	Mixing Density lbm/gal	Yield ft <sup>3</sup> /sk	Mix Fluid Gal/sk	Rate bbl/min	Total Mix Fluid Gal/sk	
1	Water Ahead		10.0	bbl	.	.0	.0	.0		
2	Cement	CMT - PREMIUM - CLASS G, 94 LB SK (100003685)	100.0	sacks	16.5	1.06	4.24		4.24	
	94 lbm	CMT - PREMIUM - CLASS G REG OR TYPE V, BULK (100003685)								
	3 %	POTASSIUM CHLORIDE - KCL, 50 LB BAG (100001585)								
	0.3 %	HR-5, 50 LB SK (100005050)								
	4.24 Gal	FRESH WATER								
3	Water Displacement			bbl				.0		
Calculated Values		Pressures			Volumes					
Displacement		Shut In: Instant			Lost Returns		Cement Slurry		Pad	
Top Of Cement		5 Min			Cement Returns		Actual Displacement		Treatment	
Frac Gradient		15 Min			Spacers		Load and Breakdown		Total Job	
Rates										
Circulating		Mixing		Displacement			Avg. Job			
Cement Left In Pipe		Amount	0 ft	Reason	Shoe Joint					
Frac Ring # 1 @		ID	Frac ring # 2 @	ID	Frac Ring # 3 @	ID	Frac Ring # 4 @	ID		
The Information Stated Herein Is Correct				Customer Representative Signature						

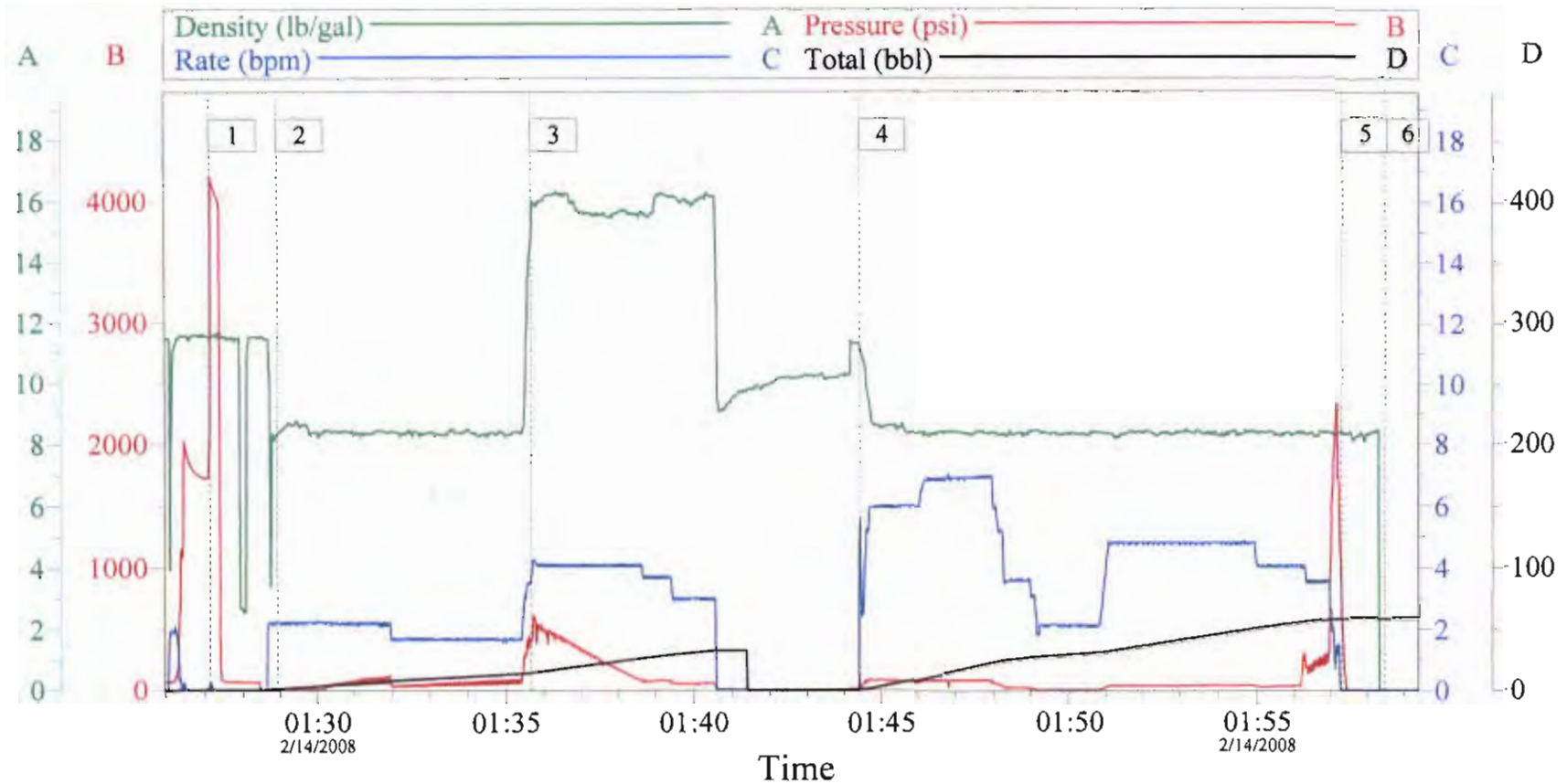


## The Road to Excellence Starts with Safety

Sold To #: 320986	Ship To #: 2621088	Quote #:	Sales Order #: 5687766
Customer: KINDER MORGAN INC	Customer Rep:		
Well Name: Goodman Point	Well #: 12	API/UWI #:	
Field: MC ELMO DOME	City (SAP): UNKNOWN	County/Parish: Montezuma	State: Colorado
Legal Description:			
Lat:	Long:		
Contractor: Patterson UTI Drilling Co.	Rig/Platform Name/Num: Patterson UTI 747		
Job Purpose: Plug Service - Whipstock	Ticket Amount:		
Well Type: Development Well	Job Type: Plug Service - Whipstock		
Sales Person: SNYDER, RANDALL	Srv Supervisor: RADOJITS, KOLT	MBU ID Emp #: 398349	

Activity Description	Date/Time	Cht #	Rate bbl/ min	Volume bbl		Pressure psig		Comments
				Stage	Total	Tubing	Casing	
Depart Location Safety Meeting	02/15/2008 00:00							as hes policy and procedure
Crew Leave Yard	02/15/2008 01:30							uniformed
Delayed Arrival due to Road/Weather Conditions	02/15/2008 08:00							Sever snow storm white out/ice
Arrive at Location from Service Center	02/15/2008 08:00							uniformed fashion
Safety Meeting - Assessment of Location	02/15/2008 08:05							as hes policy and procedure
Rig-Up Equipment	02/15/2008 12:10							Safely and timely team work
Pre-Job Safety Meeting	02/15/2008 12:30							hes and kindermorgan policy
Start Job	02/15/2008 12:45							prime up pump
Pressure Test	02/15/2008 12:45							3500#s on hes equipment
Establish Rate	02/15/2008 12:49		3		10		155.0	3bbls/min held presure
Pump Cement	02/15/2008 12:54		3		18.87		100.0	100sks16.5#1.06ft3 4.24gal/sk
Drop Ball	02/15/2008 13:00							hes tool hand manually released ball
Pump Displacement	02/15/2008 13:05		4		57.7		279.0	hes pump h2o from water truck
Ball on Seat	02/15/2008 13:17		3		57.7		2900.0	ceated ball in tool released fiberglass csg
Reverse Circ Well	02/15/2008 13:25		3.5		75			weatherford equipment
End Job	02/15/2008 15:32							job designn fulfilled
Crew Leave Location	02/15/2008 17:00							uniformed in hes policy standards

# KINDER MORGAN WHIPSTOCK PLUG



Event Log					
1	Start job,Test	01:27:09	2	Spacer	01:28:55
3	Cement	01:35:40	4	Displacement	01:44:26
5	Shut Down	01:57:18	6	End Job	01:58:28

Fluid Data									
Stage/Plug #: 1									
Fluid #	Stage Type	Fluid Name	Qty	Qty uom	Mixing Density lbm/gal	Yield ft <sup>3</sup> /sk	Mix Fluid Gal/sk	Rate bbl/min	Total Mix Fluid Gal/sk
1	Water Spacer		10.0	bbl	8.34	.0	.0	.0	
2	Kickoff Cement	CMT - CLASS G, 50 KG SK (100003685)	90.0	sacks	16.5	1.06	4.22		4.22
	94 lbm	CMT - PREMIUM - CLASS G REG OR TYPE V, BULK (100003685)							
	3 %	POTASSIUM CHLORIDE - KCL, 50 LB BAG (100001585)							
	0.7 %	HR-5, 50 LB SK (100005050)							
	0.1 %	CFR-3, W/O DEFOAMER, 50 LB SK (100003653)							
	0 %	HR-25, 50 LB BAG (100003756)							
	4.216 Gal	FRESH WATER							
3	Mud Displacement			bbl	.			.0	
4	Junked Cement	CMT - CLASS G, 50 KG SK (100003685)		sacks	16.5	1.06	4.24		4.24
	94 lbm	CMT - PREMIUM - CLASS G REG OR TYPE V, BULK (100003685)							
	3 %	POTASSIUM CHLORIDE - KCL, 50 LB BAG (100001585)							
	0.3 %	HR-5, 50 LB SK (100005050)							
	4.24 Gal	FRESH WATER							
Calculated Values		Pressures		Volumes					
Displacement	57	Shut In: Instant		Lost Returns		Cement Slurry	17	Pad	
Top Of Cement		5 Min		Cement Returns		Actual Displacement	50	Treatment	
Frac Gradient		15 Min		Spacers	10	Load and Breakdown		Total Job	
Rates									
Circulating	2	Mixing	4	Displacement	5	Avg. Job	4		
Cement Left In Pipe	Amount	0 ft	Reason	Shoe Joint					
Frac Ring # 1 @	ID	Frac ring # 2 @	ID	Frac Ring # 3 @	ID	Frac Ring # 4 @	ID		
The Information Stated Herein Is Correct				Customer Representative Signature					





*The Road to Excellence Starts with Safety*

Sold To #: 320986	Ship To #: 2621088	Quote #:	Sales Order #: 5684451
Customer: KINDER MORGAN INC		Customer Rep:	
Well Name: Goodman Point		Well #: 12	API/UWI #: 05-083-06634
Field:	City (SAP): UNKNOWN	County/Parish: Montezuma	State: Colorado
Legal Description:			
Lat: N 37.402 deg. OR N 37 deg. 24 min. 8.496 secs.		Long: W 108.754 deg. OR W -109 deg. 14 min. 44.16 secs.	
Contractor: EXP Drilling Co.		Rig/Platform Name/Num: EXP 12	
Job Purpose: Plug Service - Whipstock			Ticket Amount:
Well Type: Development Well		Job Type: Plug Service - Whipstock	
Sales Person: SNYDER, RANDALL		Srvc Supervisor:	MBU ID Emp #:

Activity Description	Date/Time	Cht #	Rate bbl/min	Volume bbl		Pressure psig		Comments
				Stage	Total	Tubing	Casing	
Depart Yard Safety Meeting	02/13/2008 17:00							
Assessment Of Location Safety Meeting	02/13/2008 21:00							
Rig-Up Equipment	02/13/2008 21:30							
Safety Huddle	02/13/2008 22:00							
Start Job	02/14/2008 01:30							
Test Lines	02/14/2008 01:31					3500.0		
Pump Spacer 1	02/14/2008 01:35		2	10				H2O
Pump Cement	02/14/2008 01:40		4	17	27			90 SKS. MIXED @ 16.5#
Drop Ball	02/14/2008 01:50							
Pump Displacement	02/14/2008 01:51		4	57	84			H2O
Shutdown	02/14/2008 02:01							OPEN TOOL 2380 PSI
Rig-Down Equipment	02/14/2008 02:10							
Rig-Down Completed	02/14/2008 03:00							
Safety Huddle	02/14/2008 03:10							
Depart Location for Service Center or Other Site	02/14/2008 03:30							

**Sales Order**

Number: 5687816  
 Primary BOM: 12341 - PSL-CPS PACKER SERVICE-BOM  
 Sold To: 320986 - KINDER MORGAN INC  
 Bill To: 5022219 - KINDER MORGAN ENERGY PARTNERS, CO2  
 Plant: 0204 - Farmington, NM USA 4109E Main  
 PO/AFE Num: NA

**Well**

Ship To: 2621088 - KINDER MOR GOODMAN POINT 12,CORTEZ,  
 Description: KINDER MORGAN INC  
 Address: UNKNOWN, Montezuma, CO  
 Details: Oil - Development Well - Land  
 Well ID: Y0JVE02IGET4IAAA

Operator	Date-Time	Activity	Remarks
Reese, Richard Wayne (Rick)	2/14/2008 22:30	1 - START JOB HOURS	LOAD OUT LEAVE YARD
Reese, Richard Wayne (Rick)	2/15/2008 02:00	2 - ON LOCATION	ARRIVED ON LOCATION AND DISCUSS JOB WITH MARK
Reese, Richard Wayne (Rick)	2/15/2008 02:30	3 - JOB ACTIVITY	STAND BY TOOH WITH DRILL PIPE
Reese, Richard Wayne (Rick)	2/15/2008 05:30	3 - JOB ACTIVITY	HAD SAFETY DISCUSS JOB AND SLIP TRIPS AND FALLS
Reese, Richard Wayne (Rick)	2/15/2008 06:30	3 - JOB ACTIVITY	PICK UP 10 JTS FIBER GLASS TUBING
Reese, Richard Wayne (Rick)	2/15/2008 07:45	3 - JOB ACTIVITY	PICK UP TRT TOOL AND TIH WITH 3 1/2 DRILL PIPE
Reese, Richard Wayne (Rick)	2/15/2008 10:45	3 - JOB ACTIVITY	ON BOTTOM WITH 122 STANDS TOP OF FIBER GLASS AT 7732 AND BOOTTOM AT 8030.RIG UP TO CIRCULATE FOR ONE HR
Reese, Richard Wayne (Rick)	2/15/2008 11:00	3 - JOB ACTIVITY	START CIRCULATING
Reese, Richard Wayne (Rick)	2/15/2008 11:45	3 - JOB ACTIVITY	HELD SAFETY MEETING ON CEMENT JOB 19 PERSONS ON LOCATION
Reese, Richard Wayne (Rick)	2/15/2008 12:00	3 - JOB ACTIVITY	STOP CIRCULATING RIG DOWN KELLY RIG UP HALLIBURTON
Reese, Richard Wayne (Rick)	2/15/2008 12:40	3 - JOB ACTIVITY	PRESURE TEST 3500 PSI
Reese, Richard Wayne (Rick)	2/15/2008 12:45	3 - JOB ACTIVITY	ESTABLISH RATE A 3 BBLS MIN AT 155 PSI PUMP 18. 87 BBLS CEMENT SHUT DOWN DROP BALLS START DISPLACEMENT PUMPING 6 BBLS MIN WITH 47 BBLS GOING SLOW DOWN TO 3 BBLS BALL ON SEAT PRESSURE UP TO 2900 PSI SHEARED ON FIBER GLASS SHUT DOWN
Reese, Richard Wayne (Rick)	2/15/2008 13:15	3 - JOB ACTIVITY	RIG DOWN IRON TOOH 10 STANDS. CALCULATED TOP CEMENT TO BE 7483'
Reese, Richard Wayne (Rick)	2/15/2008 13:30	3 - JOB ACTIVITY	REVERSE OUT WITH WEATHERFORD DRILL PIPE CLEAN SHUT DOWN PUMPING
Reese, Richard Wayne (Rick)	2/15/2008 14:00	3 - JOB ACTIVITY	TOOH WITH DRILL PIPE AND TRT TOOL
Reese, Richard Wayne (Rick)	2/15/2008 21:30	3 - JOB ACTIVITY	TRT TOOL AT SURFACE LOAD
Reese, Richard Wayne (Rick)	2/15/2008 22:00	4 - LEAVE LOCATION	OFF LOCATION



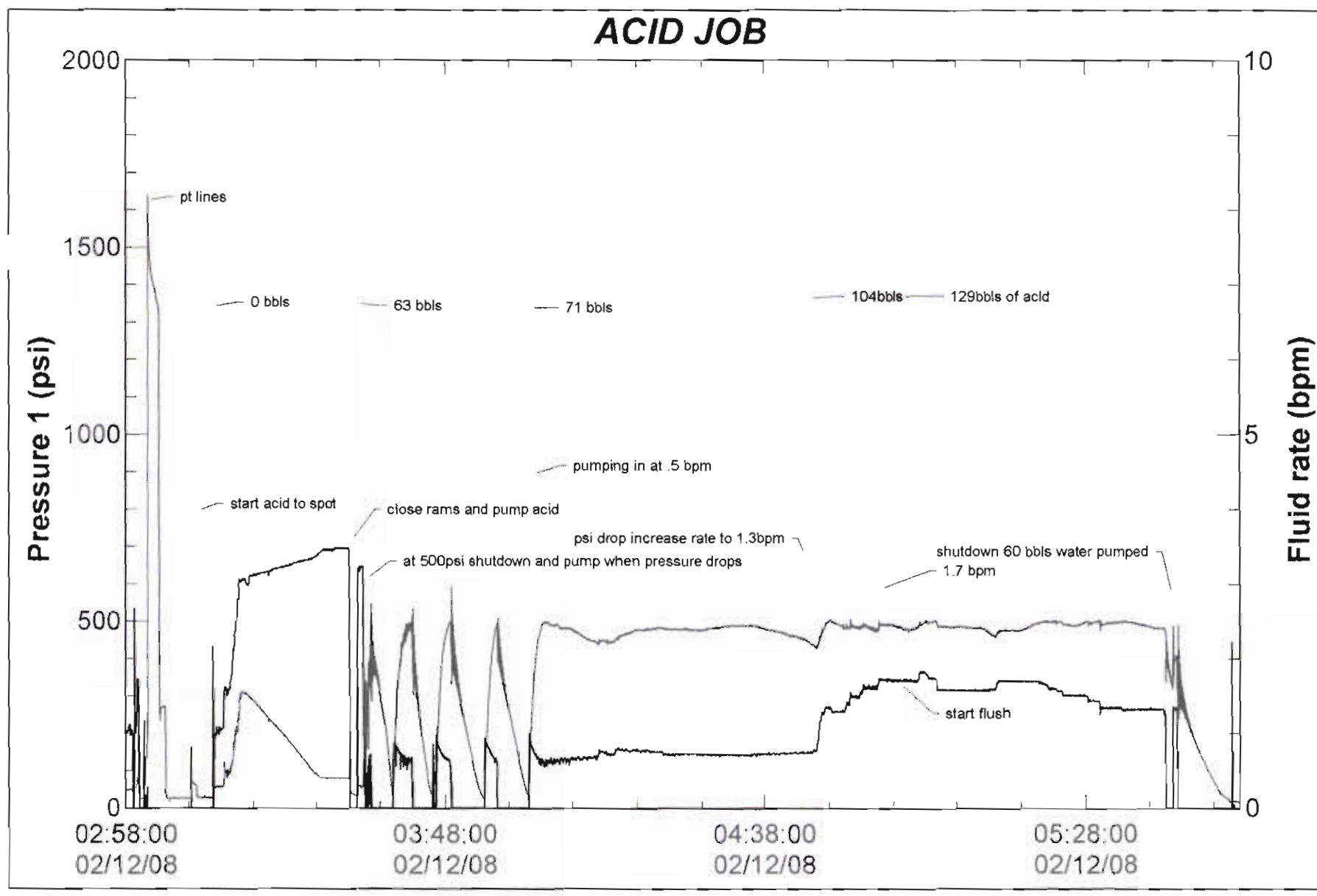


BJ Services JobMaster Program Version 3.10

Job Number: 1001281834

Customer: KINDER MORGAN

Well Name: GOODMAN POINT #12 12



---

# KINDER MORGAN INC

---

Goodman Point 12  
MC ELMO DOME  
Montezuma County , Colorado

**Plug Service - Whipstock**

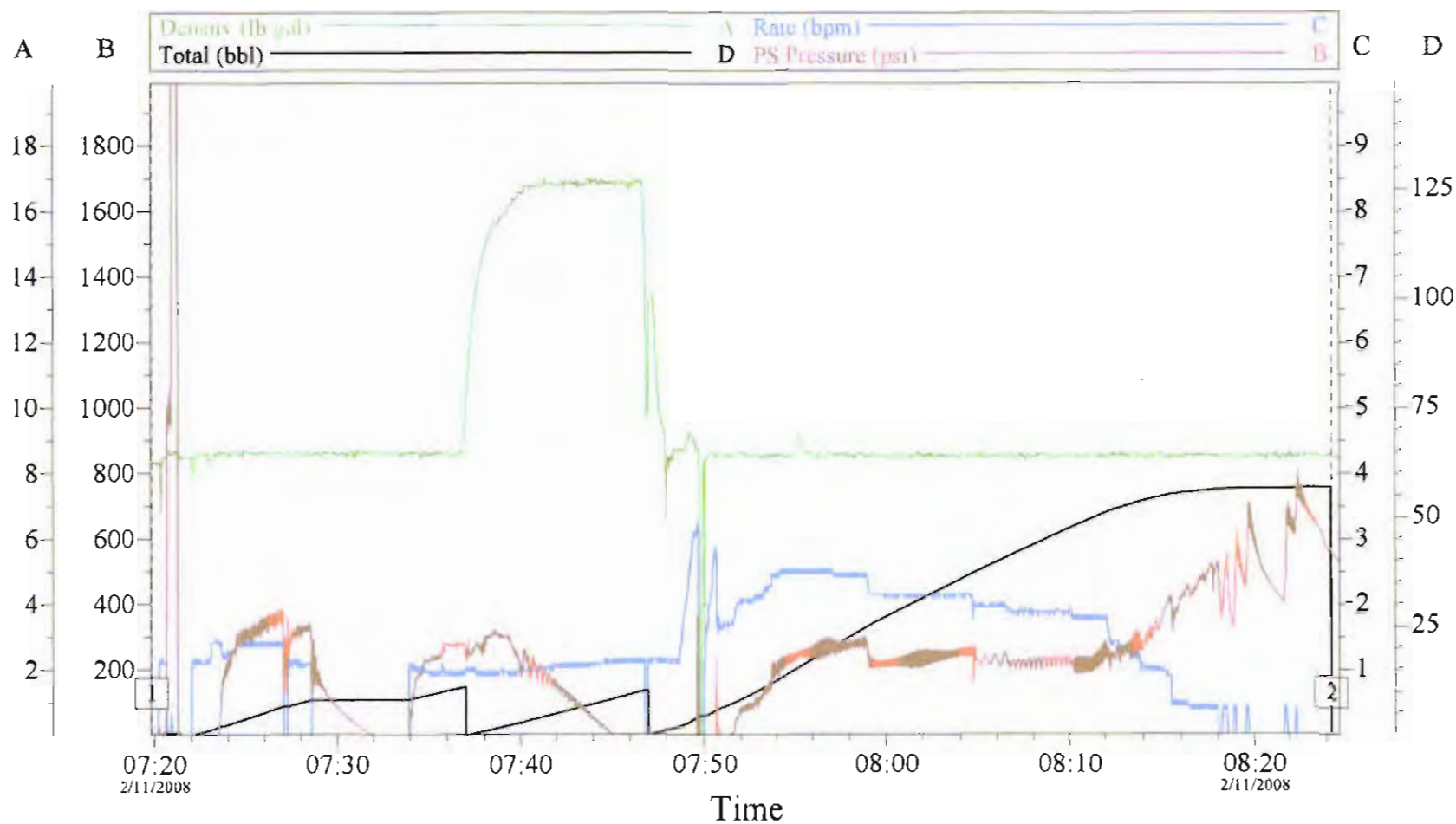
11-Feb-2008

**Job Site Documents**





Fluid Data									
Stage/Plug #: 1									
Fluid #	Stage Type	Fluid Name	Qty	Qty uom	Mixing Density lbm/gal	Yield ft <sup>3</sup> /sk	Mix Fluid Gal/sk	Rate bbl/min	Total Mix Fluid Gal/sk
1	Water Ahead		10.00	bbl	.	.0	.0	.0	
2	Cement	CMT - PREMIUM - CLASS G, 94 LB SK (100003685)	50.0	sacks	16.5	1.06	4.22		4.22
	94 lbm	CMT - PREMIUM - CLASS G REG OR TYPE V, BULK (100003685)							
	3 %	POTASSIUM CHLORIDE - KCL, 50 LB BAG (100001585)							
	0.7 %	HR-5, 50 LB SK (100005050)							
	0.1 %	CFR-3, W/O DEFOAMER, 50 LB SK (100003653)							
	0 %	HR-25, 50 LB BAG (100003756)							
	4.216 Gal	FRESH WATER							
3	Displacement			bbl	.			.0	
4	Water Spacer		10.0	bbl	8.34	.0	.0	.0	
5	Kickoff Cement	CMT - CLASS G, 50 KG SK (100003685)	65.0	sacks	16.5	1.06	4.22		4.22
	94 lbm	CMT - PREMIUM - CLASS G REG OR TYPE V, BULK (100003685)							
	3 %	POTASSIUM CHLORIDE - KCL, 50 LB BAG (100001585)							
	0.7 %	HR-5, 50 LB SK (100005050)							
	0.1 %	CFR-3, W/O DEFOAMER, 50 LB SK (100003653)							
	0 %	HR-25, 50 LB BAG (100003756)							
	4.216 Gal	FRESH WATER							
6	Mud Displacement			bbl	.			.0	
7	Junked Cement	CMT - CLASS G, 50 KG SK (100003685)		sacks	16.5	1.06	4.24		4.24
	94 lbm	CMT - PREMIUM - CLASS G REG OR TYPE V, BULK (100003685)							
	3 %	POTASSIUM CHLORIDE - KCL, 50 LB BAG (100001585)							
	0.3 %	HR-5, 50 LB SK (100005050)							
	4.24 Gal	FRESH WATER							
Calculated Values		Pressures		Volumes					
Displacement		Shut In: Instant		Lost Returns		Cement Slurry		Pad	
Top Of Cement		5 Min		Cement Returns		Actual Displacement		Treatment	
Frac Gradient		15 Min		Spacers		Load and Breakdown		Total Job	
Rates									
Circulating		Mixing		Displacement		Avg. Job			
Cement Left In Pipe		Amount	0 ft	Reason	Shoe Joint				
Frac Ring # 1 @	ID	Frac ring # 2 @	ID	Frac Ring # 3 @	ID	Frac Ring # 4 @	ID		
The Information Stated Herein Is Correct				Customer Representative Signature					



Event Log	
1	Start Job 07:19:52
2	End Job 08:24:17

Customer:	Job Date:	Ticket #:	HALLIBURTON CemWin v1.7.2 11-Feb-08 09:13
Well Desc:	UWI:		

## Cementing Job Log

## The Road to Excellence Starts with Safety

Sold To #: 320986		Ship To #: 2621088		Quote #:		Sales Order #: 5673739	
Customer: KINDER MORGAN INC				Customer Rep:			
Well Name: Goodman Point			Well #: 12		API/UWI #: 05-083-06634		
Field: MC ELMO DOME		City (SAP): Cortez, Colorado		County/Parish: Montezuma		State: Colorado	
Legal Description:							
Lat: N 37.402 deg. OR N 37 deg. 24 min. 8.496 secs.				Long: W 108.754 deg. OR W -109 deg. 14 min. 44.16 secs.			
Contractor: EXP Drilling Co.			Rig/Platform Name/Num: EXP 12				
Job Purpose: Plug Service - Whipstock						Ticket Amount:	
Well Type: Development Well			Job Type: Plug Service - Whipstock				
Sales Person: SNYDER, RANDALL			Srvc Supervisor: RADOJITS, KOLT			MBU ID Emp #: 398349	

Activity Description	Date/Time	Cht #	Rate bbl/min	Volume bbl		Pressure psig		Comments
				Stage	Total	Tubing	Casing	
Depart Location Safety Meeting	02/10/2008 14:25							AS OF HES POLICY
Crew Leave Yard	02/10/2008 14:30							UNIFORMED
Arrive at Location from Service Center	02/10/2008 17:30							ON TIME
Safety Meeting - Assessment of Location	02/11/2008 05:00							AS HES POLICY
Rig-Up Equipment	02/11/2008 05:30							SAFELY AND EFIECIENTLY
Pre-Job Safety Meeting	02/11/2008 06:40							AS OF RIG AND HES REQUEST
Pump Cement	02/11/2008 07:36		2		10		100.0	50sks1.06ft3 4.22ga;/sk 16.5#
Start Job	02/11/2008 07:40							ON TIME
Pressure Test	02/11/2008 07:41							HES 3000#S ON EQUIPEMENT
Pump Spacer 1	02/11/2008 07:42		2.5		10		390.0	WATER TRUCK H2O ESTABLISHED RATE
Pump Displacement	02/11/2008 07:47		0.5		59		700.0	squeezed off 56bbbls in displacement
Reverse Circ Well	02/11/2008 08:25		3.3		120			circulated 4.6bbbls back
Rig-Down Equipment	02/11/2008 08:50							AS OF JOB DESIGNN
Job Complete	02/11/2008 10:00							
Crew Leave Location	02/11/2008 12:00							UNIFORMED



		Ticket # 5673739		Ticket date 02/11/2008	
NWA/Country United States of America		BDA/State Colorado		Parish/County Montezuma	
MBU ID/EMPL # 398349		HES Employee Name RADOJITS, KOLT		PSL Department Plug Service - Whipstock	
Location Farmington, NM USA 4109E Main		Company KINDER MORGAN INC		Customer Rep	
Ticket Amount		Well Type Development Well		Customer Rep Phone	
Field/Area MC ELMO DOME		Well Name Goodman Point		Well # 12	
API/UWI # 05-083-06634	Job Purpose Code Plug Service - Whipstock	Well Category Development		SEC	TWN RNG

## CPI Job Log Summary

Lost Time	
Operating Non Conformance	Equipment Non Conformance
Lost Time – Halliburton	Materials Non Conformance
	Design Non Conformance
Standby Time	
Standby – Rig	
Standby	
Standby – Customer	
Standby – Hours Policy	
Job Time	
Call Taken – Date/Time/Zone	Start Rig Up – Date/Time/Zone 11 - Feb - 2008 05:00 (GMT-07:00) Mountain Time
Call Out Crew – Date/Time/Zone 10 - Feb - 2008 14:00 (GMT-07:00) Mountain Time	Complete Rig Up – Date/Time/Zone
Crew Called Actual – Date/Time/Zone 10 - Feb - 2008 14:00 (GMT-07:00) Mountain Time	Rqstd Job Start – Date/Time/Zone 10 - Feb - 2008 18:00 (GMT-07:00) Mountain Time
Crew Arrive Service Center – Date/Time/Zone	Actual Job Start – Date/Time/Zone 11 - Feb - 2008 05:00 (GMT-07:00) Mountain Time
Crew Leave Service Center – Date/Time/Zone	Job Complete – Date/Time/Zone 11 - Feb - 2008 09:00 (GMT-07:00) Mountain Time
Crew Rqstd On Location – Date/Time/Zone 10 - Feb - 2008 18:00 (GMT-07:00) Mountain Time	Start Rig Down – Date/Time/Zone 11 - Feb - 2008 10:00 (GMT-07:00) Mountain Time
Crew Arrive On Location – Date/Time/Zone 10 - Feb - 2008 17:30 (GMT-07:00) Mountain Time	Crew Leave Location – Date/Time/Zone 11 - Feb - 2008 12:00 (GMT-07:00) Mountain Time
	Crew Return Service Center – Date/Time/Zone
Hours	
Total Man Hours 0	Location Hours