

# LEGEND

- EXISTING LOCATION
- EXISTING ROAD



## Wasatch Surveying Associates

906 Main Street Evanston, Wyoming 82930  
Phone No. (307) 789-4545 Fax 307-789-5722



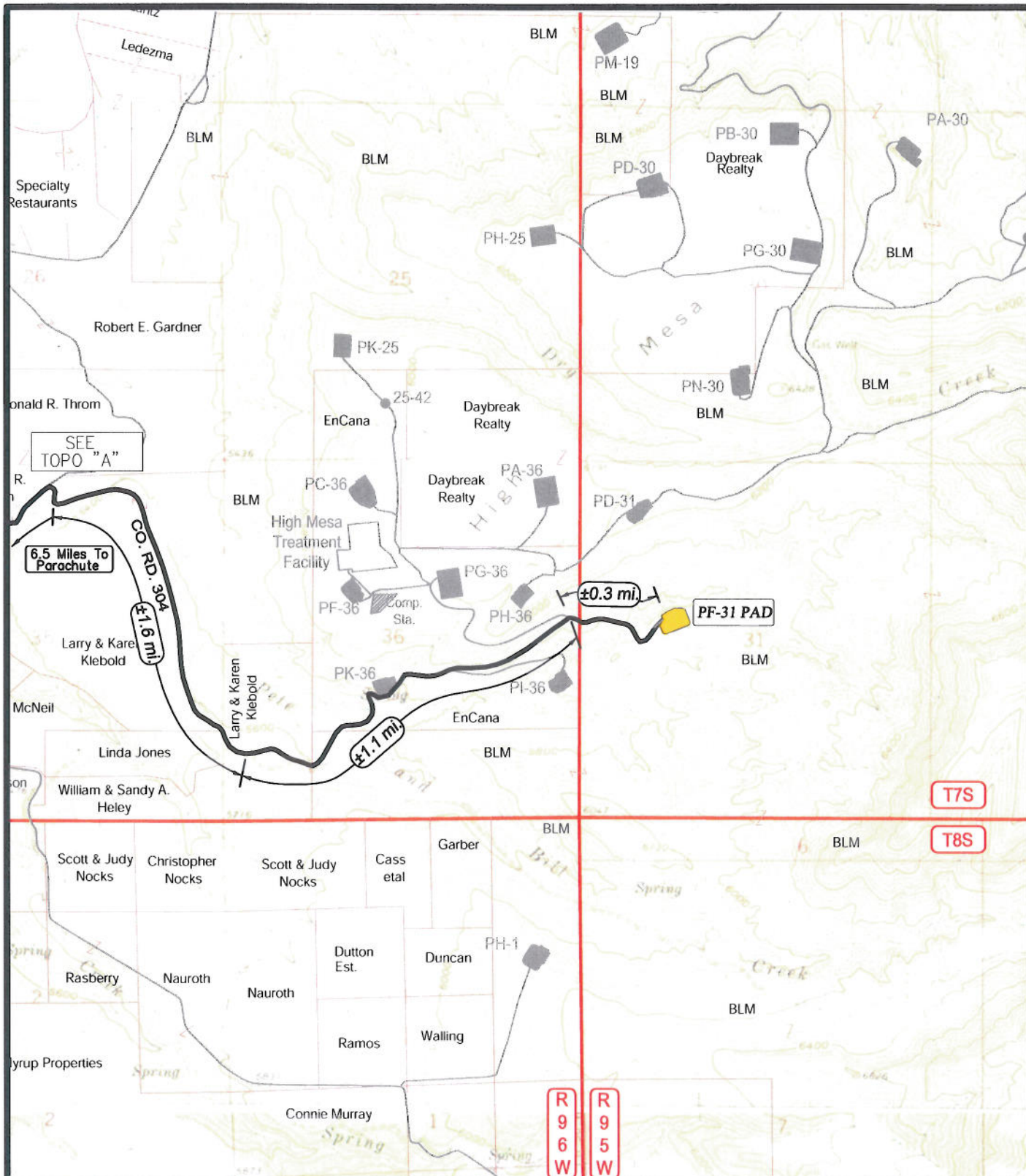
## EnCana Oil & Gas (USA) Inc.

PF-31 PAD  
SECTION 31, T7S, R95W, 6th, P.M.  
GARFIELD COUNTY, COLORADO

TOPO A

PROJECT NUMBER  
10-04-17  
DATE: 5/25/10  
SCALE: 1:100,000

8  
of 10

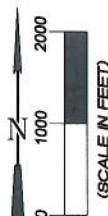


# LEGEND

- PF-31 WELL PAD
- EXISTING ROAD



**Wasatch Surveying Associates**  
 906 Main Street Evanston, Wyoming 82930  
 Phone No. (307) 789-4545 Fax 307-789-5722



**EnCana Oil & Gas (USA) Inc.**

PF-31 Well Pad  
 SECTION 31, T7S, R95W, 6th, P.M.  
 GARFIELD COUNTY, COLORADO

**TOPO B**

PROJECT NUMBER  
 10-04-17  
 DATE: 5/25/10  
 SCALE: 1" = 2000'

**9**  
 of 10