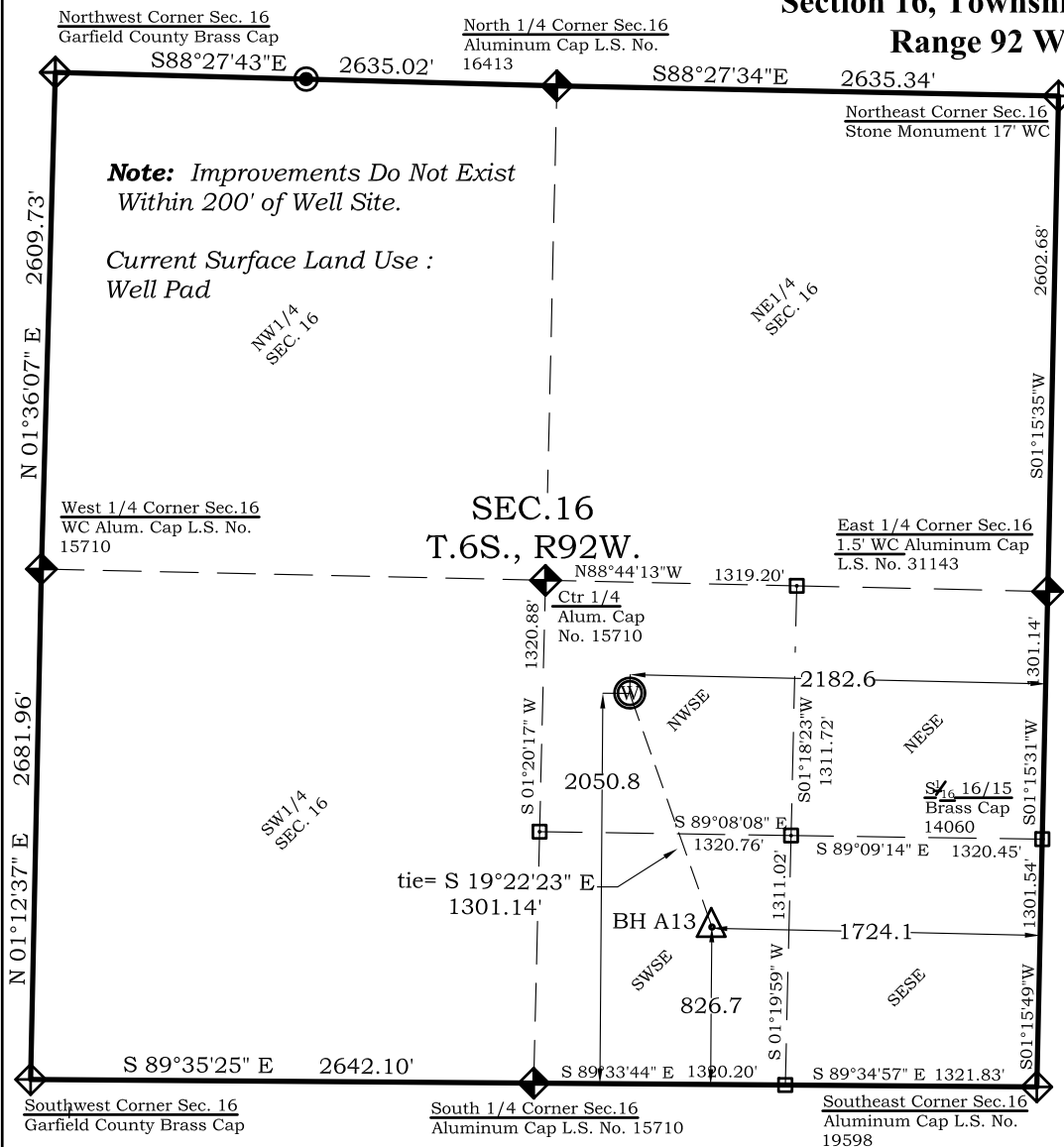


# BURCKLE FEDERAL A13

## Well Location Plat

Section 16, Township 6 South,  
Range 92 West



Graphic Scale in Feet  
1"= 1000'

### Legend

- Field Surveyed Section Corner
- Field Surveyed Quarter Corner
- Calculated Section Corner Location
- Field Surveyed 1/6 Corner

### Bottom Hole: Burckle A13

827' FSL

1724' FWL

**NAD83**

Lat: 39.521928249°N

Long: 107.668556826°W

**NAD27**

Lat: 39.521947701°N

Long: 107.667941600°W

### Surface: Burckle A13

2051' FSL

2183' FEL

Gnd El= 5558.4

Pad El= 5560.0

**NAD83**

Lat: 39.525260588°N

Long: 107.670214774°W

**NAD27**

Lat: 39.525280042°N

Long: 107.669599443°W

UTM 13 NORTH

**NAD 1983**

NORTHING

14365040.111

EASTING

887415.346

Prepared For Antero Resources:

Proposed Burckle Federal A13 Well Situate in The SE1/4  
Section 16, Township 6 South, Range 92 West of the 6th.

Principal Meridian, County of Garfield, State of Colorado.

### SURVEYOR'S CERTIFICATE

I, SCOTT E. AIBNER, A REGISTERED LAND SURVEYOR, LICENSED UNDER THE LAWS OF THE STATE OF COLORADO DO HEREBY CERTIFY THAT THE SURVEY SHOWN HEREON WAS PREPARED BY RIVER VALLEY SURVEY, INC., FOR ANTERO RESOURCES, BY ME OR UNDER MY DIRECT SUPERVISION AND HAS BEEN STAKED ON THE GROUND AS SHOWN ON THE PLAT AND THAT THIS PLAT IS A TRUE REPRESENTATION THEREOF.

BY:   
SCOTT E. AIBNER, COLORADO REG. NO. 31143

### Notes:

1. LATITUDE AND LONGITUDE COORDINATES ARE DIFFERENTIALLY CORRECTED AND BASED ON PUBLISHED NGS CONTROL STATION "WDP-5". SYSTEM: UTM ZONE: 13 NORTH DATUM: NAD 1983 (CONUS)
2. ELEVATIONS ARE BASED ON NAVD OF 1983.
3. ALL BOTTOM AND TOP HOLE LOCATIONS ARE MEASURED 90 DEGREES FROM SECTION LINE.
4. USGS QUADRANGLE MAP "SILT".
5. CURRENT SURFACE LAND USE: WELL PAD SITE.
6. PDOP AT THE TIME OF LOCATION OF SURFACE WELL = 2.6



**River Valley Survey, Inc.**  
110 East 3rd. Street, Suite 213  
Rifle, Colorado 81650  
Ph: 970-379-7846

Project: BURCKLE A PAD

Field Date: 01-04-11

Date: 02-15-11

Scale: 1"= 1000'

Sheet: 1 of 11

**Well Location Plat**  
Prepared For Antero Resources

Situate In:  
NW1/4SE1/4 Section 16, T6S.,  
R. 92 W. of the 6th P.M., Garfield  
County, Colorado

