

LEGEND

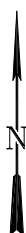
- PROPOSED WELL PAD
- PROPOSED ACCESS ROAD
- EXISTING ROAD

EnCana Oil & Gas (USA) Inc.

M16W PAD ACCESS
SECTION 16, T7S, R93W, 6th, P.M.
GARFIELD COUNTY, COLORADO



Wasatch Surveying Associates
906 Main Street Evanston, Wyoming 82930
Phone No. (307) 789-4545 Fax 307-789-5722



TOPO A

PROJECT NUMBER
10-04-44
DATE: 7/7/10
SCALE: 1:100,000

8
of 10