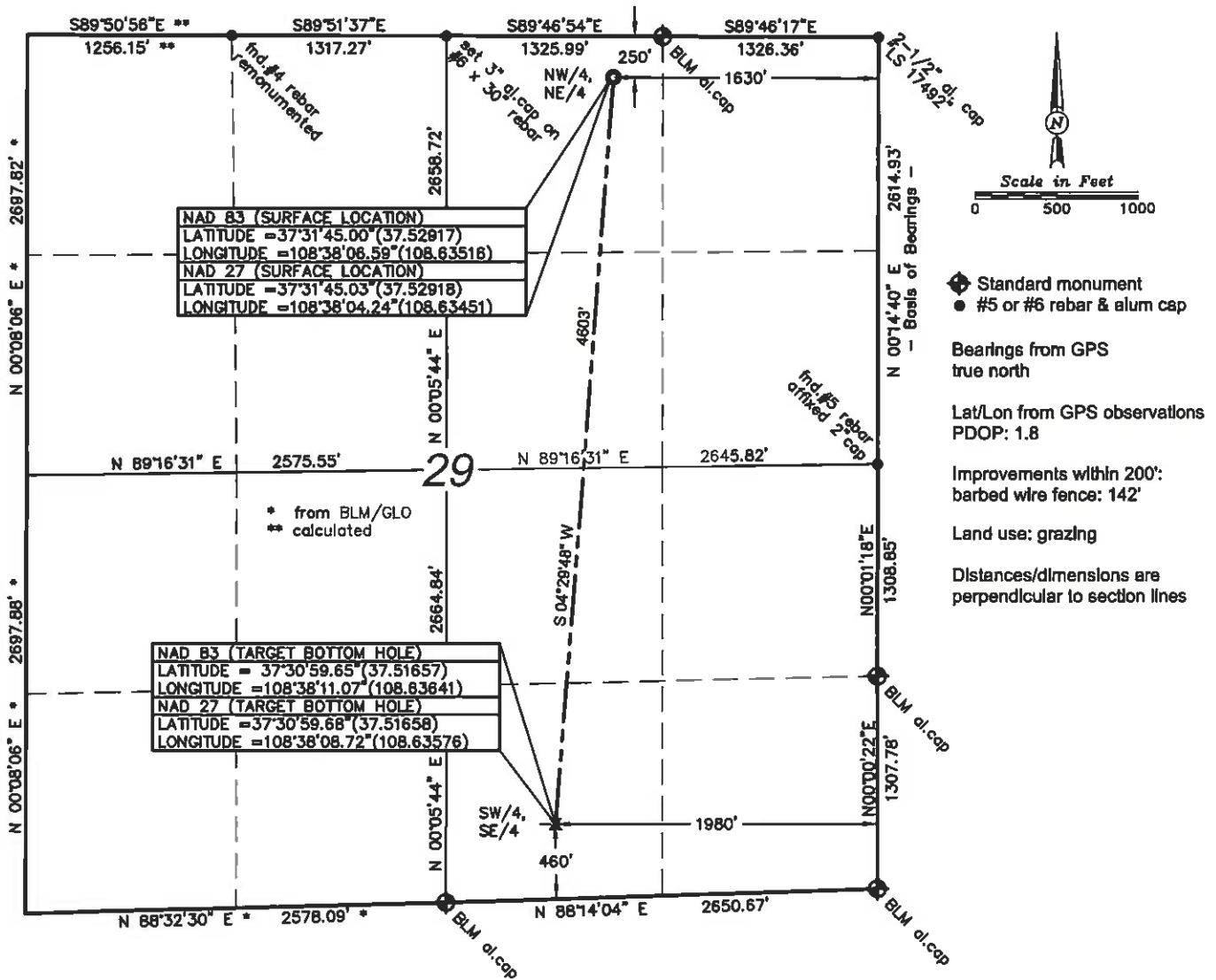


Well Location Plat



Bill Barrett Corporation Rose 2S-29-38-16

250' FNL & 1630' FEL (surface location)
 NW/4, NE/4, Section 29, T38N, R16W, NMPM
 Montezuma County, Colorado
 7027.2' ground. el. (NAVD88)
 460' FSL & 1980' FEL (bottom hole)
 SW/4, SE/4, Section 29, T38N, R16W, NMPM
 Montezuma County, Colorado

Date of Survey: 2/27/09
 Date of Plat: 3/15/09
 Revised: 3/23/09
 Revised: 5/21/09



KNOW ALL MEN BY THESE PRESENTS that I, GERALD G. HUDDLESTON, do hereby certify that this plat was prepared from field notes of an actual survey made by me or under my supervision and that the same is true and accurate to the best of my knowledge and belief.

ANDERSON
 ENGINEERING COMPANY, INC.
 (801) 972-6222
 www.andersoneng.com