



CEMENT BOND LOG

Mesa Wireline

Company ENCANA OIL & GAS (USA)
Well MORAN 27-1
Field PLATEAU
County MESA State COLORADO

Location: API #: 05077050250000

SW NW SEC 27 TWP 10S RGE 96W

SEC: 27 TWP: 10S RGE: 96W

Permanent Datum
Log Measured From W/O FLOOR = 5' Elevation 5731'
Drilling Measured From UNK

Other Services
NONE
Elevation
K.B. UNK
D.F. UNK
G.L. 5731'

Date 07 JUL Y 2007

Run Number ONE

Depth Driller 7636

Depth Logger 3279

Bottom Logged Interval 3229

Top Log Interval SURFACE

Open Hole Size N/A

Type Fluid WATER

Density / Viscosity ~8.34#

Max. Recorded Temp. N/A

Estimated Cement Top 2400

Time Well Ready N/A

Time Logger on Bottom N/A

Equipment Number ST0302W/RBT 03

Location GRAND JUNCTION

Recorded By D. ADAMS

Witnessed By S. SANDERS

Run Number

Bit From To

Size N/A

Weight N/A

From To

Size N/A

Weight N/A

From To

Size 13.375"

Weight 40#

Top SURFACE

Bottom 228

Size 8.625"

Weight 32#

Top SURFACE

Bottom 3750

<<< Fold Here >>>

All interpretations are opinions based on inferences from electrical or other measurements and we cannot and do not guarantee the accuracy or correctness of any interpretation, and we shall not, except in the case of gross or willful negligence on our part, be liable or responsible for any loss, costs, damages, or expenses incurred or sustained by anyone resulting from any interpretation made by any of our officers, agents or employees. These interpretations are also subject to our general terms and conditions set out in our current Price Schedule.

Comments

HALLIBURTON BRIDGE PLUG SET AT 3229' WITH 2 SACKS OF CEMENT ON TOP

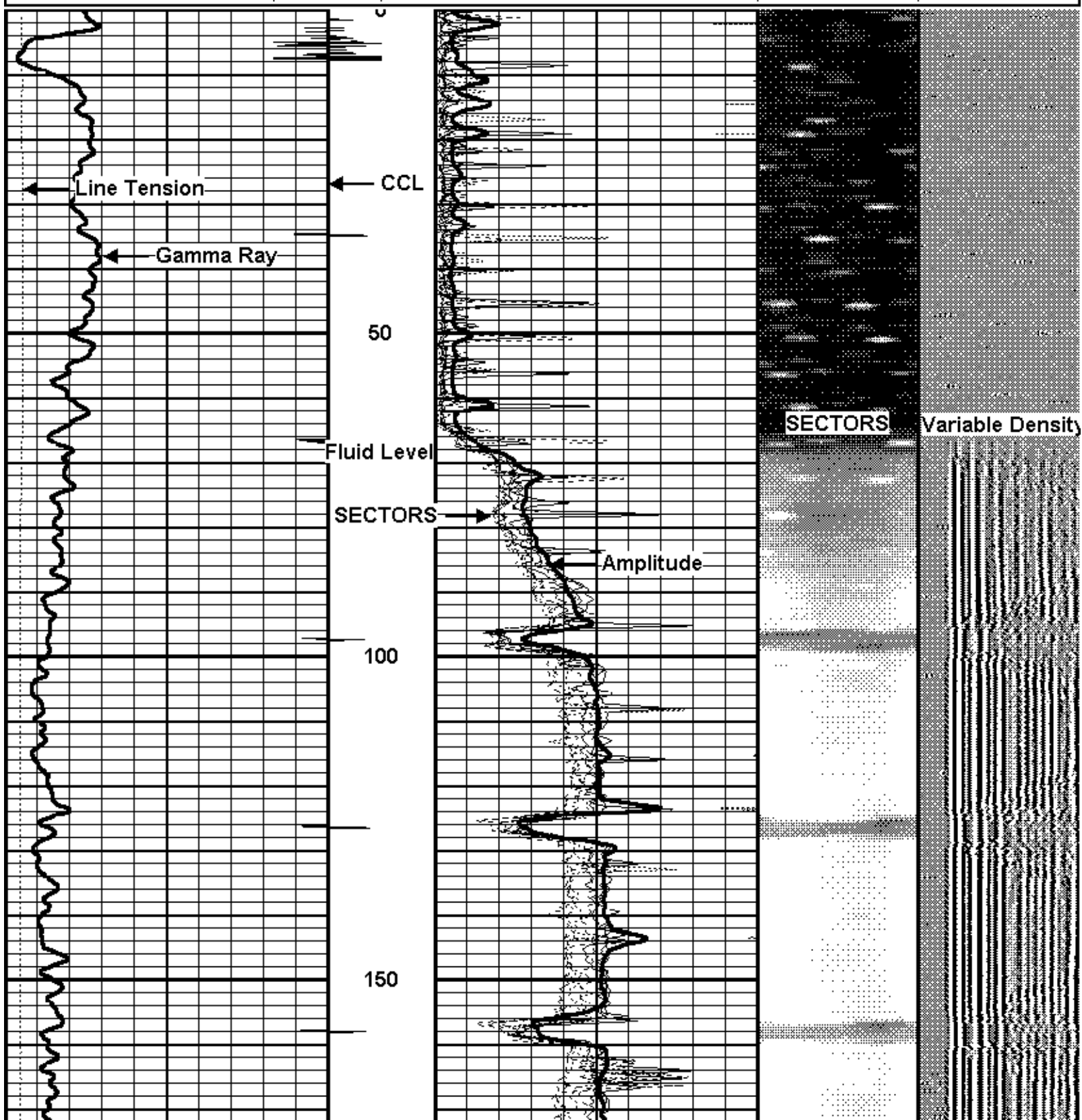
WE APPRECIATE YOUR BUSINESS, MESA WIRELINE LLC, GRAND JUNCTION CO. (970) 257-0

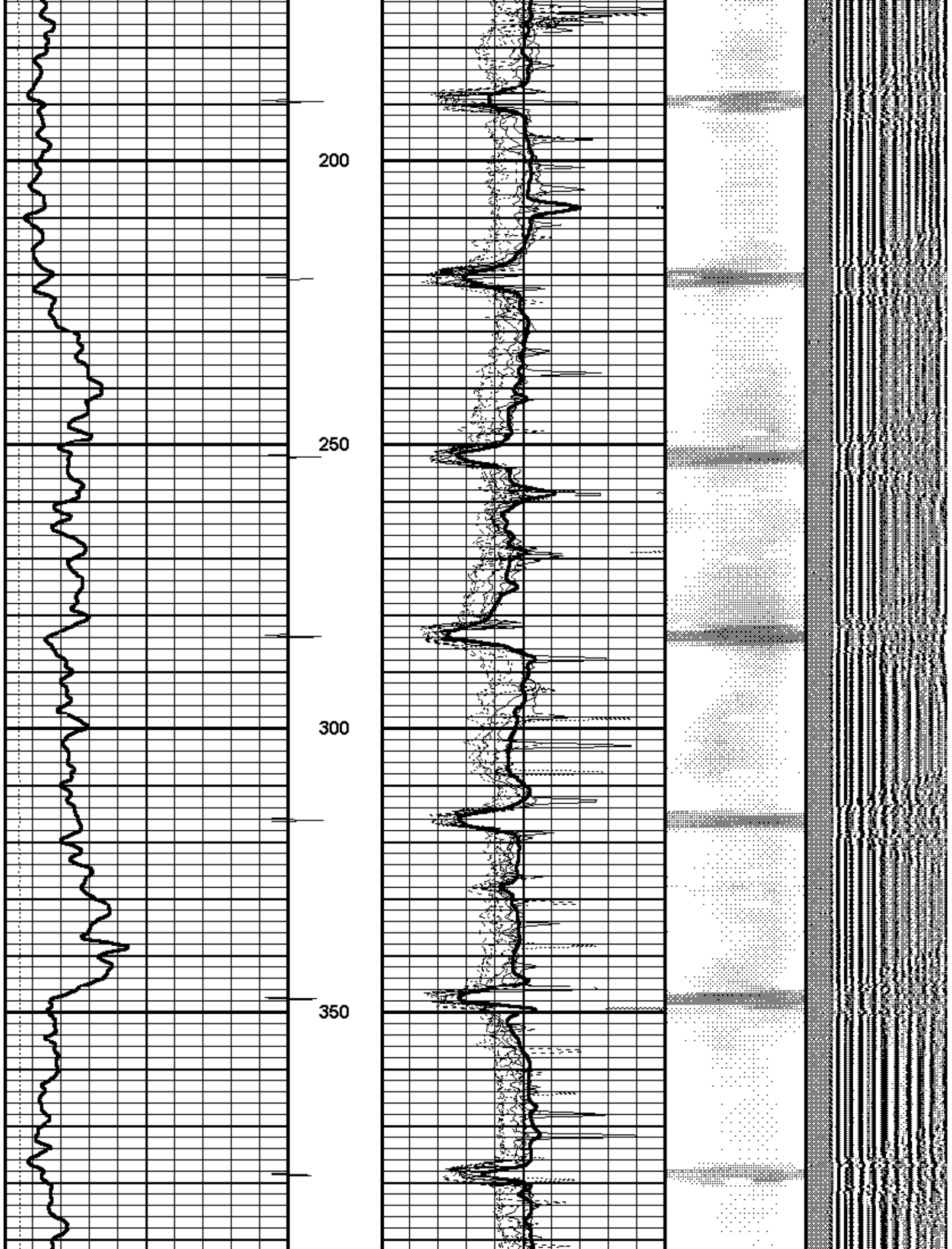


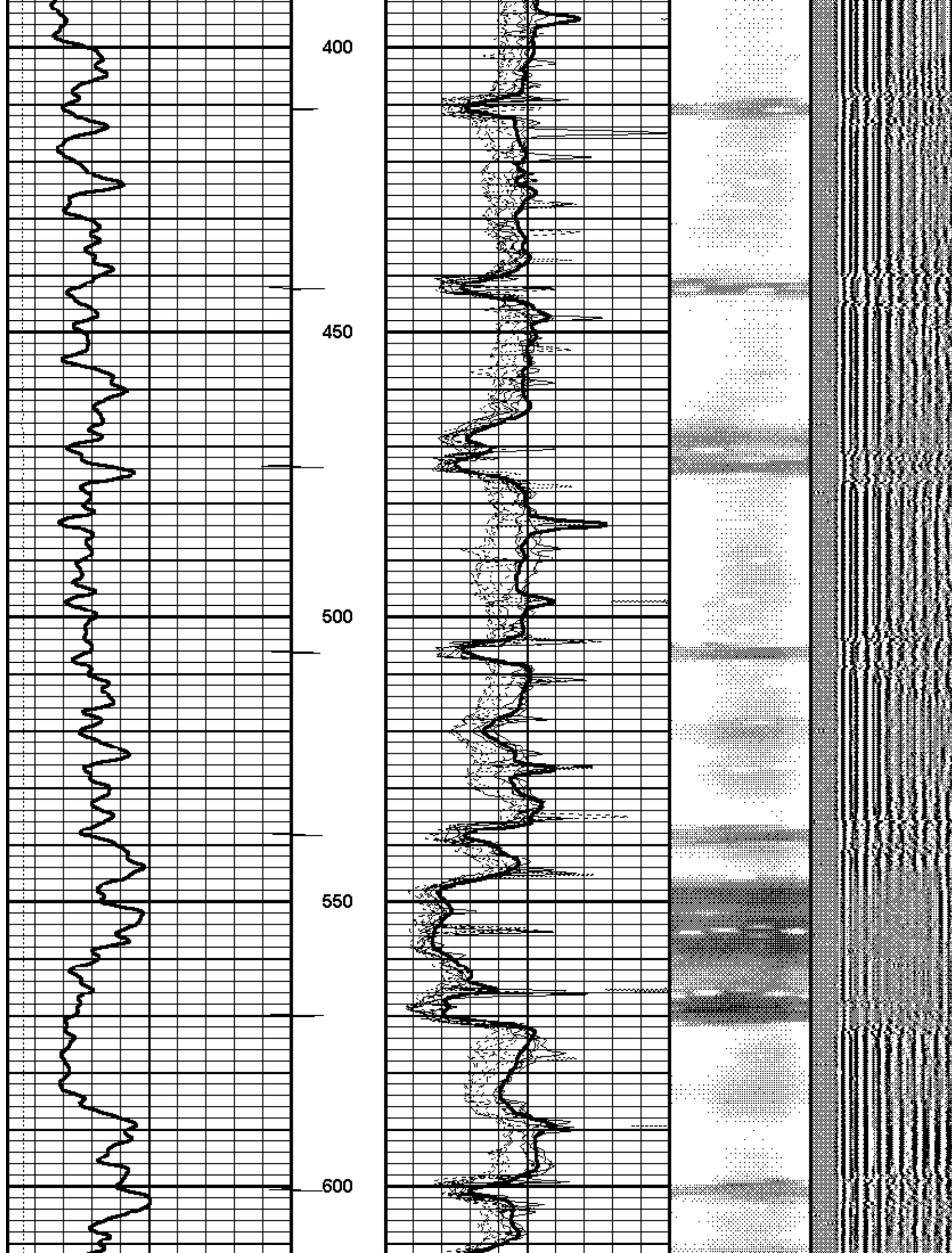
MAIN PASS 5" = 100'

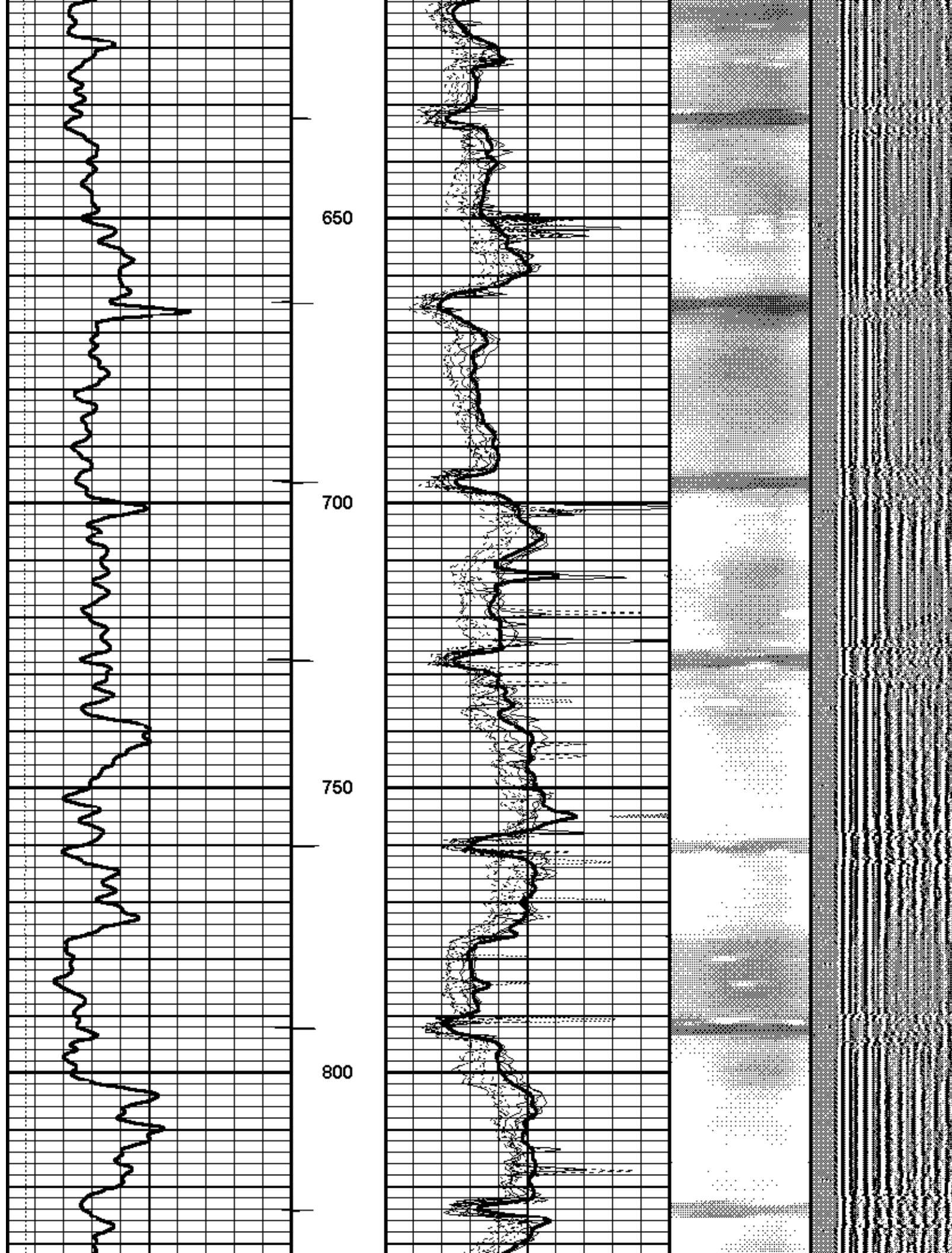
Database File: copy (2) of moran.db
 Dataset Pathname: pass33.1
 Presentation Format: rbtfinal
 Dataset Creation: Sat Jul 07 11:39:18 2007 by Calc Std Casedhole 06040
 Charted by: Depth in Feet scaled 1:240

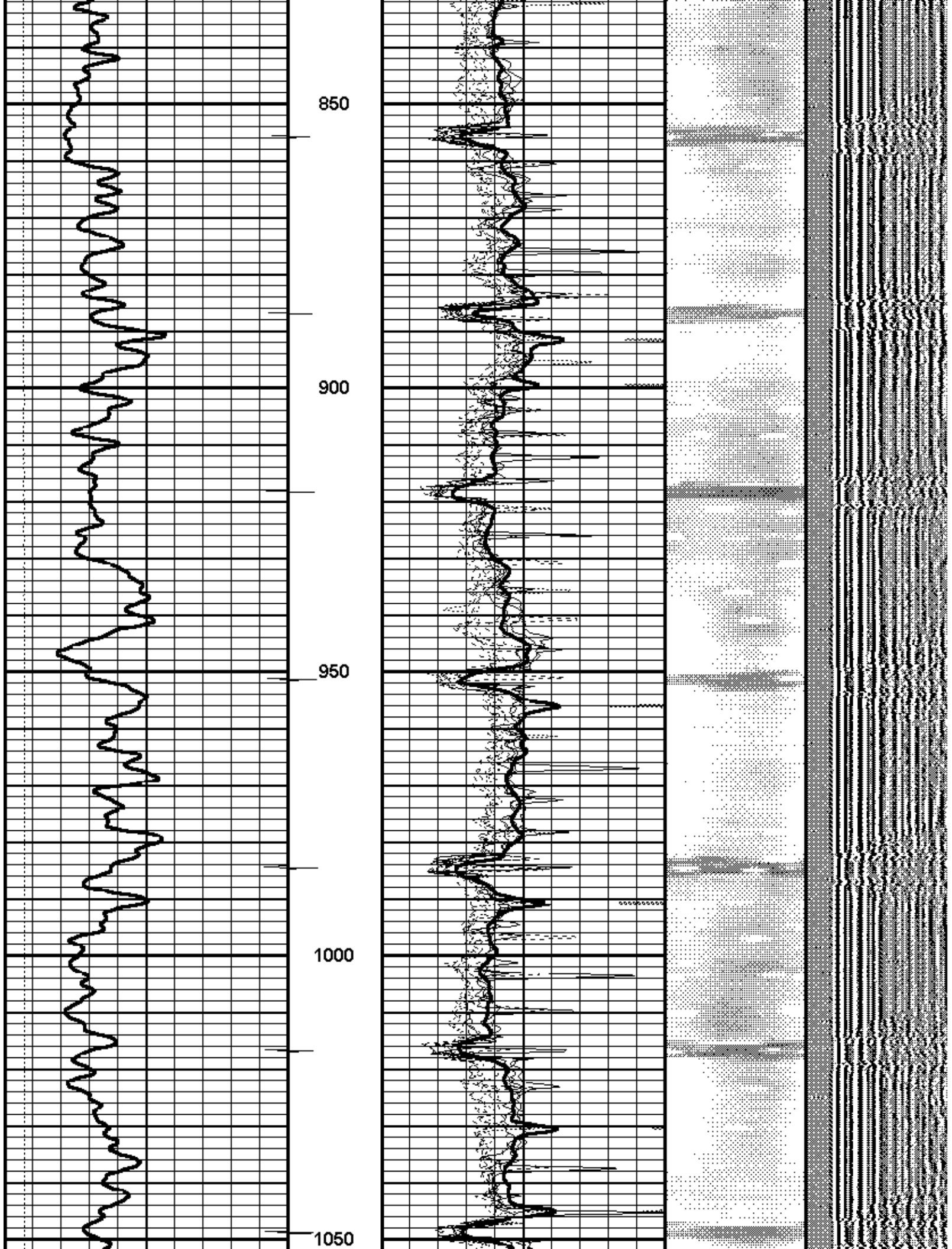
0	Gamma Ray (GAPI)	200	0	Amplitude (mV)	100	1	SECTORS	8	Variable Density	
0	LTEN (lb)	5000	0	TT3FT (usec)	250	0		70	200	1200
		CCL								

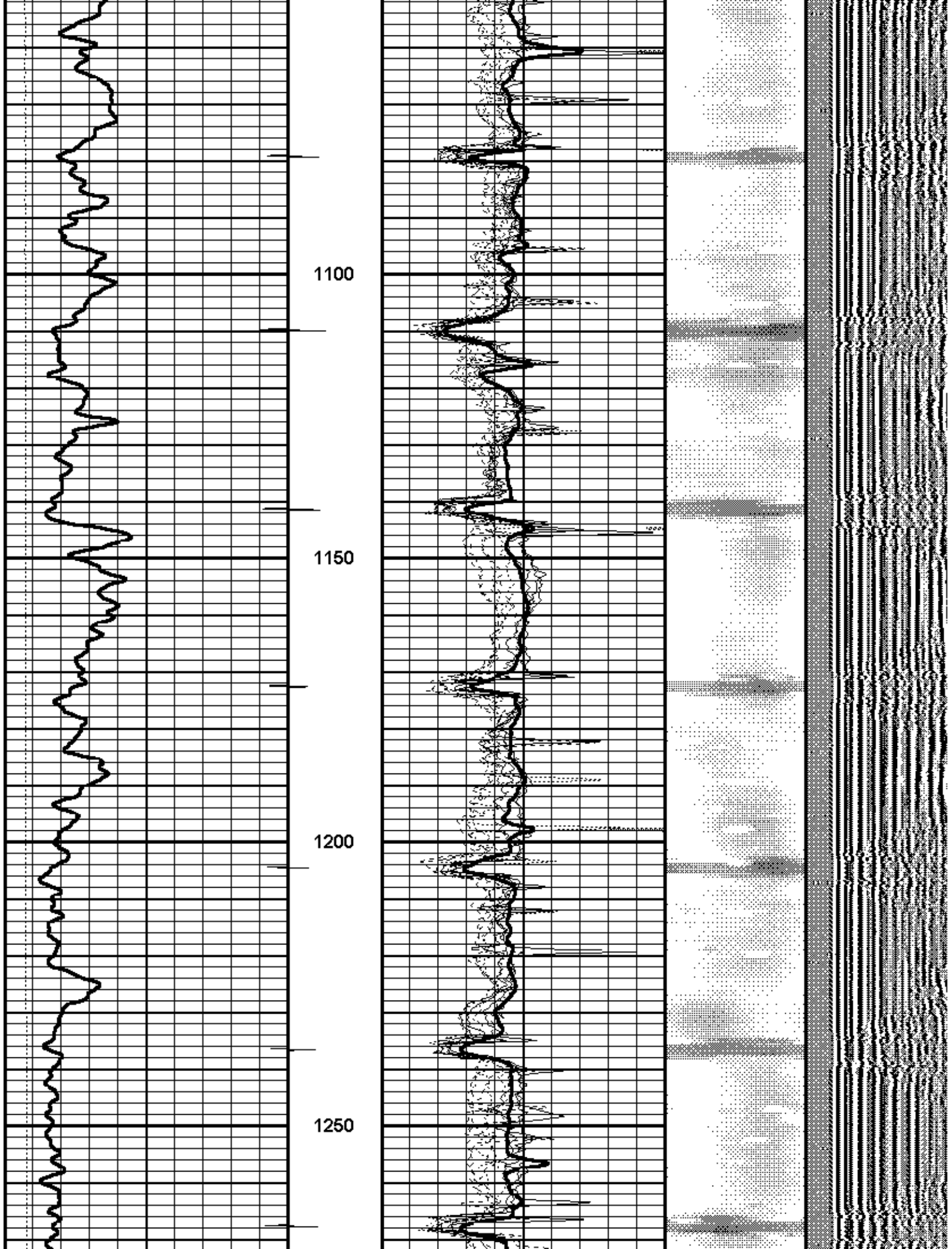


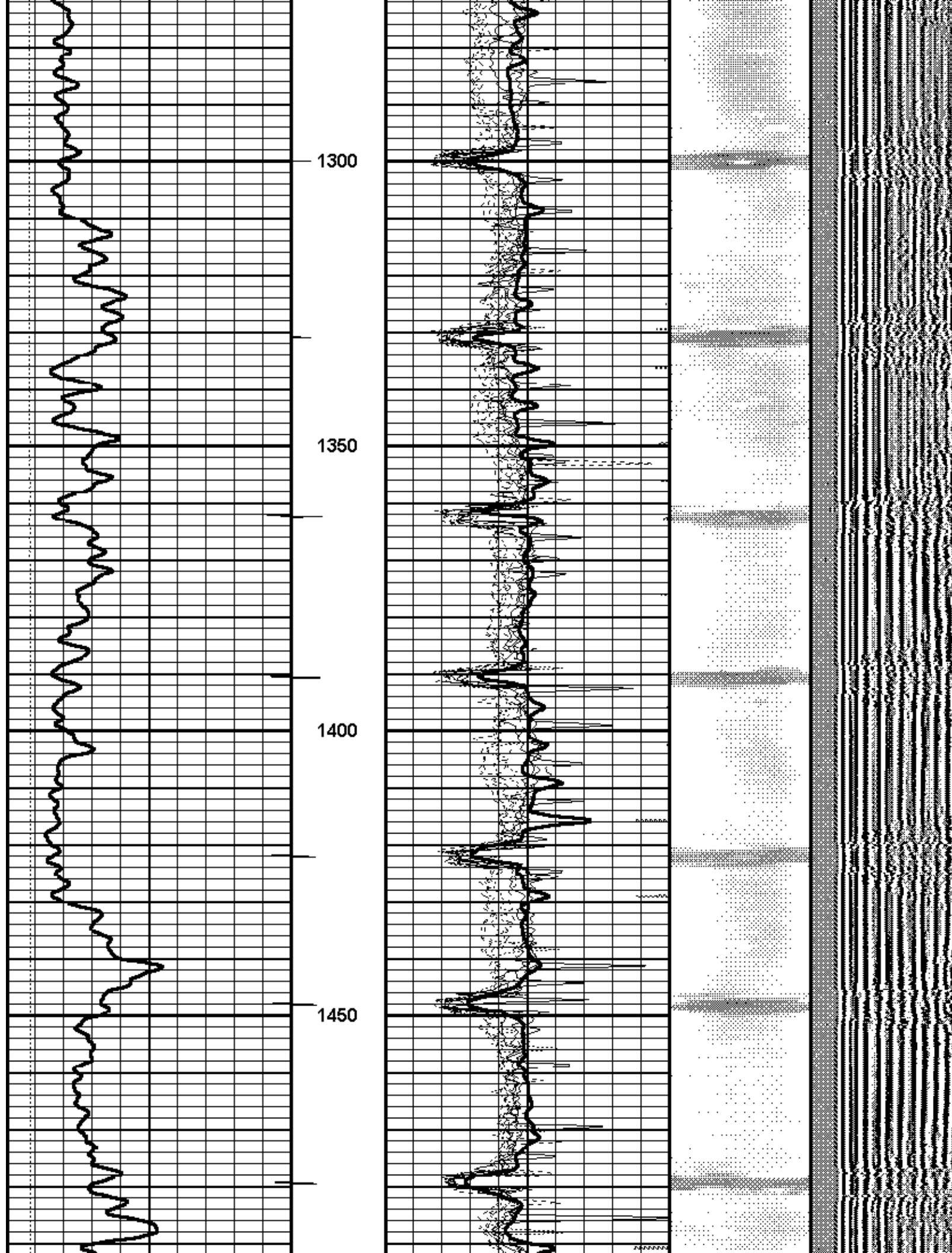


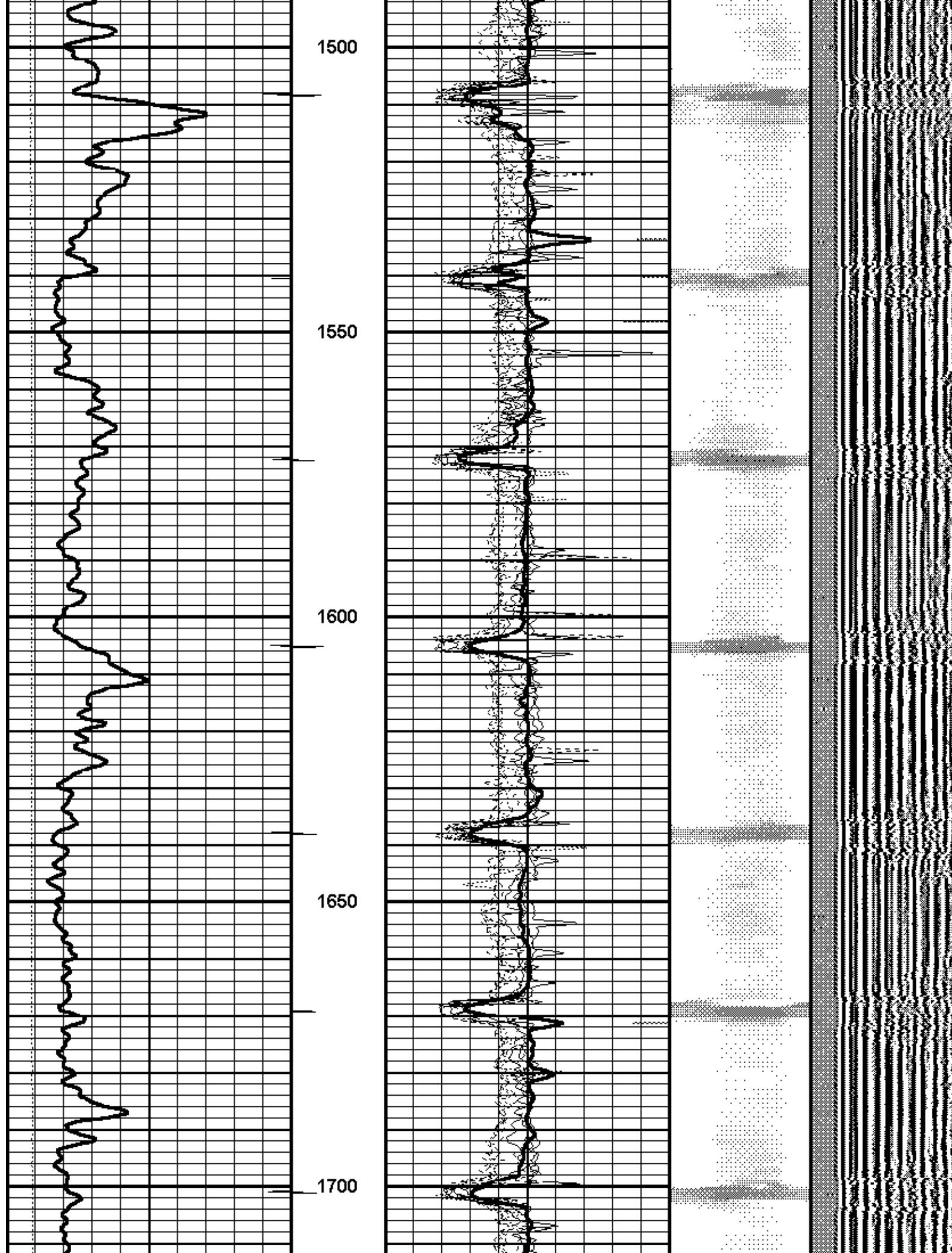


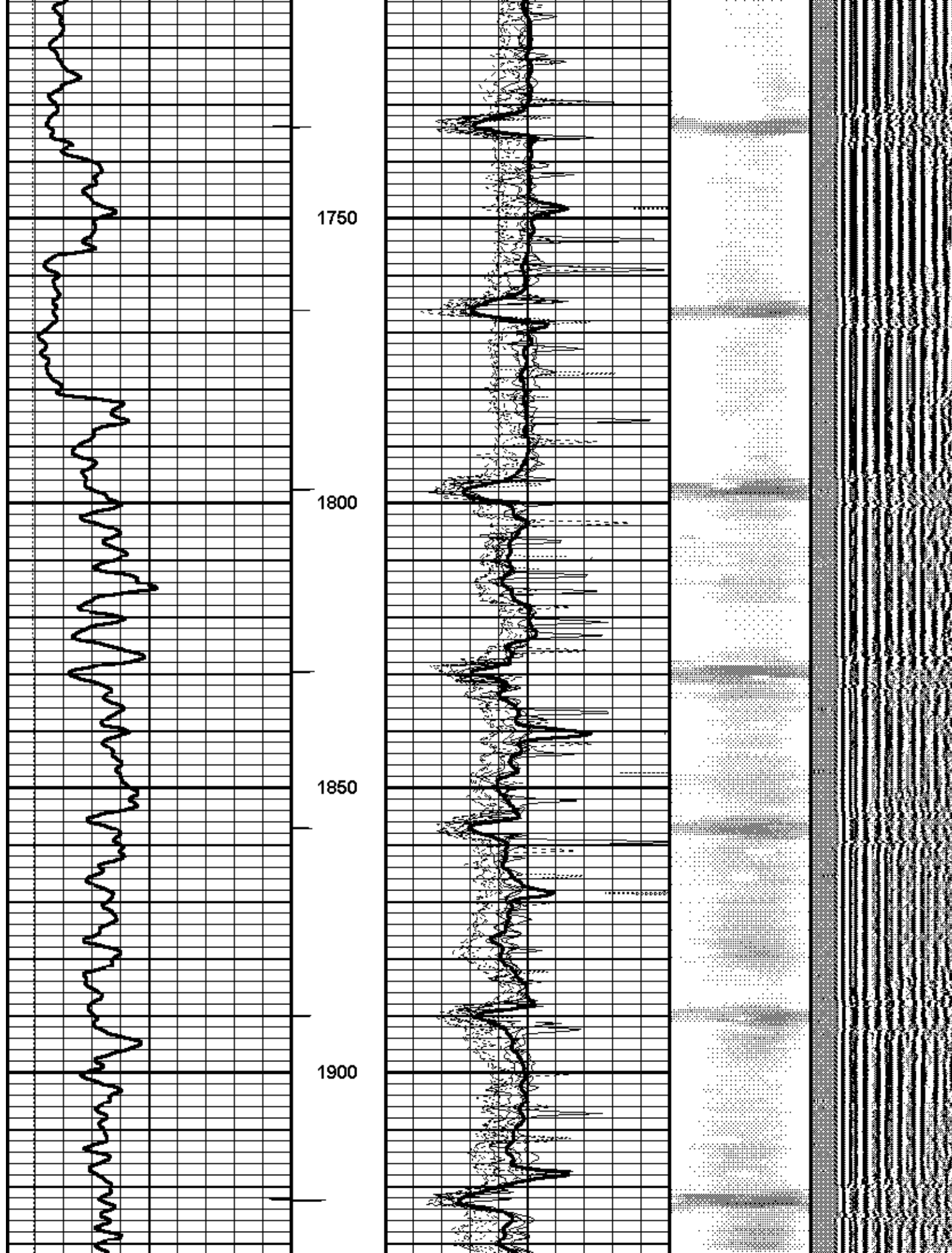


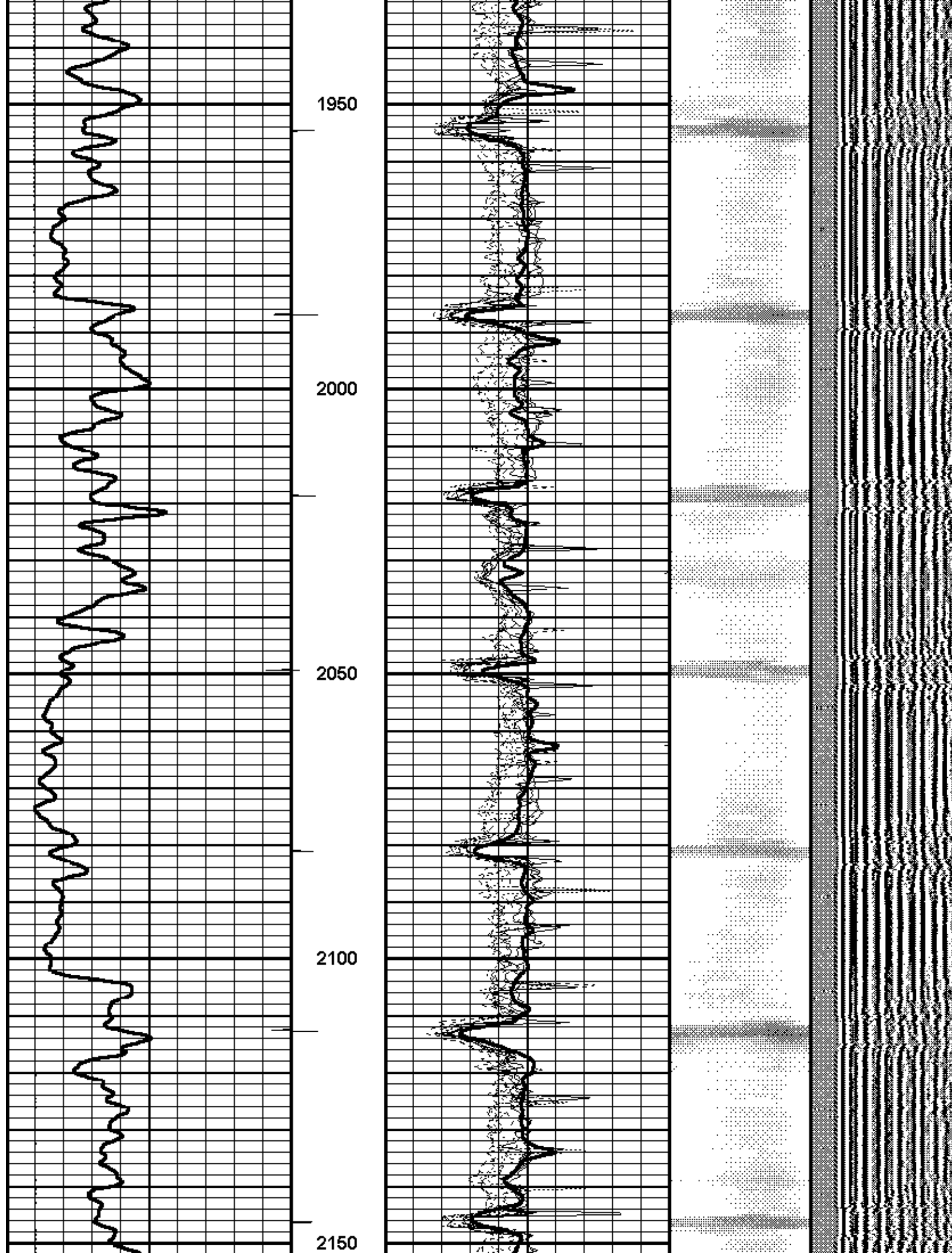


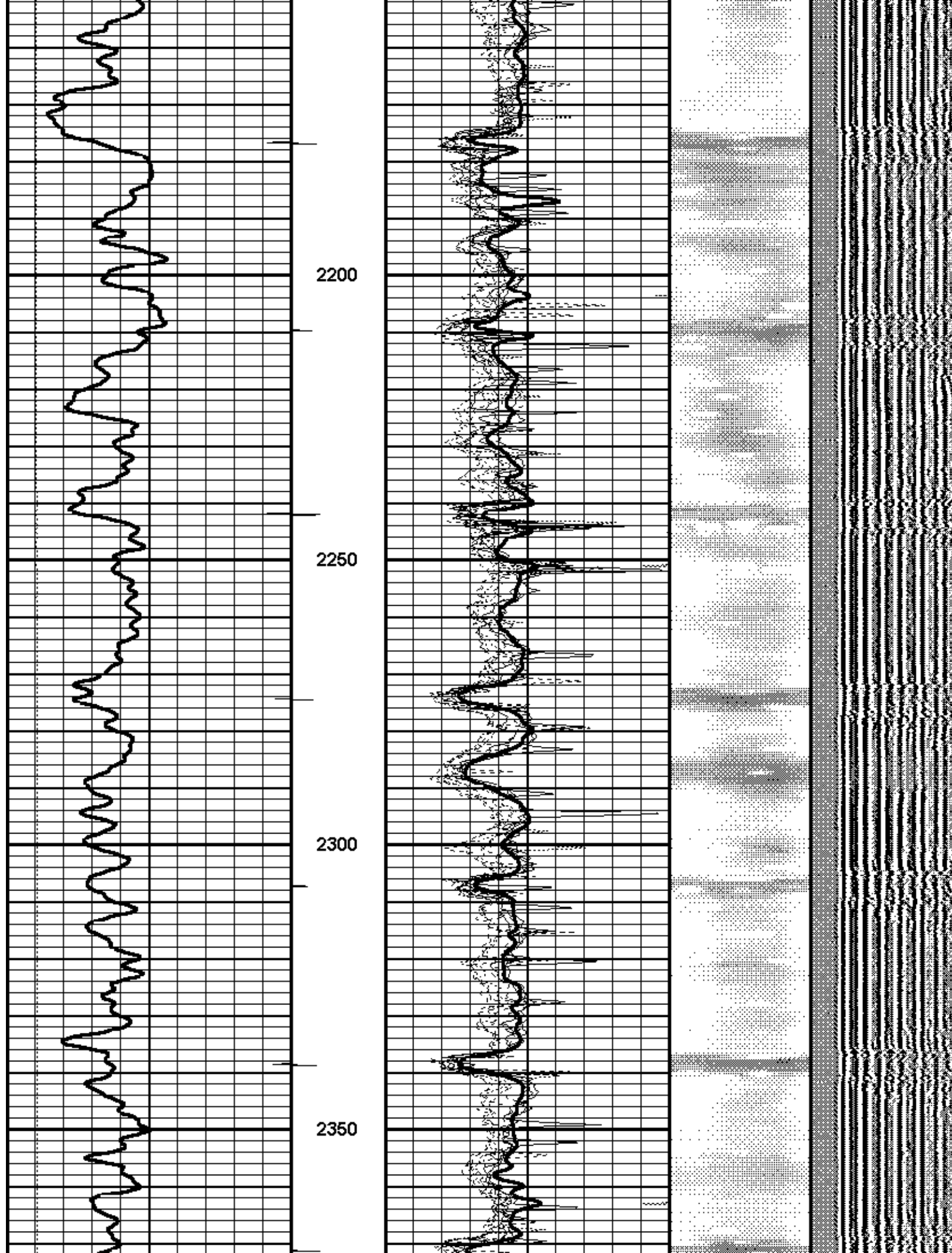


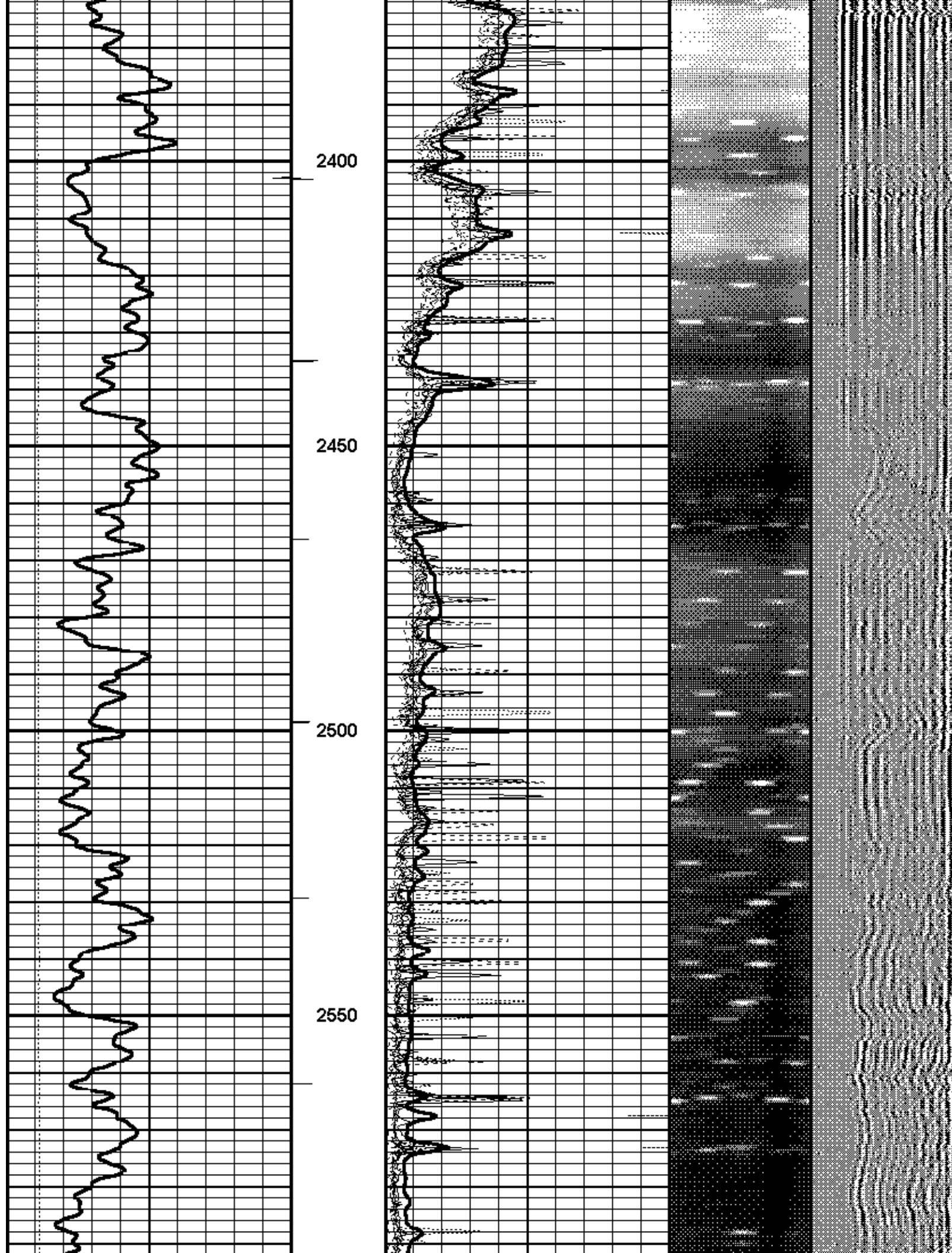


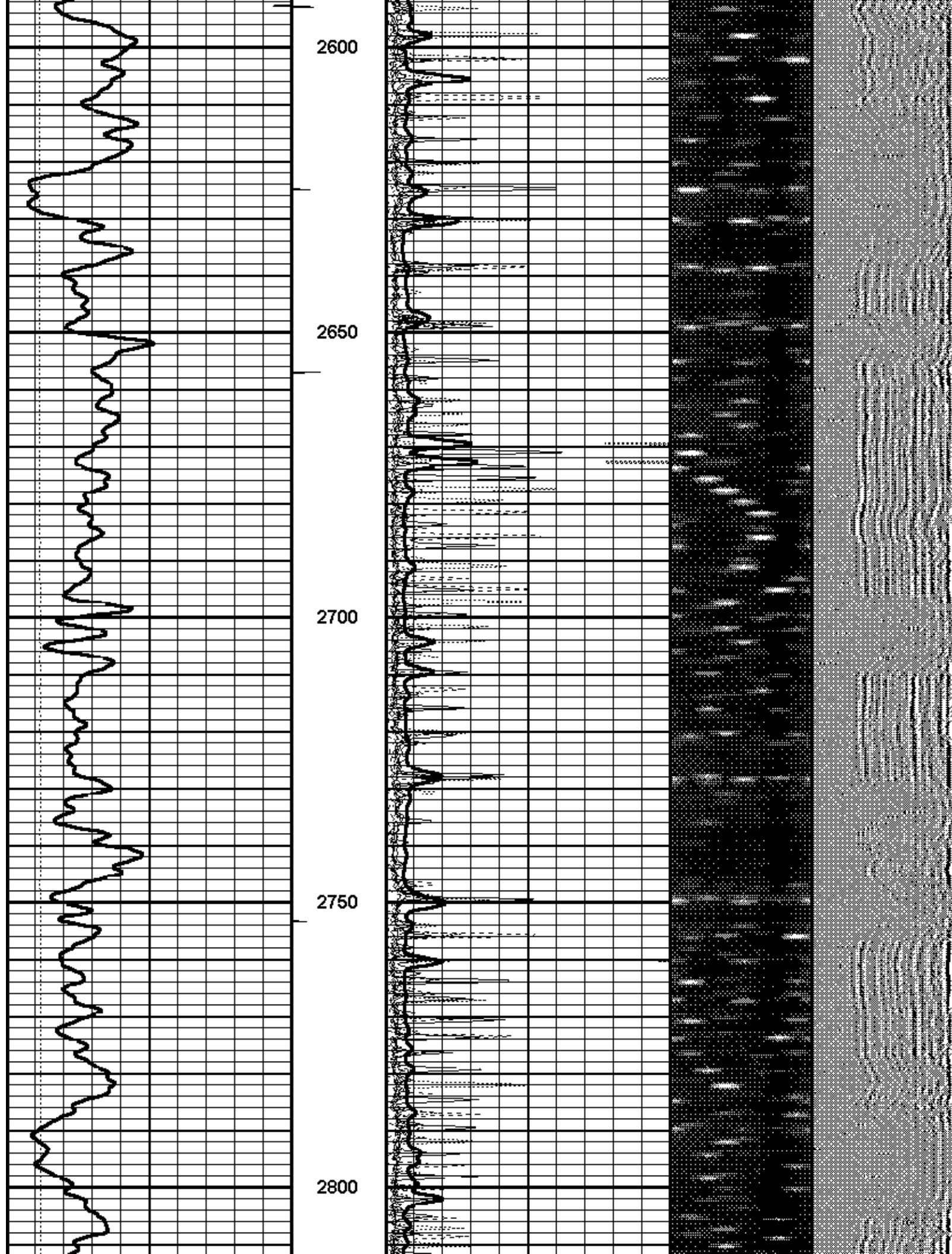


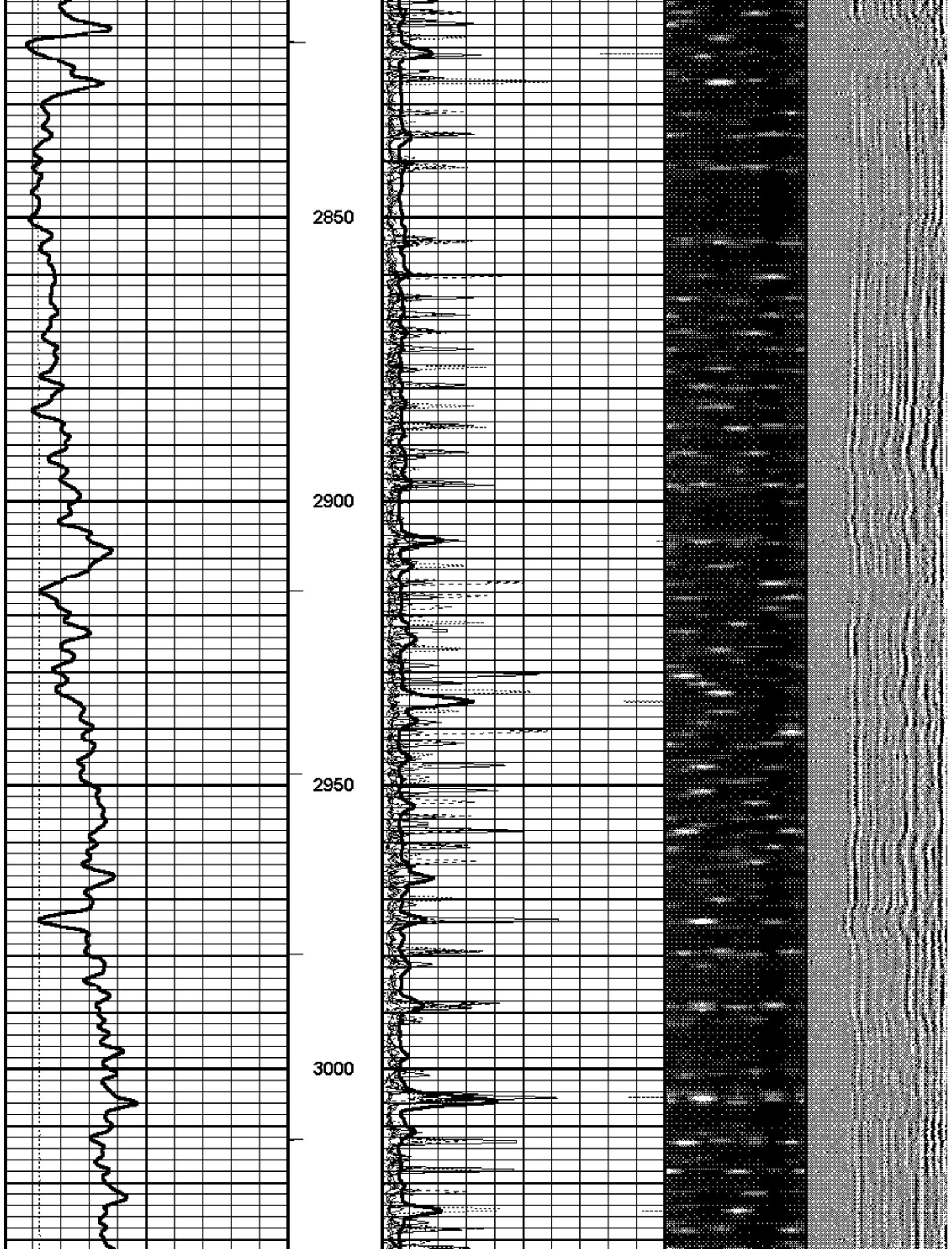


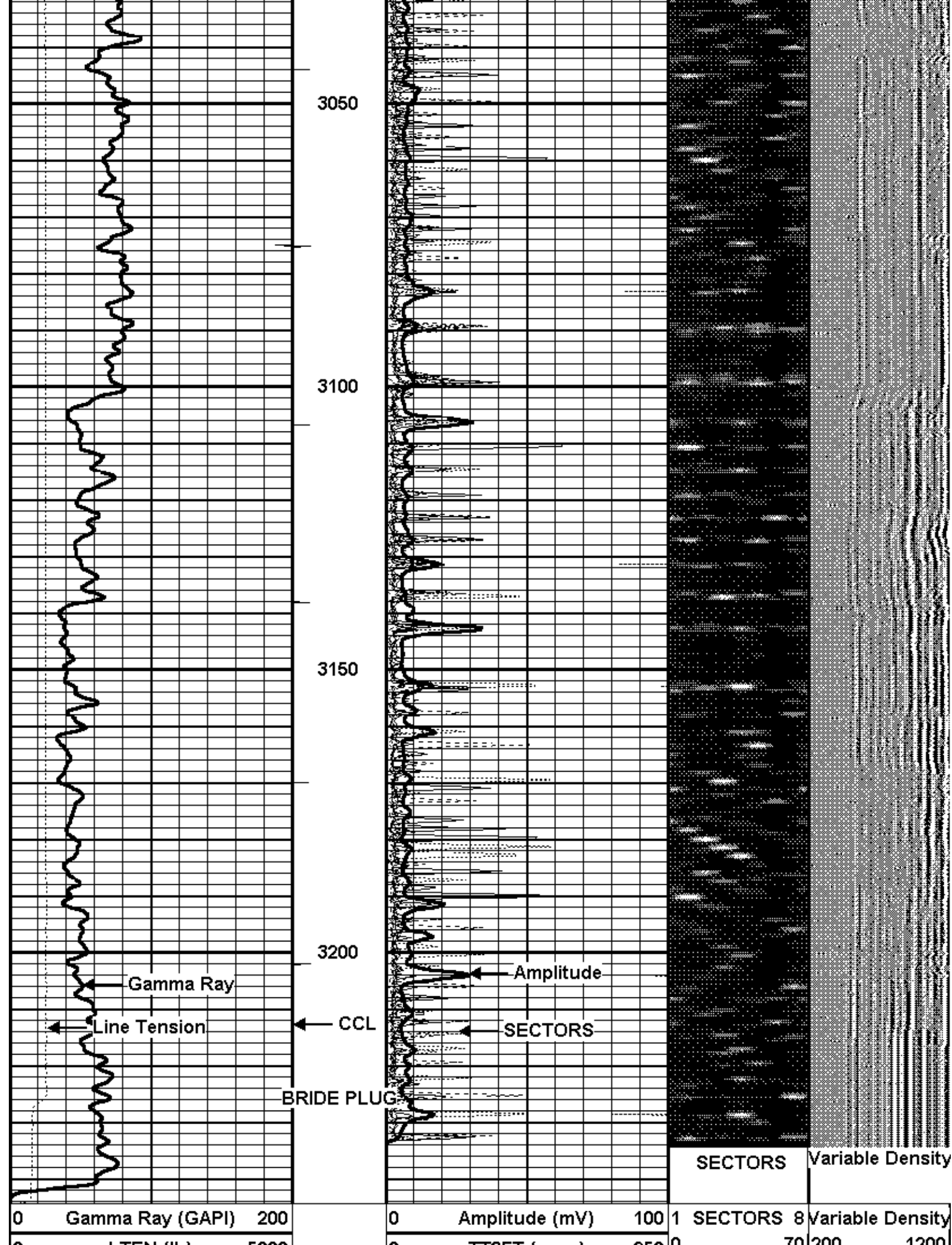












LTEN (lb)	5000	TT3FT (usec)	2500	70	200	1200
	CCL					



Company ENCANA OIL & GAS (USA)
Well MORAN 27-1
Field PLATEAU
County MESA
State COLORADO

Sensor	Offset (ft)	Schematic	Description	Len (ft)	OD (in)	Wt (lb)
CHD	20.77		TITAN	1.02	1.44	1.00
CCL	16.54		_SNDX_CCL-SNDX_3_13_CCL (000001) CSS Gamma Ray/CCL (CCL Section)	1.92	3.13	11.02
CENT	17.83		SONDEX	2.71	2.75	32.00
WVFS1	10.78		_SNDX_RBT-007 (000001) Radial Bond Tool - Analog 3 1/8	9.47	3.13	140.00
WVFS2	10.78					
WVFS3	10.78					
WVFS4	10.78					
WVFS5	10.78					
WVFS6	10.78					
WVFS7	10.78					
WVFS8	10.78					
WVFS5FT	9.78					
CENT	5.65		SONDEX	2.71	2.75	32.00

