

Revised
1/11/10
to Brian Potts

LEASE NUMBER -
Federal M.C. Hagood D-052265

12 POINT SURFACE USE PLAN

M.C. HAGOOD B 2

API# applied for with COGCC

LOCATED IN

RANGELY WEBER SAND UNIT

814' FNL & 2229' FWL (NE NW) Section 22, T2N, R103W, 6th PM

RIO BLANCO COUNTY, COLORADO

Revised location south to existing MC Hagood B 1A location

CHEVRON USA, Inc
MC HAGOOD B2

Revised- January 11, 2011

LEGAL DESCRIPTION: 814' FNL & 2229' FWL (NE NW) Section 22, T2N, R103W, 6th PM

1. EXISTING ROADS

See attached Topographic Map "A" and attached full Rangely Weber Sand Unit (COC 47675X) field map referenced as "ROAD MAP". Please note on "Addendum to Legal Plat" this location will be built just off the existing lease road.

To reach CHEVRON proposed MC HAGOOD B 2 location - Proceed west out of Rangely, Colorado on Colorado State Highway 64 approximately 8.7 miles, turn South on Chevron lease road, proceed 2600 feet to well location.

All of the improved surface roads in the area are maintained by Chevron or its subcontractors. This maintenance consists of some minor grade work for smoothing of road grades and for snow removal by road maintainers with dozer blades and other contractor's equipment as required.

Chevron will follow guidelines from BLM Gold book Road Maintenance page 30, "Maintenance activities normally required include monitoring, blading, surface replacement, dust abatement, spot repairs, slide removal, ditch cleaning, culvert cleaning, litter cleanup, noxious weed control, and snow removal. When applicable, specific areas shall be identified in the road maintenance plan for disposal of slide material, borrow or quarry sites, stock piles, or other uses that are needed for the project. Key maintenance considerations include regular inspections; reduction of ruts and holes; maintenance of crowns and out slopes to keep water off the road; replacement of surfacing materials; clearing of sediment blocking ditches and culverts."

Copies of BLM Manual 9113 have been distributed to Chevron facility engineers and Chevron facility reps to utilize for any new road construction and maintenance standards

2. PLANNED ACCESS ROAD

See Topographic Map "B".

The planned access road is along an existing lease road - no new road will need to be constructed. The lease road is relatively flat - no major cuts, a center crown to the road will allow for drainage to side ditches that will be excavated to a depth of 1 foot minimum below the finished road surface. There will be no need for any road structures such as culverts or bridges. Pit run will be used for road surfacing material. Pit run is ordered and supplied by Ace West Trucking Inc (970-675-2753) 15762 Hwy 64, Rangely, CO 81648 and / or Urie Rock Company (970-675-5766) 2424 East Main, Rangely, CO 81648. There are no fences on the property. Installing gates, cattle guards, or cutting fences will not be required. The terrain that is traversed by this road is relatively flat and is vegetated with sparse amounts of sagebrush and grasses. Turn outs will not be required.

Approval shall be requested to continue operations should the surface become saturated to a depth of three (3) inches.

3. EXISTING WELLS See Topographic Map "C" with attached well list.

There are numerous wells within a one mile radius of this location. COGCC mapping shows a total of 52 active wellbores in the one mile radius. Attached is a full list of all wells within the one mile radius, list is from the COGCC website.

4. LOCATION OF EXISTING AND PROPOSED FACILITIES

There will be ONE flow line (see TOPO D). This line will transport hydrocarbon fluids from the new well to existing pipeline east of wellsite. This flow line would consist of 4 inch fiberglass pipe rated at 1000 psi. This line would run about 1592' feet in length would be constructed and installed in a trench, offset (for safety) and parallel to an existing line. Please see the "Addendum to Legal Plat", existing pipeline is highlighted in green, proposed pipeline is highlighted in yellow. A typical right of way would be 20 foot either side of staked markers at a depth of 42 inches. The right of way will be fully reclaimed to current BLM specifications and stipulations. No additional Sundry notification will be submitted for this pipeline. Flowline approval will be assumed with the approval of MC Hagood B2 3160-3.

All existing facilities maps are on file with the BLM - Meeker office. A complete set of the oil (FLOWLINES), water (PROD. WATER) and gas (LP GAS GATHERING) gathering system maps can be resubmitted if requested.

All the produced fluids will be transported via pipeline to the collection station (Collection Station #4) to the southeast.

All permanent facilities placed on the location will be painted Carlsbad Canyon Brown to blend with the natural environment. The well cellar will be covered with steel grating and no hazards will exist for livestock or wildlife.

Updated geospatial data was emailed to Briana Potts with BLM on 11/16/2010.

5. LOCATION OF AND TYPE OF WATER SUPPLY AND FUEL GAS

Fresh water required for boilers and other needs will be trucked from Chevron's Main Water Treatment Plant. Chevrans Main Water Treatment Plant is located at NESE Section 32,T2N,R102W, 6TH P.M. A quarter of a mile off Colorado Hiway 64 on a Chevron owned lease road. Water will trucked from the Water Plant 4 and half miles West on Hiway 64 to the MC Hagood location lease road turn off to the South, then 1/4 mile to the well site. Please see attached "Fresh Water Access Route" map, the route is highlighted in yellow. The estimated amount of water to be used during construction (minimal - 100 bbls), drilling (3000 bbls), fracing (10,000 bbls) and dust abatement (1500 bbls).

Diesel fuel for drilling will be kept on location in a properly installed above ground diesel tank. (See "TYPICAL RIG LAYOUT - FUEL TRAILER"). Containment area will be engineered to contain 110% of calculated volumes.

There will be no water well drilled on the location site.

6. SOURCE OF CONSTRUCTION MATERIALS

No additional construction materials are planned at this time, if muddy conditions exist at the time of construction, extra gravels, sand, or road base will be acquired from Ace West Trucking Inc, 15672 US Hwy 64, Rangely 675-2753 gravel pits, which are privately owned or leased from the Bureau of Land Management (BLM).

7. METHODS FOR HANDLING WASTE DISPOSAL

A closed - loop drilling system will be utilized, using a cuttings catch pit, dewatering system, centrifuge system and additional fluid storage. The cuttings pit (reserve pit as indicated on Figure #3) will be 11 feet deep, 30 feet wide, and 140 feet long with 10 foot wide bench with a 1:1 slope. The cuttings will be placed in a pit on site and buried.

The construction of this cuttings pit will be constructed to BLM Gold Book standards. No liner will be needed for this cuttings pit. Cuttings will be buried in the cutting pit, with 3 feet of fill. Prior to burial of cuttings, if any (none anticipated) liquid oil or water will be trucked to the Chevron Main Water Plant, to be filtered, separated and water will be re- injected into the Weber formation. Oil will be skimmed at the Main Water Plant and pipelined to an oil gathering collection station. Minimal materials will be taken to RNI (see contact information below) for disposal (such as frac sand cleaned out during completion). The pits will be fenced with 32" to 48" high woven wire to protect wildlife and domestic animals. Netting will be installed to prevent access by migratory birds. After the completion rig finishes, and the reserve pit is covered then the surface is contoured to conform to surrounding terrain.

Any waste products will be handled by RN Industries, 244 West Hwy 40, Roosevelt, Utah 84066 Dale Price 435-722-2800.

Trash will be confined in a covered container. After the rig is moved off the location the well site will be cleaned and all refuse removed by Rangely Trash Service 675-2878, and hauled to the approved landfill in Rio Blanco County.

A portable toilet will be supplied for human waste. Redi Services LLC, 235 County Rd 15, Meeker Colorado 970-878-4444 services toilets and removes portable toilet waste.

8. ANCILLARY FACILITIES

There are no ancillary facilities planned for at the present time and none foreseen in the near future.

9. WELL SITE LAYOUT - See Figure #1

The White River Resource Area Manager shall be notified 24 hours in advance before any construction begins on the proposed location site.

Weldon's Construction (Bret Weldon 435-789-3324) company will be contracted to build well pad using graders, dozers and dump trucks, any extra gravels, sand, or road base will be acquired from Ace West Trucking Inc, 15672 US Hwy 64, Rangely 675-2753 gravel pits. Please see attached "Site Map and Site Specific Stormwater Management Plan (SWMP)" Site map indicates the topsoil stock pile area to be seeded with BLM approved mix, and placement of diversion ditch w/ check dams. Best Management Practices, are outlined on the SWMP, along with the estimated surface disturbance.

Please note there are no drilling rig anchors planned for this drilling location. Rig anchors will be installed after the well is drilled and the drilling rig leaves well site. Placement of the anchors to be determined by Benco Anchor Service Company based on well site soil conditions and the traffic flow to the new well and completion rig specifications.

10. PLANS FOR RESTORATION OF SURFACE

Plan for cutting pit reclamation - Cuttings will be buried in the cutting pit, with 3 feet of fill. Prior to burial of cuttings, any liquid oil or water will be trucked to the Chevron Main Water Plant. Test will be performed to insure soil meets COGCC 910-1 standards and all requirements stipulated in COGCC Rule 1003.d..

Clean up and rehabilitation operations will begin as soon as the well is completed and within the time frames and requirements established under COGCC Rules 1003 and 1004 for Interim and Final Reclamation.

Plan for interim reclamation see Figure #5- Interim reclamation consists of minimizing the footprint of disturbance by reclaiming those portions of the well site not needed for production operations. All disturbed areas affected by drilling or subsequent operations, except areas reasonably needed for production operations, shall be reclaimed as part of the interim reclamation process. The portion of the well site not needed for operations and safety purposes is to be re-graded to a final or intermediate contour that blends with the surrounding topography as much as possible. In addition, pad reclamation is accomplished by replacing stockpiled top soil, construction of sediment and erosion controls, and seeding of disturbed areas to reestablish cover vegetation. The access roads will be upgraded and maintained as necessary to prevent soil erosion, and accommodate year round traffic.

Sediment controls will typically dominate the early stages of reclaiming disturbed areas impacted by construction. As the reclamation work proceeds and the contour of the site are completed, more permanent structural and non-structural BMPs will be implemented to control erosion and re-establish vegetation.

Selection of BMPs is dependent on site specific conditions including soil types, topography, and other environmental factors including proximity to surface waters and surrounding vegetation. A summary of the BMPs typically utilized is provided in the attached Appendix. The attachment includes information on specific BMPs including where and when to use them, their limitations, along with construction details and maintenance requirements.

Re-vegetation efforts will include re-contouring disturbed areas not needed for well production to blend with surrounding topography and re-spreading topsoil to an adequate depth. The seedbed will be prepared by disking following the natural contour. Drill seed on contour at a depth no greater than 1/2 inch. In areas that cannot be drilled, broadcast at double the seeding rate and harrow seed into soil. Certified seed - BLM approved - as represented below - will be used..

SEED KIND: ALKALINE SLOPES / CLAYEY SALTDDESERT MIX (Arkansas Valley Seed)			
Kind & Variety:	Pure%	Germ%	Origin
WESTERN W/G ABBIBA	23.87	95	WA
PUBESCENT W/G LUNA	23.14	98	SD
CRESTED W/G NORDAN	19.33	88	CAN

RUSSIAN WILD RYEGRASS, VINALL	17.72	96	CAN
ANNUAL SUNFLOWER	12.32	92	CO
Crop / Inert/ Weed	3.63	(see copy of seed bag tag attached)	

Re-vegetation efforts will also include the treatment of weeds by a contracted weed sprayer, Rocky Mountain Weed Management, 970-675-5656. The site will be kept free of State listed A&B noxious weeds and weeds/invasive species up until the Final Reclamation of the location is attained and approved..

All Storm Water Discharge Permitting Regulations and BMP's currently required by the State of Colorado will be strictly complied with, including all inspection and ongoing BMP maintenance requirements. To minimize sedimentation of drainage channels and wetlands during the interim period between construction activity and final reclamation, temporary erosion and sediment control measures should be applied." Secondary containment area will be utilized in chemical and product storage areas and engineered to handle 150% of calculated volumes per Chevron policy.

Plan for final reclamation: Following the production life of the well site, all production facilities will be removed and the site reclaimed and contoured to conform to the surrounding terrain. All excavations and pits must be closed by backfilling when they are dry and free of waste. The White River Resource Area Manager will be notified at least 24 hours prior to commencing reclamation work.

The well(s) will be plugged and abandoned in accordance with COGCC requirements to protect freshwater aquifers. Chevron will notify the WRFO 24 hours prior to any final reclamation activities. Rig anchors will be pulled and removed from location. The access road will be reshaped as closely as possible to the original contour, covered with topsoil, and reseeded.

Storm water BMPs will be utilized in the reclamation efforts to control sediment runoff and erosion. Selection of BMPs is dependent on site specific conditions including soil types, topography, and other environmental factors including proximity to surface waters and surrounding vegetation. A summary of the BMPs typically utilized is provided in the attached Appendix. The attachment includes information on specific BMPs including where and when to use them, their limitations, along with construction details and maintenance requirements.

The well pad will be restored and re-vegetated as soon as practicable. Topsoil is to be re-spread over the entire disturbed site to ensure successful re-vegetation. The top soiled site will be prepared to provide a seedbed for re-establishment of vegetation. The seedbed will be prepared by disking following the natural contour. Drill seed on contour at a depth no greater than 1/2 inch. Fall seeding must be completed after September 1, and prior to prolonged ground frost.

Final reclamation (COGCC Rule 1004) will be completed once a uniform vegetative cover has been established that reflects pre-disturbance or reference area forbs, shrubs, and grasses with a total percent plant cover of at least 80% of pre-disturbance levels.

11. SURFACE OWNERSHIP

A check of the records indicates that the surface owner is Bureau of Land Management. Local BLM office address – BLM White River Field Office, 220 East Market Street, Meeker, Colorado 81640, 970-878-3800

12. OTHER INFORMATION

a) The Chevron will contact either the petroleum engineer or petroleum engineering technician 24 hours prior to the following operations:

- Construction of well site
- spudding (including dry hole digger or rat hole rig)
- running and cementing of all casing strings
- pressure testing of BOPE or any casing string
- Surface reclamation work.
- commencing completion operations.

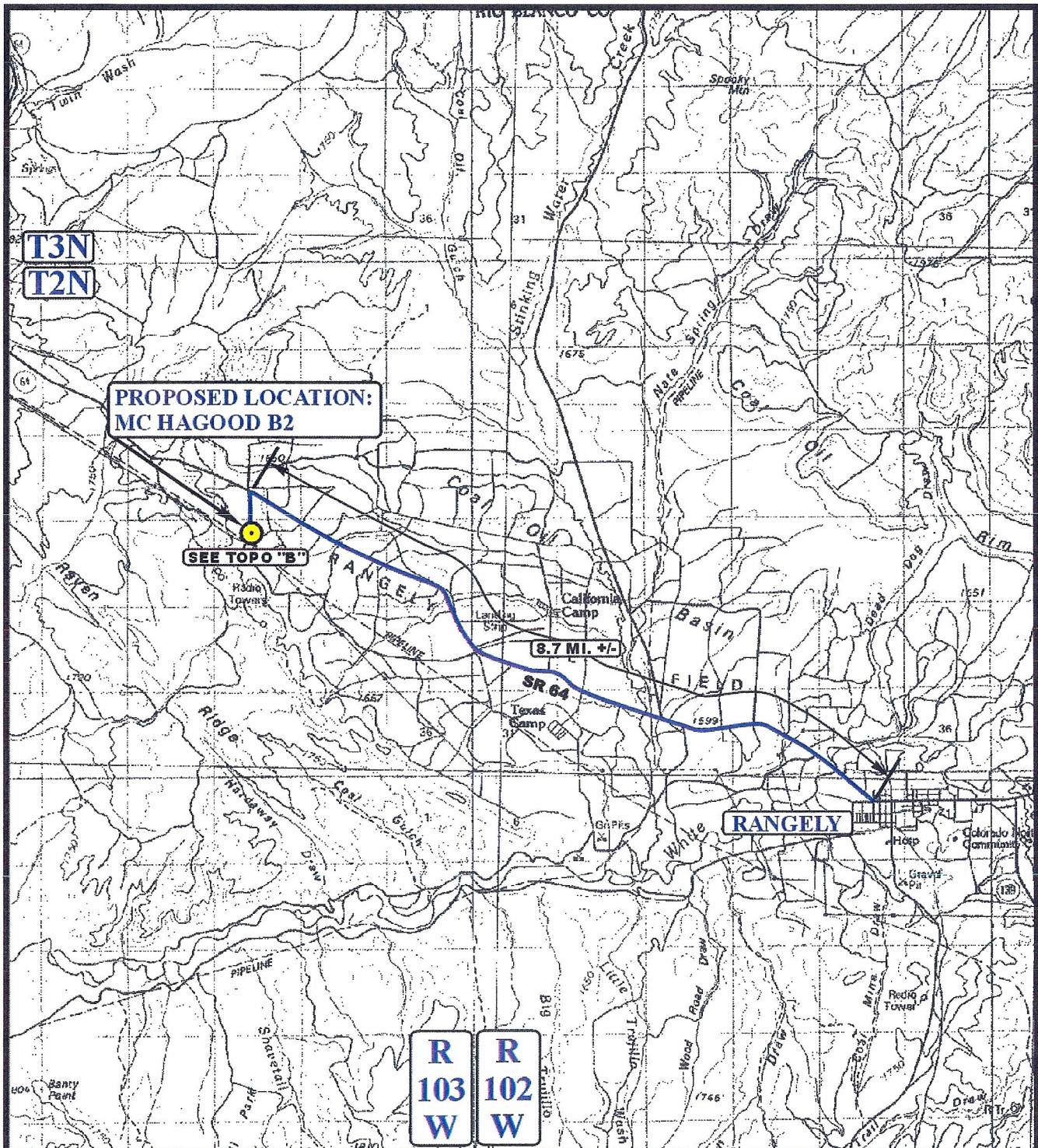
b) Chevron will be responsible for informing all persons who are associated with the project operations that they will be subject to prosecution for knowingly disturbing historic or archaeological sites, or for collecting artifacts. During operations, if discoveries of any cultural remains, monuments or sites, or any object of antiquity subject to the Antiquities Act of June, 1906 (34 Stat. 225; 16 U.S.C. Secs 431-433), the Archaeological Resources Protection Act of 1979 (PL 96-95), and 43 CFR, Part 3, operations will immediately cease and will be reported directly to the

Area Manager. In cases where salvage excavation is necessary, the cost of such excavation shall be borne by the Operator, unless otherwise agreed upon. There are no known archeological, historic, or cultural sites in the immediate area. Much of the Unit area, over the past ninety three years, has been subjected to surface disturbance by roads, pipelines, and other producing surface facilities, and the probability of finding any artifactual remains or architecture of archeological significance is remote. An archeological study of the Rangely Unit area has been conducted and clearance given. An archaeologist's report of federal land within the Unit boundary is on file with the BLM. A new cultural survey will be conducted, or a approved archaeological monitor will be present for the site and pipeline construction activities.

c) Pursuant to 43 CFR 10.4(g) Chevron will notify the authorized officer (AO), by telephone, with written confirmation, immediately upon the discovery of human remains, funerary items, scared objects, or objects of cultural patrimony. Further, pursuant to 43 CFR 10.4 (c) and (d), Chevron will stop activities in the vicinity of the discovery and protect it for 30 days or until notified to proceed by the authorized officer.

d) If paleontological materials (fossils) are uncovered during project activities, Chevron will immediately stop activities that might further disturb such materials, and contact the authorized officer (AO). The operator and the authorized officer will consult and determine the best option for avoiding or mitigating paleontological site damage.

e) An H2S Contingency Plan for this field is on file with the BLM. - Copy of the "Chevron Drilling - RWSU COC47675X Hydrogen Sulfide Contingency Plan" is included with this permit.



LEGEND:

PROPOSED LOCATION

CHEVRON U.S.A., INC.

MC HAGOOD B2
SECTION 22, T2N, R103W, 6th P.M.
814' FNL 2229' FWL



Uintah Engineering & Land Surveying
85 South 200 East Vernal, Utah 84078
(435) 789-1017 * FAX (435) 789-1813



ACCESS ROAD
MAP

10 **12** **10**
MONTH **DAY** **YEAR**

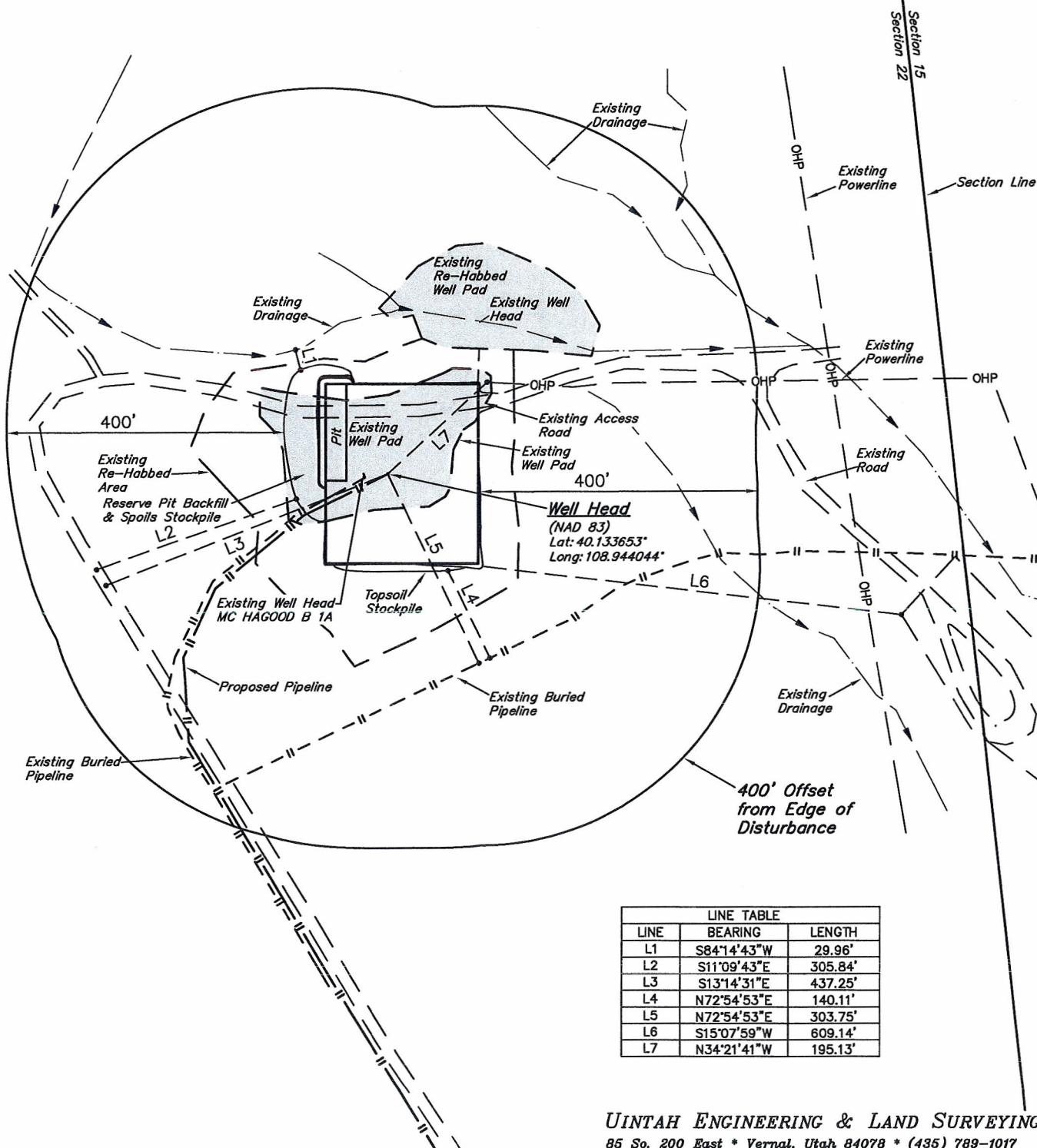
SCALE: 1:100,000 **DRAWN BY: Z.L.** **REVISED: 01-10-11**

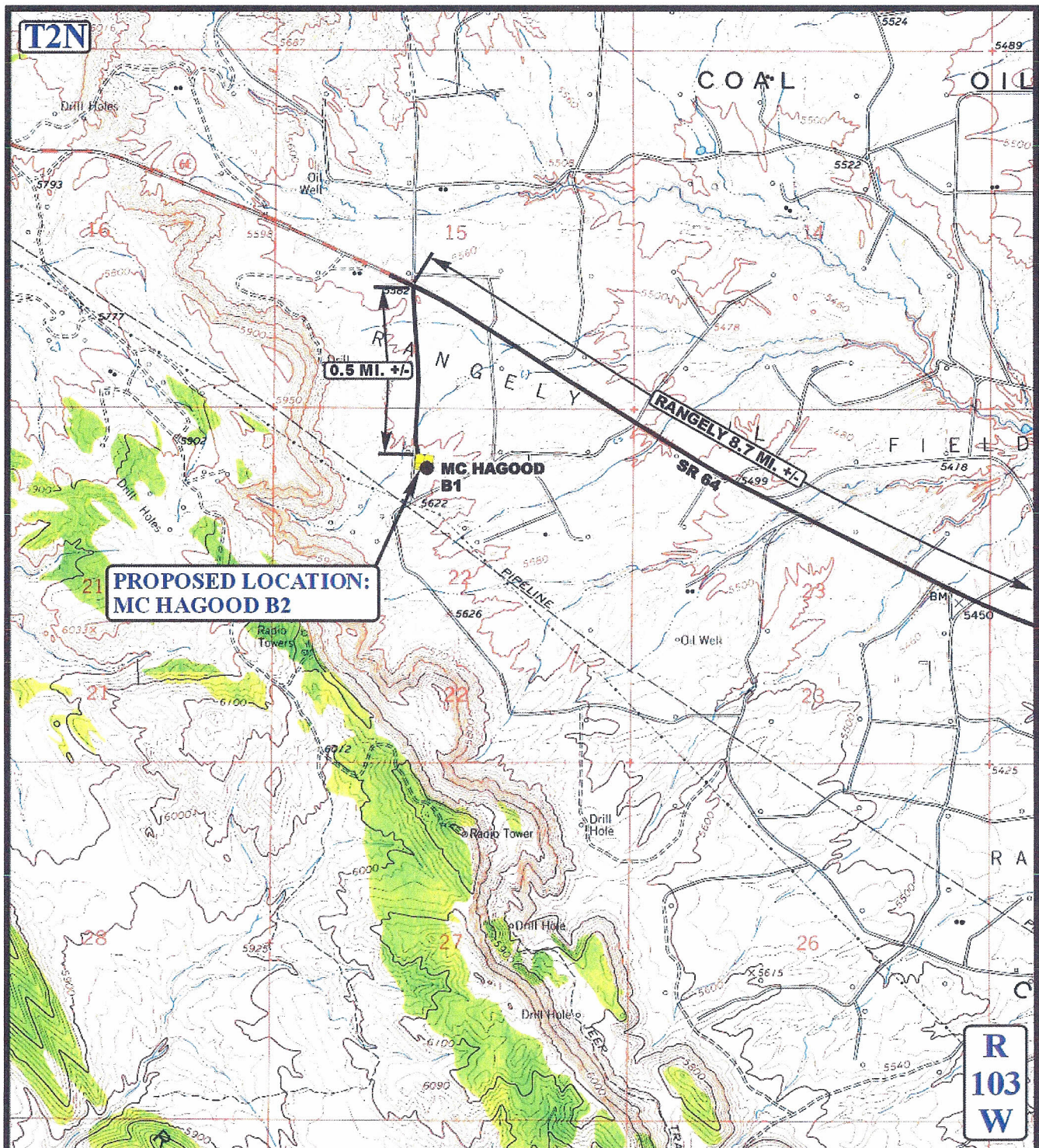




SCALE: 1" = 200'
DATE: 10-12-10
DRAWN BY: S.L.
REVISED: 10-19-10 S.L.
REVISED: 12-02-10 D.R.B.

CHEVRON USA, INC.
ADDENDUM TO LEGAL PLAT FOR
MC HAGOOD B2
SECTION 22, T2N, R103W, 6th P.M.
814' FNL 2229' FWL





LEGEND:

EXISTING ROAD

CHEVRON U.S.A., INC.

MC HAGOOD B2
SECTION 22, T2N, R103W, 6th P.M.
814' FNL 2229' FWL



Uintah Engineering & Land Surveying
85 South 200 East Vernal, Utah 84078
(435) 789-1017 * FAX (435) 789-1813

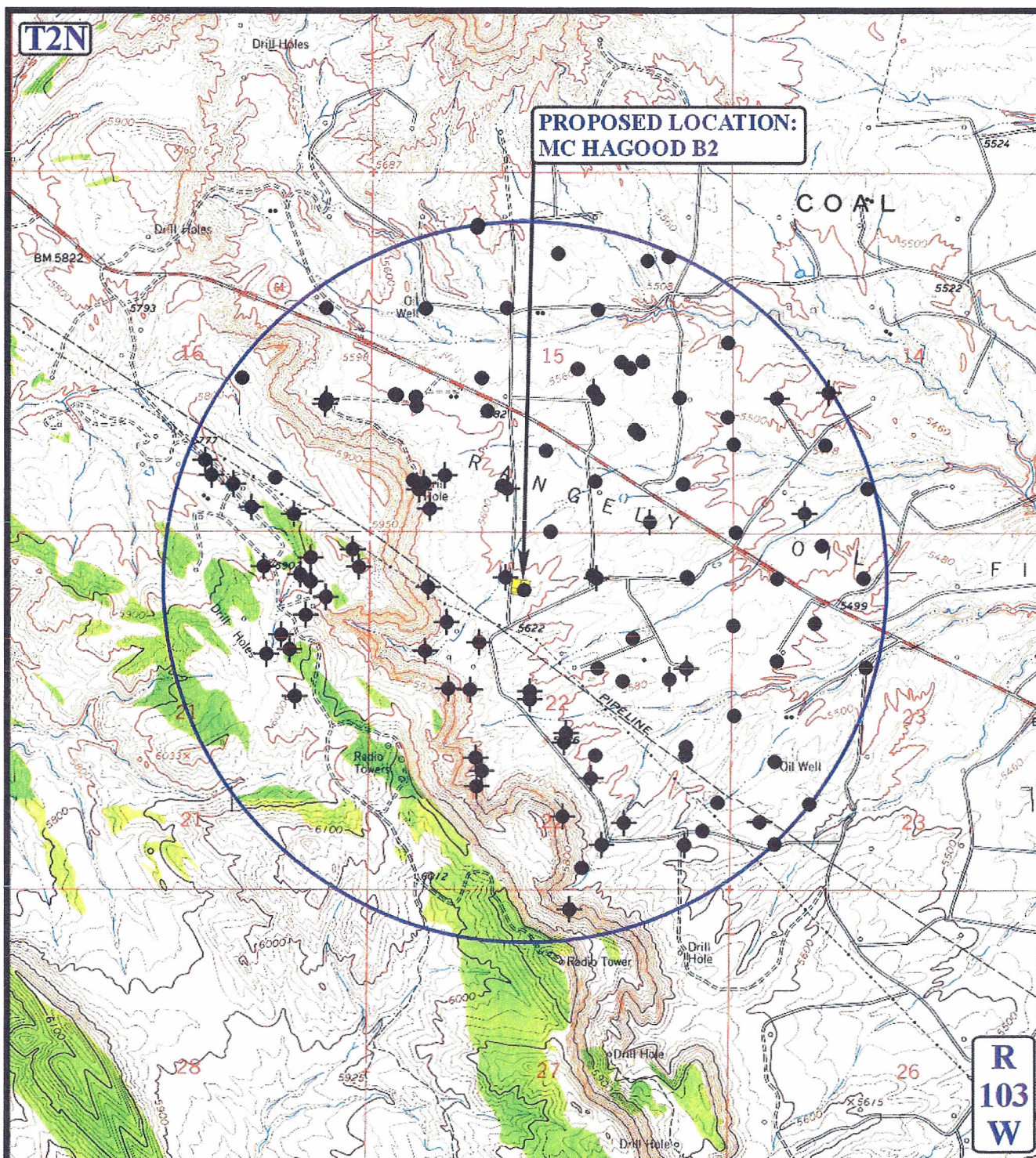


ACCESS ROAD
MAP

10 **12** **10**
MONTH **DAY** **YEAR**

SCALE: 1" = 2000' **DRAWN BY: Z.L.** **REVISED: 01-10-11**





LEGEND:

- ◐ DISPOSAL WELLS
- PRODUCING WELLS
- ◐ SHUT IN WELLS
- ◐ WATER WELLS
- ◐ ABANDONED WELLS
- ◐ TEMPORARILY ABANDONED

CHEVRON U.S.A., INC.

MC HAGOOD B2
SECTION 22, T2N, R103W, 6th P.M.
814' FNL 2229' FWL



Uintah Engineering & Land Surveying
 85 South 200 East Vernal, Utah 84078
 (435) 789-1017 * FAX (435) 789-1813



TOPOGRAPHIC
MAP

10 **12** **10**
MONTH **DAY** **YEAR**

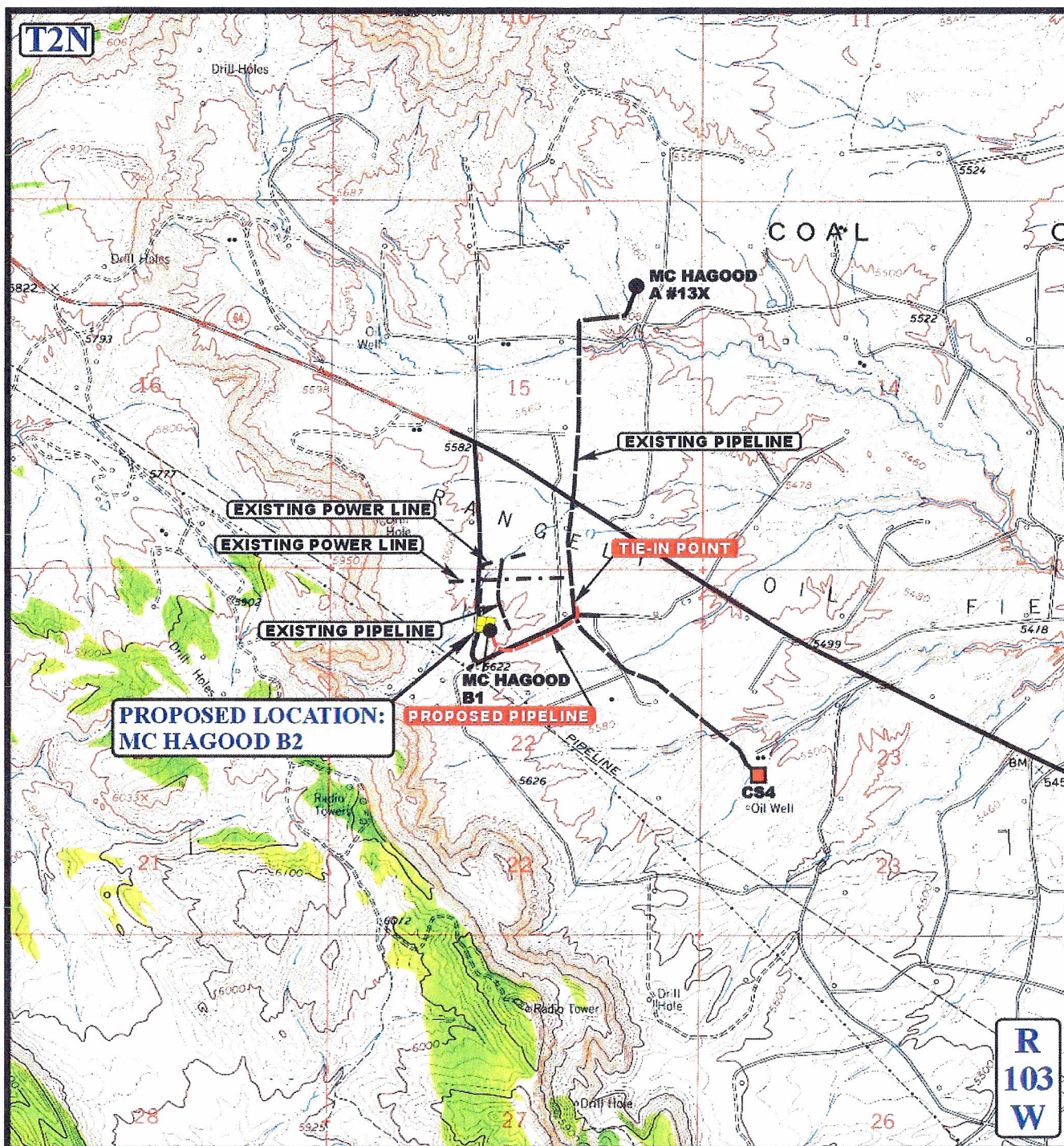
SCALE: 1" = 2000' **DRAWN BY: Z.L.** **REVISED: 11-30-10**



ACTIVE WELLBORES WITHIN ONE MILE RADIUS OF PROPOSED MC HAGOOD B2 SITE

	WELL DESCRIPTION	LOCATION	TD
1	05-103-01014, MCLAUGHLIN A C 53X	SWSW 14 2N -103W (6)	6609
2	05-103-01023, HAGOOD M. C. A 2	SWNW 15 2N -103W (6)	6643
3	05-103-01024, M C HAGOOD A-6	SWNE 15 2N -103W (6)	
4	05-103-01048, A C MCLAUGHLIN 36	NENE 15 2N -103W (6)	
5	05-103-01050, MCLAUGHLIN, A C 26	SESE 15 2N -103W (6)	6672
6	05-103-01052, MCLAUGHLIN, A C 31	SENE 15 2N -103W (6)	
7	05-103-01055, MCLAUGHLIN, A C 22	SESW 14 2N -103W (6)	6695
8	05-103-05708, M.B. LARSON C 3	NWSE 22 2N -103W (6)	7210
9	05-103-05718, MCLAUGHLIN, A C 23	NWSW 23 2N -103W (6)	6721
10	05-103-05733, A C MCLAUGHLIN 2	SENE 23 2N -103W (6)	6588
11	05-103-05735, MCLAUGHLIN-CONSOLIDATED-G 8	SWNW 23 2N -103W (6)	
12	05-103-05742, BEEZLEY 2-22	SWNE 22 2N -103W (6)	
13	05-103-05763, MCLAUGHLIN, A C 24	NWNW 23 2N -103W (6)	6690
14	05-103-05765, LARSON, M B B-1	NENE 22 2N -103W (6)	6402
15	05-103-05767, MCLAUGHLIN 15	NENW 23 2N -103W (6)	
16	05-103-05797, ROTH, D F 1	NWSW 15 2N -103W (6)	7255
17	05-103-06320, MCLAUGHLIN, A C 40	NWSW 14 2N -103W (6)	6663
18	05-103-06327, M C HAGOOD A 9	SWNE 15 2N -103W (6)	6700
19	05-103-06328, HAGOOD M C A-1	NESW 15 2N -103W (6)	
20	05-103-06331, HAGOOD M C 5	NWSE 15 2N -103W (6)	6720
21	05-103-06332, LARSON, M B A-2	SWSE 15 2N -103W (6)	
22	05-103-06333, A C MCLAUGHLIN 37	NESE 15 2N -103W (6)	
23	05-103-06419, MCLAUGHLIN, A C 55X	SWSW 14 2N -103W (6)	6676
24	05-103-06420, MCLAUGHLIN, A C 56X	SESW 14 2N -103W (6)	6588
25	05-103-06425, MCLAUGHLIN, A C 52X	SWNW 23 2N -103W (6)	6660
26	05-103-06426, MCLAUGHLIN A C 54X	NESW 23 2N -103W (6)	6611
27	05-103-07717, AC MCLAUGHLIN 64X	SESE 15 2N -103W (6)	
28	05-103-07718, A C MCLAUGHLIN 65X	NWNW 23 2N -103W (6)	
29	05-103-07737, M B LARSON A-4X	SESW 15 2N -103W (6)	0
30	05-103-07738, MCLAUGHLIN, A C 66X	NWSW 23 2N -103W (6)	6806
31	05-103-08292, MCLAUGHLIN A. C. #68X	NWNW 23 2N -103W (6)	6746
32	05-103-09152, A.C. MCLAUGHLIN 77X	SENE 15 2N -103W (6)	6760
33	05-103-09155, MCLAUGHLIN, A C 78X	SESE 22 2N -103W (6)	6830
34	05-103-10533, M.C.HAGOOD A 12X	NESW 15 2N -103W (6)	6938
35	05-103-10534, M.B.LARSON A 3X	SESW 15 2N -103W (6)	6990
36	05-103-10548, M.C.HAGOOD A 14X	NWSE 15 2N -103W (6)	6964
37	05-103-10549, BEEZLEY 3X22	SWNE 22 2N -103W (6)	6733
38	05-103-10552, M.B. LARSON A 4X	SWSE 15 2N -103W (6)	6784
39	05-103-10553, BEEZLEY 4X22	SWNE 22 2N -103W (6)	
40	05-103-10613, M.C.HAGOOD A 18X	NESW 15 2N -103W (6)	6948
41	05-103-10670, M.C. HAGOOD A 19X	NWSE 15 2N -103W (6)	6731
42	05-103-10754, BEEZLEY 1-22 AX	SENE 22 2N -103W (6)	6738
43	05-103-10755, M.B. LARSON B 3 AX	NWNE 22 2N -103W (6)	6889
44	05-103-10756, M.B. LARSON A 1AX	SESW 15 2N -103W (6)	6772

45	05-103-10763, M.B. LARSON C 1 AX	NESE 22	2N -103W (6)	6904
46	05-103-11028, M.C. HAGOOD B 1A	NENW 22	2N -103W (6)	6533
47	05-103-11250, D.F. ROTH 6	NWSW 15	2N -103W (6)	6971
48	05-103-11430, D.F. ROTH 5	NWSW 15	2N -103W (6)	6688
49	05-103-11742, BEEZLEY 5X22	SWNE 22	2N -103W (6)	
50	05-103-11743, BEEZLEY 6X22	SWNE 22	2N -103W (6)	
51	05-103-60003, W. P. MELLE 1	SENE 16	2N -103W (6)	7361
52	05-103-60053, MCLAUGHLIN A C 27	SWSW 14	2N -103W (6)	



APPROXIMATE TOTAL PROPOSED LINE DISTANCE = 1,592' +/-

LEGEND:

- EXISTING PIPELINE
- - - - - EXISTING POWER LINE
- - - - - PROPOSED PIPELINE

N

CHEVRON U.S.A., INC.

MC HAGOOD B2
SECTION 22, T2N, R103W, 6th P.M.
814' FNL 2229' FWL



Uintah Engineering & Land Surveying
85 South 200 East Vernal, Utah 84078
(435) 789-1017 * FAX (435) 789-1813

TOPOGRAPHIC
MAP

10 12 10
MONTH DAY YEAR

SCALE: 1" = 2000' DRAWN BY: Z.L. REVISED: 01-10-11

D
TOPO

CHEVRON USA, INC.

CONSTRUCTION LAYOUT FOR

MC HAGOOD B2
SECTION 22, T2N, R103W, 6th P.M.
814' FNL 2229' FWL

FIGURE #1

SCALE: 1" = 50'

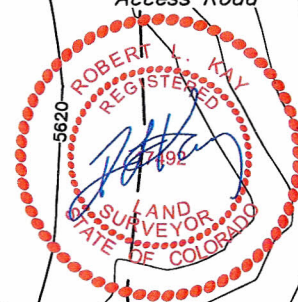
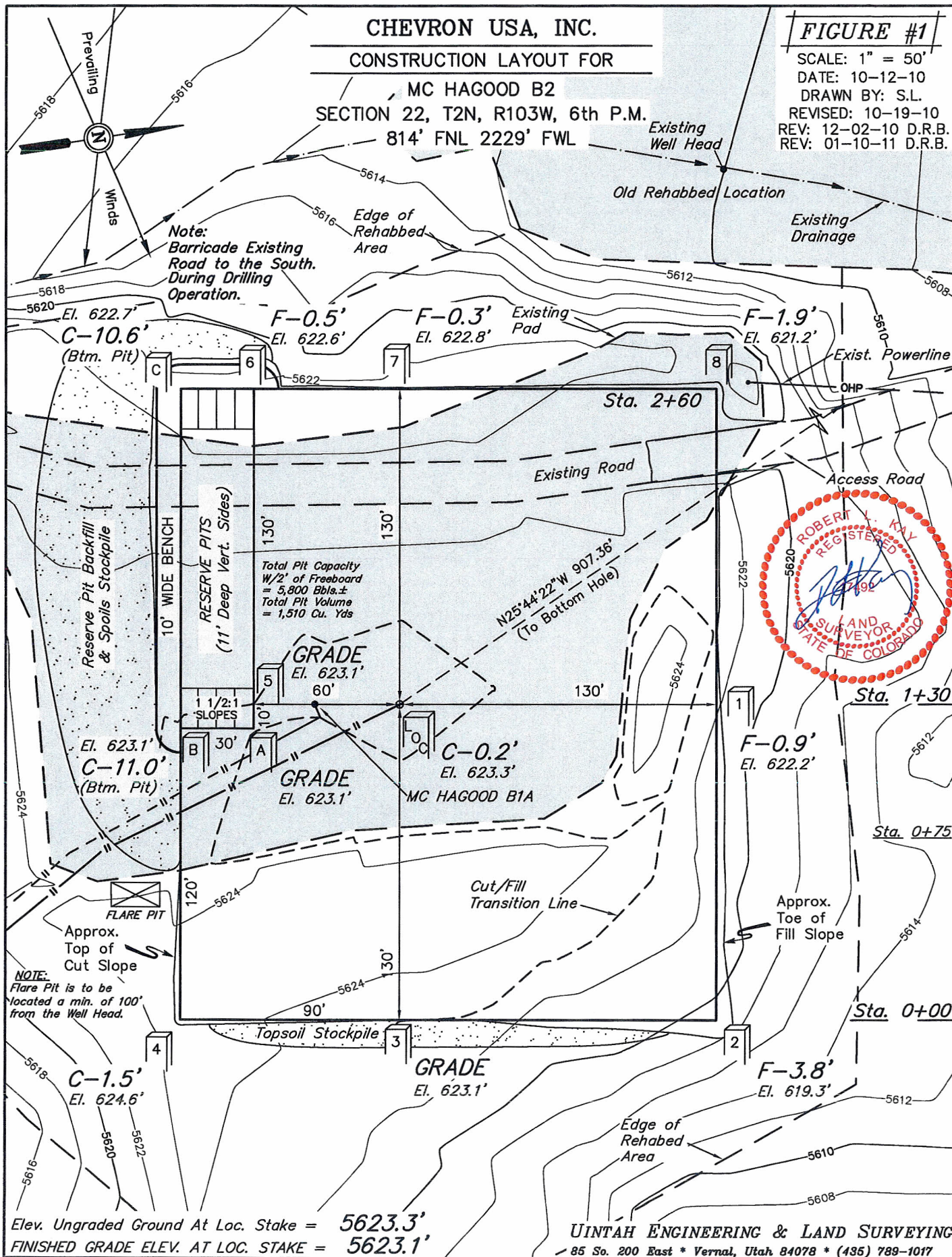
DATE: 10-12-10

DRAWN BY: S.L.

REVISED: 10-19-10

REV: 12-02-10 D.R.B.

REV: 01-10-11 D.R.B.



Elev. Ungraded Ground At Loc. Stake = 5623.3'
FINISHED GRADE ELEV. AT LOC. STAKE = 5623.1'

UINTAH ENGINEERING & LAND SURVEYING
85 So. 200 East * Vernal, Utah 84078 * (435) 789-1017

CHEVRON USA, INC.

RECLAMATION DIAGRAM FOR

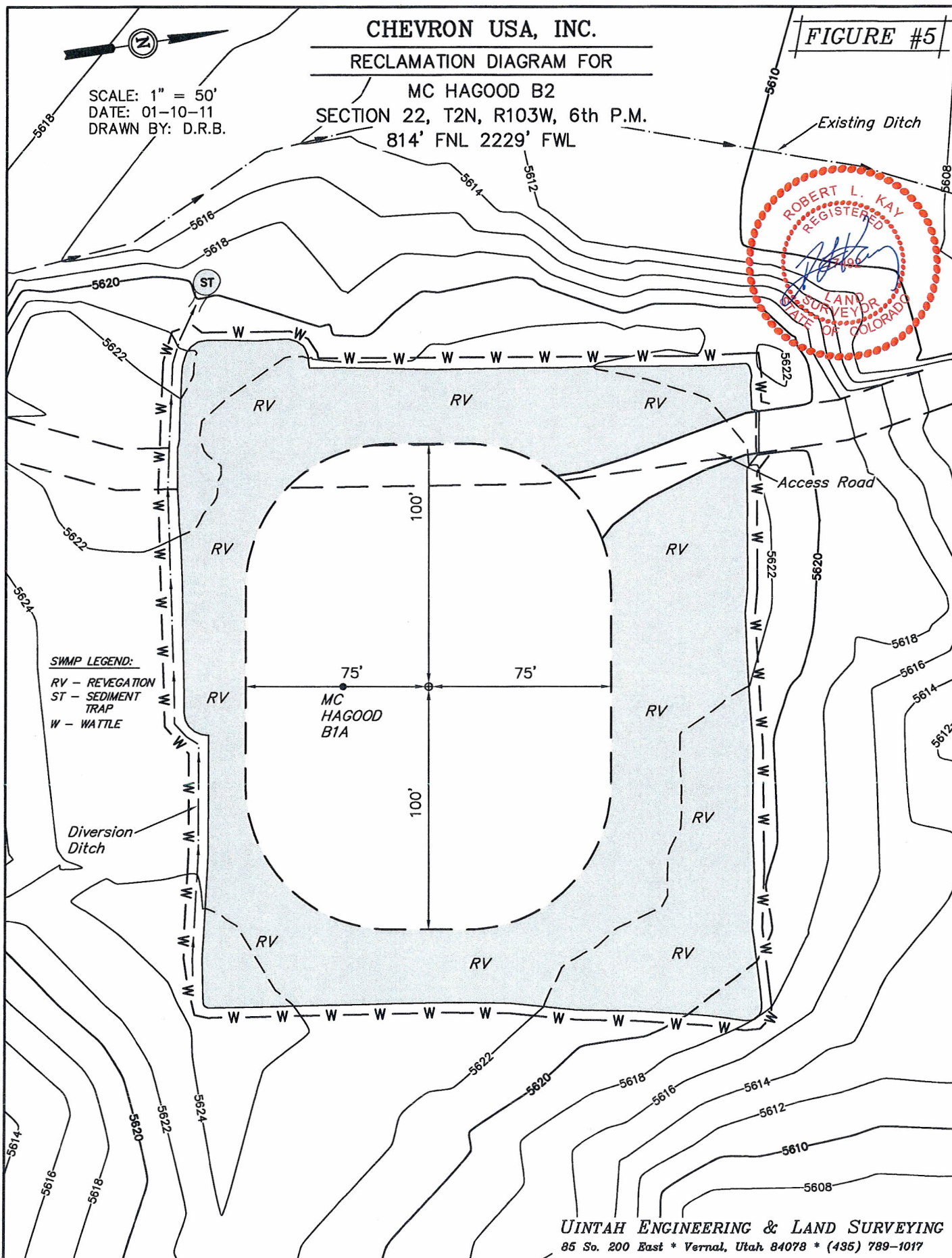
MC HAGOOD B2

SECTION 22, T2N, R103W, 6th P.M.

814' FNL 2229' FWL

FIGURE #5

SCALE: 1" = 50'
DATE: 01-10-11
DRAWN BY: D.R.B.



SWAMP LEGEND:

RV - REVEGETATION
ST - SEDIMENT TRAP
W - WATTLE