

UELS Alum. Cap,
Set Stone, Pile
of Stones
Lat: 40.135894°
Long: 108.951894°

T2N, R103W, 6th P.M.

CHEVRON U.S.A., INC.

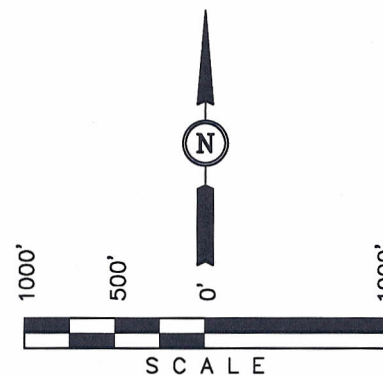
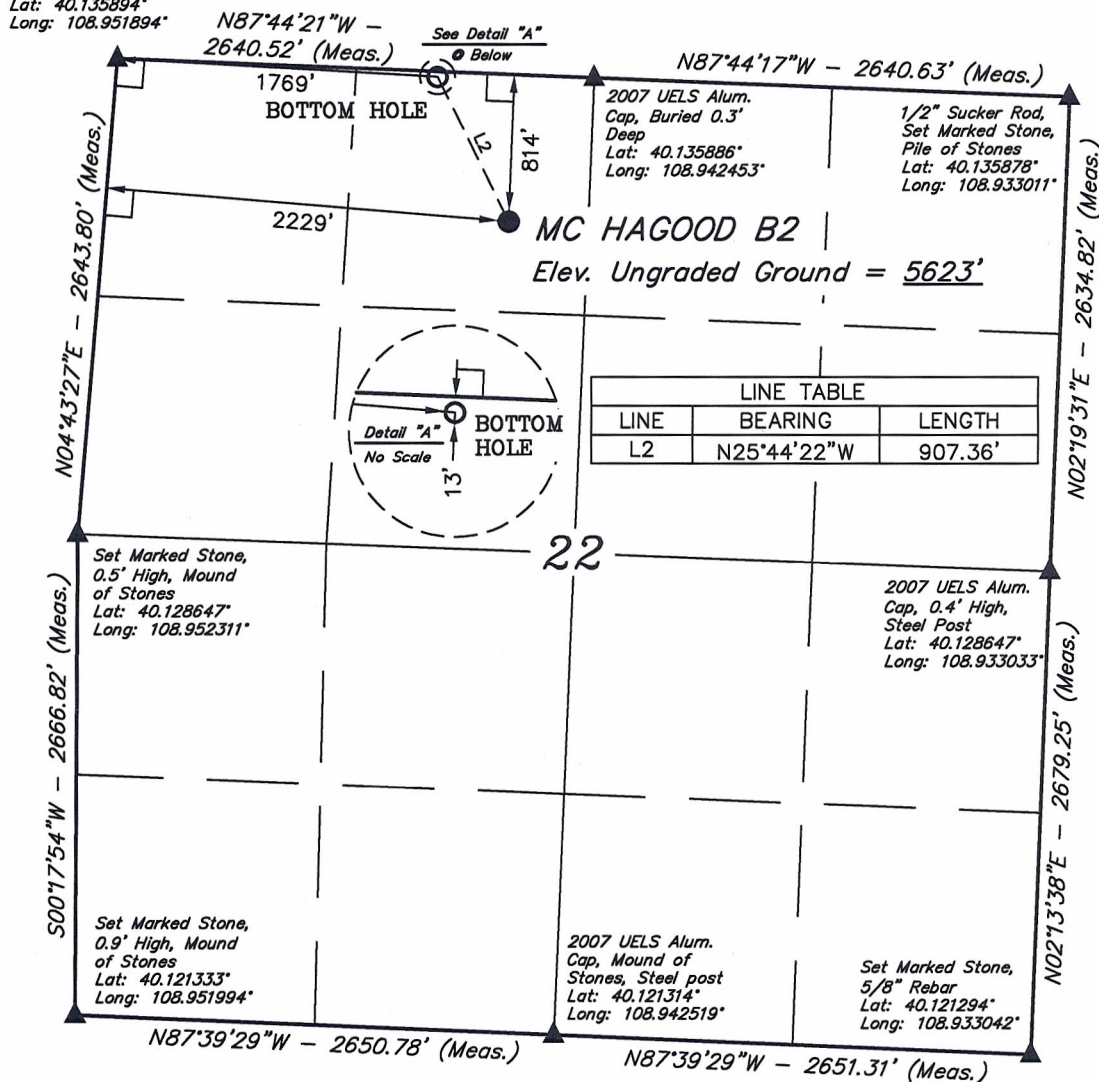
Well location, MC HAGOOD B2, located as shown
in the NE 1/4 NW 1/4 of Section 22, T2N,
R103W, 6th P.M., Rio Blanco County, Colorado.

BASIS OF ELEVATION

GOLF TRIANGULATION STATION LOCATED IN THE SE 1/4 OF
SECTION 30, T2N, R102W, 6th P.M. TAKEN FROM THE BANTY
POINT, QUADRANGLE, COLORADO, RIO BLANCO COUNTY, 7.5
MINUTE QUAD (TOPOGRAPHIC MAP) PUBLISHED BY THE UNITED
STATES DEPARTMENT OF THE INTERIOR, GEOLOGICAL SURVEY.
SAID ELEVATION IS MARKED AS BEING 5311 FEET.

BASIS OF BEARINGS

BASIS OF BEARINGS IS A G.P.S. OBSERVATION.



CERTIFICATE

THIS IS TO CERTIFY THAT THE ABOVE PLAT WAS PREPARED FROM
FIELD NOTES OF ACTUAL SURVEYS MADE BY ME OR UNDER MY
SUPERVISION AND THAT THE SAME ARE TRUE AND CORRECT TO THE
BEST OF MY KNOWLEDGE AND BELIEF.

REGISTERED LAND SURVEYOR
REGISTRATION NO. 17492
STATE OF COLORADO

REVISED: 12-02-10 D.R.B.
REVISED: 10-19-10 S.L.

UINTAH ENGINEERING & LAND SURVEYING
85 SOUTH 200 EAST - VERNAL, UTAH 84078
(435) 789-1017

NOTE:
SEE ADDENDUM TO LEGAL PLAT FOR
EXISTING IMPROVEMENTS WITHIN 400'
OF THE PROPOSED WELL DISTURBANCE.

LEGEND:

- └─ = 90° SYMBOL
- = PROPOSED WELL HEAD.
- ▲ = SECTION CORNERS LOCATED.

PDOP = 1.9

NAD 83 (TARGET BOTTOM HOLE)	NAD 83 (SURFACE LOCATION)
LATITUDE = 40°08'09.07" (40.135853)	LATITUDE = 40°08'01.15" (40.133653)
LONGITUDE = 108°56'44.03" (108.945564)	LONGITUDE = 108°56'38.56" (108.944044)
NAD 27 (TARGET BOTTOM HOLE)	NAD 27 (SURFACE LOCATION)
LATITUDE = 40°08'09.18" (40.135883)	LATITUDE = 40°08'01.26" (40.133683)
LONGITUDE = 108°56'41.63" (108.944897)	LONGITUDE = 108°56'36.16" (108.943378)

SCALE 1" = 1000'	DATE SURVEYED: 10-11-10	DATE DRAWN: 10-12-10
PARTY J.F. C.P. S.L.	REFERENCES G.L.O. PLAT	
WEATHER WARM	FILE CHEVRON U.S.A., INC.	