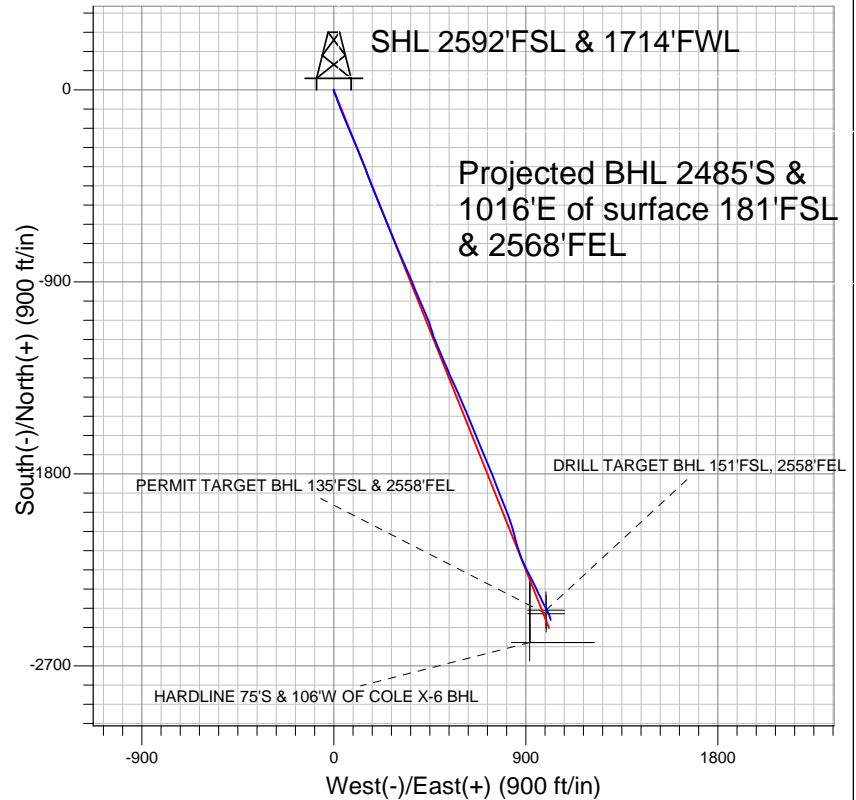


Mineral Resources Inc



LEGEND

- COLE X-6 4-8-31, Wellbore #1, Plan #8 (8-4-10) V0
- Wellbore #1

Final Survey Plot

Projected Final Survey -
7815'MD & 7249'TVD @ 2685' VS
2.8 deg Inc 167.1 deg AZ

Project: SEC.31-T5N-R65W
Site: PAD X SEC.31-T5N-R65W
Well: COLE X-6 4-8-31
Plan: Wellbore #1



Directional

Mineral Resources Inc

SEC.31-T5N-R65W

PAD X SEC.31-T5N-R65W

COLE X-6 4-8-31

Wellbore #1

Design: Wellbore #1

Standard Survey Report

17 September, 2010

Survey	Wellbore Data									
	Measured Depth (ft)	Inclination (°)	Azimuth (°)	Vertical Depth (ft)	+N/-S (ft)	+E/-W (ft)	Vertical Section (ft)	Dogleg Rate (°/100ft)	Build Rate (°/100ft)	Turn Rate (°/100ft)
Main Wellbore	0.0	0.00	0.00	0.0	0.0	0.0	0.0	0.00	0.00	0.00
	90.0	0.40	313.40	90.0	0.2	-0.2	-0.3	0.44	0.44	0.00
	151.0	0.30	312.90	151.0	0.5	-0.5	-0.6	0.16	-0.16	-0.82
	212.0	0.40	344.90	212.0	0.8	-0.7	-1.0	0.35	0.16	52.46
	273.0	0.10	29.10	273.0	1.0	-0.7	-1.2	0.55	-0.49	72.46
	334.0	0.20	279.60	334.0	1.1	-0.8	-1.3	0.41	0.16	-179.51
	396.0	0.20	330.70	396.0	1.2	-0.9	-1.5	0.28	0.00	82.42
	457.0	0.60	186.60	457.0	1.0	-1.0	-1.3	1.26	0.66	-236.23
	518.0	2.10	174.50	518.0	-0.4	-1.0	0.0	2.49	2.46	-19.84
	580.0	4.00	171.40	579.9	-3.7	-0.5	3.2	3.07	3.06	-5.00
	641.0	6.40	157.50	640.6	-9.0	1.1	8.7	4.42	3.93	-22.79
	703.0	8.70	158.50	702.1	-16.5	4.1	16.8	3.72	3.71	1.61
	765.0	10.60	153.80	763.2	-26.0	8.4	27.2	3.32	3.06	-7.58

Company:	Mineral Resources Inc	Local Co-ordinate Reference:	Well COLE X-6 4-8-31
Project:	SEC.31-T5N-R65W	TVD Reference:	WELL @ 4673.0ft (Original Well Elev)
Site:	PAD X SEC.31-T5N-R65W	MD Reference:	WELL @ 4673.0ft (Original Well Elev)
Well:	COLE X-6 4-8-31	North Reference:	True
Wellbore:	Wellbore #1	Survey Calculation Method:	Minimum Curvature
Design:	Wellbore #1	Database:	Landmark

Survey

Measured Depth (ft)	Inclination (°)	Azimuth (°)	Vertical Depth (ft)	+N/-S (ft)	+E/-W (ft)	Vertical Section (ft)	Dogleg Rate (°/100ft)	Build Rate (°/100ft)	Turn Rate (°/100ft)
827.0	13.10	160.00	823.9	-37.7	13.3	39.9	4.52	4.03	10.00
889.0	15.10	161.00	884.0	-52.0	18.3	55.0	3.25	3.23	1.61
953.0	17.00	159.80	945.5	-68.6	24.3	72.7	3.01	2.97	-1.88
988.0	18.30	159.40	978.9	-78.6	28.0	83.3	3.73	3.71	-1.14
1,071.0	20.50	156.90	1,057.2	-104.1	38.3	110.9	2.83	2.65	-3.01
1,163.0	25.30	156.20	1,141.9	-137.0	52.5	146.6	5.23	5.22	-0.76
1,256.0	27.50	157.10	1,225.2	-174.9	68.9	188.0	2.40	2.37	0.97
1,348.0	27.80	158.40	1,306.7	-214.4	85.1	230.7	0.73	0.33	1.41
1,441.0	27.30	157.60	1,389.1	-254.3	101.2	273.7	0.67	-0.54	-0.86
1,534.0	26.20	156.50	1,472.2	-292.9	117.5	315.5	1.30	-1.18	-1.18
1,626.0	26.20	158.90	1,554.7	-330.4	132.9	356.2	1.15	0.00	2.61
1,719.0	25.50	159.10	1,638.4	-368.3	147.4	396.7	0.76	-0.75	0.22
1,812.0	26.50	160.10	1,722.0	-406.5	161.6	437.4	1.17	1.08	1.08
1,905.0	27.30	157.30	1,804.9	-445.7	176.9	479.5	1.61	0.86	-3.01
1,998.0	25.70	158.10	1,888.2	-484.1	192.7	521.0	1.76	-1.72	0.86
2,090.0	25.50	157.70	1,971.1	-520.9	207.6	560.7	0.29	-0.22	-0.43
2,183.0	25.50	158.40	2,055.1	-558.0	222.6	600.8	0.32	0.00	0.75
2,276.0	24.70	158.50	2,139.3	-594.7	237.1	640.2	0.86	-0.86	0.11
2,368.0	24.90	157.80	2,222.8	-630.6	251.5	678.8	0.39	0.22	-0.76
2,461.0	25.70	157.50	2,306.9	-667.3	266.6	718.6	0.87	0.86	-0.32
2,553.0	23.90	156.70	2,390.4	-702.9	281.6	757.1	1.99	-1.96	-0.87
2,646.0	22.20	156.90	2,476.0	-736.3	295.9	793.6	1.83	-1.83	0.22
2,739.0	22.70	156.90	2,561.9	-769.0	309.9	829.1	0.54	0.54	0.00
2,832.0	24.40	156.20	2,647.2	-803.1	324.6	866.2	1.85	1.83	-0.75
2,925.0	25.10	155.90	2,731.6	-838.7	340.5	905.1	0.76	0.75	-0.32
3,018.0	24.10	157.70	2,816.2	-874.2	355.7	943.8	1.34	-1.08	1.94
3,111.0	24.80	157.10	2,900.9	-909.8	370.5	982.3	0.80	0.75	-0.65
3,204.0	24.40	157.10	2,985.4	-945.4	385.6	1,021.0	0.43	-0.43	0.00
3,296.0	25.20	157.60	3,068.9	-981.0	400.4	1,059.6	0.90	0.87	0.54
3,390.0	23.60	156.70	3,154.5	-1,016.8	415.5	1,098.4	1.75	-1.70	-0.96
3,482.0	23.60	155.60	3,238.8	-1,050.5	430.4	1,135.3	0.48	0.00	-1.20
3,576.0	23.50	159.10	3,325.0	-1,085.2	444.9	1,172.8	1.49	-0.11	3.72
3,669.0	25.50	163.80	3,409.6	-1,121.7	457.1	1,211.3	3.00	2.15	5.05
3,762.0	24.20	159.70	3,494.0	-1,158.8	469.3	1,250.2	2.32	-1.40	-4.41
3,854.0	24.80	156.80	3,577.8	-1,194.2	483.4	1,288.4	1.46	0.65	-3.15
3,947.0	25.10	157.00	3,662.1	-1,230.3	498.8	1,327.6	0.34	0.32	0.22
4,040.0	25.50	157.10	3,746.2	-1,266.9	514.3	1,367.3	0.43	0.43	0.11
4,133.0	25.40	156.60	3,830.1	-1,303.7	530.0	1,407.3	0.25	-0.11	-0.54
4,225.0	26.20	157.40	3,913.0	-1,340.5	545.6	1,447.3	0.95	0.87	0.87
4,318.0	26.20	154.30	3,996.4	-1,378.0	562.4	1,488.3	1.47	0.00	-3.33
4,411.0	25.40	155.20	4,080.1	-1,414.6	579.7	1,528.8	0.96	-0.86	0.97
4,503.0	26.30	156.60	4,162.9	-1,451.2	596.1	1,568.9	1.18	0.98	1.52
4,596.0	25.90	156.40	4,246.4	-1,488.7	612.4	1,609.8	0.44	-0.43	-0.22
4,689.0	26.40	158.10	4,329.9	-1,526.5	628.2	1,650.7	0.97	0.54	1.83
4,784.0	25.50	158.30	4,415.3	-1,565.1	643.7	1,692.3	0.95	-0.95	0.21
4,875.0	25.30	157.40	4,497.6	-1,601.3	658.4	1,731.3	0.48	-0.22	-0.99
4,968.0	24.10	158.00	4,582.0	-1,637.2	673.1	1,770.2	1.32	-1.29	0.65
5,061.0	25.90	157.00	4,666.3	-1,673.5	688.2	1,809.5	1.99	1.94	-1.08
5,154.0	24.90	157.70	4,750.3	-1,710.3	703.5	1,849.4	1.12	-1.08	0.75
5,247.0	25.70	156.90	4,834.4	-1,747.0	718.9	1,889.1	0.94	0.86	-0.86
5,339.0	26.10	156.90	4,917.2	-1,784.0	734.7	1,929.3	0.43	0.43	0.00
5,432.0	26.00	159.80	5,000.7	-1,821.9	749.7	1,970.1	1.37	-0.11	3.12
5,525.0	25.10	159.40	5,084.6	-1,859.5	763.7	2,010.2	0.99	-0.97	-0.43
5,618.0	24.80	156.40	5,169.0	-1,895.9	778.5	2,049.5	1.40	-0.32	-3.23

Company:	Mineral Resources Inc	Local Co-ordinate Reference:	Well COLE X-6 4-8-31
Project:	SEC.31-T5N-R65W	TVD Reference:	WELL @ 4673.0ft (Original Well Elev)
Site:	PAD X SEC.31-T5N-R65W	MD Reference:	WELL @ 4673.0ft (Original Well Elev)
Well:	COLE X-6 4-8-31	North Reference:	True
Wellbore:	Wellbore #1	Survey Calculation Method:	Minimum Curvature
Design:	Wellbore #1	Database:	Landmark

Survey

Measured Depth (ft)	Inclination (°)	Azimuth (°)	Vertical Depth (ft)	+N/-S (ft)	+E/-W (ft)	Vertical Section (ft)	Dogleg Rate (°/100ft)	Build Rate (°/100ft)	Turn Rate (°/100ft)
5,711.0	24.50	159.00	5,253.5	-1,931.7	793.2	2,088.2	1.21	-0.32	2.80
5,804.0	25.90	157.30	5,337.6	-1,968.5	807.9	2,127.8	1.69	1.51	-1.83
5,896.0	25.30	161.80	5,420.6	-2,005.7	821.8	2,167.5	2.21	-0.65	4.89
5,989.0	25.30	164.80	5,504.7	-2,043.7	833.2	2,207.1	1.38	0.00	3.23
6,082.0	26.10	163.60	5,588.5	-2,082.5	844.2	2,247.1	1.03	0.86	-1.29
6,174.0	27.00	164.90	5,670.8	-2,122.1	855.4	2,288.0	1.16	0.98	1.41
6,266.0	26.20	161.20	5,753.1	-2,161.5	867.4	2,329.0	2.00	-0.87	-4.02
6,359.0	26.10	157.70	5,836.5	-2,199.9	881.7	2,370.0	1.66	-0.11	-3.76
6,452.0	23.30	154.70	5,921.0	-2,235.4	897.4	2,408.8	3.30	-3.01	-3.23
6,544.0	20.80	151.90	6,006.3	-2,266.3	912.8	2,443.2	2.95	-2.72	-3.04
6,636.0	18.70	152.30	6,092.9	-2,293.8	927.4	2,474.1	2.29	-2.28	0.43
6,730.0	17.10	155.00	6,182.3	-2,319.7	940.2	2,503.0	1.92	-1.70	2.87
6,822.0	15.20	155.40	6,270.7	-2,342.9	951.0	2,528.5	2.07	-2.07	0.43
6,915.0	14.40	152.60	6,360.6	-2,364.2	961.4	2,552.2	1.15	-0.86	-3.01
7,007.0	13.10	156.20	6,450.0	-2,383.9	970.8	2,574.0	1.69	-1.41	3.91
7,100.0	11.80	151.80	6,540.8	-2,402.0	979.6	2,594.0	1.73	-1.40	-4.73
7,193.0	11.80	150.90	6,631.8	-2,418.6	988.7	2,612.9	0.20	0.00	-0.97
7,286.0	9.60	152.10	6,723.2	-2,433.8	997.0	2,630.1	2.38	-2.37	1.29
7,362.4	9.51	156.20	6,798.5	-2,445.2	1,002.5	2,642.7	0.90	-0.11	5.37
DRILL TARGET BHL 151'FSL, 2558'FEL									
7,364.8	9.51	156.33	6,800.9	-2,445.6	1,002.7	2,643.1	0.90	-0.08	5.41
PERMIT TARGET BHL 135'FSL & 2558'FEL									
7,379.0	9.50	157.10	6,814.9	-2,447.7	1,003.6	2,645.5	0.90	-0.07	5.42
7,471.0	7.10	158.70	6,905.9	-2,460.0	1,008.6	2,658.8	2.62	-2.61	1.74
7,564.0	5.10	162.00	6,998.4	-2,469.3	1,012.0	2,668.6	2.18	-2.15	3.55
7,657.0	4.00	163.60	7,091.1	-2,476.4	1,014.2	2,676.0	1.19	-1.18	1.72
7,763.0	2.80	167.10	7,196.9	-2,482.4	1,015.8	2,682.2	1.15	-1.13	3.30
7,815.0	2.80	167.10	7,248.9	-2,484.9	1,016.3	2,684.7	0.00	0.00	0.00
HARDLINE 75'S & 106'W OF COLE X-6 BHL									

Checked By: _____ Approved By: _____ Date: _____