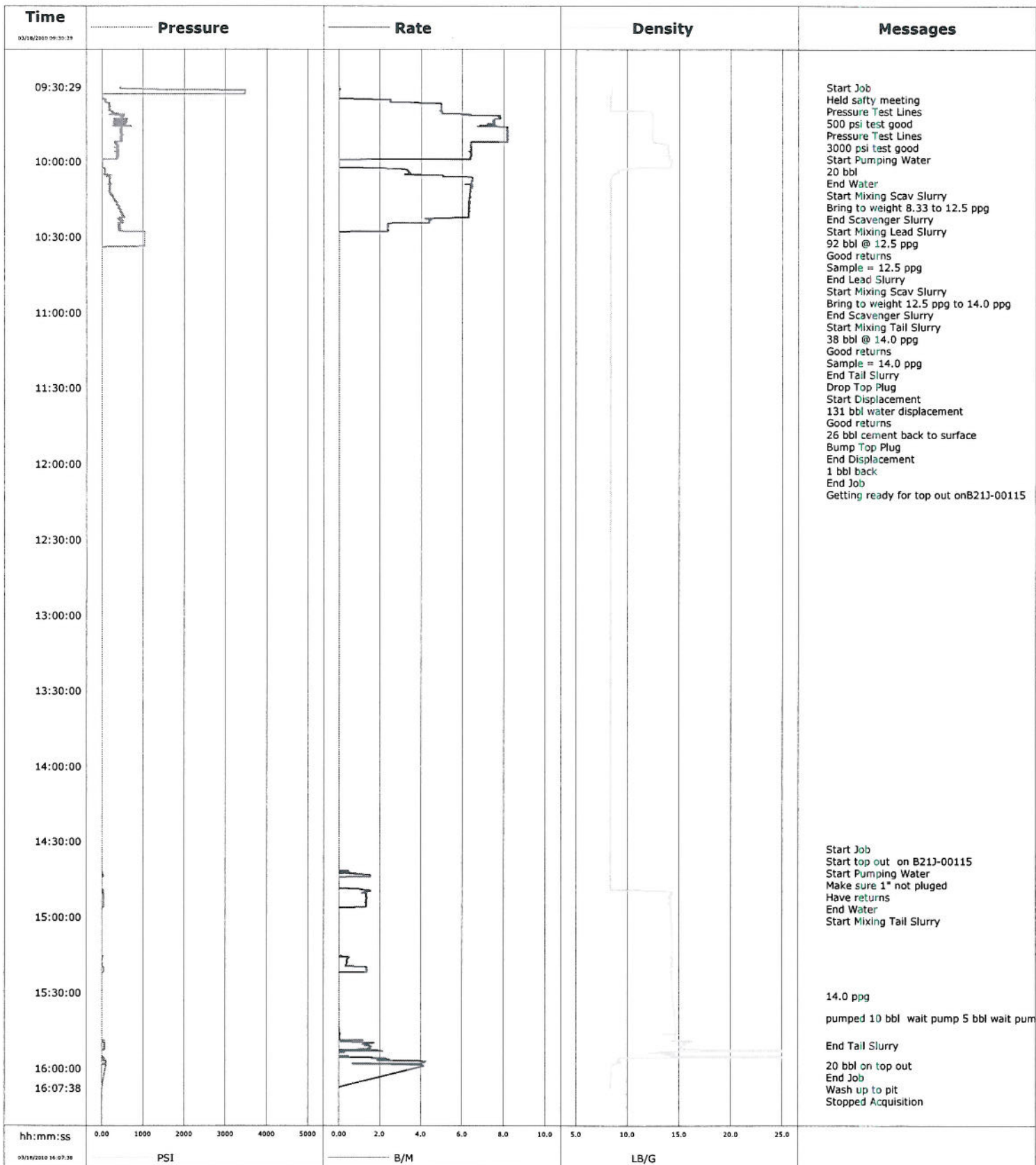
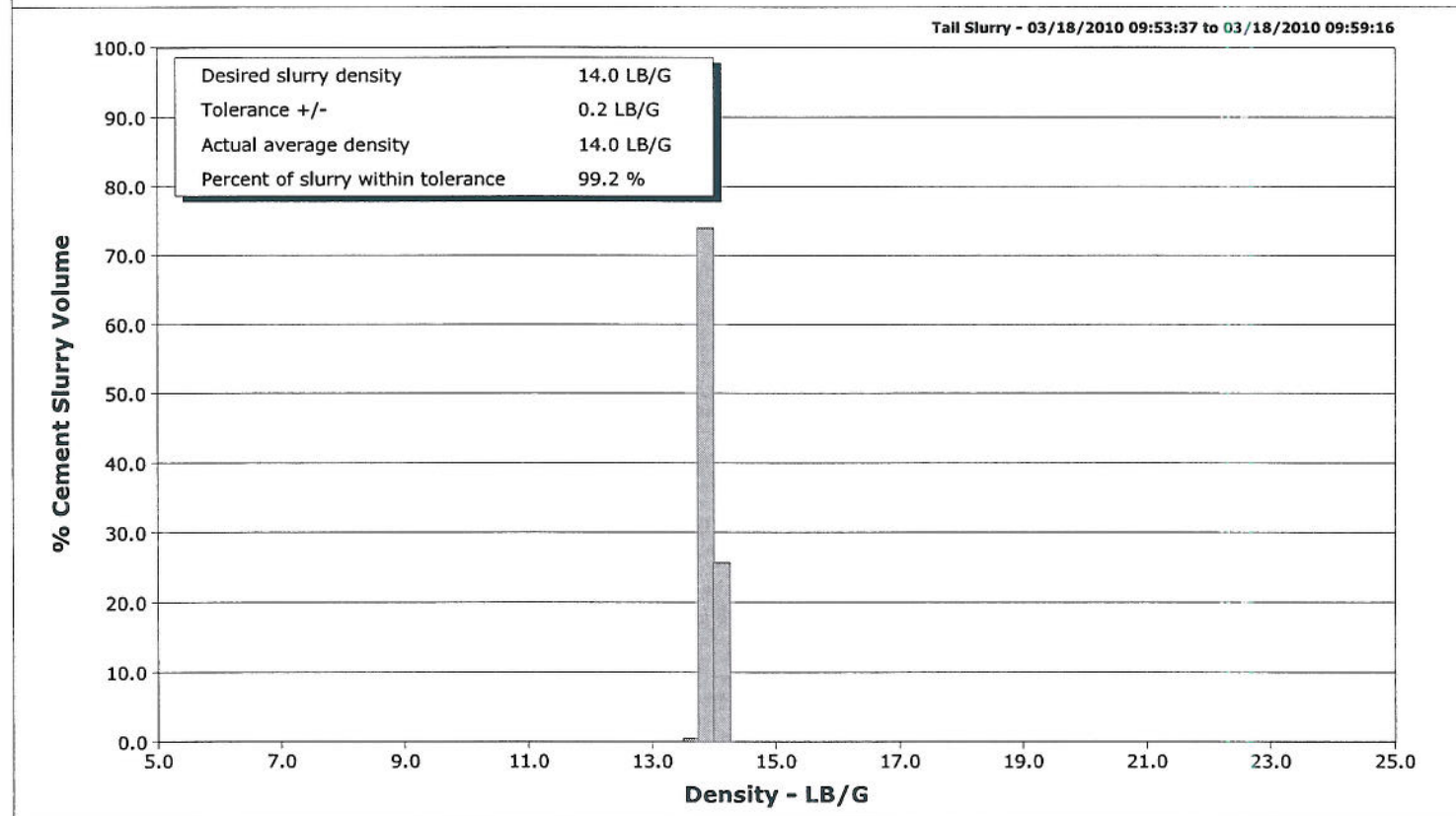
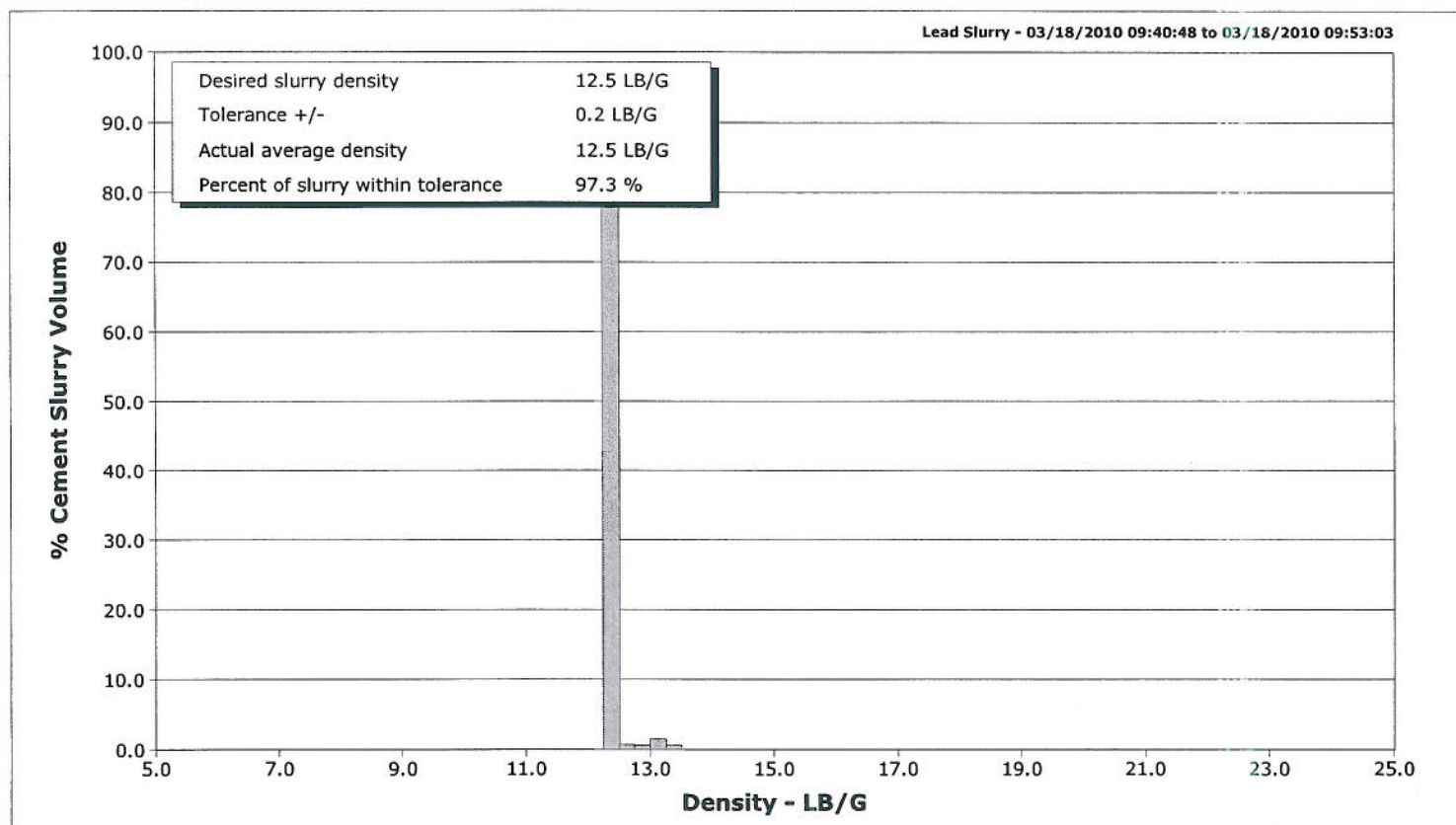


Well	EF10D-21 C28 595	Client	Encana
Field	N Parachute	SIR No.	B21J-00116
Engineer	Terry Borg	Job Type	9 5/8
Country	United States	Job Date	03-18-2010



Schlumberger Cementing Qa/Qc Density Report

Well	EF10D-21 C28 595	Client	Encana
Field	N Parachute	SIR No.	B21J-00116
Engineer	Terry Borg	Job Type	9 5/8
Country	United States	Job Date	03-18-2010





Cementing Service Report

				Customer Encana		Job Number B211-00116		
Well EF10D-21 C28 595 C 28			Location (legal) C 28		Schlumberger Location GCO		Job Start Mar/18/2010	
Field N Parachute		Formation Name/Type Shale		Deviation	Bit Size 12.3 in	Well MD 1732.0 ft	Well TVD 1732.0 ft	
County Garfield		State/Province Colorado		BHP	BHST 100 degF	BHCT 87 degF	Pore Press. Gradient	
Well Master 0631163081		API/UWI						
Rig Name Nabors M-13		Drilled For Gas	Service Via Land		Casing/Liner			
			Depth, ft	Size, in	Weight, lb/ft	Grade	Thread	
Offshore Zone		Well Class New	Well Type Development		1732.0	9.630	36.0	K55
			0.0	0.000	0.0			
Drilling Fluid Type Bentonite		Max. Density	Plastic Viscosity		Tubing/Drill Pipe			
			Depth,	Size,	Weight,	Grade	Thread	
Service Line Cementing		Job Type 9 5/8 surface						
Max. Allowed Tub. Press		Max. Allowed Ann. Press	WH Connection 9 5/8		Perforations/Open Hole			
			Top,	Bottom,		No. of Shots	Total Interval	
							Diameter	
			Treat Down Casing	Displacement 131.0 bbl	Packer Type	Packer Depth		
			Tubing Vol.	Casing Vol. 133.0 bbl	Annular Vol. 106.0 bbl	Openhole Vol. 250.0 bbl		
Casing/Tubing Secured <input checked="" type="checkbox"/>		1 Hole Vol. Circulated prior to Cement <input checked="" type="checkbox"/>		Casing Tools		Squeeze Job		
Lift Pressure 857 psi		Shoe Type Guide		Squeeze Type				
Pipe Rotated <input type="checkbox"/>		Pipe Reciprocated <input type="checkbox"/>		Shoe Depth 1732.0 ft		Tool Type		
No. Centralizers 22		Top Plugs 1	Bottom Plugs		Stage Tool Type		Tool Depth	
Cement Head Type Single		Stage Tool Depth		Tail Pipe Size				
Job Scheduled For Mar/18/2010 03:00		Arrived on Location Mar/18/2010 06:30	Leave Location Mar/18/2010		Collar Type Diff-Fill		Tail Pipe Depth	
					Collar Depth 1694.0 ft		Sqz. Total Vol.	
Date	Time 24-hr clock	Treating Pressure PSI	Flow Rate B/M	Density LB/G	Volume BBL	Message		
03/18/2010	08:41:52					Started Acquisition		
03/18/2010	09:30:29					Start Job		
03/18/2010	09:30:29	463	0.0	8.52	0.0			
03/18/2010	09:30:30					Held safty meeting		
03/18/2010	09:30:30	463	0.0	8.52	0.0			
03/18/2010	09:30:38					Pressure Test Lines		
03/18/2010	09:30:38	461	0.0	8.52	0.0			
03/18/2010	09:30:41					500 psi test good		
03/18/2010	09:30:41	461	0.0	8.52	0.0			
03/18/2010	09:31:52	2840	0.0	8.52	0.0			
03/18/2010	09:32:10					Pressure Test Lines		
03/18/2010	09:32:10	3480	0.0	8.52	0.0			
03/18/2010	09:32:12					3000 psi test good		
03/18/2010	09:32:12	3480	0.0	8.52	0.0			
03/18/2010	09:33:32	3102	0.0	8.50	0.0			
03/18/2010	09:34:49					Start Pumping Water		
03/18/2010	09:34:49	13	0.0	8.35	0.0			
03/18/2010	09:34:51					20 bbl		
03/18/2010	09:34:51	13	0.0	8.35	0.0			
03/18/2010	09:35:12	13	0.0	8.35	0.0			
03/18/2010	09:36:52	118	3.6	8.35	3.5			

Well			Field	Job Start		Customer	Job Number
EF10D-21 C28 595 C 28			N Parachute	Mar/18/2010		Encana	B21J-00116
Date	Time 24-hr clock	Treating Pressure PSI	Flow Rate B/M	Density LB/G	Volume BBL	Message	
03/18/2010	09:39:57					End Water	
03/18/2010	09:39:57	183	5.0	8.35	18.6		
03/18/2010	09:40:00					Start Mixing Scav Slurry	
03/18/2010	09:40:00	187	5.0	8.35	18.8		
03/18/2010	09:40:12	205	5.0	11.77	19.8		
03/18/2010	09:40:21					Bring to weight 8.33 to 12.5 ppg	
03/18/2010	09:40:21	252	5.0	12.23	20.5		
03/18/2010	09:40:44					End Scavenger Slurry	
03/18/2010	09:40:44	262	5.0	12.41	22.5		
03/18/2010	09:40:48					Start Mixing Lead Slurry	
03/18/2010	09:40:48	261	5.0	12.40	22.8		
03/18/2010	09:40:52					92 bbl @ 12.5 ppg	
03/18/2010	09:40:52	259	5.0	12.40	23.1		
03/18/2010	09:40:53					Good returns	
03/18/2010	09:40:53	266	5.0	12.40	23.2		
03/18/2010	09:40:54					Sample = 12.5 ppg	
03/18/2010	09:40:54	274	5.0	12.40	23.3		
03/18/2010	09:41:52	499	7.5	12.42	28.8		
03/18/2010	09:43:32	528	7.6	12.44	41.7		
03/18/2010	09:45:12	404	7.5	12.46	54.3		
03/18/2010	09:46:52	474	8.2	12.46	67.1		
03/18/2010	09:48:32	453	8.2	12.42	80.7		
03/18/2010	09:50:12	468	8.2	12.41	94.3		
03/18/2010	09:51:52	484	8.2	12.43	108.0		
03/18/2010	09:53:03					End Lead Slurry	
03/18/2010	09:53:03	367	6.4	13.33	116.4		
03/18/2010	09:53:08					Start Mixing Scav Slurry	
03/18/2010	09:53:08	343	6.4	13.39	116.9		
03/18/2010	09:53:17					Bring to weight 12.5 ppg to 14.0 ppg	
03/18/2010	09:53:17	357	6.4	13.48	117.9		
03/18/2010	09:53:32	371	6.4	13.76	119.5		
03/18/2010	09:53:35					End Scavenger Slurry	
03/18/2010	09:53:35	361	6.4	13.79	119.8		
03/18/2010	09:53:37					Start Mixing Tail Slurry	
03/18/2010	09:53:37	367	6.4	13.84	120.0		
03/18/2010	09:53:38					38 bbl @ 14.0 ppg	
03/18/2010	09:53:38	363	6.4	13.86	120.1		
03/18/2010	09:53:39					Good returns	
03/18/2010	09:53:39	366	6.4	13.88	120.2		
03/18/2010	09:53:40					Sample = 14.0 ppg	
03/18/2010	09:53:40	371	6.4	13.90	120.3		
03/18/2010	09:55:12	389	6.4	13.92	130.2		
03/18/2010	09:56:52	378	6.4	13.99	140.8		
03/18/2010	09:58:32	387	6.4	14.11	151.5		
03/18/2010	09:59:16					End Tail Slurry	
03/18/2010	09:59:16	131	6.1	14.00	156.2		
03/18/2010	09:59:22					Drop Top Plug	
03/18/2010	09:59:22	8	1.4	14.33	156.6		
03/18/2010	09:59:24					Start Displacement	
03/18/2010	09:59:24	17	0.5	14.36	156.6		
03/18/2010	09:59:31					131 bbl water displacement	
03/18/2010	09:59:31	16	0.1	14.37	156.6		
03/18/2010	10:00:12	15	0.0	14.25	156.6		
03/18/2010	10:01:52	15	0.0	14.18	156.6		

Well			Field	Job Start	Customer	Job Number
EF10D-21 C28 S95 C 28			N Parachute	Mar/18/2010	Encana	B21J-00116
Date	Time 24-hr clock	Treating Pressure PSI	Flow Rate B/M	Density LB/G	Volume BBL	Message
03/18/2010	10:05:12	73	3.4	8.68	164.6	
03/18/2010	10:06:47					Good returns
03/18/2010	10:06:47	195	6.5	8.41	172.7	
03/18/2010	10:06:52	198	6.5	8.40	173.3	
03/18/2010	10:08:32	194	6.4	8.37	184.0	
03/18/2010	10:10:12	186	6.4	8.35	194.7	
03/18/2010	10:11:52	184	6.4	8.34	205.4	
03/18/2010	10:13:32	231	6.3	8.35	216.0	
03/18/2010	10:15:12	301	6.3	8.35	226.5	
03/18/2010	10:16:52	367	6.4	8.35	237.1	
03/18/2010	10:18:32	420	6.3	8.35	247.6	
03/18/2010	10:20:12	493	6.3	8.35	258.1	
03/18/2010	10:21:52	537	6.3	8.35	268.6	
03/18/2010	10:23:32	471	4.4	8.35	277.2	
03/18/2010	10:25:12	425	2.4	8.35	283.4	
03/18/2010	10:26:52	446	2.4	8.35	287.4	
03/18/2010	10:28:05					26 bbl cement back to surface
03/18/2010	10:28:05	1042	0.3	8.35	290.2	
03/18/2010	10:28:10					Bump Top Plug
03/18/2010	10:28:10	1043	0.0	8.35	290.2	
03/18/2010	10:28:12					End Displacement
03/18/2010	10:28:12	1039	0.0	8.35	290.2	
03/18/2010	10:28:32	1039	0.0	8.35	290.2	
03/18/2010	10:30:12	1040	0.0	8.35	290.2	
03/18/2010	10:31:52	1041	0.0	8.35	290.2	
03/18/2010	10:33:32					1 bbl back
03/18/2010	10:33:32	1043	0.0	8.35	290.2	
03/18/2010	10:35:12	8	0.0	8.35	290.2	
03/18/2010	10:36:39					End Job
03/18/2010	10:36:39	7	0.0	8.35	290.2	
03/18/2010	10:36:52	8	0.0	8.35	290.2	
03/18/2010	14:33:29					Start top out on B21J-00115
03/18/2010	14:33:29	9	0.0	8.35	0.0	
03/18/2010	14:33:32	9	0.0	8.35	0.0	
03/18/2010	14:35:12	9	0.0	8.35	0.0	
03/18/2010	14:36:52	8	0.0	8.35	0.0	
03/18/2010	14:38:32	9	0.0	8.35	0.0	
03/18/2010	14:39:21					Start Pumping Water
03/18/2010	14:39:21	7	0.0	8.35	0.0	
03/18/2010	14:40:12	7	0.0	8.35	0.0	
03/18/2010	14:41:52	10	0.3	8.35	0.0	
03/18/2010	14:43:32	37	1.5	8.34	0.8	
03/18/2010	14:45:12	3	0.0	8.34	1.9	
03/18/2010	14:46:15					Make sure 1" not plugged
03/18/2010	14:46:15	3	0.0	8.34	1.9	
03/18/2010	14:46:16					Have returns
03/18/2010	14:46:16	3	0.0	8.35	1.9	
03/18/2010	14:46:19					End Water
03/18/2010	14:46:19	3	0.0	8.34	1.9	
03/18/2010	14:46:36					Start Mixing Tail Slurry
03/18/2010	14:46:36	3	0.0	8.34	1.9	
03/18/2010	14:46:52	5	0.0	8.34	1.9	
03/18/2010	14:48:32	5	0.0	8.34	1.9	
03/18/2010	14:50:12	35	1.3	14.30	3.6	

Well			Field	Job Start		Customer	Job Number
EF10D-21 C28 595 C 28			N Parachute	Mar/18/2010		Encana	B21J-00116
Date	Time 24-hr clock	Treating Pressure PSI	Flow Rate B/M	Density LB/G	Volume BBL	Message	
03/18/2010	14:53:32	50	1.3	14.18	8.0		
03/18/2010	14:55:12	49	1.3	14.21	10.2		
03/18/2010	14:56:52	-1	0.0	14.21	11.8		
03/18/2010	14:58:32	1	0.0	14.20	11.8		
03/18/2010	15:00:12	1	0.0	14.22	11.8		
03/18/2010	15:01:52	1	0.0	14.24	11.8		
03/18/2010	15:03:32	1	0.0	14.25	11.8		
03/18/2010	15:05:12	2	0.0	14.27	11.8		
03/18/2010	15:06:52	2	0.0	14.29	11.8		
03/18/2010	15:08:32	1	0.0	14.31	11.8		
03/18/2010	15:10:12	1	0.0	14.33	11.8		
03/18/2010	15:11:52	2	0.0	14.34	11.8		
03/18/2010	15:13:32	1	0.0	14.36	11.8		
03/18/2010	15:15:12	2	0.0	14.37	11.8		
03/18/2010	15:16:52	11	0.4	14.34	12.3		
03/18/2010	15:18:32	12	0.4	14.25	13.0		
03/18/2010	15:20:12	51	1.4	14.20	14.0		
03/18/2010	15:21:52	53	1.4	14.21	16.2		
03/18/2010	15:23:32	1	0.0	14.27	16.4		
03/18/2010	15:25:12	1	0.0	14.29	16.4		
03/18/2010	15:26:52	1	0.0	14.31	16.4		
03/18/2010	15:28:32	1	0.0	14.34	16.4		
03/18/2010	15:30:12	1	0.0	14.38	16.4		
03/18/2010	15:31:13					14.0 ppg	
03/18/2010	15:31:13	1	0.0	14.39	16.4		
03/18/2010	15:31:52	0	0.0	14.35	16.4		
03/18/2010	15:33:32	-0	0.0	14.40	16.4		
03/18/2010	15:35:12	1	0.0	14.47	16.4		
03/18/2010	15:36:52	1	0.0	14.52	16.5		
03/18/2010	15:38:32	2	0.0	14.57	16.5		
03/18/2010	15:39:52					pumped 10 bbl wait pump 5 bbl wait pump 5bbl end	
03/18/2010	15:39:52	1	0.0	14.60	16.5		
03/18/2010	15:40:12	1	0.0	14.61	16.5		
03/18/2010	15:41:52	1	0.0	14.64	16.5		
03/18/2010	15:43:32	1	0.0	14.67	16.5		
03/18/2010	15:45:12	1	0.0	14.70	16.5		
03/18/2010	15:46:52	7	0.0	14.60	16.6		
03/18/2010	15:48:32	8	0.1	14.64	16.6		
03/18/2010	15:50:12	73	1.5	15.56	17.7		
03/18/2010	15:50:38					End Tail Slurry	
03/18/2010	15:50:38	70	1.5	15.35	18.3		
03/18/2010	15:51:52	72	1.5	15.16	20.1		
03/18/2010	15:53:32	6	0.0	14.01	22.1		
03/18/2010	15:55:12	6	0.2	14.28	22.1		
03/18/2010	15:56:52	57	2.2	9.13	24.2		
03/18/2010	15:58:32	54	2.6	8.57	29.8		
03/18/2010	15:58:40					20 bbl on top out	
03/18/2010	15:58:40	78	2.8	8.49	30.1		
03/18/2010	15:59:08					End Job	
03/18/2010	15:59:08	102	4.1	8.48	32.0		
03/18/2010	15:59:09					Wash up to pit	
03/18/2010	15:59:09	102	4.1	8.48	32.1		

Well EF10D-21 C28 595 C 28	Field N Parachute	Job Start Mar/18/2010	Customer Encana	Job Number B21J-00116
--------------------------------------	-----------------------------	---------------------------------	---------------------------	---------------------------------

Post Job Summary

Average Pump Rates, bbl/min					Volume of Fluid Injected, bbl			
Slurry 5.8	N2	Mud 0.0	Maximum Rate 8.2	Total Slurry 130.0	Mud 0.0	Spacer 20.0	N2	
Treating Pressure Summary, psi					Breakdown Fluid			
Maximum 3484	Final 1000	Average 436	Bump Plug to 1000	Breakdown	Type	Volume	Density	
Avg. N2 Percent	Designed Slurry Volume 130.0 bbl	Displacement 131.0 bbl	Mix Water Temp 60 degF	Cement Circulated to Surface? <input checked="" type="checkbox"/>	Volume 26.0 bbl			
				Washed Thru Perfs <input type="checkbox"/>	To			
Customer or Authorized Representative Floyd Roberts		Schlumberger Supervisor Terry Borg			Circulation Lost <input type="checkbox"/>	Job Completed <input checked="" type="checkbox"/>		
				-		-		