
OXY GRAND JUNCTION EBUSINESS

**CC 697-10-59
GRAND VALLEY
Garfield County , Colorado**

**Cement Surface Casing
01-Oct-2010**

Post Job Summary

The Road to Excellence Starts with Safety

Sold To #: 344034		Ship To #: 2810393		Quote #:		Sales Order #: 7671639	
Customer: OXY GRAND JUNCTION EBUSINESS				Customer Rep: Dillion, Pat			
Well Name: CC		Well #: 697-10-59		API/UWI #: 05-045-18023			
Field: GRAND VALLEY		City (SAP): PARACHUTE		County/Parish: Garfield		State: Colorado	
Lat: N 39.53 deg. OR N 39 deg. 31 min. 46.438 secs.				Long: W 108.213 deg. OR W -109 deg. 47 min. 12.923 secs.			
Contractor: H&P Drilling		Rig/Platform Name/Num: H&P 353					
Job Purpose: Cement Surface Casing							
Well Type: Development Well				Job Type: Cement Surface Casing			
Sales Person:		Srvc Supervisor: PHILLIPS, MARK			MBU ID Emp #: 445272		
Job Personnel							
HES Emp Name	Exp Hrs	Emp #	HES Emp Name	Exp Hrs	Emp #	HES Emp Name	Exp Hrs
HAYES, JESSE Doug	15	403601	HUGENTOBLE, LOGAN Mark	15	447333	KUKUS, CHRISTOPHER A	15
KUKUS, CRAIG A	15	369124	PHILLIPS, MARK Bejar	15	445272		
Equipment							
HES Unit #	Distance-1 way	HES Unit #	Distance-1 way	HES Unit #	Distance-1 way	HES Unit #	Distance-1 way
10784080	120 mile	10804579	120 mile	10822535	120 mile	10867094	120 mile
10897925	120 mile	10951250	120 mile	11360871	120 mile	11542767	120 mile
Job Hours							
Date	On Location Hours	Operating Hours	Date	On Location Hours	Operating Hours	Date	On Location Hours
10-1-10	15	3					
TOTAL		<i>Total is the sum of each column separately</i>					
Job				Job Times			
Formation Name				Date			
Formation Depth (MD)				Time			
Top				Time Zone			
Bottom				Called Out			
Form Type				On Location			
Job depth MD				Job Started			
Water Depth				Job Completed			
Perforation Depth (MD)				Departed Loc			
From				To			
Well Data							
Description	New / Used	Max pressure psig	Size in	ID in	Weight lbm/ft	Thread	Grade
Sales/Rental/3rd Party (HES)							
Description						Qty	Qty uom
Depth						Supplier	
PLUG,CMTG,TOP,9 5/8,HWE,8.16 MIN/9.06 MA						1	EA
R/A DENSOMETER W/CHART RECORDER,/JOB,ZI						1	JOB
PORT. DATA ACQUIS. W/OPTICEM RT W/HES						1	EA
ADC (AUTO DENSITY CTRL) SYS, /JOB,ZI						1	JOB
Tools and Accessories							
Type	Size	Qty	Make	Depth	Type	Size	Qty
Guide Shoe					Top Plug	9.625	1
Float Shoe					Bottom Plug		
Float Collar					SSR plug set		
Insert Float					Plug Container	9.625	
Stage Tool					Centralizers		
Miscellaneous Materials							
Gelling Agt		Conc		Surfactant		Conc	
Treatment Fld		Conc		Inhibitor		Conc	
					Acid Type	Qty	Conc %
					Sand Type	Size	Qty

Fluid Data									
Stage/Plug #: 1									
Fluid #	Stage Type	Fluid Name	Qty	Qty uom	Mixing Density lbm/gal	Yield ft ³ /sk	Mix Fluid Gal/sk	Rate bbl/min	Total Mix Fluid Gal/sk
1	Water Spacer		10.00	bbl	8.33	.0	.0	4	
2	Super Flush 101	SUPER FLUSH 101 - SBM (12199)	20.00	bbl	10.	.0	.0	4	
3	Water Spacer		10.00	bbl	.	.0	.0	4	
4	Lead Cement	VERSACEM (TM) SYSTEM (452010)	1065.0	sacks	12.3	2.33	12.62	6	12.62
		12.62 Gal	FRESH WATER						
5	Tail Cement	VERSACEM (TM) SYSTEM (452010)	106.0	sacks	12.8	2.07	10.67	6	10.67
		10.67 Gal	FRESH WATER						
6	Displacement			bbl	.	.0	.0	6	
7	Topout Cement	HALCEM (TM) SYSTEM (452986)		sacks	12.5	1.97	10.96		10.96
		10.96 Gal	FRESH WATER						
Calculated Values		Pressures		Volumes					
Displacement	208	Shut In: Instant		Lost Returns	0	Cement Slurry	501	Pad	
Top Of Cement	SURFACE	5 Min		Cement Returns	230	Actual Displacement	208	Treatment	
Frac Gradient		15 Min		Spacers	40	Load and Breakdown		Total Job	769
Rates									
Circulating	2	Mixing		6	Displacement	6	Avg. Job		6
Cement Left In Pipe	Amount	53 ft	Reason	Shoe Joint					
Frac Ring # 1 @	ID		Frac ring # 2 @	ID		Frac Ring # 3 @	ID		Frac Ring # 4 @
The Information Stated Herein Is Correct				Customer Representative Signature					

The Road to Excellence Starts with Safety

Sold To #: 344034		Ship To #: 2810393		Quote #:		Sales Order #: 7671639	
Customer: OXY GRAND JUNCTION EBUSINESS				Customer Rep: Dillion, Pat			
Well Name: CC			Well #: 697-10-59			API/UWI #: 05-045-18023	
Field: GRAND VALLEY		City (SAP): PARACHUTE		County/Parish: Garfield		State: Colorado	
Legal Description:							
Lat: N 39.53 deg. OR N 39 deg. 31 min. 46.438 secs.				Long: W 108.213 deg. OR W -109 deg. 47 min. 12.923 secs.			
Contractor: H&P Drilling			Rig/Platform Name/Num: H&P 353				
Job Purpose: Cement Surface Casing						Ticket Amount:	
Well Type: Development Well			Job Type: Cement Surface Casing				
Sales Person:			Srv Supervisor: PHILLIPS, MARK			MBU ID Emp #: 445272	

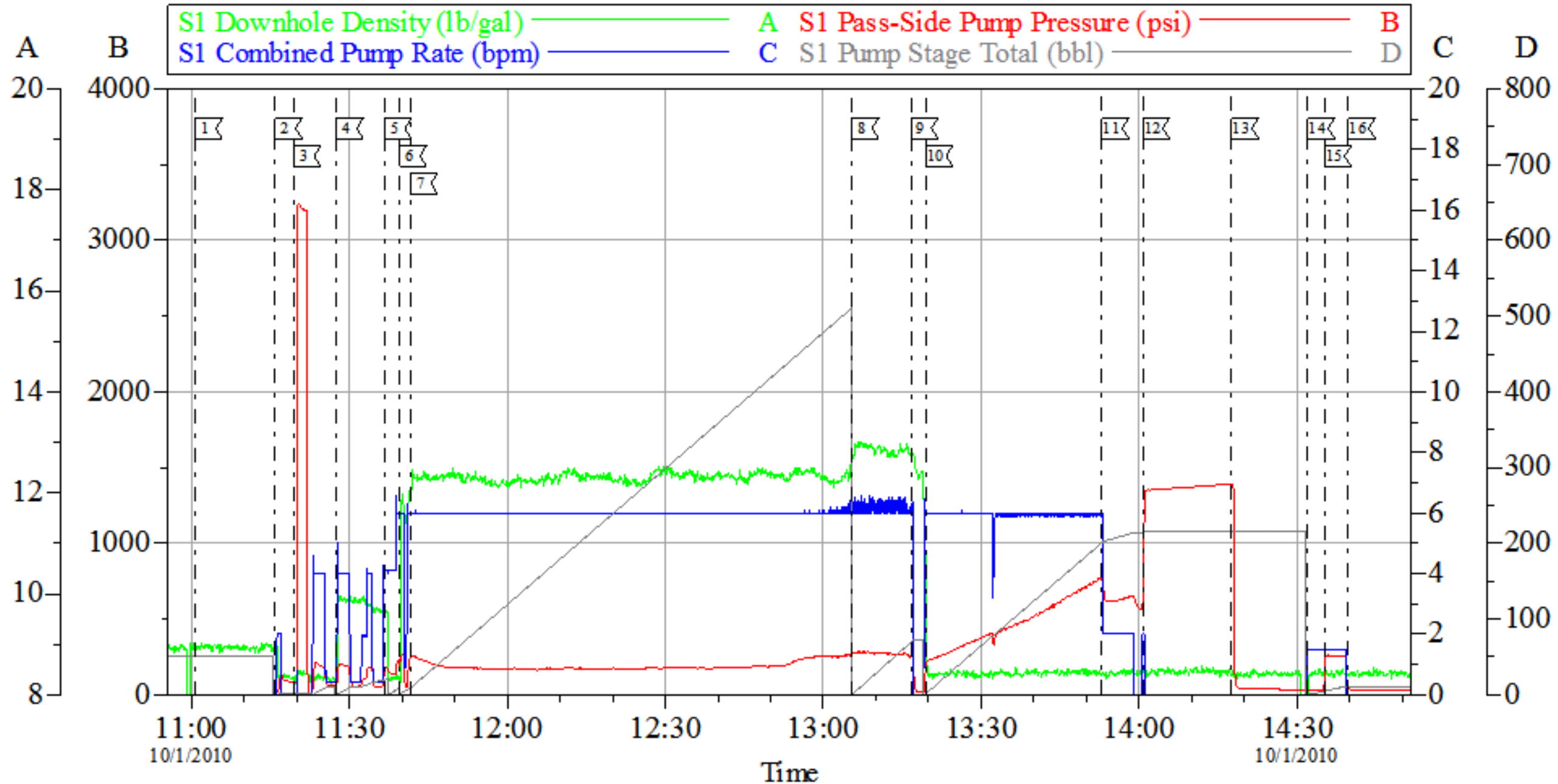
Activity Description	Date/Time	Cht #	Rate bbl/min	Volume bbl		Pressure psig		Comments
				Stage	Total	Tubing	Casing	
Call Out	09/30/2010 18:30							
Pre-Convoy Safety Meeting	09/30/2010 20:30							ALL HES EMPLOYEES
Arrive At Loc	10/01/2010 02:30							RIG STILL RUNNING CASING
Assessment Of Location Safety Meeting	10/01/2010 02:45							ALL HES EMPLOYEES
Rig-Up Equipment	10/01/2010 03:00							1 HT-400 PUMP TRUCK, 2 660 BULK TRUCK, 1 F-450 P/U, 1 QUICK LATCH PLUG CONTAINER, 1 1600 FEILD BIN, 1 SUPER FLUSH TRANSPORT. TIME STARTS FOR TRASNPORAT AT 0400
Pre-Job Safety Meeting	10/01/2010 11:00							ALL HES EMPLOYEES, RIG CREW, CO REP AND ANY 3RD PARTY VENDORS
Start Job	10/01/2010 11:15							SP 2746 FT, TD 2770 FT, FC 2693 FT, HOLE 14.75", MUD WT 9.2 PPG, RATE WILL BE 6-6-2, WILL BUMP 500 PSI OVER LAND PSI, RIG CIRCULATED HOLE FOR 1 HRS.SJ 53 FT. HES TO PUMP DOWN PARASITE AT END OF JOB USING SUGAR WATER
Pump Water	10/01/2010 11:16		2	2			89.0	FILL LINES PRIOR TO PRESSURE TESTING LINES

Activity Description	Date/Time	Cht #	Rate bbl/min	Volume bbl		Pressure psig		Comments
				Stage	Total	Tubing	Casing	
Pressure Test	10/01/2010 11:21		0.5			3000.0		NO LEAKS, KICK OUTS SET TO 3000 PSI FOR TEST.
Pump Spacer 1	10/01/2010 11:25		4	10			210.0	FRESH WATER
Pump Spacer 1	10/01/2010 11:28		4	20			200.0	SUPER FLUSH
Pump Spacer 1	10/01/2010 11:32		6	10			200.0	FRESH WATER
Pump Lead Cement	10/01/2010 11:45		6	442			180.0	1665 SKS VERSACEM CMT TO BE MIXED AT 12.3 PPG, 2.33 YIELD, 12.62 GAL/SK, CMT TO BE WEIGHED VIA PRESSURE BALANCED MUD SCALES WET AND DRY SAMPLES SUBMITTED.THESE ARE CALCULATED VALUES, TTL PUMPED PER BBL COUNTER WAS 510 BBLS CMT.
Pump Tail Cement	10/01/2010 13:01		6	59			280.0	160 SKS VERSACEM CMT TO BE MIXED AT 12.8 PPG, 2.07 YIELD, 10.67 GAL/SK, CMT TO BE WEIGHED VIA PRESSURE BALANCED MUD SCALES, WET AND DRY SAMPLES SUBMITTED, ACCORDING TO BBL COUNTER WE PUMPED 10 BBLS MORE THAN WHAT WAS CALCULATED.
Cement Returns to Surface	10/01/2010 13:11		6					230 BBLS TO SURFACE CALCULATED IS 164 BBLS.
Shutdown	10/01/2010 13:19							
Drop Plug	10/01/2010 13:20							PLUG LAUNCHED
Pump Displacement	10/01/2010 13:21		6	208.2			510.0	FRESH WATER

Activity Description	Date/Time	Cht #	Rate bbl/ min	Volume bbl		Pressure psig		Comments
				Stage	Total	Tubing	Casing	
Slow Rate	10/01/2010 13:54		2	198.2			640.0	10 BBLS PRIOR TO CALCULATED DISPLACEMENT
Bump Plug	10/01/2010 14:02		2	208.2			640.0	PLUG LANDED
Check Floats	10/01/2010 14:18						1500. 0	FLOATS HOLDING, 1.5 BBLS BACK.
End Job	10/01/2010 14:20							THANK YOU FOR USING HES FROM LOGAN HUGENTOBLE AND CREW
Other	10/01/2010 14:28		1.5	12		250.0		PUMP SUGAR WATER THROUGH PARASITE
Post-Job Safety Meeting (Pre Rig-Down)	10/01/2010 14:38							ALL HES EMPLOYEES
Rig-Down Equipment	10/01/2010 14:40							
Pre-Convoy Safety Meeting	10/01/2010 15:40							ALL HES EMPLOYEES
Crew Leave Location	10/01/2010 15:50							LOCATION CLEAN

OXY

CC 697-10-59 SURFACE



Local Event Log			
1 START JOB	11:00:47	2 FILL LINES	11:15:55
4 H2O SPACER	11:27:33	5 SUPER FLUSH	11:36:43
7 LEAD CEMENT	11:41:39	8 TAIL CEMENT	13:05:26
10 START DISPLACEMENT	13:19:30	11 SLOW RATE	13:52:58
13 CHECK FLOATS	14:17:35	14 PUMP THROUGH PARASITE	14:32:03
16 END JOB	14:39:46	3 PRESSURE TEST	11:19:28
		6 H2O SPACER	11:39:33
		9 SHUTDOWN/DROP PLUG	13:16:43
		12 BUMP PLUG	14:00:41
		15 PRESSURE THROUGH GREASE PLUG	14:35:11

Customer: OXY	Job Date: 01-Oct-2010	Sales Order #: 7671639	OptiCem v6.4.5 01-Oct-10 15:59
Well Description: CC 679-10-59	Job Type: SURFACE	ADC USED YES	
Company Rep: PAT DILLON	Cement Supervisor: LOGAN HUGENTOBLE	Elite #1 CHRIS KUKAS	