

---

# **OXY GRAND JUNCTION EBUSINESS**

---

**CC 697-15-19A  
GRAND VALLEY  
Garfield County , Colorado**

**Cement Surface Casing  
10-Oct-2010**

**Post Job Report**

## The Road to Excellence Starts with Safety

Sold To #: 344034	Ship To #: 2812193	Quote #:	Sales Order #: 7684579
Customer: OXY GRAND JUNCTION EBUSINESS	Customer Rep: Dillion, Pat		
Well Name: CC	Well #: 697-15-19A	API/UWI #: 05-045-18027	
Field: GRAND VALLEY	City (SAP): DEBEQUE	County/Parish: Garfield	State: Colorado
Lat: N 39.529 deg. OR N 39 deg. 31 min. 46.146 secs.	Long: W 108.213 deg. OR W -109 deg. 47 min. 12.48 secs.		
Contractor: H&P 353	Rig/Platform Name/Num: H&P 353		
Job Purpose: Cement Surface Casing			
Well Type: Development Well	Job Type: Cement Surface Casing		
Sales Person: DUNNING, DUSTIN	Srvc Supervisor: KUKUS, CRAIG	MBU ID Emp #: 369124	

## Job Personnel

HES Emp Name	Exp Hrs	Emp #	HES Emp Name	Exp Hrs	Emp #	HES Emp Name	Exp Hrs	Emp #
CALDWELL, JEFFREY S	15	369111	CUNNINGHAM, TANNER	15	445660	KUKUS, CRAIG A	15	369124
WYCKOFF, RYAN Scott	15	476117						

## Equipment

HES Unit #	Distance-1 way	HES Unit #	Distance-1 way	HES Unit #	Distance-1 way	HES Unit #	Distance-1 way
10533645	120 mile	10822535	120 mile	10829469	120 mile	11139328	120 mile
11360883	120 mile						

## Job Hours

Date	On Location Hours	Operating Hours	Date	On Location Hours	Operating Hours	Date	On Location Hours	Operating Hours
10/9/10	3		10/10/10	12	5			

**TOTAL** Total is the sum of each column separately

## Job

Formation Name	Top	Bottom	Called Out	Date	Time	Time Zone
Formation Depth (MD)			On Location	09 - Oct - 2010	14:00	MST
Form Type		BHST	Job Started	09 - Oct - 2010	21:00	MST
Job depth MD	2468. ft	Job Depth TVD	Job Completed	10 - Oct - 2010	00:46	MST
Water Depth		Wk Ht Above Floor	Departed Loc	10 - Oct - 2010	10:37	MST
Perforation Depth (MD)	From	To		10 - Oct - 2010	12:15	MST

## Well Data

Description	New / Used	Max pressure psig	Size in	ID in	Weight lbm/ft	Thread	Grade	Top MD ft	Bottom MD ft	Top TVD ft	Bottom TVD ft
-------------	------------	-------------------	---------	-------	---------------	--------	-------	-----------	--------------	------------	---------------

Sales/Rental/3<sup>rd</sup> Party (HES)

Description	Qty	Qty uom	Depth	Supplier
PLUG,CMTG,TOP,9 5/8,HWE,8.16 MIN/9.06 MA	1	EA		
R/A DENSOMETER W/CHART RECORDER,/JOB,ZI	1	JOB		
ADC (AUTO DENSITY CTRL) SYS, /JOB,ZI	1	JOB		

## Tools and Accessories

Type	Size	Qty	Make	Depth	Type	Size	Qty	Make	Depth	Type	Size	Qty	Make
Guide Shoe					Packer					Top Plug	9 5/8	1	HES
Float Shoe					Bridge Plug					Bottom Plug			
Float Collar					Retainer					SSR plug set			
Insert Float										Plug Container	9 5/8	1	HES
Stage Tool										Centralizers			

## Miscellaneous Materials

Gelling Agt	Conc	Surfactant	Conc	Acid Type	Qty	Conc	%
Treatment Fld	Conc	Inhibitor	Conc	Sand Type	Size		Qty

## Fluid Data

Stage/Plug #: 1

Fluid #	Stage Type	Fluid Name	Qty	Qty uom	Mixing Density lbm/gal	Yield ft <sup>3</sup> /sk	Mix Fluid Gal/sk	Rate bbl/min	Total Mix Fluid Gal/sk
1	Water Spacer		20.00	bbl	8.33	.0	.0	.0	
2	Super Flush 101	SUPER FLUSH 101 - SBM (12199)	20.00	bbl	10.	.0	.0	.0	
3	Water Spacer		20.00	bbl	.	.0	.0	.0	
4	Lead Cement	VERSACEM (TM) SYSTEM (452010)	891.0	sacks	12.3	2.33	12.62		12.62
		12.62 Gal	FRESH WATER						
5	Tail Cement	VERSACEM (TM) SYSTEM (452010)	134.0	sacks	12.8	2.07	10.67		10.67
		10.67 Gal	FRESH WATER						
6	Displacement		184.00	bbl	.	.0	.0	.0	
7	Topout Cement	HALCEM (TM) SYSTEM (452986)	86.0	sacks	12.5	1.97	10.96		10.96
		10.96 Gal	FRESH WATER						
<b>Calculated Values</b>		<b>Pressures</b>		<b>Volumes</b>					
Displacement	184	Shut In: Instant		Lost Returns	0	Cement Slurry	449	Pad	
Top Of Cement	SURFACE	5 Min		Cement Returns	100	Actual Displacement	184	Treatment	
Frac Gradient		15 Min		Spacers	60	Load and Breakdown		Total Job	697
<b>Rates</b>									
Circulating		Mixing	6	Displacement	6	Avg. Job			6
Cement Left In Pipe	Amount	51.26 ft	Reason	Shoe Joint					
Frac Ring # 1 @	ID	Frac ring # 2 @	ID	Frac Ring # 3 @	ID	Frac Ring # 4 @	ID		
The Information Stated Herein Is Correct				Customer Representative Signature					

*The Road to Excellence Starts with Safety*

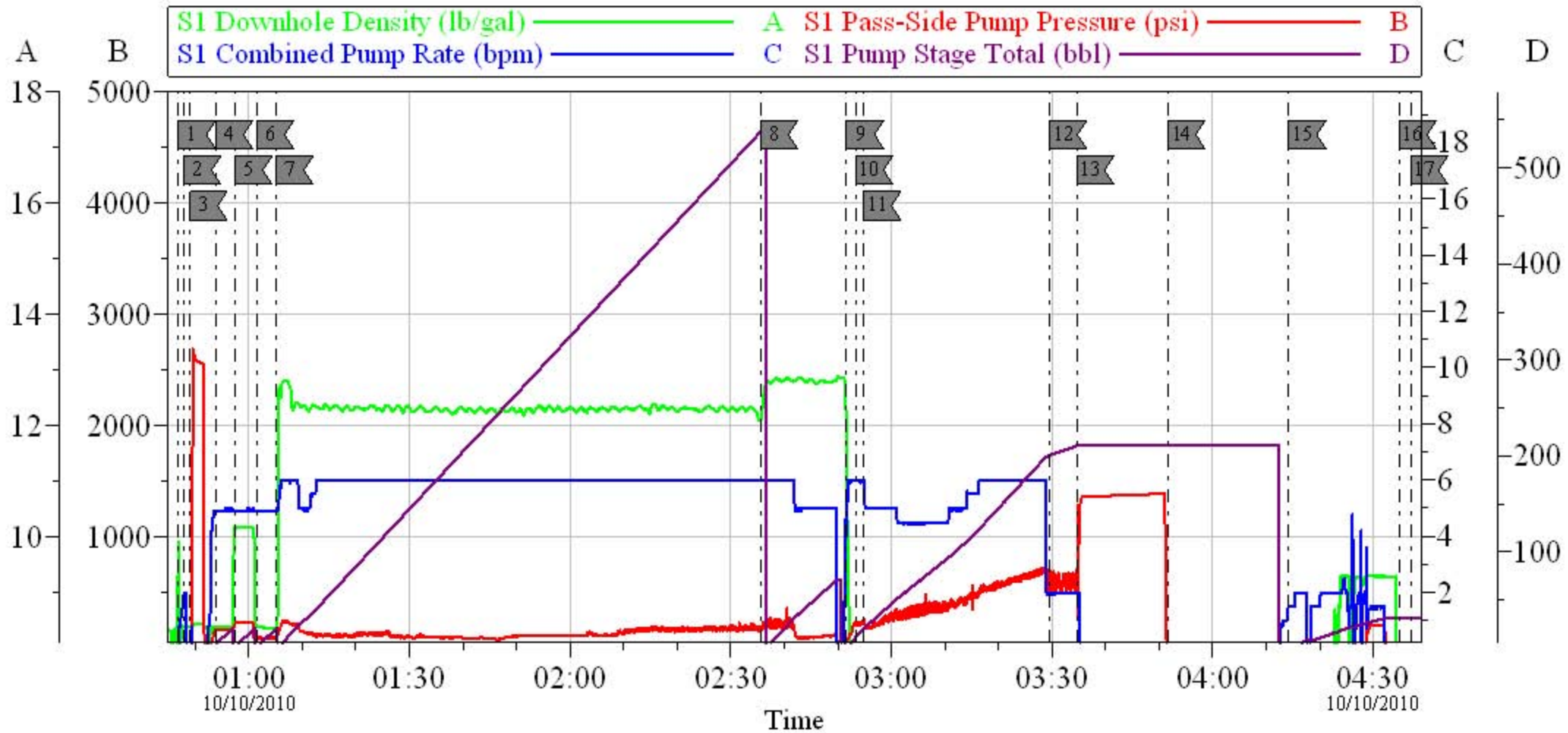
<b>Sold To #:</b> 344034		<b>Ship To #:</b> 2812193		<b>Quote #:</b>		<b>Sales Order #:</b> 7684579	
<b>Customer:</b> OXY GRAND JUNCTION EBUSINESS				<b>Customer Rep:</b> Dillion, Pat			
<b>Well Name:</b> CC			<b>Well #:</b> 697-15-19A			<b>API/UWI #:</b> 05-045-18027	
<b>Field:</b> GRAND VALLEY		<b>City (SAP):</b> DEBEQUE		<b>County/Parish:</b> Garfield			<b>State:</b> Colorado
<b>Legal Description:</b>							
<b>Lat:</b> N 39.529 deg. OR N 39 deg. 31 min. 46.146 secs.				<b>Long:</b> W 108.213 deg. OR W -109 deg. 47 min. 12.48 secs.			
<b>Contractor:</b> H&P 353			<b>Rig/Platform Name/Num:</b> H&P 353				
<b>Job Purpose:</b> Cement Surface Casing						<b>Ticket Amount:</b>	
<b>Well Type:</b> Development Well			<b>Job Type:</b> Cement Surface Casing				
<b>Sales Person:</b> DUNNING, DUSTIN			<b>Srvc Supervisor:</b> KUKUS, CRAIG			<b>MBU ID Emp #:</b> 369124	

Activity Description	Date/Time	Cht #	Rate bbl/min	Volume bbl		Pressure psig		Comments
				Stage	Total	Tubing	Casing	
Call Out	10/09/2010 14:00							
Depart Yard Safety Meeting	10/09/2010 16:15							SAFETY MEETING INVOLVING THE ENTIRE CMT CREW
Arrive At Loc	10/09/2010 21:00							RIG WAS RUNNING CS
Assessment Of Location Safety Meeting	10/09/2010 21:10							ASSESSMENT OF LOCATION INVOLVING THE ENTIRE CMT CREW
Pre-Rig Up Safety Meeting	10/09/2010 21:15							SAFETY MEETING INVOLVING THE ENTIRE CMT CREW
Rig-Up Equipment	10/09/2010 21:30							
Circulate Well	10/09/2010 23:00							RIG CIRCULATED OFF AN ON FOR 1 1/2 HRS HAD TROUBLE WITH CELLAR PUMPS
Pre-Job Safety Meeting	10/09/2010 23:30							SAFETY MEETING INVOLVING EVERYONE ON LOCATION
Start Job	10/10/2010 00:46							T.D 2468 T.P 2434 S.J 51.26 MUD WT 9.3 OH 14 3/4 PIP9 5/8 36#
Other	10/10/2010 00:47		2	2			36.0	PRIME LINES
Pressure Test	10/10/2010 00:48		0.5			2560.0		PRESSURE TEST GOOD
Pump Spacer 1	10/10/2010 00:53		5	20			188.0	FRESH WATER SPACER
Pump Spacer 1	10/10/2010 00:57		5	20			253.0	PUMP SUPER FLUSH

Activity Description	Date/Time	Cht #	Rate bbl/min	Volume bbl		Pressure psig		Comments
				Stage	Total	Tubing	Casing	
Pump Spacer 1	10/10/2010 01:01		5	20			136.0	PUMP H2O SPACER
Pump Lead Cement	10/10/2010 01:05		6	369			190.0	PUMP LEAD CEMENT AT 12.3 PPG 2.33 Y 12.62 GAL/SKS
Pump Tail Cement	10/10/2010 02:35		6	50			220.0	PUMP TAIL CEMENT AT 12.8 PPG 2.07 Y 10.67 GAL/SKS
Shutdown	10/10/2010 02:51							
Drop Top Plug	10/10/2010 02:53							PLUG LEFT THE PLUG CONTAINER
Pump Displacement	10/10/2010 02:54		6	184.2			700.0	HAD GOOD RETURNS /PUMP FRESH WATER
Slow Rate	10/10/2010 03:29		2	174			550.0	HAD RETURNS
Bump Plug	10/10/2010 03:34		2	184			1340.0	PLUG LANDED/ HOLD FOR 15MIN PER CO-MAN
Check Floats	10/10/2010 03:51							FLOATS HELD/GOT 1/2BBL BACK / SWAPED LINES AROUND TO PUMP DOWN PARASITE
Pump Spacer 1	10/10/2010 04:14		2	10			215.0	PUMP SUGAR WATER SPACER DOWN PARASITE
Shutdown	10/10/2010 04:14							SHUT DOWN READY LINES FOR TOP OUT
Start Job	10/10/2010 10:15							TOP OUT #1
Other	10/10/2010 10:15		2	2			3.0	PRIME LINES
Pump Cement	10/10/2010 10:17		2	15			4.0	PUMP TOP OUT CEMENT AT 12.5 PPG 1.97 Y 10.96 GAL/SKS
Shutdown	10/10/2010 10:29							CEMENT TO SURFACE 15 BBL / 43 SKS
Other	10/10/2010 10:33		2	2			26.0	PRIME LINES FOR TOP OUT #2
Pump Cement	10/10/2010 10:34		3	15			93.0	PUMP TOPOUT #2 AT 12.5 PPG 1.97 Y 10.96 GAL/SKS
Shutdown	10/10/2010 10:37							CEMENT TO SURFACE 15 BBL 43 SKS
End Job	10/10/2010 10:40							GET SET UP TO PUMP TOP OUT

Activity Description	Date/Time	Cht #	Rate bbl/ min	Volume bbl		Pressure psig		Comments
				Stage	Total	Tubing	Casing	
Pre-Rig Down Safety Meeting	10/10/2010 11:00							SAFETY MEETING INVOLVING THE ENTIRE CMT CREW
Rig-Down Equipment	10/10/2010 11:15							
Safety Meeting - Departing Location	10/10/2010 12:00							SAFETY MEETING INVOLVING THE ENTIRE CMT CREW
Comment	10/10/2010 12:15							THANK YOU FOR USING HALLIBURTON, CRAIG KUKUS AND CREW

# OXY SURFACE



## Local Event Log

1 START JOB	00:46:50	2 PRIME LINES	00:47:47	3 TEST LINES	00:48:59
4 PUMP H2O SPACER	00:53:47	5 PUMP SUPERFLUSH	00:57:22	6 PUMP H2O SPACER	01:01:28
7 PUMP LEAD CEMENT	01:05:03	8 PUMPTAIL CEMENT	02:35:32	9 SHUT DOWN	02:51:37
10 DROP PLUG	02:53:18	11 PUMP H2O DISPLACEMENT	02:54:44	12 SLOW RATE	03:29:32
13 BUMP PLUG	03:34:35	14 CHECK FLOATS	03:51:36	15 PUMP 10 BBL SUGAR WATER	04:14:10
16 SHUT DOWN	04:34:49	17 END JOB	04:36:57		

Customer: OXY  
Well Description: CC 697-15-19A  
Company Rep: HENERY COOMBS

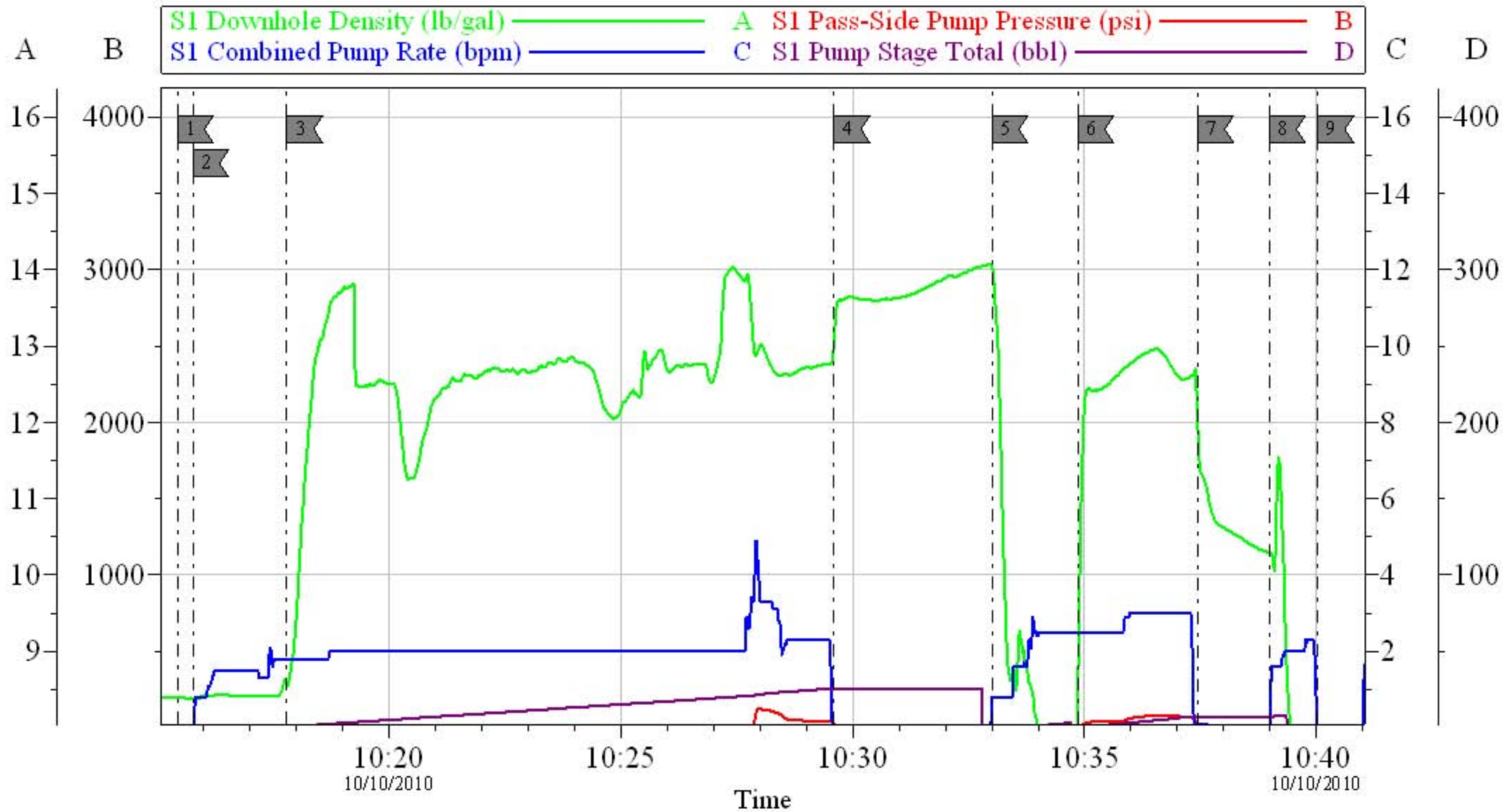
Job Date: 09-Oct-2010  
Job Type: SURFACE  
Cement Supervisor: CRAIG KUKUS

Sales Order #: 7684579  
ADC Used: YES  
Elite #/Operator: #7 TANNER CUNNINGHAM

OptiCern v6.4.8  
10-Oct-10 06:25



# OXY TOP OUT



## Local Event Log

1 START JOB	10:15:26	2 PRIME LINES	10:15:46	3 PUMP TOP OUT CMT #1	10:17:48
4 SHUTDOWN	10:29:36	5 PRIME LINES	10:33:00	6 PUMP TOP OUT #2	10:34:51
7 SHUT DOWN	10:37:27	8 CLEAN LINES	10:38:59	9 END JOB	10:40:02

Customer: OXY  
Well Description: CC-697-15-19A  
Company Rep: HENERY COOMBS

Job Date: 10-Oct-2010  
Job Type: TOP OUT  
Cement Supervisor: CRAIG KUKUS

Sales Order #: 7684579  
ADC Used: YES  
Elite #/Operator: #7 TANNER CUNNINGHAM

OptiCern v6.4.8  
10-Oct-10 10:59