

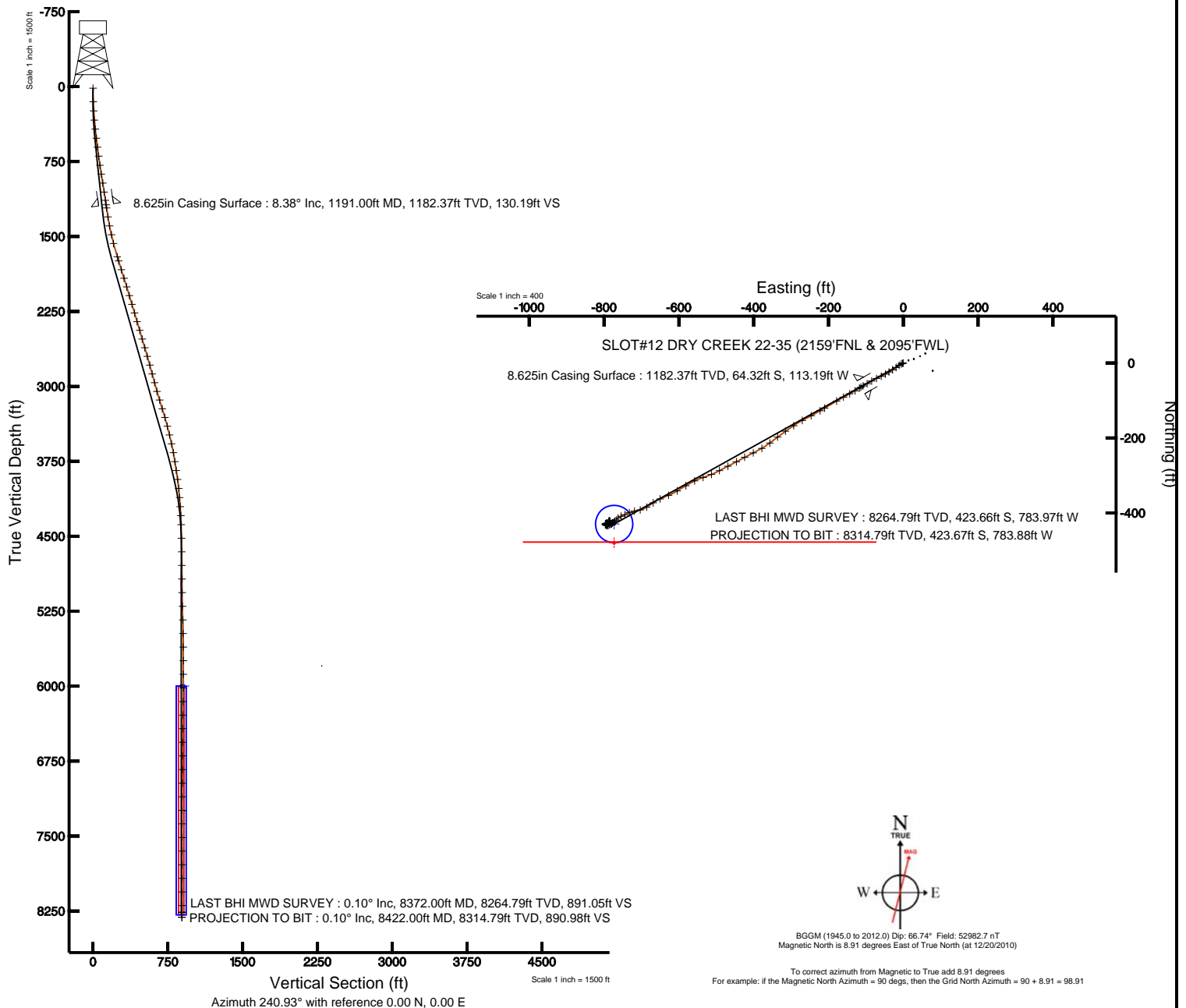


KERR MCGEE OIL & GAS ONSHORE LP

Location: COLORADO Slot: SLOT#12 DRY CREEK 22-35 (2159'FNL & 2095'FWL)
Field: WELD COUNTY (KERR MCGEE) Well: DRY CREEK 22-35
Facility: SEC.35-T1N-R67W Wellbore: DRY CREEK 22-35 PWB



Plot reference wellpath is DRY CREEK 22-35 (REV-A.0) PWP	
True vertical depths are referenced to XTREME 12 (RKB)	Grid System: NAD83 / Lambert Colorado State Planes, Northern Zone (501), US feet
Measured depths are referenced to XTREME 12 (RKB)	North Reference: True north
XTREME 12 (RKB) to Mean Sea Level: 5021 feet	Scale: True distance
Mean Sea Level to Mud line (Facility: SEC.35-T1N-R67W): 0 feet	Depths are in feet
Coordinates are in feet referenced to Slot	Created by: cookdamm on 2/6/2011





Actual Wellpath Report

DRY CREEK 22-35 AWP

Page 1 of 5



INTEQ

REFERENCE WELLPATH IDENTIFICATION

Operator	KERR MCGEE OIL & GAS ONSHORE LP	Slot	SLOT#12 DRY CREEK 22-35 (2159'FNL & 2095'FWL)
Area	COLORADO	Well	DRY CREEK 22-35
Field	WELD COUNTY (KERR MCGEE)	Wellbore	DRY CREEK 22-35 AWB
Facility	SEC.35-T1N-R67W		

REPORT SETUP INFORMATION

Projection System	NAD83 / Lambert Colorado State Planes, Northern Zone (501), US feet	Software System	WellArchitect® 2.0
North Reference	True	User	Cookdanm
Scale	0.999966	Report Generated	2/6/2011 at 10:56:10 PM
Convergence at slot	0.41° East	Database/Source file	Denver Server/DRY_CREEK_22-35_AWB.xml

WELLPATH LOCATION

	Local coordinates		Grid coordinates		Geographic coordinates	
	North[ft]	East[ft]	Easting[USft]	Northing[USft]	Latitude	Longitude
Slot Location	1107.49	1621.94	3179360.07	1246751.01	40°00'32.184"N	104°51'34.884"W
Facility Reference Pt			3177746.16	1245631.99	40°00'21.240"N	104°51'55.728"W
Field Reference Pt			3197771.84	1268891.29	40°04'09.600"N	104°47'36.000"W

WELLPATH DATUM

Calculation method	Minimum curvature	XTREME 12 (RKB) to Facility Vertical Datum	5021.00ft
Horizontal Reference Pt	Slot	XTREME 12 (RKB) to Mean Sea Level	5021.00ft
Vertical Reference Pt	XTREME 12 (RKB)	Facility Vertical Datum to Mud Line (Facility)	0.00ft
MD Reference Pt	XTREME 12 (RKB)	Section Origin	N 0.00, E 0.00 ft
Field Vertical Reference	Mean Sea Level	Section Azimuth	240.93°



Actual Wellpath Report

DRY CREEK 22-35 AWP

Page 2 of 5



INTEQ

REFERENCE WELLPATH IDENTIFICATION

Operator	KERR MCGEE OIL & GAS ONSHORE LP	Slot	SLOT#12 DRY CREEK 22-35 (2159'FNL & 2095'FWL)
Area	COLORADO	Well	DRY CREEK 22-35
Field	WELD COUNTY (KERR MCGEE)	Wellbore	DRY CREEK 22-35 AWB
Facility	SEC.35-T1N-R67W		

WELLPATH DATA (81 stations) † = interpolated/extrapolated station

MD [ft]	Inclination [°]	Azimuth [°]	TVD [ft]	Vert Sect [ft]	North [ft]	East [ft]	DLS [°/100ft]	Comments
0.00†	0.000	253.600	0.00	0.00	0.00	0.00	0.00	
15.00	0.000	253.600	15.00	0.00	0.00	0.00	0.00	
151.00	1.900	253.600	150.98	2.20	-0.64	-2.16	1.40	
243.00	2.800	239.600	242.90	5.93	-2.20	-5.56	1.15	
335.00	5.400	233.900	334.65	12.48	-5.89	-11.00	2.86	
426.00	7.100	234.300	425.11	22.32	-11.70	-19.03	1.87	
517.00	7.300	239.900	515.39	33.68	-17.88	-28.60	0.80	
608.00	6.900	238.200	605.70	44.92	-23.66	-38.25	0.50	
699.00	7.400	239.600	695.99	56.24	-29.51	-47.95	0.58	
790.00	8.100	244.800	786.16	68.50	-35.20	-58.80	1.09	
880.00	9.700	245.200	875.07	82.38	-41.08	-71.42	1.78	
971.00	9.000	238.500	964.86	97.14	-48.02	-84.45	1.42	
1062.00	8.700	241.000	1054.78	111.14	-55.07	-96.54	0.54	
1146.00	8.400	242.000	1137.85	123.62	-61.03	-107.51	0.40	
1223.00	8.400	235.000	1214.02	134.84	-66.90	-117.09	1.33	
1314.00	9.400	240.600	1303.93	148.88	-74.36	-129.01	1.45	
1405.00	11.200	242.400	1393.46	165.15	-82.10	-143.31	2.01	
1496.00	12.900	241.300	1482.45	184.14	-91.08	-160.06	1.89	
1586.00	14.000	238.900	1569.98	205.07	-101.52	-178.19	1.37	
1723.00	17.600	240.300	1701.78	242.36	-120.35	-210.38	2.64	
1768.00	17.800	238.500	1744.65	256.03	-127.32	-222.16	1.29	
1859.00	17.300	243.800	1831.42	283.44	-140.56	-246.16	1.84	
1949.00	17.600	239.900	1917.28	310.41	-153.29	-269.94	1.34	
2040.00	17.100	237.800	2004.14	337.53	-167.32	-293.16	0.88	
2131.00	16.400	234.600	2091.28	363.66	-181.89	-314.96	1.27	
2222.00	17.100	231.500	2178.43	389.62	-197.66	-335.90	1.25	
2313.00	16.600	233.600	2265.52	415.72	-213.71	-356.83	0.87	
2403.00	16.400	239.600	2351.82	441.17	-227.76	-378.14	1.91	
2494.00	17.000	244.500	2438.98	467.29	-239.99	-401.23	1.68	
2585.00	15.800	242.000	2526.28	492.96	-251.54	-424.17	1.53	
2676.00	16.400	240.300	2613.71	518.19	-263.72	-446.27	0.84	
2766.00	16.600	244.100	2700.01	543.73	-275.63	-468.87	1.22	
2857.00	15.800	242.000	2787.40	569.10	-287.12	-491.51	1.09	
2948.00	14.600	246.900	2875.21	592.89	-297.44	-513.00	1.93	
3039.00	15.400	252.900	2963.12	616.12	-305.49	-535.10	1.92	
3130.00	16.200	243.800	3050.69	640.62	-314.65	-558.04	2.86	
3220.00	18.100	238.900	3136.69	667.14	-327.42	-581.28	2.65	
3311.00	16.400	238.500	3223.60	694.10	-341.43	-604.34	1.87	
3402.00	17.100	247.600	3310.75	720.23	-353.25	-627.66	2.98	
3493.00	14.100	246.200	3398.39	744.56	-362.82	-650.18	3.32	
3583.00	13.500	234.600	3485.81	765.92	-373.33	-668.78	3.14	
3674.00	12.800	238.200	3574.42	786.55	-384.80	-686.00	1.18	
3765.00	11.300	257.100	3663.45	805.19	-392.10	-703.27	4.61	
3856.00	8.900	260.300	3753.03	820.40	-395.28	-718.90	2.71	
3946.00	9.300	245.900	3841.91	834.21	-399.42	-732.40	2.56	



Actual Wellpath Report

DRY CREEK 22-35 AWP

Page 3 of 5



INTEQ

REFERENCE WELLPATH IDENTIFICATION

Operator	KERR MCGEE OIL & GAS ONSHORE LP	Slot	SLOT#12 DRY CREEK 22-35 (2159'FNL & 2095'FWL)
Area	COLORADO	Well	DRY CREEK 22-35
Field	WELD COUNTY (KERR MCGEE)	Wellbore	DRY CREEK 22-35 AWB
Facility	SEC.35-T1N-R67W		

WELLPATH DATA (81 stations)

MD [ft]	Inclination [°]	Azimuth [°]	TVD [ft]	Vert Sect [ft]	North [ft]	East [ft]	DLS [°/100ft]	Comments
4037.00	7.500	245.500	3931.93	847.46	-404.89	-744.52	1.98	
4128.00	6.600	250.500	4022.24	858.53	-409.10	-754.85	1.20	
4219.00	5.400	224.800	4112.76	867.81	-413.88	-762.80	3.20	
4310.00	3.500	218.800	4203.48	874.49	-419.09	-767.56	2.15	
4400.00	3.600	225.800	4293.31	879.77	-423.20	-771.31	0.49	
4491.00	1.300	233.600	4384.22	883.55	-425.80	-774.19	2.55	
4627.00	1.800	264.200	4520.17	887.04	-426.93	-777.56	0.70	
4763.00	0.700	163.300	4656.15	889.18	-427.94	-779.44	1.51	
4899.00	0.800	249.700	4792.14	890.30	-429.07	-780.09	0.76	
5035.00	0.400	253.600	4928.13	891.70	-429.53	-781.44	0.30	
5171.00	1.000	235.700	5064.12	893.34	-430.34	-782.87	0.46	
5308.00	1.700	249.100	5201.08	896.55	-431.73	-785.76	0.56	
5445.00	1.600	228.700	5338.03	900.43	-433.72	-789.10	0.43	
5581.00	1.000	302.100	5474.00	902.85	-434.34	-791.53	1.20	
5717.00	1.300	285.300	5609.97	904.53	-433.31	-794.02	0.33	
5853.00	1.100	310.900	5745.94	906.08	-432.04	-796.50	0.42	
5989.00	1.000	43.700	5881.93	905.39	-430.33	-796.66	1.12	
6125.00	0.500	11.800	6017.92	903.87	-428.89	-795.72	0.47	
6262.00	1.000	80.000	6154.91	902.35	-428.10	-794.42	0.68	
6398.00	0.600	95.800	6290.89	900.64	-427.97	-792.55	0.33	
6534.00	0.100	73.600	6426.89	899.94	-428.00	-791.72	0.37	
6670.00	1.300	94.000	6562.88	898.54	-428.08	-790.07	0.89	
6806.00	0.600	52.900	6698.86	896.54	-427.76	-787.96	0.69	
6943.00	0.600	314.800	6835.85	896.03	-426.82	-787.90	0.66	
7079.00	1.200	65.900	6971.84	894.81	-425.73	-787.11	1.12	
7215.00	0.800	41.300	7107.82	892.49	-424.44	-785.18	0.43	
7351.00	0.400	0.500	7243.82	891.36	-423.25	-784.55	0.41	
7486.00	0.500	304.200	7378.81	891.40	-422.45	-785.03	0.32	
7623.00	0.300	295.400	7515.81	891.87	-421.96	-785.85	0.15	
7759.00	0.400	242.400	7651.81	892.56	-422.03	-786.59	0.24	
7896.00	0.100	95.400	7788.81	892.93	-422.26	-786.90	0.36	
8032.00	0.300	103.500	7924.81	892.57	-422.35	-786.43	0.15	
8168.00	0.600	134.500	8060.80	892.11	-422.94	-785.58	0.28	
8304.00	0.600	101.700	8196.79	891.37	-423.58	-784.37	0.25	
8372.00	0.100	97.500	8264.79	891.05	-423.66	-783.97	0.74	LAST BHI MWD SURVEY
8422.00	0.100	97.500	8314.79	890.98	-423.67	-783.88	0.00	PROJECTION TO BIT



Actual Wellpath Report

DRY CREEK 22-35 AWP

Page 4 of 5



INTEQ

REFERENCE WELLPATH IDENTIFICATION			
Operator	KERR MCGEE OIL & GAS ONSHORE LP	Slot	SLOT#12 DRY CREEK 22-35 (2159'FNL & 2095'FWL)
Area	COLORADO	Well	DRY CREEK 22-35
Field	WELD COUNTY (KERR MCGEE)	Wellbore	DRY CREEK 22-35 AWB
Facility	SEC.35-T1N-R67W		

HOLE & CASING SECTIONS Ref Wellbore: DRY CREEK 22-35 AWB Ref Wellpath: DRY CREEK 22-35 AWP									
String/Diameter	Start MD [ft]	End MD [ft]	Interval [ft]	Start TVD [ft]	End TVD [ft]	Start N/S [ft]	Start E/W [ft]	End N/S [ft]	End E/W [ft]
12.25in Open Hole	15.00	1191.00	1176.00	15.00	1182.37	0.00	0.00	-64.32	-113.19
8.625in Casing Surface	15.00	1191.00	1176.00	15.00	1182.37	0.00	0.00	-64.32	-113.19
7.875in Open Hole	1191.00	8422.00	7231.00	1182.37	8314.79	-64.32	-113.19	-423.67	-783.88

TARGETS									
Name	MD [ft]	TVD [ft]	North [ft]	East [ft]	Grid East [srv ft]	Grid North [srv ft]	Latitude	Longitude	Shape
DRY CREEK 22-35 GEO TARGET 50' RADIUS (2590'FNL & 1320'FWL, REV-1)		6000.00	-429.85	-773.16	3178590.06	1246315.61	40°00'27.936"N	104°51'44.820"W	circle
DRY CREEK 22-35 HARDLINE 50'S OF GEO TARGET		6000.00	-479.85	-773.16	3178590.42	1246265.61	40°00'27.442"N	104°51'44.820"W	point

WELLPATH COMPOSITION Ref Wellbore: DRY CREEK 22-35 AWB Ref Wellpath: DRY CREEK 22-35 AWP				
Start MD [ft]	End MD [ft]	Positional Uncertainty Model	Log Name/Comment	Wellbore
15.00	1146.00	NaviTrak (Standard)	BHI MWD SURVEYS 12.25 HOLE <151-1146>	DRY CREEK 22-35 AWB
1146.00	8372.00	NaviTrak (Standard)	BHI MWD SURVEYS 7.875 HOLE <1223-8372>	DRY CREEK 22-35 AWB
8372.00	8422.00	Blind Drilling (std)	Projection to bit	DRY CREEK 22-35 AWB



Actual Wellpath Report

DRY CREEK 22-35 AWP

Page 5 of 5



INTEQ

REFERENCE WELLPATH IDENTIFICATION

Operator	KERR MCGEE OIL & GAS ONSHORE LP	Slot	SLOT#12 DRY CREEK 22-35 (2159'FNL & 2095'FWL)
Area	COLORADO	Well	DRY CREEK 22-35
Field	WELD COUNTY (KERR MCGEE)	Wellbore	DRY CREEK 22-35 AWB
Facility	SEC.35-T1N-R67W		

WELLPATH COMMENTS

MD [ft]	Inclination [°]	Azimuth [°]	TVD [ft]	Comment
8372.00	0.100	97.500	8264.79	LAST BHI MWD SURVEY
8422.00	0.100	97.500	8314.79	PROJECTION TO BIT