

T4S, R96W, 6th P.M.

Encana OIL & GAS (USA) INC.

Well location, DW 8603A-33 P28 496 (SURFACE LOCATION), located as shown in the SE 1/4 SE 1/4 of Section 28, T4S, R96W, 6th P.M., Garfield County, Colorado.

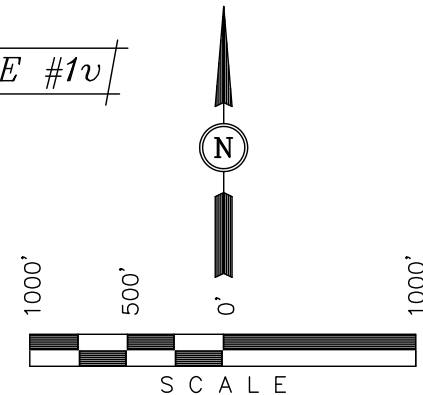
BASIS OF ELEVATION

BENCH MARK (H79) LOCATED IN THE NE 1/4 OF SECTION 35, T4S, R98W, 6th P.M. TAKEN FROM THE BULL FORK QUADRANGLE, COLORADO, 7.5 MINUTE SERIES (TOPO GRAPHICAL MAP) PUBLISHED BY THE UNITED STATES DEPARTMENT OF THE INTERIOR, GEOLOGICAL SURVEY. SAID ELEVATION IS MARKED AS BEING 8535 FEET.

BASIS OF BEARINGS

BASIS OF BEARINGS IS A G.P.S. OBSERVATION.

FIGURE #1v



CERTIFICATE

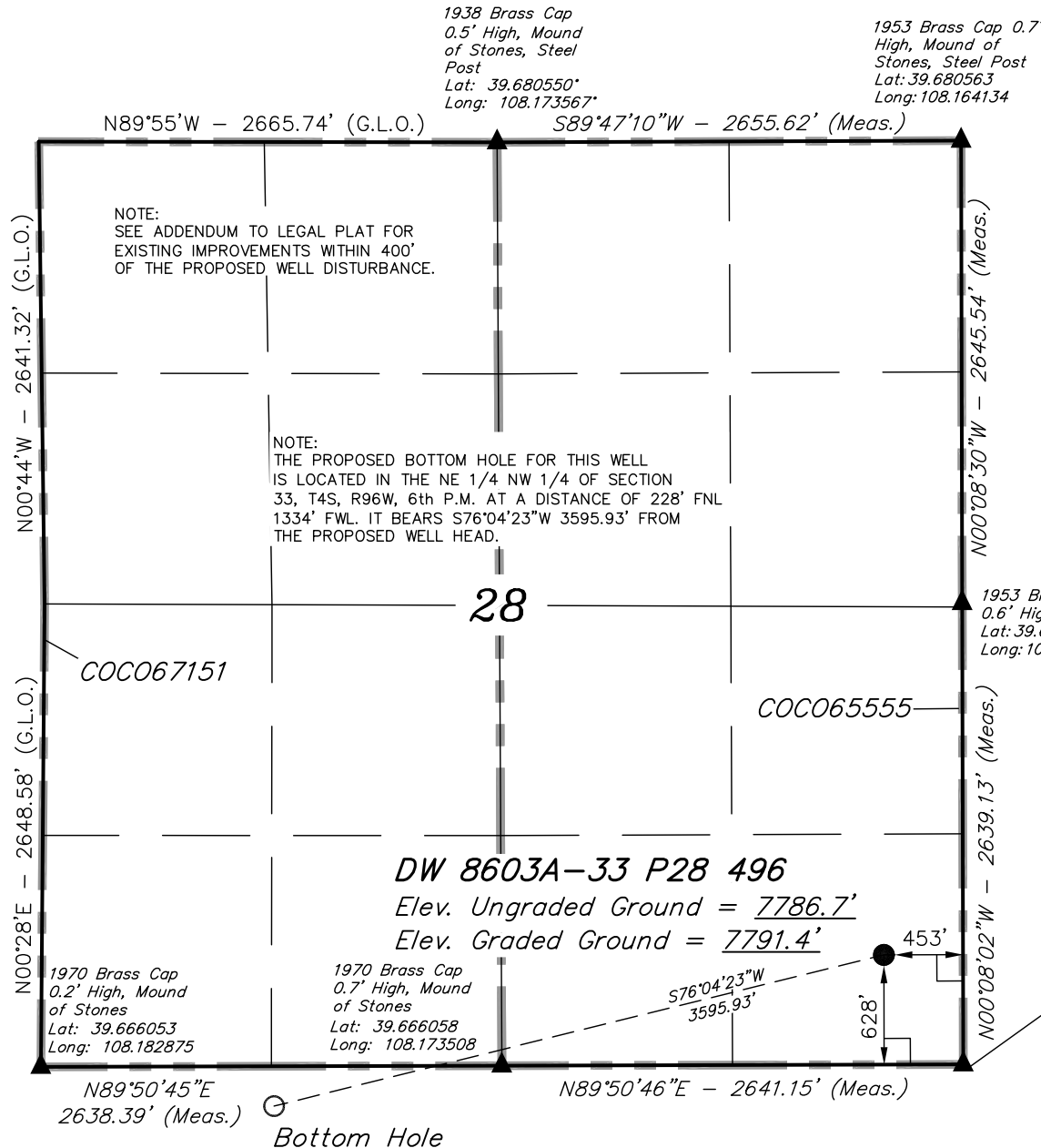
THIS IS TO CERTIFY THAT THE ABOVE PLAT WAS PREPARED FROM FIELD NOTES OF ACTUAL SURVEYS MADE BY ME OR UNDER MY SUPERVISION AND THAT THE SAME ARE TRUE AND CORRECT TO THE BEST OF MY KNOWLEDGE AND BELIEF.

REGISTERED LAND SURVEYOR  
REGISTRATION NO. 17492  
STATE OF COLORADO

REVISED: 01-25-11  
REVISED: 12-13-10

UINTAH ENGINEERING & LAND SURVEYING  
85 SOUTH 200 EAST - VERNAL, UTAH 84078  
(435) 789-1017

SCALE 1" = 1000'	DATE SURVEYED: 09-17-10	DATE DRAWN: 11-16-10
PARTY B.J. B.H. C.H.	REFERENCES G.L.O. PLAT	
WEATHER COOL	FILE Encana OIL & GAS (USA) INC.	



LEGEND:

- └─┘ = 90° SYMBOL
- = PROPOSED WELL HEAD.
- ▲ = SECTION CORNERS LOCATED.

PDOP = 1.8

NAD 83 (SURFACE LOCATION)	
LATITUDE	= 39°40'04.02" (39.667783)
LONGITUDE	= 108°09'56.66" (108.165739)
NAD 27 (SURFACE LOCATION)	
LATITUDE	= 39°40'04.11" (39.667808)
LONGITUDE	= 108°09'54.37" (108.165103)

T4S, R96W, 6th P.M.

DW 8603A-33  
P28 496  
Surface Hole

1953 Brass Cap  
0.9' High, Steel  
Post  
Lat: 39.666061  
Long: 108.164131

Encana OIL & GAS (USA) INC.

Well location, DW 8603A-33 P28 496 (TARGET  
BOTTOM HOLE), located as shown in the NE 1/4  
NW 1/4 of Section 33, T4S, R96W, 6th P.M.,  
Garfield County, Colorado.

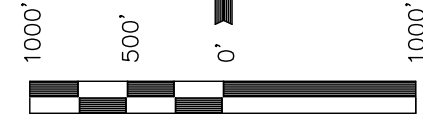
BASIS OF ELEVATION

BENCH MARK (H79) LOCATED IN THE NE 1/4 OF SECTION  
35, T4S, R98W, 6th P.M. TAKEN FROM THE BULL FORK  
QUADRANGLE, COLORADO, 7.5 MINUTE SERIES (TOPO  
GRAPHICAL MAP) PUBLISHED BY THE UNITED STATES  
DEPARTMENT OF THE INTERIOR, GEOLOGICAL SURVEY. SAID  
ELEVATION IS MARKED AS BEING 8535 FEET.

BASIS OF BEARINGS

BASIS OF BEARINGS IS A G.P.S. OBSERVATION.

FIGURE #1w



SCALE

CERTIFICATE

THIS IS TO CERTIFY THAT THE ABOVE PLAT WAS PREPARED FROM  
FIELD NOTES OF ACTUAL SURVEYS MADE BY ME OR UNDER MY  
SUPERVISION AND THAT THE SAME ARE TRUE AND CORRECT TO THE  
BEST OF MY KNOWLEDGE AND BELIEF.

REGISTERED LAND SURVEYOR  
REGISTRATION NO. 17492  
STATE OF COLORADO

REVISED: 01-25-11  
REVISED: 12-13-10

UINTAH ENGINEERING & LAND SURVEYING  
85 SOUTH 200 EAST - VERNAL, UTAH 84078  
(435) 789-1017

SCALE 1" = 1000'	DATE SURVEYED: 09-17-10	DATE DRAWN: 11-16-10
PARTY B.J. B.H. C.H.	REFERENCES G.L.O. PLAT	
WEATHER COOL	FILE Encana OIL & GAS (USA) INC.	

1917 Brass Cap  
Lat: 39.651256  
Long: 108.183561

LINE TABLE		
LINE	BEARING	LENGTH
L1	N89°53'21"E	195.03'
L2	N89°26'45"E	200.90'

LEGEND:

└─┘ = 90° SYMBOL

● = PROPOSED WELL HEAD.

▲ = SECTION CORNERS LOCATED.

NAD 83 (TARGET BOTTOM HOLE)	
LATITUDE	= 39°39'55.54" (39.665428)
LONGITUDE	= 108°10'41.29" (108.178136)
NAD 27 (TARGET BOTTOM HOLE)	
LATITUDE	= 39°39'55.63" (39.665453)
LONGITUDE	= 108°10'39.00" (108.177500)

NOTE:  
THE PROPOSED BOTTOM HOLE BEARS  
S76°04'23"W 3595.93' FROM THE PROPOSED  
WELL HEAD WHICH IS LOCATED IN THE SE 1/4  
SE 1/4 OF SECTION 28, T4S, R96W, 6th P.M.  
AT A DISTANCE OF 628' FSL 453' FEL.

33

COC065556

DW 8603A-33 P28 496  
TARGET BOTTOM HOLE

1970 Brass Cap  
0.7' High, Mound  
of Stones  
Lat: 39.666058  
Long: 108.173508

1970 Brass Cap  
0.2' High, Mound  
of Stones  
Lat: 39.666053  
Long: 108.182875

1970 Brass Cap  
0.4' High, Steel  
Post  
Lat: 39.658528  
Long: 108.272972

Brass Cap, 0.5'  
High, Pile of  
Stones, Steel Post  
Lat: 39.658819  
Long: 108.164128

1970 Brass Cap  
0.3' High, Fence  
Corner  
Lat: 39.651286  
Long: 108.173514

1917 Brass Cap  
0.5' High, Pile of  
Stones, Fence  
Lat: 39.651322  
Long: 108.164839

1953 Brass Cap  
0.2' High, Pile of  
Stones, Fence  
Lat: 39.651322  
Long: 108.164147