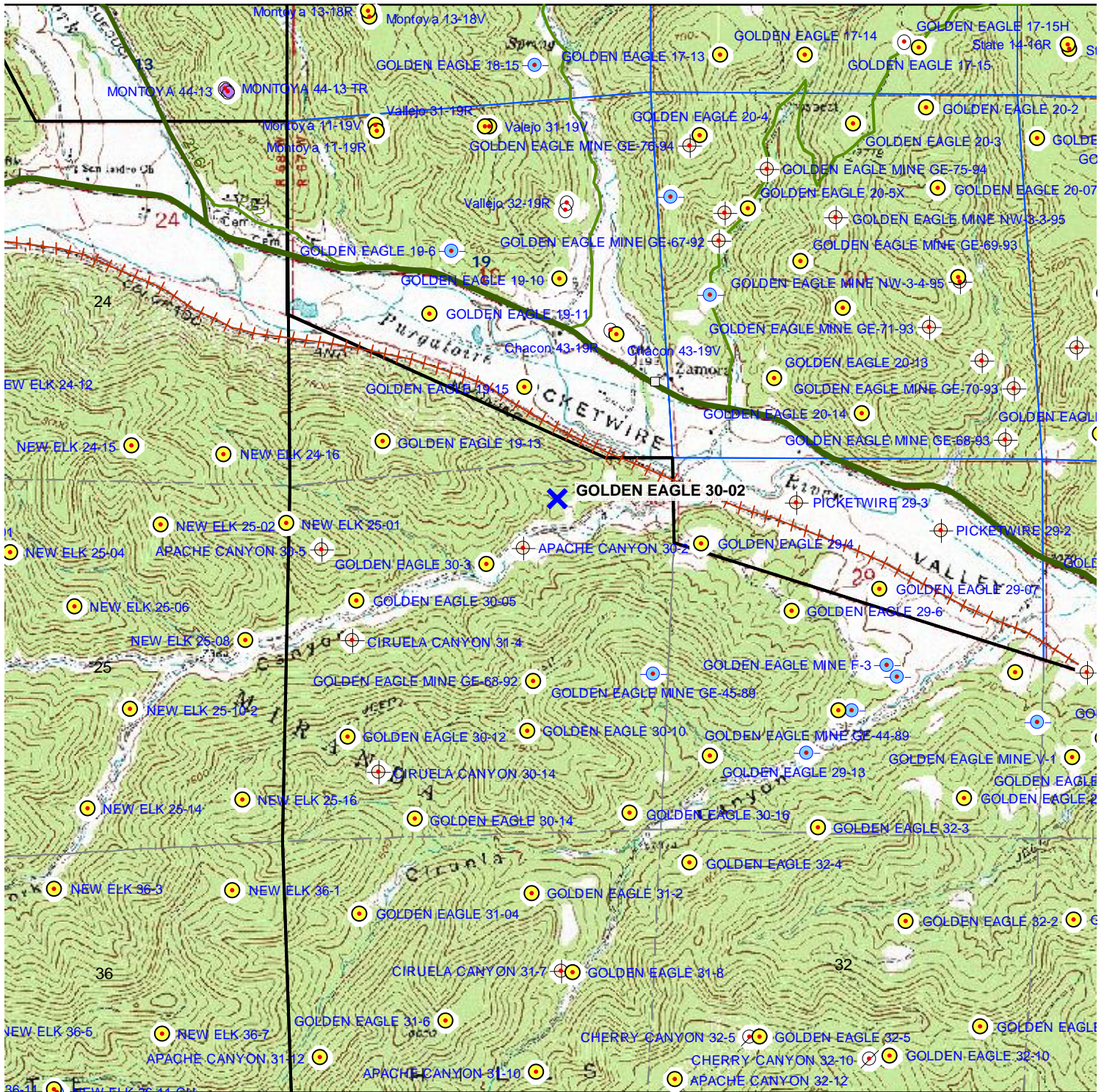


TOPOGRAPHIC MAP



- X Proposed Well
- Producing
- ⊕ Plugged & Abandoned
- ⊗ Abandoned Location
- ⊖ Shut-In
- ◆ Pending Permits
- Permits

GOLDEN EAGLE #30-02
423' FNL & 1,895' FEL
SEC. 30, T33S, R67W, 6th P.M.
LAS ANIMAS COUNTY, CO



Scale 1" = 2,000'