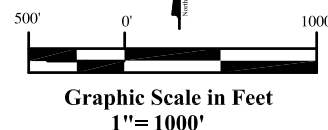
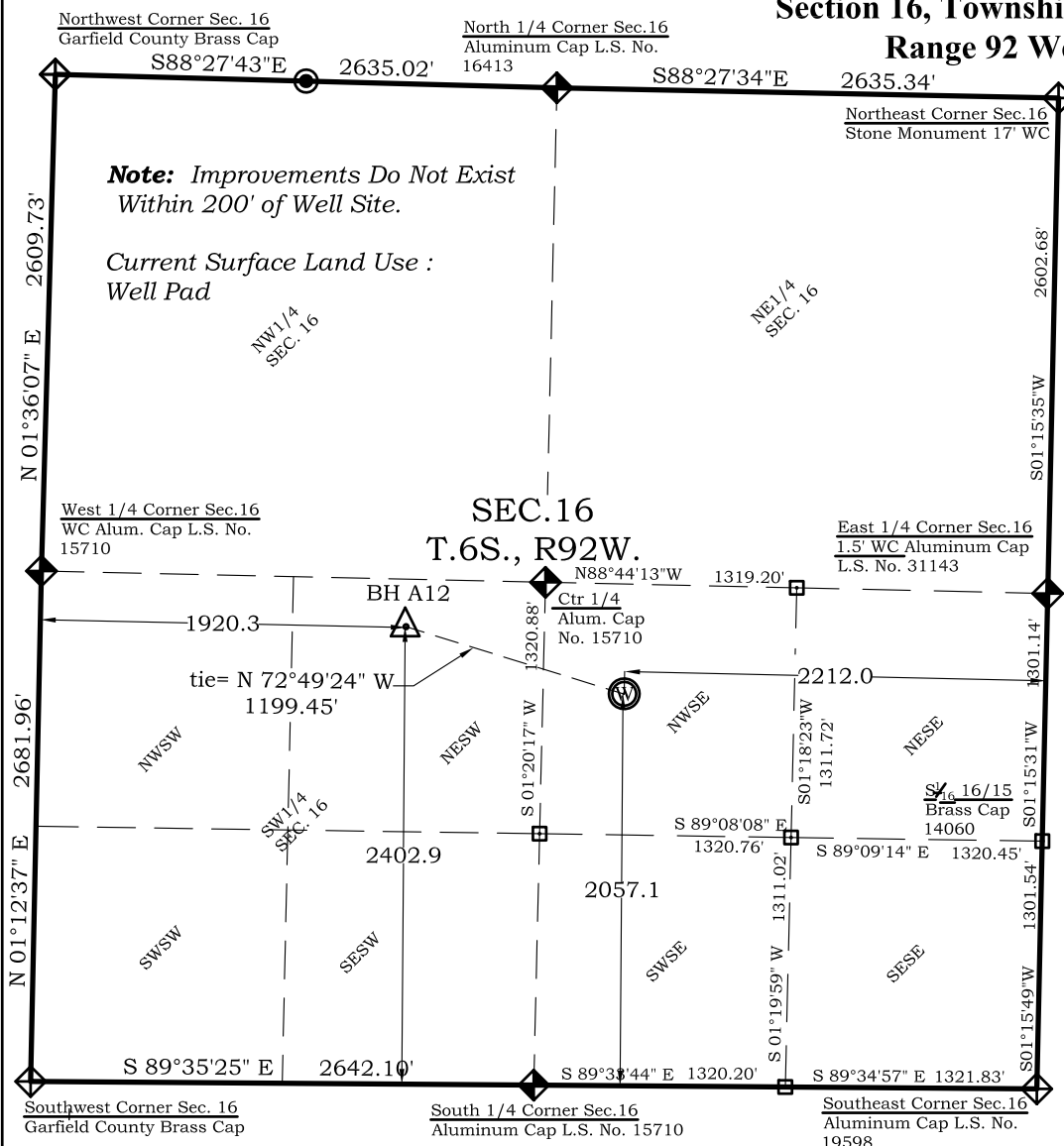


BURCKLE A12

Well Location Plat

Section 16, Township 6 South, Range 92 West



Legend

- ◆ - Field Surveyed Section Corner
- ◆ - Field Surveyed Quarter Corner
- ⊙ - Calculated Section Corner Location
- ⊕ - Field Surveyed 1/6 Corner

Bottom Hole: Burckle A12

2403' FSL
1920' FWL
NAD83
Lat: 39.526154441°N
Long: 107.674415998°W
NAD27
Lat: 39.526173901°N
Long: 107.673800500°W

Surface: Burckle A12

2057' FSL
2212' FEL
Gnd El= 5558.4
Pad El= 5560.0
NAD83
Lat: 39.525276052°N
Long: 107.670319203°W
NAD27
Lat: 39.525295506°N
Long: 107.669703868°W
UTM 13 NORTH
NAD 1983
NORTHING
14365046.617
EASTING
887386.06

Prepared For Antero Resources:
Proposed Burckle A12 Well Situate in The SE1/4 Section
16, Township 6 South, Range 92 West of the 6th. Principal
Meridian, County of Garfield, State of Colorado.

SURVEYOR'S CERTIFICATE

I, SCOTT E. AIBNER, A REGISTERED LAND SURVEYOR, LICENSED UNDER THE LAWS OF THE STATE OF COLORADO DO HEREBY CERTIFY THAT THE SURVEY SHOWN HEREON WAS PREPARED BY RIVER VALLEY SURVEY, INC., FOR ANTERO RESOURCES, BY ME OR UNDER MY DIRECT SUPERVISION AND HAS BEEN STAKED ON THE GROUND AS SHOWN ON THE PLAT AND THAT THIS PLAT IS A TRUE REPRESENTATION THEREOF.

BY: 
SCOTT E. AIBNER, COLORADO REG. NO. 31143

Notes:

1. LATITUDE AND LONGITUDE COORDINATES ARE DIFFERENTIALLY CORRECTED AND BASED ON PUBLISHED NGS CONTROL STATION "WDP-5". SYSTEM: UTM ZONE: 13 NORTH DATUM: NAD 1983 (CONUS)
2. ELEVATIONS ARE BASED ON NAVD OF 1983.
3. ALL BOTTOM AND TOP HOLE LOCATIONS ARE MEASURED 90 DEGREES FROM SECTION LINE.
4. USGS QUADRANGLE MAP "SILT".
5. CURRENT SURFACE LAND USE: WELL PAD SITE.
6. PDOP AT THE TIME OF LOCATION OF SURFACE WELL = 2.6



River Valley Survey, Inc.
110 East 3rd. Street, Suite 213
Rifle, Colorado 81650
Ph: 970-379-7846

Project: BURCKLE A PAD

Field Date: 01-04-11

Date: 01-18-11

Scale: 1"= 1000'

Sheet: 1 of 11

Well Location Plat
Prepared For Antero Resources

Situate In:
NW1/4SE1/4 Section 16, T6S.,
R. 92 W. of the 6th P.M., Garfield
County, Colorado

