
OXY GRAND JUNCTION EBUSINESS

**Shell 797-03-39B
PICEANCE
Garfield County , Colorado**

Cement Surface Casing
07-Dec-2010

Post Job Report

The Road to Excellence Starts with Safety

Sold To #: 344034	Ship To #: 2823770	Quote #:	Sales Order #: 7814872
Customer: OXY GRAND JUNCTION EBUSINESS	Customer Rep: Claussen, Kurt		
Well Name: Shell	Well #: 797-03-39B	API/UWI #:	
Field: PICEANCE	City (SAP): BROWNFIELD	County/Parish: Garfield	State: Colorado
Contractor: H&P Drilling	Rig/Platform Name/Num: M-37		
Job Purpose: Cement Surface Casing			
Well Type: Development Well	Job Type: Cement Surface Casing		
Sales Person: DUNNING, DUSTIN	Srv Supervisor: CALDWELL, JEFFREY	MBU ID Emp #: 369111	

Job Personnel

HES Emp Name	Exp Hrs	Emp #	HES Emp Name	Exp Hrs	Emp #	HES Emp Name	Exp Hrs	Emp #
ANDERSON, ADAM S	7.5	456683	CALDWELL, JEFFREY S	7.5	369111	CUNNINGHAM, TANNER Wade	7.5	445660
MAIN, CHAD R	6.5	335770	WALPOLE, DARREN	7.5	485294			

Equipment

HES Unit #	Distance-1 way	HES Unit #	Distance-1 way	HES Unit #	Distance-1 way	HES Unit #	Distance-1 way
10783493	40 mile	10822007	40 mile	10951249	40 mile	11560046	40 mile
11562538	40 mile						

Job Hours

Date	On Location Hours	Operating Hours	Date	On Location Hours	Operating Hours	Date	On Location Hours	Operating Hours
12-07-10	7.5	1.5						

TOTAL Total is the sum of each column separately

Job

Formation Name	Top	Bottom	Called Out	Date	Time	Time Zone
Formation Depth (MD)			On Location	07 - Dec - 2010	00:00	MST
Form Type		BHST	Job Started	07 - Dec - 2010	05:30	MST
Job depth MD	1055. ft	Job Depth TVD	Job Completed	07 - Dec - 2010	10:12	MST
Water Depth		Wk Ht Above Floor	Departed Loc	07 - Dec - 2010	11:51	MST
Perforation Depth (MD)	From	To			13:00	MST

Well Data

Description	New / Used	Max pressure psig	Size in	ID in	Weight lbm/ft	Thread	Grade	Top MD ft	Bottom MD ft	Top TVD ft	Bottom TVD ft
-------------	------------	-------------------	---------	-------	---------------	--------	-------	-----------	--------------	------------	---------------

Sales/Rental/3rd Party (HES)

Description	Qty	Qty uom	Depth	Supplier
PLUG,CMTG,TOP,9 5/8,HWE,8.16 MIN/9.06 MA	1	EA		
R/A DENSOMETER W/CHART RECORDER,/JOB,ZI	1	JOB		
PORT. DATA ACQUIS. W/OPTICEM RT W/HES	1	EA		
ADC (AUTO DENSITY CTRL) SYS, /JOB,ZI	1	JOB		

Tools and Accessories

Type	Size	Qty	Make	Depth	Type	Size	Qty	Make	Depth	Type	Size	Qty	Make
Guide Shoe					Packer					Top Plug	9.625	1	
Float Shoe					Bridge Plug					Bottom Plug			
Float Collar					Retainer					SSR plug set			
Insert Float										Plug Container	9.625	1	
Stage Tool										Centralizers			

Miscellaneous Materials

Gelling Agt	Conc	Surfactant	Conc	Acid Type	Qty	Conc	%
Treatment Fld	Conc	Inhibitor	Conc	Sand Type	Size	Qty	

Fluid Data									
Stage/Plug #: 1									
Fluid #	Stage Type	Fluid Name	Qty	Qty uom	Mixing Density lbm/gal	Yield ft ³ /sk	Mix Fluid Gal/sk	Rate bbl/min	Total Mix Fluid Gal/sk
1	Water Spacer		10	bbl	8.33	.0	.0	5.0	
2	Gel Water Spacer		20	bbl	.	.0	.0	5.0	
3	Water Spacer		10	bbl	.	.0	.0	5.0	
4	Lead Cement	VERSACEM (TM) SYSTEM (452010)	146	sacks	12.3	2.38	13.76	5.0	13.76
		13.76 Gal	FRESH WATER						
5	Tail Cement	SWIFTCEM (TM) SYSTEM (452990)	87	sacks	14.2	1.43	6.85	5.0	6.85
		6.85 Gal	FRESH WATER						
6	Displacement		76.3	bbl	.	.0	.0	5.0	
Calculated Values		Pressures		Volumes					
Displacement	76.3	Shut In: Instant		Lost Returns	0	Cement Slurry	84.1	Pad	
Top Of Cement	surface	5 Min		Cement Returns	16	Actual Displacement	76.3	Treatment	
Frac Gradient		15 Min		Spacers	40	Load and Breakdown		Total Job	200
Rates									
Circulating	7	Mixing	5	Displacement	5	Avg. Job	5		
Cement Left In Pipe	Amount	45.24 ft	Reason	Shoe Joint					
Frac Ring # 1 @	ID	Frac ring # 2 @	ID	Frac Ring # 3 @	ID	Frac Ring # 4 @	ID		
The Information Stated Herein Is Correct				Customer Representative Signature					

The Road to Excellence Starts with Safety

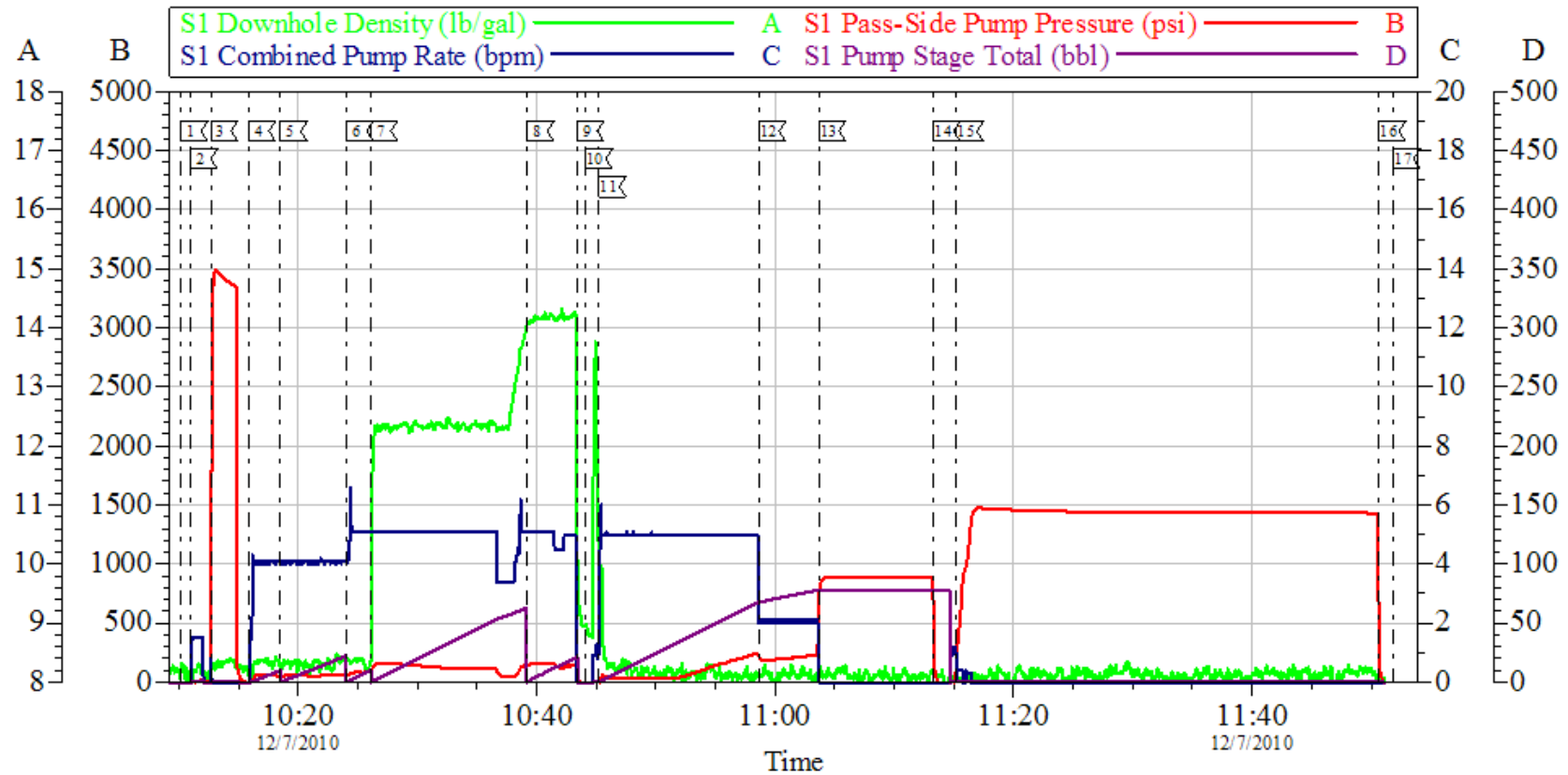
Sold To #: 344034	Ship To #: 2823770	Quote #:	Sales Order #: 7814872
Customer: OXY GRAND JUNCTION EBUSINESS		Customer Rep: Claussen, Kurt	
Well Name: Shell		Well #: 797-03-39B	API/UWI #:
Field: PICEANCE	City (SAP): BROWNFIELD	County/Parish: Garfield	State: Colorado
Legal Description:			
Lat: N 0 deg. OR N 0 deg. 0 min. 0 secs.		Long: E 0 deg. OR E 0 deg. 0 min. 0 secs.	
Contractor: H&P Drilling		Rig/Platform Name/Num: M-37	
Job Purpose: Cement Surface Casing			Ticket Amount:
Well Type: Development Well		Job Type: Cement Surface Casing	
Sales Person: DUNNING, DUSTIN		Srv Supervisor: CALDWELL, JEFFREY	
MBU ID Emp #: 369111			

Activity Description	Date/Time	Cht #	Rate bbl/min	Volume bbl		Pressure psig		Comments
				Stage	Total	Tubing	Casing	
Call Out	12/07/2010 00:00							ELITE #5
Pre-Convoy Safety Meeting	12/07/2010 02:30							ALL PERSONNEL ASSOCIATED WITH JOB ATTENDED.
Crew Leave Yard	12/07/2010 03:00							
Safety Meeting	12/07/2010 04:52							ALL PERSONNEL ASSOCIATED WITH JOB ATTENDED.
Arrive At Loc	12/07/2010 05:30							CASING WAS STILL BEING RUN.
Rig-Up Equipment	12/07/2010 08:30							
Pre-Job Safety Meeting	12/07/2010 09:45							ALL PERSONNEL ASSOCIATED WITH JOB ATTENDED.
Start Job	12/07/2010 10:12							TD:1055', TP:1032', SJ:45.24', MUD:9.6 PPG, 12 1/4" OH.
Prime Pumps	12/07/2010 10:13							H2O
Test Lines	12/07/2010 10:14							TEST GOOD
Pump Spacer 1	12/07/2010 10:17							H2O
Pump Spacer 2	12/07/2010 10:20							GELLED SPACER. 5 GALLONS OG LGC.
Pump Spacer 1	12/07/2010 10:28							H2O
Pump Lead Cement	12/07/2010 10:28							146 SKS 12.3 PPG 2.38 CUFT/SAK 13.76 GAL/SAK

Activity Description	Date/Time	Cht #	Rate bbl/ min	Volume bbl		Pressure psig		Comments
				Stage	Total	Tubing	Casing	
Pump Tail Cement	12/07/2010 10:41							87 SKS 14.2 PPG 1.43 CUFT/SAK 6.85 GAL/SAK
Shutdown	12/07/2010 10:45							
Drop Top Plug	12/07/2010 10:47							PLUG AWAY
Pump Displacement	12/07/2010 10:47							H2O
Slow Rate	12/07/2010 11:00							
Bump Plug	12/07/2010 11:05							PLUG BUMPED
Check Floats	12/07/2010 11:15							FLOATS HELD, 1/2 BBL BACK. GOOD CIRCULATION THROUGH OUT JOB.
Other	12/07/2010 11:16							HOLD 1500 PSI ON CASING.
End Job	12/07/2010 11:51							16 BBLS OF CEMENT TO SURFACE.
Post-Job Safety Meeting (Pre Rig-Down)	12/07/2010 11:55							ALL PERSONNEL ASSOCIATED WITH JOB ATTENDED.
Rig-Down Equipment	12/07/2010 12:00							
Crew Leave Location	12/07/2010 13:00							THANK YOU FOR CHOOSING HALLIBURTON, JEFF CALDWELL AND CREW.

OXY

Shell 797-03-39B Surface



Local Event Log								
1	Start job	10:10:10	2	Prime Lines	10:10:58	3	Test Lines	10:12:41
4	Pump H2O Spacer	10:15:51	5	Pump Gelled Spacer	10:18:31	6	Pump H2O Spacer	10:24:03
7	Pump Lead Cement	10:26:06	8	Pump Tail Cement	10:39:12	9	Shut Down	10:43:23
10	Drop Top Plug	10:44:07	11	Pump Displacement	10:45:14	12	Slow Rate	10:58:39
13	Bump Plug	11:03:40	14	Check Floats	11:13:17	15	Casing Test	11:15:14
16	Release Pressure	11:50:39	17	End Job	11:51:52			

Customer: Oxy
Well Description: Shell 797-03-39B
Company Rep: Curt Claussen

Job Date: 07-Dec-2010
Job Type: Surface
Cement Supervisor: Jeff Caldwell

Sales Order #: 7814872
ADC Used: Yes
Elite #: 5/Adam Anderson

OptiCem v6.4.2
07-Dec-10 12:11