

OXY GRAND JUNCTION EBUSINESS
DO NOT MAIL
BROWNFIELD, Texas

SHELL 697-34-16B

NABORS Drilling/M/37

Post Job Summary **Cement Surface Casing**

Prepared for: ROY KIMBEL
Date Prepared: 10/17/10

Version: 1

Service Supervisor: JAMISON, PRICE

Submitted by:

HALLIBURTON

The Road to Excellence Starts with Safety

Sold To #: 344034		Ship To #: 2813576		Quote #:		Sales Order #: 7703102	
Customer: OXY GRAND JUNCTION EBUSINESS				Customer Rep: KIMBEL, ROY			
Well Name: SHELL			Well #: 697-34-16B			API/UWI #: 05-045-17884	
Field: GRAND VALLEY		City (SAP): PARACHUTE		County/Parish: Garfield		State: Colorado	
Lat: N 39.475 deg. OR N 39 deg. 28 min. 31.451 secs.				Long: W 108.202 deg. OR W -109 deg. 47 min. 52.861 secs.			
Contractor: H&P Drilling			Rig/Platform Name/Num: M 37				
Job Purpose: Cement Surface Casing							
Well Type: Development Well			Job Type: Cement Surface Casing				
Sales Person: DUNNING, DUSTIN			Srvc Supervisor: JAMISON, PRICE			MBU ID Emp #: 229155	

Job Personnel

HES Emp Name	Exp Hrs	Emp #	HES Emp Name	Exp Hrs	Emp #	HES Emp Name	Exp Hrs	Emp #
ARNOLD, EDWARD John	6.5	439784	BANKS, BRENT A	6.5	371353	COSTELDIA, BROCK	6.5	476115
JAMISON, PRICE W	6.5	229155						

Equipment

HES Unit #	Distance-1 way	HES Unit #	Distance-1 way	HES Unit #	Distance-1 way	HES Unit #	Distance-1 way
10000394	120 mile	10551730C	120 mile	10722398	120 mile	10973571	120 mile
11139330	120 mile	11259881	120 mile				

Job Hours

Date	On Location Hours	Operating Hours	Date	On Location Hours	Operating Hours	Date	On Location Hours	Operating Hours
10/16/10	1	0	10/17/10	5.5	1.5			
TOTAL			Total is the sum of each column separately					

Job

Formation Name	Formation Depth (MD)	Top	Bottom	Form Type	Job depth MD	Job Depth TVD	Water Depth	Perforation Depth (MD)	From	To	Deparated Loc
				BHST	1307. ft	1330. ft					

Well Data

Description	New / Used	Max pressure psig	Size in	ID in	Weight lbm/ft	Thread	Grade	Top MD ft	Bottom MD ft	Top TVD ft	Bottom TVD ft
OPEN HOLE				12.25				.	1330.	.	1330.
SURFACE CASING	Unknown		9.625	8.921	36.		J-55	.	1307.	.	1307.

Sales/Rental/3rd Party (HES)

Description	Qty	Qty uom	Depth	Supplier
PLUG,CMTG,TOP,9 5/8,HWE,8.16 MIN/9.06 MA	1	EA		
R/A DENSOMETER W/CHART RECORDER,/JOB,ZI	1	JOB		
PORT. DATA ACQUIS. W/OPTICEM RT W/HES	1	EA		
ADC (AUTO DENSITY CTRL) SYS, /JOB,ZI	1	JOB		

Tools and Accessories

Type	Size	Qty	Make	Depth	Type	Size	Qty	Make	Depth	Type	Size	Qty	Make
Guide Shoe					Packer					Top Plug			
Float Shoe					Bridge Plug					Bottom Plug			
Float Collar					Retainer					SSR plug set			
Insert Float										Plug Container			
Stage Tool										Centralizers			

Miscellaneous Materials

Gelling Agt	Conc	Surfactant	Conc	Acid Type	Qty	Conc	%
Treatment Fld	Conc	Inhibitor	Conc	Sand Type	Size	Qty	

Fluid Data										
Stage/Plug #: 1										
Fluid #	Stage Type	Fluid Name	Qty	Qty uom	Mixing Density lbm/gal	Yield ft ³ /sk	Mix Fluid Gal/sk	Rate bbl/min	Total Mix Fluid Gal/sk	
1	Water Spacer		10.00	bbl	8.4	.0	.0	5.0		
2	SUPER FLUSH - XLC	SUPERFLUSH-XLC - SBM (549694)	20.00	bbl	8.7	.0	.0	5.0		
3	Water Spacer		10.00	bbl	8.4	.0	.0	5.0		
4	LEAD CEMENT	VERSACEM (TM) SYSTEM (452010)	215.0	sacks	12.3	2.33	12.62	5.0	12.62	
12.62 Gal		FRESH WATER								
5	TAIL CEMENT	SWIFTCEM (TM) SYSTEM (452990)	94.0	sacks	14.2	1.43	6.88	5.0	6.72	
6.715 Gal		FRESH WATER								
6	Displacement		97.7	bbl	8.4	.0	.0	5.0		
Calculated Values		Pressures		Volumes						
Displacement	97.7	Shut In: Instant		Lost Returns	NO	Cement Slurry	115	Pad		
Top Of Cement	SURFACE	5 Min		Cement Returns	42	Actual Displacement	97	Treatment		
Frac Gradient		15 Min		Spacers	40	Load and Breakdown		Total Job	253	
Rates										
Circulating	4	Mixing	5	Displacement	5	Avg. Job	5			
Cement Left In Pipe	Amount	43.5 ft	Reason	Shoe Joint						
Frac Ring # 1 @	ID	Frac ring # 2 @	ID	Frac Ring # 3 @	ID	Frac Ring # 4 @	ID			
The Information Stated Herein Is Correct				Customer Representative Signature						

The Road to Excellence Starts with Safety

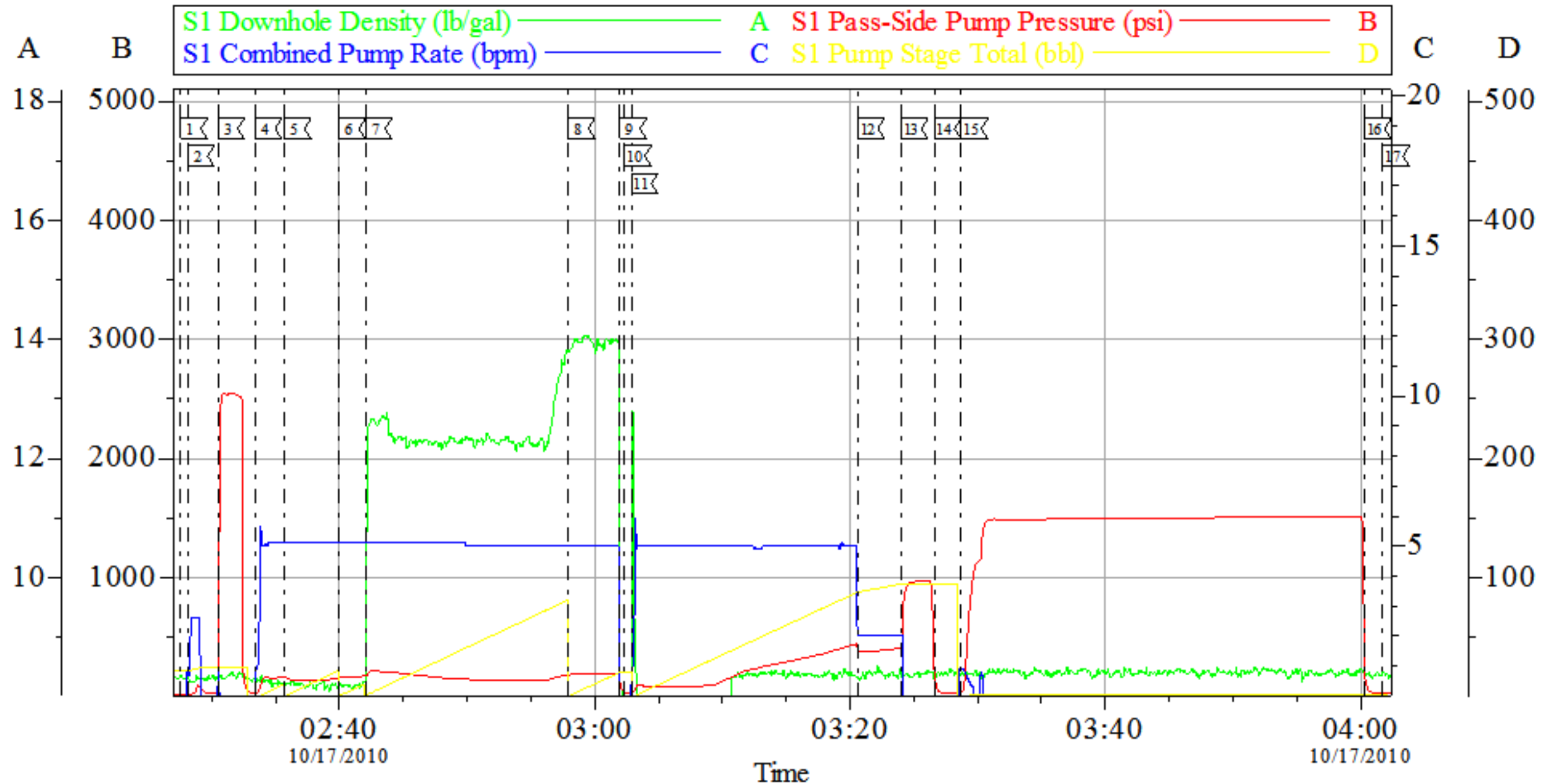
Sold To #: 344034		Ship To #: 2813576		Quote #:		Sales Order #: 7703102	
Customer: OXY GRAND JUNCTION EBUSINESS				Customer Rep: KIMBEL, ROY			
Well Name: SHELL			Well #: 697-34-16B			API/UWI #: 05-045-17884	
Field: GRAND VALLEY		City (SAP): PARACHUTE		County/Parish: Garfield		State: Colorado	
Legal Description:							
Lat: N 39.475 deg. OR N 39 deg. 28 min. 31.451 secs.				Long: W 108.202 deg. OR W -109 deg. 47 min. 52.861 secs.			
Contractor: H&P Drilling			Rig/Platform Name/Num: M 37				
Job Purpose: Cement Surface Casing						Ticket Amount:	
Well Type: Development Well			Job Type: Cement Surface Casing				
Sales Person: DUNNING, DUSTIN			Srv Supervisor: JAMISON, PRICE			MBU ID Emp #: 229155	

Activity Description	Date/Time	Cht #	Rate bbl/ min	Volume bbl		Pressure psig		Comments
				Stage	Total	Tubing	Casing	
Call Out	10/16/2010 19:00							TD 1330 HOLE SIZE 12.25 TP 1309 SHOE JOINT 43.46 CASING 9.625 36 PPF GRADE J-55 MUD 9.1 PPG
Depart Yard Safety Meeting	10/16/2010 21:15							
Crew Leave Yard	10/16/2010 21:30							
Arrive At Loc	10/16/2010 23:00							
Assessment Of Location Safety Meeting	10/16/2010 23:30							
Wait on Customer or Customer Sub-Contractor Equip	10/16/2010 23:35							RUNNING CASING AND CIRCULATING
Wait on Customer or Customer Sub-Contractor Equipm	10/17/2010 01:00							
Pre-Rig Up Safety Meeting	10/17/2010 01:20							
Pre-Job Safety Meeting	10/17/2010 02:00							
Start Job	10/17/2010 02:27							
Prime Pumps	10/17/2010 02:28		2	2			85.0	FRESH WATER
Test Lines	10/17/2010 02:30						2000. 0	
Pump Spacer 1	10/17/2010 02:33		5	10			161.0	FRESH WATER
Pump Spacer 2	10/17/2010 02:35		5	20			138.0	GEL FLUSH
Pump Spacer 1	10/17/2010 02:39		5	10			160.0	FRESH WATER

Activity Description	Date/Time	Cht #	Rate bbl/min	Volume bbl		Pressure psig		Comments
				Stage	Total	Tubing	Casing	
Pump Lead Cement	10/17/2010 02:42		5	91.1			150.0	MIXED @ 12.3 YIELD 2.38 WAT/REQ 13.77 215 SKS
Pump Tail Cement	10/17/2010 02:57		5	24			182.0	MIXED @ 14.2 PPG YIELD 1.43 WAT/REQ 6..85 94 SKS
Shutdown	10/17/2010 03:01							
Drop Plug	10/17/2010 03:03							
Pump Displacement	10/17/2010 03:03		5					FRESH WATER
Slow Rate	10/17/2010 03:20		2	81			430.0	
Bump Plug	10/17/2010 03:24		2	91			420.0	PRESSURED UP TO 964 PSI
Check Floats	10/17/2010 03:26							FLOATS HELD
Pressure Test	10/17/2010 03:28						1500.0	PRESSURE TEST CASING WATCH PSI FOR 30 MIN
Release Casing Pressure	10/17/2010 04:00							
End Job	10/17/2010 04:01							CEMENT BACK TO SURFACE 42 BBLS
Post-Job Safety Meeting (Pre Rig-Down)	10/17/2010 04:30							GOOD CIRCULATION THROUGHOUT JOB
Depart Location Safety Meeting	10/17/2010 05:20							CASING WAS NOT MOVED THROUGHOUT JOB
Crew Leave Location	10/17/2010 05:30							THANKS FOR USING HALLIBURTON BILL JAMISON & CREW

OXY

9.625 SURFACE CASING



Local Event Log					
1	START JOB	02:27:35	2	PRIME LINES	02:28:06
3	TEST LINES	02:30:29	4	START FRESH WATER SPACER	02:33:25
5	START GEL SPACER	02:35:42	6	START FRESH WATER SPACER	02:39:57
7	START LEAD CEMENT	02:42:01	8	START TAIL CEMENT	02:57:56
9	SHUT DOWN	03:01:59	10	DROP PLUG	03:02:22
11	START DISPLACEMENT	03:02:53	12	SLOW RATE	03:20:38
13	BUMP PLUG	03:24:01	14	CHECK FLOATS	03:26:38
15	PRESSURE TEST CASING	03:28:43	16	RELEASE PRESSURE	04:00:19
17	END JOB	04:01:45			

Customer: OXY
Well Description: SHELL 697-34-16B
Company Rep: ROY KIMBEL

Job Date: 17-Oct-2010
Job Type: CEMENT
Cement Supervisor: BILL JAMISON

Sales Order #: 7703102
ADC Used: YES
Elite #: 2 BRENT BANKS

HALLIBURTON
OptiCem v6.3.4
17-Oct-10 04:19