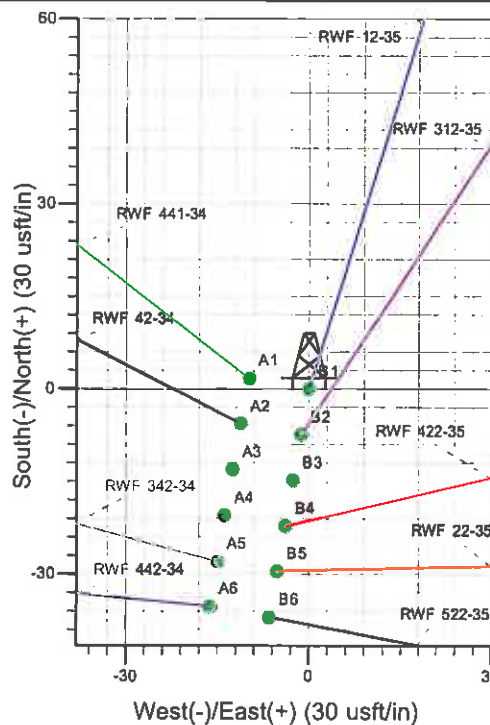
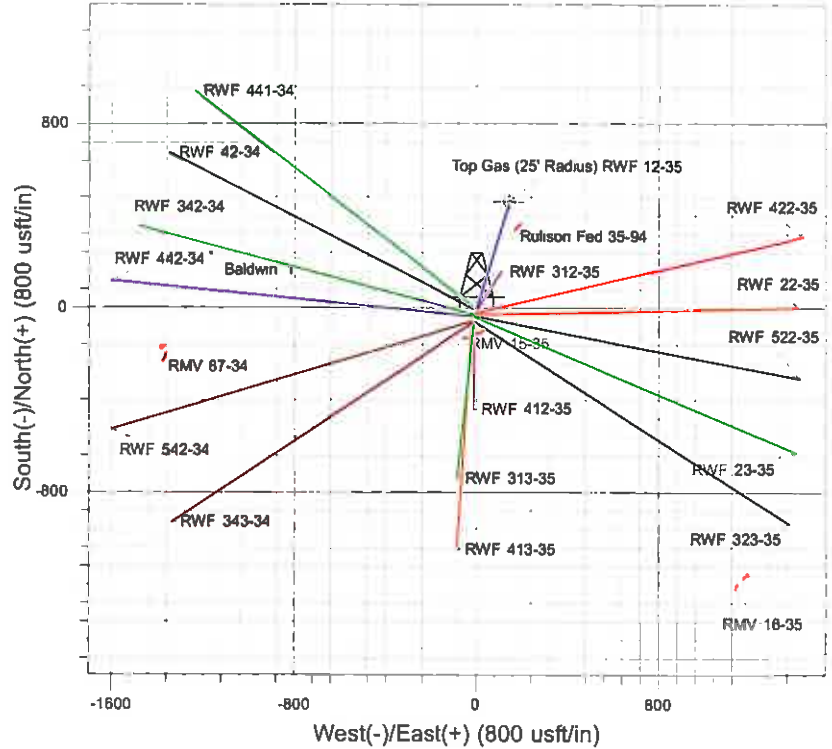
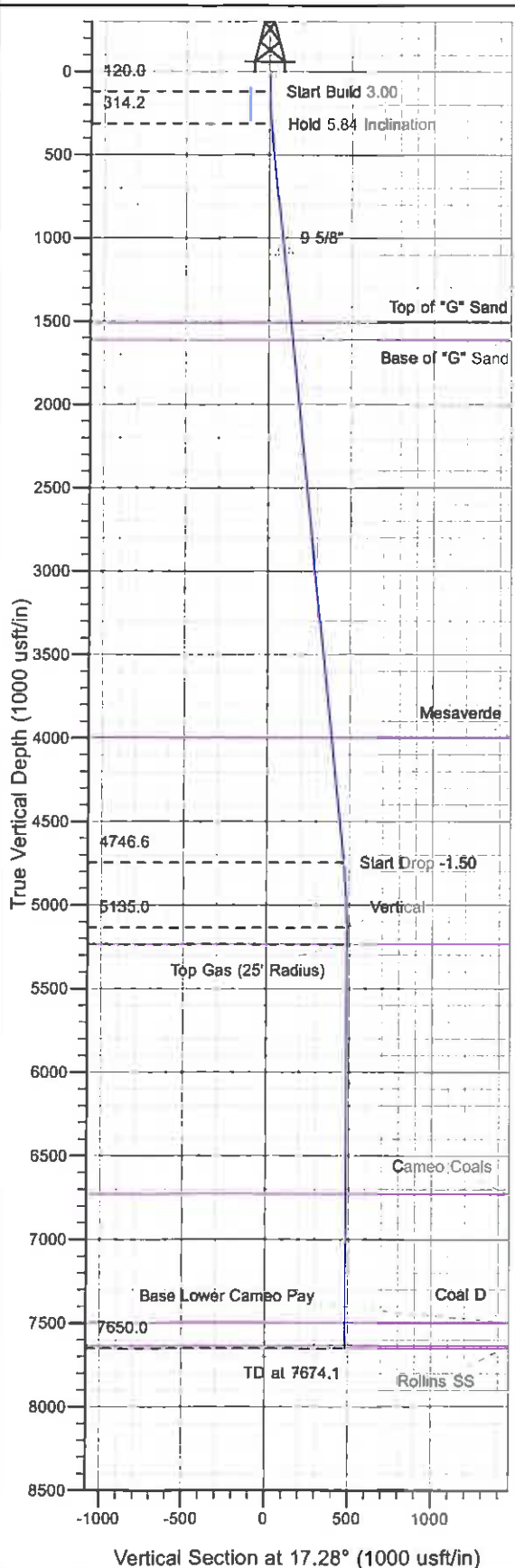




Well Name: RWF 12-35
 Surface Location: RMV 15-35 Pad
 North American Datum 1983 , US State Plane 1983 , Colorado Central Zone
 Ground Elevation: 5550.0
 +N/-S +E/-W Northing Easting Latitude Longitude Slot
 0.0 0.0 1609666.40 2333156.50 39° 29' 0.599 N 107° 51' 46.297 W B1
 KELLY BUSHING @ 5574.0usft (H&P 271 (24') kjs)



Project: RU 35-06S-094W
 Site: RMV 15-35 Pad
 Well: RWF 12-35
 Plan #2 17Dec10 kjs

M Azimuths to True North
 Magnetic North: 10.69°
 Magnetic Field
 Strength: 52609.6nT
 Dip Angle: 65.85°
 Date: 4/2/2008
 Model: IGRF2005-10

ANNOTATIONS

| TVD | MD | Inc | Azi | +N/-S | +E/-W | VSec | Departure | Annotation |
|--------|--------|------|-------|-------|-------|-------|-----------|-----------------------|
| 120.0 | 120.0 | 0.00 | 0.00 | 0.0 | 0.0 | 0.0 | 0.0 | Start Build 3.00 |
| 314.2 | 314.5 | 5.84 | 17.28 | 9.4 | 2.9 | 9.9 | 9.9 | Hold 5.84 Inclination |
| 4746.6 | 4770.1 | 5.84 | 17.28 | 442.0 | 137.5 | 462.9 | 462.9 | Start Drop -1.50 |
| 5135.0 | 5159.1 | 0.00 | 0.00 | 460.9 | 143.4 | 482.7 | 482.7 | Vertical |
| 5235.0 | 5259.1 | 0.00 | 0.00 | 460.9 | 143.4 | 482.7 | 482.7 | Top Gas |
| 7650.0 | 7674.1 | 0.00 | 0.00 | 460.9 | 143.4 | 482.7 | 482.7 | TD at 7674.1 |

PICEANCE VLY NAD 83

RU 35-06S-094W

RMV 15-35 Pad

RWF 12-35 - Slot B1

Wellbore #1

Plan: Plan #2 17Dec10 kjs

Standard Planning Report - Geographic

08 February, 2011

Williams
Planning Report - Geographic

| | | | |
|-----------|------------------------|------------------------------|--|
| Database: | Compass R5000 WIN AUTH | Local Co-ordinate Reference: | Well RWF 12-35 - Slot B1 |
| Company: | PICEANCE VLY NAD 83 | TVD Reference: | KELLY BUSHING @ 5574.0usft (H&P 271 (24') kjs) |
| Project: | RU 35-06S-094W | MD Reference: | KELLY BUSHING @ 5574.0usft (H&P 271 (24') kjs) |
| Site: | RMV 15-35 Pad | North Reference: | True |
| Well: | RWF 12-35 | Survey Calculation Method: | Minimum Curvature |
| Wellbore: | Wellbore #1 | | |
| Design: | Plan #2 17Dec10 kjs | | |

| | | | |
|-------------|-------------------------------------|---------------|-----------------------------|
| Project | RU 35-06S-094W, Garfield County, CO | | |
| Map System: | US State Plane 1983 | System Datum: | Mean Sea Level |
| Geo Datum: | North American Datum 1983 | | |
| Map Zone: | Colorado Central Zone | | Using geodetic scale factor |

| | | | | | |
|-----------------------|----------|---------------|-------------------|-------------------|-------------------|
| Site | | RMV 15-35 Pad | | | |
| Site Position: | | Northing: | 1,609,578.20 usft | Latitude: | 39° 28' 59.723 N |
| From: | Map | Easting: | 2,333,138.00 usft | Longitude: | 107° 51' 46.503 W |
| Position Uncertainty: | 0.0 usft | Slot Radius: | 13.200 in | Grid Convergence: | -1.490 ° |

| | | | | | | |
|----------------------|---------------------|----------|---------------------|-------------------|---------------|-------------------|
| Well | RWF 12-35 - Slot B1 | | | | | |
| Well Position | +N/-S | 0.0 usft | Northing: | 1,609,666.40 usft | Latitude: | 39° 29' 0.599 N |
| | +E/-W | 0.0 usft | Easting: | 2,333,156.50 usft | Longitude: | 107° 51' 46.297 W |
| Position Uncertainty | | 0.0 usft | Wellhead Elevation: | | Ground Level: | 5,550.0 usft |

| | | | | | |
|-----------|-------------|-------------|--------------------|------------------|------------------------|
| Wellbore | Wellbore #1 | | | | |
| Magnetics | Model Name | Sample Date | Declination (°) | Dip Angle (°) | Field Strength (nT) |
| | IGRF2005-10 | 4/2/2008 | 10.685 | 65.849 | 52,610 |

| | | | | |
|-------------------|-------------------------|--------------|---------------|---------------|
| Design | Plan #2 17Dec10 kjs | | | |
| Audit Notes: | | | | |
| Version: | Phase: | PLAN | Tie On Depth: | 0.0 |
| Vertical Section: | Depth From (TVD) (usft) | +N/-S (usft) | +E/-W (usft) | Direction (°) |
| | 0.0 | 0.0 | 0.0 | 17.28 |

| Plan Sections | | | | | | | | | | |
|-----------------------|-----------------|-------------|-----------------------|--------------|--------------|-------------------------|------------------------|-----------------------|---------|----------------------|
| Measured Depth (usft) | Inclination (°) | Azimuth (°) | Vertical Depth (usft) | +N/-S (usft) | +E/-W (usft) | Dogleg Rate (°/100usft) | Build Rate (°/100usft) | Turn Rate (°/100usft) | TFO (°) | Target |
| 0.0 | 0.00 | 0.00 | 0.0 | 0.0 | 0.0 | 0.00 | 0.00 | 0.00 | 0.000 | |
| 120.0 | 0.00 | 0.00 | 120.0 | 0.0 | 0.0 | 0.00 | 0.00 | 0.00 | 0.000 | |
| 314.5 | 5.84 | 17.28 | 314.2 | 9.4 | 2.9 | 3.00 | 3.00 | 0.00 | 17.279 | |
| 4,770.1 | 5.84 | 17.28 | 4,746.6 | 442.0 | 137.5 | 0.00 | 0.00 | 0.00 | 0.000 | |
| 5,159.1 | 0.00 | 0.00 | 5,135.0 | 460.9 | 143.4 | 1.50 | -1.50 | 0.00 | 180.000 | |
| 5,259.1 | 0.00 | 0.00 | 5,235.0 | 460.9 | 143.4 | 0.00 | 0.00 | 0.00 | 0.000 | Top Gas (25' Radius) |
| 7,674.1 | 0.00 | 0.00 | 7,650.0 | 460.9 | 143.4 | 0.00 | 0.00 | 0.00 | 0.000 | |

Williams
Planning Report - Geographic

| | | | |
|------------------|------------------------|-------------------------------------|--|
| Database: | Compass R5000 WIN AUTH | Local Co-ordinate Reference: | Well RWF 12-35 - Slot B1 |
| Company: | PICEANCE VLY NAD 83 | TVD Reference: | KELLY BUSHING @ 5574.0usft (H&P 271 (24') kjs) |
| Project: | RU 35-06S-094W | MD Reference: | KELLY BUSHING @ 5574.0usft (H&P 271 (24') kjs) |
| Site: | RMV 15-35 Pad | North Reference: | True |
| Well: | RWF 12-35 | Survey Calculation Method: | Minimum Curvature |
| Wellbore: | Wellbore #1 | | |
| Design: | Plan #2 17Dec10 kjs | | |

| Planned Survey | | | | | | | | | |
|----------------------------------|-----------------|-------------|-----------------------|--------------|--------------|---------------------|--------------------|-----------------|-------------------|
| Measured Depth (usft) | Inclination (") | Azimuth (") | Vertical Depth (usft) | +N/-S (usft) | +E/-W (usft) | Map Northing (usft) | Map Easting (usft) | Latitude | Longitude |
| 0.0 | 0.00 | 0.00 | 0.0 | 0.0 | 0.0 | 1,609,666.40 | 2,333,156.50 | 39° 29' 0.599 N | 107° 51' 46.297 W |
| 120.0 | 0.00 | 0.00 | 120.0 | 0.0 | 0.0 | 1,609,666.40 | 2,333,156.50 | 39° 29' 0.599 N | 107° 51' 46.297 W |
| Start Build 3.00 | | | | | | | | | |
| 314.5 | 5.84 | 17.28 | 314.2 | 9.4 | 2.9 | 1,609,675.77 | 2,333,159.69 | 39° 29' 0.693 N | 107° 51' 46.259 W |
| Hold 5.84 Inclination | | | | | | | | | |
| 1,104.4 | 5.84 | 17.28 | 1,100.0 | 86.1 | 26.8 | 1,609,751.80 | 2,333,185.53 | 39° 29' 1.451 N | 107° 51' 45.955 W |
| 9 5/8" | | | | | | | | | |
| 1,516.6 | 5.84 | 17.28 | 1,510.0 | 126.1 | 39.2 | 1,609,791.47 | 2,333,199.01 | 39° 29' 1.846 N | 107° 51' 45.796 W |
| Top of "G" Sand | | | | | | | | | |
| 1,617.1 | 5.84 | 17.28 | 1,610.0 | 135.9 | 42.3 | 1,609,801.15 | 2,333,202.30 | 39° 29' 1.943 N | 107° 51' 45.758 W |
| Base of "G" Sand | | | | | | | | | |
| 4,014.5 | 5.84 | 17.28 | 3,995.0 | 368.7 | 114.7 | 1,610,031.93 | 2,333,280.72 | 39° 29' 4.243 N | 107° 51' 44.834 W |
| Mesaverde | | | | | | | | | |
| 4,770.1 | 5.84 | 17.28 | 4,746.6 | 442.0 | 137.5 | 1,610,104.66 | 2,333,305.43 | 39° 29' 4.968 N | 107° 51' 44.543 W |
| Start Drop -1.50 | | | | | | | | | |
| 5,159.1 | 0.00 | 0.00 | 5,135.0 | 460.9 | 143.4 | 1,610,123.40 | 2,333,311.80 | 39° 29' 5.155 N | 107° 51' 44.468 W |
| Vertical | | | | | | | | | |
| 5,259.1 | 0.00 | 0.00 | 5,235.0 | 460.9 | 143.4 | 1,610,123.40 | 2,333,311.80 | 39° 29' 5.155 N | 107° 51' 44.468 W |
| Top Gas - Approx. Top Gas | | | | | | | | | |
| 6,754.1 | 0.00 | 0.00 | 6,730.0 | 460.9 | 143.4 | 1,610,123.40 | 2,333,311.80 | 39° 29' 5.155 N | 107° 51' 44.468 W |
| Cameo Coals | | | | | | | | | |
| 7,522.1 | 0.00 | 0.00 | 7,498.0 | 460.9 | 143.4 | 1,610,123.40 | 2,333,311.80 | 39° 29' 5.155 N | 107° 51' 44.468 W |
| Base Lower Cameo Pay | | | | | | | | | |
| 7,524.1 | 0.00 | 0.00 | 7,500.0 | 460.9 | 143.4 | 1,610,123.40 | 2,333,311.80 | 39° 29' 5.155 N | 107° 51' 44.468 W |
| Coal D | | | | | | | | | |
| 7,659.1 | 0.00 | 0.00 | 7,635.0 | 460.9 | 143.4 | 1,610,123.40 | 2,333,311.80 | 39° 29' 5.155 N | 107° 51' 44.468 W |
| Rollins SS | | | | | | | | | |
| 7,674.1 | 0.00 | 0.00 | 7,650.0 | 460.9 | 143.4 | 1,610,123.40 | 2,333,311.80 | 39° 29' 5.155 N | 107° 51' 44.468 W |
| TD at 7674.1 - TD | | | | | | | | | |

| Design Targets | | | | | | | | | |
|---------------------------|---------------|--------------|------------|--------------|--------------|-----------------|----------------|-----------------|-------------------|
| Target Name | Dip Angle (") | Dip Dir. (") | TVD (usft) | +N/-S (usft) | +E/-W (usft) | Northing (usft) | Easting (usft) | Latitude | Longitude |
| - hit/miss target | | | | | | | | | |
| - Shape | | | | | | | | | |
| Top Gas (25' Radius) R1 | 0.00 | 0.00 | 5,235.0 | 460.9 | 143.4 | 1,610,123.40 | 2,333,311.80 | 39° 29' 5.155 N | 107° 51' 44.468 W |
| - plan hits target center | | | | | | | | | |
| - Circle (radius 25.0) | | | | | | | | | |

| Casing Points | | | | | |
|-----------------------|-----------------------|--------|----------------------|--------------------|--|
| Measured Depth (usft) | Vertical Depth (usft) | Name | Casing Diameter (in) | Hole Diameter (in) | |
| 1,104.4 | 1,100.0 | 9 5/8" | 9.625 | 12.250 | |

Williams
Planning Report - Geographic

| | | | |
|-----------|------------------------|------------------------------|--|
| Database: | Compass R5000 WIN AUTH | Local Co-ordinate Reference: | Well RWF 12-35 - Slot B1 |
| Company: | PICEANCE VLY NAD 83 | TVD Reference: | KELLY BUSHING @ 5574.0usft (H&P 271 (24') kjs) |
| Project: | RU 35-06S-094W | MD Reference: | KELLY BUSHING @ 5574.0usft (H&P 271 (24') kjs) |
| Site: | RMV 15-35 Pad | North Reference: | True |
| Well: | RWF 12-35 | Survey Calculation Method: | Minimum Curvature |
| Wellbore: | Wellbore #1 | | |
| Design: | Plan #2 17Dec10 kjs | | |

| Formations | | | | | |
|-----------------------|-----------------------|----------------------|-----------|---------|-------------------|
| Measured Depth (usft) | Vertical Depth (usft) | Name | Lithology | Dip (") | Dip Direction (") |
| 1,516.6 | 1,510.0 | Top of "G" Sand | | | |
| 1,617.1 | 1,610.0 | Base of "G" Sand | | | |
| 4,014.5 | 3,995.0 | Mesaverde | | | |
| 5,259.1 | 5,235.0 | Approx. Top Gas | | | |
| 6,754.1 | 6,730.0 | Cameo Coals | | | |
| 7,522.1 | 7,498.0 | Base Lower Cameo Pay | | | |
| 7,524.1 | 7,500.0 | Coal D | | | |
| 7,659.1 | 7,635.0 | Rollins SS | | | |
| 7,674.1 | 7,650.0 | TD | | | |

| Plan Annotations | | | | |
|-----------------------|-----------------------|-------------------|--------------|-----------------------|
| Measured Depth (usft) | Vertical Depth (usft) | Local Coordinates | | Comment |
| | | +N/-S (usft) | +E/-W (usft) | |
| 120.0 | 120.0 | 0.0 | 0.0 | Start Build 3.00 |
| 314.5 | 314.2 | 9.4 | 2.9 | Hold 5.84 Inclination |
| 4,770.1 | 4,746.6 | 442.0 | 137.5 | Start Drop -1.50 |
| 5,159.1 | 5,135.0 | 460.9 | 143.4 | Vertical |
| 5,259.1 | 5,235.0 | 460.9 | 143.4 | Top Gas |
| 7,674.1 | 7,650.0 | 460.9 | 143.4 | TD at 7674.1 |