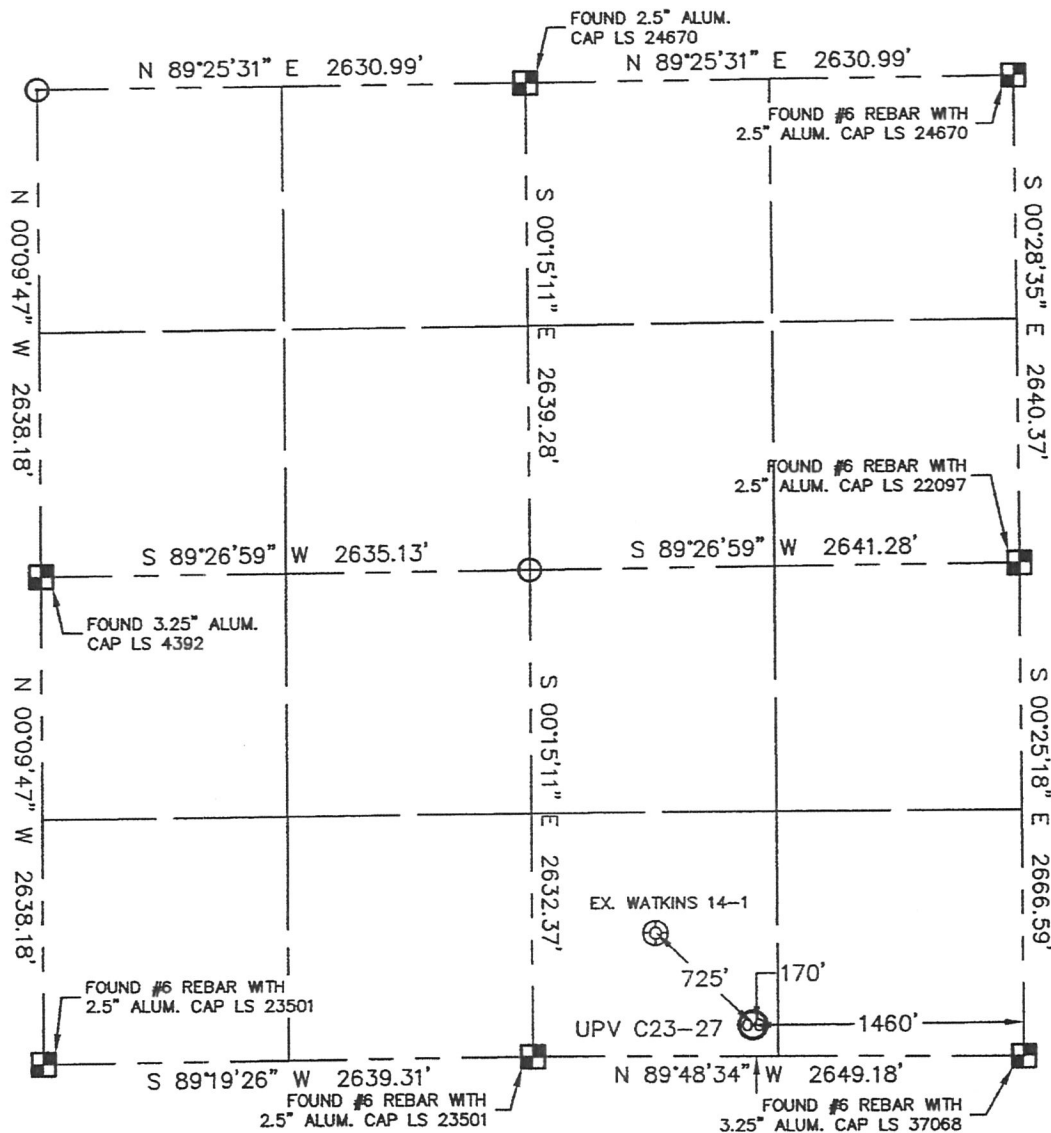


# WELL LOCATION CERTIFICATE

THIS MAP DOES NOT REPRESENT A BOUNDARY SURVEY

SECTION: 14  
TOWNSHIP: 4N  
RANGE: 64W



In accordance with a request from MATT CAMPBELL with Noble Energy Inc. Lat40°, LLC has determined the surface location of the UPV C23-27 to be 170' from the SOUTH line and 1460' from the EAST line as measured at right angles from the section line of Section 14, Township 4 North, Range 64 West of the Sixth Principal Meridian, County of Weld, State of Colorado.

I hereby state that this Well Location Certificate was prepared by me, or under my direct supervision, that the fieldwork was completed on 8/24/10, for and on behalf of Noble Energy Inc. That this is not a Land Survey Plat or an Improvement Survey Plat, and that it is not to be relied upon for establishment of fence, building, or other future improvement lines.

**NOTE:**

- 1) Bearings shown are Grid Bearings of the Colorado State Plane Coordinate System, North Zone, North American Datum 1983/2007. The lineal dimensions as contained herein are based upon the "U.S. Survey Foot."
- 2) Ground elevations are based on an observed GPS elevation (NAVD 1988 DATUM).
- 3) NEAREST EXISTING WELL: WATKINS 14-1 725'
- 4) IMPROVEMENTS: See LOCATION DRAWING for all visible improvements within 400' of disturbed area.
- 5) SURFACE USE: CROP IRRIGATED
- 6) INSTRUMENT OPERATOR: BRIAN BRINKMAN



**SURFACE LOCATION**

LATITUDE: 40.30565N  
LONGITUDE: 104.51364W  
PDOP: 1.4  
ELEV: 4648  
1/4, 1/4: SW1/4SE1/4  
NEAREST PROPERTY LINE: 170' SOUTH

**NOTE**

According to Colorado law, you must commence any legal action based upon any defect in this W.L.C. within three years after you discover such defect. In no event, may any action based upon any defect in this survey be commenced more than ten years after the date of the certificate shown hereon. (13-80-105 C.R.S.)

## LEGEND

-  = ALIQUOT MONUMENT AS DESCRIBED  
 = CALCULATED POSITION



Brian T. Brinkman—On behalf of Lat40°, LLC  
Colorado Licensed Professional  
Land Surveyor No. 38175

PROJECT#: 2010058

Lat40°, LLC

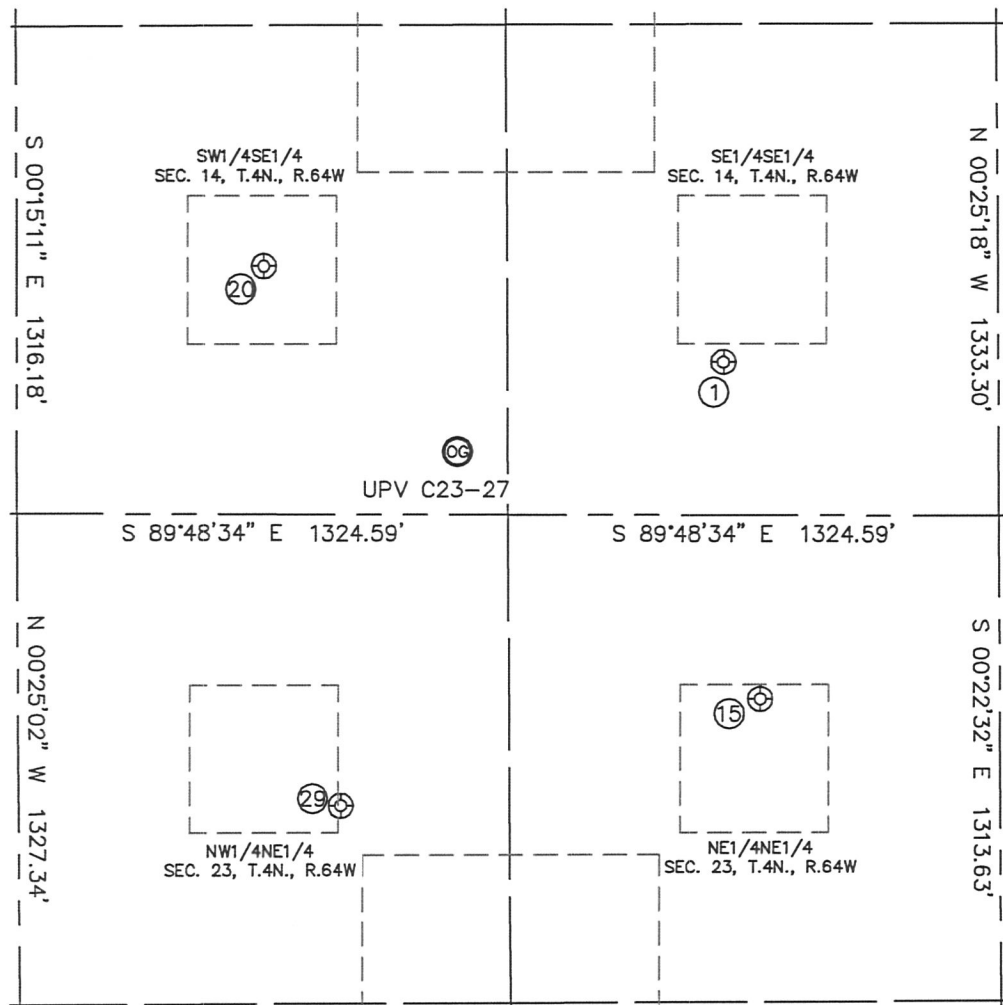
1635 Foxtrail Drive, Suite 325

Loveland, CO 80538

# SITE SKETCH

UPV C23-27

SECTION: 14  
TOWNSHIP: 4N  
RANGE: 64W



①

WATKINS NO. 14-16  
SE1/4SE1/4  
415' FSL  
741' FEL  
LAT-40.30629°N  
LONG-104.51105°W  
PDOP: 1.5  
ELEV: 4650

⑮

UPV 23-114  
NE1/4NE1/4  
496' FNL  
646' FEL  
LAT-40.30378°N  
LONG-104.51073°W  
PDOP: 1.4  
ELEV: 4651

⑳

WATKINS 14-1  
SW1/4SE1/4  
669' FSL  
1981' FEL  
LAT-40.30704°N  
LONG-104.51549°W  
PDOP: 1.3  
ELEV: 4650

㉑

UPV 23-214  
NW1/4NE1/4  
788' FNL  
1780' FEL  
LAT-40.30303°N  
LONG-104.51480°W  
PDOP: 2.6  
ELEV: 4651

