

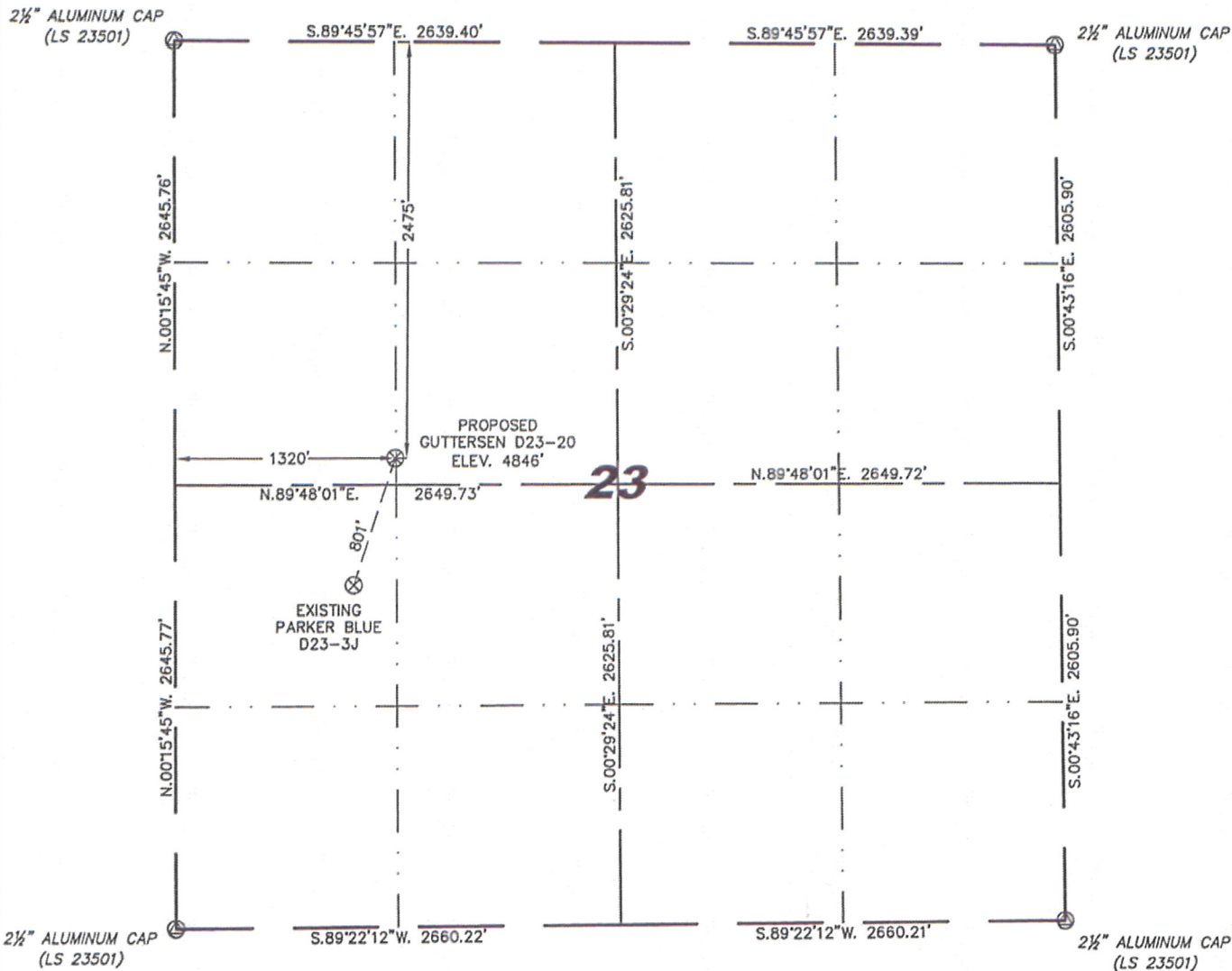
Stell Surveying Services, LLC

1102 West 19th Street P.O. BOX 2073

Cheyenne, Wyoming 82009

**WELL LOCATION CERTIFICATE**  
THIS MAP DOES NOT REPRESENT A BOUNDARY SURVEY

SECTION 23  
TOWNSHIP 3 NORTH  
RANGE 64 WEST



0 1000

Scale: 1" = 1000'

IN ACCORDANCE WITH A REQUEST FROM BRIAN DeROSE - NOBLE ENERGY INC, STEIL SURVEYING SERVICES, LLC HAS DETERMINED THE LOCATION OF THE GUTTERSEN D23-20 WELL TO BE 2475' FNL, 1320' FWL, AS MEASURED AT NINETY (90) DEGREES FROM THE SECTION LINES, SECTION 23, TOWNSHIP 3 NORTH, RANGE 64 WEST, 6TH PRINCIPLE MERIDIAN, WELD COUNTY, COLORADO.

I HEREBY CERTIFY THAT THIS WELL LOCATION CERTIFICATE WAS PREPARED BY ME, OR UNDER MY DIRECT SUPERVISION, THAT THE FIELD WORK WAS COMPLETED ON 12/08/2010, FOR AND ON BEHALF OF NOBLE ENERGY INC, THAT IT IS NOT A LAND SURVEY PLAT OR AN IMPROVEMENT SURVEY PLAT, AND THAT IT IS NOT TO BE RELIED UPON FOR ESTABLISHMENT OF FENCE, BUILDING, OR OTHER FUTURE IMPROVEMENT LINES.

**NOTES:**

- 1) BASIS OF BEARINGS FOR THIS MAP ARE BASED UPON GPS OBSERVATIONS MADE ON 12/08/2010 BETWEEN MONUMENTS LOCATED AT THE SOUTHEAST SECTION CORNER AND THE NORTHEAST SECTION CORNER OF SAID SECTION AND WITH ALL BEARINGS SHOWN HEREON RELATIVE THERETO.
- 2) COORDINATES SHOWN ARE COLORADO STATE PLANE (NORTH ZONE) NAD 83.
- 3) ELEVATIONS ARE BASED UPON NGS OPUS SOLUTION NAVD 88 DATUM.
- 4) THE NEAREST EXISTING WELL IS: PARKER BLUE D23-3J, 801' SOUTHWEST.
- 5) SEE LOCATION DRAWING FOR ALL IMPROVEMENTS WITHIN VISIBLE IMPROVEMENTS LIMIT.
- 6) THE LOCATION FALLS IN PASTURE LAND.

LATITUDE & LONGITUDE (NAD 83 SURFACE HOLE):

LATITUDE: N 40.21131°

LONGITUDE: W 104.52320°

PDOP: 2.2

QUARTER-QUARTER: SW/4NW/4

NEAREST PROPERTY LINE: 1320' TO THE WEST

**LEGEND**



FOUND SURVEY MONUMENT PER  
MONUMENT RECORD - EXCEPTIONS NOTED.



CALCULATED DIMENSION

NOTICE: According to Colorado law you MUST commence any legal action based upon any defect in this W.L.C. within three years after you first discover such defect. In no event may any action based upon any defect in this W.L.C. be commenced more than ten years from this said date of the certification shown hereon.

David C. Holmes  
Professional Land Surveyor Registration No. 32828  
State of Colorado

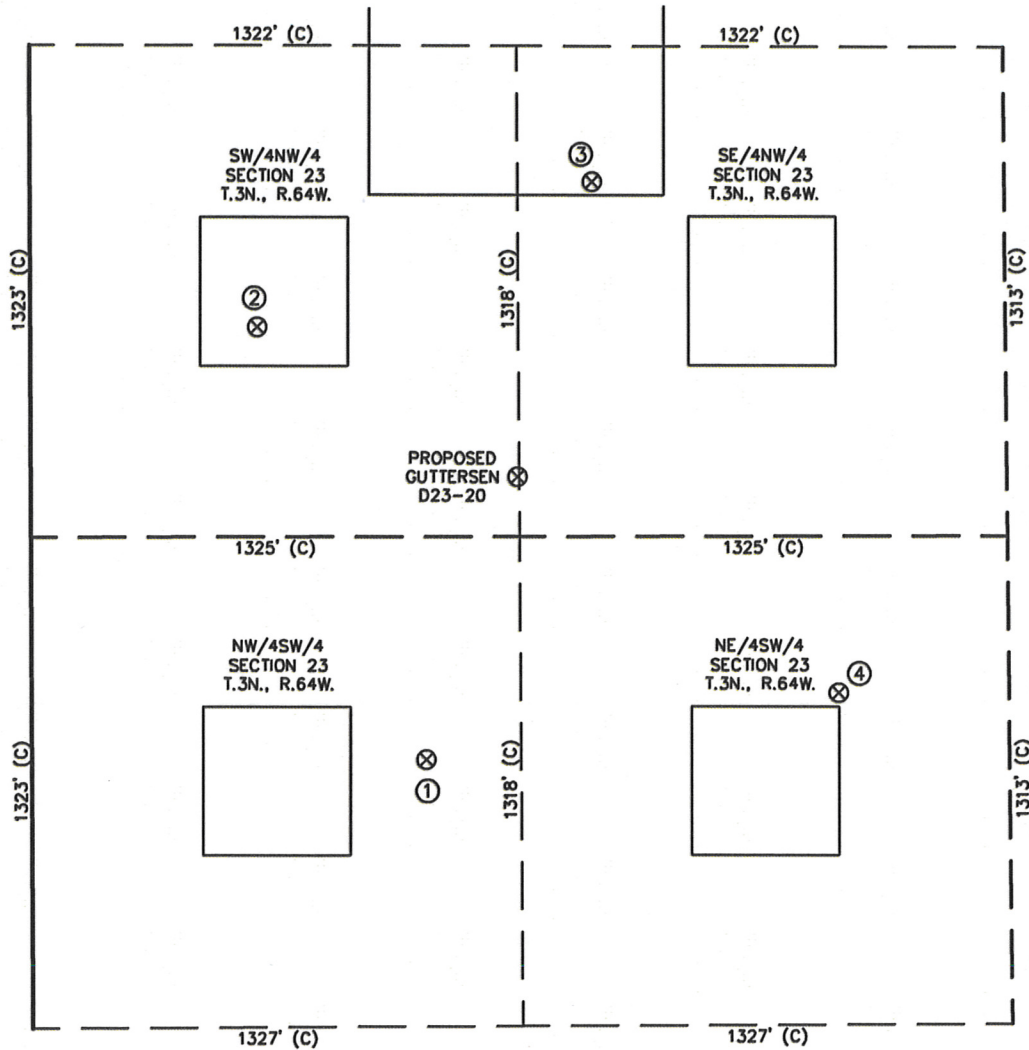
JOB #: 10086

Completed 12/28/2010



# SKETCH - GUTTERSEN D23-20

SECTION 23  
TOWNSHIP 3 NORTH  
RANGE 64 WEST



①

PARKER BLUE  
D23-3J  
NW/SW SEC. 23  
2037' FSL  
1069' FWL  
EL 4849'  
N 40.20922  
W 104.52412  
PDOP 1.9

②

PARKER RED  
D23-5  
SW/NW SEC. 23  
2077' FNL  
616' FWL  
EL 4852'  
N 40.21243  
W 104.52572  
PDOP 1.8

③

PARKER RED  
D23-2J  
SE/NW SEC. 23  
1681' FNL  
1526' FWL  
EL 4842'  
N 40.21348  
W 104.52245  
PDOP 1.8

④

PARKER BLUE  
D23-11  
NE/SW SEC. 23  
2207' FSL  
2189' FWL  
EL 4836'  
N 40.20969  
W 104.52011  
PDOP 1.8

## NOTES:

- 1) THIS SKETCH DOES NOT REPRESENT A BOUNDARY SURVEY.
- 2) THE DATUM FOR THE LATITUDES AND LONGITUDES ON THIS SKETCH IS NAD83.

