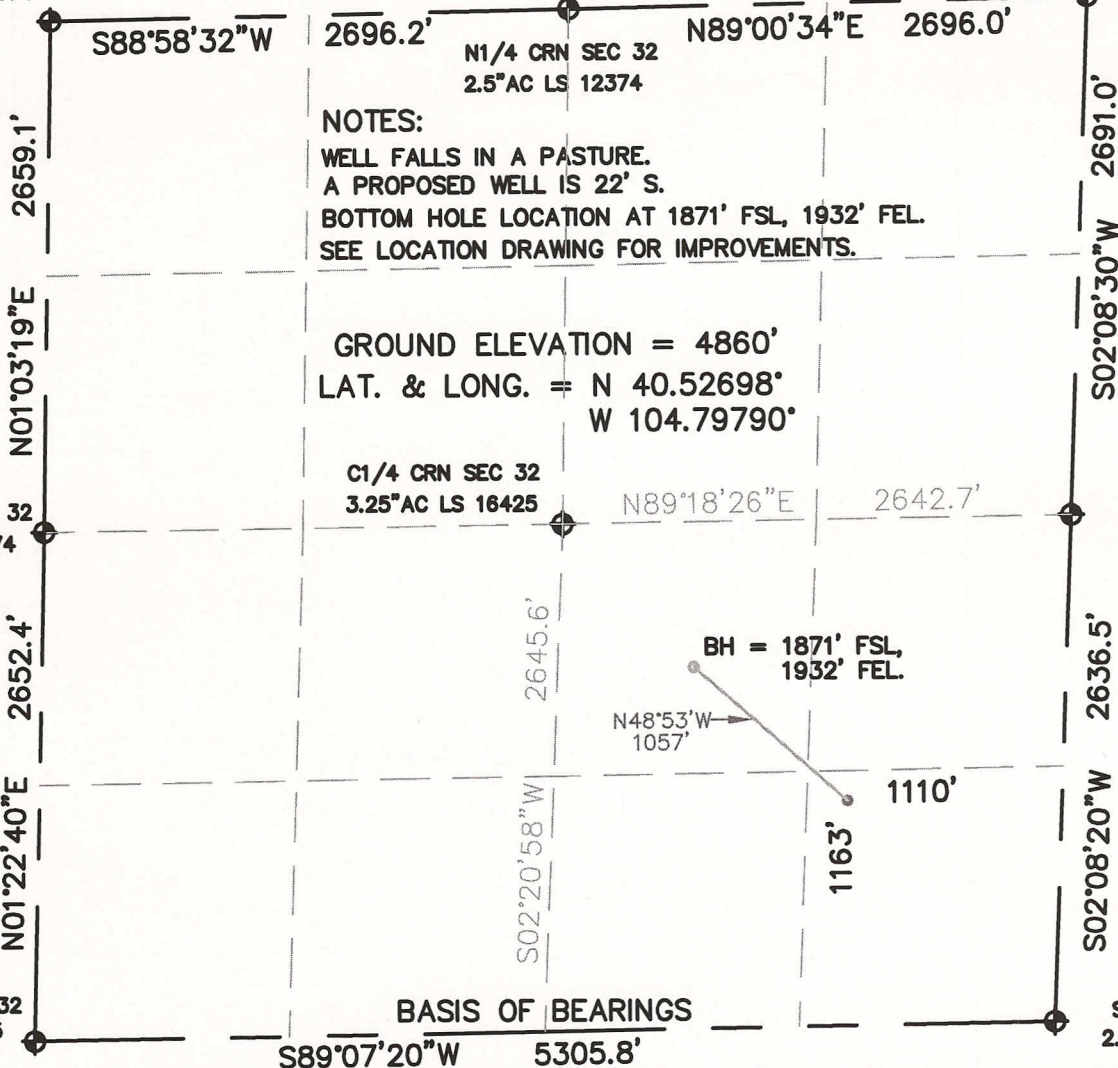


WELL LOCATION CERTIFICATE

NW CRN SEC. 32
2.5"AC LS 12374

SECTION 32, TOWNSHIP 7 NORTH, RANGE 66 WEST, 6TH P.M.

NE CRN SEC. 32
3.25"AC LS 28285



NOTES:
WELL FALLS IN A PASTURE.
A PROPOSED WELL IS 22' S.
BOTTOM HOLE LOCATION AT 1871' FSL, 1932' FEL.
SEE LOCATION DRAWING FOR IMPROVEMENTS.

GROUND ELEVATION = 4860'
LAT. & LONG. = N 40.52698°
W 104.79790°

C1/4 CRN SEC 32
3.25"AC LS 16425

N89°18'26"E 2642.7'

E1/4 CRN SEC 32
2.5"AC LS 16154

BH = 1871' FSL,
1932' FEL.

N48°53'W
1057'

1110'

1163'

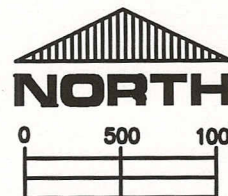
BASIS OF BEARINGS

I HEREBY STATE TO PETROLEUM DEVELOPMENT CORP. THAT THIS WELL LOCATION CERTIFICATE FOR THE WELL NELSON 33-32D IS LOCATED 1163' FSL & 1110' FEL, SEC. 32, T7N, R66W, 6PM.



LEGEND

- ◆ = FOUND MONUMENT
- = PROPOSED WELL
- ◊ = BOTTOM HOLE



SCALE 1" = 1000'

ELEVATION SOURCE = USGS 7.5' QUAD.MAP CONTOURS
NGVD 1929 DATUM.

LAT. & LONG. ARE DIFFERENTIALLY CORRECTED (NAD'83)
USING (DGPS) WITH (PDOP) VALUES LESS THAN SIX (6).

THOMAS G. CARLSON, PLS 24657
HORSESHOE SURVEYING, LLC

SHOWN DISTANCES ARE FIELD MEASURED - EXTERIOR SECTION LINES
ARE DRAWN TO SCALE (BEST APPROX. OR FOUND MONUMENT ◆).

THIS IS NOT A MONUMENTED BOUNDARY SURVEY, IT IS ONLY A
DRAWING INTENDED TO DEPICT THE WELL LOCATION TO SECTION LINES.

DISTANCES TO WELL SHOWN PERPENDICULAR
TO SECTION LINES.

PREPARED BY:		HORSESHOE SURVEYING, LLC PO BOX 150458 LAKEWOOD, CO 80215 (720)872-0196		WELL NAME: NELSON 33-32D	
DRAWING DATE: 1-7-11				LOCATION: WELD COUNTY, CO SE1/4, SEC. 32, T7N, R66W, 6TH P.M.	
FIELD DATE: 1-5-11	BY: TGC	CHKD:	JOB NO.	SHEET NO. 1 OF 1	