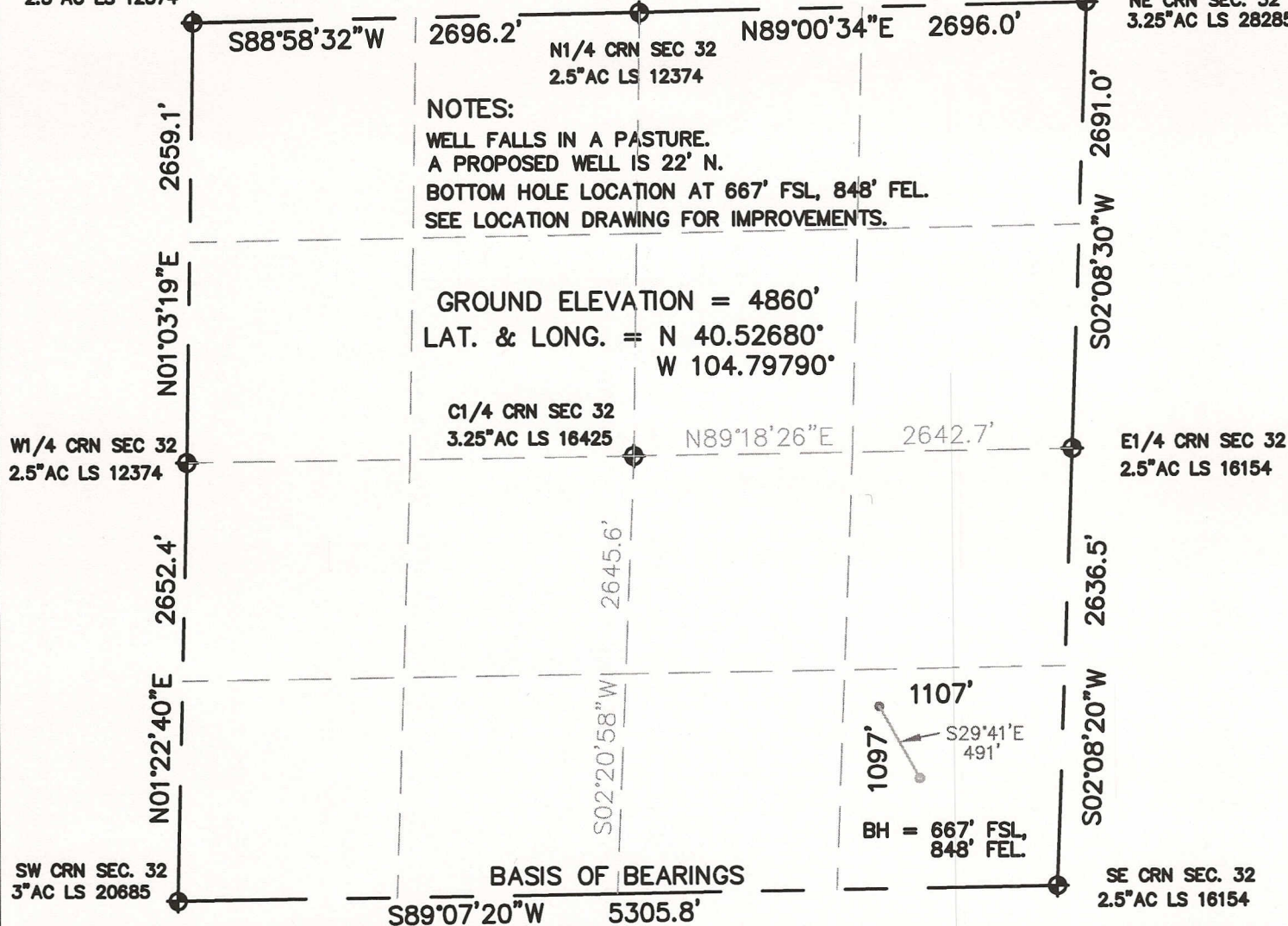


# WELL LOCATION CERTIFICATE

NW CRN SEC. 32  
2.5"AC LS 12374

SECTION 32, TOWNSHIP 7 NORTH, RANGE 66 WEST, 6TH P.M.

NE CRN SEC. 32  
3.25"AC LS 28285



## NOTES:

WELL FALLS IN A PASTURE.  
A PROPOSED WELL IS 22' N.

BOTTOM HOLE LOCATION AT 667' FSL, 848' FEL.  
SEE LOCATION DRAWING FOR IMPROVEMENTS.

GROUND ELEVATION = 4860'  
LAT. & LONG. = N 40.52680°  
W 104.79790°

C1/4 CRN SEC 32  
3.25"AC LS 16425

N89°18'26"E

2642.7'

E1/4 CRN SEC 32  
2.5"AC LS 16154

2645.6'

S02°20'58"W

1097'  
1107'  
S29°41'E  
491'

BH = 667' FSL,  
848' FEL

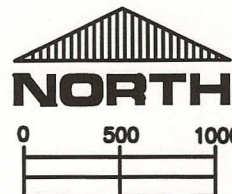
BASIS OF BEARINGS

SE CRN SEC. 32  
2.5"AC LS 16154

I HEREBY STATE TO PETROLEUM DEVELOPMENT CORP. THAT THIS WELL LOCATION CERTIFICATE FOR THE WELL NELSON 44-32D IS LOCATED 1097' FSL & 1107' FEL, SEC. 32, T7N, R66W, 6PM.

## LEGEND

- = FOUND MONUMENT
- = PROPOSED WELL
- = BOTTOM HOLE



SCALE 1" = 1000'

ELEVATION SOURCE = USGS 7.5' QUAD.MAP CONTOURS  
NGVD 1929 DATUM.

LAT. & LONG. ARE DIFFERENTIALLY CORRECTED (NAD'83)  
USING (DGPS) WITH (PDOP) VALUES LESS THAN SIX (6).

SHOWN DISTANCES ARE FIELD MEASURED - EXTERIOR SECTION LINES  
ARE DRAWN TO SCALE (BEST APPROX. OR FOUND MONUMENT ●).

DISTANCES TO WELL SHOWN PERPENDICULAR  
TO SECTION LINES.

THOMAS G. CARLSON, PLS 24657  
HORSESHOE SURVEYING, LLC

THIS IS NOT A MONUMENTED BOUNDARY SURVEY, IT IS ONLY A  
DRAWING INTENDED TO DEPICT THE WELL LOCATION TO SECTION LINES.

PREPARED BY: HORSESHOE SURVEYING, LLC  
PO BOX 150458  
LAKEWOOD, CO 80215  
(720)872-0196

DRAWING DATE:  
1-7-11

FIELD DATE:  
1-5-11

BY: TGC

CHKD:

WELL NAME:

NELSON 44-32D

LOCATION:

WELD COUNTY, CO  
SE1/4, SEC. 32, T7N, R66W, 6TH P.M.

JOB NO.

SHEET NO.

1 OF 1