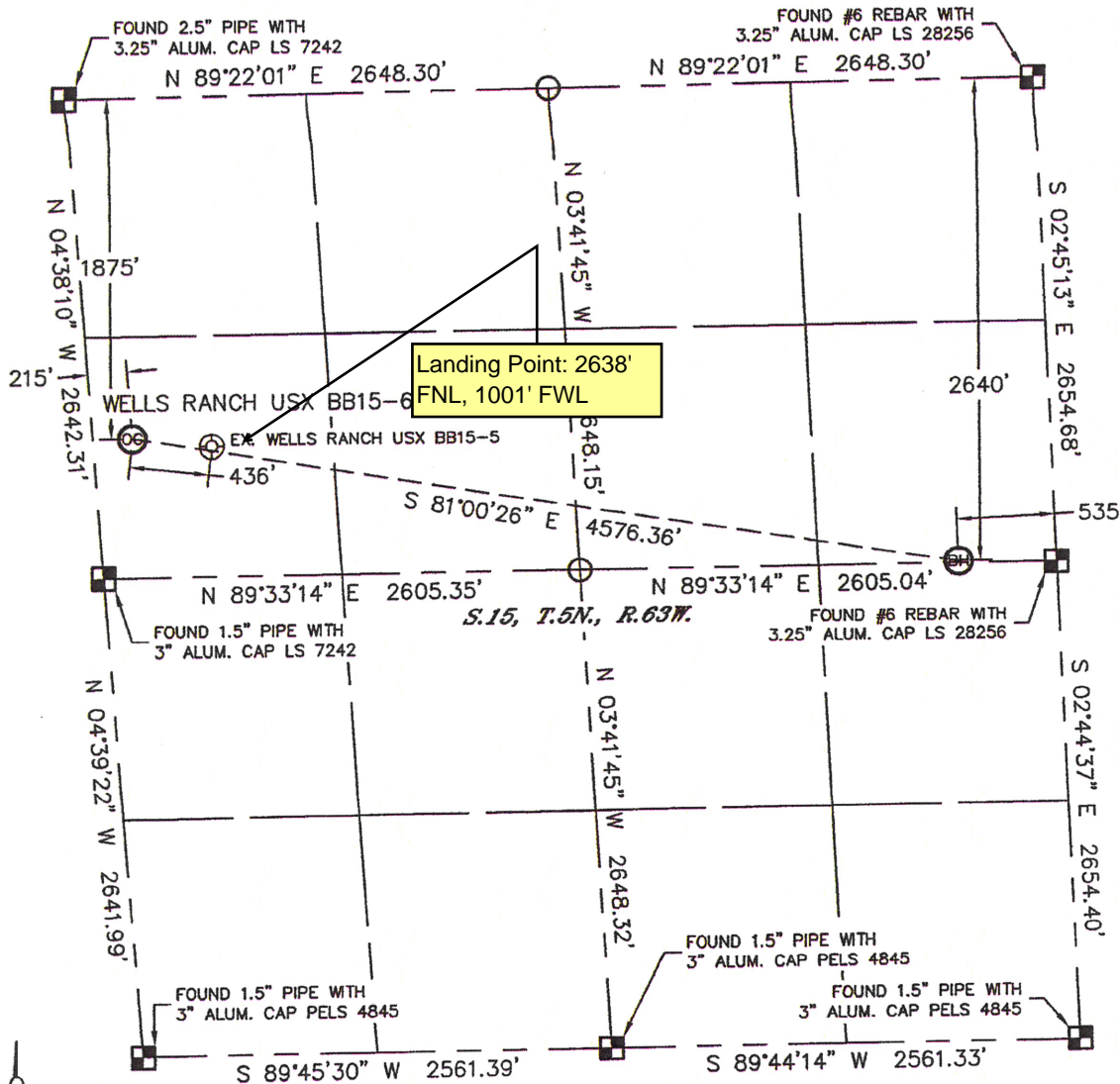


# WELL LOCATION CERTIFICATE

THIS MAP DOES NOT REPRESENT A BOUNDARY SURVEY

SECTION: 15  
TOWNSHIP: 5N  
RANGE: 63W



In accordance with a request from Sean Casper with Noble Energy Inc. Lat40°, LLC has determined the surface location of the WELLS RANCH USX BB15-6SHN to be 1875' from the NORTH line and 215' from the WEST line and the bottom hole to be 2640' from the NORTH line and 535' from the EAST line as measured at right angles from the section lines of Section 15, Township 5 North, Range 63 West of the Sixth Principal Meridian, County of Weld, State of Colorado.

I hereby state that this Well Location Certificate was prepared by me, or under my direct supervision, that the fieldwork was completed on 12/21/10, for and on behalf of Noble Energy Inc. That this is not a Land Survey Plat or an Improvement Survey Plat, and that it is not to be relied upon for establishment of fence, building, or other future improvement lines.

SURFACE LOCATION  
LATITUDE: 40.40149°N  
LONGITUDE: 104.43121°W  
PDOP: 1.7  
ELEV: 4665'  
1/4, 1/4: SW1/4NW1/4  
NEAREST PROPERTY LINE: 215' WEST

BOTTOM HOLE  
LATITUDE: 40.39938°N  
LONGITUDE: 104.41502°W

**NOTE:**

- 1) Bearings shown are Grid Bearings of the Colorado State Plane Coordinate System, North Zone, North American Datum 1983/2007. The lineal dimensions as contained herein are based upon the "U.S. Survey Foot."
- 2) Ground elevations are based on an observed GPS elevation (NAVD 1988 DATUM).
- 3) NEAREST EXISTING WELL: WELLS RANCH USX BB15-5, 436'
- 4) IMPROVEMENTS: See LOCATION DRAWING for all visible improvements within 400' of disturbed area.
- 5) SURFACE USE: RANGELAND
- 6) INSTRUMENT OPERATOR: AARON LUND

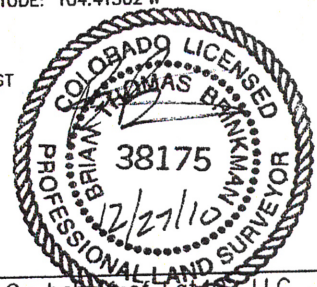
**NOTE**

According to Colorado law, you must commence any legal action based upon any defect in this W.L.C. within three years after you discover such defect. In no event, may any action based upon any defect in this survey be commenced more than ten years after the date of the certificate shown hereon. (13-80-105 C.R.S.)

## LEGEND

- = ALIQUOT MONUMENT AS DESCRIBED
- = CALCULATED POSITION

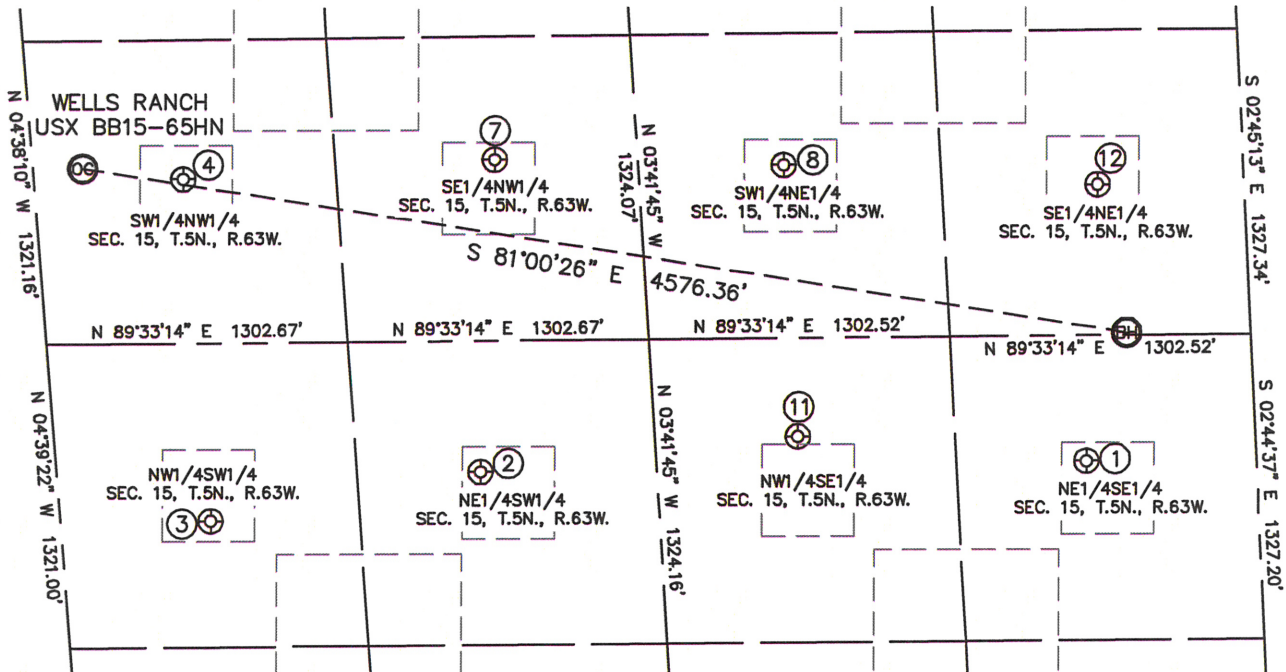
Brian T. Brinkman—On behalf of Lat40°, LLC  
Colorado Licensed Professional  
Land Surveyor No. 38175 PROJECT#: 2010181



# SITE SKETCH

## WELLS RANCH USX BB15-65HN

SECTION: 15  
TOWNSHIP: 5N  
RANGE: 63W



①  
WELLS RANCH  
USX BB 15-9  
NE1/4SE1/4  
2106' FSL  
734' FWL  
LAT-40.39786°N  
LONG-104.41566°W  
PDOP: 2.3  
ELEV: 4633'

②  
WELLS RANCH  
USX BB 15-11  
NE1/4SW1/4  
2073' FSL  
1829' FWL  
LAT-40.39782°N  
LONG-104.42507°W  
PDOP: 1.9  
ELEV: 4646'

③  
WELLS RANCH  
USX BB 15-12  
NW1/4SW1/4  
1866' FSL  
648' FWL  
LAT-40.39728°N  
LONG-104.42927°W  
PDOP: 2.2  
ELEV: 4668'

④  
WELLS RANCH  
USX BB 15-5  
SW1/4NW1/4  
1925' FSL  
644' FWL  
LAT-40.40135°N  
LONG-104.42966°W  
PDOP: 3.2  
ELEV: 4679'

⑦  
WELLS 22-15  
SE1/4NW1/4  
1857' FSL  
1995' FWL  
LAT-40.40154°N  
LONG-104.42481°W  
PDOP: 1.2  
ELEV: 4675'

⑧  
WELLS RANCH  
USX BB 15-7  
SW1/4NE1/4  
1895' FSL  
1987' FWL  
LAT-40.40143°N  
LONG-104.42033°W  
PDOP: 1.8  
ELEV: 4650'

⑪  
WELLS 33-15  
NW1/4SE1/4  
2219' FSL  
1979' FWL  
LAT-40.39819°N  
LONG-104.42015°W  
PDOP: 1.8  
ELEV: 4637'

⑫  
WELLS 42-15  
SE1/4NE1/4  
1996' FSL  
633' FWL  
LAT-40.40114°N  
LONG-104.41545°W  
PDOP: 3.4  
ELEV: 4648'

