

---

# **SAMSON RESOURCES CORP - EBUS**

---

**Ute 33-8-29 #4**

**La Plata County , Colorado**

**Cement Surface Casing**  
**25-Apr-2010**

**Job Site Documents**

## The Road to Excellence Starts with Safety

Sold To #: 345114	Ship To #: 345114	Quote #:	Sales Order #: 7328142
Customer: SAMSON RESOURCES CORP - EBUS	Customer Rep: DENNISON, FRED		
Well Name: Ute 33-8-29	Well #: #4	API/UWI #:	
Field:	City (SAP): TULSA	County/Parish: La Plata	State: Colorado
Contractor: H & P	Rig/Platform Name/Num: H & P 292		
Job Purpose: Cement Surface Casing			
Well Type: Development Well	Job Type: Cement Surface Casing		
Sales Person: SNYDER, RANDALL	Srv Supervisor: LEIST, JAMES	MBU ID Emp #:	362787

## Job Personnel

HES Emp Name	Exp Hrs	Emp #	HES Emp Name	Exp Hrs	Emp #	HES Emp Name	Exp Hrs	Emp #
JONES, DAVID Michael	3	409749	LEIST, JAMES R	3	362787	MARTIN, EHLEER Dean	3	458474
OMSBERG, TROY L	3	462388	ONEAL, TALLEY Jack	3	456423			

## Equipment

HES Unit #	Distance-1 way	HES Unit #	Distance-1 way	HES Unit #	Distance-1 way	HES Unit #	Distance-1 way
10001398C	50 mile	10025104	50 mile	10897805	50 mile	10951247	50 mile
11324578	50 mile	11338219	50 mile				

## Job Hours

Date	On Location Hours	Operating Hours	Date	On Location Hours	Operating Hours	Date	On Location Hours	Operating Hours
4-25-10	4	2						

**TOTAL** Total is the sum of each column separately

## Job

Formation Name	Formation Depth (MD)	Top	Bottom	Form Type	Job depth MD	Job depth TVD	Water Depth	Perforation Depth (MD)	From	To
				BHST	631. ft	631. ft				
							Wk Ht Above Floor			4. ft
								Deparated Loc	26 - Apr - 2010	00:00

## Job Times

Date	Time	Time Zone
25 - Apr - 2010	14:00	MST
25 - Apr - 2010	18:00	MST
25 - Apr - 2010	20:55	MST
25 - Apr - 2010	21:45	MST

## Well Data

Description	New / Used	Max pressure psig	Size in	ID in	Weight lbm/ft	Thread	Grade	Top MD ft	Bottom MD ft	Top TVD ft	Bottom TVD ft
12-1/4" Open Hole				12.25				.	600.		
Surface Casing	Unknown		8.625	8.097	24.			.	600.		

Sales/Rental/3<sup>rd</sup> Party (HES)

Description	Qty	Qty uom	Depth	Supplier
PLUG,CMTG,TOP,8 5/8,HWE,7.20 MIN/8.09 MA	1	EA		

## Tools and Accessories

Type	Size	Qty	Make	Depth	Type	Size	Qty	Make	Depth	Type	Size	Qty	Make
Guide Shoe					Packer					Top Plug	8.625	1	
Float Shoe					Bridge Plug					Bottom Plug			
Float Collar					Retainer					SSR plug set			
Insert Float										Plug Container			
Stage Tool										Centralizers			

## Miscellaneous Materials

Gelling Agt	Conc	Surfactant	Conc	Acid Type	Qty	Conc	%
Treatment Fld	Conc	Inhibitor	Conc	Sand Type	Size	Qty	

Fluid Data										
Stage/Plug #: 1										
Fluid #	Stage Type	Fluid Name	Qty	Qty uom	Mixing Density lbm/gal	Yield ft <sup>3</sup> /sk	Mix Fluid Gal/sk	Rate bbl/min	Total Mix Fluid Gal/sk	
1	Water Spacer		10.00	bbl	8.33	.0	.0	.0		
2	Surface Cement	CMT - PREMIUM - CLASS G, 94 LB SK (100003685)	440.0	sacks	15.8	1.17	5.0		5.0	
	94 lbm	CMT - PREMIUM - CLASS G REG OR TYPE V, BULK (100003685)								
	2 %	CALCIUM CHLORIDE - HI TEST PELLET (100005053)								
	0.125 lbm	POLY-E-FLAKE (101216940)								
	4.998 Gal	FRESH WATER								
3	Displacement		38.00	bbl	8.33	.0	.0	.0		
Calculated Values		Pressures		Volumes						
Displacement	38.1	Shut In: Instant		Lost Returns	0	Cement Slurry	91	Pad		
Top Of Cement	SURFACE	5 Min		Cement Returns	43	Actual Displacement	38.1	Treatment		
Frac Gradient		15 Min		Spacers	10	Load and Breakdown		Total Job		
Rates										
Circulating	6.7	Mixing	4	Displacement	5	Avg. Job	5.2			
Cement Left In Pipe	Amount	31.5 ft	Reason	Shoe Joint						
Frac Ring # 1 @	ID		Frac ring # 2 @	ID		Frac Ring # 3 @	ID		Frac Ring # 4 @	ID
The Information Stated Herein Is Correct				Customer Representative Signature						

*The Road to Excellence Starts with Safety*

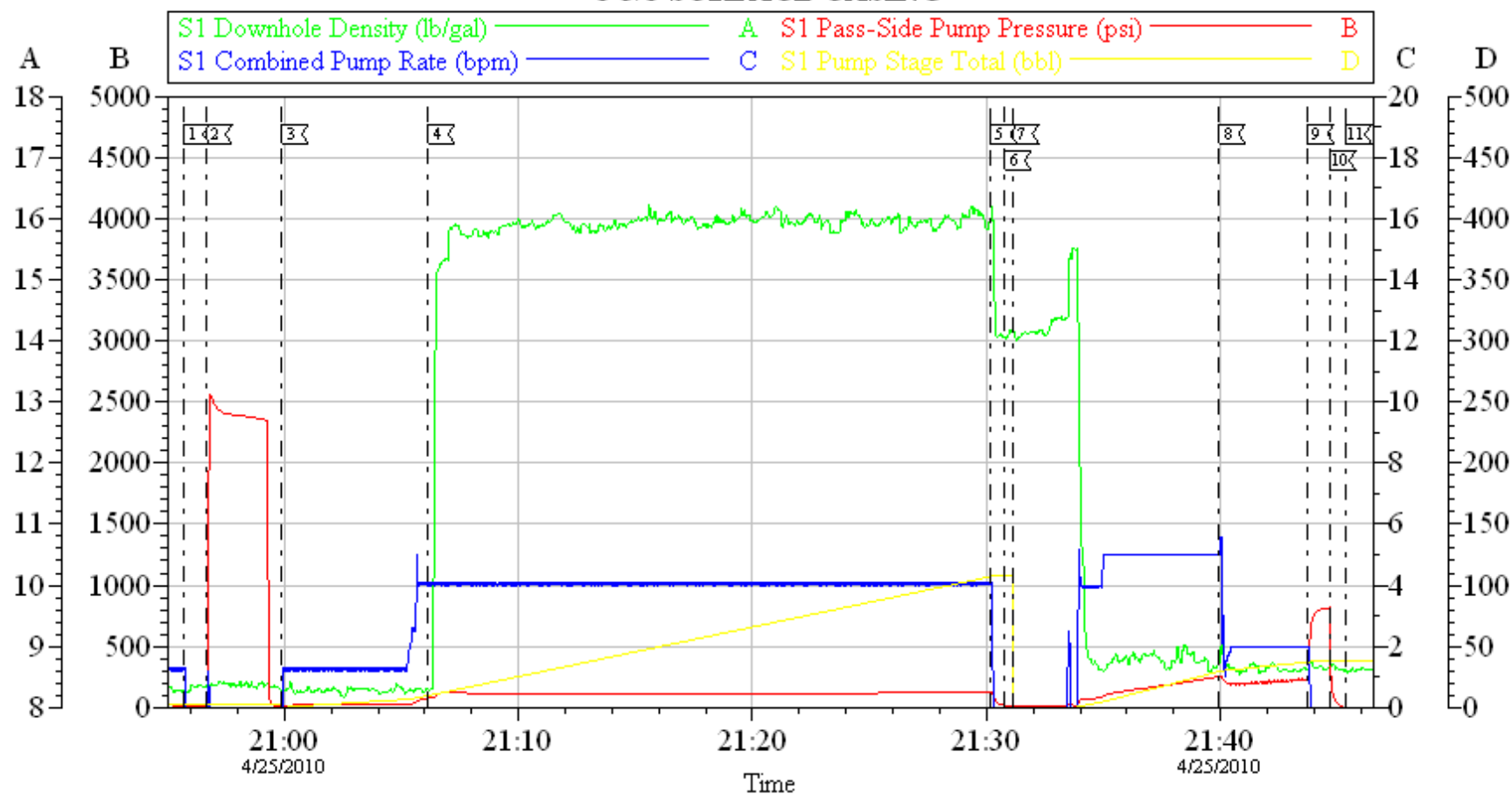
<b>Sold To #:</b> 345114	<b>Ship To #:</b> 345114	<b>Quote #:</b>	<b>Sales Order #:</b> 7328142
<b>Customer:</b> SAMSON RESOURCES CORP - EBUS		<b>Customer Rep:</b> DENNISON, FRED	
<b>Well Name:</b> Ute 33-8-29	<b>Well #:</b> #4	<b>API/UWI #:</b>	
<b>Field:</b>	<b>City (SAP):</b> TULSA	<b>County/Parish:</b> La Plata	<b>State:</b> Colorado
<b>Legal Description:</b>			
<b>Lat:</b> N 0 deg. OR N 0 deg. 0 min. 0 secs.		<b>Long:</b> E 0 deg. OR E 0 deg. 0 min. 0 secs.	
<b>Contractor:</b> H & P		<b>Rig/Platform Name/Num:</b> H & P 292	
<b>Job Purpose:</b> Cement Surface Casing			<b>Ticket Amount:</b>
<b>Well Type:</b> Development Well		<b>Job Type:</b> Cement Surface Casing	
<b>Sales Person:</b> SNYDER, RANDALL		<b>Srv Supervisor:</b> LEIST, JAMES	<b>MBU ID Emp #:</b> 362787

Activity Description	Date/Time	Cht #	Rate bbl/min	Volume bbl		Pressure psig		Comments
				Stage	Total	Tubing	Casing	
Call Out	04/25/2010 14:00							TP 631.17, TD-635, S.J.- 31.5, MUD#-9.1, HOLE SIZE-12 1/4
Pre-Convoy Safety Meeting	04/25/2010 16:00							WITH ALL HES PERSONNEL
Crew Leave Yard	04/25/2010 16:30							
Arrive At Loc	04/25/2010 17:45							RUNNING CASING
Assessment Of Location Safety Meeting	04/25/2010 18:30							WITH ALL HES PERSONNEL
Pre-Rig Up Safety Meeting	04/25/2010 19:30							WITH ALL HES PERSONNEL
Rig-Up Completed	04/25/2010 20:30							
Pre-Job Safety Meeting	04/25/2010 20:40							WITH ALL ON LOCATION PERSONNEL
Start Job	04/25/2010 20:55							GOOD CIRULATION THROUGHOUT JOB, NO PIPE MOVEMENT DURING JOB, PUMP JOB THROUGH 8 5/8 SWAGE
Pressure Test	04/25/2010 20:56							2500 PSI, RIG CIRULATED FOR 1 HOUR PRIOR TO CEMENT JOB @ 6.7 BBL/MIN WITH 40 PSI
Pump Spacer 1	04/25/2010 20:59		2	10			109.0	FRESH WATER
Pump Cement - Start	04/25/2010 21:06		4	91.7			111.0	440 SKS, 15.8 PPG, 1.17 FT3/SK, 5.0 GAL/SK

Activity Description	Date/Time	Cht #	Rate bbl/ min	Volume bbl		Pressure psig		Comments
				Stage	Total	Tubing	Casing	
Shutdown	04/25/2010 21:30							REMOVE SWAGE AND PLACED PLUG IN CASING
Drop Top Plug	04/25/2010 21:30							AWAY
Pump Displacement	04/25/2010 21:31		5	38.1			195.0	FRESH WATER, 43 BBLs CEMENT TO SURFACE
Slow Rate	04/25/2010 21:39		2	28			185.0	TO BUMP PLUG
Bump Plug	04/25/2010 21:43		2	38.1			207.0	PLUG BUMPED
Check Floats	04/25/2010 21:44						645.0	THE FLOATS ARE HOLDING
End Job	04/25/2010 21:45							
Pre-Rig Down Safety Meeting	04/25/2010 22:00							WITH ALL HES PERSONNEL
Rig-Down Completed	04/25/2010 23:00							
Pre-Convoy Safety Meeting	04/25/2010 23:30							WITH ALL HES PERSONNEL
Crew Leave Location	04/26/2010 00:00							
Comment	04/26/2010 00:00							THANKYOU FOR USING HALLIBURTON CEMENT, JAMES LEIST AND CREW

# SAMSON RESOURCES

## 8 5/8 SURFACE CASING



Local Event Log			
1 STARTJOB	20:55:40	2 PRESSURE TEST	20:56:38
4 PUMP CEMENT	21:06:09	5 SHUTDOWN	21:30:10
7 PUMP DISPLACEMENT	21:31:08	8 SLOW RATE	21:39:57
10 CHECK FLOATS	21:44:40	11 END JOB	21:45:20
3 PUMP H2O SPACER	20:59:54	6 DROP TOP PLUG	21:30:47
		9 BUMP PLUG	21:43:44

Customer: SAMSON	Job Date: 25-Apr-2010	Sales Order #: 7328142
Well Description: UTE 33-8-29	Job Type: SURFACE	ADC Used: YES
Company Rep: FRED DENNISON	Cement Supervisor: JAMES LEIST	RED TIGER TALLEY ONEAL

OptiCem v6.3.4  
25-Apr-10 22:12