

T6S, R96W, 6th P.M.

WILLIAMS PRODUCTION RMT COMPANY

Well location, MOBIL GM 343-22 (SURFACE LOCATION), located as shown in the NW 1/4 SW 1/4 of Section 23, T6S, R96W, 6th P.M., Garfield County, Colorado.

BASIS OF ELEVATION

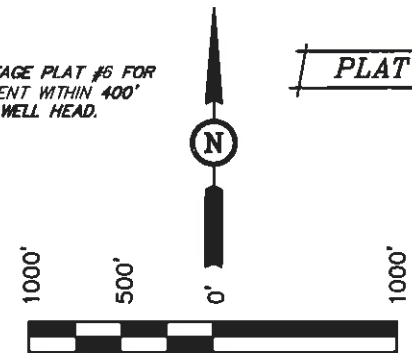
SPOT ELEVATION AT THE NORTHWEST CORNER OF SECTION 30, T5S, R95W, 6th P.M. TAKEN FROM THE FORKED GULCH QUADRANGLE, COLORADO, GARFIELD COUNTY, 7.5 MINUTE SERIES (TOPOGRAPHICAL MAP) PUBLISHED BY THE UNITED STATES DEPARTMENT OF THE INTERIOR, GEOLOGICAL SURVEY. SAID ELEVATION IS MARKED AS BEING 5966 FEET.

BASIS OF BEARINGS

BASIS OF BEARINGS IS A G.P.S. OBSERVATION.

NOTE:
SEE CURRENT FOOTAGE PLAT #6 FOR
EXISTING IMPROVEMENT WITHIN 400'
OF THE PROPOSED WELL HEAD.

PLAT #1



SCALE
CERTIFICATE

THIS IS TO CERTIFY THAT THE ABOVE PLAT WAS PREPARED AND LOCATION AS SHOWN WAS STAKED ON THE GROUND FROM FIELD NOTES OF ACTUAL SURVEYS MADE BY ME OR UNDER MY SUPERVISION AND THAT THE SAME ARE TRUE AND CORRECT TO THE BEST OF MY KNOWLEDGE AND BELIEF.

REGISTERED LAND SURVEYOR
REGISTRATION NO. 87493
STATE OF COLORADO

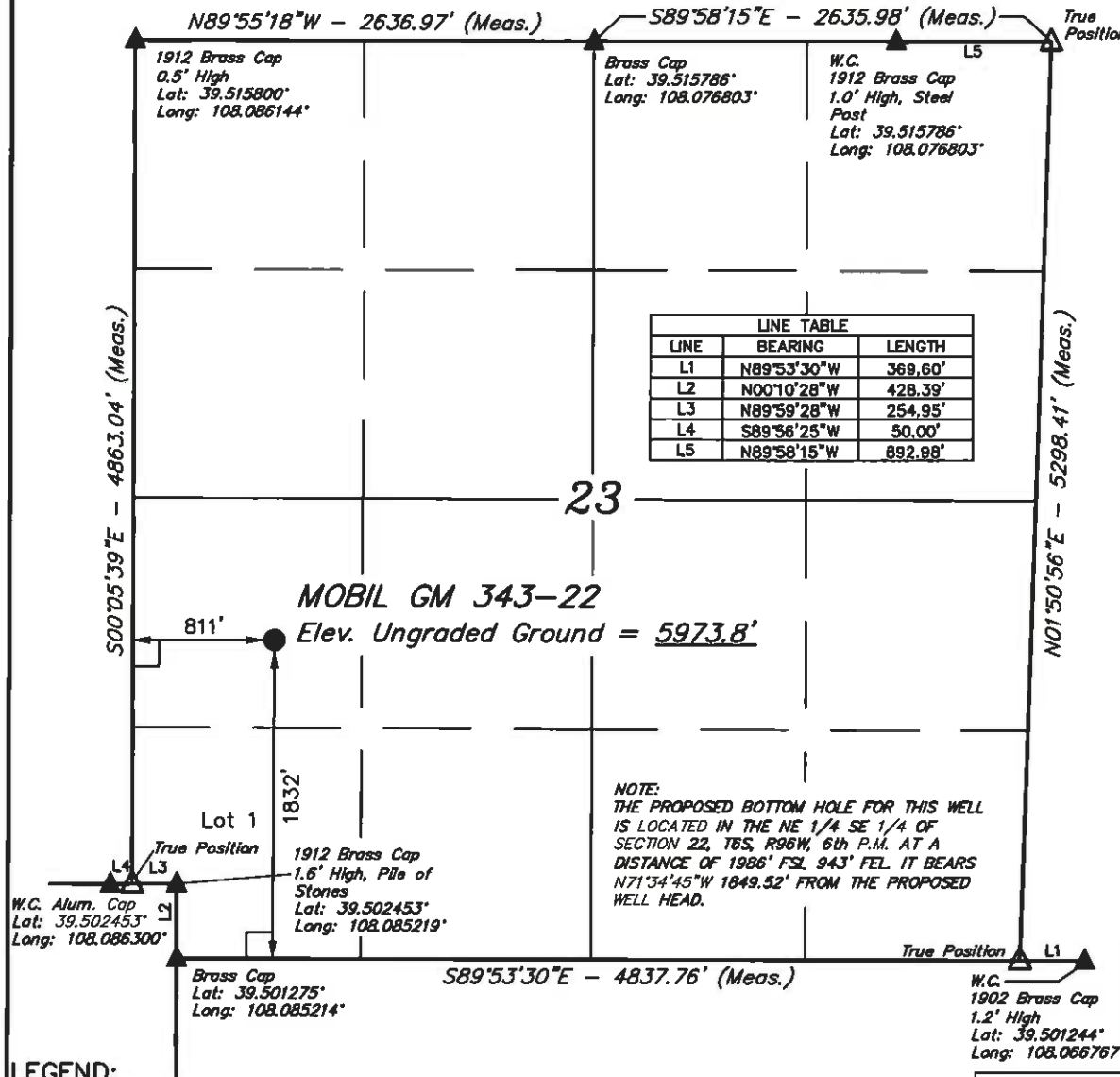
Revised: 02-01-11 D.R.B.

UINTAH ENGINEERING & LAND SURVEYING
85 SOUTH 200 EAST - VERNAL, UTAH 84078
(435) 789-1017

SCALE 1" = 1000'	DATE SURVEYED: 04-13-10	DATE DRAWN: 10-20-10
PARTY G.O. B.B. D.R.B.	REFERENCES G.L.O. PLAT	
WEATHER WARM	FILE	WILLIAMS PRODUCTION RMT COMPANY

LINE TABLE		
LINE	BEARING	LENGTH
L1	N89°53'30"W	369.60'
L2	N00°10'28"W	428.39'
L3	N89°59'28"W	254.95'
L4	S89°56'25"W	50.00'
L5	N89°58'15"W	892.88'

NOTE:
THE PROPOSED BOTTOM HOLE FOR THIS WELL
IS LOCATED IN THE NE 1/4 SE 1/4 OF
SECTION 22, T6S, R96W, 6th P.M. AT A
DISTANCE OF 1986' FSL 943' FEL. IT BEARS
N71°34'45"W 1849.52' FROM THE PROPOSED
WELL HEAD.



LEGEND:

- └─┘ = 90° SYMBOL
- = PROPOSED WELL HEAD.
- ▲ = SECTION CORNERS LOCATED.

NAD 83 (SURFACE LOCATION)	
LATITUDE	= 39°30'22.69" (39.506303)
LONGITUDE	= 108°04'59.72" (108.083256)
STATE PLANE-(COLO. CENTRAL-NAD 83)	
N	= 1619661.616
E	= 2271208.708

PDOP = 3.2

T6S, R96W, 6th P.M.

WILLIAMS PRODUCTION RMT COMPANY

Well location, MOBIL GM 343-22 (TARGET BOTTOM HOLE), located as shown in the NE 1/4 SE 1/4 of Section 22, T6S, R96W, 6th P.M., Garfield County, Colorado.

BASIS OF ELEVATION

SPOT ELEVATION AT THE NORTHWEST CORNER OF SECTION 30, T5S, R95W, 6th P.M. TAKEN FROM THE FORKED GULCH QUADRANGLE, COLORADO, GARFIELD COUNTY, 7.5 MINUTE SERIES (TOPOGRAPHICAL MAP) PUBLISHED BY THE UNITED STATES DEPARTMENT OF THE INTERIOR, GEOLOGICAL SURVEY. SAID ELEVATION IS MARKED AS BEING 5966 FEET.

BASIS OF BEARINGS

BASIS OF BEARINGS IS A G.P.S. OBSERVATION.

NOTE:
THE PROPOSED BOTTOM HOLE BEARS N71°34'45"W 1849.52' FROM THE PROPOSED WELL HEAD WHICH IS LOCATED IN THE NW 1/4 SW 1/4 OF SECTION 23, T6S, R96W, 6th P.M. AT A DISTANCE OF 1832' FSL 811' FWL.

22

MOBIL GM 343-22
TARGET BOTTOM HOLE

LINE	BEARING	LENGTH
L1	N89°53'30"W	369.80'
L2	N00°10'28"W	428.39'
L3	N89°59'28"W	254.95'
L4	S89°56'25"W	50.00'
L6	N89°53'03"W	16.50'
L7	N00°02'54"W	589.38'
L8	S89°59'08"W	581.00'
L9	N89°53'03"W	158.40'

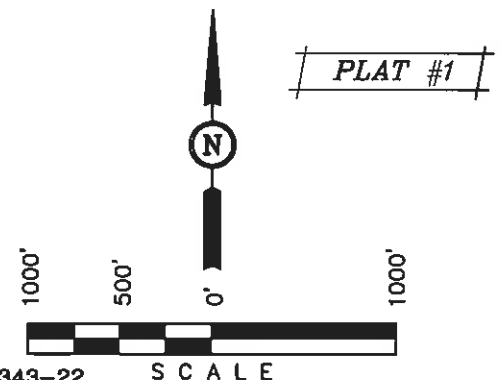
Lot 1
W.C. 1912 Brass
Cap 1.0" High
Lat: 39.502481'
Long: 108.104239'
True Position

Lot 2

Lot 3
Private Alum. Cap
Lat: 39.502453'
Long: 108.094764'

Lot 4
W.C. Alum. Cap
Lat: 39.502453'
Long: 108.086300'
1912 Brass Cap
1.6" High, Pile of
Stones
Lat: 39.502453'
Long: 108.085219'

Brass Cap
Lat: 39.501275'
Long: 108.085214'



MOBIL GM 343-22
SURFACE LOCATION

CERTIFICATE

THIS IS TO CERTIFY THAT THE ABOVE PLAT WAS PREPARED FROM FIELD NOTES OF ACTUAL SURVEYS MADE BY ME OR UNDER MY SUPERVISION AND THAT THE SAME ARE TRUE AND CORRECT TO THE BEST OF MY KNOWLEDGE AND BELIEF.

REGISTERED LAND SURVEYOR
REGISTRATION NO. 17432
STATE OF COLORADO

Rev. 02-01-11 D.R.B.

UINTAH ENGINEERING & LAND SURVEYING
85 SOUTH 200 EAST - VERNAL, UTAH 84078
(435) 789-1017

LEGEND:

- └─┘ = 90° SYMBOL
- = PROPOSED WELL HEAD.
- ▲ = SECTION CORNERS LOCATED.

NAD 83 (TARGET BOTTOM HOLE)
LATITUDE = 39°30'28.47" (39.507908)
LONGITUDE = 108°05'22.10" (108.089472)
STATE PLANE-(COLO. CENTRAL-NAD 83)
N = 1620298.000
E = 2269472.000

SCALE 1" = 1000'	DATE SURVEYED: 04-13-10	DATE DRAWN: 10-20-10
PARTY G.O. B.B. D.R.B.	REFERENCES G.L.O. PLAT	
WEATHER WARM	FILE	WILLIAMS PRODUCTION RMT COMPANY