

T6S, R96W, 6th P.M.

WILLIAMS PRODUCTION RMT COMPANY

Well location, MOBIL GM 423-23, located as shown in the NW 1/4 SW 1/4 of Section 23, T6S, R96W, 6th P.M., Garfield County, Colorado.

BASIS OF ELEVATION

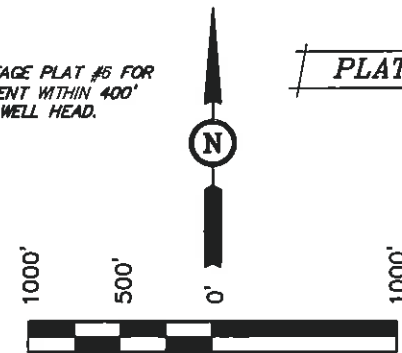
SPOT ELEVATION AT THE NORTHWEST CORNER OF SECTION 30, T5S, R95W, 6th P.M. TAKEN FROM THE FORKED GULCH QUADRANGLE, COLORADO, GARFIELD COUNTY, 7.5 MINUTE SERIES (TOPOGRAPHICAL MAP) PUBLISHED BY THE UNITED STATES DEPARTMENT OF THE INTERIOR, GEOLOGICAL SURVEY. SAID ELEVATION IS MARKED AS BEING 5966 FEET.

BASIS OF BEARINGS

BASIS OF BEARINGS IS A G.P.S. OBSERVATION.

NOTE:
SEE CURRENT FOOTAGE PLAT #6 FOR
EXISTING IMPROVEMENT WITHIN 400'
OF THE PROPOSED WELL HEAD.

PLAT #1



SCALE
CERTIFICATE

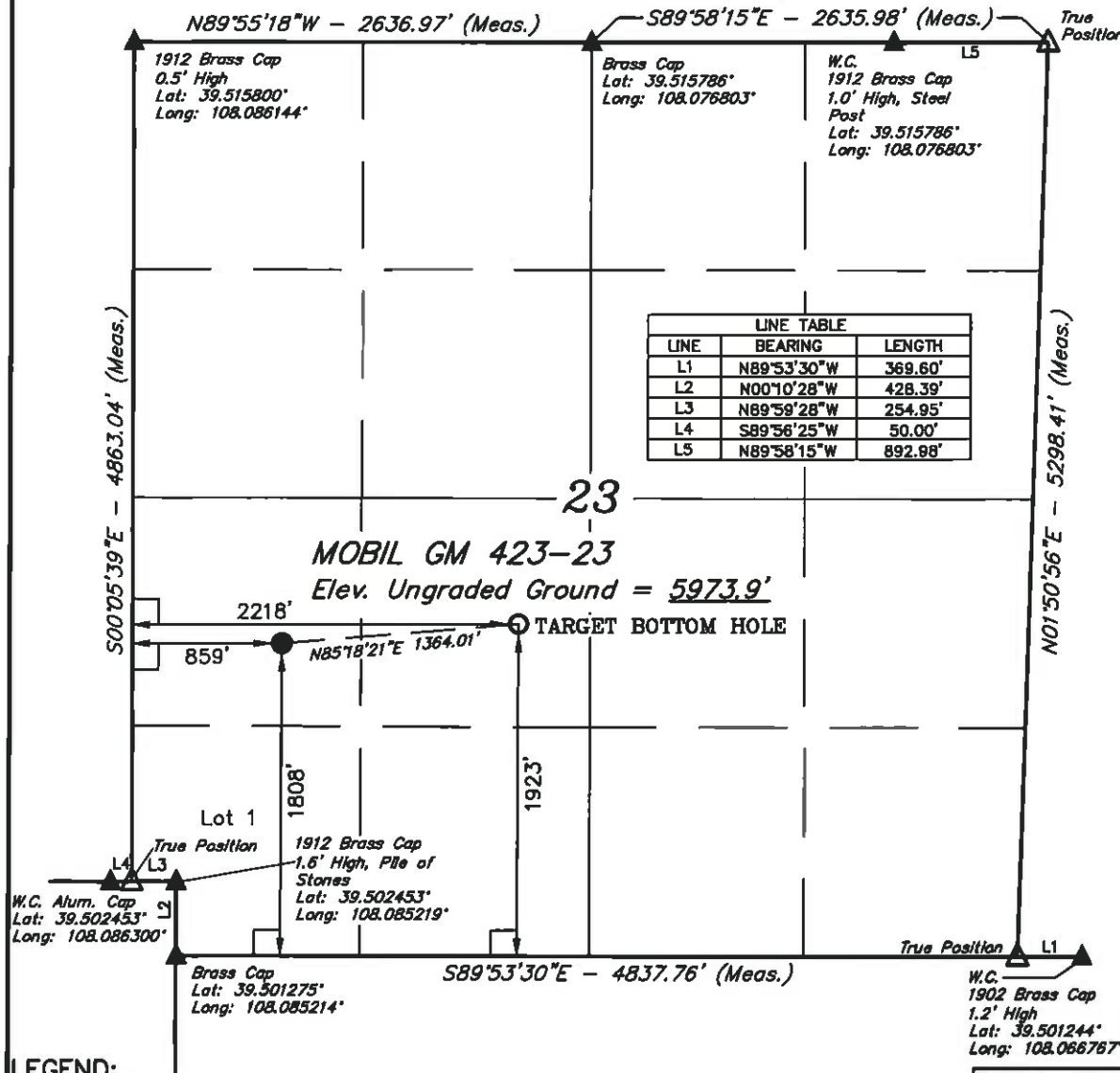
THIS IS TO CERTIFY THAT THE ABOVE PLAT WAS PREPARED AND LOCATION AS SHOWN WAS STAKED ON THE GROUND FROM FIELD NOTES OF ACTUAL SURVEYS MADE BY ME OR UNDER MY SUPERVISION AND THAT THE SAME ARE TRUE AND CORRECT TO THE BEST OF MY KNOWLEDGE AND BELIEF.

REGISTERED LAND SURVEYOR
REGISTRATION NO. 12492
STATE OF COLORADO

Revised: 02-02-11 D.R.B.

UINTAH ENGINEERING & LAND SURVEYING
86 SOUTH 200 EAST - VERNAL, UTAH 84078
(435) 789-1017

SCALE 1" = 1000'	DATE SURVEYED: 04-13-10	DATE DRAWN: 10-20-10
PARTY G.O. B.B. D.R.B.	REFERENCES G.L.O. PLAT	
WEATHER WARM	FILE WILLIAMS PRODUCTION RMT COMPANY	



NAD 83 (TARGET BOTTOM HOLE)	NAD 83 (SURFACE LOCATION)
LATITUDE = 39°30'23.55" (39.506542)	LATITUDE = 39°30'22.45" (39.506236)
LONGITUDE = 108°04'41.78" (108.078272)	LONGITUDE = 108°04'59.12" (108.083088)
STATE PLANE-(COLO. CENTRAL-NAD 83)	STATE PLANE-(COLO. CENTRAL-NAD 83)
N = 1619708.600	N = 1619836.072
E = 2272617.300	E = 2271255.657

PDOP = 3.2