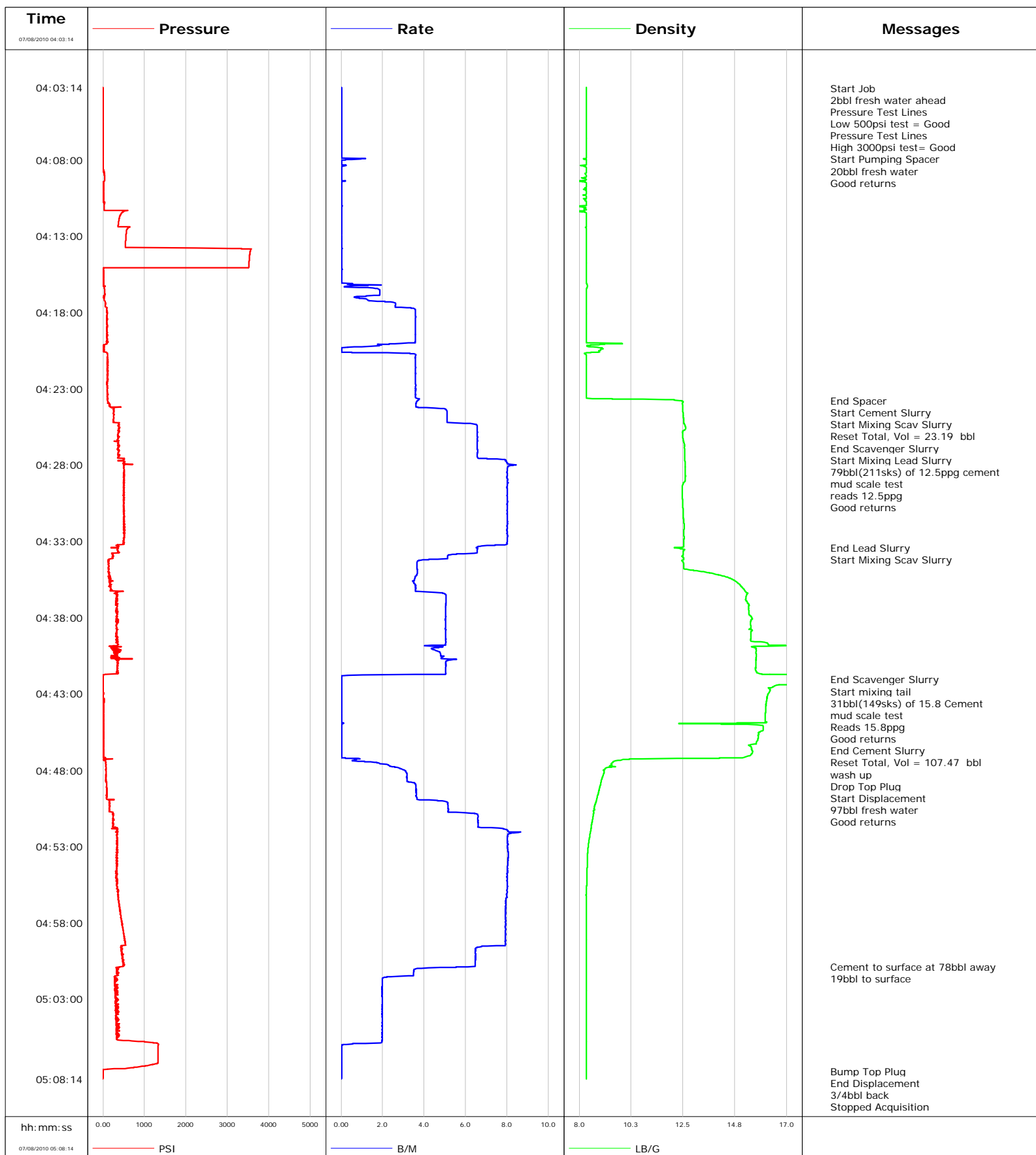


Well GMR 8-A2
Field S Parachute
Engineer Dustin C Krueger
Country United States

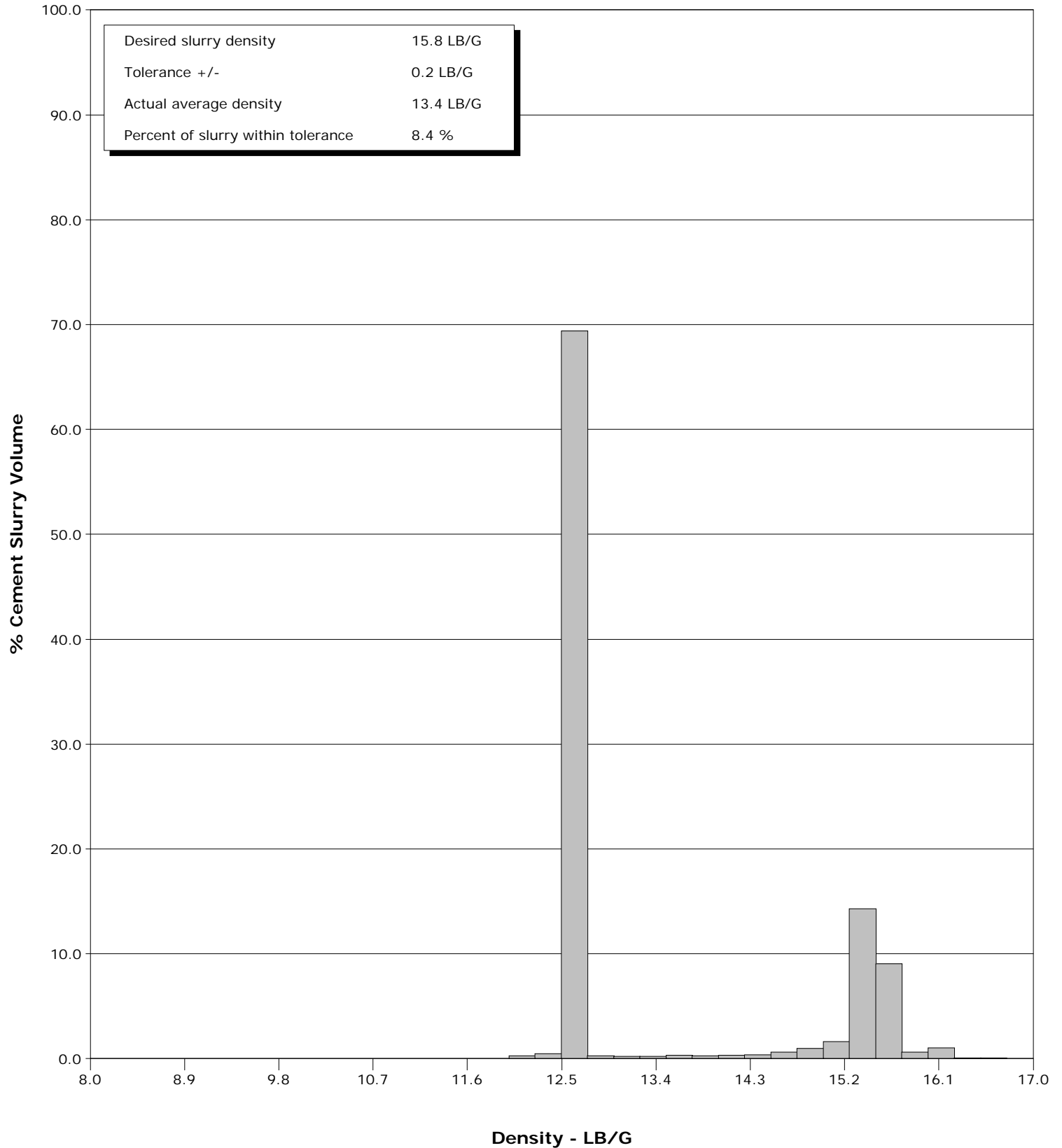
Client Encana Oil Gas
SIR No. 000347405
Job Type 1300ft 9 5/8 Surface
Job Date 07-08-10



Well GMR 8-A2
Field S Parachute
Engineer Dustin C Krueger
Country United States

Client Encana Oil Gas
SIR No. 000347405
Job Type 1300ft 9 5/8 Surface
Job Date 07-08-10

Cement Slurry - 07/08/2010 04:23:48 to 07/08/2010 04:42:21



Cementing Service Report

				Customer		Job Number		
				Encana Oil & Gas		000347405		
Well			Location (legal)		Schlumberger Location		Job Start	
GMR 8-A2 GMR 8 6A2			Mamm Creek		Grand Junctin		Jul/08/2010	
Field		Formation Name/Type		Deviation	Bit Size	Well MD	Well TVD	
S Parachute		shale		0 deg	12.3 in	1300.0 ft	1300.0 ft	
County		State/Province		BHP	BHST	BHCT	Pore Press. Gradient	
Garfield		Colorado						
Well Master		API /UWI						
0631178165								
Rig Name		Drilled For	Service Via	Casing/Liner				
NABORS M-13		Gas	Land					
				Depth, ft	Size, in	Weight, lb/ft	Grade	Thread
Offshore Zone		Well Class	Well Type	40.0	16.000	65.0	N/A	N/A
		New	Development	1300.0	9.630	36.0	K55	8RD
Drilling Fluid Type		Max. Density	Plastic Viscosity	Tubing/Drill Pipe				
Bentonite		9.00 lb/gal	35.000 cP					
				Depth,	Size,	Weight,	Grade	Thread
Service Line		Job Type						
Cementing		1300ft 9 5/8 Surface						
Max. Allowed Tub. Press		Max. Allowed Ann. Press	WH Connection	Perforations/Open Hole				
3500 psi		2200 psi	Single Cement head					
				Top,	Bottom,		No. of Shots	Total Interval
								Diameter
				Treat Down	Displacement	Packer Type	Packer Depth	
				Casing	97.0 bbl			
				Tubing Vol.	Casing Vol.	Annular Vol.	Openhole Vol.	
				0.0 bbl	100.5 bbl	76.0 bbl	179.0 bbl	
Casing/Tubing Secured		1 Hole Vol. Circulated prior to Cement		Casing Tools		Squeeze Job		
<input checked="" type="checkbox"/>		<input checked="" type="checkbox"/>						
Lift Pressure		643 psi		Shoe Type		Guide		Squeeze Type
Pipe Rotated		Pipe Reciprocated		Shoe Depth		1300.0 ft		Tool Type
<input type="checkbox"/>		<input type="checkbox"/>						
No. Centralizers		Top Plugs	Bottom Plugs	Stage Tool Type		Tool Depth		
5		1						
Cement Head Type		Single		Stage Tool Depth		Tail Pipe Size		
Job Scheduled For		Arrived on Location	Leave Location	Collar Type		Tail Pipe Depth		
Jul/08/2010 01:00		Jul/08/2010 00:45	Jul/08/2010 04:00	Float				
				Collar Depth		1255.0 ft		Sqz. Total Vol.
Date	Time 24-hr clock	Treating Pressure PSI	Flow Rate B/M	Density LB/G	Volume BBL	Message		
07/08/2010	03:42:44					Started Acquisition		
07/08/2010	03:42:49					Pre Job Safty Meeting		
07/08/2010	04:03:14	-3	0.0	8.32	0.0			
07/08/2010	04:03:17					Start Job		
07/08/2010	04:03:17	-4	0.0	8.32	0.0			
07/08/2010	04:03:22					2bbl fresh water ahead		
07/08/2010	04:03:22	-4	0.0	8.32	0.0			
07/08/2010	04:03:24					Pressure Test Lines		
07/08/2010	04:03:24	-3	0.0	8.32	0.0			
07/08/2010	04:03:27					Low 500psi test = Good		
07/08/2010	04:03:27	-3	0.0	8.32	0.0			
07/08/2010	04:04:25					Pressure Test Lines		
07/08/2010	04:04:25	-3	0.0	8.32	0.0			
07/08/2010	04:04:28					High 3000psi test= Good		
07/08/2010	04:04:28	-3	0.0	8.32	0.0			
07/08/2010	04:04:32					Start Pumping Spacer		
07/08/2010	04:04:32	-3	0.0	8.32	0.0			
07/08/2010	04:04:35					20bbl fresh water		
07/08/2010	04:04:35					Good returns		
07/08/2010	04:04:35	-3	0.0	8.32	0.0			
07/08/2010	04:07:44	-6	0.0	8.32	0.0			

Well			Field		Job Start		Customer		Job Number	
GMR 8-A2 GMR 8 6A2			S Parachute		Jul/08/2010		Encana Oil & Gas		000347405	
Date	Time 24-hr clock	Treating Pressure PSI	Flow Rate B/M	Density LB/G	Volume BBL	Message				
07/08/2010	04:17:44	106	3.5	8.31	2.9					
07/08/2010	04:22:44	105	3.6	8.31	19.0					
07/08/2010	04:23:47					End Spacer				
07/08/2010	04:23:47	114	3.7	12.46	22.8					
07/08/2010	04:23:48					Start Cement Slurry				
07/08/2010	04:23:48	117	3.7	12.46	22.9					
07/08/2010	04:23:49					Start Mixing Scav Slurry				
07/08/2010	04:23:49	117	3.7	12.50	22.9					
07/08/2010	04:23:53					Reset Total, Vol = 23.19 bbl				
07/08/2010	04:23:53	129	3.6	12.50	23.2					
07/08/2010	04:24:08					End Scavenger Slurry				
07/08/2010	04:24:08					Start Mixing Lead Slurry				
07/08/2010	04:24:08	171	3.6	12.48	24.1					
07/08/2010	04:24:20					79bbl(211sks) of 12.5ppg cement				
07/08/2010	04:24:20					mud scale test				
07/08/2010	04:24:20	271	5.0	12.49	24.9					
07/08/2010	04:24:21					reads 12.5ppg				
07/08/2010	04:24:21					Good returns				
07/08/2010	04:24:21	243	5.0	12.49	25.0					
07/08/2010	04:27:44	358	7.9	12.58	46.0					
07/08/2010	04:32:44	503	8.0	12.55	86.1					
07/08/2010	04:33:26					End Lead Slurry				
07/08/2010	04:33:26	197	6.5	12.13	91.5					
07/08/2010	04:33:27					Start Mixing Scav Slurry				
07/08/2010	04:33:27	375	6.6	12.18	91.6					
07/08/2010	04:37:44	326	5.0	15.35	110.7					
07/08/2010	04:42:03					End Scavenger Slurry				
07/08/2010	04:42:03	-1	0.0	25.00	130.7					
07/08/2010	04:42:08					Start mixing tail				
07/08/2010	04:42:08	-0	0.0	25.00	130.7					
07/08/2010	04:42:18					31bbl(149sks) of 15.8 Cement				
07/08/2010	04:42:18					mud scale test				
07/08/2010	04:42:18	-0	0.0	25.00	130.7					
07/08/2010	04:42:19					Reads 15.8ppg				
07/08/2010	04:42:19					Good returns				
07/08/2010	04:42:19	-0	0.0	25.00	130.7					
07/08/2010	04:42:21					End Cement Slurry				
07/08/2010	04:42:21	-0	0.0	20.93	130.7					
07/08/2010	04:42:32					Reset Total, Vol = 107.47 bbl				
07/08/2010	04:42:32	-1	0.0	16.43	130.7					
07/08/2010	04:42:34					wash up				
07/08/2010	04:42:34	-0	0.0	16.40	130.7					
07/08/2010	04:42:38					Drop Top Plug				
07/08/2010	04:42:38					Start Displacement				
07/08/2010	04:42:38	-0	0.0	16.22	130.7					
07/08/2010	04:42:40					97bbl fresh water				
07/08/2010	04:42:40	-1	0.0	16.26	130.7					
07/08/2010	04:42:41					Good returns				
07/08/2010	04:42:41	-1	0.0	16.26	130.7					
07/08/2010	04:42:44	-0	0.0	16.29	130.7					
07/08/2010	04:47:44	66	2.3	9.32	131.4					
07/08/2010	04:52:44	348	8.0	8.41	157.3					
07/08/2010	04:57:44	437	7.9	8.31	197.3					
07/08/2010	05:00:52					Cement to surface at 78bbl away				

Well GMR 8-A2 GMR 8 6A2			Field S Parachute		Job Start Jul/08/2010		Customer Encana Oil & Gas		Job Number 000347405	
Date	Time 24-hr clock	Treating Pressure PSI	Flow Rate B/M	Density LB/G	Volume BBL	Message				
07/08/2010	05:00:52	493	6.5	8.31	220.2					
07/08/2010	05:02:44	366	2.0	8.31	225.1					
07/08/2010	05:07:43					Bump Top Plug				
07/08/2010	05:07:43					End Displacement				
07/08/2010	05:07:43	-7	0.0	8.31	231.4					
07/08/2010	05:07:44	-7	0.0	8.31	231.4					
07/08/2010	05:07:46					3/4bbl back				
07/08/2010	05:07:46	-8	0.0	8.31	231.4					

Post Job Summary

Average Pump Rates,					Volume of Fluid Injected, bbl					
Slurry	N2	Mud	Maximum Rate		Total Slurry 110.0	Mud 0.0	Spacer 20.0	N2		
Treating Pressure Summary, psi					Breakdown Fluid					
Maximum 3000	Final 1300	Average 300	Bump Plug to 1300	Breakdown 275	Type FreshWater	Volume 273.0 bbl		Density 8.34 lb/gal		
Avg. N2 Percent		Designed Slurry Volume 110.0 bbl		Displacement 97.0 bbl		Mix Water Temp 70 degF		Cement Circulated to Surface? <input checked="" type="checkbox"/>		Volume 19.0 bbl
								Washed Thru Perfs <input type="checkbox"/>		To
Customer or Authorized Representative Danny Asuchak				Schlumberger Supervisor Dustin C Krueger				Circulation Lost <input type="checkbox"/>		Job Completed <input checked="" type="checkbox"/>
								-		-