

6/2

---

# **OXY GRAND JUNCTION EBUSINESS**

---

**Shell 797-03-31B  
GRAND VALLEY  
Garfield County , Colorado**

**Cement Surface Casing**  
**19-Nov-2010**

**Job Site Documents**

## The Road to Excellence Starts with Safety

Sold To #: 344034	Ship To #: 2820476	Quote #:	Sales Order #: 7711566
Customer: OXY GRAND JUNCTION EBUSINESS		Customer Rep: Goddeyne, Andy	
Well Name: Shell	Well #: 797-03-31B	API/UWI #: 05-045-17889	
Field: GRAND VALLEY	City (SAP): Debque	County/Parish: Garfield	State: Colorado
Lat: N 39.478 deg. OR N 39 deg. 28 min. 42.11 secs.		Long: W 108.202 deg. OR W -109 deg. 47 min. 52.57 secs.	
Contractor: H&P Drilling	Rig/Platform Name/Num: M-37		
Job Purpose: Cement Surface Casing			
Well Type: Development Well	Job Type: Cement Surface Casing		
Sales Person: DUNNING, DUSTIN	Srv Supervisor: CALDWELL, JEFFREY	MBU ID Emp #: 369111	

## Job Personnel

HES Emp Name	Exp Hrs	Emp #	HES Emp Name	Exp Hrs	Emp #	HES Emp Name	Exp Hrs	Emp #
BRUN, JUSTIN M	9	459269	CALDWELL, JEFFREY S	9	369111	SLAUGHTER, JESSE Dean	9	454315

## Equipment

HES Unit #	Distance-1 way	HES Unit #	Distance-1 way	HES Unit #	Distance-1 way	HES Unit #	Distance-1 way
10616651C	80 mile	10713212	80 mile	10741123	80 mile	10951249	80 mile
10995025	80 mile						

## Job Hours

Date	On Location Hours	Operating Hours	Date	On Location Hours	Operating Hours	Date	On Location Hours	Operating Hours
11-19-10	9	1.5						

TOTAL Total is the sum of each column separately

## Job

## Job Times

Formation Name	Formation Depth (MD)	Top	Bottom	Form Type	Job depth MD	Water Depth	Perforation Depth (MD)	From	To	Called Out	On Location	Job Started	Job Completed	Departed Loc
				BHST	1300. ft					19 - Nov - 2010	19 - Nov - 2010	19 - Nov - 2010	19 - Nov - 2010	19 - Nov - 2010
						Wk Ht Above Floor			5. ft					

## Well Data

Description	New / Used	Max pressure psig	Size in	ID in	Weight lbm/ft	Thread	Grade	Top MD ft	Bottom MD ft	Top TVD ft	Bottom TVD ft
-------------	------------	-------------------	---------	-------	---------------	--------	-------	-----------	--------------	------------	---------------

Sales/Rental/3<sup>rd</sup> Party (HES)

Description	Qty	Qty uom	Depth	Supplier
PLUG,CMTG,TOP,9 5/8,HWE,8.16 MIN/9.06 MA	1	EA		
R/A DENSOMETER W/CHART RECORDER,/JOB,ZI	1	JOB		
PORT. DATA ACQUIS. W/OPTICEM RT W/HES	1	EA		
ADC (AUTO DENSITY CTRL) SYS, /JOB,ZI	1	JOB		

## Tools and Accessories

Type	Size	Qty	Make	Depth	Type	Size	Qty	Make	Depth	Type	Size	Qty	Make
Guide Shoe					Packer					Top Plug	9.625	1	
Float Shoe					Bridge Plug					Bottom Plug			
Float Collar					Retainer					SSR plug set			
Insert Float										Plug Container	9.625	1	
Stage Tool										Centralizers			

## Miscellaneous Materials

Gelling Agt	Conc	Surfactant	Conc	Acid Type	Qty	Conc	%
Treatment Fld	Conc	Inhibitor	Conc	Sand Type	Size	Qty	

## Cementing Job Summary

Fluid Data									
Stage/Plug #: 1									
Fluid #	Stage Type	Fluid Name	Qty	Qty uom	Mixing Density lbm/gal	Yield ft <sup>3</sup> /sk	Mix Fluid Gal/sk	Rate bbl/min	Total Mix Fluid Gal/sk
1	Water Spacer		20	bbl	8.33	.0	.0	3.0	
2	Gel Water Spacer		20	bbl	.	.0	.0	5.0	
3	Water Spacer		20	bbl	.	.0	.0	5.0	
4	Lead Cement	VERSACEM (TM) SYSTEM (452010)	205	sacks	12.3	2.38	13.75	5.0	13.75
		13.75 Gal FRESH WATER							
5	Tail Cement	VERSACEM (TM) SYSTEM (452010)	82	sacks	14.2	1.43	6.8	5.0	6.8
		6.8 Gal FRESH WATER							
6	Displacement		96.3	bbl	.	.0	.0	5.0	
Calculated Values		Pressures		Volumes					
Displacement	96.3	Shut In: Instant		Lost Returns	0	Cement Slurry	98.9	Pad	
Top Of Cement	SURFACE	5 Min		Cement Returns	20	Actual Displacement	96.3	Treatment	
Frac Gradient		15 Min		Spacers	60	Load and Breakdown		Total Job	255.2
Rates									
Circulating	5	Mixing	5	Displacement	5	Avg. Job	5		
Cement Left In Pipe	Amount	54.1 ft	Reason	Shoe Joint					
Frac Ring # 1 @	ID	Frac ring # 2 @	ID	Frac Ring # 3 @	ID	Frac Ring # 4 @	ID		
The Information Stated Herein Is Correct				Customer Representative Signature					

**The Road to Excellence Starts with Safety**

Sold To #: 344034	Ship To #: 2820476	Quote #:	Sales Order #: 7711566
Customer: OXY GRAND JUNCTION EBUSINESS	Customer Rep: Goddeyne, Andy		
Well Name: Shell	Well #: 797-03-31B	API/UWI #: 05-045-17889	
Field: GRAND VALLEY	City (SAP): Debque	County/Parish: Garfield	State: Colorado
<b>Legal Description:</b>			
Lat: N 39.478 deg. OR N 39 deg. 28 min. 42.11 secs.		Long: W 108.202 deg. OR W -109 deg. 47 min. 52.57 secs.	
Contractor: H&P Drilling	Rig/Platform Name/Num: M-37		
Job Purpose: Cement Surface Casing	Ticket Amount:		
Well Type: Development Well	Job Type: Cement Surface Casing		
Sales Person: DUNNING, DUSTIN	Srvc Supervisor: CALDWELL, JEFFREY	MBU ID Emp #: 369111	

Activity Description	Date/Time	Cht #	Rate bbl/min	Volume bbl		Pressure psig		Comments
				Stage	Total	Tubing	Casing	
Call Out	11/19/2010 02:00							ELITE#4
Pre-Convoy Safety Meeting	11/19/2010 03:40							ALL PERSONNEL ASSOCIATED WITH JOB ATTENDED.
Crew Leave Yard	11/19/2010 04:00							
Arrive At Loc	11/19/2010 07:00							CASING WAS STILL BEING RUN.
Safety Meeting	11/19/2010 07:15							ALL PERSONNEL ASSOCIATED WITH JOB ATTENDED.
Rig-Up Equipment	11/19/2010 07:30							
Pre-Job Safety Meeting	11/19/2010 11:45							ALL PERSONNEL ASSOCIATED WITH JOB ATTENDED.
Start Job	11/19/2010 12:17							TD:1325', TP:1300', SJ:54.1', 12 1/4" OH, 9.4 PPG MUD.
Prime Pumps	11/19/2010 12:18		1.5	2			48.0	H2O
Test Lines	11/19/2010 12:21							TEST GOOD.
Pump Spacer 1	11/19/2010 12:25		3	20			64.0	H2O
Pump Spacer 2	11/19/2010 12:32							GELLED SPACER. 5 GALLONS.
Pump Spacer 1	11/19/2010 12:37							H2O
Pump Lead Cement	11/19/2010 12:41		5	83			196.0	205 SKS 12.3 PPG 2.38 CUFT/SAK 13.75 GAL/SAK
Pump Tail Cement	11/19/2010 12:58		5	15.9			186.0	82 SKS 14.2 PPG 1.43 CUFT/SAK 6.8 PPG

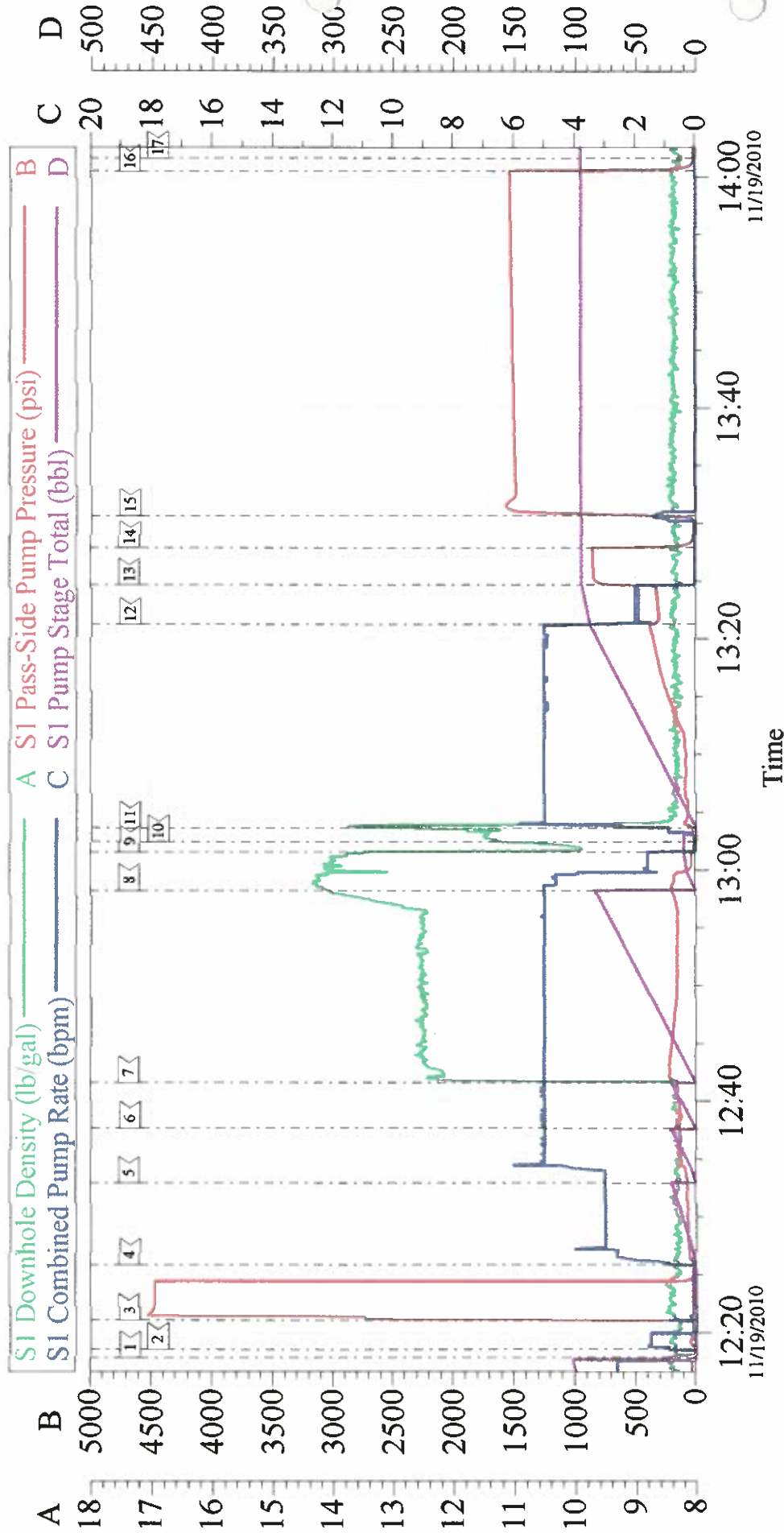


## Cementing Job Log

Activity Description	Date/Time	Cht #	Rate bbl/min	Volume bbl		Pressure psig		Comments
				Stage	Total	Tubing	Casing	
Shutdown	11/19/2010 13:01							
Drop Top Plug	11/19/2010 13:02							PLUG AWAY
Pump Displacement	11/19/2010 13:03		5	96.3			350.0	H2O
Slow Rate	11/19/2010 13:21		2	87			314.0	
Bump Plug	11/19/2010 13:24		2	96.3			847.0	PLUG BUMPED
Check Floats	11/19/2010 13:27							FLOATS HELD, 1/2 BBL BACK. GOOD CIRCULATION THROUGH OUT JOB.
Other	11/19/2010 13:30							HOLD 1500 PSI ON CASING.
End Job	11/19/2010 14:01							20 BBLS OF CEMENT TO SURFACE.
Post-Job Safety Meeting (Pre Rig-Down)	11/19/2010 14:05							ALL PERSONNEL ASSOCIATED WITH JOB ATTENDED.
Rig-Down Equipment	11/19/2010 14:15							
Crew Leave Location	11/19/2010 16:00							THANK YOU FOR CHOOSING HALLIBURTON, JEFF CALDWELL AND CREW.

# OXY

## Shell 797-03-31B Surface



Customer:	Oxy	Job Date:	19-Nov-2010	Sales Order #:	7711566
Well Description:	Shell 797-03-31B	Job Type:	Surface	ADC Used:	Yes
Company Rep:	Andy Goddeyne	Cement Supervisor:	Jeff Caldwell	Elite #:	4/Justin Brun