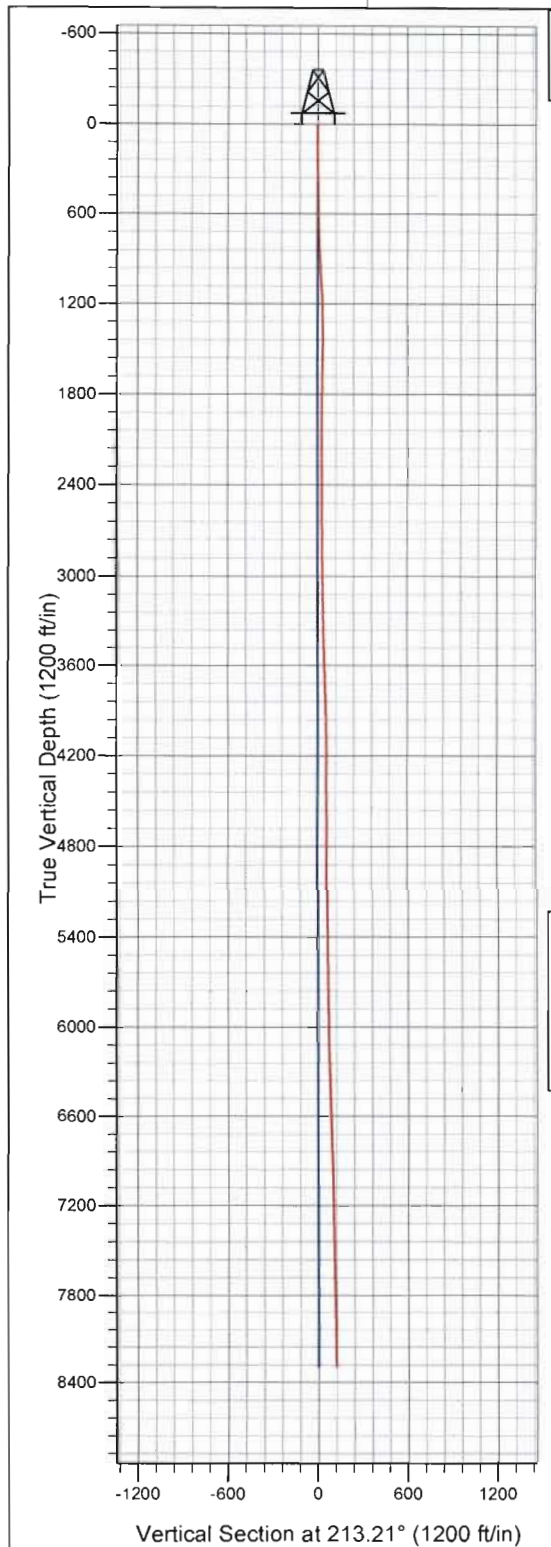


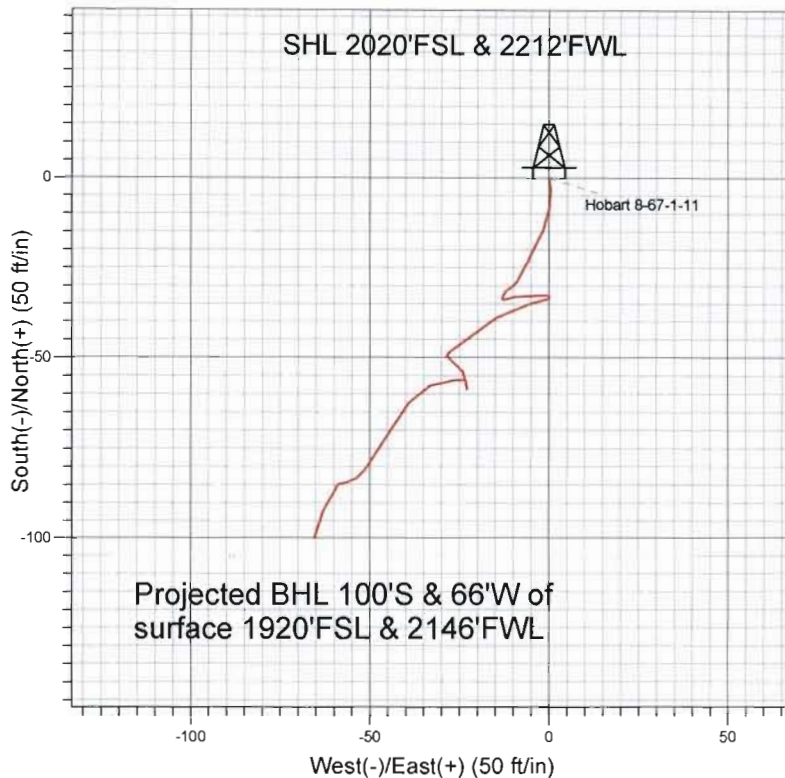
Well Name: **Hobart 8-67-1-11**

Surface Location: Hobart 8-67-1-11 Pad Sec.1-T8N-R67W  
North American Datum 1983 US State Plane 1983 Wyoming Eastern Zone  
Ground Elevation: 5348.0  
+N/-S +E/-W Northing Easting Latitude Longitude  
0.0 0.0 68282.39 746553.17 40° 41' 13.106 N 104° 50' 26.650 W  
Original Well Elev WELL @ 5361.0ft (Original Well Elev)

Slot



## Anadarko, Laramie County WY



### LEGEND

- ✕ Hobart 8-67-1-11, Wellbore #1, Design #1 V0
- Wellbore #1

## Final Survey Plot

Projected Final Survey -  
8295'MD & 8293'TVD @ 100' VS  
0.8 deg Inc 202.2 deg AZ

Project: SEC.1-T8N-R67W  
Site: Hobart 8-67-1-11 Pad Sec.1-T8N-R67W  
Well: Hobart 8-67-1-11  
Plan: Wellbore #1



## **Anadarko, Laramie County WY**

**SEC.1-T8N-R67W**

**Hobart 8-67-1-11 Pad Sec.1-T8N-R67W**

**Hobart 8-67-1-11**

**Wellbore #1**

**Design: Wellbore #1**

## **Survey Report - Geographic**

**19 January, 2011**

|                  |                                     |                                     |                                      |
|------------------|-------------------------------------|-------------------------------------|--------------------------------------|
| <b>Company:</b>  | Anadarko, Laramie County WY         | <b>Local Co-ordinate Reference:</b> | Well Hobart 8-67-1-11                |
| <b>Project:</b>  | SEC.1-T8N-R67W                      | <b>TVD Reference:</b>               | WELL @ 5361.0ft (Original Well Elev) |
| <b>Site:</b>     | Hobart 8-67-1-11 Pad Sec.1-T8N-R67W | <b>MD Reference:</b>                | WELL @ 5361.0ft (Original Well Elev) |
| <b>Well:</b>     | Hobart 8-67-1-11                    | <b>North Reference:</b>             | True                                 |
| <b>Wellbore:</b> | Wellbore #1                         | <b>Survey Calculation Method:</b>   | Minimum Curvature                    |
| <b>Design:</b>   | Wellbore #1                         | <b>Database:</b>                    | Landmark                             |

|                    |   |                      |                             |
|--------------------|---|----------------------|-----------------------------|
| <b>Project</b>     | SEC.1-T8N-R67W, Laramie County, Wyoming |                      |                             |
| <b>Map System:</b> | US State Plane 1983                     | <b>System Datum:</b> | Mean Sea Level              |
| <b>Geo Datum:</b>  | North American Datum 1983               |                      | Using Well Reference Point  |
| <b>Map Zone:</b>   | Wyoming Eastern Zone                    |                      | Using geodetic scale factor |

|                       |                                     |              |               |                   |                   |
|-----------------------|-------------------------------------|--------------|---------------|-------------------|-------------------|
| Site                  | Hobart 8-67-1-11 Pad Sec.1-T8N-R67W |              |               |                   |                   |
| Site Position:        |                                     | Northing:    | 68,282.39 ft  | Latitude:         | 40° 41' 13.106 N  |
| From:                 | Lat/Long                            | Easting:     | 746,553.17 ft | Longitude:        | 104° 50' 26.650 W |
| Position Uncertainty: | 0.0 ft                              | Slot Radius: | "             | Grid Convergence: | 0.21 °            |

|                      |                  |        |                     |               |               |                   |
|----------------------|------------------|--------|---------------------|---------------|---------------|-------------------|
| Well                 | Hobart 8-67-1-11 |        |                     |               |               |                   |
| Well Position        | +N/-S            | 0.0 ft | Northing:           | 68,282.39 ft  | Latitude:     | 40° 41' 13.106 N  |
|                      | +E/-W            | 0.0 ft | Easting:            | 746,553.17 ft | Longitude:    | 104° 50' 26.650 W |
| Position Uncertainty |                  | 0.0 ft | Wellhead Elevation: | ft            | Ground Level: | 5,348.0 ft        |

|                  |                   |                    |                        |                      |                            |
|------------------|-------------------|--------------------|------------------------|----------------------|----------------------------|
| <b>Wellbore</b>  | Wellbore #1       |                    |                        |                      |                            |
| <b>Magnetics</b> | <b>Model Name</b> | <b>Sample Date</b> | <b>Declination (°)</b> | <b>Dip Angle (°)</b> | <b>Field Strength (nT)</b> |
|                  | IGRF2010          | 1/12/2011          | 8.99                   | 67.28                | 53,313                     |

|                          |                              |                   |                   |                      |     |
|--------------------------|------------------------------|-------------------|-------------------|----------------------|-----|
| <b>Design</b>            | Wellbore #1                  |                   |                   |                      |     |
| <b>Audit Notes:</b>      |                              |                   |                   |                      |     |
| <b>Version:</b>          | 1.0                          | <b>Phase:</b>     | ACTUAL            | <b>Tie On Depth:</b> | 0.0 |
| <b>Vertical Section:</b> | <b>Depth From (TVD) (ft)</b> | <b>+N/-S (ft)</b> | <b>+E/-W (ft)</b> | <b>Direction (°)</b> |     |
|                          | 0.0                          | 0.0               | 0.0               | 213.21               |     |

|                       |                |                          |                  |                    |  |
|-----------------------|----------------|--------------------------|------------------|--------------------|--|
| <b>Survey Program</b> | <b>Date</b>    | 1/19/2011                |                  |                    |  |
| <b>From (ft)</b>      | <b>To (ft)</b> | <b>Survey (Wellbore)</b> | <b>Tool Name</b> | <b>Description</b> |  |
| 117.0                 | 8,295.0        | Survey #1 (Wellbore #1)  |                  |                    |  |

# **ENSIGN** **Directional**

## Survey Report - Geographic

**Company:** Anadarko, Laramie County WY  
**Project:** SEC.1-T8N-R67W  
**Site:** Hobart 8-67-1-11 Pad Sec.1-T8N-R67W  
**Well:** Hobart 8-67-1-11  
**Wellbore:** Wellbore #1  
**Design:** Wellbore #1

**Local Co-ordinate Reference:** Well Hobart 8-67-1-11  
**TVD Reference:** WELL @ 5361.0ft (Original Well Elev)  
**MD Reference:** WELL @ 5361.0ft (Original Well Elev)  
**North Reference:** True  
**Survey Calculation Method:** Minimum Curvature  
**Database:** Landmark

### Survey

| Measured Depth (ft) | Inclination (°) | Azimuth (°) | Vertical Depth (ft) | +N/-S (ft) | +E/-W (ft) | Map Northing (ft) | Map Easting (ft) | Latitude         | Longitude         |
|---------------------|-----------------|-------------|---------------------|------------|------------|-------------------|------------------|------------------|-------------------|
| 0.0                 | 0.00            | 0.00        | 0.0                 | 0.0        | 0.0        | 68,282.39         | 746,553.17       | 40° 41' 13.106 N | 104° 50' 26.650 W |
| 117.0               | 0.30            | 148.40      | 117.0               | -0.3       | 0.2        | 68,282.13         | 746,553.33       | 40° 41' 13.104 N | 104° 50' 26.648 W |
| 632.0               | 1.60            | 186.50      | 631.9               | -8.6       | 0.1        | 68,273.83         | 746,553.26       | 40° 41' 13.022 N | 104° 50' 26.649 W |
| 1,006.0             | 3.10            | 209.80      | 1,005.6             | -22.5      | -5.6       | 68,259.85         | 746,547.69       | 40° 41' 12.884 N | 104° 50' 26.722 W |
| 1,105.0             | 3.30            | 206.40      | 1,104.4             | -27.4      | -8.2       | 68,254.97         | 746,545.11       | 40° 41' 12.836 N | 104° 50' 26.756 W |
| 1,201.0             | 1.90            | 244.70      | 1,200.4             | -30.5      | -10.8      | 68,251.80         | 746,542.46       | 40° 41' 12.805 N | 104° 50' 26.790 W |
| 1,296.0             | 2.00            | 199.80      | 1,295.3             | -32.8      | -12.8      | 68,249.56         | 746,540.48       | 40° 41' 12.782 N | 104° 50' 26.816 W |
| 1,391.0             | 1.70            | 67.20       | 1,390.3             | -33.8      | -12.1      | 68,248.55         | 746,541.22       | 40° 41' 12.772 N | 104° 50' 26.806 W |
| 1,486.0             | 1.10            | 87.50       | 1,485.3             | -33.2      | -9.9       | 68,249.14         | 746,543.43       | 40° 41' 12.778 N | 104° 50' 26.778 W |
| 1,942.0             | 0.80            | 84.20       | 1,941.2             | -32.7      | -2.3       | 68,249.68         | 746,550.97       | 40° 41' 12.783 N | 104° 50' 26.680 W |
| 2,449.0             | 0.40            | 221.50      | 2,448.2             | -33.7      | 0.0        | 68,248.72         | 746,553.32       | 40° 41' 12.774 N | 104° 50' 26.649 W |
| 2,913.0             | 1.00            | 269.20      | 2,912.1             | -34.9      | -5.1       | 68,247.44         | 746,548.20       | 40° 41' 12.761 N | 104° 50' 26.716 W |
| 3,420.0             | 1.50            | 232.70      | 3,419.0             | -39.0      | -14.8      | 68,243.32         | 746,538.51       | 40° 41' 12.721 N | 104° 50' 26.842 W |
| 3,927.0             | 2.00            | 235.00      | 3,925.8             | -48.1      | -27.3      | 68,234.18         | 746,526.02       | 40° 41' 12.631 N | 104° 50' 27.004 W |
| 4,054.0             | 1.70            | 123.50      | 4,052.8             | -50.4      | -27.6      | 68,231.86         | 746,525.79       | 40° 41' 12.608 N | 104° 50' 27.008 W |
| 4,456.0             | 1.20            | 184.40      | 4,454.6             | -57.9      | -22.9      | 68,224.39         | 746,530.46       | 40° 41' 12.534 N | 104° 50' 26.947 W |
| 4,590.0             | 0.80            | 18.00       | 4,588.6             | -58.4      | -22.7      | 68,223.88         | 746,530.65       | 40° 41' 12.529 N | 104° 50' 26.945 W |
| 5,096.0             | 1.10            | 255.20      | 5,094.6             | -56.3      | -26.3      | 68,225.99         | 746,527.03       | 40° 41' 12.550 N | 104° 50' 26.992 W |
| 5,573.0             | 0.60            | 262.80      | 5,571.5             | -57.8      | -33.3      | 68,224.48         | 746,520.14       | 40° 41' 12.535 N | 104° 50' 27.081 W |
| 6,082.0             | 1.20            | 216.50      | 6,080.5             | -62.4      | -39.1      | 68,219.84         | 746,514.34       | 40° 41' 12.490 N | 104° 50' 27.157 W |
| 6,557.0             | 1.50            | 212.20      | 6,555.4             | -71.7      | -45.3      | 68,210.56         | 746,508.10       | 40° 41' 12.398 N | 104° 50' 27.238 W |
| 6,906.0             | 2.00            | 214.80      | 6,904.2             | -80.5      | -51.2      | 68,201.67         | 746,502.23       | 40° 41' 12.311 N | 104° 50' 27.315 W |
| 7,160.0             | 1.20            | 266.90      | 7,158.1             | -84.3      | -56.4      | 68,197.87         | 746,497.05       | 40° 41' 12.273 N | 104° 50' 27.382 W |
| 7,322.0             | 0.70            | 236.10      | 7,320.1             | -85.0      | -58.9      | 68,197.22         | 746,494.54       | 40° 41' 12.267 N | 104° 50' 27.415 W |
| 7,824.0             | 1.30            | 194.90      | 7,822.0             | -92.2      | -63.0      | 68,189.99         | 746,490.56       | 40° 41' 12.196 N | 104° 50' 27.467 W |
| 8,242.0             | 0.80            | 202.20      | 8,239.9             | -99.5      | -65.3      | 68,182.70         | 746,488.26       | 40° 41' 12.124 N | 104° 50' 27.497 W |
| 8,295.0             | 0.80            | 202.20      | 8,292.9             | -100.1     | -65.6      | 68,182.01         | 746,487.99       | 40° 41' 12.117 N | 104° 50' 27.501 W |

Checked By:

*Shirley Foreman*

Approved By:

*Jim Carter*

Date:

*1/19/2011*