

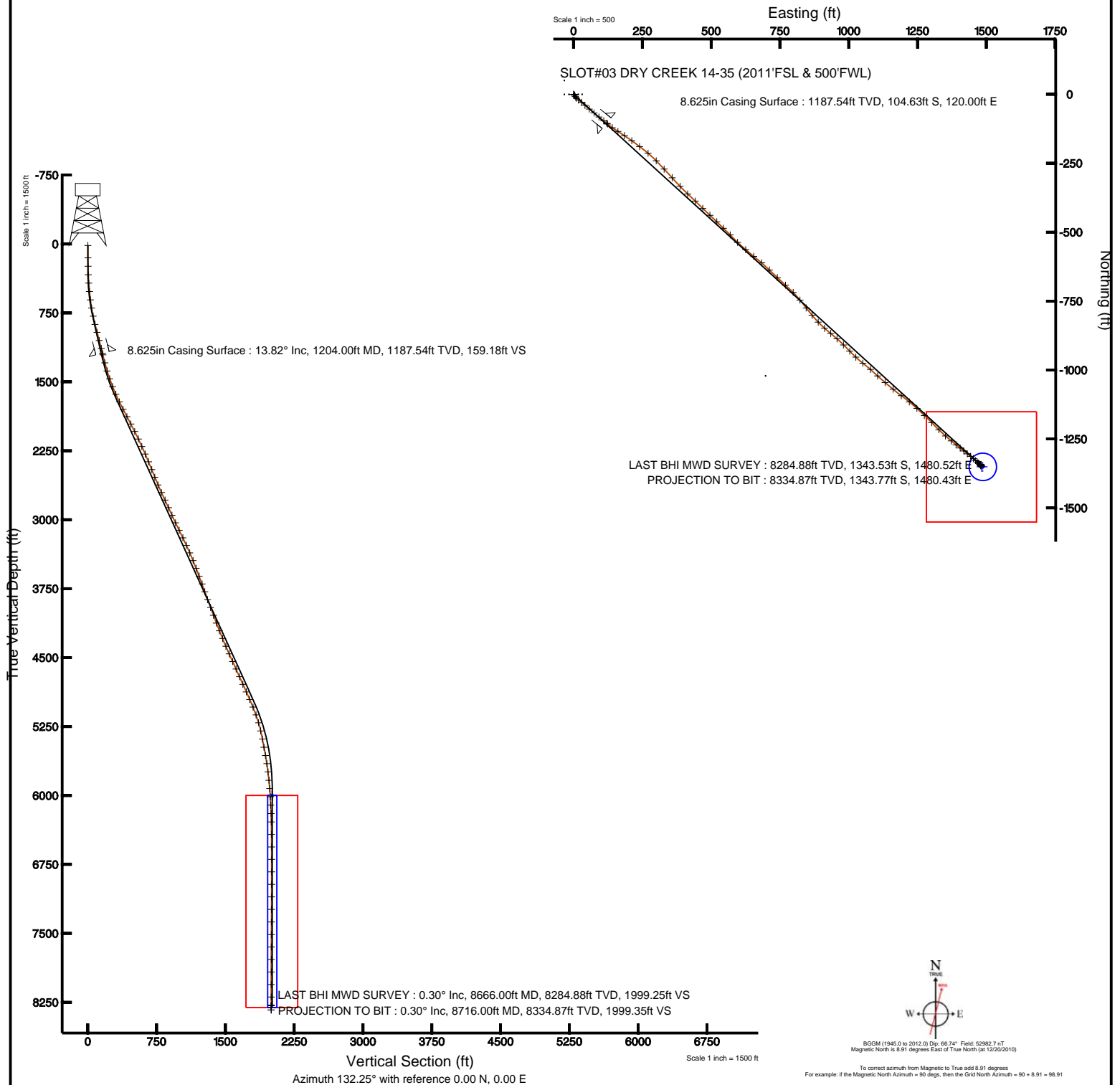


KERR MCGEE OIL & GAS ONSHORE LP

Location: COLORADO Slot: SLOT#03 DRY CREEK 14-35 (2011'FSL & 500'FWL)
Field: WELD COUNTY (KERR MCGEE) Well: DRY CREEK 14-35
Facility: SEC.35-T1N-R67W Wellbore: DRY CREEK 14-35 PWB



Plot reference wellpath is DRY CREEK 14-35 (REV-A.0) PWP	
True vertical depths are referenced to XTREME 12 (RKB)	Grid System: NAD83 / Lambert Colorado State Planes, Northern Zone (501), US feet
Measured depths are referenced to XTREME 12 (RKB)	North Reference: True north
XTREME 12 (RKB) to Mean Sea Level: 5044 feet	Scale: True distance
Mean Sea Level to Mud line (Facility: SEC.35-T1N-R67W): 0 feet	Depths are in feet
Coordinates are in feet referenced to Slot	Created by: cookdarn on 2/6/2011





Actual Wellpath Report

DRY CREEK 14-35 AWP

Page 1 of 5



INTEQ

REFERENCE WELLPATH IDENTIFICATION

Operator	KERR MCGEE OIL & GAS ONSHORE LP	Slot	SLOT#03 DRY CREEK 14-35 (2011'FSL & 500'FWL)
Area	COLORADO	Well	DRY CREEK 14-35
Field	WELD COUNTY (KERR MCGEE)	Wellbore	DRY CREEK 14-35 AWB
Facility	SEC.35-T1N-R67W		

REPORT SETUP INFORMATION

Projection System	NAD83 / Lambert Colorado State Planes, Northern Zone (501), US feet	Software System	WellArchitect® 2.0
North Reference	True	User	Cookdanm
Scale	0.999966	Report Generated	2/6/2011 at 9:56:08 PM
Convergence at slot	0.41° East	Database/Source file	Denver Server/DRY_CREEK_14-35_AWB.xml

WELLPATH LOCATION

	Local coordinates		Grid coordinates		Geographic coordinates	
	North[ft]	East[ft]	Easting[USft]	Northing[USft]	Latitude	Longitude
Slot Location	0.00	33.62	3177779.78	1245632.23	40°00'21.240"N	104°51'55.296"W
Facility Reference Pt			3177746.16	1245631.99	40°00'21.240"N	104°51'55.728"W
Field Reference Pt			3197771.84	1268891.29	40°04'09.600"N	104°47'36.000"W

WELLPATH DATUM

Calculation method	Minimum curvature	XTREME 12 (RKB) to Facility Vertical Datum	5044.00ft
Horizontal Reference Pt	Slot	XTREME 12 (RKB) to Mean Sea Level	5044.00ft
Vertical Reference Pt	XTREME 12 (RKB)	Facility Vertical Datum to Mud Line (Facility)	0.00ft
MD Reference Pt	XTREME 12 (RKB)	Section Origin	N 0.00, E 0.00 ft
Field Vertical Reference	Mean Sea Level	Section Azimuth	132.25°



Actual Wellpath Report

DRY CREEK 14-35 AWP

Page 2 of 5



INTEQ

REFERENCE WELLPATH IDENTIFICATION			
Operator	KERR MCGEE OIL & GAS ONSHORE LP	Slot	SLOT#03 DRY CREEK 14-35 (2011'FSL & 500'FWL)
Area	COLORADO	Well	DRY CREEK 14-35
Field	WELD COUNTY (KERR MCGEE)	Wellbore	DRY CREEK 14-35 AWB
Facility	SEC.35-T1N-R67W		

WELLPATH DATA (91 stations) † = interpolated/extrapolated station								
MD [ft]	Inclination [°]	Azimuth [°]	TVD [ft]	Vert Sect [ft]	North [ft]	East [ft]	DLS [°/100ft]	Comments
0.00†	0.000	83.100	0.00	0.00	0.00	0.00	0.00	
15.00	0.000	83.100	15.00	0.00	0.00	0.00	0.00	
150.00	0.600	83.100	150.00	0.46	0.08	0.70	0.44	
242.00	1.000	142.200	241.99	1.57	-0.49	1.67	0.94	
334.00	2.700	151.300	333.94	4.41	-3.03	3.20	1.87	
425.00	4.100	153.800	424.78	9.46	-7.83	5.67	1.55	
517.00	5.600	137.300	516.45	16.99	-14.08	10.17	2.21	
608.00	7.500	127.400	606.85	27.33	-20.95	17.90	2.42	
698.00	9.500	126.400	695.86	40.57	-28.92	28.54	2.23	
789.00	11.900	133.000	785.27	57.43	-39.78	41.45	2.96	
880.00	14.000	129.900	873.96	77.81	-53.24	56.76	2.43	
970.00	14.900	129.500	961.11	100.25	-67.58	74.04	1.01	
1061.00	14.800	128.500	1049.07	123.53	-82.26	92.16	0.30	
1149.00	14.500	128.500	1134.21	145.74	-96.12	109.58	0.34	
1222.00	13.600	130.600	1205.02	163.44	-107.39	123.25	1.42	
1313.00	14.300	126.400	1293.34	185.31	-121.02	140.42	1.35	
1404.00	17.200	121.400	1380.92	209.71	-134.71	160.96	3.52	
1494.00	19.600	122.500	1466.31	237.66	-149.75	185.05	2.69	
1585.00	21.800	127.800	1551.44	269.56	-168.31	211.28	3.17	
1676.00	24.200	125.700	1635.20	304.94	-189.56	239.78	2.79	
1767.00	26.600	130.200	1717.41	343.84	-213.60	270.50	3.38	
1857.00	26.800	135.500	1797.82	384.24	-241.08	300.11	2.65	
1948.00	27.800	136.900	1878.69	425.87	-271.21	328.99	1.31	
2039.00	28.500	136.900	1958.92	468.66	-302.55	358.33	0.77	
2130.00	26.700	138.000	2039.56	510.65	-333.60	386.84	2.06	
2221.00	24.900	132.300	2121.50	550.16	-361.69	414.70	3.37	
2311.00	24.700	132.700	2203.20	587.91	-387.20	442.53	0.29	
2402.00	24.300	136.500	2286.01	625.59	-413.67	469.39	1.79	
2493.00	22.600	130.900	2369.50	661.75	-438.71	495.50	3.08	
2584.00	21.900	136.200	2453.74	696.17	-462.41	520.47	2.33	
2675.00	21.600	132.300	2538.26	729.85	-485.93	544.61	1.62	
2765.00	23.400	136.000	2621.41	764.26	-509.94	569.28	2.54	
2856.00	26.100	134.400	2704.05	802.30	-536.95	596.14	3.06	
2947.00	25.400	129.900	2786.02	841.81	-563.48	625.41	2.28	
3038.00	24.300	129.500	2868.59	880.01	-587.91	654.83	1.22	
3128.00	24.400	128.800	2950.59	917.06	-611.33	683.61	0.34	
3219.00	25.400	136.200	3033.15	955.30	-637.21	711.78	3.59	
3310.00	26.900	132.000	3114.84	995.37	-665.07	740.59	2.62	
3401.00	25.600	133.000	3196.45	1035.61	-692.25	770.26	1.51	
3492.00	24.400	134.100	3278.92	1074.06	-718.74	798.14	1.41	
3582.00	24.500	141.800	3360.87	1111.05	-746.35	823.04	3.54	
3673.00	22.700	141.800	3444.26	1146.98	-774.98	845.57	1.98	
3764.00	21.300	140.800	3528.63	1180.64	-801.59	866.87	1.59	
3855.00	21.700	135.500	3613.31	1213.78	-826.40	889.11	2.18	
3946.00	19.500	132.000	3698.49	1245.77	-848.57	912.20	2.77	



Actual Wellpath Report

DRY CREEK 14-35 AWP

Page 3 of 5



INTEQ

REFERENCE WELLPATH IDENTIFICATION

Operator	KERR MCGEE OIL & GAS ONSHORE LP	Slot	SLOT#03 DRY CREEK 14-35 (2011'FSL & 500'FWL)
Area	COLORADO	Well	DRY CREEK 14-35
Field	WELD COUNTY (KERR MCGEE)	Wellbore	DRY CREEK 14-35 AWB
Facility	SEC.35-T1N-R67W		

WELLPATH DATA (91 stations)

MD [ft]	Inclination [°]	Azimuth [°]	TVD [ft]	Vert Sect [ft]	North [ft]	East [ft]	DLS [°/100ft]	Comments
4036.00	18.500	128.100	3783.59	1275.04	-867.43	934.60	1.80	
4127.00	20.200	132.000	3869.45	1305.15	-886.85	957.64	2.35	
4218.00	21.400	134.800	3954.52	1337.45	-909.06	981.09	1.71	
4309.00	19.700	135.200	4039.72	1369.35	-931.65	1003.68	1.87	
4399.00	20.800	133.700	4124.16	1400.48	-953.45	1025.92	1.35	
4490.00	22.700	127.800	4208.69	1434.14	-975.38	1051.49	3.18	
4581.00	23.300	130.900	4292.45	1469.64	-997.93	1078.96	1.49	
4672.00	22.600	133.700	4376.25	1505.12	-1021.79	1105.21	1.42	
4763.00	24.200	129.500	4459.77	1541.23	-1045.74	1132.25	2.54	
4854.00	25.100	129.500	4542.48	1579.14	-1069.88	1161.53	0.99	
4944.00	24.600	127.100	4624.15	1616.87	-1093.32	1191.20	1.25	
5035.00	23.200	128.100	4707.34	1653.61	-1115.81	1220.42	1.60	
5126.00	23.800	133.000	4790.80	1689.85	-1139.40	1247.96	2.25	
5217.00	24.600	133.700	4873.81	1727.15	-1165.00	1275.08	0.93	
5307.00	24.400	134.500	4955.70	1764.45	-1190.98	1301.88	0.43	
5398.00	22.800	135.200	5039.09	1800.84	-1216.66	1327.71	1.78	
5489.00	19.800	131.600	5123.87	1833.87	-1239.41	1351.67	3.59	
5579.00	15.800	129.900	5209.54	1861.37	-1257.40	1372.48	4.48	
5670.00	12.900	128.100	5297.69	1883.88	-1271.62	1389.98	3.22	
5761.00	10.900	126.700	5386.73	1902.58	-1283.03	1404.87	2.22	
5852.00	11.000	130.200	5476.08	1919.82	-1293.78	1418.40	0.74	
5943.00	10.100	128.100	5565.54	1936.45	-1304.30	1431.31	1.08	
6033.00	9.100	126.700	5654.28	1951.41	-1313.43	1443.23	1.14	
6124.00	7.300	130.600	5744.34	1964.35	-1321.49	1453.39	2.07	
6215.00	6.000	130.600	5834.73	1974.88	-1328.35	1461.39	1.43	
6306.00	4.400	133.000	5925.35	1983.13	-1333.82	1467.55	1.77	
6396.00	3.300	135.500	6015.15	1989.17	-1338.03	1471.89	1.24	
6487.00	2.400	135.800	6106.03	1993.68	-1341.26	1475.06	0.99	
6578.00	2.100	143.600	6196.96	1997.22	-1343.97	1477.38	0.47	
6669.00	1.400	139.400	6287.92	1999.96	-1346.15	1479.09	0.78	
6805.00	0.700	129.500	6423.90	2002.44	-1347.94	1480.81	0.53	
6941.00	0.300	152.000	6559.89	2003.60	-1348.79	1481.62	0.32	
7077.00	0.200	21.900	6695.89	2003.85	-1348.88	1481.88	0.33	
7213.00	0.100	343.600	6831.89	2003.67	-1348.55	1481.93	0.10	
7349.00	0.300	352.000	6967.89	2003.29	-1348.08	1481.85	0.15	
7485.00	0.200	319.000	7103.89	2002.79	-1347.55	1481.64	0.13	
7621.00	0.400	311.900	7239.89	2002.07	-1347.05	1481.13	0.15	
7758.00	0.200	314.400	7376.89	2001.36	-1346.57	1480.61	0.15	
7895.00	0.200	321.100	7513.88	2000.88	-1346.21	1480.28	0.02	
8030.00	0.200	23.700	7648.88	2000.57	-1345.81	1480.23	0.15	
8166.00	0.500	18.700	7784.88	2000.26	-1345.03	1480.52	0.22	
8302.00	0.300	9.600	7920.88	1999.83	-1344.12	1480.77	0.15	
8439.00	0.300	334.100	8057.88	1999.31	-1343.44	1480.67	0.13	
8575.00	0.100	154.500	8193.88	1999.09	-1343.23	1480.57	0.29	
8666.00	0.300	199.800	8284.88	1999.25	-1343.53	1480.52	0.26	LAST BHI MWD SURVEY



Actual Wellpath Report

DRY CREEK 14-35 AWP

Page 4 of 5



INTEQ

REFERENCE WELLPATH IDENTIFICATION

Operator	KERR MCGEE OIL & GAS ONSHORE LP	Slot	SLOT#03 DRY CREEK 14-35 (2011'FSL & 500'FWL)
Area	COLORADO	Well	DRY CREEK 14-35
Field	WELD COUNTY (KERR MCGEE)	Wellbore	DRY CREEK 14-35 AWB
Facility	SEC.35-T1N-R67W		

WELLPATH DATA (91 stations)

MD [ft]	Inclination [°]	Azimuth [°]	TVD [ft]	Vert Sect [ft]	North [ft]	East [ft]	DLS [°/100ft]	Comments
8716.00	0.300	199.800	8334.87	1999.35	-1343.77	1480.43	0.00	PROJECTION TO BIT

HOLE & CASING SECTIONS Ref Wellbore: DRY CREEK 14-35 AWB Ref Wellpath: DRY CREEK 14-35 AWP

String/Diameter	Start MD [ft]	End MD [ft]	Interval [ft]	Start TVD [ft]	End TVD [ft]	Start N/S [ft]	Start E/W [ft]	End N/S [ft]	End E/W [ft]
12.25in Open Hole	15.00	1204.00	1189.00	15.00	1187.54	0.00	0.00	-104.63	120.00
8.625in Casing Surface	15.00	1204.00	1189.00	15.00	1187.54	0.00	0.00	-104.63	120.00
7.875in Open Hole	1204.00	8716.00	7512.00	1187.54	8334.87	-104.63	120.00	-1343.77	1480.43

TARGETS

Name	MD [ft]	TVD [ft]	North [ft]	East [ft]	Grid East [srv ft]	Grid North [srv ft]	Latitude	Longitude	Shape
DRY CREEK 14-35 GEO TARGET 50' RADIUS (660'FSL & 1980'FWL, REV-1)		6000.00	-1351.46	1487.62	3179276.98	1244291.50	40°00'07.884"N	104°51'36.180"W	circle
DRY CREEK 14-35 LEGAL BOX (200'N,200'S,195'E,205'W OF GEO TARGET)		6000.00	-1351.46	1482.62	3179271.98	1244291.46	40°00'07.884"N	104°51'36.244"W	square

WELLPATH COMPOSITION Ref Wellbore: DRY CREEK 14-35 AWB Ref Wellpath: DRY CREEK 14-35 AWP

Start MD [ft]	End MD [ft]	Positional Uncertainty Model	Log Name/Comment	Wellbore
15.00	1149.00	NaviTrak (Standard)	BHI MWD SURVEYS 12.25 HOLE <150-1149>	DRY CREEK 14-35 AWB
1149.00	8666.00	NaviTrak (Standard)	BHI MWD SURVEYS 7.875 <1222-8666>	DRY CREEK 14-35 AWB
8666.00	8716.00	Blind Drilling (std)	Projection to bit	DRY CREEK 14-35 AWB



Actual Wellpath Report

DRY CREEK 14-35 AWP

Page 5 of 5



INTEQ

REFERENCE WELLPATH IDENTIFICATION

Operator	KERR MCGEE OIL & GAS ONSHORE LP	Slot	SLOT#03 DRY CREEK 14-35 (2011'FSL & 500'FWL)
Area	COLORADO	Well	DRY CREEK 14-35
Field	WELD COUNTY (KERR MCGEE)	Wellbore	DRY CREEK 14-35 AWB
Facility	SEC.35-T1N-R67W		

WELLPATH COMMENTS

MD [ft]	Inclination [°]	Azimuth [°]	TVD [ft]	Comment
8666.00	0.300	199.800	8284.88	LAST BHI MWD SURVEY
8716.00	0.300	199.800	8334.87	PROJECTION TO BIT