

Chesapeake Energy -Rockies District

Weld

Wagner 11-65 9-1H

Wagner 11-65 9-1H

Wagner 11-65 9-1H

Plan: Design #1

Standard Planning Report

25 January, 2011

Chesapeake Operating

Planning Report

Database:	Drilling Database	Local Co-ordinate Reference:	Site Wagner 11-65 9-1H
Company:	Chesapeake Energy -Rockies District	TVD Reference:	WELL @ 0.0usft (Original Well Elev)
Project:	Weld	MD Reference:	WELL @ 0.0usft (Original Well Elev)
Site:	Wagner 11-65 9-1H	North Reference:	Grid
Well:	Wagner 11-65 9-1H	Survey Calculation Method:	Minimum Curvature
Wellbore:	Wagner 11-65 9-1H		
Design:	Design #1		

Project	Weld		
Map System:	US State Plane 1927 (Exact solution)	System Datum:	Mean Sea Level
Geo Datum:	NAD 1927 (NADCON CONUS)		
Map Zone:	Colorado North 501		

Site	Wagner 11-65 9-1H		
Site Position:		Northing:	586,671.93 ft
From:	Map	Easting:	2,230,908.88 ft
Position Uncertainty:	0.0 usft	Slot Radius:	13.200 in
		Latitude:	40° 56' 26.94067827 N
		Longitude:	104° 39' 51.38326369 W
		Grid Convergence:	0.54 °

Well	Wagner 11-65 9-1H					
Well Position	+N/-S	0.0 usft	Northing:	586,671.93 ft	Latitude:	40° 56' 26.94067827 N
	+E/-W	0.0 usft	Easting:	2,230,908.88 ft	Longitude:	104° 39' 51.38326369 W
Position Uncertainty		0.0 usft	Wellhead Elevation:		Ground Level:	0.0 usft

Wellbore	Wagner 11-65 9-1H				
Magnetics	Model Name	Sample Date	Declination (°)	Dip Angle (°)	Field Strength (nT)
	IGRF200510	1/25/2011	8.87	67.52	53,525

Design	Design #1			
Audit Notes:				
Version:	Phase:	PROTOTYPE	Tie On Depth:	0.0
Vertical Section:	Depth From (TVD) (usft)	+N/-S (usft)	+E/-W (usft)	Direction (°)
	8,423.0	0.0	0.0	180.24

Plan Sections										
Measured Depth (usft)	Inclination (°)	Azimuth (°)	Vertical Depth (usft)	+N/-S (usft)	+E/-W (usft)	Dogleg Rate (°/100usft)	Build Rate (°/100usft)	Turn Rate (°/100usft)	TFO (°)	Target
0.0	0.00	0.00	0.0	0.0	0.0	0.00	0.00	0.00	0.00	
7,851.8	0.00	0.00	7,851.8	0.0	0.0	0.00	0.00	0.00	0.00	
8,749.8	89.80	180.24	8,424.8	-571.0	-2.4	10.00	10.00	0.00	180.24	
12,243.9	89.80	180.24	8,437.0	-4,064.9	-16.9	0.00	0.00	0.00	0.00	Wagner 11-65 9-1H

Chesapeake Operating

Planning Report

Database:	Drilling Database	Local Co-ordinate Reference:	Site Wagner 11-65 9-1H
Company:	Chesapeake Energy -Rockies District	TVD Reference:	WELL @ 0.0usft (Original Well Elev)
Project:	Weld	MD Reference:	WELL @ 0.0usft (Original Well Elev)
Site:	Wagner 11-65 9-1H	North Reference:	Grid
Well:	Wagner 11-65 9-1H	Survey Calculation Method:	Minimum Curvature
Wellbore:	Wagner 11-65 9-1H		
Design:	Design #1		

Planned Survey										
Measured Depth (usft)	Inclination (°)	Azimuth (°)	Vertical Depth (usft)	+N/-S (usft)	+E/-W (usft)	Vertical Section (usft)	Dogleg Rate (°/100usft)	Build Rate (°/100usft)	Turn Rate (°/100usft)	
0.0	0.00	0.00	0.0	0.0	0.0	0.0	0.00	0.00	0.00	
100.0	0.00	0.00	100.0	0.0	0.0	0.0	0.00	0.00	0.00	
200.0	0.00	0.00	200.0	0.0	0.0	0.0	0.00	0.00	0.00	
300.0	0.00	0.00	300.0	0.0	0.0	0.0	0.00	0.00	0.00	
400.0	0.00	0.00	400.0	0.0	0.0	0.0	0.00	0.00	0.00	
500.0	0.00	0.00	500.0	0.0	0.0	0.0	0.00	0.00	0.00	
600.0	0.00	0.00	600.0	0.0	0.0	0.0	0.00	0.00	0.00	
700.0	0.00	0.00	700.0	0.0	0.0	0.0	0.00	0.00	0.00	
800.0	0.00	0.00	800.0	0.0	0.0	0.0	0.00	0.00	0.00	
900.0	0.00	0.00	900.0	0.0	0.0	0.0	0.00	0.00	0.00	
1,000.0	0.00	0.00	1,000.0	0.0	0.0	0.0	0.00	0.00	0.00	
1,100.0	0.00	0.00	1,100.0	0.0	0.0	0.0	0.00	0.00	0.00	
1,200.0	0.00	0.00	1,200.0	0.0	0.0	0.0	0.00	0.00	0.00	
1,300.0	0.00	0.00	1,300.0	0.0	0.0	0.0	0.00	0.00	0.00	
1,400.0	0.00	0.00	1,400.0	0.0	0.0	0.0	0.00	0.00	0.00	
1,500.0	0.00	0.00	1,500.0	0.0	0.0	0.0	0.00	0.00	0.00	
1,600.0	0.00	0.00	1,600.0	0.0	0.0	0.0	0.00	0.00	0.00	
1,700.0	0.00	0.00	1,700.0	0.0	0.0	0.0	0.00	0.00	0.00	
1,800.0	0.00	0.00	1,800.0	0.0	0.0	0.0	0.00	0.00	0.00	
1,900.0	0.00	0.00	1,900.0	0.0	0.0	0.0	0.00	0.00	0.00	
2,000.0	0.00	0.00	2,000.0	0.0	0.0	0.0	0.00	0.00	0.00	
2,100.0	0.00	0.00	2,100.0	0.0	0.0	0.0	0.00	0.00	0.00	
2,200.0	0.00	0.00	2,200.0	0.0	0.0	0.0	0.00	0.00	0.00	
2,300.0	0.00	0.00	2,300.0	0.0	0.0	0.0	0.00	0.00	0.00	
2,400.0	0.00	0.00	2,400.0	0.0	0.0	0.0	0.00	0.00	0.00	
2,500.0	0.00	0.00	2,500.0	0.0	0.0	0.0	0.00	0.00	0.00	
2,600.0	0.00	0.00	2,600.0	0.0	0.0	0.0	0.00	0.00	0.00	
2,700.0	0.00	0.00	2,700.0	0.0	0.0	0.0	0.00	0.00	0.00	
2,800.0	0.00	0.00	2,800.0	0.0	0.0	0.0	0.00	0.00	0.00	
2,900.0	0.00	0.00	2,900.0	0.0	0.0	0.0	0.00	0.00	0.00	
3,000.0	0.00	0.00	3,000.0	0.0	0.0	0.0	0.00	0.00	0.00	
3,100.0	0.00	0.00	3,100.0	0.0	0.0	0.0	0.00	0.00	0.00	
3,200.0	0.00	0.00	3,200.0	0.0	0.0	0.0	0.00	0.00	0.00	
3,300.0	0.00	0.00	3,300.0	0.0	0.0	0.0	0.00	0.00	0.00	
3,400.0	0.00	0.00	3,400.0	0.0	0.0	0.0	0.00	0.00	0.00	
3,500.0	0.00	0.00	3,500.0	0.0	0.0	0.0	0.00	0.00	0.00	
3,600.0	0.00	0.00	3,600.0	0.0	0.0	0.0	0.00	0.00	0.00	
3,700.0	0.00	0.00	3,700.0	0.0	0.0	0.0	0.00	0.00	0.00	
3,800.0	0.00	0.00	3,800.0	0.0	0.0	0.0	0.00	0.00	0.00	
3,900.0	0.00	0.00	3,900.0	0.0	0.0	0.0	0.00	0.00	0.00	
4,000.0	0.00	0.00	4,000.0	0.0	0.0	0.0	0.00	0.00	0.00	
4,100.0	0.00	0.00	4,100.0	0.0	0.0	0.0	0.00	0.00	0.00	
4,200.0	0.00	0.00	4,200.0	0.0	0.0	0.0	0.00	0.00	0.00	
4,300.0	0.00	0.00	4,300.0	0.0	0.0	0.0	0.00	0.00	0.00	
4,400.0	0.00	0.00	4,400.0	0.0	0.0	0.0	0.00	0.00	0.00	
4,500.0	0.00	0.00	4,500.0	0.0	0.0	0.0	0.00	0.00	0.00	
4,600.0	0.00	0.00	4,600.0	0.0	0.0	0.0	0.00	0.00	0.00	
4,700.0	0.00	0.00	4,700.0	0.0	0.0	0.0	0.00	0.00	0.00	
4,800.0	0.00	0.00	4,800.0	0.0	0.0	0.0	0.00	0.00	0.00	
4,900.0	0.00	0.00	4,900.0	0.0	0.0	0.0	0.00	0.00	0.00	
5,000.0	0.00	0.00	5,000.0	0.0	0.0	0.0	0.00	0.00	0.00	
5,100.0	0.00	0.00	5,100.0	0.0	0.0	0.0	0.00	0.00	0.00	
5,200.0	0.00	0.00	5,200.0	0.0	0.0	0.0	0.00	0.00	0.00	
5,300.0	0.00	0.00	5,300.0	0.0	0.0	0.0	0.00	0.00	0.00	

Chesapeake Operating

Planning Report

Database:	Drilling Database	Local Co-ordinate Reference:	Site Wagner 11-65 9-1H
Company:	Chesapeake Energy -Rockies District	TVD Reference:	WELL @ 0.0usft (Original Well Elev)
Project:	Weld	MD Reference:	WELL @ 0.0usft (Original Well Elev)
Site:	Wagner 11-65 9-1H	North Reference:	Grid
Well:	Wagner 11-65 9-1H	Survey Calculation Method:	Minimum Curvature
Wellbore:	Wagner 11-65 9-1H		
Design:	Design #1		

Planned Survey									
Measured Depth (usft)	Inclination (°)	Azimuth (°)	Vertical Depth (usft)	+N/-S (usft)	+E/-W (usft)	Vertical Section (usft)	Dogleg Rate (°/100usft)	Build Rate (°/100usft)	Turn Rate (°/100usft)
5,400.0	0.00	0.00	5,400.0	0.0	0.0	0.0	0.00	0.00	0.00
5,500.0	0.00	0.00	5,500.0	0.0	0.0	0.0	0.00	0.00	0.00
5,600.0	0.00	0.00	5,600.0	0.0	0.0	0.0	0.00	0.00	0.00
5,700.0	0.00	0.00	5,700.0	0.0	0.0	0.0	0.00	0.00	0.00
5,800.0	0.00	0.00	5,800.0	0.0	0.0	0.0	0.00	0.00	0.00
5,900.0	0.00	0.00	5,900.0	0.0	0.0	0.0	0.00	0.00	0.00
6,000.0	0.00	0.00	6,000.0	0.0	0.0	0.0	0.00	0.00	0.00
6,100.0	0.00	0.00	6,100.0	0.0	0.0	0.0	0.00	0.00	0.00
6,200.0	0.00	0.00	6,200.0	0.0	0.0	0.0	0.00	0.00	0.00
6,300.0	0.00	0.00	6,300.0	0.0	0.0	0.0	0.00	0.00	0.00
6,400.0	0.00	0.00	6,400.0	0.0	0.0	0.0	0.00	0.00	0.00
6,500.0	0.00	0.00	6,500.0	0.0	0.0	0.0	0.00	0.00	0.00
6,600.0	0.00	0.00	6,600.0	0.0	0.0	0.0	0.00	0.00	0.00
6,700.0	0.00	0.00	6,700.0	0.0	0.0	0.0	0.00	0.00	0.00
6,800.0	0.00	0.00	6,800.0	0.0	0.0	0.0	0.00	0.00	0.00
6,900.0	0.00	0.00	6,900.0	0.0	0.0	0.0	0.00	0.00	0.00
7,000.0	0.00	0.00	7,000.0	0.0	0.0	0.0	0.00	0.00	0.00
7,100.0	0.00	0.00	7,100.0	0.0	0.0	0.0	0.00	0.00	0.00
7,200.0	0.00	0.00	7,200.0	0.0	0.0	0.0	0.00	0.00	0.00
7,300.0	0.00	0.00	7,300.0	0.0	0.0	0.0	0.00	0.00	0.00
7,400.0	0.00	0.00	7,400.0	0.0	0.0	0.0	0.00	0.00	0.00
7,500.0	0.00	0.00	7,500.0	0.0	0.0	0.0	0.00	0.00	0.00
7,600.0	0.00	0.00	7,600.0	0.0	0.0	0.0	0.00	0.00	0.00
7,700.0	0.00	0.00	7,700.0	0.0	0.0	0.0	0.00	0.00	0.00
7,800.0	0.00	0.00	7,800.0	0.0	0.0	0.0	0.00	0.00	0.00
7,851.8	0.00	0.00	7,851.8	0.0	0.0	0.0	0.00	0.00	0.00
7,900.0	4.81	180.24	7,899.9	-2.0	0.0	2.0	10.00	10.00	0.00
8,000.0	14.81	180.24	7,998.3	-19.0	-0.1	19.0	10.00	10.00	0.00
8,100.0	24.81	180.24	8,092.3	-52.9	-0.2	52.9	10.00	10.00	0.00
8,200.0	34.81	180.24	8,179.0	-102.5	-0.4	102.6	10.00	10.00	0.00
8,300.0	44.81	180.24	8,255.7	-166.5	-0.7	166.5	10.00	10.00	0.00
8,400.0	54.81	180.24	8,320.1	-242.8	-1.0	242.8	10.00	10.00	0.00
8,500.0	64.81	180.24	8,370.3	-329.1	-1.4	329.1	10.00	10.00	0.00
8,600.0	74.81	180.24	8,404.8	-422.9	-1.8	422.9	10.00	10.00	0.00
8,700.0	84.81	180.24	8,422.5	-521.2	-2.2	521.2	10.00	10.00	0.00
8,749.8	89.80	180.24	8,424.8	-571.0	-2.4	571.0	10.00	10.00	0.00
8,800.0	89.80	180.24	8,425.0	-621.1	-2.6	621.1	0.00	0.00	0.00
8,900.0	89.80	180.24	8,425.3	-721.1	-3.0	721.1	0.00	0.00	0.00
9,000.0	89.80	180.24	8,425.7	-821.1	-3.4	821.1	0.00	0.00	0.00
9,100.0	89.80	180.24	8,426.0	-921.1	-3.8	921.1	0.00	0.00	0.00
9,200.0	89.80	180.24	8,426.4	-1,021.1	-4.2	1,021.1	0.00	0.00	0.00
9,300.0	89.80	180.24	8,426.7	-1,121.1	-4.7	1,121.1	0.00	0.00	0.00
9,400.0	89.80	180.24	8,427.1	-1,221.1	-5.1	1,221.1	0.00	0.00	0.00
9,500.0	89.80	180.24	8,427.4	-1,321.1	-5.5	1,321.1	0.00	0.00	0.00
9,600.0	89.80	180.24	8,427.8	-1,421.1	-5.9	1,421.1	0.00	0.00	0.00
9,700.0	89.80	180.24	8,428.1	-1,521.1	-6.3	1,521.1	0.00	0.00	0.00
9,800.0	89.80	180.24	8,428.5	-1,621.1	-6.7	1,621.1	0.00	0.00	0.00
9,900.0	89.80	180.24	8,428.8	-1,721.1	-7.1	1,721.1	0.00	0.00	0.00
10,000.0	89.80	180.24	8,429.2	-1,821.1	-7.6	1,821.1	0.00	0.00	0.00
10,100.0	89.80	180.24	8,429.5	-1,921.1	-8.0	1,921.1	0.00	0.00	0.00
10,200.0	89.80	180.24	8,429.9	-2,021.1	-8.4	2,021.1	0.00	0.00	0.00
10,300.0	89.80	180.24	8,430.2	-2,121.1	-8.8	2,121.1	0.00	0.00	0.00
10,400.0	89.80	180.24	8,430.6	-2,221.1	-9.2	2,221.1	0.00	0.00	0.00
10,500.0	89.80	180.24	8,430.9	-2,321.1	-9.6	2,321.1	0.00	0.00	0.00

Chesapeake Operating

Planning Report

Database:	Drilling Database	Local Co-ordinate Reference:	Site Wagner 11-65 9-1H
Company:	Chesapeake Energy -Rockies District	TVD Reference:	WELL @ 0.0usft (Original Well Elev)
Project:	Weld	MD Reference:	WELL @ 0.0usft (Original Well Elev)
Site:	Wagner 11-65 9-1H	North Reference:	Grid
Well:	Wagner 11-65 9-1H	Survey Calculation Method:	Minimum Curvature
Wellbore:	Wagner 11-65 9-1H		
Design:	Design #1		

Planned Survey										
Measured Depth (usft)	Inclination (°)	Azimuth (°)	Vertical Depth (usft)	+N/-S (usft)	+E/-W (usft)	Vertical Section (usft)	Dogleg Rate (°/100usft)	Build Rate (°/100usft)	Turn Rate (°/100usft)	
10,600.0	89.80	180.24	8,431.3	-2,421.1	-10.1	2,421.1	0.00	0.00	0.00	
10,700.0	89.80	180.24	8,431.6	-2,521.1	-10.5	2,521.1	0.00	0.00	0.00	
10,800.0	89.80	180.24	8,432.0	-2,621.1	-10.9	2,621.1	0.00	0.00	0.00	
10,900.0	89.80	180.24	8,432.3	-2,721.1	-11.3	2,721.1	0.00	0.00	0.00	
11,000.0	89.80	180.24	8,432.7	-2,821.0	-11.7	2,821.1	0.00	0.00	0.00	
11,100.0	89.80	180.24	8,433.0	-2,921.0	-12.1	2,921.1	0.00	0.00	0.00	
11,200.0	89.80	180.24	8,433.4	-3,021.0	-12.5	3,021.1	0.00	0.00	0.00	
11,300.0	89.80	180.24	8,433.7	-3,121.0	-13.0	3,121.1	0.00	0.00	0.00	
11,400.0	89.80	180.24	8,434.1	-3,221.0	-13.4	3,221.1	0.00	0.00	0.00	
11,500.0	89.80	180.24	8,434.4	-3,321.0	-13.8	3,321.1	0.00	0.00	0.00	
11,600.0	89.80	180.24	8,434.8	-3,421.0	-14.2	3,421.1	0.00	0.00	0.00	
11,700.0	89.80	180.24	8,435.1	-3,521.0	-14.6	3,521.1	0.00	0.00	0.00	
11,800.0	89.80	180.24	8,435.5	-3,621.0	-15.0	3,621.1	0.00	0.00	0.00	
11,900.0	89.80	180.24	8,435.8	-3,721.0	-15.5	3,721.1	0.00	0.00	0.00	
12,000.0	89.80	180.24	8,436.1	-3,821.0	-15.9	3,821.1	0.00	0.00	0.00	
12,100.0	89.80	180.24	8,436.5	-3,921.0	-16.3	3,921.1	0.00	0.00	0.00	
12,200.0	89.80	180.24	8,436.8	-4,021.0	-16.7	4,021.1	0.00	0.00	0.00	
12,243.9	89.80	180.24	8,437.0	-4,064.9	-16.9	4,065.0	0.00	0.00	0.00	

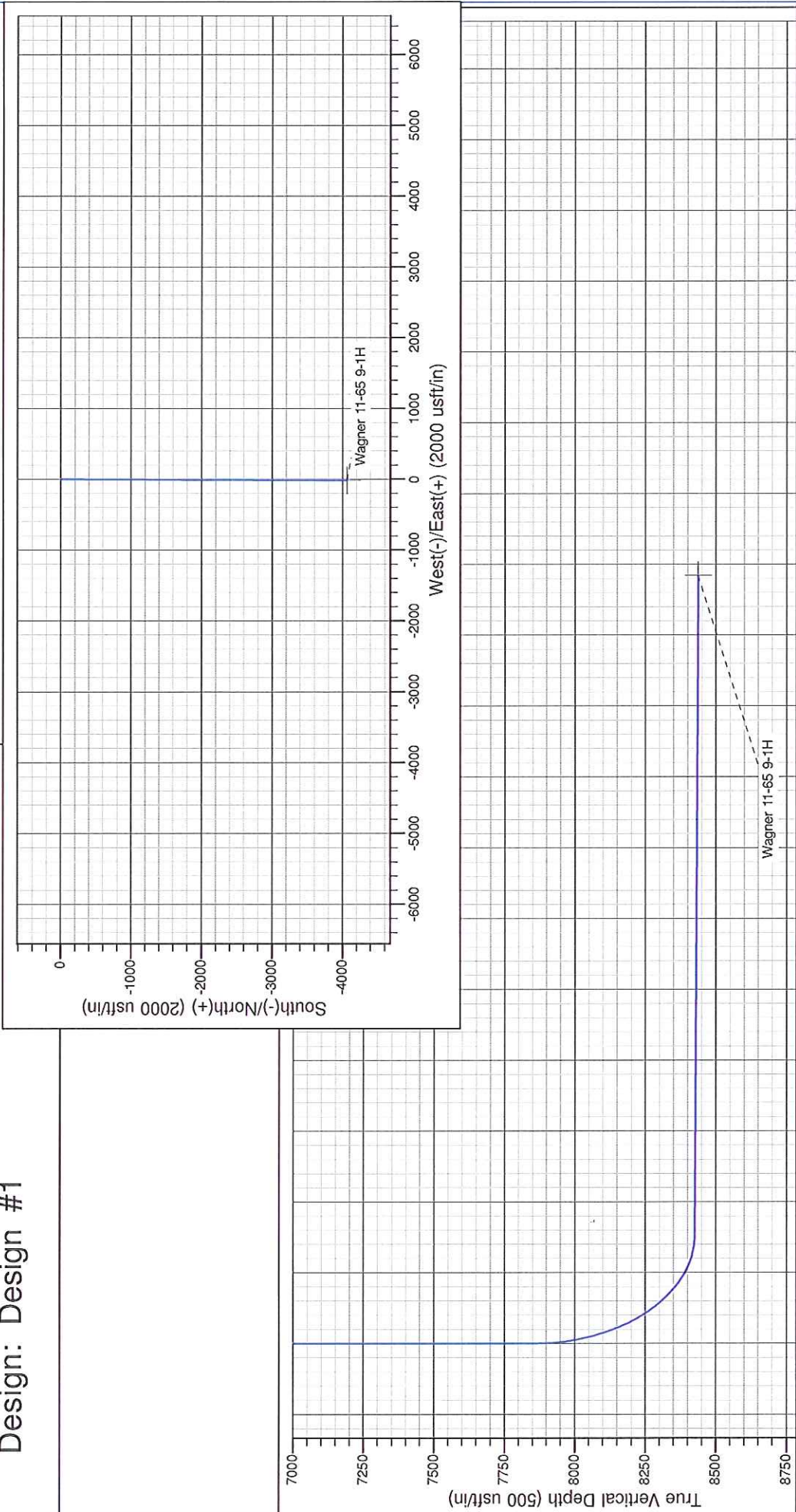
Design Targets									
Target Name	Dip Angle (°)	Dip Dir. (°)	TVD (usft)	+N/-S (usft)	+E/-W (usft)	Northing (ft)	Easting (ft)	Latitude	Longitude
- hit/miss target									
- Shape									
Wagner 11-65 9-1H	0.00	0.00	8,437.0	-4,064.9	-16.9	582,607.00	2,230,892.00	0° 55' 46.78009750 N	4° 39' 52.10223027 W
- plan hits target center									
- Point									

Project: Weld
Site: Wagner 11-65 9-1H
Well: Wagner 11-65 9-1H
Wellbore: Wagner 11-65 9-1H
Design: Design #1

PROJECT DETAILS: Weld

Geodetic System: US State Plane 1927 (Exact solution)
Datum: NAD 1927 (NADCON CONUS)
Ellipsoid: Clarke 1866
Zone: Colorado North 501

System Datum: Mean Sea Level



SECTION DETAILS

Sec	MD	Inc	Azi	TVD	+N/-S	+E/-W	Dleg	TFace	VSect	Target
1	0.0	0.00	0.00	0.0	0.0	0.0	0.00	0.00	0.0	
2	7851.8	0.00	0.00	7851.8	0.0	0.0	0.00	0.00	0.0	
3	8749.8	89.80	180.24	8424.8	-571.0	-2.4	10.00	180.24	571.0	Wagner 11-65 9-1H
4	12243.9	89.80	180.24	8437.0	-4064.9	-16.9	0.00	0.00	4065.0	Wagner 11-65 9-1H